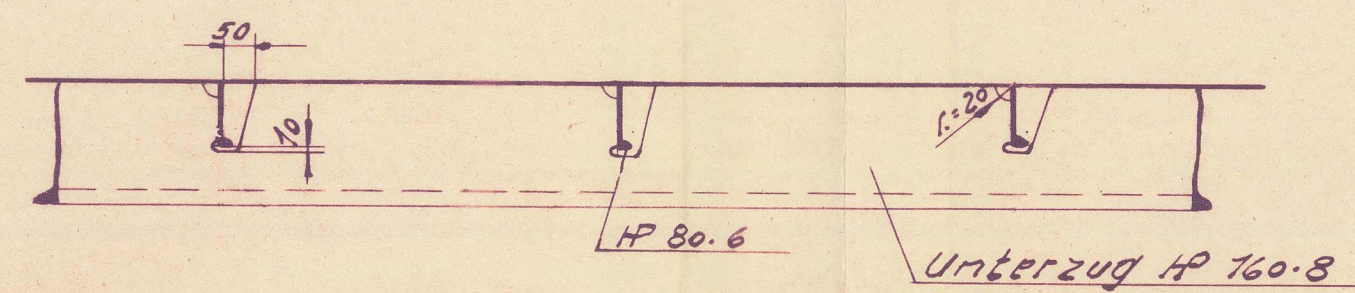
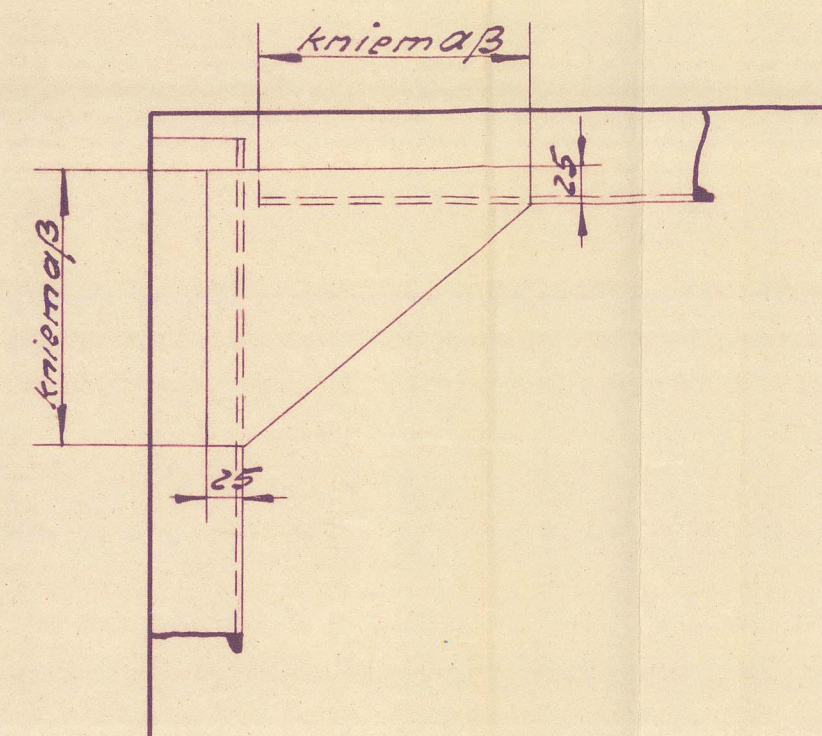


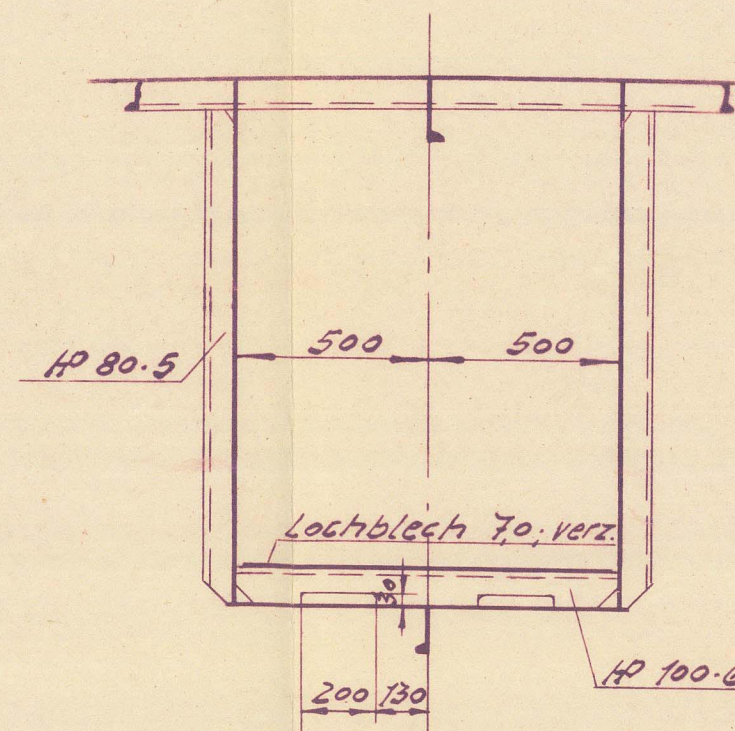
Verbindung Unterzug mit Decksbalken!



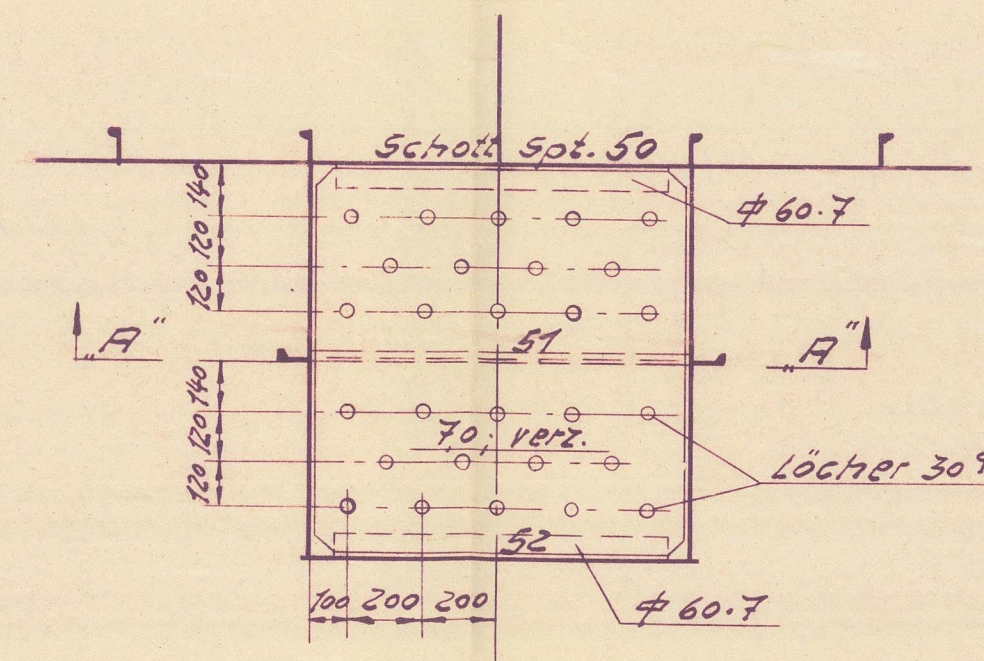
Knieüberlappung



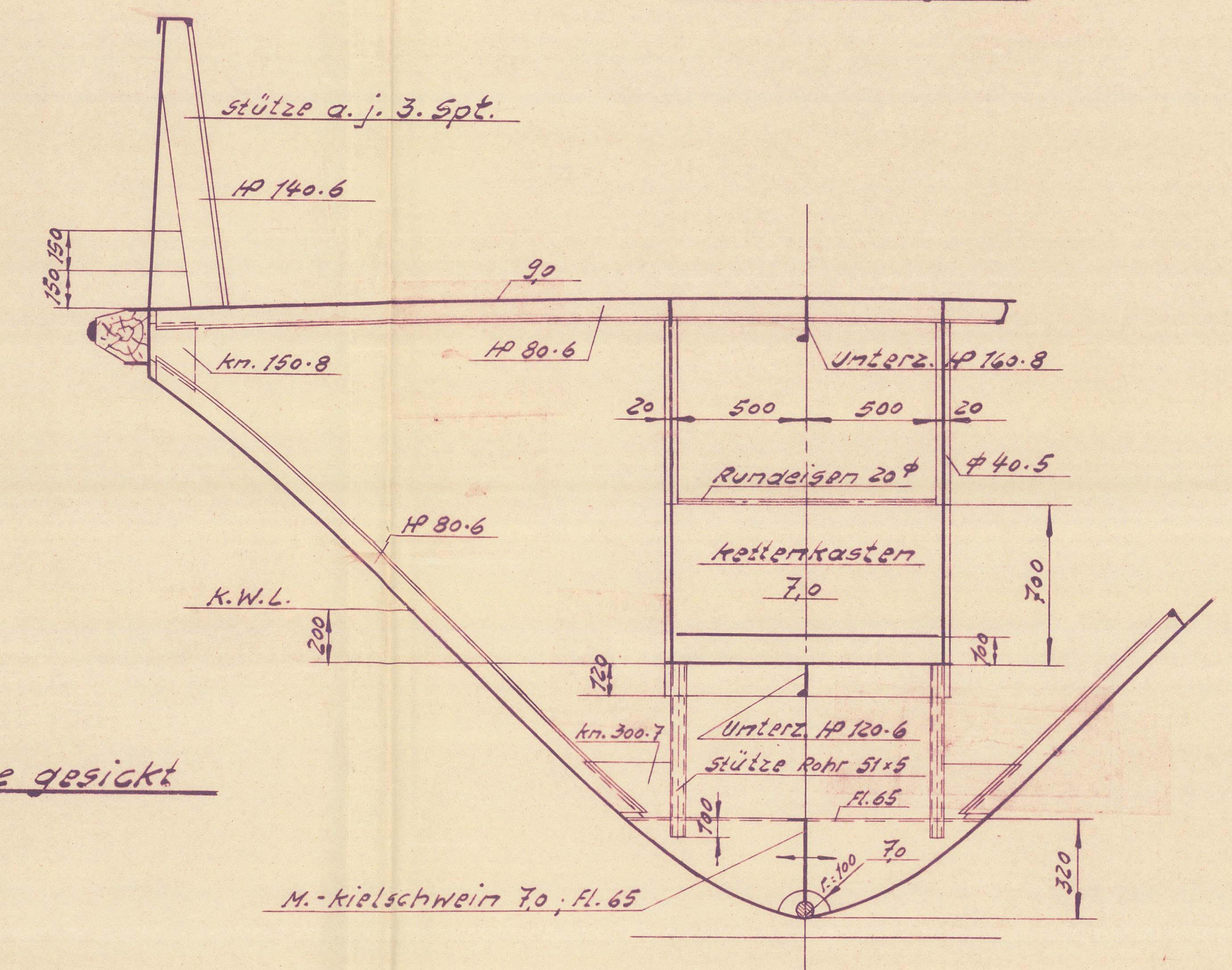
Schnitt "A-A"



Lochblech

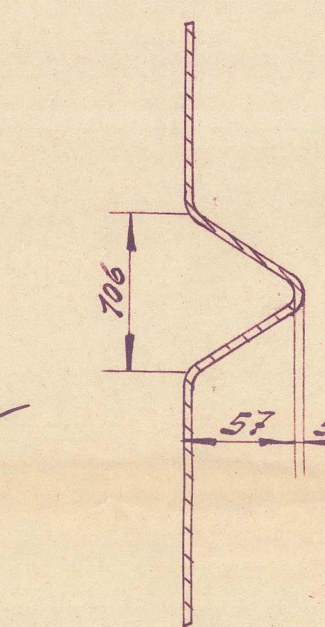


Spt. 52  
vom hinten ges.!

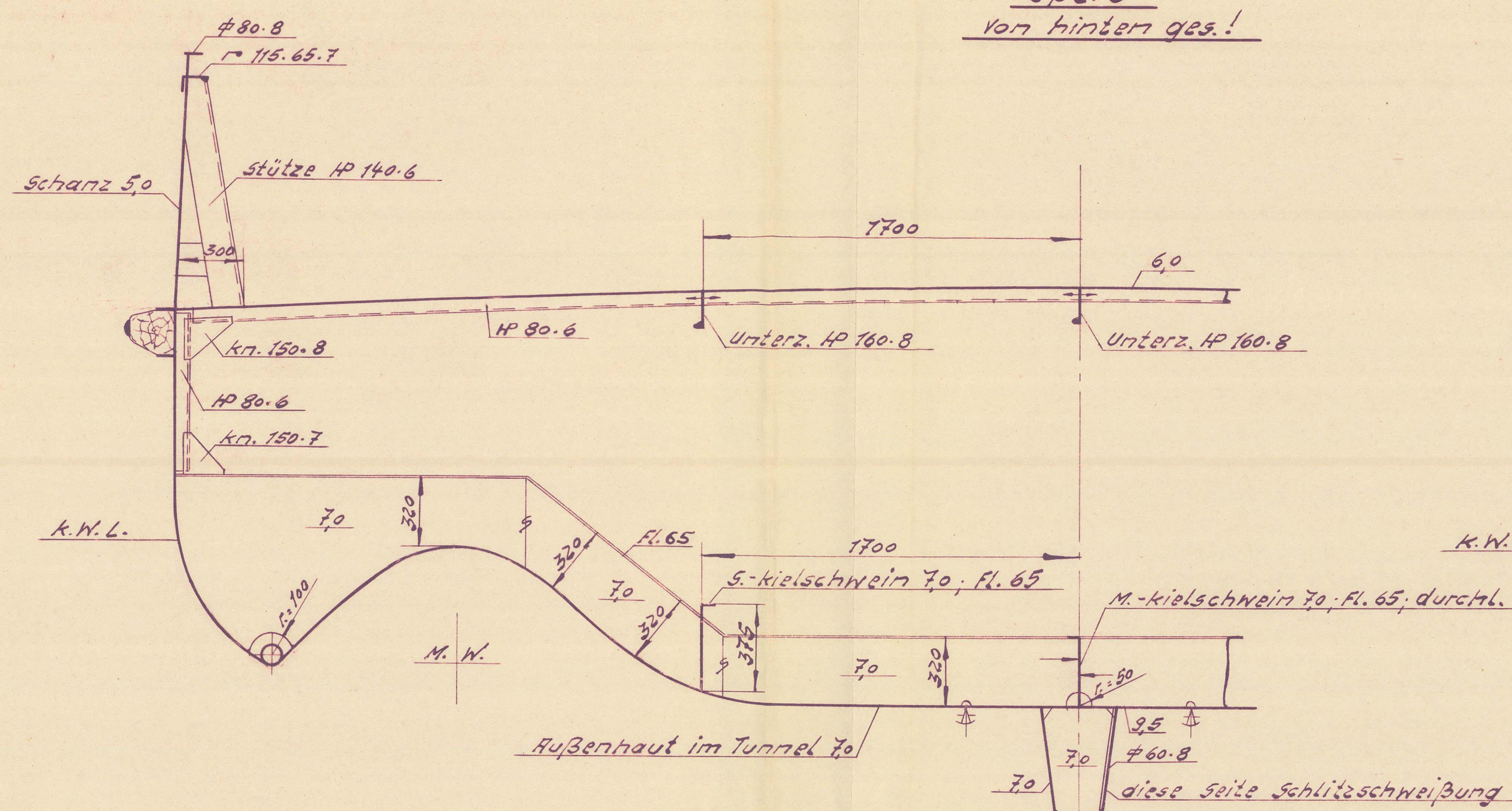


5pt. 11  
von hinten ges.!

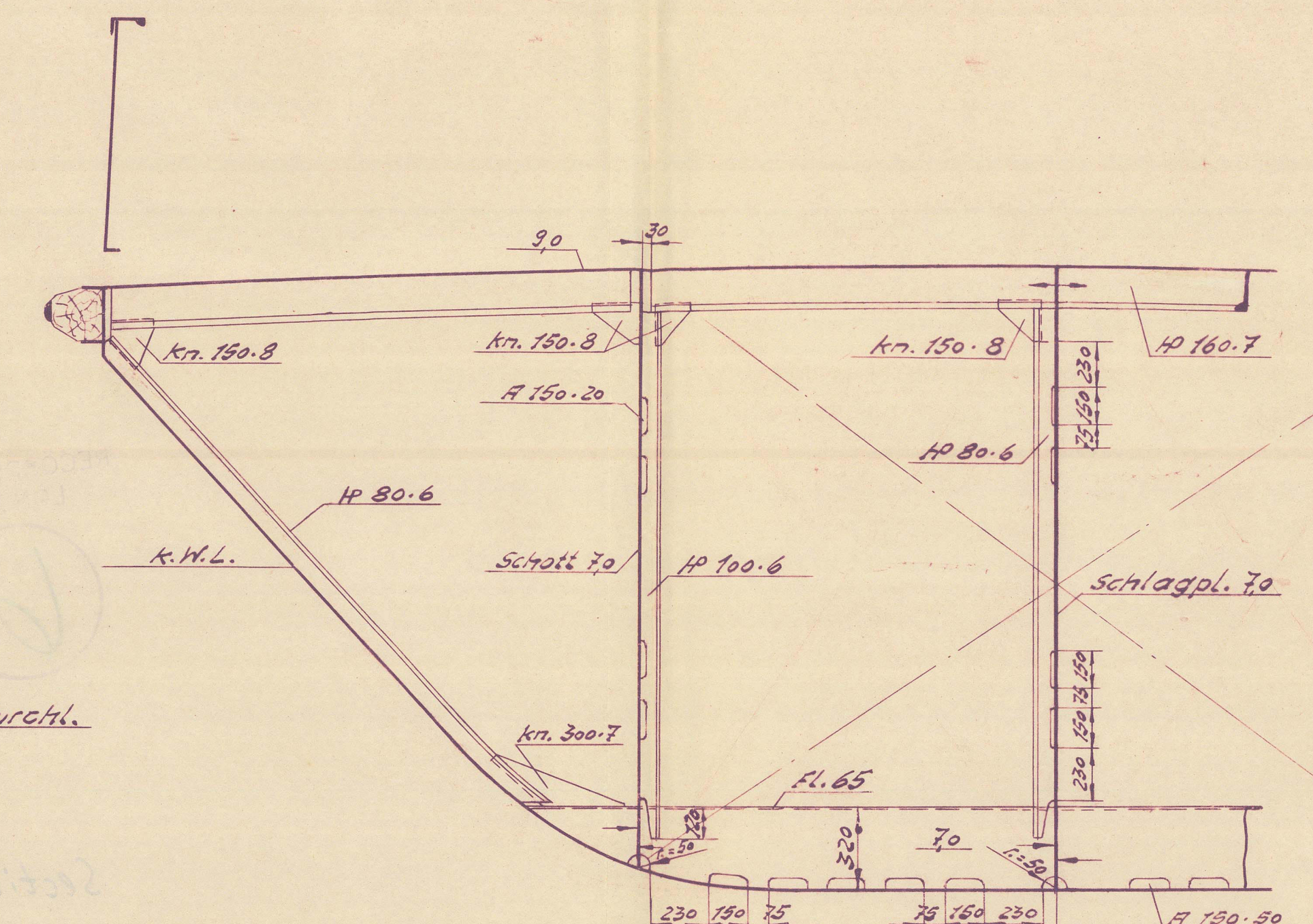
### Aufbau-Innenwände gesiekt



Spt. 6  
Vom Hintern ges.!



Spt. 48  
vom Hinten ges.!



Bodenwürgen u. 5.-Kielschwein schlitzern!

Genehmigt von Lloyd's Register am 12.10.62

Genehmigt von Maierform am 1.10.62

011544-011554-0029

Copy of approved Plan No 1103  
J. W. Kremer Sohn, Schiffswerft, Elmshorn

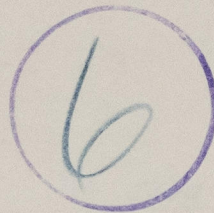
## Querschnitte

Section (F+H).

<u>Maßstab:</u> 1:20, 1:10 u. 1:5	<u>Entw.</u> 21. 6. 62 hq.	<u>Zeichng.-Nr.</u> 1100/1103-7
--------------------------------------	-------------------------------	------------------------------------



RECORDS DEPT.  
LONDON.



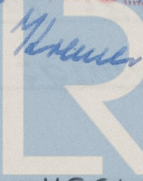
Section (F+A)

Retain with Hamburg

Chip First Entry

Report No. 4413425

SS/MS INTA 2021



John, y. No. 1103

Lloyd's Register  
Foundation

011544 - 011554 - 0029