

LLOYD'S REGISTER OF SHIPPING

FOR CLASSIFICATION PURPOSES ONLY

SURVEYS FOR FREEBOARD

(CONDITIONS OF ASSIGNMENT)

 Index No.
 (For London Office only.)

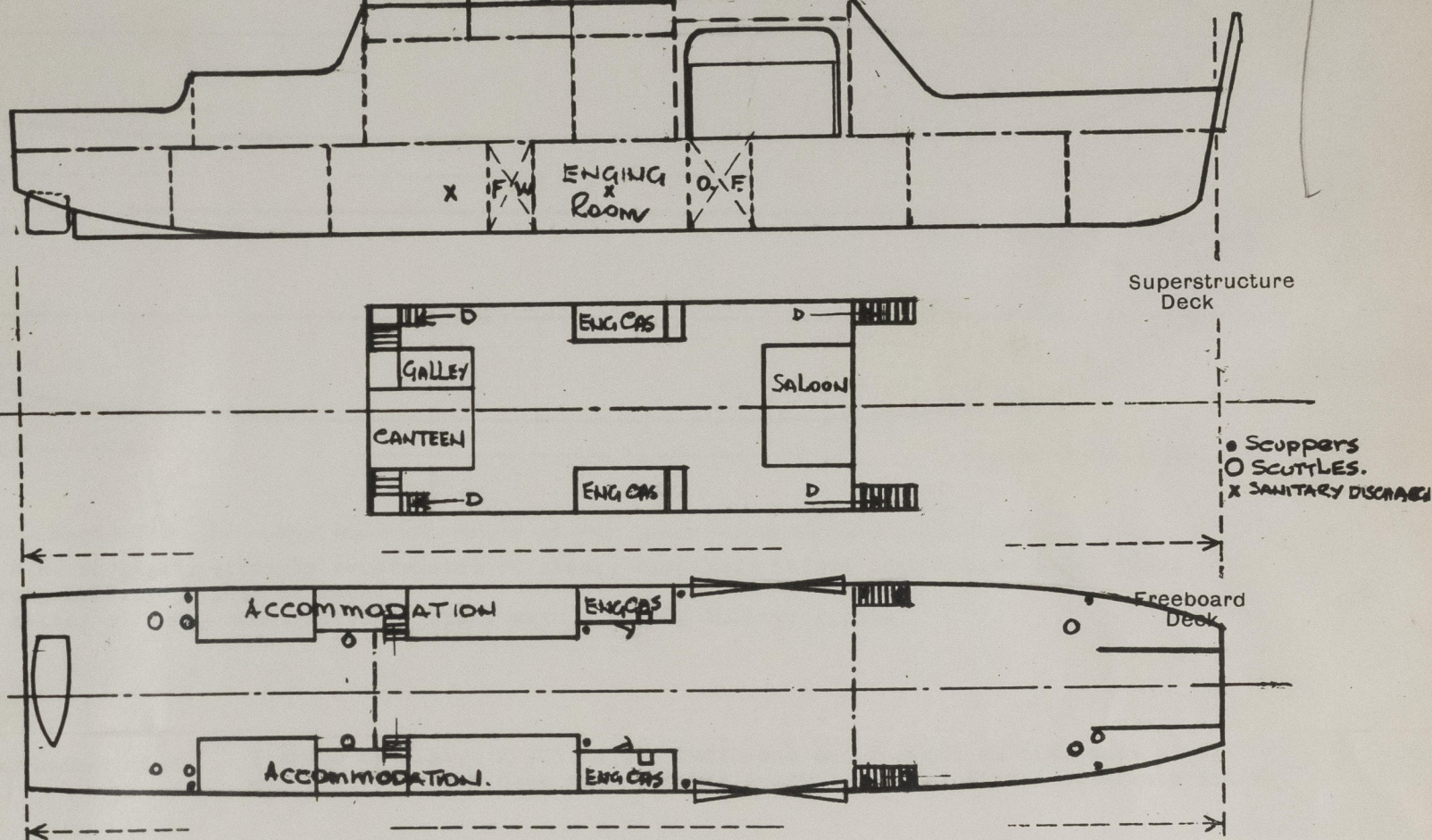
F 883

Ship's Name **"IWTA FARIDPUR"** Port of Survey **Bremen**

Official Number. Surveyor's Signature *[Signature]*

Nationality and Port of Registry **Pakistani, Narayanganj** Date of Survey **27.7.77 building**

Disposition and dimensions of superstructures, trunks, deckhouses, machinery casings and wood sheathing to be inserted in the diagrams and tabular statement:—



Particulars of Superstructures, Trunks, Casings, Deckhouses.

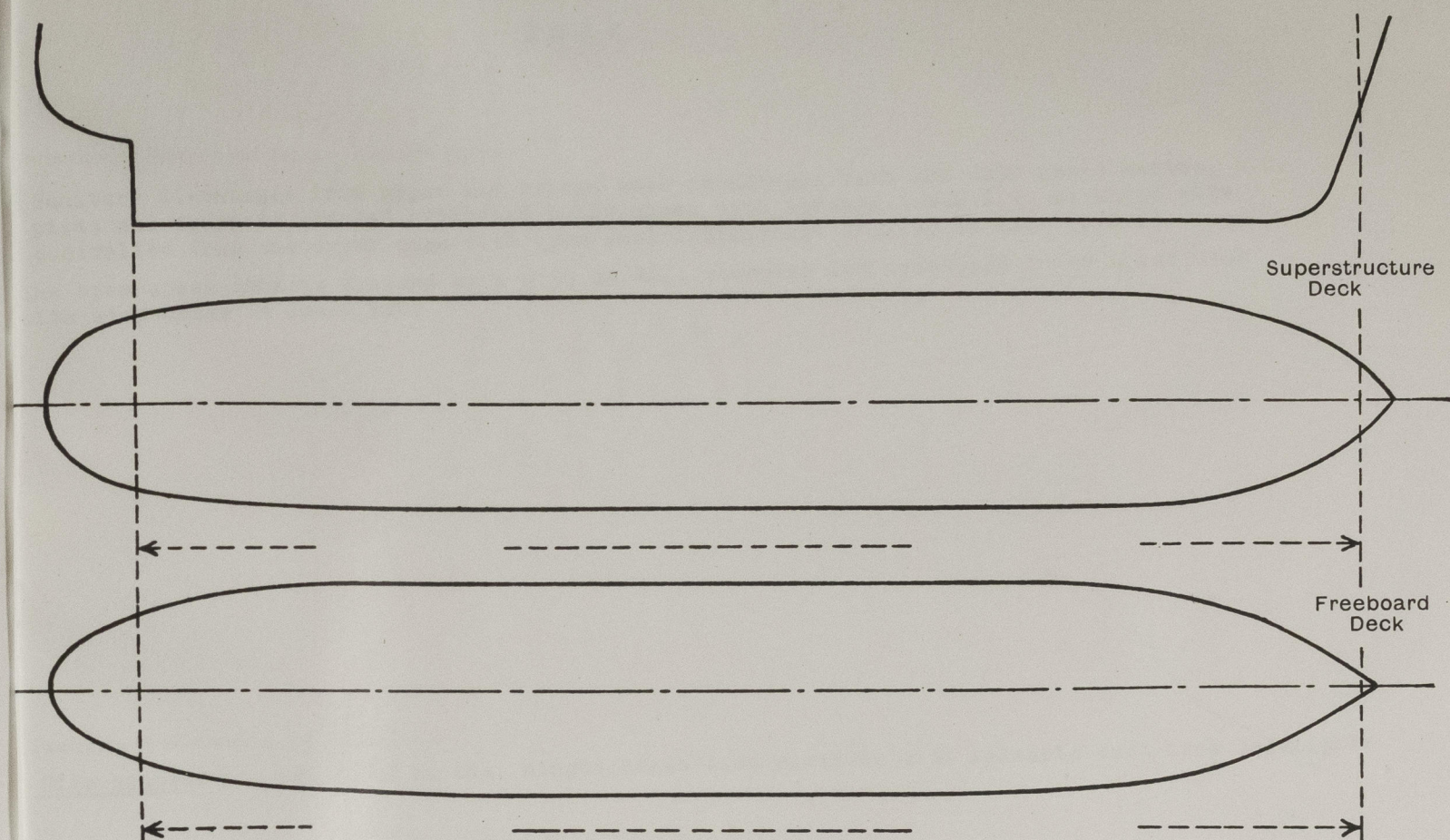
	Coaming	Plating mm	Stiffeners mm	Spacing mm	End Attachments of Stiffeners	Size of Openings mm	Height of Sills mm	Height, Beam to Beam mm
Poop Bulkhead				-				
Raised Quarter Deck Bulkhead ...				-				
Bridge, After Bulkhead				-				
Bridge, Forward Bulkhead				-				
Forecastle Bulkhead				-				
Trunk, Aft				-				
Trunk, Forward				-				
Exposed Machinery Casings on Freeboard or Raised Quarter Decks ...	-	5	60 x 40 x 5	610	Sniped Btm.	1610 x 600	457	3395
Exposed Machinery Casings on Superstructure Decks	-	5	60 x 40 x 5	610	Continuous Bkts top	None	-	2130
Machinery Casings within Superstructures not fitted with Class I Closing Appliances								
Deckhouses and Entrances	-	4	60 x 40 x 5	610	Bkts top and bot.	1820 x 640	230/ 235	2150

Particulars of Closing Appliances (state if capable of being manipulated from both sides).

Poop Bulkhead	-
Raised Quarter Deck Bulkhead ...	-
Bridge, After Bulkhead	-
Bridge, Forward Bulkhead	-
Forecastle Bulkhead	-
Exposed Machinery Casings on Freeboard or Raised Quarter Decks ...	Hinged steel W.T. door operated both sides.
Exposed Machinery Casings on Superstructure Decks	-
Machinery Casings within Superstructures not fitted with Class I Closing Appliances	-
Deckhouses and Entrances	Hinged hardwood doors (50 mm thick) operated both sides

PARTICULARS OF PROTECTION TO OPENINGS, ETC.

The following diagrams should be used to indicate the positions of cargo and coaling hatchways, gangway, cargo and coaling ports, side scuttles, scuppers, ventilators, companionways, etc., which would affect the seaworthiness of the ship :—



Particulars of fiddley, funnel and ventilator coamings, engine room skylight and other openings in machinery casing tops and their means of closing :—
 funnels and E.R. skylights strongly constructed of steel. Skylights fitted with hinged steel flaps with two strong bullseye lights in each.
 skylight to galley strongly constructed of steel with 4 strong bulleye lights.

Particulars of Flush Bunker Scuttles :—
 1 @ 600 mm dia., 8 @ 428 mm dia cast iron and 2 @ 428 mm dia. cast steel scuttles on upper deck with bayonet joints - covers fitted with keep chains.

Particulars of Companionways :—
 (including those incorporated in deckhouses and masthouses)
 Strong steel companionway on upper deck to engine room (p&s). Hinged steel watertight door, operated both sides 1610 x 600 sill 457mm.

Particulars of Ventilators in exposed positions on freeboard and superstructure decks :—
 Vent to Engine Room (p&s) incorporated in Engine Casing, opening of 500 mm x 400 mm situated 2745 mm above deck covered by wire gauze and trunk inside casing of galvanised iron.

Opening in casing front 150 x 150 mm with fan led into galv. iron trunk to battery room also opening of 250 mm x 120 mm in casing front - natural ventilation - to battery room.
 Height of openings above deck 3125 mm and 2275 mm.

Particulars of Air Pipes in exposed positions on freeboard, raised quarter, or superstructure decks :—

per Deck:-

- 50 mm dia. to F.P. Space
- 50 mm dia. to No. 1 Void Space
- 50 mm dia. to No. 2 Void Space
- 50 mm dia. to No. 3 Void Space
- 50 mm dia. to No. 4 Void Space
- 50 mm dia. to I.P. Space (ps)
- 75 mm dia. to O.F. Bunkers and settling tanks (ps)
- 50 mm dia. to lub. tank (p&s) led inside casing to above upper deck.

Note:- All air pipes fitted with patent heads with ball valve closing appliances those to oil tanks fitted with wire gauze.
 All air pipes are 915 mm high.



© 2021

Lloyd's Register
 Foundation

0084/4

Particulars of Gangway Cargo and Coaling Ports :—

N O N E

Particulars of Scuppers and Sanitary Discharge Pipes :—

Sanitary discharges from upper and bridge deck accom:-All bath and wash basin wastes, W.C. pipes and scuppers are led overboard below upper deck through S.B.N.R.V. at ships side controlled from the upper deck with open/shut indicators. 2 @ 100 mm dia. (p & s)
The open upper deck is drained by 5 @ 50 mm dia. scuppers led overboard below upper deck with stop cocks at lower end.

Particulars of Side Scuttles and Deadlights :—

Side houses:- 20 @ 300 mm dia. hinged brass side scuttles with maleable cast iron deadlights.

Vertical distance of Sill of lowest Side Scuttle above top of keel No side scuttles below upper deck.
Distance from amidships to centre of lowest Side Scuttle

Particulars of Guard Rails and Bulwarks :—

Upper Deck:- Bulwark of steel 5 mm thick with 125 x 58 x 11 mm rail bar and 100 x 6mm bulb plate supports spaced 1830 mm apart.
Bridge Deck:- 3 Guard rails with stanchions 1250 mm high and 1100 mm apart.

Particulars of Gangways, Lifelines, etc. :—

N O N E

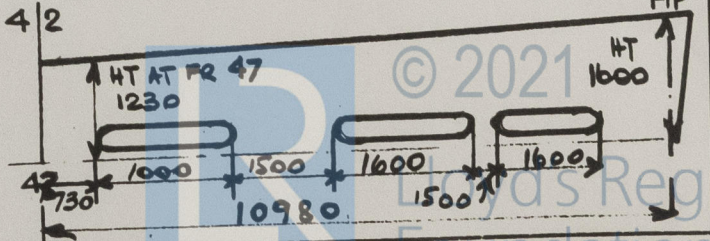
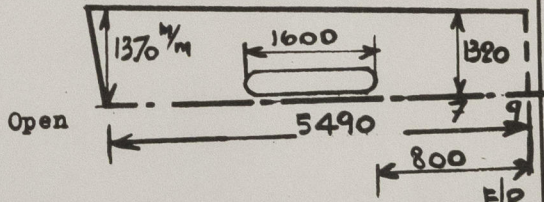
Particulars of Freeing Arrangements.

	Length of Bulwark	Height of Bulwark	Size of Freeing Ports	Number each side	Area each side	Rule area each side
After Well	18'-0"		1600 x 150	1		
Forward Well	36'-0"		1600 x 150 1000 x 150	2 1		

State position of each freeing port
(F. and A. position and height above deck edge) { After Well :—
Forward Well :—

State whether the freeing ports are fitted with shutters, bars, or rails, and give particulars of such :—

Additional area where sheer is less than standard.



0084 314

PARTICULARS OF PROTECTION TO OPENINGS, ETC.

HATCHWAYS ON FREEBOARD AND SUPERSTRUCTURE DECKS.

Description of Hatchway
Dimensions of Hatchway
COAMINGS	<div> <div>Height above Deck</div> <div>Thickness</div> <div>Stiffeners</div> <div>Brackets, Stays</div> </div> <div> <div>Sides</div> <div>Ends</div> <div>Sides</div> <div>Ends</div> </div>
HATCH BEAMS	<div> <div>Number</div> <div>Spacing</div> <div>Scantling and Sketch</div> </div> <div>Bearing Surface</div>
FORE AND AFTERS	<div> <div>Number</div> <div>Spacing</div> <div>Unsupported Lengths</div> <div>Scantling* and Sketch</div> </div> <div>Bearing Surface</div>
HATCH COVERS	<div> <div>Material</div> <div>Thickness</div> <div>How fitted</div> <div>Bearing Surface</div> </div>
Spacing of Cleats
Number of Tarpaulins...

N o n e

- *Are wood fore and afters steel shod at all bearing surfaces?
- Are battens and wedges efficient and in good condition?
- Are tarpaulins in good condition and in accordance with rule requirements?
- Are lashings provided in accordance with rule requirements?
- Are wood covers fitted with galvanised end bands?

Particulars of any special features :— (Timber Deck-cargo Fittings, Skylights, Sewage Systems, Ash Ejectors, Rubbish Shoots, etc.)

