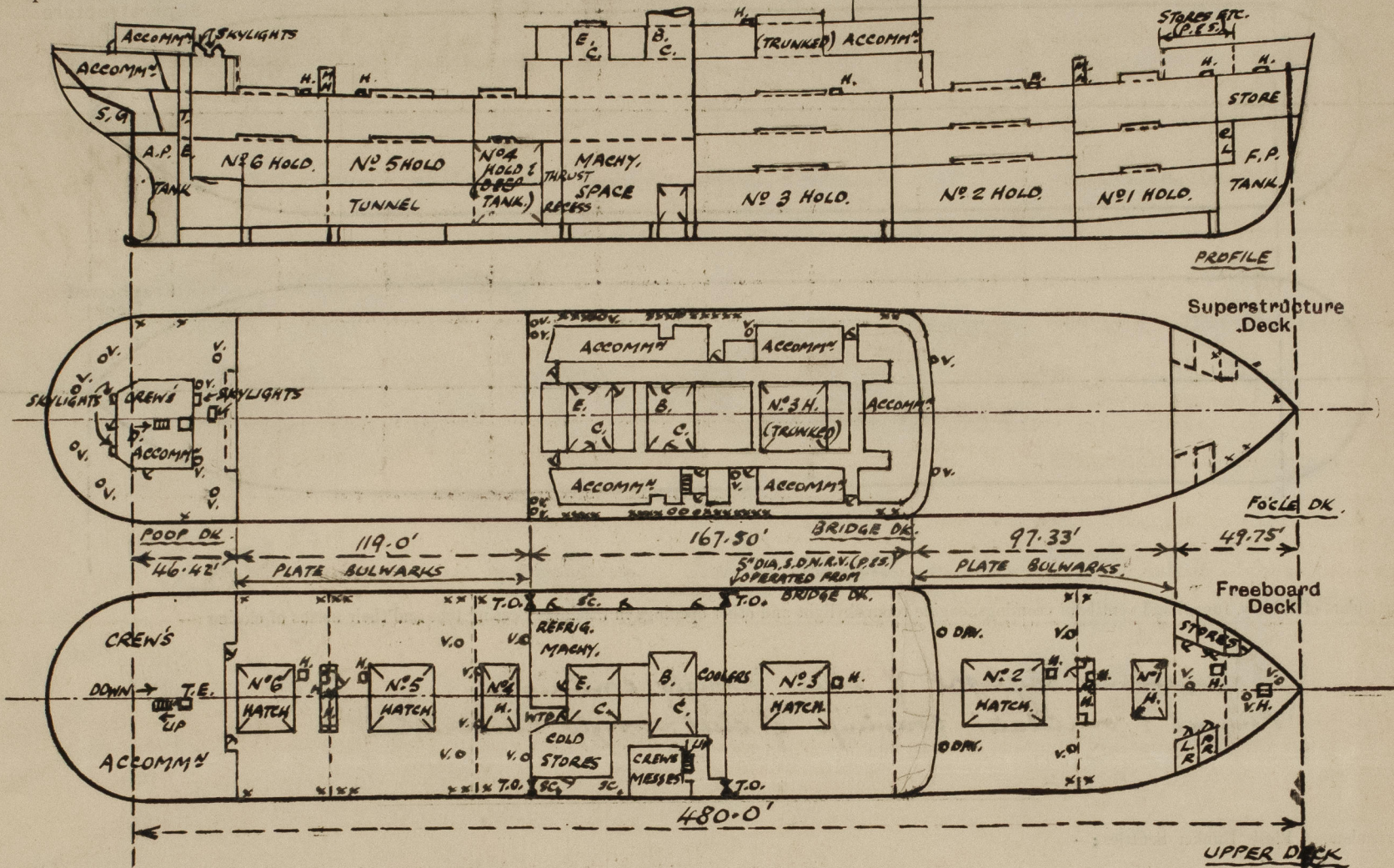


Lloyd's Register of Shipping.  
SURVEYS FOR FREEBOARD.  
(CONDITIONS OF ASSIGNMENT.)

Ship's Name *S. S. "ARABIA"* Port of Survey *Sunderland*  
Official Number *182394* Surveyor's Signature *A. Forsyth*  
Nationality and Port of Registry *British, Liverpool* Date of Survey *During Construction*

Disposition and dimensions of superstructures, trunks, deckhouses and machinery casings to be inserted in the diagrams and tabular statement: -



Particulars of Superstructures, Trunks, Casings, Deckhouses.								
	Coaming	Plating	Stiffeners	Spacing	End Attachments of Stiffeners	Size of Openings	Height of Sills	Height of Casings
Poop Bulkhead	.38"	.38"	7"x 3 1/2"x .46" O.A.	30"	Welded at bottom Lugged at top	2 @ 5'-0"x 2'-0" 4'-6"x 2'-3"	24"	8'-0"
Raised Quarter Deck Bulkhead	✓							
Bridge, After Bulkhead	.30"x 8'-32"	.30"	5"x 3"x .30" O.A.	30"-36"	Riveted to boundary angles	2 @ 5'-0"x 3'-1" 1 @ 5'-0"x 2'-6" (W.T.)	20"	8'-6"
Bridge, Forward Bulkhead	.44"	.44"	10"x 3 1/2"x .48"	30"	Welded at bottom Lugged at top	None	✓	8'-6"
Forecastle Bulkheads... (OPEN)	.30"	.30"	3"x 3"x .30" E 5"x 3"x .30" O.A.	30" & 27"	Riveted to boundary angles	3 @ 5'-0"x 2'-0" (W.T.) 1 @ 5'-0"x 4'-0" (W.T.) 1 @ 5'-6"x 2'-3"	20" 13"	8'-0"
Trunk, Aft	✓							
Trunk, Forward	✓							
Exposed Machinery Casings on Freeboard or Raised Quarter Decks	✓	See C II (Cont 5)						
Exposed Machinery Casings on Superstructure Decks	✓							
Machinery Casings within Superstructures not fitted with Class I Closing Appliances	.30"	.26"	3"x 3"x .30"	27"-30 1/2"	Riveted to beam at top & free at bottom	None	✓	8'-6"
Deckhouses on Flush Deck Ships	✓							

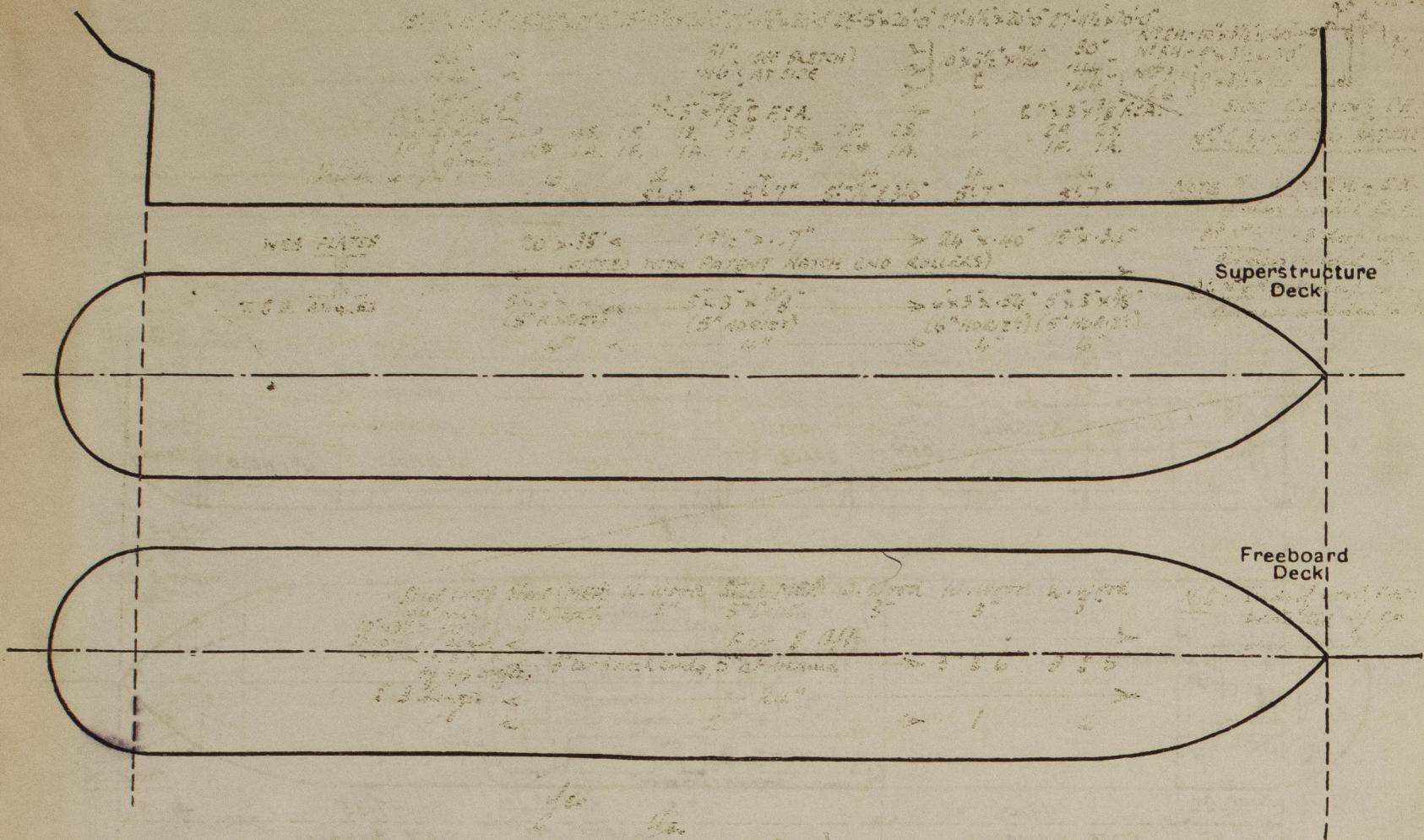
Particulars of Closing Appliances (state if capable of being manipulated from both sides).

Poop Bulkhead	Hinged <del>hardwood</del> <sup>Steel W.T.</sup> doors, operated from both sides. ✓
Raised Quarter Deck Bulkhead	✓
Bridge, After Bulkhead	3" Shifting boards in full height channels & hinged steel W.T. door, operated from both sides ✓
Bridge, Forward Bulkhead	None
Forecastle Bulkheads...	Hinged steel W.T. doors, operated from both sides. ✓
Exposed Machinery Casings on Freeboard or Raised Quarter Decks	See C II (Cont 1)
Exposed Machinery Casings on Superstructure Decks	✓
Machinery Casings within Superstructures not fitted with Class I Closing Appliances	✓
Deckhouses on Flush Deck Ships	✓



## PARTICULARS OF PROTECTION TO OPENINGS, ETC.

The following diagrams should be used to indicate the positions of cargo and coaling hatchways, gangway, cargo and coaling ports, ventilators, companionways, etc., which would affect the seaworthiness of the ship:—



Particulars of fiddley, funnel and ventilator coamings, engine room skylight and other openings in machinery casing tops and their means of closing :—

Engine room skylight of steel strongly constructed. ✓

Funnel & ventilator casings of steel strongly constructed.

Particulars of Flush Bunker Scuttles:—

None

Particulars of Companionways: — Access & vent trunks to hold spaces in masthouses. Openings 4'-9" x 2'-3", coamings 20", with hinged steel W.T. doors (6 toggles) operated both sides, (access latches inside of W.T. construction). In midship house on Bridge deck openings 4'-10" x 2'-0", coamings 21", with hinged solid hardwood doors, operated both sides, enclosing companionways to accommodation, etc., and engine room casings. In after deckhouse, openings 4'-10" x 2'-0", coamings 21", with hinged solid hardwood doors, operated both sides, enclosing companionways to accommodation spaces & tunnel escape, and to steering gear space.

Particulars of Ventilators in exposed positions on freeboard and superstructure decks :-

On Fore Deck.	{ 5 @ 5" dia., goose-neck vents, 1'-8" to openings, to Fore Store spaces.
On Upper Deck.	{ 2 @ 10" " , Cold vents, coaming 3'-6" x 32" to F.P. Spaces. 1 @ 24" " , Mushroom vent, " 5'-9" x 42" to No 1 Hold spaces. } In Fore 2 @ 24" " " " " 6'-3" x 42" " No 2 " " (efficiently stayed) } Tunnels 2 @ 28" " D.P. " " to No 2 Hold spaces 2 @ 18" " , Cold vents, coamings 20'-0" x 40" to No 4 Hold spaces (efficiently stayed) 2 @ 18" " , Mushroom vents, " 8'-0" x 40" - Dupl tank " " 2 @ 30" " D.P. Vents to No 5 Hold spaces
On Mast House Top.	{ 4 @ 24" " , Mushroom vents, coaming 2'-0" x 42" to No 1 & 5 Hold spaces 2 @ 24" " " " " 6'-3" x 42" " No 6 Hold spaces
On Bridge Deck.	{ 2 @ 18" " , Cold vents, " 3'-9" x 40" " Bridge tunnels. 2 @ 18" " , Mushroom vents, " 4'-3" x 40" " " (efficiently stayed) 3 @ 10" " " " " 4'-3" x 32" " Crew spaces ( " ) 1 @ 10" " , Cold vents, " 2'-6" x 32" " Refrig. space 1 @ 9" " , Mushroom vent, " 4'-3" x 32" " C.O. 2 Room (efficiently stayed) 2 @ 18" " " " " 5'-6" x 40" " Dupl Tank ( " ) 2 @ 10" " " " " 4'-2" x 32" " Bridge Tunnels ( " )

Particulars of Air Pipes in exposed positions on freeboard, raised quarter, or superstructure decks :-

On Post Deck.	{ 2 @ 13" dia., C.V., coaming 2'-6" x 34" to Prop spaces. 2 @ 24" " , C.V., " 11'-6" x 42" " No 6 Spaces (efficiently stayed) 2 @ 11" " , C.V., " 2'-6" x 32" " Prop Spaces. 2 @ 10" " , C.V., " 2'-6" x 32" " Steering gear. 13 @ 5" dia., goose-neck vents, 1'-9" to openings, to Prop Spaces (Spaces)
On Boat Deck.	{ 2 @ 24" dia., C.V., coaming 3'-6" x 42" to No 3 Hold spaces. 2 @ 28" " D.P. Vents, to No 3 Hold spaces 1 @ 9" " , C.V., coaming 1'-9" x 32" to C.O. 2 store. 2 @ 10" " , C.V., " 1'-9" x 32" " Bridge tunnels.
On Docking Bridge aft	{ 2 @ 13" dia., C.V., coaming 2'-6" x 34" to Prop spaces. 1 @ 24" " , C.V., " 3'-6" x 42" to Tunnel.

Ventilators fitted with wood plugs and canvas covers as necessary.

Particulars of Air Pipes in exposed positions on freeboard, raised quarter, or superstructure decks :—

To peaks, to D.B. feed & fresh water tanks & cofferdams, to D.B. oil fuel or water ballast tanks, to deep O.F. and settling tanks, to dust keel & to rudder trunk on Poop, Bridge & Fo'c'sle decks, of 2", 2½", 3", 3½", 4" & 5" dia., openings 18" to 21" above deck. To deep tank on bridge dk., 7" dia., openings 24" above deck. To D.B. oil fuel or water ballast tanks & cofferdams, to No. 1 hold wells, to dust keel and to deep tank, on upper deck, 2", 3", 5" & 7" dia., openings 36" above deck.

Airpipes fitted with wood plugs or gauges and canvas covers.



© 2021  
Name of Ship ..... ARABIA .....

Freeboard Report Examined  
(Date) ..... 1.6.57 .....

Signed ..... No 2 ..... 0117 2/3



### Particulars of Scuppers and Sanitary Discharge Pipes :—

Particulars of Side Scuttles:—

Vertical distance of Sill of lowest Side Scuttle above top of keel (*for of A.P. 8'-0"*) *37'-7"*  
(*Side scuttles fitted below freeboard deck, aft only*) ✓

Particulars of Gangways, Lifelines, etc. :—

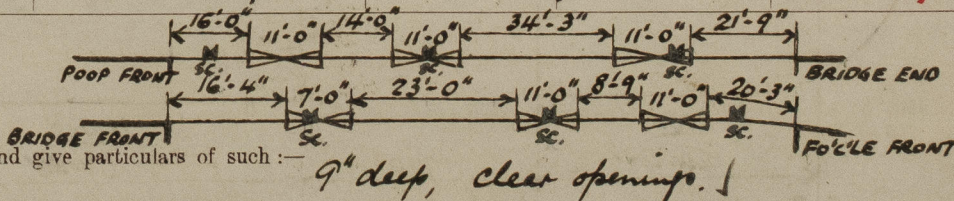
State position of each freeing port ... .. ( After Well :—

(F. and A. position and height above deck edge) { Forward Well:—

Height above deck edge  $14\frac{7}{8}$  (average)

State whether the freeing ports are fitted with shutters, bars, or rails, and give particulars of such:—

Additional & where sheer is less than standard.





### PARTICULARS OF PROTECTION TO OPENINGS, ETC.

HATCHWAYS ON FREEBOARD AND SUPERSTRUCTURE DECKS							
UPPER DECK							
Description of Hatchway ... ..	Nº 1	Nº 2	Nº 4	Nº 5	Nº 6	Nº 3	Nº 3
Dimensions of Hatchway ... ..	15'-9"x18'-0"	38'-1½"x21'-0"	15'-0½"x20'-0"	27'-11½"x20'-0"	25'-5"x20'-0"	27'-11½"x20'-0"	27'-11½"x20'-0"
COAMINGS							
Height above Deck ... ..	36"			31" / SEE SKETCH		10' x 3½" x 7/16"	30"
Thickness ... ..	.44"			.46" AT SIDE		E	.44"
Sides Ends							
Stiffeners ... ..	9' x 3½" x 7/16"			7' x 3" x 3/8" F.F.A.		✓	17' x 3" x 3/8" F.F.A.
Brackets, Stays ... ..	1P & 1S, E	4P, 4S, 1A, 1E	1P, 1S, 3P, 3S, 1A, 1E	1A, 1F, 1A, 1F	2P, 2S, 1A, 1F	✓	2P, 2S, 1A, 1F
HATCH BEAMS							
Number ... ..	6	2	4	4	4	4	4
Spacing ... ..	5'-5¾"	5'-0"	5'-7"	5'-7¼"	5'-7"	5'-7"	5'-7"
Scantling and Sketch ... ..	20"x38" (FITTED WITH PATENT HATCH END ROLLERS)	19½"x37"	24"x40"	15"x34"			
Bearing Surface ... ..	5' x 3" x .42" (5" HORIZ.)	5' x 3" x 3/8" (5" HORIZ.)	6' x 3" x .54" (6" HORIZ.)	5' x 3" x 3/8" (5" HORIZ.)			
FORE AND AFTERS							
Number ... ..							
Spacing ... ..							
Unsupported Lengths ... ..							
Scantling* and Sketch ... ..							
Bearing Surface ... ..							
HATCH COVERS							
Material ... ..	Steel (W.T.)	Steel (MEP)	W. Wood	Steel (MEP)	W. Wood	W. Wood	W. Wood
Thickness ... ..	.44" with 3" depth	3" depth	3"	3" depth	3"	3"	3"
How fitted ... ..	10' x 3½" x .50" L.S.P.			Fore & Aft			
Bearing Surface ... ..	secured by 44 bolts	3" at hatch ends, 5" at beams			3" x 6"	3" x 5"	
Spacing of Cleats ... ..	3 hinges			24"			
Number of Tarpaulins ... ..	✓			2 ✓		1 ✓	2 ✓

Boat OK

\*Are wood fore and afters steel shod at all bearing surfaces?  
 Are battens and wedges efficient and in good condition?  
 Are tarpaulins in good condition and in accordance with rule requirements?  
 Are lashings provided in accordance with rule requirements?

Yes  
 Yes  
 Yes (locking bars)

Particulars of any special features:—

Small Hatches:- To F.P. Store - 4'-0" x 3'-0", Coaming 9" x .40" (welded to dk.), with hinged steel W.T. covers .40" thk., secured by 10 Coggles.  
 To Special Store Ford - 2'-4" x 2'-1", Coaming 9" x .40" (welded to dk.), with hinged steel W.T. covers .40" thk., secured by 8 Coggles.  
 To No 2 Hold Space - 1'-11" x 2'-7", " 9" x .40" ( " " " ), " " " " " " .40" " , " " 8 " ✓  
 To No 3 Hold Space - 2'-0" x 3'-0", " 9" x .38" ( " " " ), 2'2" W. Wood covers fitted athwartship, beam surface 3" and complete with battens <sup>cleats</sup> and 1 tarpaulin.  
 No (IN B.S. TW. DK)  
 To No 5 Hold Space - 2'-1" x 2'-7", Coaming 9" x .40" (welded to dk.), with hinged steel W.T. covers .40" thk., secured by 8 Coggles.  
 To No 6 Hold Space - 2'-1" x 2'-7", " 9" x .40" ( " " " ), " " " " " " .40" thk., " " 8 " ✓

Steel Skylight Strongly constructed steel skylights on Poop Dk. at forward & after ends of deckhouse to crew's accommodation & washplaces (4 off), cramping 18" high above wood deck with steel hinging W.T. covers. ✓

Endorsement at first survey and at surveys for renewal of Certificate :—

The fittings and appliances are in accordance with the particulars shown on this form (or as now modified) and are in good condition.

