

M/V 'ADRI VIII'

CONSTRUCTION PLAN FOR STEEL CARGO CARRIER

SHIP NO. 701

DIMENSIONS:-108'-7" B.P. x 22'-0" B.M. x 10'-6" D.M.

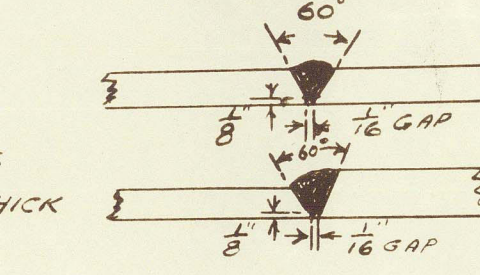
SCALE:-1/4" = 1 FOOT.

AS FITTED

WELDING

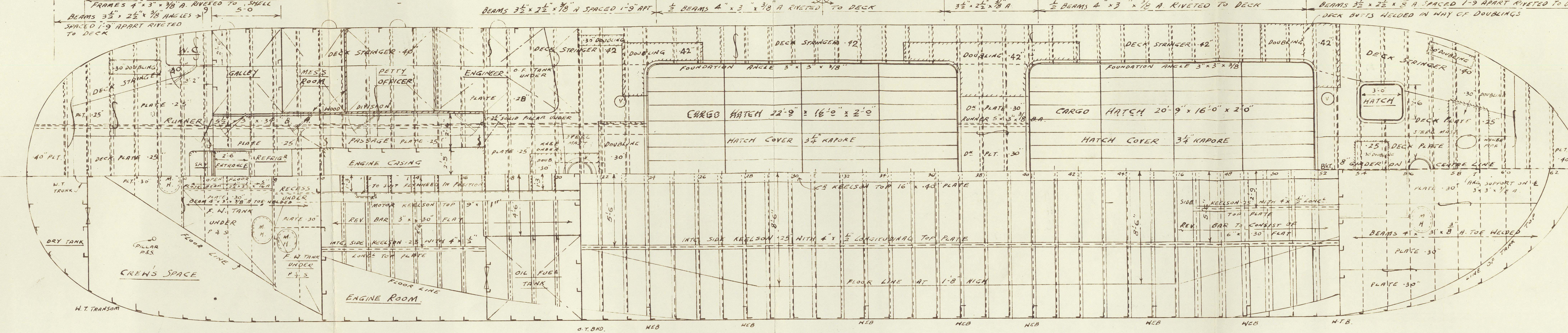
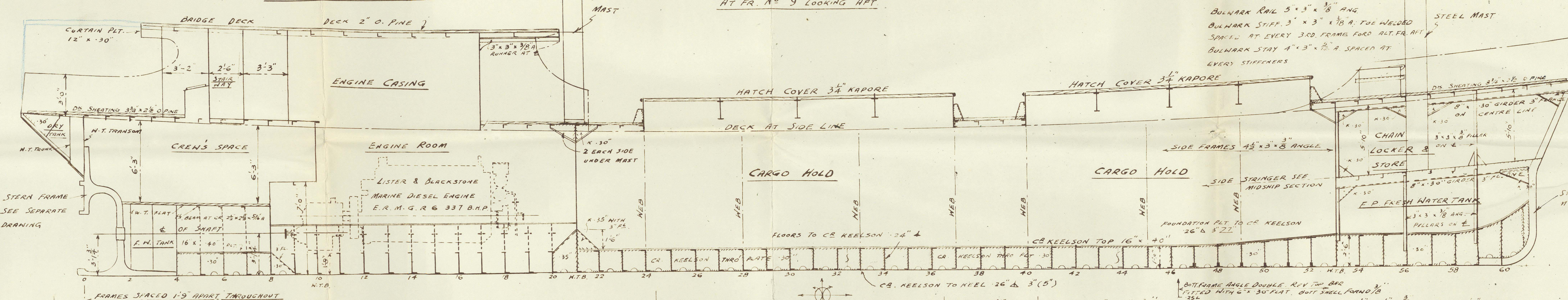
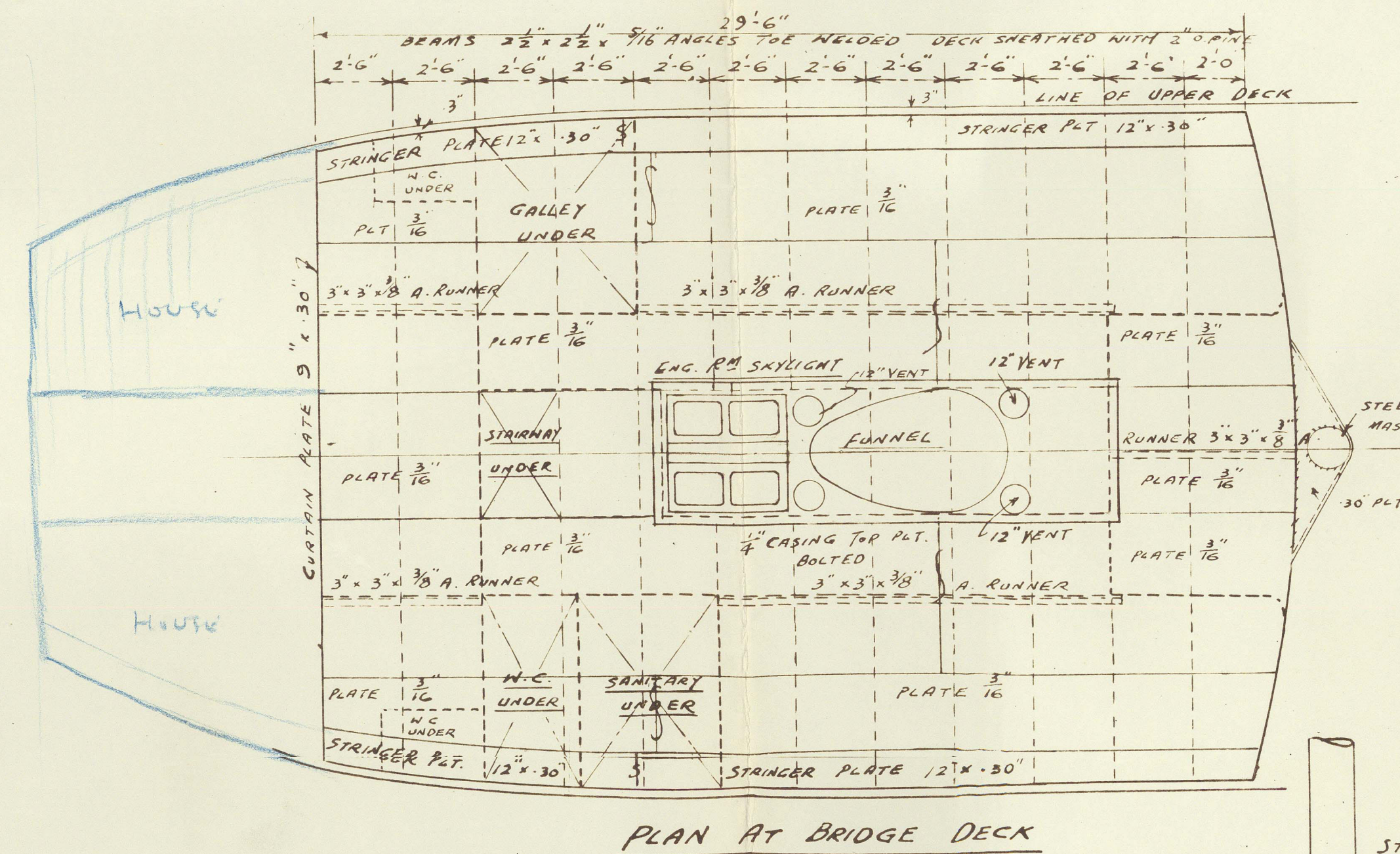
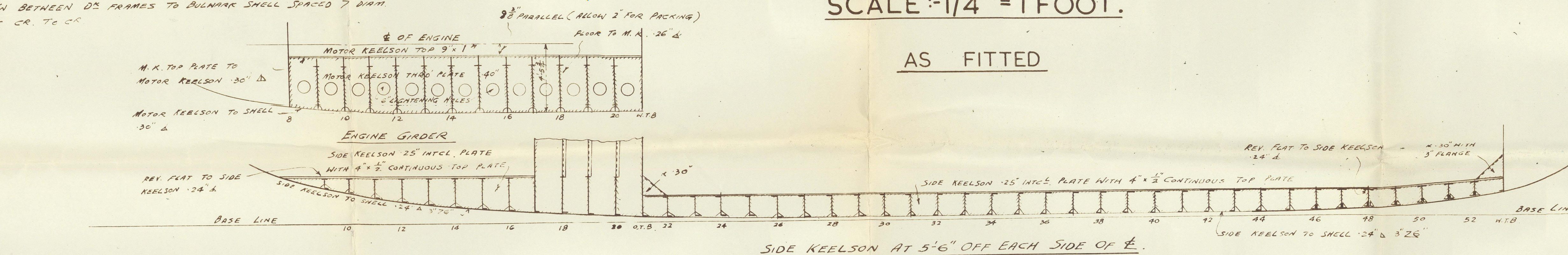
ALL SEAMS & BUTTS OF PLATING ABOVE 0.25 TO 0.4

SEAMS & BUTTS OF PLATING IN LITTLE DIFFERENCE IN THICK MAY BE WELDED

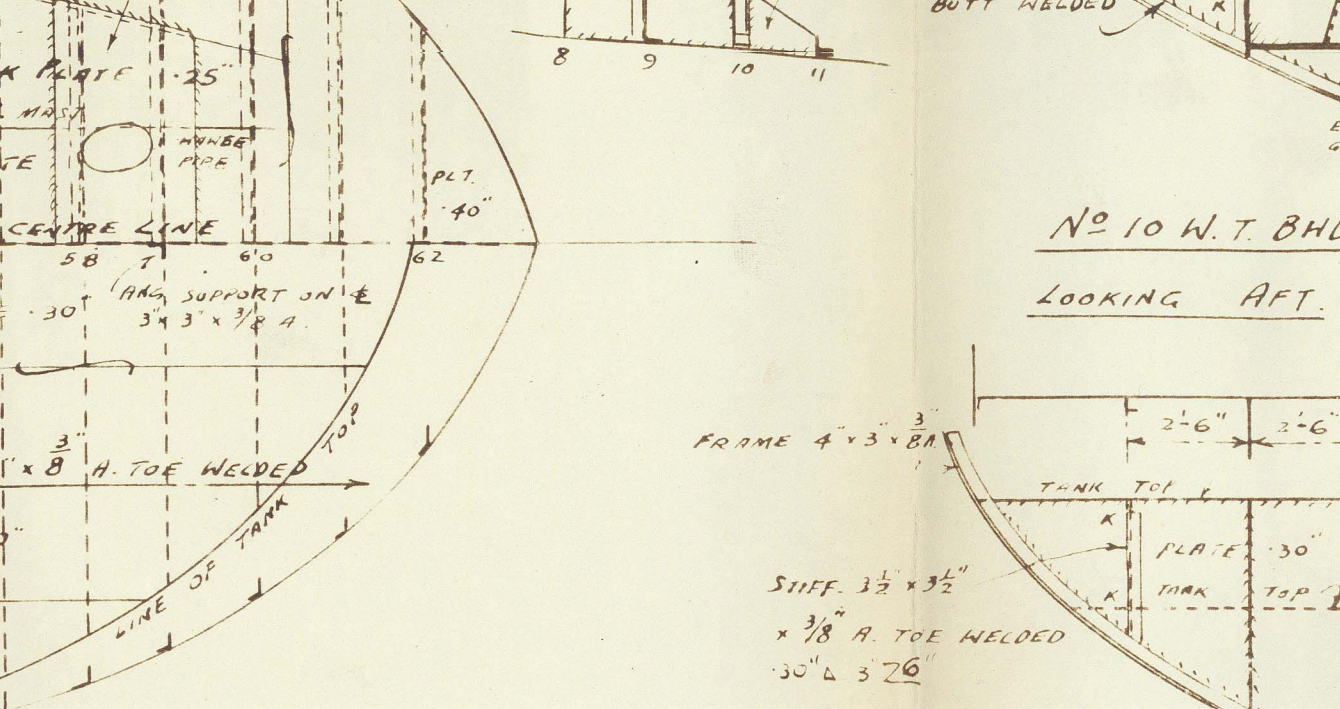
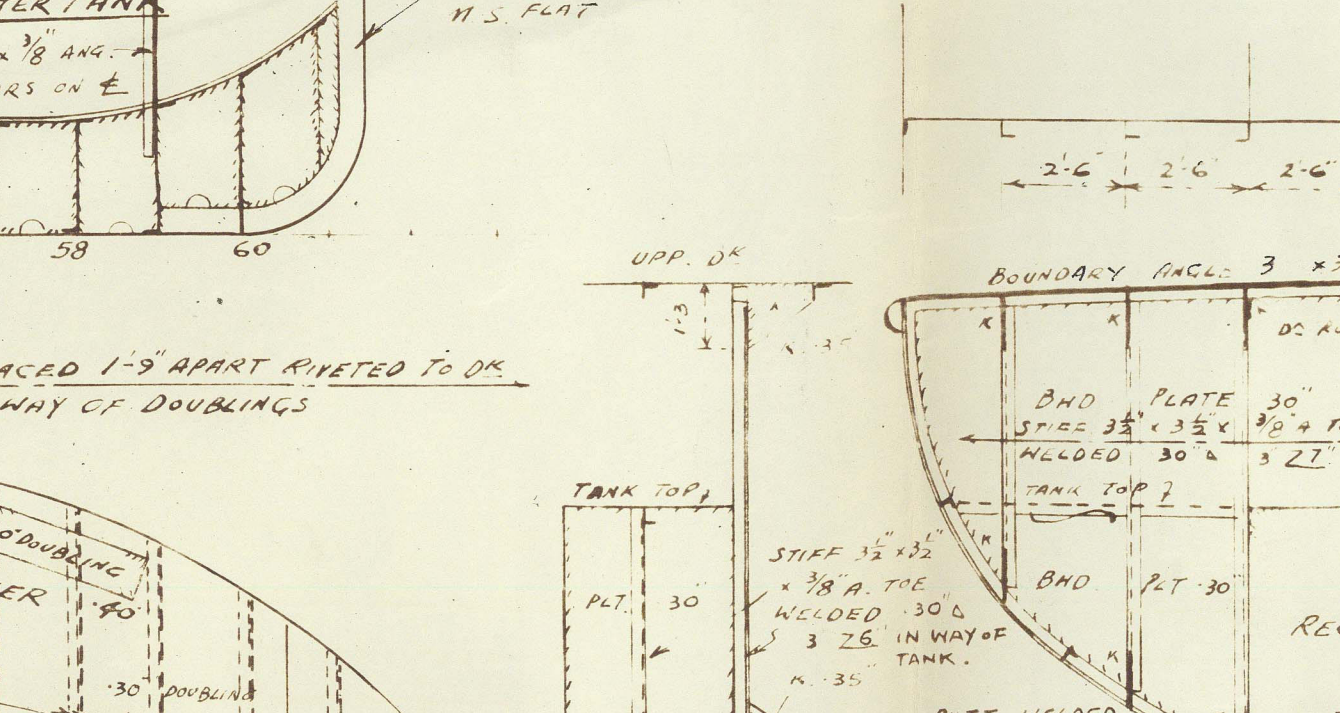
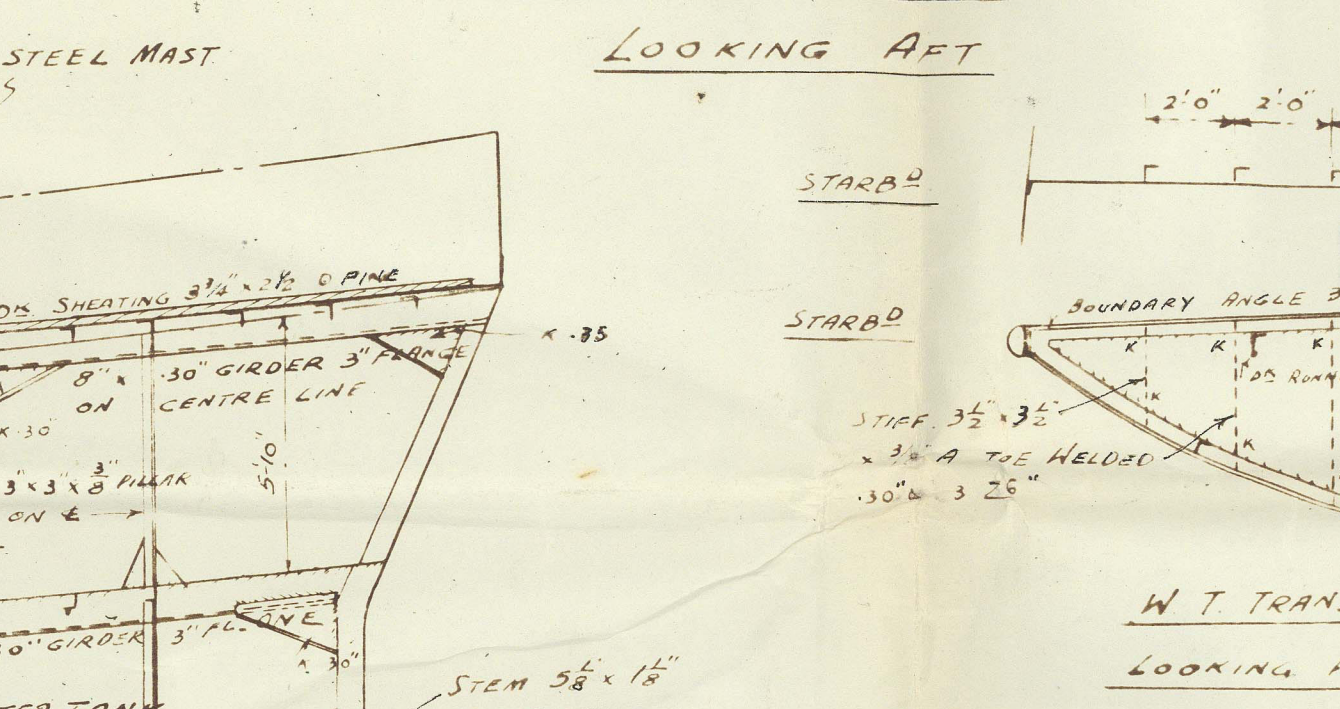
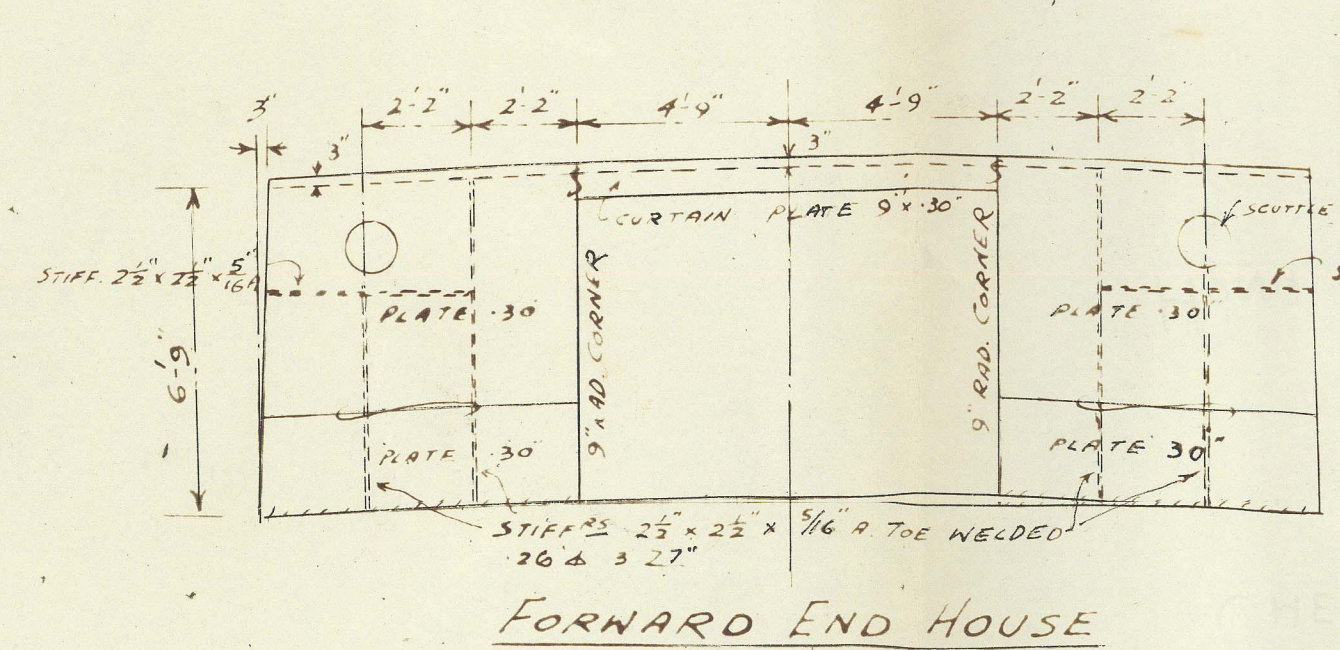
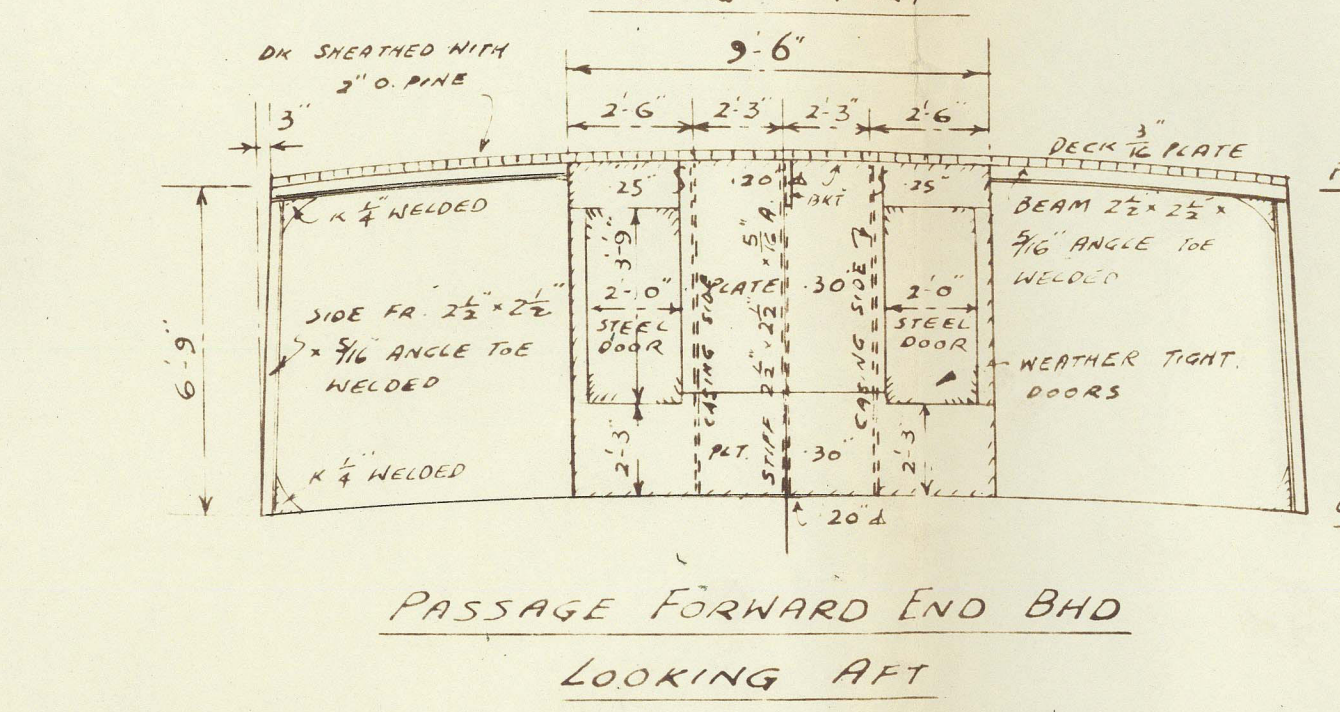
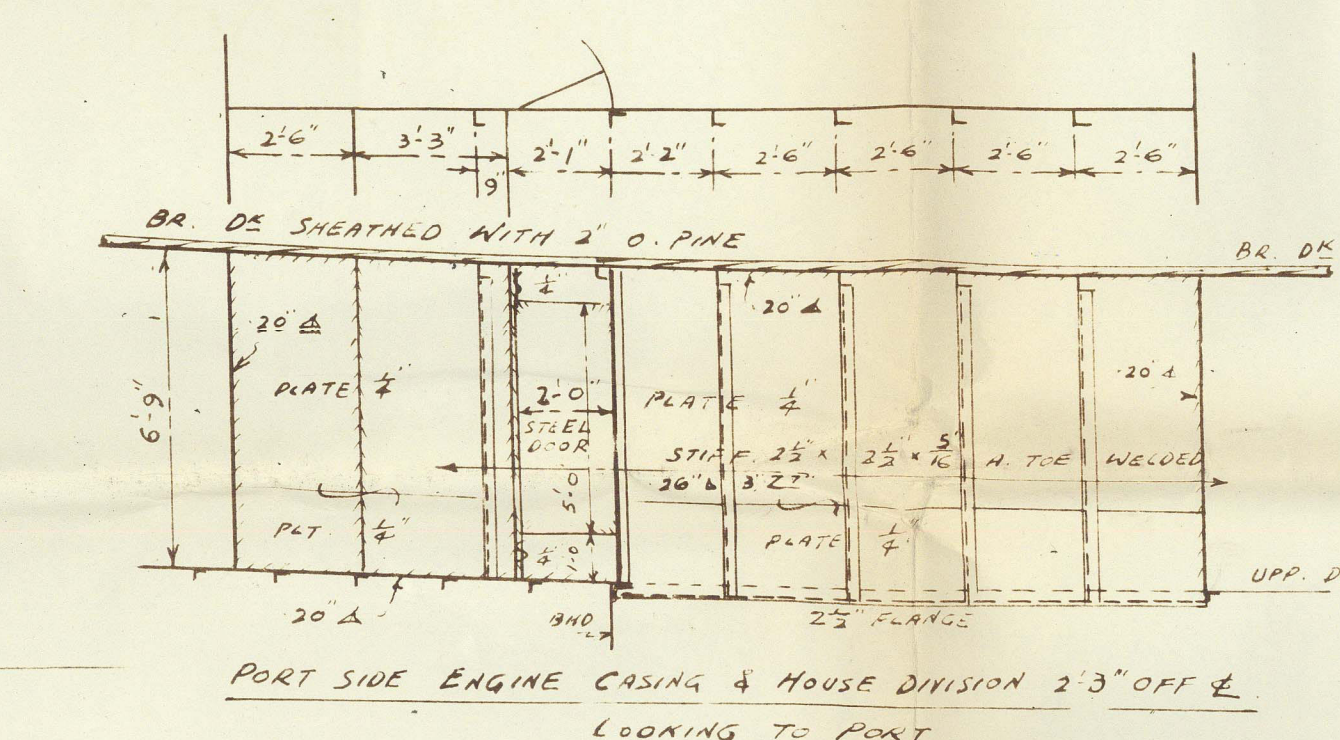


MARKED	DESCRIPTION	SYMBOLS
L L	CONTINUOUS FILLET ONE SIDE	L' = LEG LENGTH
L Δ	CONTINUOUS FILLET BOTH SIDES	L' = LEG LENGTH
L Δ a	INTERMITTENT FILLET STAGGERED	L' = LEG LENGTH a = LENGTH OF FILLET
L Δ a (0)	INTERMITTENT FILLET CHAIN	b = SPACING OF FILLET CB TO CB

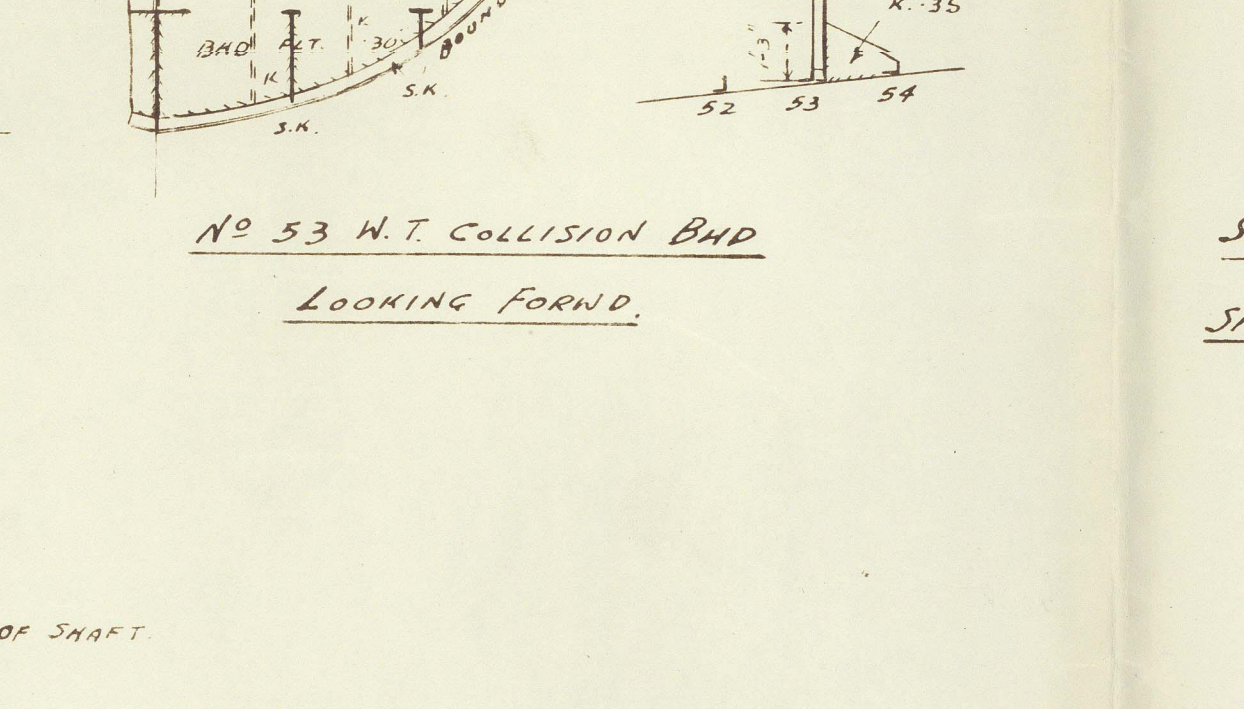
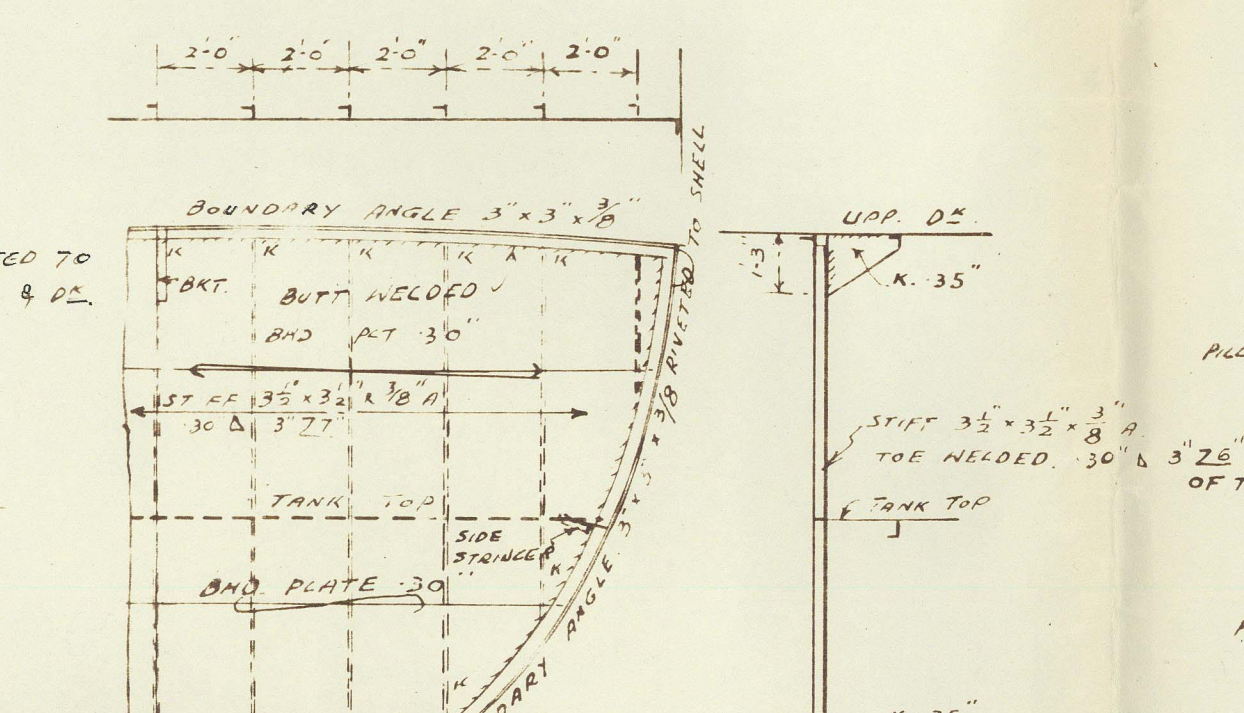
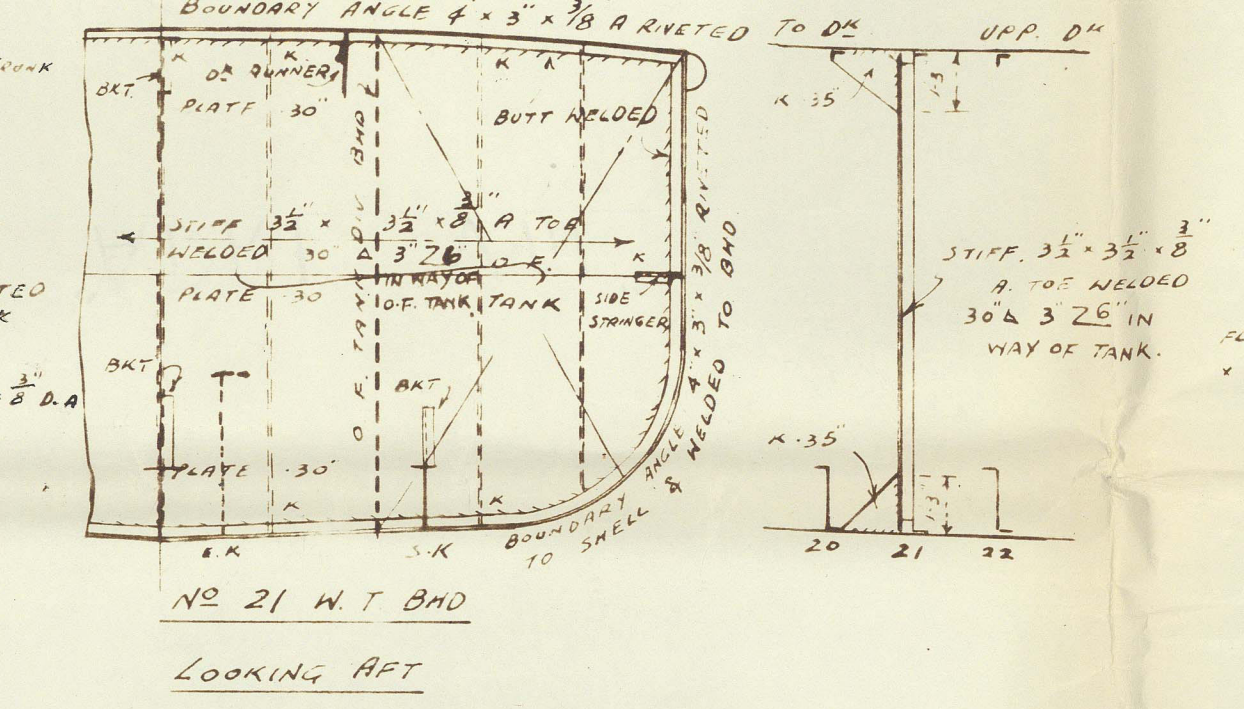
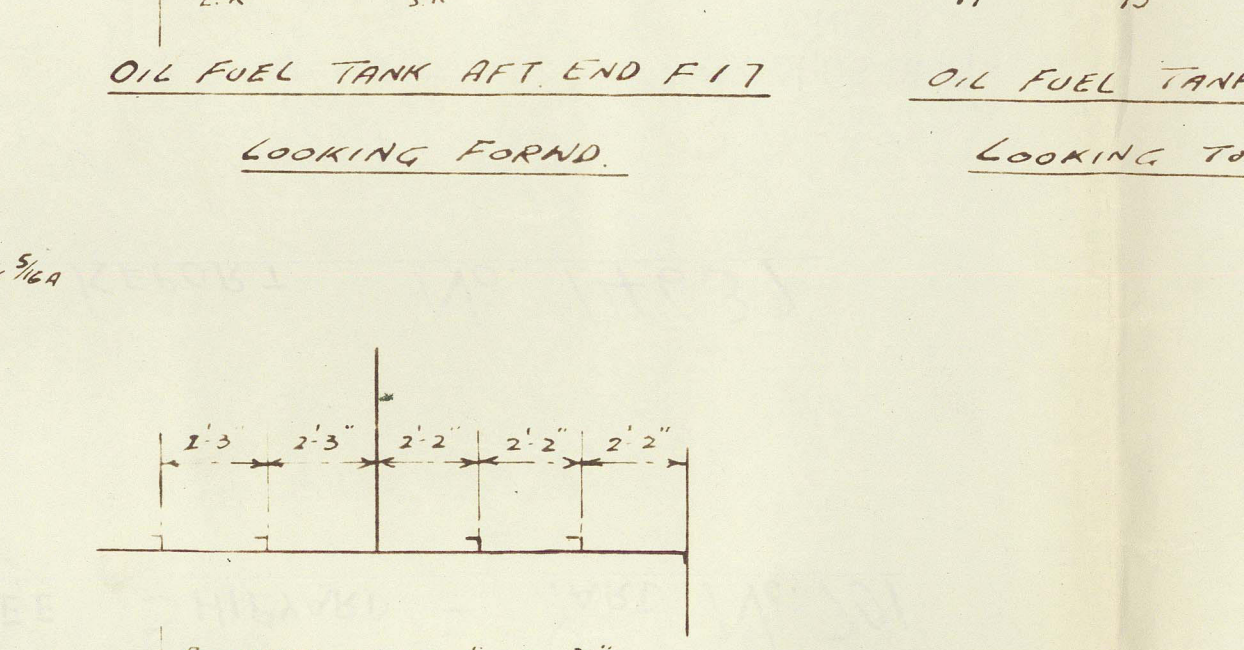
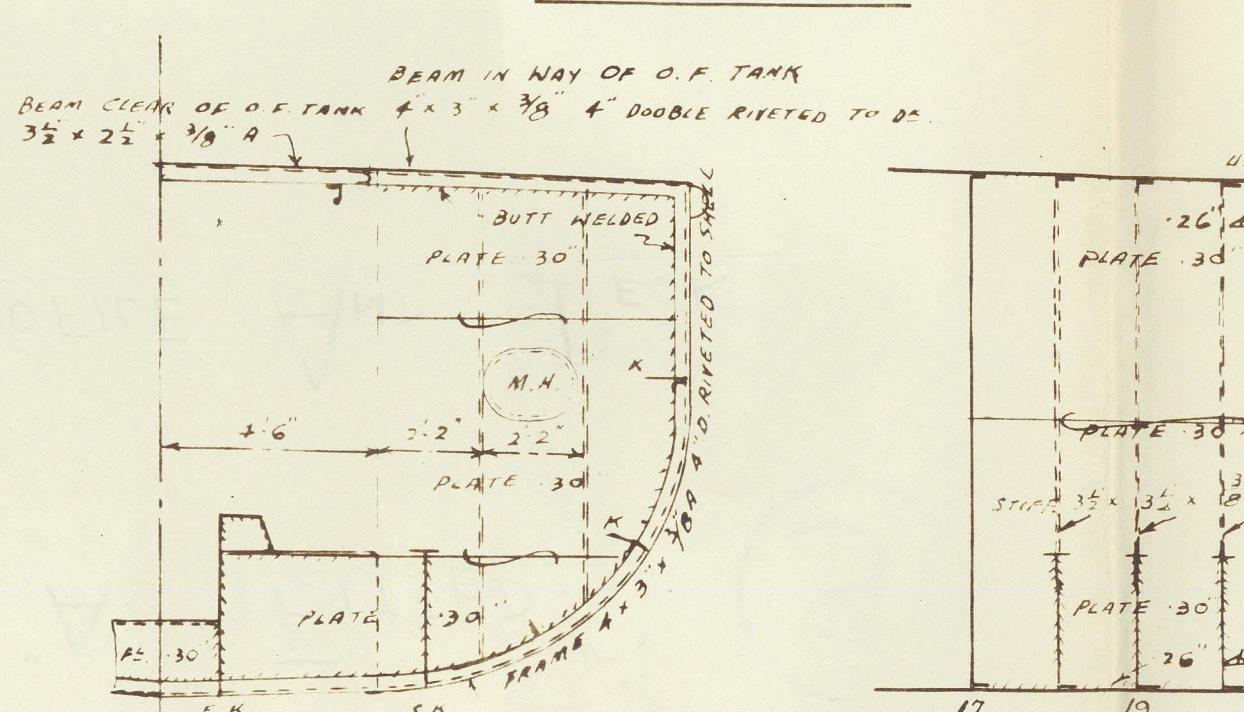
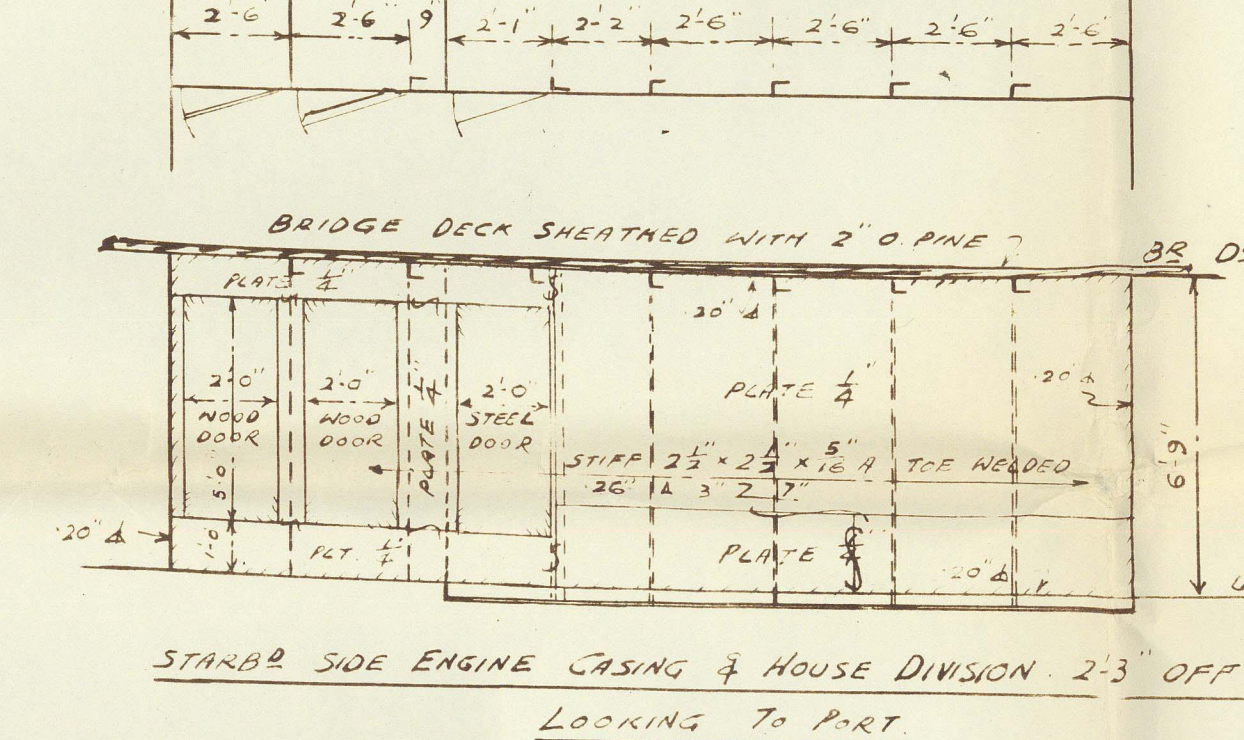
RIVETING LIST
 RIVETS IN SIDE FRAMES TO SHELL 7 DIAM APART CB TO CB & 3 1/2 DIAM APART IN FARE & RT PEAK TANKS & OIL FUEL TANKS.
 RIVETS IN BEAMS TO DECK SPACED 7 DIAM APART CB TO CB & 0 DIAM APART AT CORNERS OF TANKS.
 RIVETS IN BOUNDARY ANGLES TO SHELL AND DECK SPACED 3 DIAM APART.
 DOUBLE RIVETING IN OIL COMPARTMENT.
 RIVETS IN FOUNDATION ANGLES TO HATCH COAMING & DECK SPACED 5 DIAM APART CB TO CB.
 RIVETS IN BOTTOM FRAME TO SHELL IN THE FORWARD 25' SPACED 5 1/2 DIAM APART CB TO CB.
 RIVETS IN BETWEEN DS FRAMES TO BULKHEAD SHELL SPACED 7 DIAM APART CB TO CB.



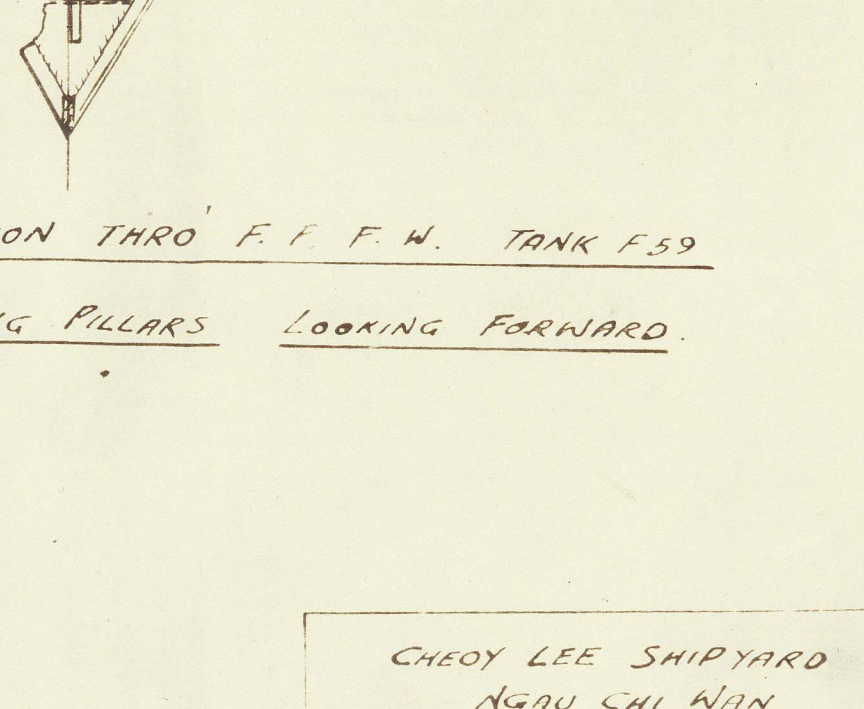
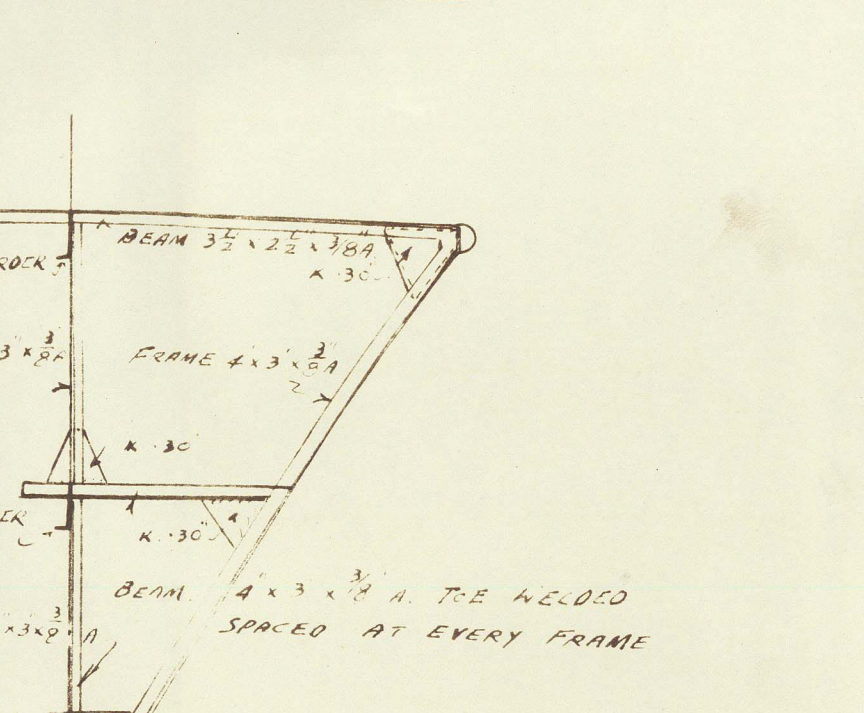
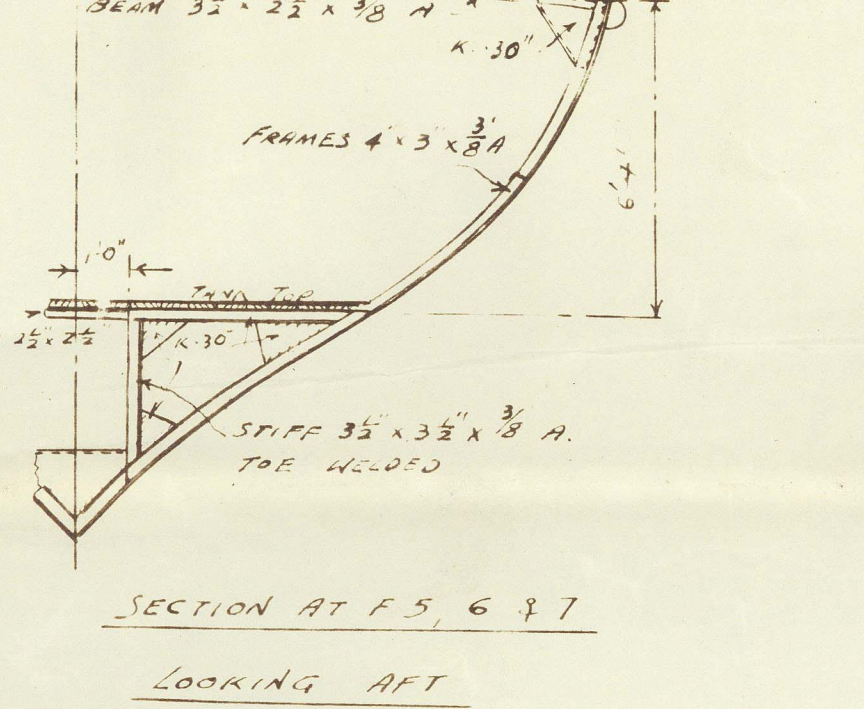
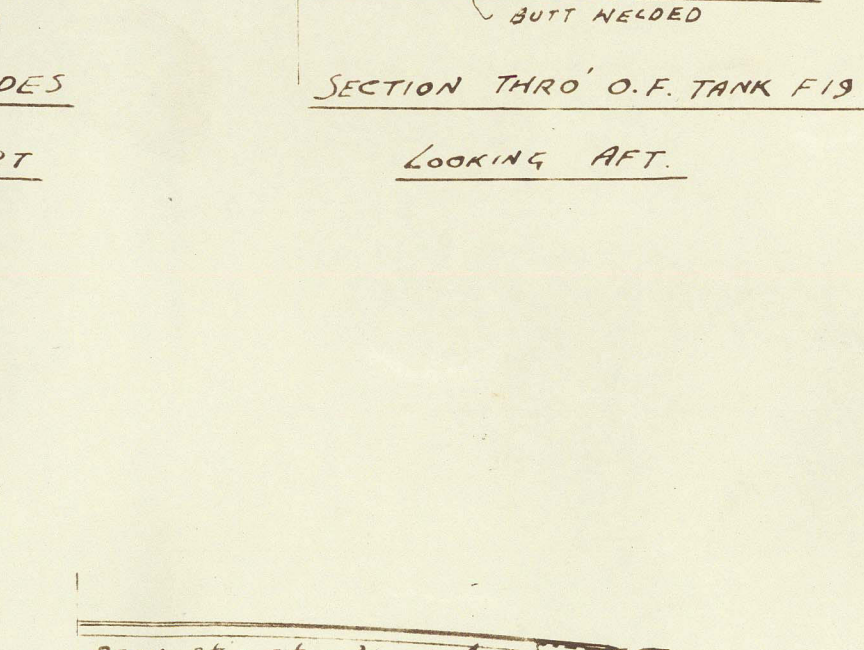
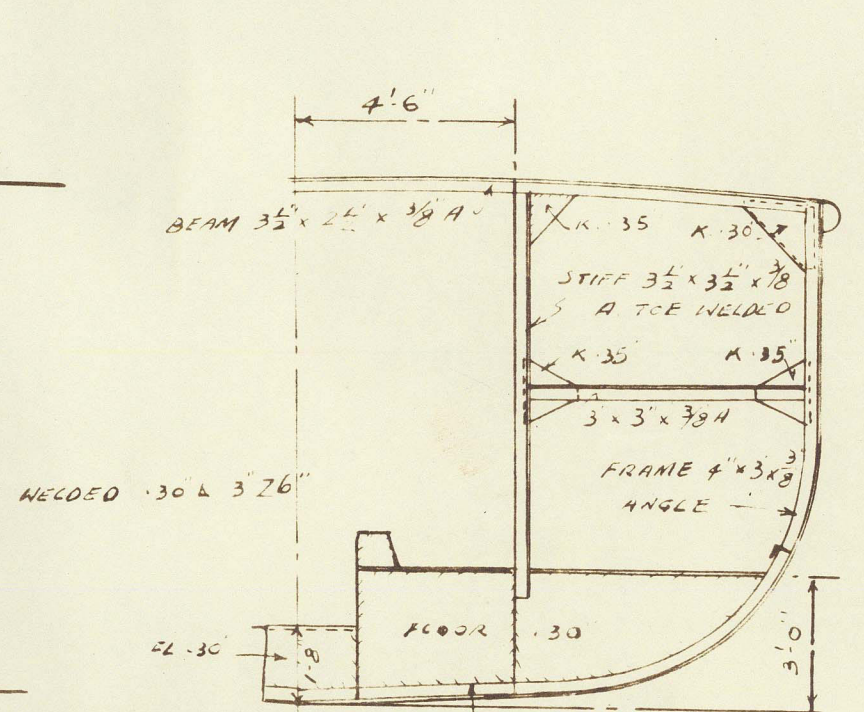
1/2 PLAN AT TOP FLOOR AND 1/2 PLAN AT DECK
 GUARD WIRES TO HAVE 3 WIRES.



NO 8 DIV N.T. BND
 LOOKING AFT.



NO 10 N.T. BND
 LOOKING AFT.



NO 12 N.T. COLLISION BND
 LOOKING FORWARD.

CHEONG LEE SHIPYARD
 NGOU CHU NIN
 KONGLOON
 DRAWN BY: NGOU CHU NIN
 CHECKED BY: NGOU CHU NIN
 DATE: 15-7-57
 DR NO: 201-2/3

APPROVED BY LLOYD'S
 ON 27TH AUG. 57

M.S. "ADRI VIII"

D/S 743

CHEOY LEE SHIPYARD - YARD No. 701

HONG KONG REPORT No. 14637

RECORDS DEPT.
LONDON.

"As Fitted"

3

PROFILE AND DECK.



© 2021

Lloyd's Register
Foundation

011665-011670-0041