

1908H

Equipment Numerals:

Tonnage Under Uppermost Continuous Deck	$333 \times 50.85 \times 30.42 \times 0.75 =$	3860
Forecastle:	$75 \times 50.85 \times 7.5 \times 0.5 =$	143
House on Top of Superstructure	$70 \times 42 \times 8 \times 0.5 =$	118
House on Boat Deck:	$30 \times 50 \times 8 \times 0.375 =$	45
		4166

Equipments:

2 off Bowers, each 52.5 Cwt. Call Weight 140.5 Cwt.
 1 off Spare Bower 44.5 Cwt. Stockless.
 Streamanchor 14.0 Cwt + 25% for Stock
 2 1/2" Cables (stud chain) 270 FMS (213.6 Cwt pr 100 FMS)
 90 FMS 1 1/4" Steelwire for Streamanchor. 6-12 Steelwire ropes, Hansers quality.
 120 FMS Towlines 1 1/4" Steelwire 6-12
 2 off 90 FMS 2 1/2" Steelwire } Hansers and Warps
 2 off 90 FMS 2 1/4" }

Midship Section

Ship Nr 118.

Scale 1/25

Dimensions: 101.5 m x 15.5 m x 6.65 m to Second deck - 9.25 m to Upperdeck
 333'-0" x 50'-10" x 21'-10" - 30'-5"

Cargo Ship to Class British Corporation, B5*

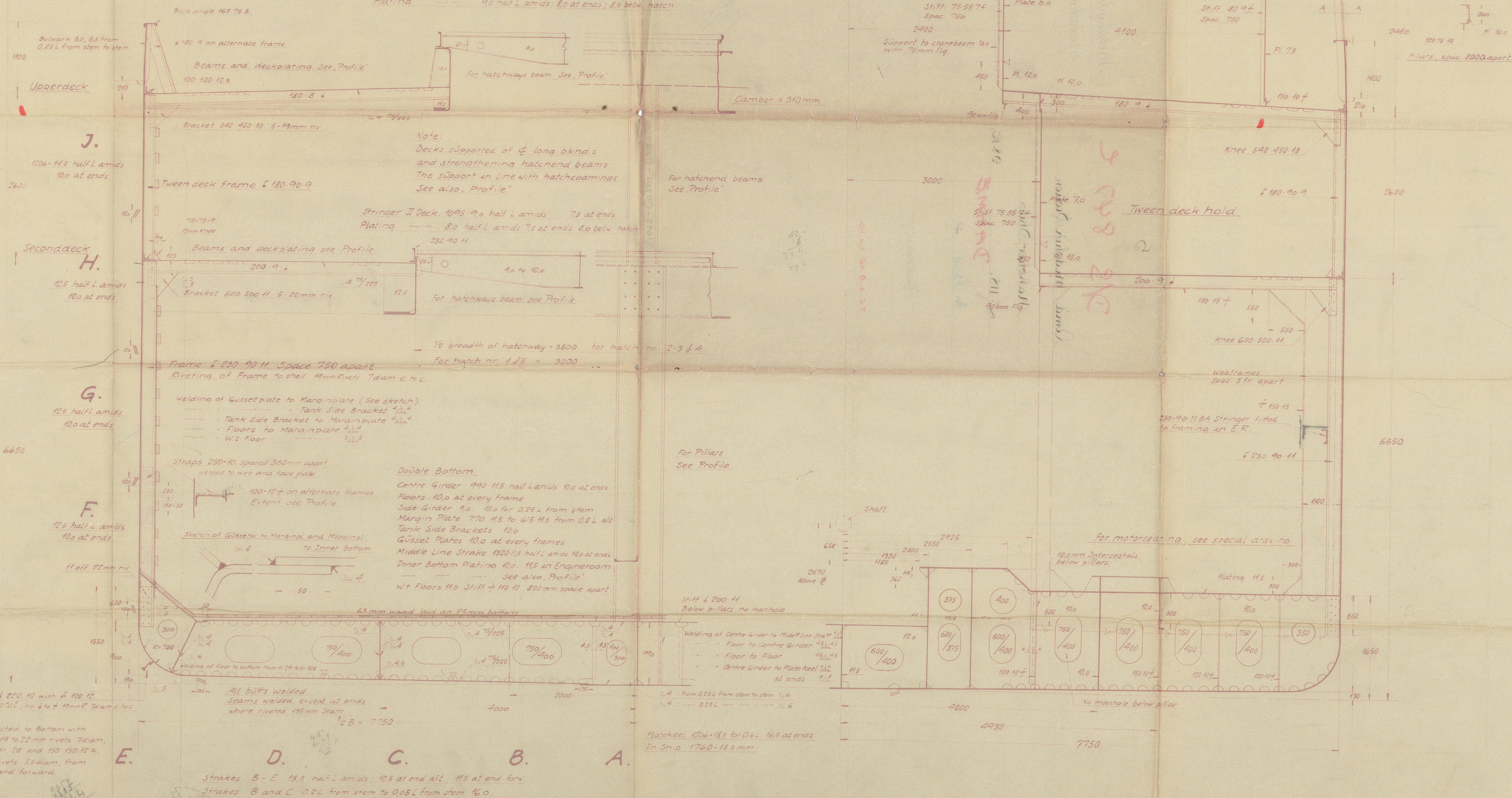
with Freeboard (Ice Strengthening)

Draught: 21'-9 1/2" above S.L.

6.64 m

6.65
6.64
10.1
31.5

Stringerpl. Upperdeck 1215 x 120 half L. amids; 8.0 at ends
 Plating 9.0 half L. amids; 8.0 at ends; 8.0 below hatch

Continuous Frames
for and aft

Note:

As all Material for the ship is on stock
 from the "Hansa ship", not all scantlings
 are in accordance with British
 Corporation Rules.

5 AUG 1946

1908H

Command
 9.8.46
 J.H.

118051

Mr.	General	Mr.	Mr.	Mr.	Mr.
Approved by					
Nasekov O. Vasov					
118					
1/25					
Middelspant					
118051					

© 2021

01693-01701-0237

Lloyd's Register

Foundation

5

D/S 847. c.

Amd. Midship Section

Nahokov Shiba

No. 118.

9.8.46.

DAHME

2m Gerd *

Print carrier

T.C. 4.9.46 For 118.



© 2021

Lloyd's Register
Foundation

011693 - 011701 - 0227

Midship/Section

Nakokov 118.

5 AUG 1946

BA7



© 2021

Lloyd's Register
Foundation