

LLOYD'S REGISTER OF SHIPPING

Index No.
(For London Office only.)

SURVEYS FOR FREEBOARD

(CONDITIONS OF ASSIGNMENT)

Ship's Name..... "R O S P I G G E N"

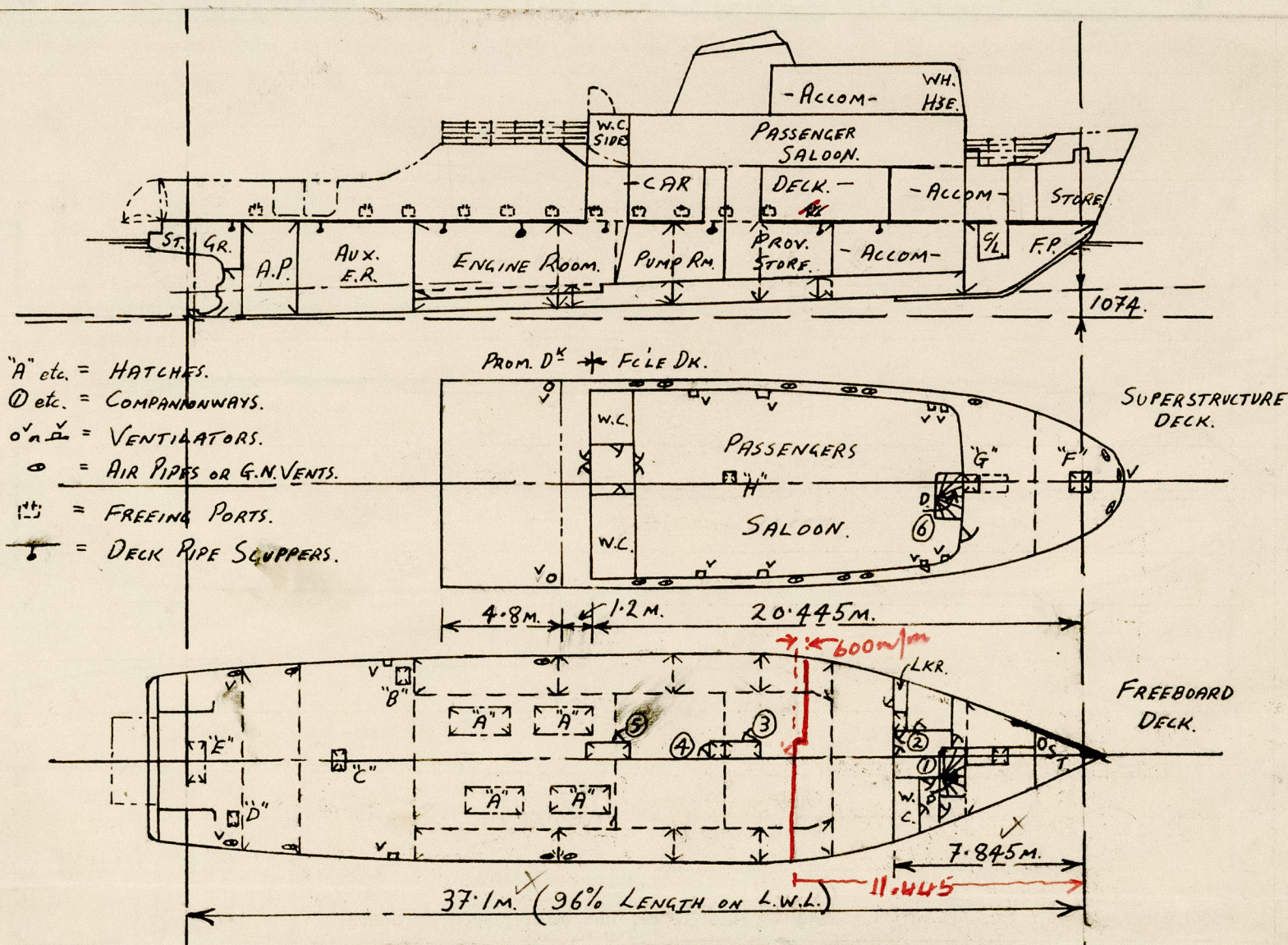
Port of Survey..... Åmål

Official Number..... 10045

Surveyor's Signature..... *L. Brewer*

Nationality and Port of Registry..... Swedish, Grisslehamn.

Date of Survey..... 6, 60.



Particulars of Superstructures, Trunks, Casings, Deckhouses.

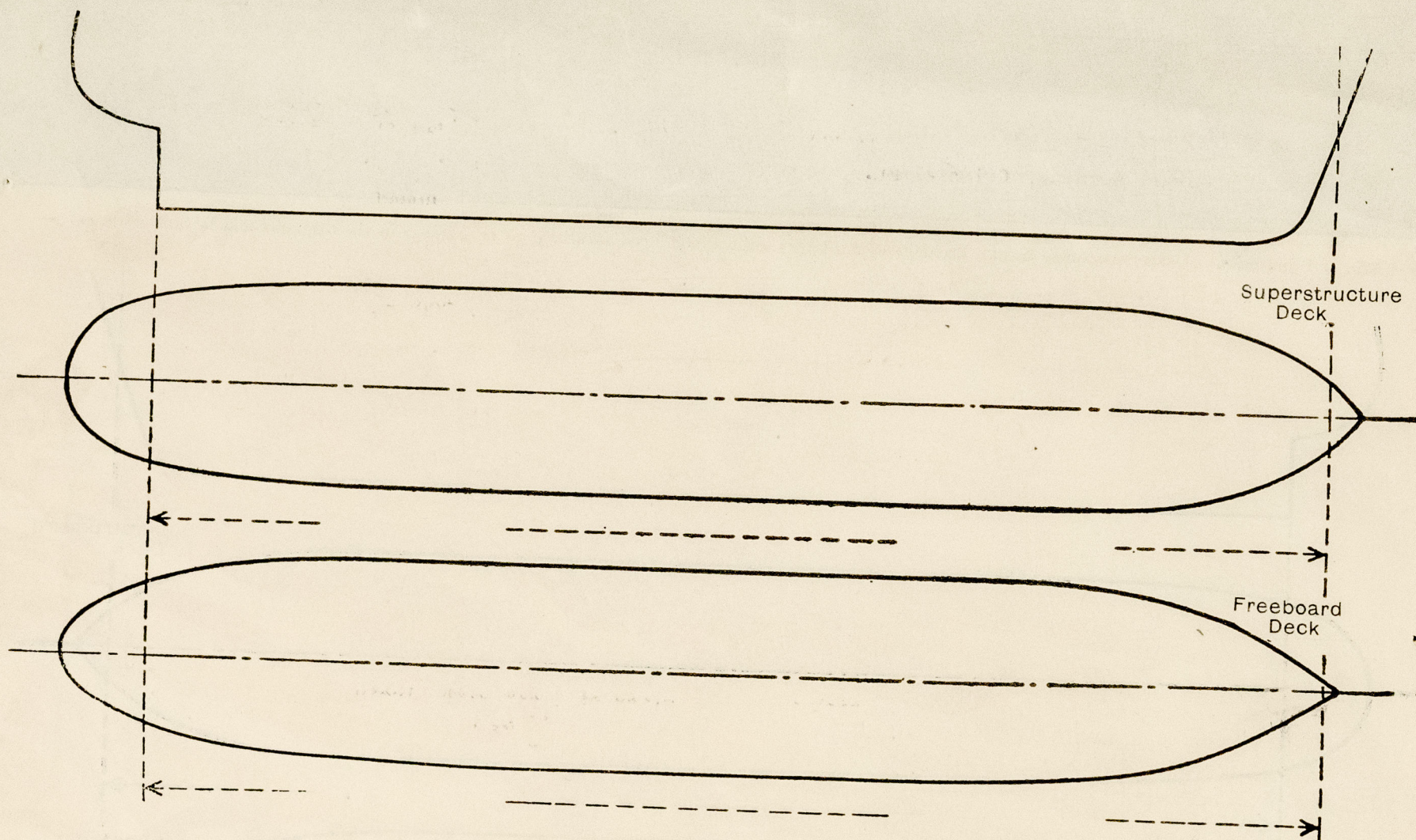
	Coaming mm.	Plating mm.	Stiffeners mm.	Spacing mm.	End Attachments of Stiffeners	Size of Openings	Height of Sills	Height, Beam to Beam mm.
Poop Bulkhead ...	---	---	---	---	---	---	---	---
Raised Quarter Deck Bulkhead ...	---	---	---	---	---	---	---	---
Bridge, After Bulkhead ...	---	---	---	---	---	---	---	---
Bridge, Forward Bulkhead ...	---	---	---	---	---	---	---	---
Forecastle Bulkhead (at 11.445M) (at 7.845M)	5	6.5	75 x 65 x 7 T	760	NONE	1320 x 630	610	2200
Trunk, Aft ...	---	---	---	---	---	---	---	---
Trunk, Forward ...	---	---	---	---	---	---	---	---
Exposed Machinery Casings on Freeboard or Raised Quarter Decks ...	---	---	---	---	---	---	---	---
Exposed Machinery Casings on Superstructure Decks ...	---	---	---	---	---	---	---	---
Machinery Casings within Superstructures not fitted with Class I Closing Appliances ...	---	---	---	---	---	---	---	---
Deckhouses XXXXXX	6	6	75 x 55 x 7 T with 75x55x7 Str.	1200 & int. 1/2 HT.	Bktd. top Front 1330x640 welded btm. End 1610x950	610	230	2300

Particulars of Closing Appliances (state if capable of being manipulated from both sides).

Poop Bulkhead ...	---
Raised Quarter Deck Bulkhead ...	---
Bridge, After Bulkhead ...	---
Bridge, Forward Bulkhead ...	---
Forecastle Bulkhead (Semi-enclosed)	1 Hinged steel door operated both sides (Class II).
Exposed Machinery Casings on Freeboard or Raised Quarter Decks ...	2 openings closed by hinged steel door operated both sides (Class II).
Exposed Machinery Casings on Superstructure Decks ...	---
Machinery Casings within Superstructures not fitted with Class I Closing Appliances ...	---
Deckhouses XXXXXX	1 opening at front, closed by hinged steel door operated both sides. 1 opening at end, closed by hinged hardwood door (2" thick) operated both sides.

PARTICULARS OF PROTECTION TO OPENINGS, ETC.

The following diagrams should be used to indicate the positions of cargo and coaling hatchways, gangway, cargo and coaling ports, side scuttles, scuppers, ventilators, companionways, etc., which would affect the seaworthiness of the ship :—



Particulars of fiddle, funnel and ventilator coverings, engine room skylight and other openings in machinery casing tops and their means of closing :—

(False funnel fitted) ✓

None.

Particulars of Flush Bunker Scuttles :—

None.

Particulars of Companionways :—

- (including those incorporated in deckhouses and masthouses)
1. Enclosed stairway to crews accom. from within enclosed f'le, hinged steel W.T. door secured both sides, 1325x630 with 620 sill. ✓
 2. Emergency exit within enclosed f'le from crew's accom, hinged steel W.T. door secured both sides, 1050x500 with 900 sill. ✓
 3. Entrance to provision store of strong W.T. construction within semi-enclosed f'le, hinged steel W.T. door secured both sides, 1325x780 with 620 sill. ✓
 4. Emergency exit within semi-enclosed f'le, of strong W.T. construction, ^{When Bridge} hinged steel W.T. door secured both sides, 1320x605 with 620 sill. ✓
 5. Entrance to main engine room of strong W.T. construction within semi-enclosed f'le, ^{When Bridge} hinged steel W.T. door secured both sides, 1315x600 with 630 sill. ✓
 6. Open stairway to tw.dks. from within strongly constructed deck house, (guard rails fitted) - No sill. ✓
- Particulars of Ventilators in exposed positions on freeboard and superstructure decks:-

Freeboard deck:-
2-250x200 (built) x 7 mm. thick x 1500 mm. high (supported) to Aux. E.R. Closed by hinged cover plate secured by wing bolts.
2 - 3" Dia. G.N. x 960 mm. high to steering gear space.
Long fore deck.

Long fore deck:-
1 - 3" Dia. G.N. x 960 mm. high to steering gear space.
3 - (protected with plate) G.N. vents closed by wood plug attached with chain. ✓

1 - (protected within Dk.hse) to accom. below freeboard deck. Size of openings in Dk.Hse side 250x100, sill 700 mm.

2 - 10" dia. x 8 mm. thick x 3500 mm. high (supported) to E.R. side 300x200, sill 600 mm.

Particulars of Air Pipes in exposed positions on freeboard, raised quarter, or superstructure decks:—

Freeboard Deck:-
2 - 3" Dia. x 960 mm. high to No.4 Wing Tk. (p&s)
2 - 3" " " " " " " " After Ballast Tank.
1 - 3" " " " " " " " No.4 D/B Tank.
Long Ecc. Deck

Long Fe'le Deck:-

2 - 3"	Dia.	x 960/mm.	high to Fore Peak Tank.
1 - 3"	"	"	" " No.1 D/B Tank.
2 - 3"	"	"	" " No.2 " "
2 - 3"	"	"	" " No.1 Wing Tank (p&s)
2 - 3"	"	"	" " No.2 " "
2 - 3"	"	"	" " No.3 D/B Tank.
2 - 3"	"	"	" " No.3 Wing Tank (p&s).

Air pipes from water tanks fitted with wood plugs attached with chain. ✓

Air pipes from oil tanks and adjacent C/D^s fitted with wire gauzes and canvas covers. ✓

Air pipes (10 in number) situated in way of Dk.Hse side fitted with patent ball float closing appliance at open mouth. ✓

Openings
closed by
screwed
mushroom
type cover
operated
from inside
of Dk. Hse

Particulars of Gangway Cargo and Coaling Ports :—

Bulwark Car Door (see sketch)

Bulwark Passenger Door (see sketch)

Particulars of Scuppers and Sanitary Discharge Pipes :—

Saloon space on Fc'le Deck drained by means of scuppers led to freeboard deck (2p, 2s - 1½"). ✓
Freeboard deck drained by means of 6 ✓ 3" pipes ()

Freeboard deck drained by means of 6 1/2" pipe scuppers (p&s) & 2 - 6" scuppers (p&s).
For'd space and chain locker drained by 1" pipe scuppers (p&s).

For'd space and chain locker drained by means of hand pumps led overboard with automatic non return valves at shell and at handpump. ✓

Steering gear space drained by means of a hand pump on deck.

Sanitary and wash basin discharges above freeboard deck led overboard approx. 700 mm. below freeboard deck with automatic screw down non return valve at outboard end and trapped scuppers at inboard end. ✓

Wash Basin discharges below freeboard deck led overboard approx. 700 below freeboard deck with 2 automatic non return valves at shell and trapped scuppers at inboard end. ✓

Particulars of Side Scuttles and Deadlights :—

Deckhouse on fore deck:-

5 - Non - openings windows 600x600x 10 mm thick toughened glass at front with Aluminium Alloy frames. Shutters provided for all windows.

9 - Non-opening (p&s) windows, 900x650x10 mm. " " " " " " " " " " " "

Above freeboard deck:-
11 (ps) & 10 (ss) - 12" dia. non-opening side lights with brass frames and deadlights.
Below freeboard deck:-

Below freeboard deck:-
3 (ps) & 2 (ss) - 12" dia. non-opening side lights with brass frames and deadlights. ✓

Alloy frames ✓
wood frames ✓
" " ✓

Shutters provided for all windows.
Shutters provided for 50% of number of windows. ✓

Strongly constructed with glass of adequate thickness

Vertical distance of Sill of lowest Side Scuttle above top of keel Approx. 1 metre above L.W.L. (50 mm. above Main Dk. & trunked to below decks).
Distance from amidships to centre of lowest Side Scuttle 9.8 metres.

Particulars of Guard Rails and Bulwarks :—

Fc'le Deck:-

Short strong steel bulwark 2 1/2 M. from stem (8 mm. & 11 mm. thick & 1 to 1.2 M. high). Remainder 3 1/4 rail guard rails with stanchions spaced 1200 mm.

Promenade deck:- Rail guard rails with stanchions spaced 1200 mm. apart. ✓ 1.1 m. high

Freeboard deck (aft end) with stanchions spaced 1200 mm. apart. 1.1 m. high.

Steel bulwark 1700 mm. high & 7-8 mm. thick, strong 3" dia. pipe rail bar, 8 mm. plate stays fld. 50 mm, 75x55x7 Ang. stays spaced 1800 mm.

Life lines capable of being rigged fore and aft, with tightening screw. ✓

Particulars of Freeing Arrangements.

Well		Height of Bulwark	Size of Freeing Ports	Number each side	Area each side	Rule area each side
Length of	xxxx					
After Well	29.5 M.	1700 mm. (11.0M)	500 x 350 mm. ✓	12 ✓	2.1 M ²	As 1.0 M² approved
Forward Well		Enclosed (18.5 M)				

(See Deck Scuppers above.)

State position of each freeing port { After Well :—
(F. and A. position and height above deck edge) { Forward Well :— } Fr. 2-3 and then every 3rd fr. sp. between frs. 11-42 (incl.)

State whether the freeing ports are fitted with shutters, bars, or rails, and give particulars of such :— One rail in each port. ✓
Steel shutters hinged at top opening outboard

Additional area where sheer is less than standard. 0.3 m²

PARTICULARS OF PROTECTION TO OPENINGS, ETC.

HATCHWAYS ON FREEBOARD AND SUPERSTRUCTURE DECKS.										
			"A"	"B"	"C"	"D"	"E"	"F"	"G"	"H"
Description of Hatchway			4 to Eng. Room	To aux. Eng. Room	To aux. Eng. Room	To steer. gear	To steer. gear	To for d stores	To chain locker	From prov. store
Dimensions of Hatchway mm.			2285x990	600x580	550x450	800x580	1100x600	600x600	580x580	700x700
COAMINGS	{	Height above Deck		610		610		610	610	610
		Thickness { Sides	None	8	None	8	None	8	8	8
		Stiffeners ... { Ends								
		Brackets, Stays { Sides ... { Ends								
			(Flush)		(Flush)		(Flush)			
HATCH BEAMS	{	Number	Ord. deck							
		Spacing	beams							
		Scantling and Sketch	cut and strapped in way of openings							
		Bearing Surface								
FORE AND AFTERS	{	Number								
		Spacing								
		Unsupported Lengths								
		Scantling* and Sketch								
HATCH COVERS	{	Material	Steel	Steel	Steel	Steel	Steel	Steel	Steel	None
		Thickness	10mm. thick	8mm. thick	10mm. thick	8mm. thick	10mm. thick	8mm. thick	8mm. thick	(Service lift)
		How fitted	bolted W.T. hinged	W.T. bolted W.T. hinged	W.T. bolted W.T. hinged	W.T. hinged W.T. bolted	W.T. bolted W.T. hinged	W.T. hinged W.T. bolted	W.T. hinged W.T. bolted	
		Bearing Surface	with 5/8" bolts spaced 65mm	secured from under deck bolts	with 5/8" bolts spaced 65mm	secured by 5 toggles	with 5/8" bolts spaced 65mm	secured by 5 toggles	secured by 5 toggles	
Spacing of Cleats			115	central screw and wheel (emergency hatch)	100	100				
Number of Tarpaulins										
<p>*Are wood fore and afters steel shod at all bearing surfaces?</p> <p>Are battens and wedges efficient and in good condition?</p> <p>Are tarpaulins in good condition and in accordance with rule requirements?</p> <p>Are lashings provided in accordance with rule requirements?</p> <p>Are wood covers fitted with galvanised end bands?</p>										
<p>Note:- Hatches "A", "C" & "E", work hatches only, opened for removal of machy parts.</p>										

*Are wood fore and afters steel shod at all bearing surfaces?
 Are battens and wedges efficient and in good condition?
 Are tarpaulins in good condition and in accordance with rule requirements?
 Are lashings provided in accordance with rule requirements?
 Are wood covers fitted with galvanised end bands?

Note:- Hatches "A", "C" & "E", work hatches only, opened for removal of machy parts.

Particulars of any special features:— (Timber Deck-cargo Fittings, Skylights, Sewage Systems, Ash Ejectors, Rubbish Shoots, etc.)

W.T. doors on bulkheads between E.R. and Aux. E.R. also E.R. and Pump Room, controlled from above freeboard deck.

