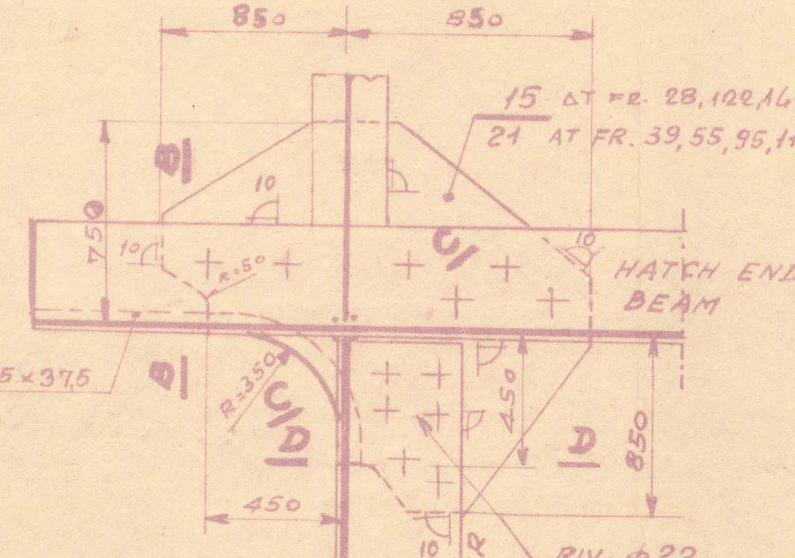
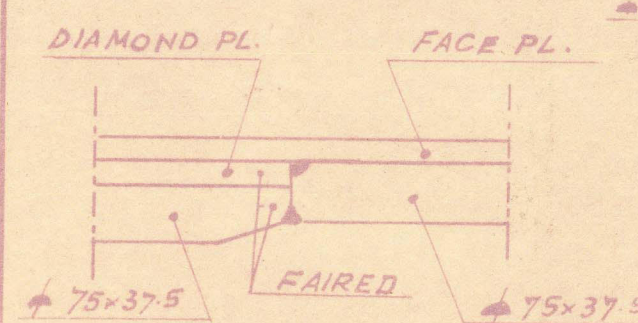


DET. 1

1:25

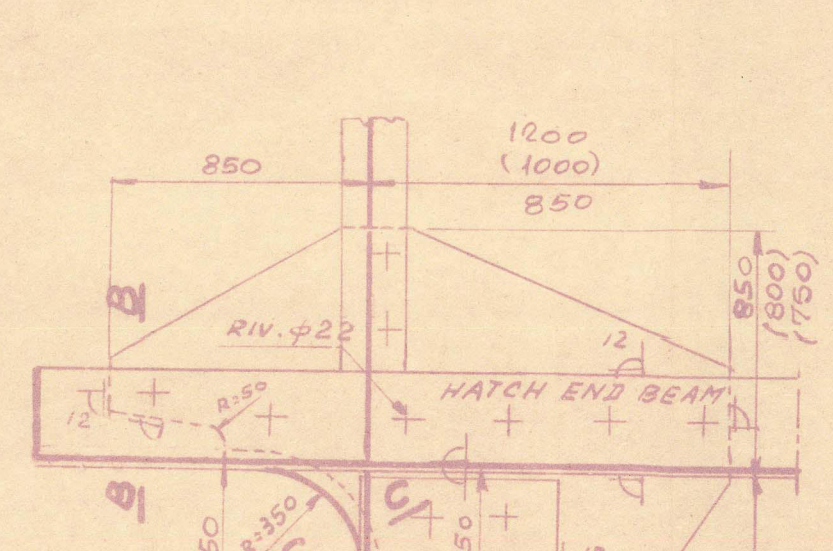


VIEW A



DET. 2

1:25



SECT. B-B

1:5



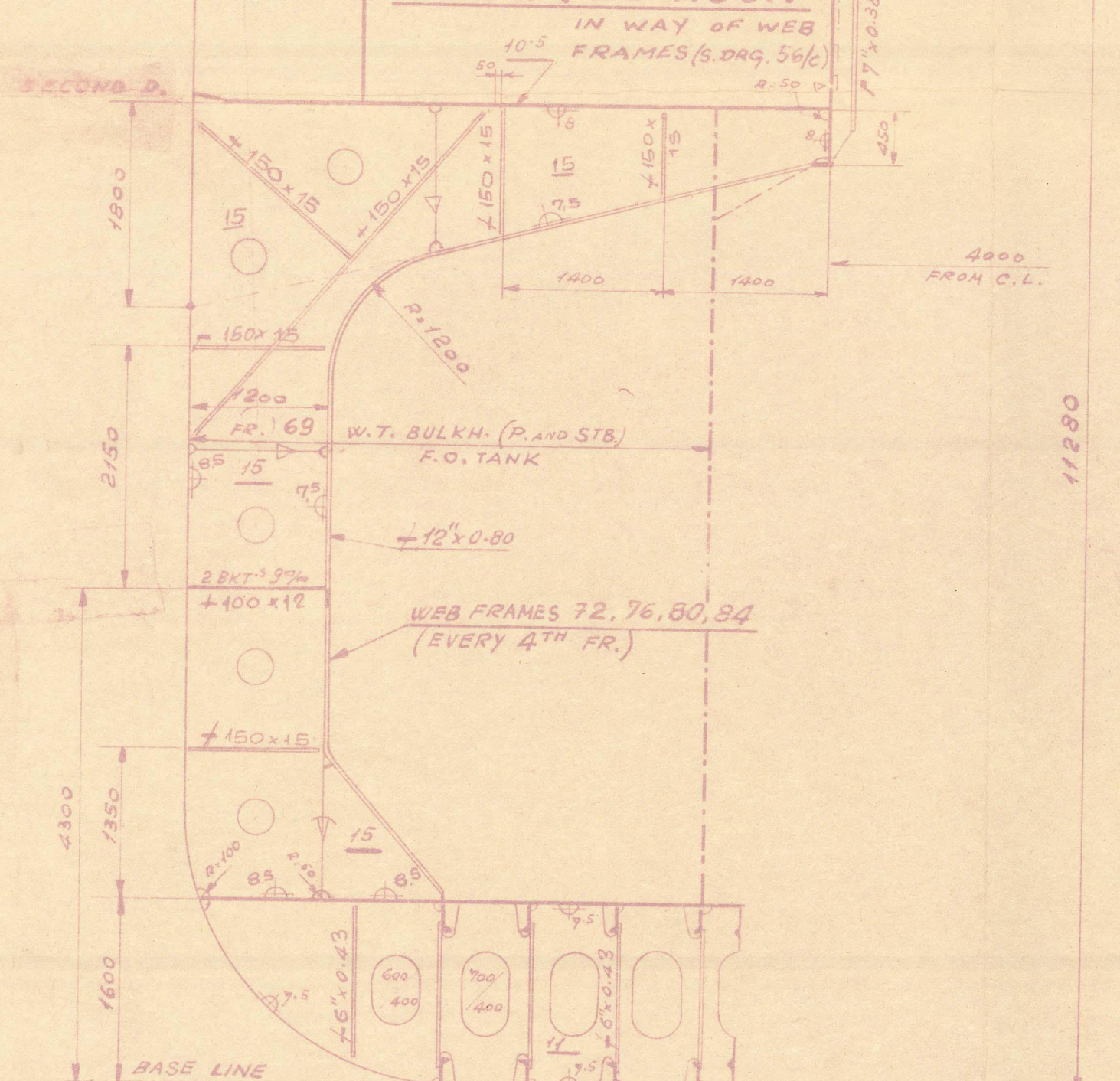
SECT. C-C

1:5



SECT. D-D

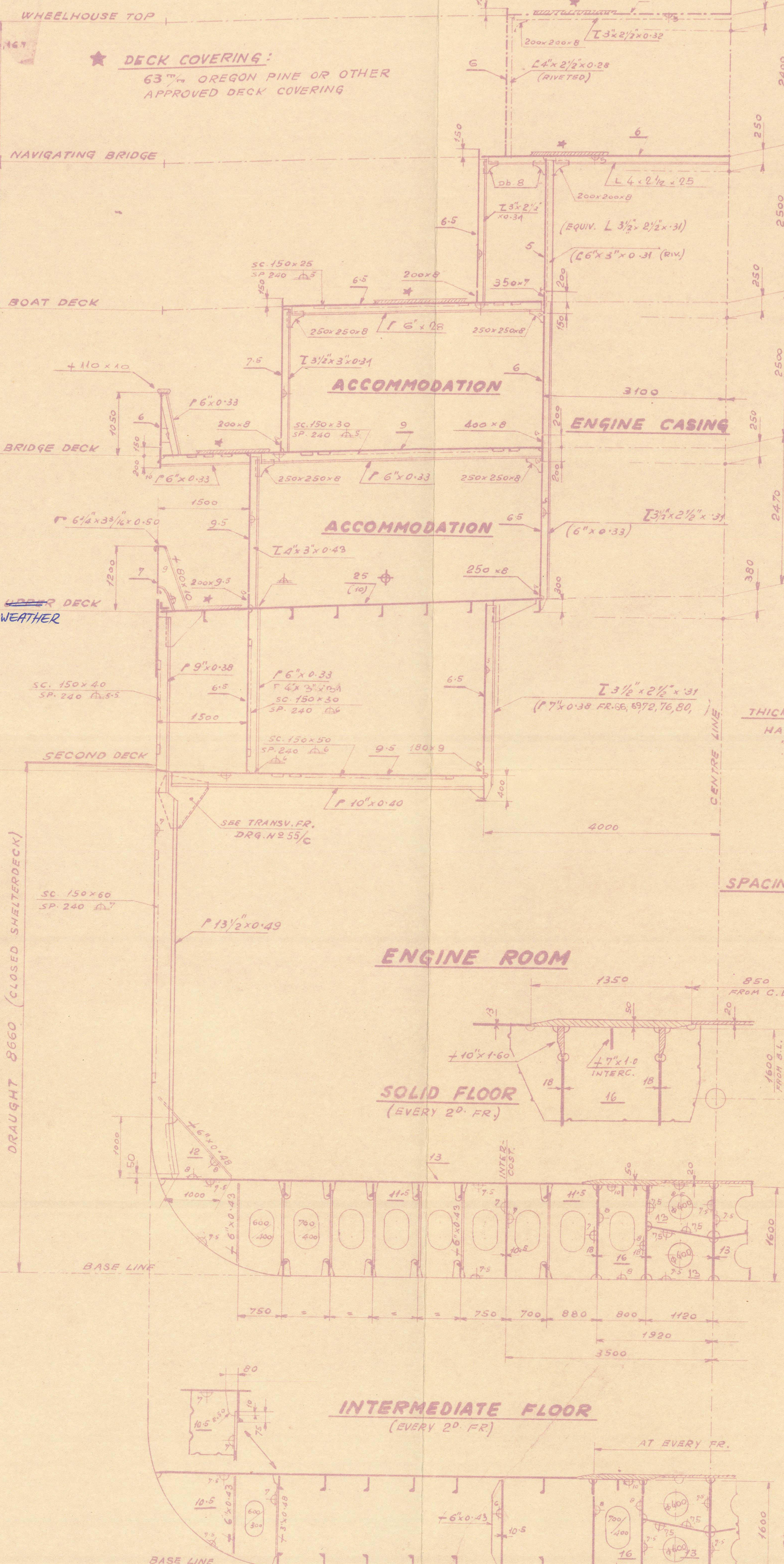
1:5

WEB FRAME
IN ENGINE ROOM

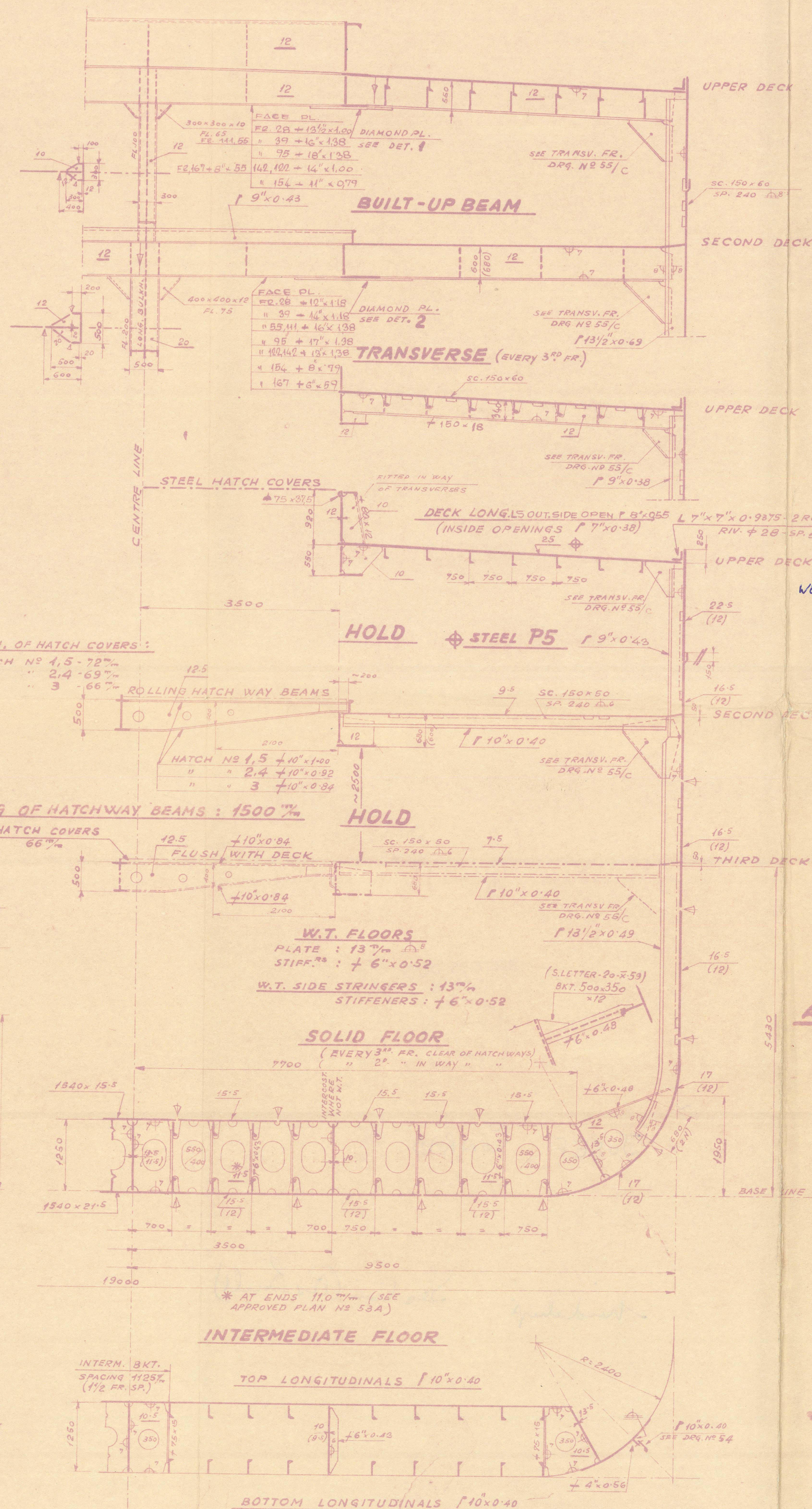
REFERENCES:

LONGITUDINAL SECTION	DRG. N° 52/c
DOUBLE BOTTOM	" 53/c
SHELL PLATING	" 54/c
TRANSVERSE FRAMES	" 55/c
DECK	" 56/c
TRANSV. BULKHEADS	" 57/c
FORE BODY	" 58/c
AFTER BODY	" 59/c
STERNPOST	" 60/c
RUDDER	" 61/c
OIL FUEL & FRESH WATER TANKS	" 62/c
TUNNEL & AFTER TANKS	" 63/c
SOLE PIECE	" 64/c

SEE ALSO DRG. N° 65
ALTERATIONS TO
CLASS. PLANS



HATCH END BEAMS



MAIN CHARACTERISTICS

LENGTH OVERALL	148.45 m
LENGTH B.P. (AS CLOSED SH.D.)	135.425 m
BREADTH MOULDED	19.00 m
DEPTH TO WEATHER DECK	11.28 m
DEPTH TO SECOND DECK	8.53 m
ENGINE OUTPUT	7900 B.H.P.

AS "OPEN SHELTER DECKER"

DRAUGHT	7.62 m
DEADWEIGHT ALL TOLD	8500 LONG TONS
LOADED TRIAL SPEED	17 KNOTS

AS "CLOSED SHELTER DECKER"

DRAUGHT	8.66 m
DEADWEIGHT ALL TOLD	10350 LONG TONS
LOADED TRIAL SPEED	16.6 KNOTS

CLASS: LLOYD REGISTER **100 A1**
WITH THE NOTATION "LONGIT. FRAMING AT BOTTOM AND WEATHER DECK"
SUITABLE FOR HEAVY CARGO
(SHELTERDECK) STRENGTHENED FOR CARGO 2T/m² -
PROPELLER, TAILSHAFT, RUDDER STOCK AND RUDDER
TO SUIT CLASS "STRENGTHENED FOR NAVIGATION IN ICE"
CLASS 3"

EQUIPMENT

EQUIPMENT NUMBER 4268 (LETTER C +)

3 BOWER ANCHORS OF 3730 KG. EACH
550 m STUD LINK CHAIN CABLE 62.7 mm + OR 54.7 mm + SPEC. STEEL
1 TOWLINE 220 m. MINIMUM BREAKING STRENGTH 75150 KG.
4 MOORING ROPES. EACH 200 m MINIMUM BREAKING
STRENGTH 21165 KG.

FRAME SPACING

FR. 0 - FR. 10	610 mm
" 10 - " 145	750 mm
" 145 - " 173	685 mm
" 173 - FORE	610 mm

ALL SECTIONS ARE BRITISH SECTIONS

ORDONANCE & DESIGN	
DECEMBER 1959	
GLAYNO REBO	03111
150	

APPROVED BY LLOYD'S REGISTER
15-12-1959
(CORRECTIONS EMBODIED)

8500/10350-TON CARGO MOTOR SHIPS
RIJEKA-YARD N° 480/==

M/S "JOZEF COHRAD"

MAIERFORM S.A. GENEVE

SCALE:	VII-1959 W.S.
1:50	PROJECT N° 2608
0.40 mm	DRG. N° 20215/c

011823-011825-0001

RECORDS DEPT.
LONDON.

2

JOSEF CONRAD ★

Midship

Section (As Built)



© 2021

Lloyd's Register
Foundation

011823-011825-0001