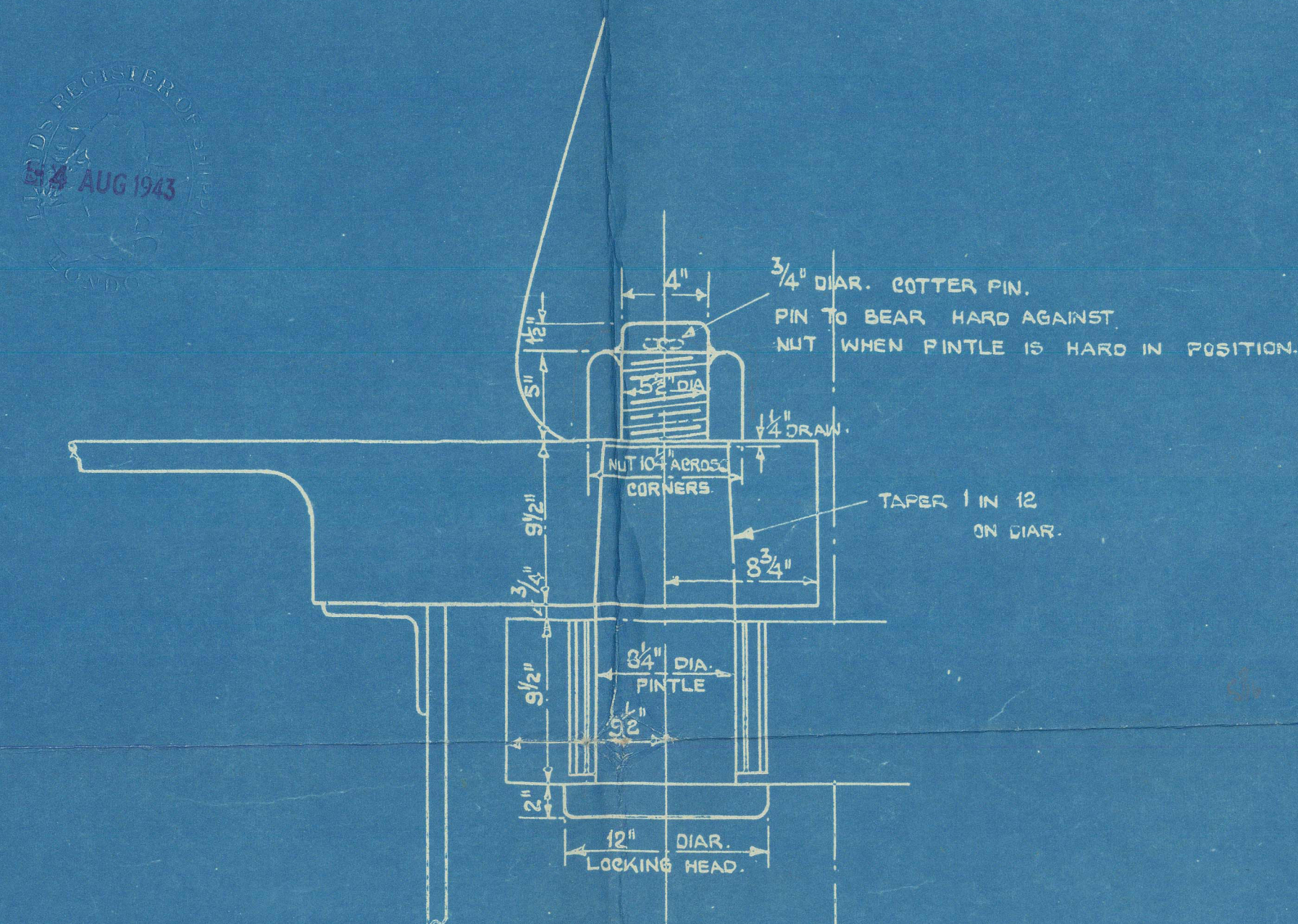


# P.F.(C) TYPE VESSEL.

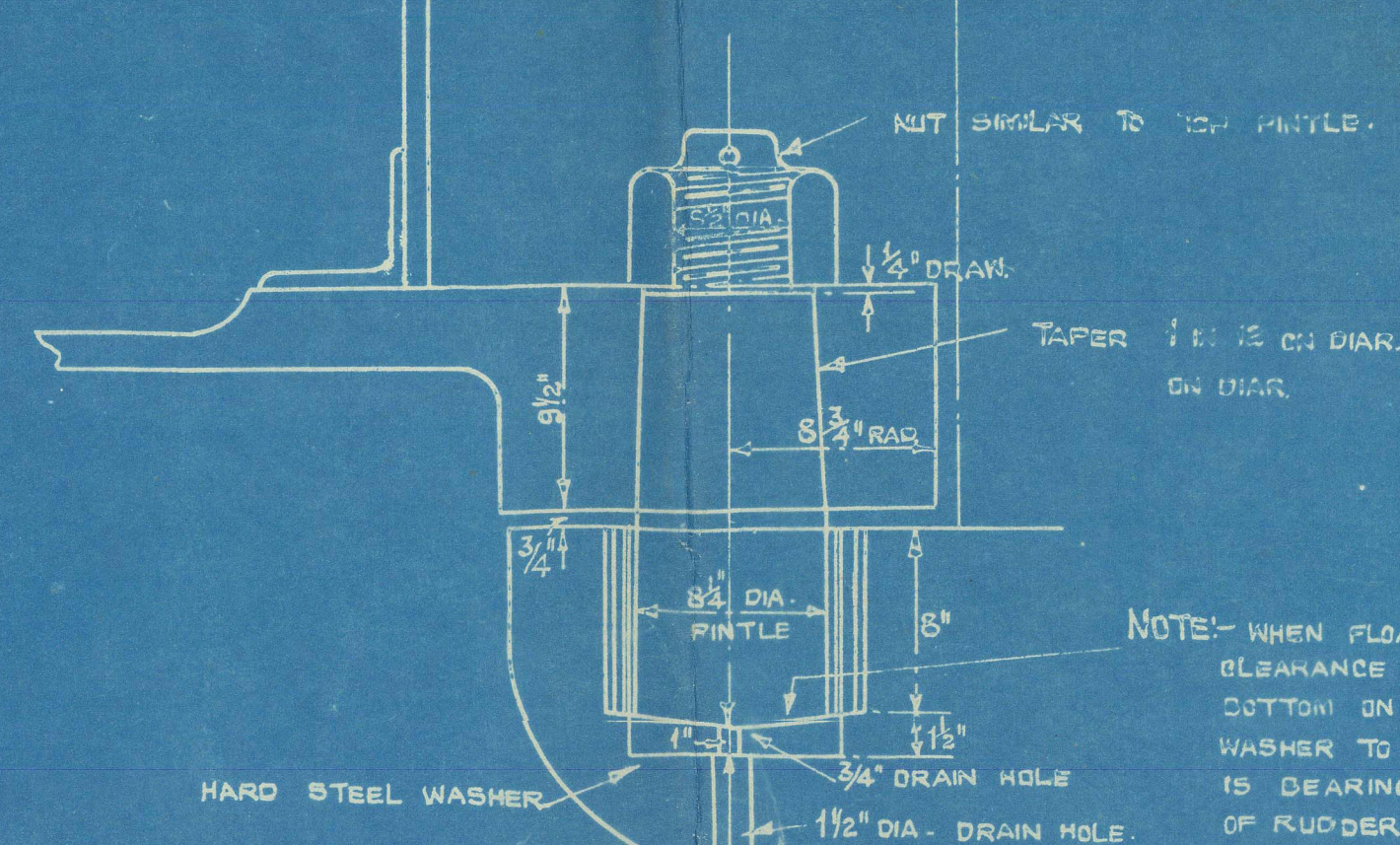
## RUDDER PLAN.

SCALE:  $\frac{3}{4}" = 1 \text{ FOOT}$



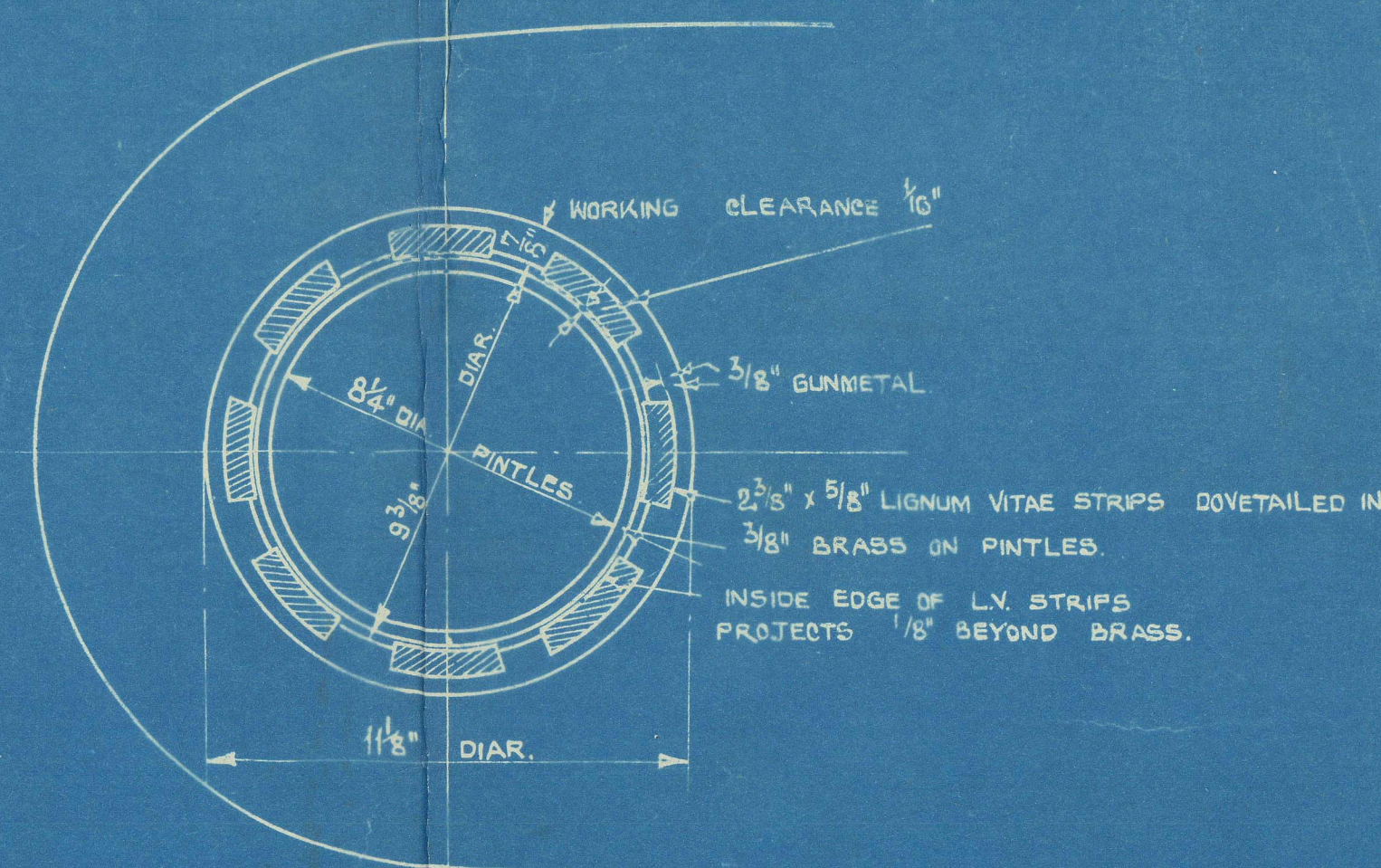
DETAIL OF TOP GUDGEON & PINTLE.  
SCALE:  $\frac{1}{2}" = 1 \text{ FOOT}$

NOTE: PINTLES TO BE OF STEEL EFFICIENTLY  
"FITTED" AS SHOWN. BRASS BUSHES MUST  
BE TURNED IN ONE PIECE & PROPERLY SHRUNK ON.



DETAIL OF BOTTOM GUDGEON & PINTLE  
SCALE:  $\frac{1}{2}" = 1 \text{ FOOT}$

NOTE: WHEN FLOATING RUDDER SLIGHT  
CLEARANCE TO BE LEFT BETWEEN  
BOTTOM ON BOTTOM PINTLE & STEEL  
WASHER TO ENSURE THAT CARRIER  
IS BEARING ENTIRE WEIGHT  
OF RUDDER.



PLAN OF GUDGEONS.  
SCALE:  $3" = 1 \text{ FOOT}$

### RUDDER:

TO LLOYD'S REQUIREMENTS.

LOAD DRAFT 26'-9", SHIPS SPEED 11 KNOTS.

AREA OF RUDDER (TO 1/2 OF PINTLES) = A = 146 SQ. FT.

C.G. OF AREA ABAFT 1/2 OF PINTLES = D = 3.96 FT.

$A \times D = 578$ .

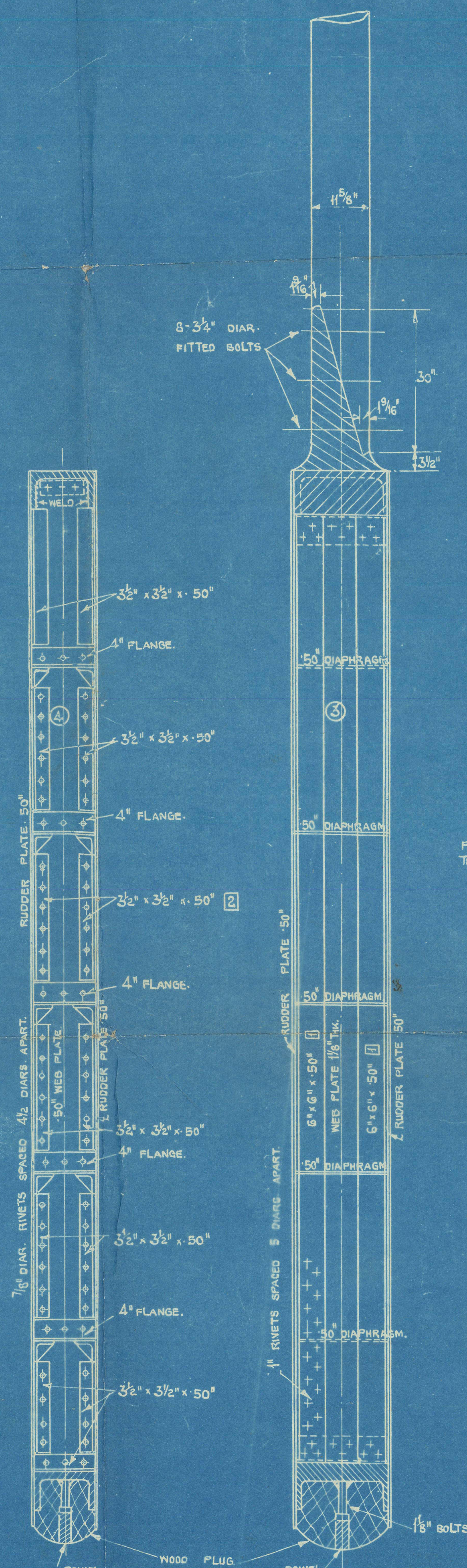
DIAM. OF RUDDER STOCK = 11" + 10% OF SECTIONAL AREA = 11 5/8".

RUDDER STOCK OF BEST FORGED STEEL.

RUDDER CASTINGS OF STEEL.

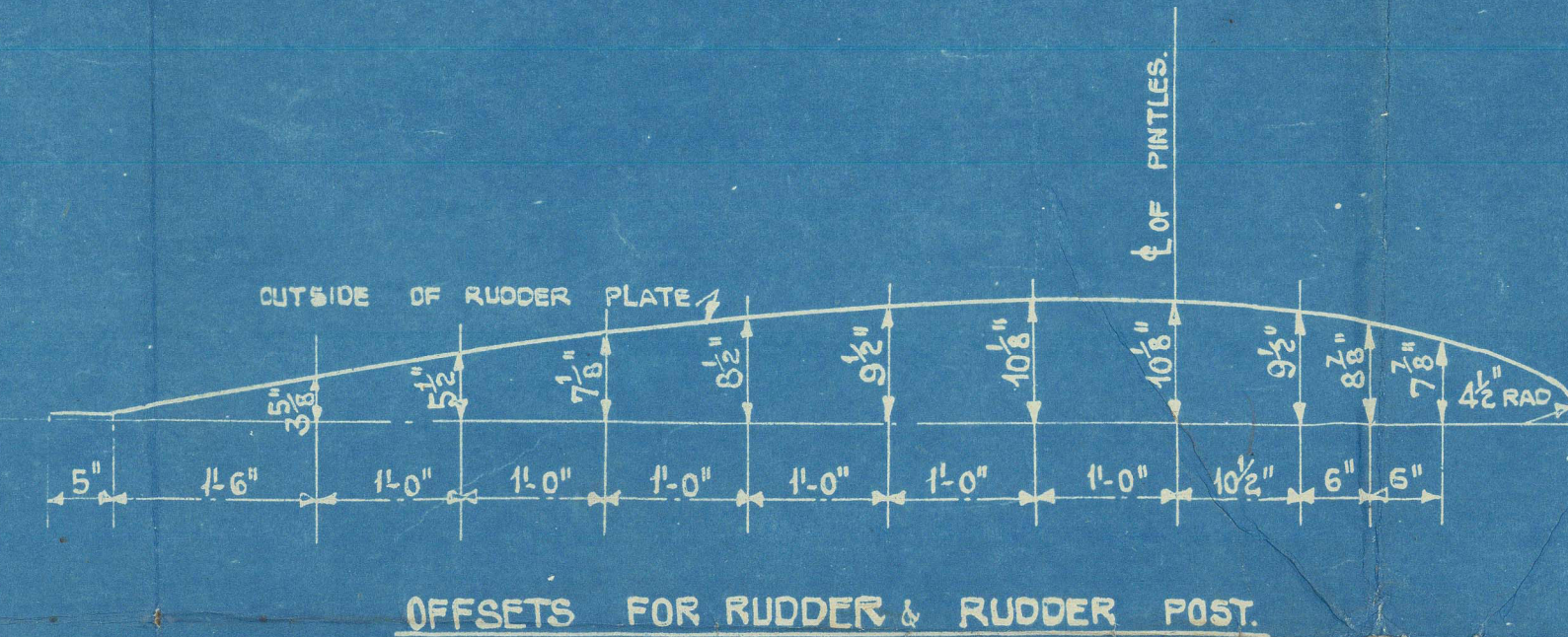
RUDDER & RUDDER POST TO BE TESTED

WITH BITUMINOUS SOLUTION.



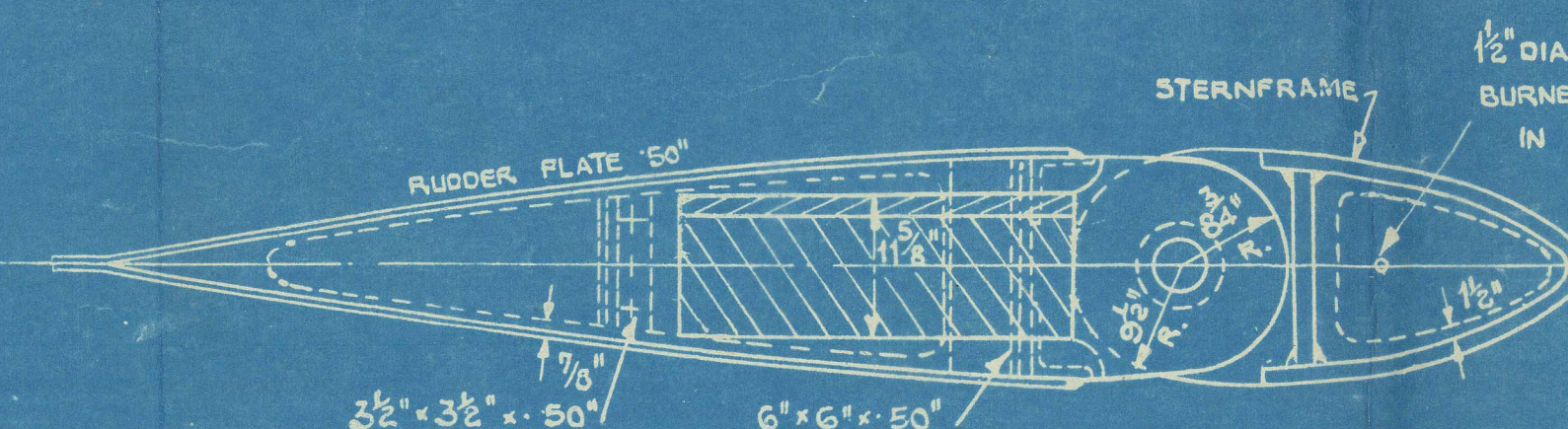
SECTION AT AFTER WEB.  
LOOKING AFT.

SECTION AT FORD WEB.  
LOOKING AFT.

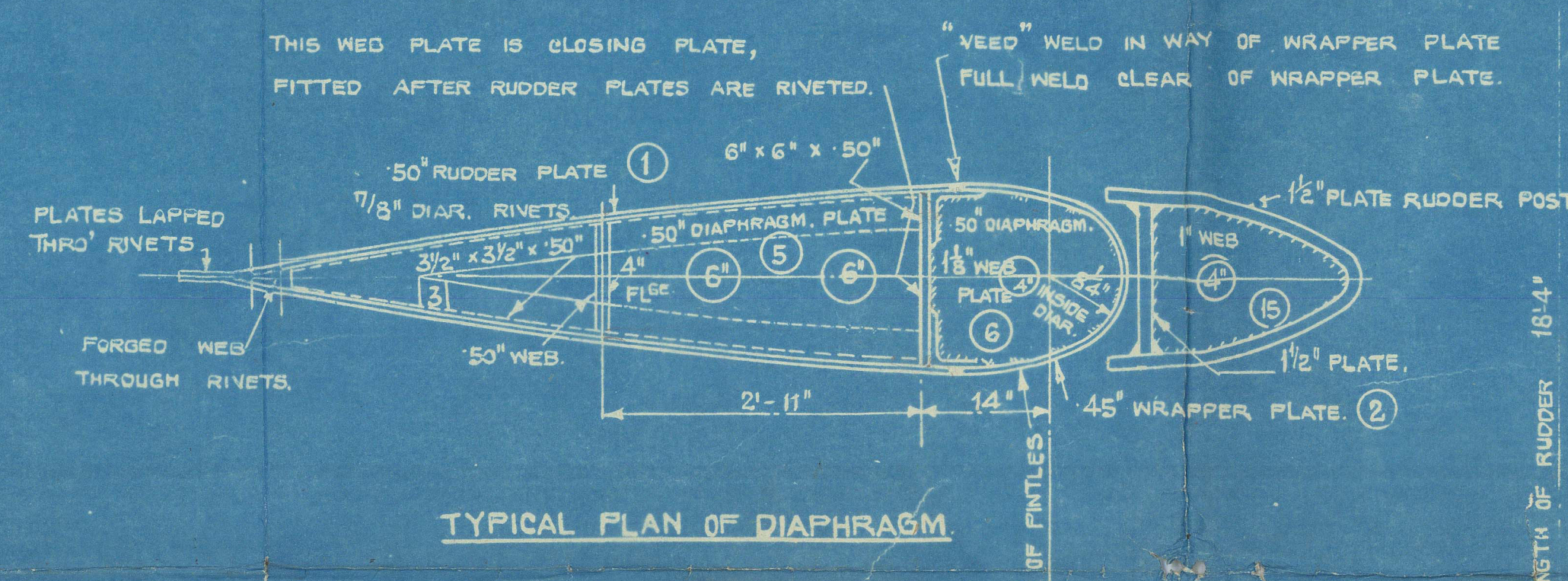


OFFSETS FOR RUDDER & RUDDER POST.

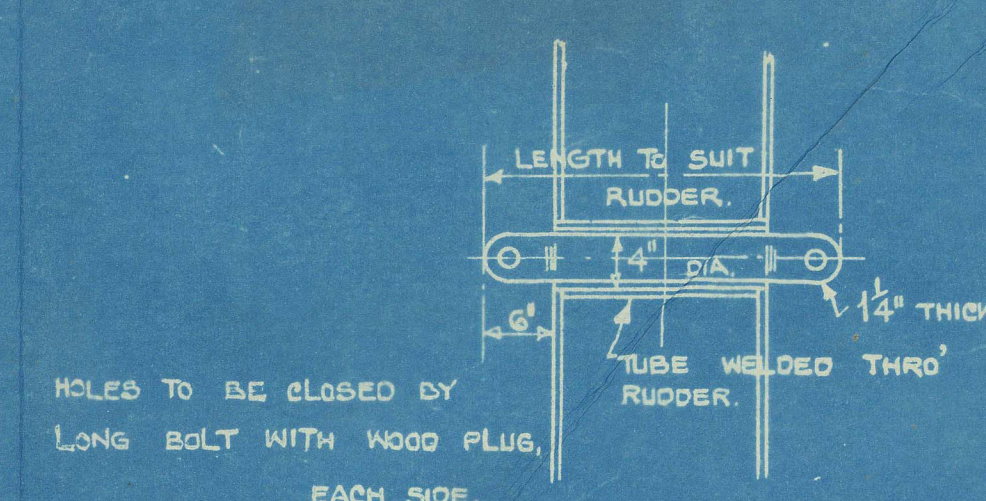
NOTE: LEVEL LINE SCREENED ON TOP  
AND BOTTOM CASTINGS BY MAKERS.



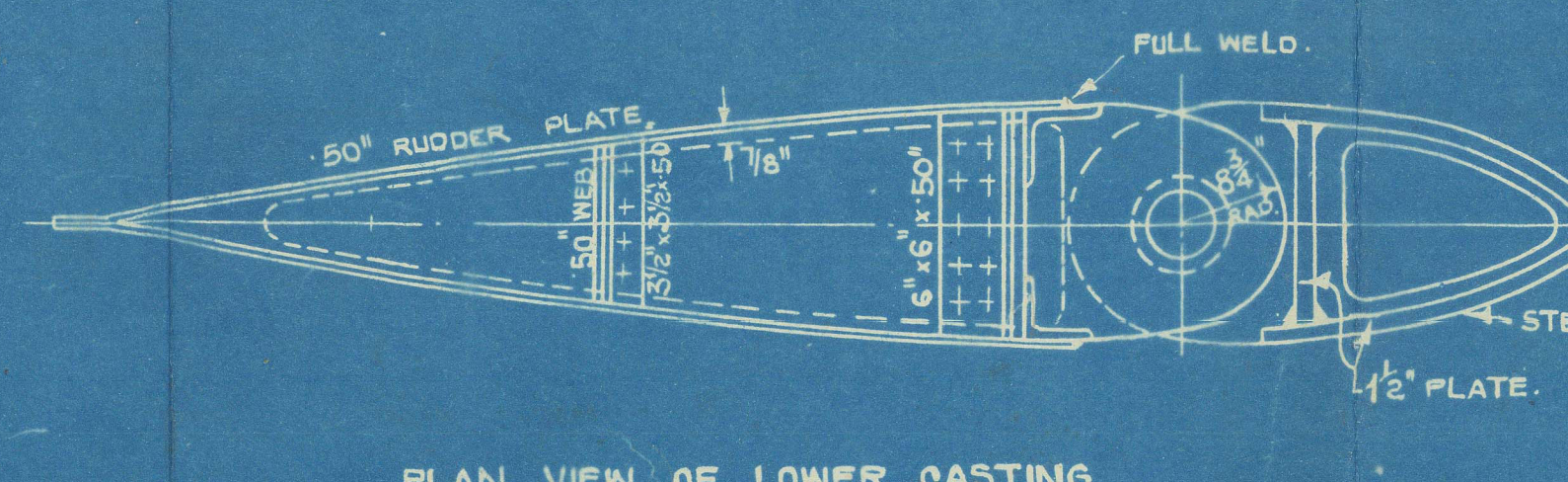
PLAN VIEW OF TOP CASTING.



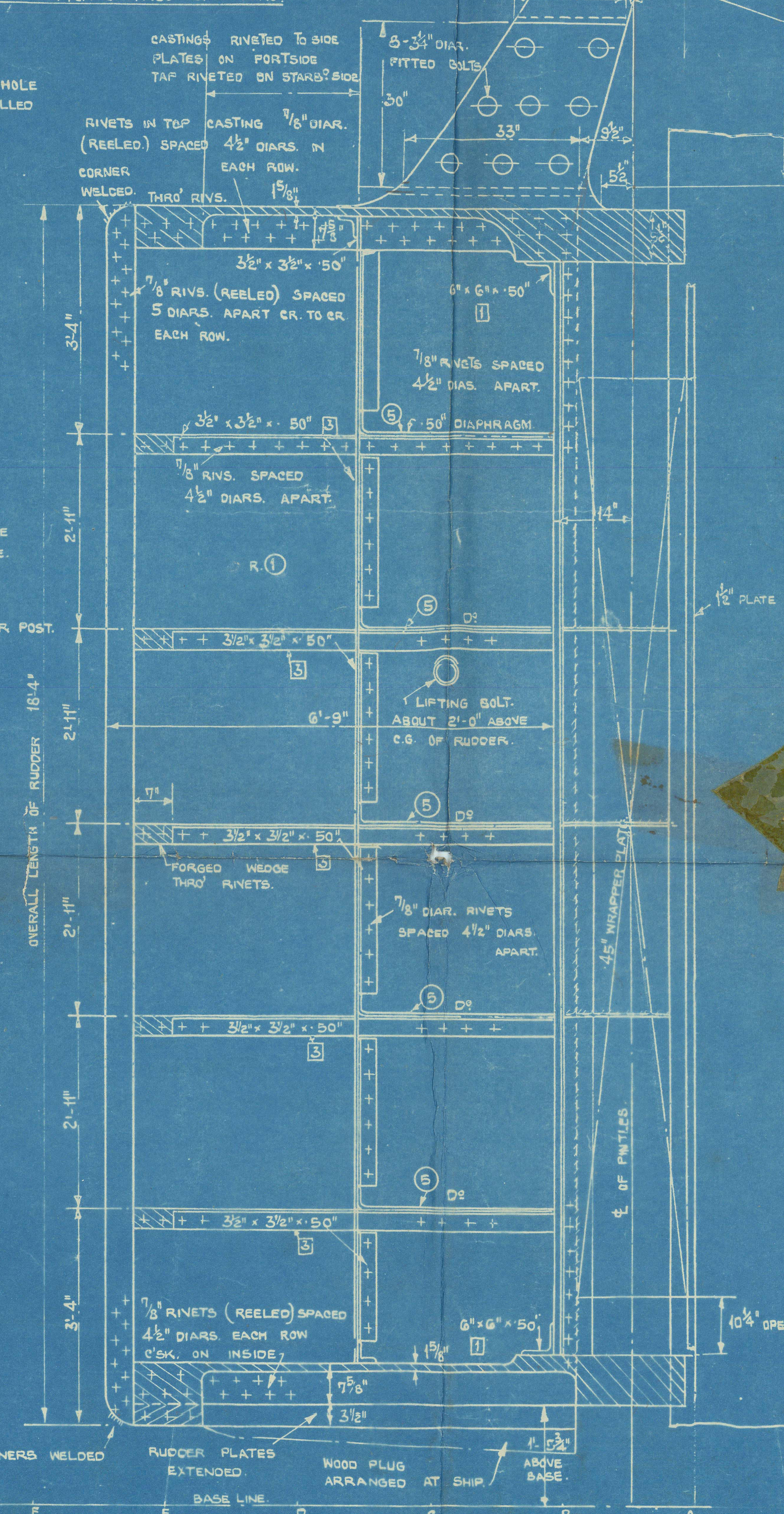
TYPICAL PLAN OF DIAPHRAGM.



DETAIL OF RUDDER LIFTING BOLT.



PLAN VIEW OF LOWER CASTING.



C" TYPE SHIP.  
STAD HAARLEM<sup>7</sup>

Short Brathers, Ltd.

Yard nos. 482-3-4-5-6

Rudder.

EMPIRE NAIR OBI

SUNDERLAND RPT. NO. 34186.

*Lochybank*  
EMPIRE DOMINICA

\*EMPIRE HONDURAS - N.V. "LOCHYBANK"  
SUNDERLAND RPT NO. 34325.

(Kingshoe)



© 2021

Lloyd's Register  
Foundation

011803-011825-0132