

Lloyd's Register of Shipping.

Index No. 37123
(For London Office only).

JAN 1943

SURVEYS FOR FREEBOARD.

(CONDITIONS OF ASSIGNMENT.)

ARMATHIA

Ship's Name

EMPIRE COURAGE CERAM

Port of Survey

GLASGOW.

Official Number

1561

Surveyor's Signature

R. Dumbuis

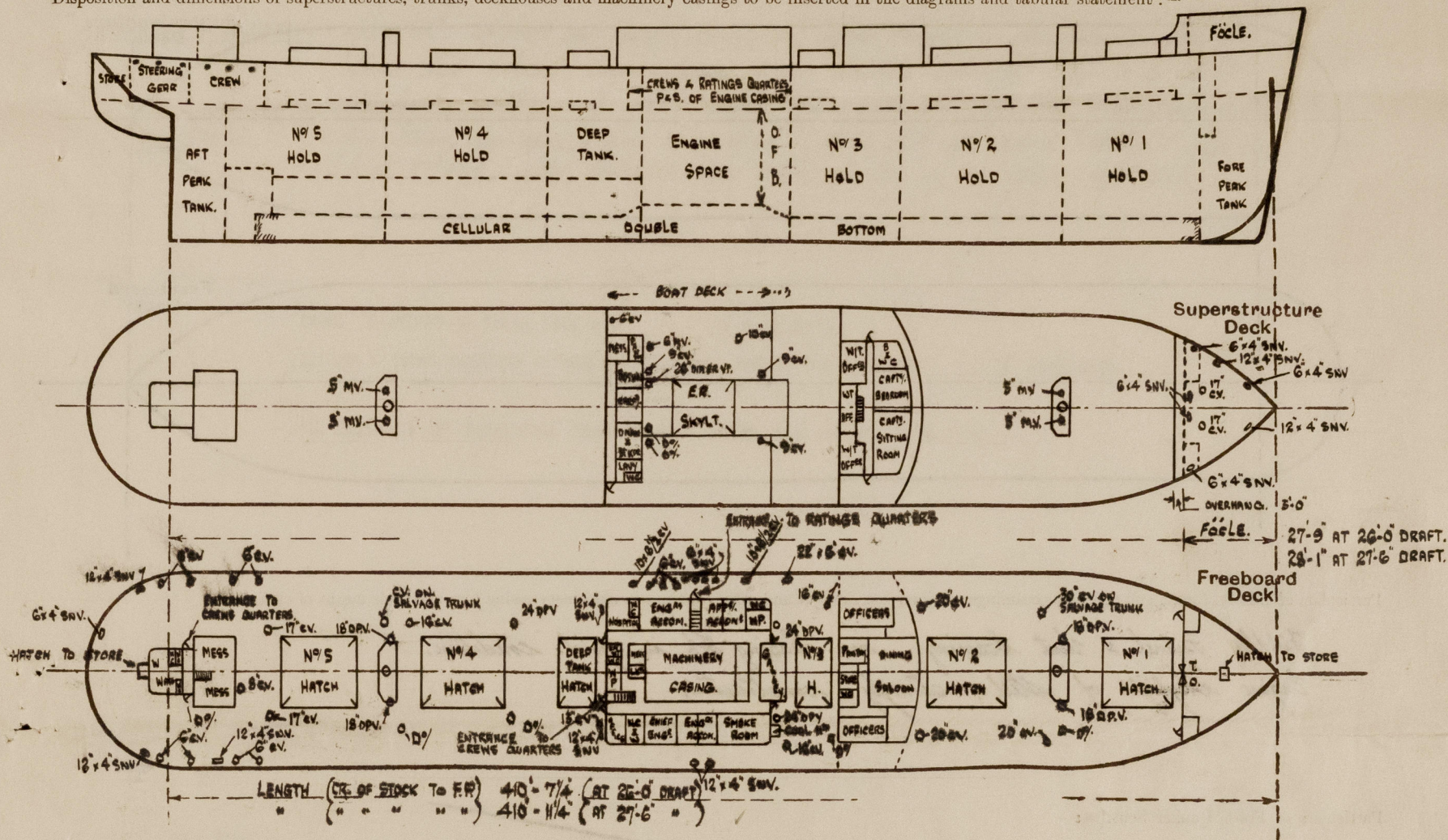
Nationality and Port of Registry

*DUTCH AMSTERDAM**BRITISH GLASGOW*

Date of Survey

WHILE BUILDING.

Disposition and dimensions of superstructures, trunks, deckhouses and machinery casings to be inserted in the diagrams and tabular statement:—



Particulars of Superstructures, Trunks, Casings, Deckhouses.

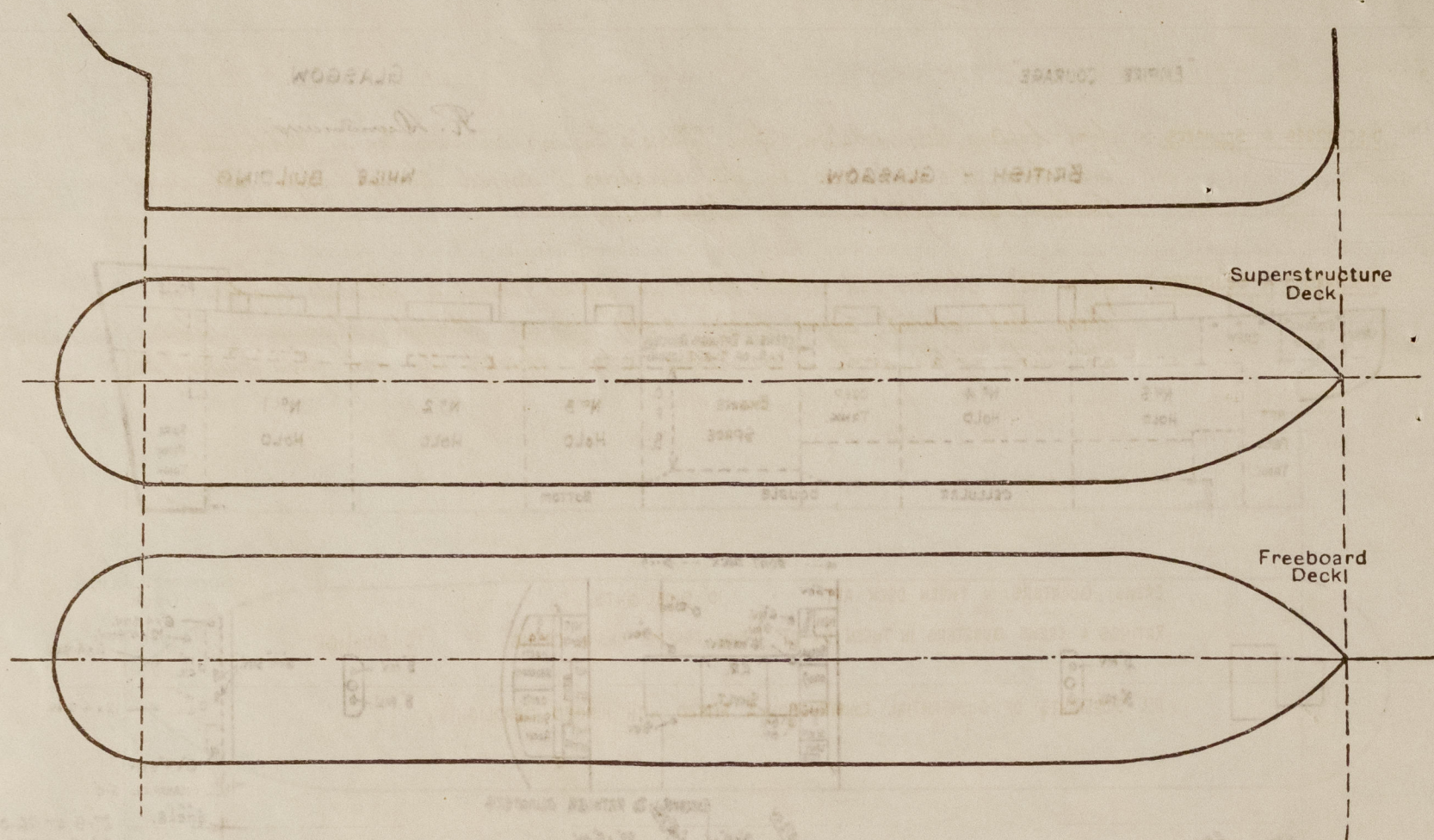
	Coaming	Plating	Stiffeners	Spacing	End Attachments of Stiffeners	Size of Openings	Height of Sills	Height of Casings
Poop Bulkhead ...								
Raised Quarter Deck Bulkhead ...								
Bridge, After Bulkhead ...								
Bridge, Forward Bulkhead ...								
Forecastle Bulkhead ...		30' PLATING	ANG. 3 1/2" x 3" x 31'	30'	NONE	5' 1" x 4' 3" (P&S) 5' 6" x 2' 6"	18'	7' 6"
Trunk, Aft ...								
Trunk, Forward ...								
Exposed Machinery Casings on Freeboard or Raised Quarter Decks ...								
Exposed Machinery Casings on Superstructure Decks ...								
Machinery Casings within Superstructures not fitted with Class I Closing Appliances ...								
Deckhouses on Flush Deck Ships ...								

Particulars of Closing Appliances (state if capable of being manipulated from both sides).

Poop Bulkhead ...	
Raised Quarter Deck Bulkhead ...	
Bridge, After Bulkhead ...	
Bridge, Forward Bulkhead ...	
Forecastle Bulkhead ...	Centre line opening - 3 1/4" shifting boards full height, fitted in channels welded to bulkhead. Openings (P&S) Hinged steel doors, operated from both sides
Exposed Machinery Casings on Freeboard or Raised Quarter Decks ...	
Exposed Machinery Casings on Superstructure Decks ...	
Machinery Casings within Superstructures not fitted with Class I Closing Appliances ...	
Deckhouses on Flush Deck Ships ...	

PARTICULARS OF PROTECTION TO OPENINGS, ETC.

The following diagrams should be used to indicate the positions of cargo and coaling hatchways, gangway, cargo and coaling ports, ventilators, companionways, etc., which would affect the seaworthiness of the ship:—



Particulars of fiddle, funnel and ventilator coamings, engine room skylight and other openings in machinery casing tops and their means of closing:—

Fiddle, Funnel & Vent Coamings on casing top in good condition. ✓
Engine Skylight of Steel, strongly constructed. ✓

Particulars of Flush Bunker Scuttles:—

NONE.

Particulars of Companionways:—

ENTRANCE TO CREWS QUARTERS (P+S) AT AFTER DECKHOUSE.
 OPENING 4'8" x 30"
 FITTED WITH HINGED TEAK DOOR,
 OPERATED FROM BOTH SIDES
 SILL 23" ✓

ENTRANCE TO RATINGS QUARTERS (P) IN MIDSHIP DECKHOUSE
 OPENING 4'8" x 33"
 FITTED WITH HINGED STEEL WT. DOOR,
 OPERATED FROM BOTH SIDES
 SILL 24" ✓

ENTRANCE TO CREWS QUARTERS (S) AT AFT END OF MIDSHIP HOUSE.
 OPENING 4'9" x 30"
 FITTED WITH HINGED STEEL WT. DOOR,
 OPERATED FROM BOTH SIDES.
 SILL 24" ✓

Particulars of Ventilators in exposed positions on freeboard and superstructure decks:—

FO'LE DECK: 2-17" GNV. COAMINGS 36" x 40" TO HOLD A TWEEN DECK, 2-12" x 4" G.N.V. (CAST) 36" HIGH, 5-6" x 4" G.N.V. (CAST) 36" HIGH. ✓
 UPPER DECK: 1-18" D.P.V. (P+S) AT FORE MASTHOUSE 11'6" HIGH x 40", SUPPORTED BY HOUSE. ✓ 1-30" CV (P+S) ABREAST FORE MAST COAMING 37" x 40". 1-20" CV (S) ABREAST FORE MAST, COAMING 36" x 40". ✓
 1-20" CV (P+S) AT FRONT OF SALOON HOUSE COAMING 11'6" x 40" STAYED AT BRIDGE. 1-16" CV (P+S) AT END OF SALOON HOUSE COAMING 11'6" x 40" STAYED AT BRIDGE. 1-24" D.P.V. (P+S) AT FRONT OF MIDSHIP DECKHOUSE 25'6" HIGH x 56" x 40" NOT STAYED. ✓ 1-16" CV (S) COAMING 34" x 36", 1-22'6" CV (P) COAMING 34" x 36", ABREAST GALLEY. ✓
 1-10'6" CV COAMING 36" x 32", 4-6'4" G.N.V. (CAST) 36" x 32" HIGH, 4-6" CV COAMINGS 36" x 30", 1-10'6" CV COAMING 36" x 32", IN PASSAGE ABREAST MIDSHIP DECKHOUSE P. SIDE. ✓
 2-12'4" G.N.V. (CAST) COAMING 34" HIGH IN PASSAGE ABREAST MIDSHIP DECKHOUSE S. SIDE, 1-12'4" G.N.V. (P+S) CAST 34" HIGH, 1-13" CV (S) COAMING 17'6" x 36" STAYED AT BORT DK. AT AFT END OF MIDSHIP DECKHOUSE. ✓
 1-24" D.P.V. (P+S) 25'6" HIGH x 56" x 40" BETWEEN DEEP TANK HATCH & N°4 HATCH NOT STAYED. ✓
 1-15" D.P.V. (P+S) AT AFT MAST HOUSE 11'6" HIGH x 40" SUPPORTED BY HOUSE. ✓ 1-30" CV (P+S) ABREAST AFT MAST HOUSE COAMING 35" x 40", 1-16" CV (P) ABREAST AFT MASTHOUSE COAMING 34" x 36". 1-17" CV (P+S) ABREAST AFT END N°5 HATCH COAMING 36" x 40". ✓
 3-3" D.P.V. (CAST) 36" HIGH TO DRYING ROOMS, 1-8" CV COAMING 36" x 30" TO TUNNEL, AT FORE END OF AFTER DECKHOUSE. ✓
 1-6'4" G.N.V. (P) CAST 36" HIGH, 4-6" CV (P) COAMING 36" x 30", 4-6" CV (S) COAMINGS 36" x 30", 1-12'4" G.N.V. (P) CAST COAMING 36" HIGH, 2-12'4" G.N.V. (S) COAMING 36" HIGH, IN GUTTER ABREAST AFT DECKHOUSE. ✓
 BORT DECK: 1-10" CV (P) COAMING 24" x 32", 2-9" CV (P+S) COAMINGS 24" x 25", 2-6" CV (S) COAMINGS 24" x 25", TO ACCOMMODATION IN MIDSHIP HOUSE. ✓

ALL VENTS TO RULE REQUIREMENTS & FITTED WITH WOOD PLUGS & CANVAS COVERS. ✓

Particulars of Air Pipes in exposed positions on freeboard, raised quarter, or superstructure decks:—

FO'LE DK: 1-4" MI TO FORE PEAK, 1-3" MI TO N°1 D.B. TANK. 18" HIGH ABOVE DECK. ✓
 UPPER DK: 1-5" MI (P+S) TO WING BALLAST TANK ABREAST FORE MAST, 1-3" MI (P+S) TO N°1 D.B. TANK ABREAST FORE MAST, 1-4" MI (P+S) TO N°2 D.B. TANK ABREAST FORE MAST. ✓
 1-4" MI (P+S) TO N°2 D.B. TANK & 1-4" MI (P+S) TO N°3 D.B. TANK ABREAST SALOON HOUSE. ✓
 1-5" MI (P+S) TO O.F. BUNKER, 1-4" MI (P+S) TO N°3 D.B. TANK, 1-3" MI (P) TO UPPER SETTLING TANK, 1-3" MI (P) TO LOWER SETTLING TANK, 1-2" MI (P) TO O.F. DRAIN TANK, 2-4" MI (P+S) TO N°4 D.B. TANK, 1-2" MI (P+S) TO COFFERDAM, 1-2" MI (P) TO LUB. OIL TANK, 2-2" MI (P+S) TO N°5 D.B. TANK. ✓
 FEED TANK, 1-2" MI (P+S) TO COFFERDAM, 1-4" MI (P+S) TO N°6 D.B. TANK, 1-6" MI (P+S) TO DEEP TANK, ALL IN PASSAGE (P+S) ABREAST MIDSHIP DECKHOUSE. ✓
 1-6" MI (P+S) TO DEEP TANK, 1-4" MI (P+S) TO N°6 D.B. TANK, 1-4" MI (P+S) TO N°7 D.B. TANK, ABREAST END OF HATCH OVER DEEP TANK. ✓
 1-4" MI (P+S) TO N°7 D.B. TANK, 1-3" MI (P+S) TO N°8 D.B. TANK, 1-4" MI (P+S) TO DEEP TANK IN N°5 HOLD, ABREAST AFT MAST. ✓
 1-4" MI (P+S) TO DEEP TANK IN N°5 HOLD ABREAST N°5 HATCH. ✓
 1-2" MI (P+S) AND 1-3" MI (P) TO AFT PEAK - ABREAST AFT DECKHOUSE ✓

ALL AIR PIPES TO O.F. DOUBLE BOTTOM, BUNKERS & SETTLING TANKS FITTED WITH GRAUZE, ELSEWHERE TO WATER BALLAST FITTED WITH WOOD PLUGS. ✓

Particulars of Gangway Cargo and Coaling Ports:—

Armathia.

NONE.

Particulars of Scuppers and Sanitary Discharge Pipes:—

DISCHARGES & SCUPPERS:— from Captains Accommodation, from Officers & Engineers accommodation in Midship Deckhouse, and from WC's & Washplaces in after Deckhouse, carried through ships side below Freeboard deck fitted with M.I. Storm Valves. ✓

DISCHARGES & SCUPPERS:— from WC's, showers and wash basins in Defence Personal & Stewards Quarters in tween deck abreast Engine casing (P. side) carried through ships side below 2nd Deck, fitted with brass Storm Valves, operated by rod from Freeboard dk. ✓

SCUPPERS:— from Stewards' mess space & from crew space in tween deck aft, carried through ships side below 2nd deck, fitted with M.I. Storm Valves, operated by rod from upper deck. ✓

Particulars of Side Scuttles:—

CREWS QUARTERS IN TWEEN DECK AFT - 10' SIDELIGHTS.
 RATINGS & CREWS QUARTERS IN TWEEN DK. AT P. SIDE ABREAST ENGINE CASING - 12' SIDELIGHTS
 ALL SIDELIGHTS OF SUBSTANTIAL CONSTRUCTION & FITTED WITH HINGED DEADLIGHTS. ✓

Vertical distance of Sill of lowest Side Scuttle above top of keel

34'-8 1/2" ✓

Particulars of Guard Rails:—

FO'LE DECK. Open rails 3'6" high with 2 rods and having stanchions spaced about 5'0" apart.
 UPPER DECK. Open rails 3'9" high with 3 rods and having stanchions spaced about 5'0" apart. ✓

Particulars of Gangways, Lifelines, etc.:—

Provision made for rigging lifelines. ✓

Particulars of Freeing Arrangements.

	Length of Bulwark	Height of Bulwark	Size of Freeing Ports	Number each side	Area each side	Rule area each side
After Well						
Forward Well						
State position of each freeing port { After Well:— (F. and A. position and height above deck edge) Forward Well:—						
State whether the freeing ports are fitted with shutters, bars, or rails, and give particulars of such:—						
Additional area where sheer is less than standard.						

PARTICULARS OF PROTECTION TO OPENINGS, ETC.

HATCHWAYS ON FREEBOARD AND SUPERSTRUCTURE DECKS.										
Description of Hatchway	Nº 1. HATCH	Nº 2 HATCH	Nº 3 HATCH	HATCH OVER DEEP TANK	Nº 4 HATCH.	Nº 5 HATCH.				
Dimensions of Hatchway	26'3" x 22'0"	32'6" x 22'0"	15'0" x 22'0"	15'0" x 22'0"	32'6" x 22'0"	32'6" x 22'0"				
COAMINGS	Height above Deck ... Thickness ... Sides ... Ends ... Brackets, Stays ...									
HATCH BEAMS	Number ... Spacing ... Scantling and Sketch ... PLATE ... ANGLES ... Bearing Surface ...	5 4'9 3/8" 19" x 36" 5'3" x 42" 3"	5 5'5 5/8" 20" x 40" 18 1/2" x 36" 5'3" x 40" 3"	SLIDING 2 5'1 3/4" 17 1/2" x 36" 5'3" x 40" 3"	BEAMS 2 5'1 3/4" 17 1/2" x 36" 5'3" x 40" 3"	5 5'5 5/8" 18 1/2" x 36" 5'3" x 40" 3"				
FORE AND AFTERS	Number ... Spacing ... Unsupported Lengths ... Scantling and Sketch ... Bearing Surface ...	HATCH IN POLE PEAK STORE. 3'9" x 3'0" COAMING BA. 9'5" x 40" COVERS 2 3/8" BEARING 2 1/2" CLEATS 20" 1 TARPULIN.	HATCH TO STORE AFT AT AFT END OF DECKHOUSE 3'9" x 2'6" COAMING 30" x 40" COVERS 2 3/8" BEARING 2 1/2" CLEATS 21" 2 TARPULINS.	COAL HATCH AT FRONT OF MID. HOUSE (STAR SIDE) 23' x 29' COAMING 30" x 40" COVERS 2 3/8" BEARING 2 1/2" CLEATS 15" 2 TARPULINS.						
HATCH COVERS	Material ... Thickness ... How fitted ... Bearing Surface ...		2 3/8" SOLID WOOD COVERS. FITTED FORE & AFT. BEARING 2 1/2"							
Spacing of Cleats	24"	24"	24"	24"	24"	24"				
Number of Tarpaulins	2	2	2	2	2	2				
*Are wood fore and afters steel shod at all bearing surfaces? <input checked="" type="checkbox"/> Are battens and wedges efficient and in good condition? <input checked="" type="checkbox"/> Are tarpaulins in good condition and in accordance with rule requirements? <input checked="" type="checkbox"/> Are lashings provided in accordance with rule requirements? <input checked="" type="checkbox"/>										

Particulars of any special features:—

Endorsement at first survey and at surveys for renewal of Certificate:—

The fittings and appliances are in accordance with the particulars shown on this form (or as now modified) and are in good condition.



© 2021

Lloyd's Register
Foundation