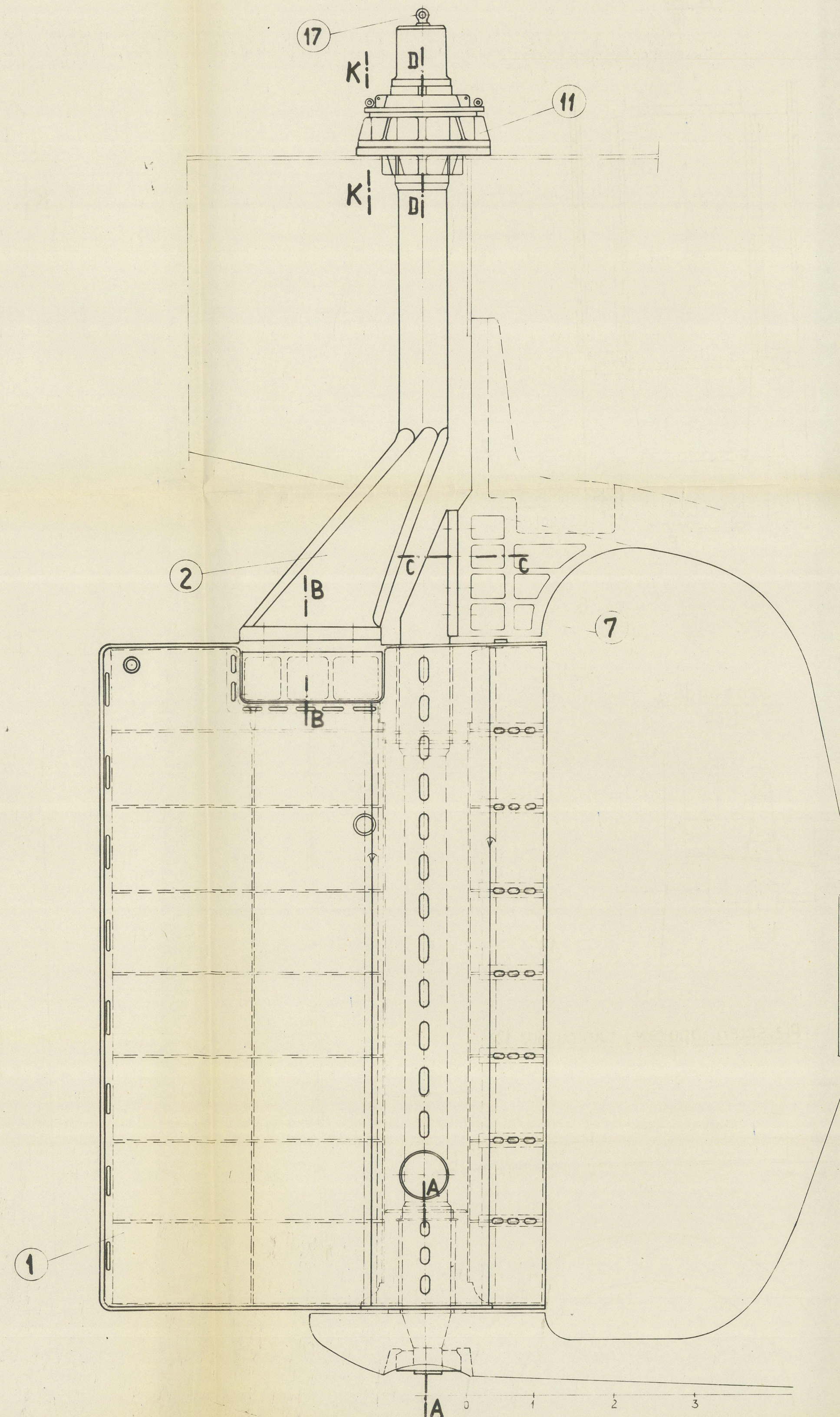
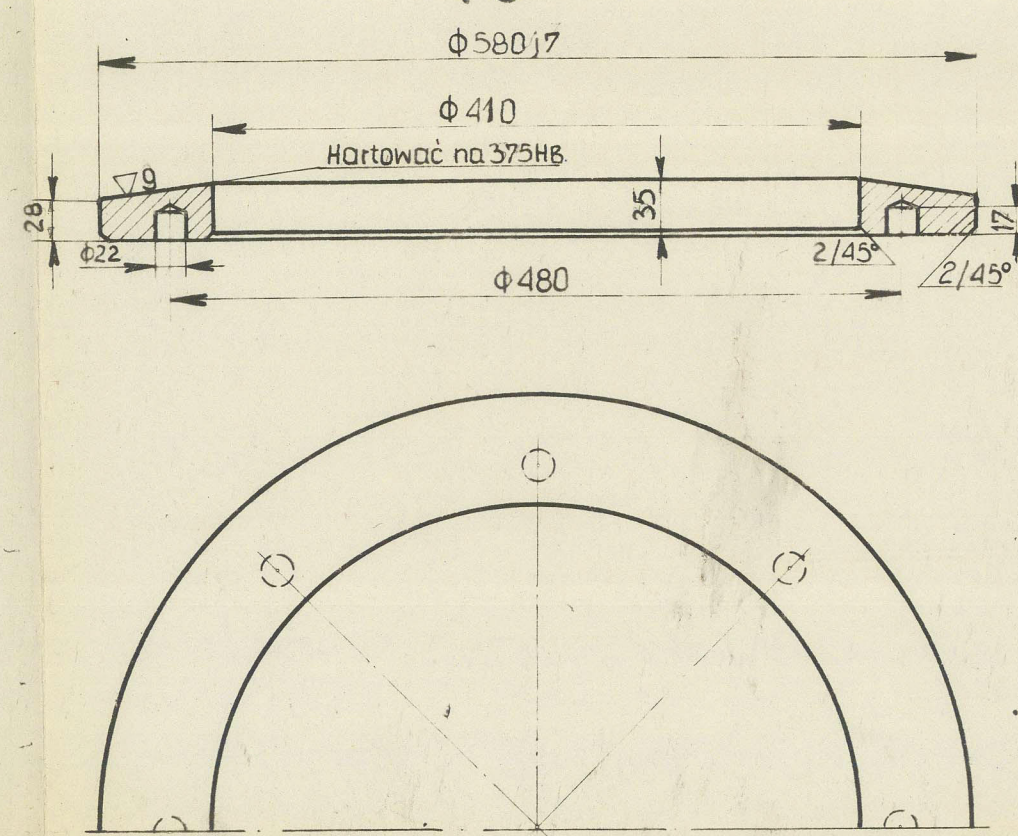


Thrust ring
Pierścień oporowy tylnicy poz. 12



PN-50 M-82230	24	Wkręt M12 x 30 Bolt	1	0,026	0,026	wg normy
PN M-85045	23	Wpust zaokrąglony otw. 45x25x120 Spline	1	0,16	0,16	wg normy
PN-55 M-85020	22	Kółko stożkowe 20 x 100 Dowel pin	4	0,28	1,12	45
PN-58 M-82146	21	Nakrętka M36 Hexagon nut	3,67	10	0,367	3,67
PN-58 M-82154	20	Nakrętka niska M36 Hexagon nut	183	10	0,183	1,83
PN M-82128	19	Śruba dwustronna M36 x 120 double nutted bolt	12,0	10	1,2	12,0
PN-55 H-92120	18	Podkładka φ1030/650 x 50 Reinforcing	1	1	190,0	190,0
PN M-82172	17	Śruba z uchem M72 Eye bolt	17,1	1	17,1	17,1
PN-55 H-93202	16	Uszczelnienie 16x10x950 Rubber packing	1	1	1,0	1,0
PN-55 M-82273	15	Uszczelnienie 30x20x1320 Rubber packing	1	1	1,48	1,48
PN-55 H-93202	14	Płaskownik 10x80x400 Flange	0,8	1	0,8	0,8
PN-55 M-82273	13	Wkręt M20 x 40 Bolt	0,64	8	0,078	0,62
LT2	12	Pierścień oporowy tylnicy Thrust ring	30	1	30	30
ZN-59 MPC-02-100698	11	Łożysko górne trzonu sterowego Thrust bearing of the rudder	1	1	1440	1440
ZN-59 MPC-02-100697	10	Nakrętka 6-kt M72 x 4 Hexagon nut	19,8	8	249	19,8
B45-I 212-5-5	9	Nakrętka 6-kt niska M72 x 4 Hexagon nut	945	8	1,18	9,45
B45-I 212-5-1	8	Śruba pasowana M72 x 4 Fitted bolt	5	8	104	832
B45-I 212-5-2	7	Os steru Rudder pintle	1	1	5493	5493
B45-I 212-01	6	Nakrętka okrągła M290 x 6 Round nut	1	1	120	120
ZN-59 MPC-02-100698	5	Nakrętka 6-kt M100 x 4 Hexagon nut	438	6	7,64	45,8
ZN-59 MPC-02-100697	4	Nakrętka 6-kt niska M100 x 4 Hexagon nut	204	6	34	204
B45-I 212-02	3	Śruba pasowana M100 x 4 Fitted bolt	6	6	298	178
B45-I 212-01	2	Trzon sterowy Rudder stock	1	1	5600	5600
B45-I 212-01	1	Płetwa steru Rudder plate	1	1	7000	7000
Norma kat 1:5	Poz	Nazwa elementu				

Delivery Documents
m/JOHANNES LUTHEARI
Chief Constructor

Centr. Biuro Konstr. Określonych Nr.1 0/Szczecin	
Zestaw sterowy Rudder assembly	B4 54 I/1,26 2 1 2 - 0 0
Skala 1:25 1:10 1:25 1:5	011877-011883-01146
Rozmiar 860x470	
04	

RUDDER ASSEMBLY

AS FITTED PLAN N°6 (3).

"JOHANNES LATUHARHARY"



F.E. REPORT N°~084

STOCZNIA SZCZECINSKA, SZCZECIN, POLAND.

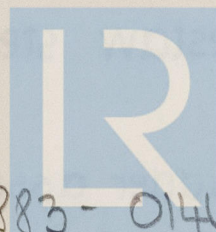
YARD N° B454/006.

This plan has been verified with the approved plans, and includes any modifications and/or additions to the original approved arrangements made during construction which have been approved locally as being in accordance with or by standards equivalent to Rule requirements.

Signature D.B. Dugdale
Surveyor to Lloyd's Register of Shipping
Date 1st October 1964.

RECORDS DEPT.
LONDON.

13



© 2021

Lloyd's Register
Foundation

011877- 011883- 0146