

LLOYD'S REGISTER OF SHIPPING

Index No.
(For London Office only.)

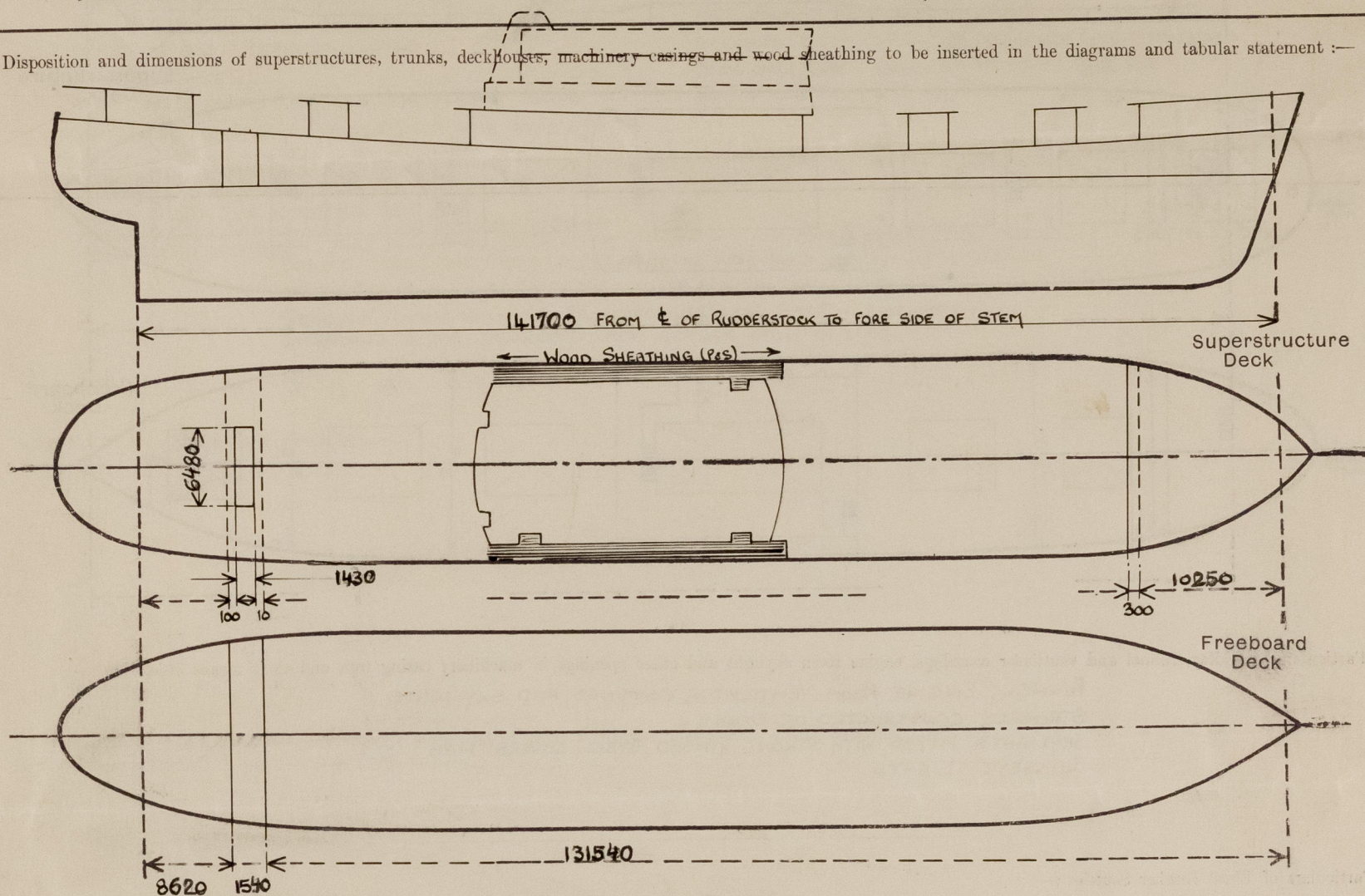
SURVEYS FOR FREEBOARD

No 140

(CONDITIONS OF ASSIGNMENT)

Ship's Name **"JOHANNES LATUHARHARY"** Port of Survey **GDANSK (AT SZCZECIN)**
 Official Number **---** Surveyor's Signature **M. Pycinski & W.B. Dugdale**
 Nationality and Port of Registry **INDONESIAN DJAKARTA** Date of Survey **WHILST BUILDING, JULY 1964**

Disposition and dimensions of superstructures, trunks, deckhouses, machinery casings and wood sheathing to be inserted in the diagrams and tabular statement:—



Particulars of Superstructures, Trunks, Casings, Deckhouses.

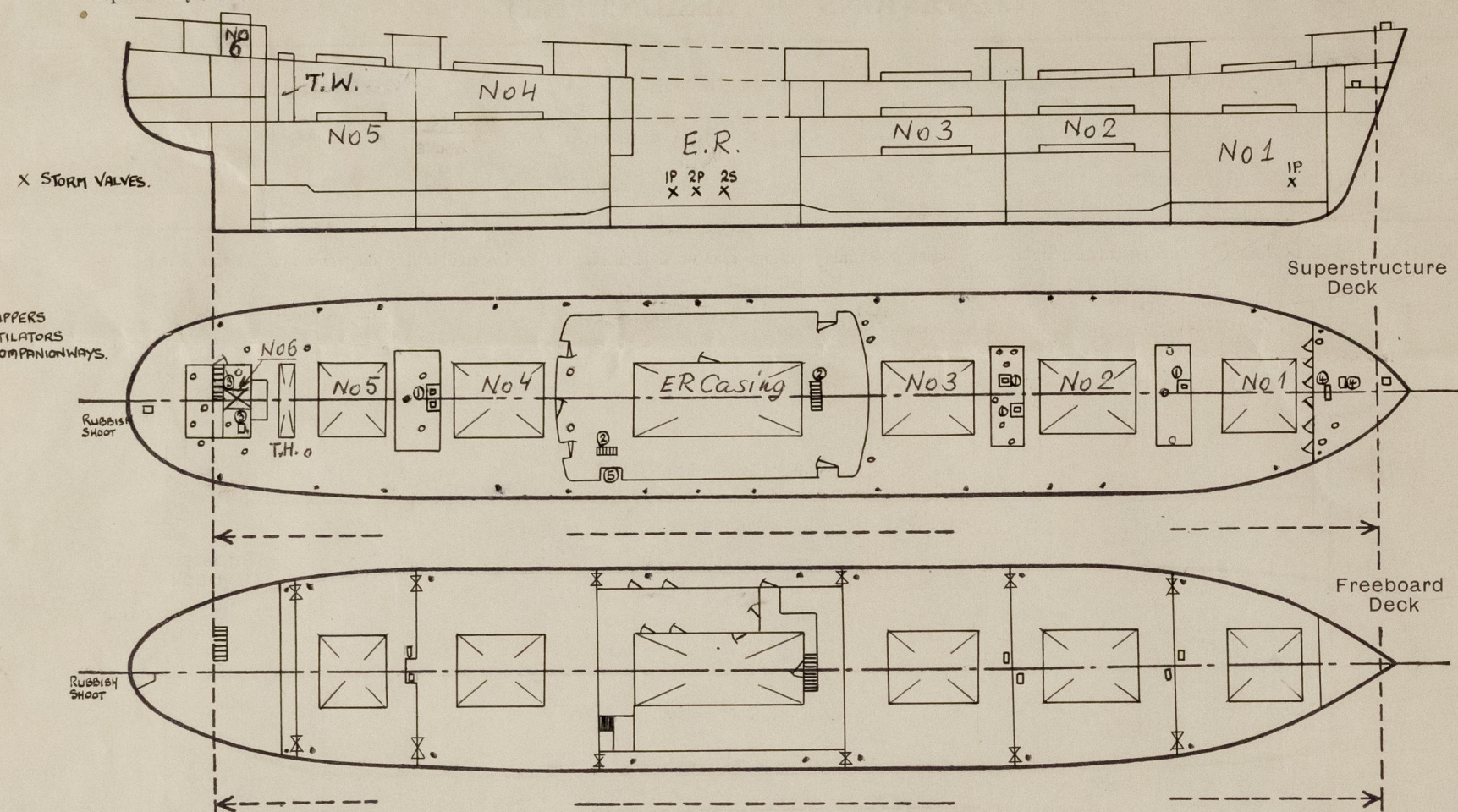
	Coaming mm	Plating mm	Stiffeners mm	Spacing mm	End Attachments of Stiffeners mm	Size of Openings mm	Height of Sills mm	Height, Beam to Beam mm
Poop Bulkhead ...	1220 x 8.5	1200 x 6.5 1740 x 7.5	100 x 75 x 8 O.A.	650	EW TOP BKT BOTTOM	—	—	4025
Raised Quarter Deck Bulkhead ...	6.5	6.5	100 x 75 x 8 O.A.	820	EW TOP & BOTTOM	2 Tonn. OPENINGS 980 x 1270	580	3985
Bridge, After Bulkhead ...	6.5	6.5	75 x 50 x 8 O.A.	760	EW TOP & BOTTOM	5-1400 x 650 1-1400 x 650	610	2300
Forecastle Bulkhead ABOVE SHELTER DK.	6.5	6.5	75 x 50 x 8 O.A.	760	EW TOP & BOTTOM	5-1400 x 650 1-1400 x 650	610	2300
Trunk, Aft ...								
Trunk, Forward ...								
Exposed Machinery Casings on Free- board or Raised Quarter Decks ...								
Exposed Machinery Casings on Super- structure Decks ...								
Machinery Casings within Superstruc- tures not fitted with Class I Closing Appliances ...	7	7	100 x 75 x 8 O.A.	770	EW TOP & BOTTOM	3-1650 x 650	240	3055
MIDSHIP Deckhouse and Pump Room Entrances FRONT	8	8	100 x 75 x 8 O.A.	795	EW TOP & BOTTOM	—	—	2400
SIDES	7	7	75 x 50 x 8 O.A.	770	BKT TOP, EW BOTTOM	5-1400 x 650	610	2400

Particulars of Closing Appliances (state if capable of being manipulated from both sides).

Poop Bulkhead (AFT BHD. Tonn. Well)	NO OPENINGS
Raised Quarter Deck Bulkhead	
Bridge, After Bulkhead (FORWARD BHD. Tonn. Well)	6mm PORTABLE STEEL PLATES SECURED BY HOOK BOLTS (IP, IS)
Bridge, Forward Bulkhead	
Forecastle Bulkhead ABOVE SH. DK.	5 HINGED STEEL W.T. DOORS OPERATED BOTH SIDES (CLASS 1) 1 HINGED HARDWOOD DOOR 50mm THICK OPERATED BOTH SIDES (CLASS 2)
Exposed Machinery Casings on Free- board or Raised Quarter Decks	
Exposed Machinery Casings on Super- structure Decks	
Machinery Casings within Superstruc- tures not fitted with Class I Closing Appliances	3 HINGED STEEL W.T. DOORS OPERATED BOTH SIDES
MIDSHIP Deckhouse and Pump Room Entrances	5 HINGED HARDWOOD DOORS (IP, IS, 3AFT) 50mm THICK OPERATED BOTH SIDES

PARTICULARS OF PROTECTION TO OPENINGS, ETC.

The following diagrams should be used to indicate the positions of cargo and coaling hatchways, gangway, cargo and coaling ports, side scuttles, scuppers, ventilators, companionways, etc., which would affect the seaworthiness of the ship :-



Particulars of fiddle, funnel and ventilator coamings, engine room skylight and other openings in machinery casing tops and their means of closing :-

FUNNEL, ENGINE ROOM VENTILATOR COAMINGS, AND SKYLIGHTS
STRONGLY CONSTRUCTED OF STEEL.
SKYLIGHTS FITTED WITH STRONG HINGED STEEL COVERS WITH
BULLSEYE LIGHTS.

Particulars of Flush Bunker Scuttles :-

NONE.

Particulars of Companionways :- 1. 5-HOLD ACCESS HATCHES INCORPORATED IN STRONG STEEL MASTHOUSES AND TRUNKED TO MASTHOUSE
(including those incorporated in deckhouses and masthouses) DECKS, WITH 4 OPENINGS 600x600mm, COAMING 460x11mm, CLOSED BY 5mm THICK
HINGED STEEL W.T. COVERS SECURED BY 4 TOGGLES.

2. 2 COMPANIONWAYS INCORPORATED IN STRONG STEEL DECKHOUSE AMIDSHIPS.
3. TUNNEL ESCAPE HATCH 600x600mm, CLOSED BY HINGED STEEL PLATE (SS) AND ACCESS TO N°6 HOLD (PS) INCORPORATED IN STRONG STEEL DECKHOUSE AFT, CLOSED BY HINGED STEEL W.T. DOORS 1300x580mm WITH SILLS 610mm HIGH. DOORS OPERATED FROM BOTH SIDES.
4. ACCESS HATCH 800x800mm TO BOSUN'S STORE AND ACCESS HATCH TO CHAIN LOCKER 600x600mm IN FORECASTLE SPACE, CLOSED BY HINGED STEEL PLATES. FORECASTLE SPACE ACCESS BY HINGED STEEL W.T. DOOR 1400x600mm WITH 610mm SILL.
5. PROVISION STORE HATCH BUILT INTO MIDSHIP DECKHOUSE (SS) 930x780 ACCESS OPENING, 610x12 COAMING, CLOSED BY 12mm HINGED W.T. COVER WITH TOGGLES.

Particulars of Ventilators in exposed positions on ~~superstructure~~ superstructure decks :-

FORECASTLE DECK.
1-Ø 250mm x 900mm HIGH x 8mm THICK.
1-Ø 250mm x 1050mm HIGH x 8mm THICK.
1-Ø 300mm x 1050mm HIGH x 9mm THICK.

SHELTER DECK.
1-Ø 250mm x 1080mm HIGH x 8mm THICK.
2-Ø 400mm x 1400mm HIGH x 10mm THICK.
2-Ø 700mm x 950mm HIGH x 11mm THICK.
1-Ø 322mm x 1450mm HIGH x 15mm THICK.

AFTER DECKHOUSE.
2-Ø 250mm x 980mm HIGH x 8mm THICK.
1-Ø 250mm x 1150mm HIGH x 9mm THICK.
1-Ø 300mm x 1170mm HIGH x 9mm THICK.
1-Ø 400mm x 1500mm HIGH x 10mm THICK.

FORWARD MASTHOUSE.
1-Ø 400mm x 1380mm HIGH x 10mm THICK.
2-Ø 600mm TRUNKED THROUGH CASING SIDES
(AS) CLOSED BY HINGED STEEL W.T. COVERS.

CENTRE MASTHOUSE.
2-Ø 600mm x 2100mm HIGH x 11mm THICK.
1-Ø 500mm x 1900mm HIGH x 12mm THICK.
2-Ø 250mm x 825mm HIGH x 8mm THICK.
1-Ø 350mm x 500mm HIGH x 9mm THICK.

AFTER MASTHOUSE.
1-Ø 500mm x 1880mm HIGH x 12mm THICK.
2-Ø 600mm x 1770mm HIGH x 11mm THICK.

ALL VENTILATOR COAMINGS OF 915mm AND HIGHER ARE EFFICIENTLY STAYED TO DECK.
VENTILATORS CLOSED BY HINGED STEEL W.T. COVERS SECURED BY TOGGLES OR BY
SCREW DOWN W.T. STEEL LIDS.

Particulars of Air Pipes in exposed positions on freeboard, raised quarter, or superstructure decks :-

AIR PIPES 650mm HIGH ON FORECASTLE DECK AND 740mm HIGH
ON SHELTER DECK, 5mm THICK, FITTED WITH BALL FLOAT VALVES.
OIL FUEL AIR PIPES FITTED WITH GAUZES.

FORECASTLE DECK :- 4 Ø 125 7m dia. x 650 7m high x 4.8 7m thick.
SHELTER DECK :- 24 Ø 125 7m dia. x 740 7m high x 4.8 7m thick.
3 Ø 150
3 Ø 100
2 Ø 50
1 Ø 80
1 Ø 65
1 Ø 34
1 Ø 25

Particulars of Gangway Cargo and Coaling Ports :-

NONE.

Particulars of Scuppers and Sanitary Discharge Pipes :-

~SCUPPERS~

FORECASTLE DECK.
1P, 1S GALVANISED STEEL PIPES LED TO SHELTER DECK.
SHELTER DECK.
13P, 13S GALVANISED STEEL PIPE BENDS LED THROUGH SHIPS SIDE ABOVE FREEBOARD DECK.
FREEBOARD DECK.
10 OFF LED TO HOLD BILGES, WITH SCREW DOWN VALVES CONTROLLED FROM ABOVE SHELTER DECK, WITH OPEN/SHUT INDICATORS.
4 OFF LED TO ENGINE ROOM BILGES, WITH SELF CLOSING COCKS SITUATED IN ACCESSIBLE POSITIONS.
TONNAGE WELL DRAINED OVER BOARD THROUGH 125mm DIA SCUPPERS PAS BELOW FBD DECK WITH SHUT/OPEN INDICATORS & SDNRY CONTROLLED FROM SHDECK.
BOSUN'S STORE AND CHAIN LOCKER PROVIDED WITH HAND PUMPS - DISCHARGE LED OVERBOARD ABOVE FREEBOARD DECK WITH N.R. VALVE IN LINE.
STEERING FLAT & NO.6 HOLD PROVIDED WITH HAND PUMP - DISCHARGE LED OVERBOARD ABOVE FREEBOARD DECK WITH N.R. VALVE IN LINE.

~SANITARY DISCHARGES~

FROM FORECASTLE SPACE TOILET ABOVE SHELTER DECK, LED OVERBOARD BELOW FREEBOARD DECK, WITH SCREW DOWN N.R. VALVE ON SHIPS SIDE (PORT).
FROM MIDSHIP DECKHOUSE AND FREEBOARD DECK SPACES AMIDSHIPS 5 OFF (3P, 2S) LED OVERBOARD BELOW FREEBOARD DECK WITH SCREW DOWN N.R. VALVES ON SHIPS SIDE CONTROLLED FROM ENGINE ROOM.

ALL SHIP'S SIDE VALVES ARE OF GALVANISED MILD STEEL.

Particulars of Side Scuttles and Deadlights :-

NONE.

Vertical distance of Sill of lowest Side Scuttle above top of keel NONE BELOW FREEBOARD DECK.

Distance from amidships to centre of lowest Side Scuttle

Particulars of Guard Rails and Bulwarks :- BULWARK FULL LENGTH OF SHELTER DECK (P&S) 1100mm HIGH, 6.5mm THICK, WITH 160x10mm B.P. RAIL BAR AND 10mm FLANGED STEEL PLATE STAYS ON ALTERNATE FRAMES, SPACED NOT MORE THAN 1540mm APART.

Particulars of Gangways, Lifelines, etc. :-

NONE.

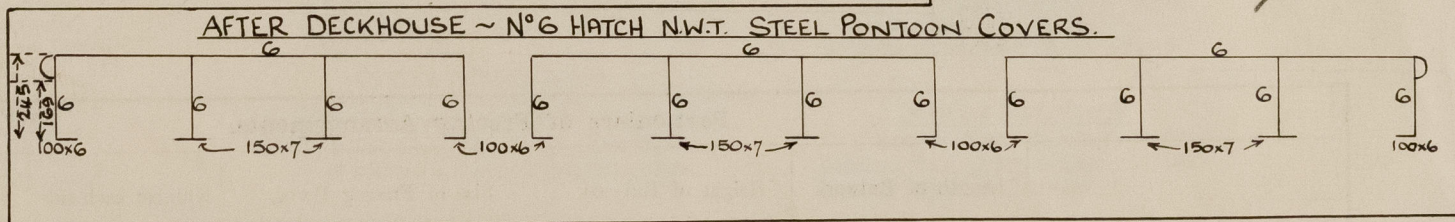
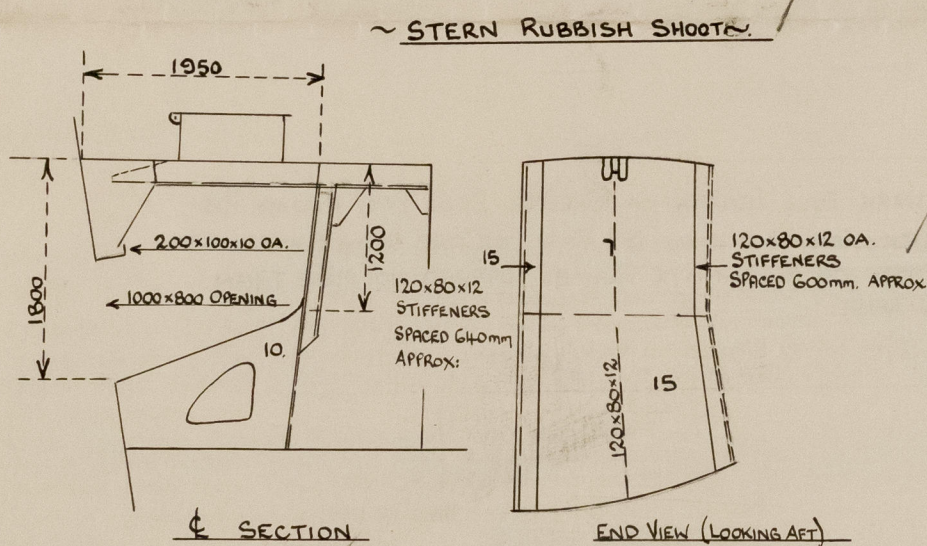
Particulars of Freeing Arrangements.

	Length of Bulwark	Height of Bulwark	Size of Freeing Ports	Number each side	Area each side	Rule area each side
After Well ...						3.189/✓
ABFT MIDSHIP DECKHOUSE.	52.40	1100	52.40 x 115	1.	6.02 M ²	3.287/✓
Forward Well ...						
FORWARD OF MIDSHIP DECKHOUSE.	54.00	1100	54.00 x 115	1.	6.20 M ²	
State position of each freeing port ... (F. and A. position and height above deck edge) { After Well :- Forward Well :-						
State whether the freeing ports are fitted with shutters, bars, or rails, and give particulars of such :- NONE. CONTINUOUS SLOTS.						
Additional area where sheer is less than standard.						

PARTICULARS OF PROTECTION TO OPENINGS, ETC.

HATCHWAYS ON FREEBOARD AND SUPERSTRUCTURE DECKS.											SHELTER DECK.
FREEBOARD DECK											
Description of Hatchway	N°1.	N°2	N°3	N°4	N°5	HOLD ACCESS	N°1.	N°2.	N°3.	N°4	N°5.
Dimensions of Hatchway	7465x3766	13547x6447	11490x6445	13039x6452	8421x6445	6 OFF 600x600	7435x6445	13525x6410	11467x6420	13015x6410	8385x6427
COAMINGS	Height above Deck	264	360	360	360	310	910	910	910	910	910
	Thickness	10	10	10	10	11	11	11	11	11	11
	Sides	10	10	10	10	11	11	11	11	11	11
	Ends	10	10	10	10	11	11	11	11	11	11
3 OFF - Nos 1 & 2	Stiffeners	5 OFF	-	-	-	-	300x62x14 OBP	300x62x14 OBP	260x62x14 OBP	300x62x14 OBP	260x62x14 OBP
4 OFF - Nos 3 & 4	Brackets, Stays	5 OFF	-	-	-	-	230x58x10 OBP	230x58x10 OBP	230x58x10 OBP	230x58x10 OBP	230x58x10 OBP
5 OFF - NO 2	Stays	5 OFF	-	-	-	-	-	-	-	-	-
HATCH BEAMS	Number	5	9	7	9	5	"MAC-GREGOR" STEEL WATERTIGHT HATCH COVERS CONSTRUCTED IN ACCORDANCE WITH APPROVED PLANS.				
	Spacing	1253	1360	1443	1309	1408					
	Scantling and Sketch	170x18	230x24	230x24	230x24	230x24					
	Bearing Surface	100	100	100	100	100					
FORE AND AFTERS	Number	NONE					~ SEE SKETCHES BELOW ~				
	Spacing										
	Unsupported Lengths										
	Scantling* and Sketch										
HATCH COVERS	Material	WOOD	WOOD	WOOD	WOOD	STEEL	50x6 FB				
	Thickness	100	90	80	80	5					
	How fitted	F&A	F&A	F&A	F&A	HINGED W.T.					
	Bearing Surface	70	70	70	70	SECURED BY					
Spacing of Cleats	8 CROSS JOINT WEDGES	575	584	566	576	4 TOGGLES	990/1220	990/1220	990/1220	990/1220	990/1220
Number of Tarpaulins		1	1	1	1	300mm APART, 410mm APART AT CORNERS.	NONE	NONE	NONE	NONE	NONE

Particulars of any special features :- (Timber Deck-cargo Fittings, Skylights, Sewage Systems, Ash Ejectors, Rubbish Shoots, etc.)



HATCHWAYS ON SUPERSTRUCTURE DECKS ETC:- (CONT):~

SHELTER DECK

TONNAGE HATCH:-

DIMENSIONS:- 1540 x 6480

COAMING:- 260x62x14 OBP ALL AROUND

DECK OPENING.

HATCH COVERS:- WOOD 65mm THICK, FITTED F&A. BEARING SURFACE 78mm

COVERS SECURED FROM BELOW BY HEMP LASHINGS.

AFTER DECKHOUSE

N°6 HATCH:-

DIMENSIONS:- 4880 x 5000

COAMING:- 650mm THICKNESS OF SIDES & ENDS 9mm.

BKTS & STAYS:- 260x60x12 OBP

HATCH COVERS:- STEEL PANTOONS, CONSTRUCTED IN ACCORDANCE WITH APPROVED PLANS.

~ SEE SKETCHES BELOW ~

SPACING OF CLEATS:- 610mm

TARPAULINS:- 2.