

~ MIDSHIP SECTION ~

LENGTH OVERALL 224'-2 1/2"
 BREADTH (OVER BELTING) 38'-0"
 LENGTH B.P. 210'-0"
 BREADTH MLD. 36'-6"
 DEPTH MLD. TO UPPER DECK 21'-8"
 DEPTH MLD. TO 2ND. DECK 14'-1"

TO CLASS LLOYDS * 100 A1

"WITH FREEBOARD," "PART WELDED"

DRAUGHT TO BE MAXIMUM CORRESPONDING
TO OPEN SHELTER DECK FREEBOARD

- "B" CLASS COASTER -

NUMERALS -

L = 210.0 FT.
 B = 36.5 FT.
 D = 21.58 FT.
 d = 11.38 FT.
 $\frac{L}{D} = \frac{210.0}{21.58} = 9.7$

1ST. NUMERAL -

L X D = 210.0 X 21.58 = 4531.8

2ND. NUMERAL -

L X (B+D) = 210.0 X 58.08 = 12,196.8

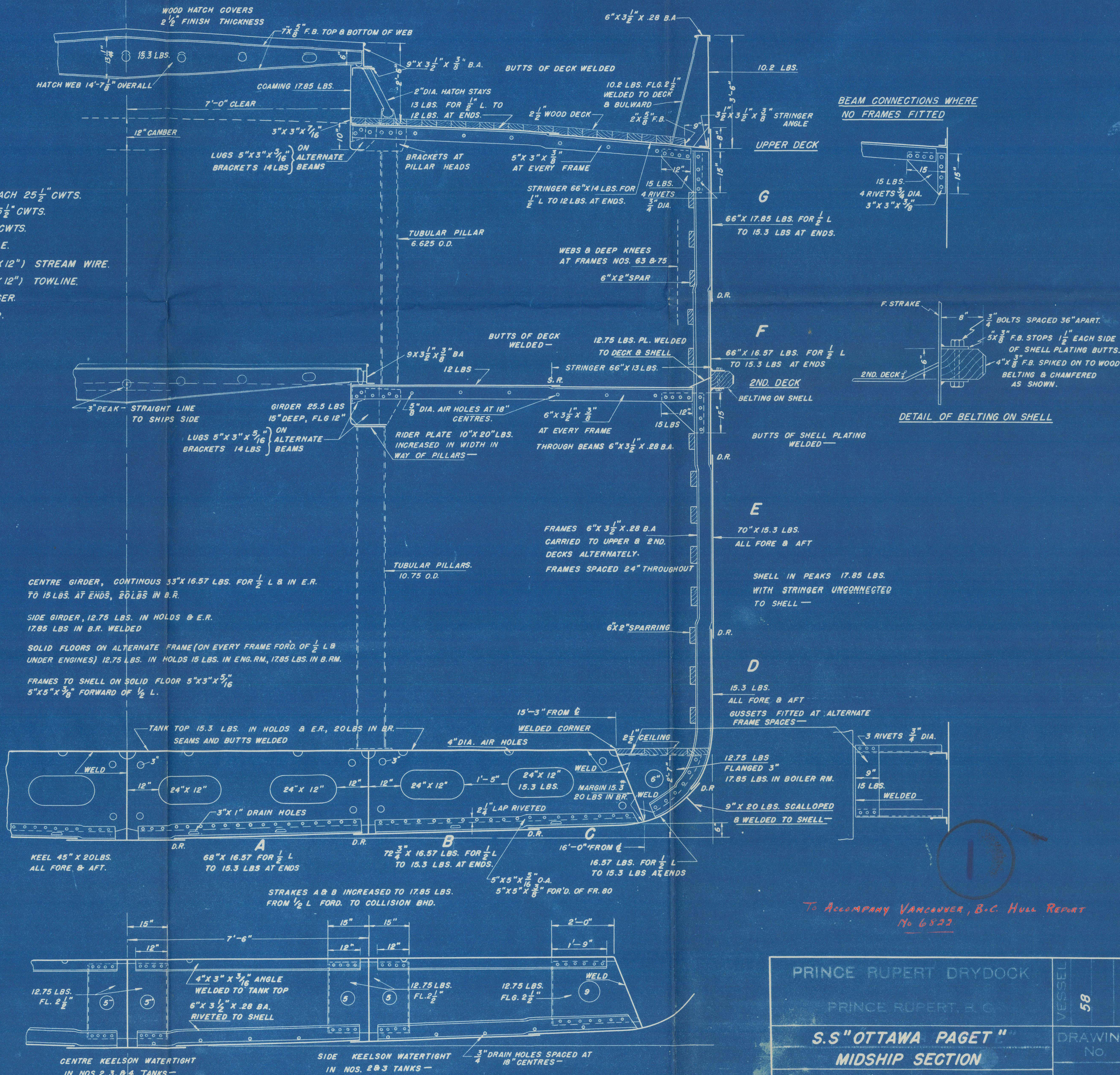
EQUIPMENT NUMERAL -

L X (B+D) = 210.0 X 58.17 = 12,216
 FORECASTLE = 27.5 X 7.0 X .75 = 144.4
 MIDSHIP DECKHOUSE = 27.0 X 8.0 X .5 = 108.0
 AFTER DECKHOUSE = 52.0 X 7.5 X .5 = 195.0
 EQUIPMENT NUMERAL = 12,663.4

- EQUIPMENT -

2 BOWER ANCHORS, STOCKLESS EACH 25 1/2" CWTs.
 1 BOWER ANCHOR, STOCKLESS, 25 1/2" CWTs.
 1 STREAM ANCHOR, STOCKLESS, 8 CWTs.
 210 FATHOMS 1 1/2" STUD LINK CABLE.
 75 FATHOMS 3 1/2" CIRC. F.S.W.R. (6" X 12") STREAM WIRE.
 90 FATHOMS 3 1/4" CIRC. F.S.W.R. (6" X 12") TOWLINE.
 90 FATHOMS 6" CIRC. HEMP. HAWSER.
 90 FATHOMS 5" CIRC. HEMP. WARP.

STEM BAR 7" X 1 3/4"
 STERN FRAME - CAST STEEL
 PROPELLER POST 6 1/4" X 5 1/4"
 RUDDER POST 6 1/4" X 5 1/4"



To Accompany Vancouver, B.C. Hull Report
No 6523

PRINCE RUPERT DRYDOCK		VESSEL	58
PRINCE RUPERT, B.C.			
S.S "OTTAWA PAGET"		DRAWING	No.
MIDSHIP SECTION			
APPROVED	DATE — JANUARY 1946	1013-B	
DRAWN J.F.C.	SCALE — $\frac{1}{2}$ " = 1 FT. ITEM NO.		