

SVENSKUND
45636

LLOYD'S REGISTER OF SHIPPING

UNITED WITH THE BRITISH CORPORATION REGISTER

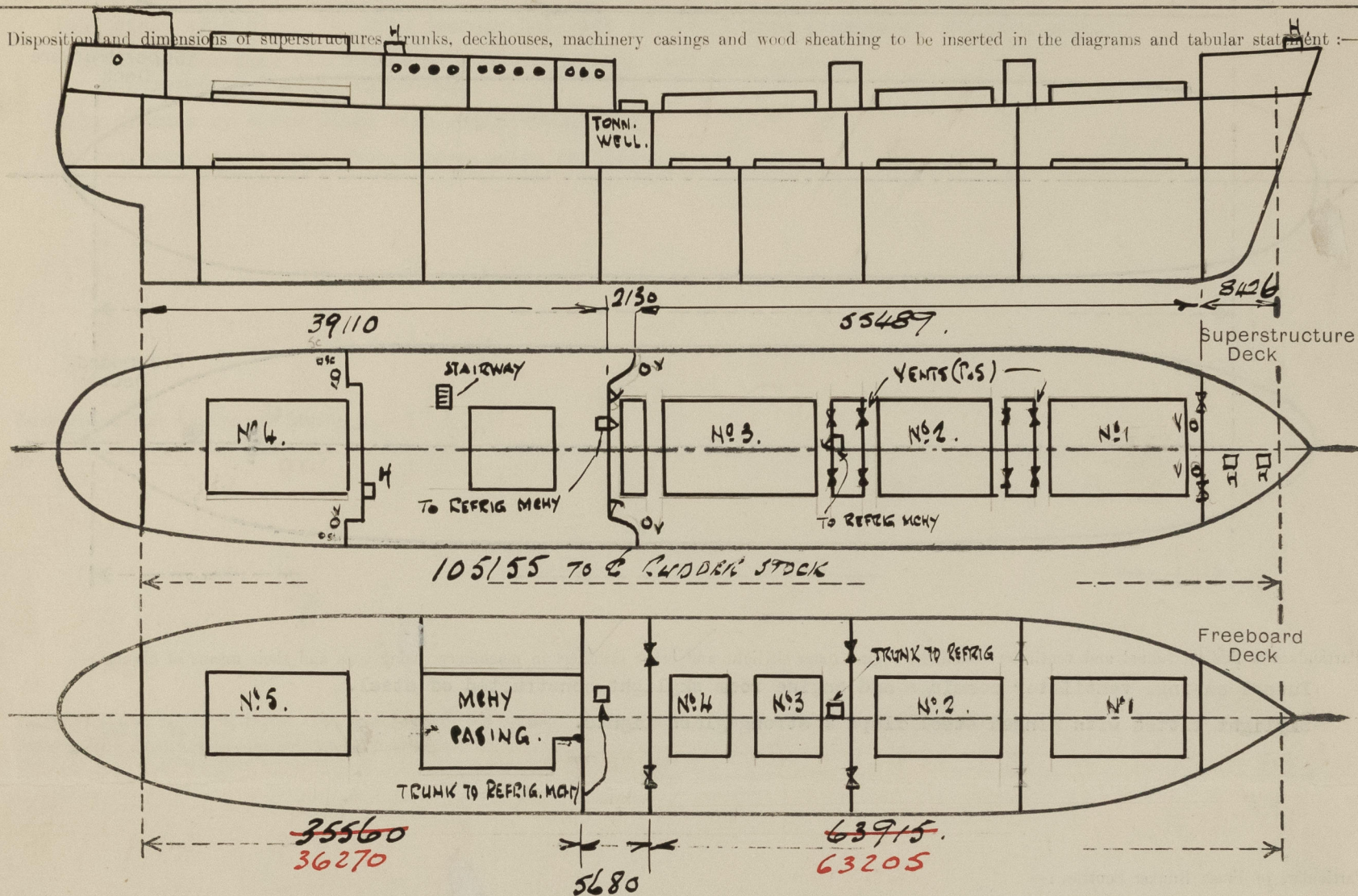
Index No. (For London Office only.)

SURVEYS FOR FREEBOARD.

(CONDITIONS OF ASSIGNMENT.)

Ship's Name "FREDRIKA" Port of Survey Stockholm
Official Number 9798 Surveyor's Signature E. J. MacLachlan
Nationality and Port of Registry Swedish Stockholm Date of Survey During construction.

Disposition and dimensions of superstructures, trunks, deckhouses, machinery casings and wood sheathing to be inserted in the diagrams and tabular statement:-



Particulars of Superstructures, Trunks, Casings, Deckhouses.								
	Coaming	Rating	Stiffeners	Spacing	End Attachments of Stiffeners	Size of Openings	Height of Sills	Height, Beam to Beam
Poop Bulkhead ...	-	6.5	100 x 50 x 8 1 A	740/750	None	2350 x 950	None	2743
Raised Quarter Deck Bulkhead ...	-	7.0	100 x 50 x 8 1 A	740/750	None	2350 x 1320	None	2743
Bridge, After Bulkhead ...	-	6.5	90 x 10 flats	700/725	None	2250 x 1000	None	2440
Bridge, Forward Bulkhead ...	-	6.5	90 x 10 flats	700/725	None	2250 x 1000	None	2440
Forecastle Bulkhead...on Sh. Dk ...	-	6.5	90 x 10 flats	700/725	None	2250 x 1000	None	2440
Trunk, Aft ...								
Trunk, Forward ...								
Exposed Machinery Casings on Freeboard or Raised Quarter Decks ...								
Exposed Machinery Casings on Superstructure Decks ...								
Machinery Casings within Superstructures not fitted with Class I Closing Appliances on Fbd. Dk. ...	-	8.5	100 x 50 x 8 1 A	740/750	Welded	None	-	2743
Deckhouses and Pump Room Entrances		8.5	150 x 75 x 11 1 A	570/750	Welded 2 C 1320 x 584 (To Refr. mchy)	1550 x 730	380	2440

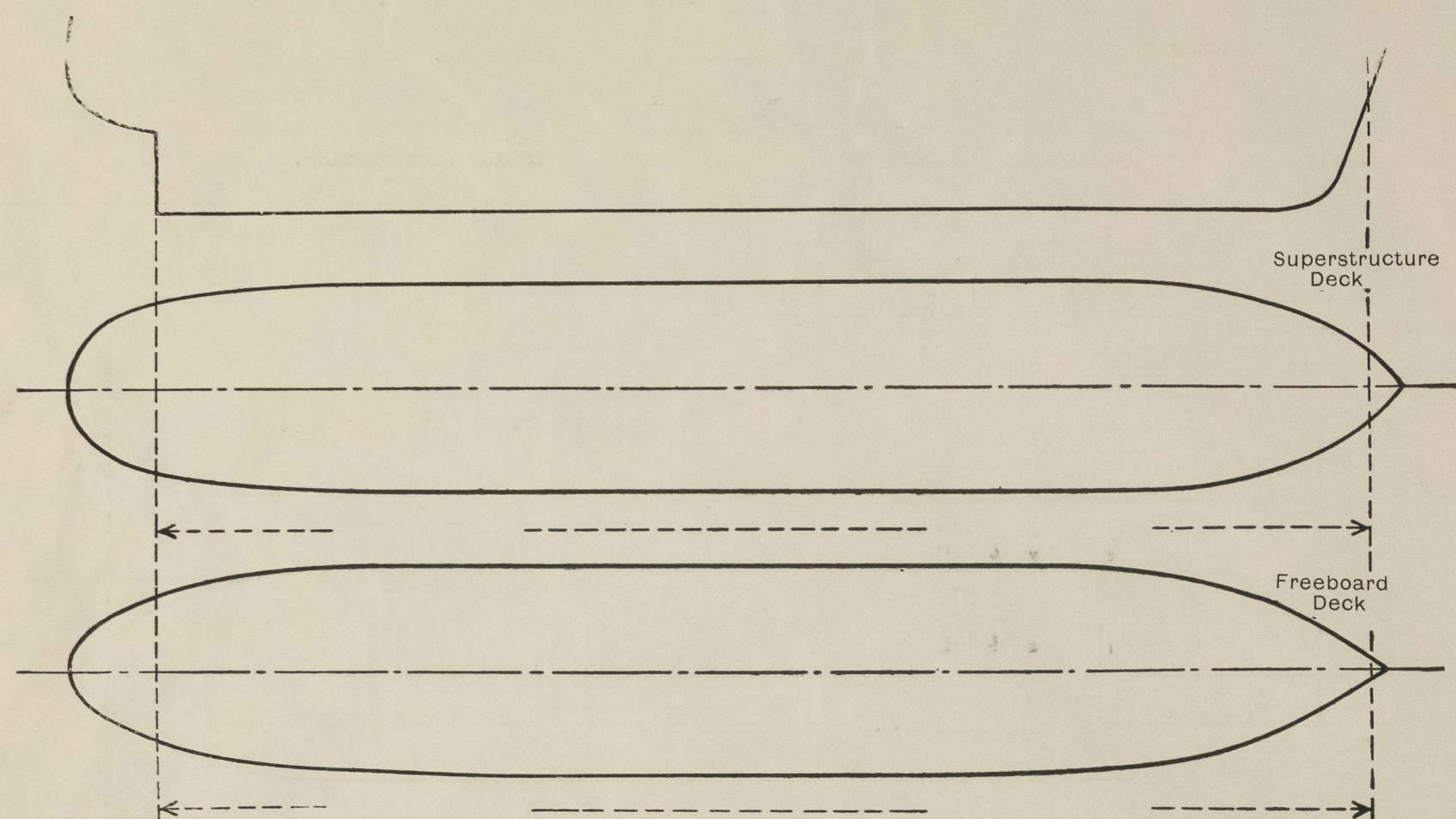
Particulars of Closing Appliances (state if capable of being manipulated from both sides).

Poop Bulkhead ...	Portable steel plates with hook bolts.
Raised Quarter Deck Bulkhead ...	
Bridge, After Bulkhead ...	Portable steel plates with hook bolts.
Bridge, Forward Bulkhead ...	
Forecastle Bulkhead...on Sh. Dk...	Portable steel plates with hook bolts.
Exposed Machinery Casings on Freeboard or Raised Quarter Decks ...	
Exposed Machinery Casings on Superstructure Decks ...	
Machinery Casings within Superstructures not fitted with Class I Closing Appliances ...	No openings.
Deckhouses and Pump Room Entrances	Hinged Steel W.T. doors O.B.S.



PARTICULARS OF PROTECTION TO OPENINGS, ETC.

The following diagrams should be used to indicate the positions of cargo and coaling hatchways, gangway, cargo and coaling ports, side scuttles, scuppers, ventilators, companionways, etc., which would affect the seaworthiness of the ship :—



Particulars of fiddle, funnel and ventilator coamings, engine room skylight and other openings in machinery casing tops and their means of closing :—

Funnel casing, ventilator coamings and engine room skylight constructed of steel.

Skylight fitted with hinged steel flaps & strong glass lights.

Particulars of Flush Bunker Scuttles :—

None.

Particulars of Companionways :—

(including those incorporated in deckhouses and masthouses)

Stairway in strong steel house on shelter deck closed by hinged steel W.T. doors O.B.S. sills 380 x 610 also hatch to refig.mchy closed by hinged steel W.T. door O.B.S. sill 610 mm.

Hatch to steering compt. on Poop deck aft in strong steel deckhouse, closed by hinged steel W.T. door O.B.S. sill 460, also tunnel escape closed by hinged steel door O.B.S. sill 610.

Hatch to refig. mchy. on shelter deck in strong steel masthouse closed by hinged steel W.T. door O.B.S. sill 610.

Particulars of Ventilators in exposed positions on freeboard and superstructure decks :—

Shelter deck. 2 - 600 mm. dia x 11 mm. thick x 4000 mm. high stayed to fcle. 2 - 506 " " " 11 " " " 1800 " " " " deckhouse. 2 - 400x600 on a 2-620x380 openings for vents. in each masthouse 1300 mm. above shelter deck closed by hinged steel W.T. covers 7½ mm. thick secured by 4 clips.

Closed by wood plugs & canvas covers.

Poop Deck. 2 - 700 mm. dia x 11 mm. thick x 1300 mm. high efficiently supported closed by wood plug & canvas cover.

Particulars of Air Pipes in exposed positions on freeboard, raised quarter, or superstructure decks :—

All airpipes of steel 860 mm. above shelter deck provided with efficient closing arrangements.

Oil fuel tank airpipes fitted with wire gauze.

Particulars of Gangway Cargo and Coaling Ports :—

None.

Particulars of Scuppers and Sanitary Discharge Pipes :—

On shelter deck 1 - 3" dia. (P & S) drain led to hold bilges with S.D. valve operated from Poop deck with O/S indicator.

On freebd. deck 2-3" dia. (P & S) " " " " " " " " " Shelter " " " " " 1-3" dia. (P & S) " from tonnage well led to E.R. bilges with lever weighted cock.

Sanitary discharges all from spaces above freebd. deck with gunmetal non-return valves at ships side.

Fcle drained by screw plugs with chain attachment

No overboard discharges from spaces below shelter deck.

Particulars of Side Scuttles and Deadlights :—

12" dia opening gunmetal sidelights with hinged steel deadlights to aft accommodation.

10" " " " " " " " " steering compartment.

Vertical distance of Sill of lowest Side Scuttle above top of keel None below freeboard or shelter deck.

Distance from amidships to centre of lowest Side Scuttle

Particulars of Guard Rails and Bulwarks :—

Shelter deck. Steel bulwarks 6 mm. thick 1100 mm. high all fore & aft with 180 x 75 x 9 BA Rail Bar and 8 mm. plate stays flanged 75 mm. on alternate frames.

Fcle deck. 3 guard rails with stanchions 1050 mm. high 1150 mm. apart and efficient bulwark at fore end.

Particulars of Gangways, Lifelines, etc. :—

None.

Particulars of Freeing Arrangements.

	Length of Bulwark	Height of Bulwark	Size of Freeing Ports	Number each side	Area each side	Rule area each side
After Well	Hanging bulwark	185 mm. clear opening fore & aft			10.27 m ²	1.69 m ²
Forward Well	Top of sheerstrake	100 mm above deck.				

State position of each freeing port { After Well :—
(F. and A. position and height above deck edge) { Forward Well :—

State whether the freeing ports are fitted with shutters, bars, or rails, and give particulars of such :—

Additional area where sheer is less than standard.

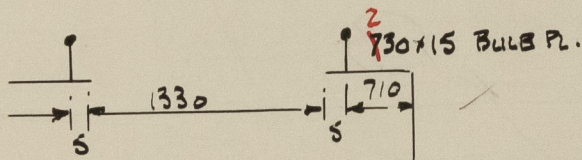
PARTICULARS OF PROTECTION TO OPENINGS, ETC.

HATCHWAYS ON FREEBOARD AND SUPERSTRUCTURE DECKS.											
Freeboard Deck.						Shelter deck.				Poop deck.	
Description of Hatchway	No. 1	No. 2	No. 3	No. 4	No. 5	No. 1	No. 2	No. 3	No. 4	No. 4	No. 4
Dimensions of Hatchway	8220 x 5000	13490 x 6400	7100 x 6400	6390 x 6400	9940 x 5000	8905 x 6400	13490 x 6400	13490 x 6400	8520 x 6400	7799 x 6400	7799 x 6400
COAMINGS	Height above Deck	250	250	250	250	1150	970	1150	290	970	970
	Thickness	15	15	15	15	11	11	11	15	11	11
	Stiffeners	15	15	15	15	11	11	11	15	11	11
	Brackets, Stays	-	-	-	-	125x75x10	125x75x10	125x75x10	-	127x75x10	127x75x10
HATCH BEAMS	Number	5	8	4	4	6			5	1420	1420
	Spacing	1370	1500	1420	1278	1420			450x9	450x9	450x9
	Scantling and Sketch	A 400x9 B 160x22	450x9 260x20	425x9 240x20	425x9 205x20	400x9 175x20	Macgregor steel hatch covers in 5 sections 8.5 mm. thick with 1 web 205x8 with 180x18 welded face flat, ends 205x8 with 90x18 face flats. Cross joint wedges fitted.				190x20
	Bearing Surface	90	90	90	90	90					90
FORE AND AFTERS	Number										
	Spacing										
	Unsupported Lengths										
	Scantling* and Sketch										
HATCH COVERS	Material			Wood					Wood		
	Thickness			60					60		
	How fitted			F & A					80		
	Bearing Surface			80					610		
Spacing of Cleats				610					one		
Number of Tarpaulins				one							
*Are wood fore and afters steel shod at all bearing surfaces? Yes Are battens and wedges efficient and in good condition? Yes Are tarpaulins in good condition and in accordance with rule requirements? Yes Are lashings provided in accordance with rule requirements? Yes Are wood covers fitted with galvanised end bands? Yes											

Particulars of any special features:— (Timber Deck-cargo Fittings, Skylights, Sewage Systems, Ash Ejectors, Rubbish Shoots, etc.)

Tonnage Hatch

1330 x 6400 x 230 high 230 x 15 bulb plate fitted with temporary closing appliances.



Small hatches

On shelter deck to chain locker & store & to No. 4 tween decks

3 - 780 x 780 x 230 high 9 mm. thick fitted with hinged steel W.T. covers 7 mm. thick, secured by 5 clips.

On Pcle deck to store.

1 - 980 x 980 x 610 high 9 mm. thick secured by 8 clips.

On Poop deck to No. 4 tween decks.

1 - 610 x 680 x 460 high 7 mm. thick secured by 7 clips.