

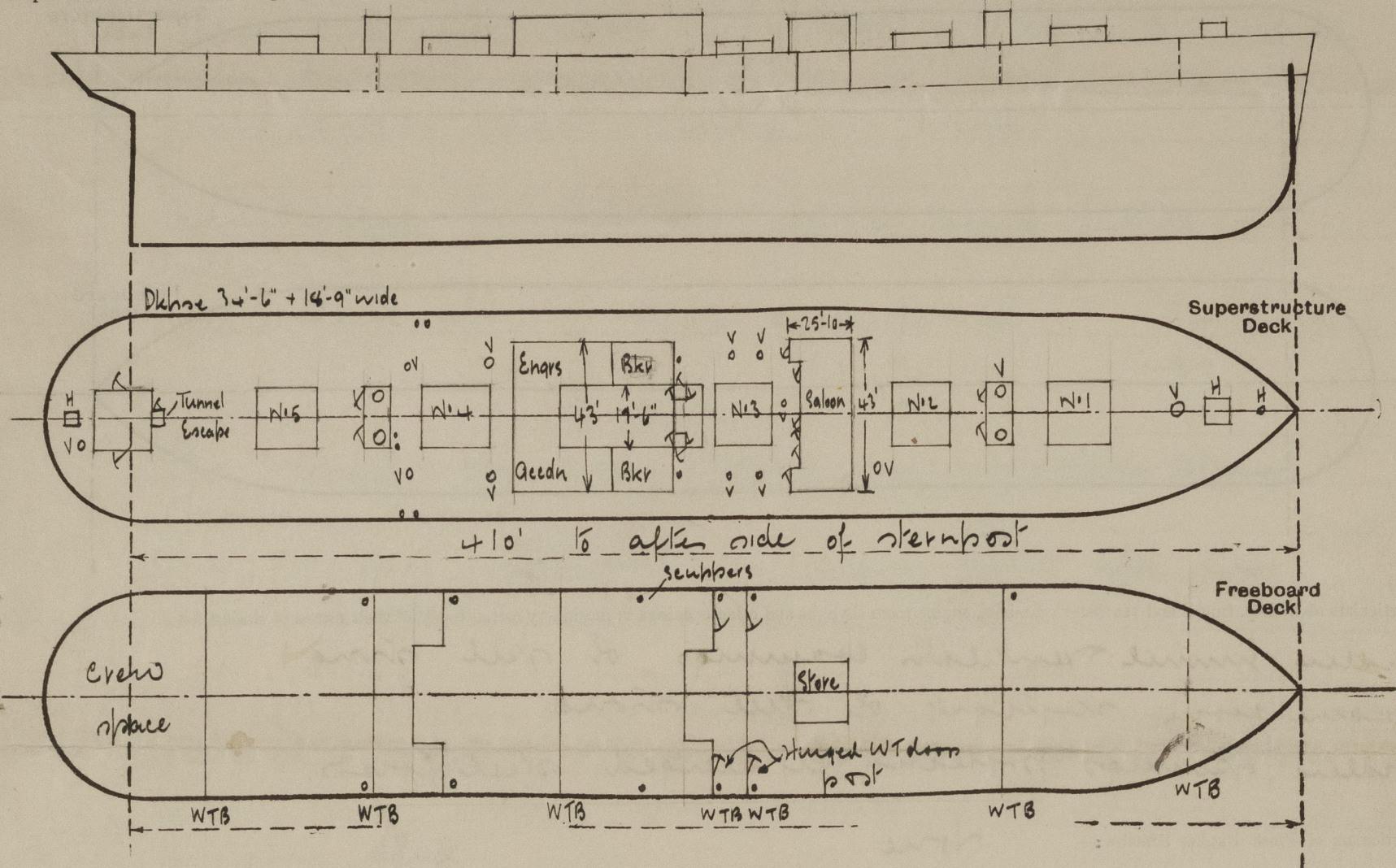
Lloyd's Register of Shipping.
SURVEYS FOR FREEBOARD.

N^o 33666

"EVER FORTUNE" (CONDITIONS OF ASSIGNMENT.)

Ship's Name *EX "Empire" Deed* Port of Survey *Sunderland*
Official Number *2047* ✓ *46943* Surveyor's Signature *Jas Rennie*
Nationality and Port of Registry *Liberian Monrovia* Date of Survey *Whit's building*

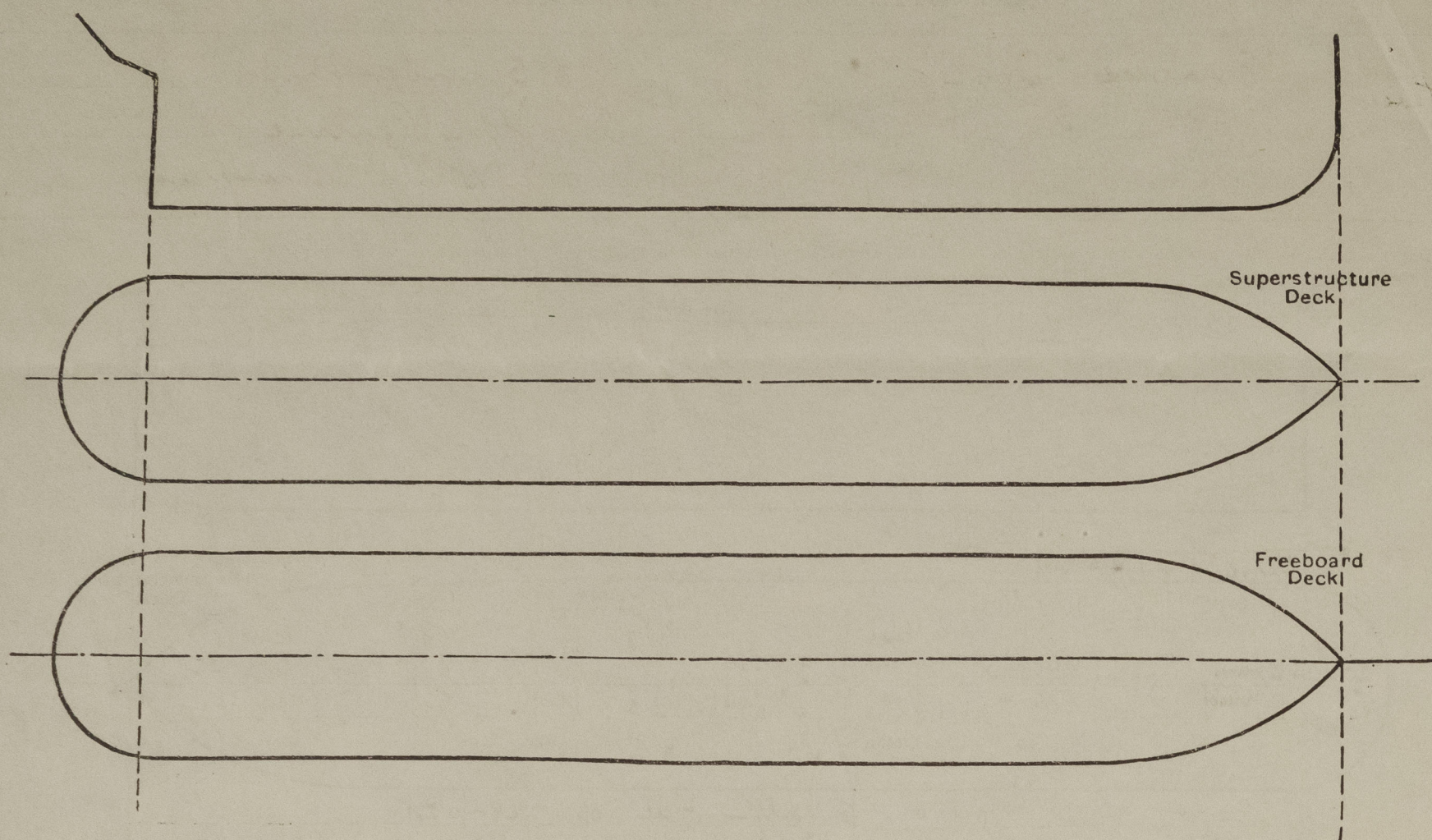
Disposition and dimensions of superstructures, trunks, deckhouses and machinery casings to be inserted in the diagrams and tabular statement:—



Particulars of Superstructures, Trunks, Casings, Deckhouses.								
	Coaming	Plating	Stiffeners	Spacing	End Attachments of Stiffeners	Size of Openings	Height of Sills	Height of Casings
Poop Bulkhead ...	✓							
Raised Quarter Deck Bulkhead ...	✓							
Bridge, After Bulkhead ...	✓							
Bridge, Forward Bulkhead ...	✓							
Forecastle Bulkhead ...	✓							
Trunk, Aft ...	✓							
Trunk, Forward ...	✓							
Exposed Machinery Casings on Freeboard or Raised Quarter Decks ...	✓							
Exposed Machinery Casings on Superstructure Decks ...	✓							
Machinery Casings within Superstructures not fitted with Class I Closing Appliances ...	✓							
Deckhouses on Flush Deck Ships ...	✓	30	5+3+5/16 L	28-30	Bkt T+B	4-5'+25" 1-5'+36"	23"	7'-9"
Particulars of Closing Appliances (state if capable of being manipulated from both sides).								
Poop Bulkhead ...	✓							
Raised Quarter Deck Bulkhead ...	✓							
Bridge, After Bulkhead ...	✓							
Bridge, Forward Bulkhead ...	✓							
Forecastle Bulkhead ...	✓							
Exposed Machinery Casings on Freeboard or Raised Quarter Decks ...	✓							
Exposed Machinery Casings on Superstructure Decks ...	✓							
Machinery Casings within Superstructures not fitted with Class I Closing Appliances ...	✓							
Deckhouses on Flush Deck Ships ...	Hinged steel doors	bulk	17/8" thick	port & starboard	opening from either side			

PARTICULARS OF PROTECTION TO OPENINGS, ETC.

The following diagrams should be used to indicate the positions of cargo and coaling hatchways, gangway, cargo and coaling ports, ventilators, companionways, etc., which would affect the seaworthiness of the ship:—



Particulars of fiddle, funnel and ventilator coamings, engine room skylight and other openings in machinery casing tops and their means of closing:—

Fidler, funnel & ventilator coamings of steel strong. ✓
 Engine room skylight of steel strong. ✓
 Fidler openings protected by hinged steel covers. ✓

Particulars of Flush Bunker Scuttles:—

None.

Particulars of Companionways:— Trunks to holds in makhouses. Steel hinged doors to same 23" sills. ✓

Entrance door to crew space aft in strong steel deckhouse with hinged peak door ^{1 1/2" thick} port & starboard 23" sill. ✓
 Tunnel escape aft steel, with hinged steel door 23" sill ✓ all doors secure from both sides. ✓

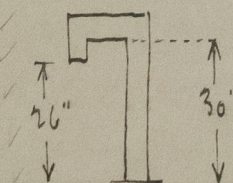
Particulars of Ventilators in exposed positions on freeboard and superstructure decks:—

Fore Peak	1 Vent	6" dia	36" high	30" thick	✓
No 1 Hold	1 "	23" "	11'-6" "	50" staved	✓
Makhouse Top	4 "	30" "	18" "	40" "	✓
Refry Store	2 "	9" "	34" "	32" "	✓
No 2, 3, 4 Holds	5 "	21" "	34" "	40" "	✓
Cross Bunker	2 "	12" "	34" "	34" "	✓
Bunker Twin Dk	2 "	15" "	18" "	36" on Casing Top	✓
Gunnets	2 "	11" "	34" "	34" "	✓
"	5 "	7" "	30" high	gooseneck	✓
"	1 "	6" "	30" "	"	✓
Tween Dk aft	8 "	6" "	34" "	30" thick	✓
"	5 "	9" "	34" "	32" "	✓
Bottom Bkd Airspace	2 "	6" "	30" high	"	✓

All vents closed by wooden plugs and canvas covers. ✓

Particulars of Air Pipes in exposed positions on freeboard, raised quarter, or superstructure decks:—

Fore Peak Tank	1 -	4" dia	26" to top	✓
No 1 d/b tank	1 -	4" "	"	✓
No 2 "	4 -	3" "	"	✓
No 3 "	2 -	4" "	"	✓
No 4 " Bl. Rm	2 -	4" "	"	✓
No 5 " E Rm	2 -	3 1/2" "	"	✓
No 6 "	4 -	3" "	"	✓
Deep Tank aft	4 -	3" "	"	✓
A P Tank	1 -	5" "	"	✓
Deep Tanks Eng Rm	2 -	5" "	"	✓
" " Ford	2 -	5" "	"	✓



Air pipes closed by wooden plugs. ✓



© 2020

Lloyd's Register Foundation

Particulars of Gangway Cargo and Coaling Ports:—

None.

Particulars of Scuppers and Sanitary Discharge Pipes:—

Tween Dk 6 - 2 1/2" dia each side led to bilges. ✓
 " Refrig Store 1 - 2" " led to bilge. liquid sealed trap. ✓
 " Gunner 1 - 2 1/2" " " — " —
 " " 1 - 4" " soil pipe overboard. Storm valve at shell. S.D. control at Upper Dk ✓
 " " 1 - 2" " W.B. discharge " — " — ✓
 Cruise Stern 1 - 2" " led to funnel well with self closing cock. ✓

Particulars of Side Scuttles:—

Side scuttles 10" dia fitted with hinged deadlights. ✓

Vertical distance of Sill of lowest Side Scuttle above top of keel

35'-0" ✓

Particulars of Guard Rails:—

Guard rails 3'-3" high 3 rows stanchions 5' apart ✓
 Bulwark forward 3'-3" " .25 thick 5 rail bar efficiently stiffened 40' long ✓
 " amidships 3'-3" " " " " 123' " ✓
 Two freeing ports in bulwark 15' + 9" each side. ✓

Particulars of Gangways, Lifelines, etc.:—

✓

Particulars of Freeing Arrangements.

	Length of Bulwark	Height of Bulwark	Size of Freeing Ports	Number each side	Area each side	Rule area each side
After Well	✓					
Forward Well	✓					

State position of each freeing port { After Well:—
 (F. and A. position and height above deck edge) { Forward Well:—

State whether the freeing ports are fitted with shutters, bars, or rails, and give particulars of such:—

Additional area where sheer is less than standard.



© 2020

Lloyd's Register Foundation

PARTICULARS OF PROTECTION TO OPENINGS, ETC.

HATCHWAYS ON FREEBOARD AND SUPERSTRUCTURE DECKS.										
Description of Hatchway	N°1	N°2	N°3	N°4 & 5	Casing Top	Casing Top Bunkers	Fore Peak	Magazine aft	Gunners Escape	
Dimensions of Hatchway	29'3" x 22'	30' x 22'	29'3" x 17'6"	36'2" x 22'	15' x 5'9"	9'6" x 4'6"	3'6" x 2'6"	2'6" x 2'3"	2'2" x 2'6"	
COAMINGS	Height above Deck	30" ✓	30" ✓	30" ✓	30" ✓	3'3" x 3'4"	11" 5	30"	24	30"
	Thickness	.50 ✓	.50 ✓	.66 ✓	.50 ✓			.44	.44	.44
	Stiffeners	10 x 3 1/2 x .50 ✓	5 x 7 x .33 ✓	33 5	44	✓ ✓	✓ ✓	✓ ✓	✓ ✓	✓ ✓
	Brackets, Stays	3 ✓	3 ✓	2	3	✓	✓	✓	✓	✓
HATCH BEAMS	Number	5 ✓	5 ✓	2 + Bulkhead ✓	6 ✓					
	Spacing	4' - 10 1/2" ✓	5' - 8" ✓	6' - 5 1/2" ✓	5' - 2" ✓					
	Scantling and Sketch	18 1/2 x .36 ✓	17 x .35 ✓	16 x .34 ✓	17 x .35 ✓					
	Bearing Surface	9 x 7/8 Flats ✓ 3 ✓	9 x 7/8 Flats ✓ 3 ✓	13 1/4 x .33 Flats ✓ 3 ✓	9 x 7/8 Flats ✓ 3 ✓					
FORE AND AFTERS	Number									
	Spacing									
HATCH COVERS	Material	White	Pine							Steel w/ covers
	Thickness	2 1/2" ✓	2 1/2" ✓	3" ✓	2 1/2" ✓	2 1/2" ✓	2 1/2" ✓	2 1/2" ✓	2 1/2" ✓	.35 thick
	How fitted									secured by loggins
	Bearing Surface									
Spacing of Cleats	24 ✓	24 ✓	24 ✓	24 ✓	24 ✓	24 ✓	16 ✓			
Number of Tarpaulins	2	2	2	2	2	2	2			
<p>*Are wood fore and afters steel shod at all bearing surfaces? ✓</p> <p>Are battens and wedges efficient and in good condition? ✓</p> <p>Are tarpaulins in good condition and in accordance with rule requirements? ✓</p> <p>Are lashings provided in accordance with rule requirements? ✓ locking bars fitted ✓</p>										

Particulars of any special features:—

This vessel has been built of scantlings as per plans approved 17/3/41 in order to obtain a draft of 26'4" moulded. Deeper loading endorsement required. ✓

Endorsement at first survey and at surveys for renewal of Certificate:—

The fittings and appliances are in accordance with the particulars shown on this form (or as now modified) and are in good condition.



© 2020

Lloyd's Register Foundation