

Lloyd's Register of Shipping.

SURVEYS FOR FREEBOARD.

(CONDITIONS OF ASSIGNMENT.)

J.B. 142.

20 APR 1942

Ship's Name **'EMPIRE VICEROY'**Port of Survey **BARROW.**

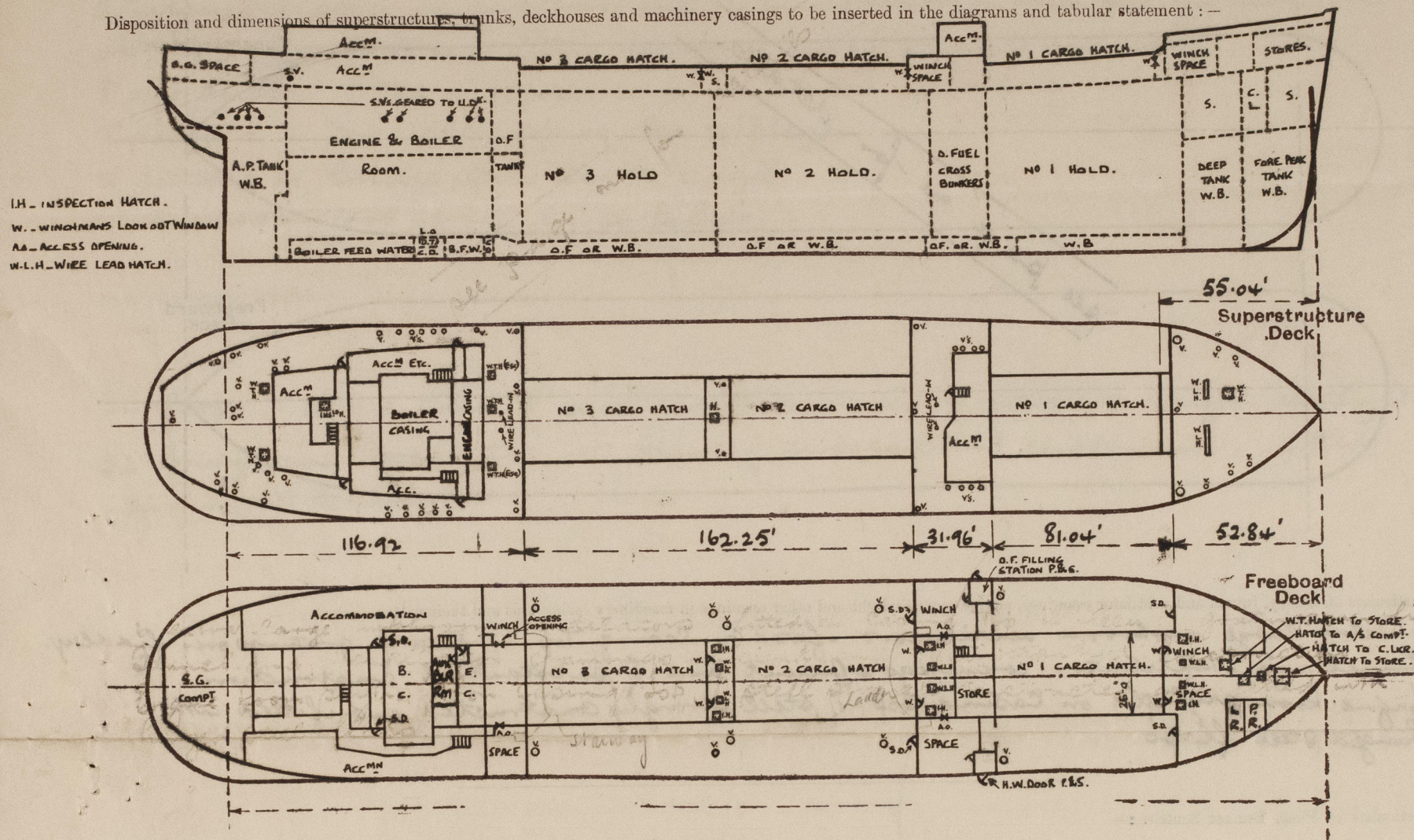
Official Number

169036

Surveyor's Signature

S. BowmanNationality and Port of Registry **BRITISH — BARROW.**Date of Survey **WHILE BUILDING.**

Disposition and dimensions of superstructures, trunks, deckhouses and machinery casings to be inserted in the diagrams and tabular statement:—



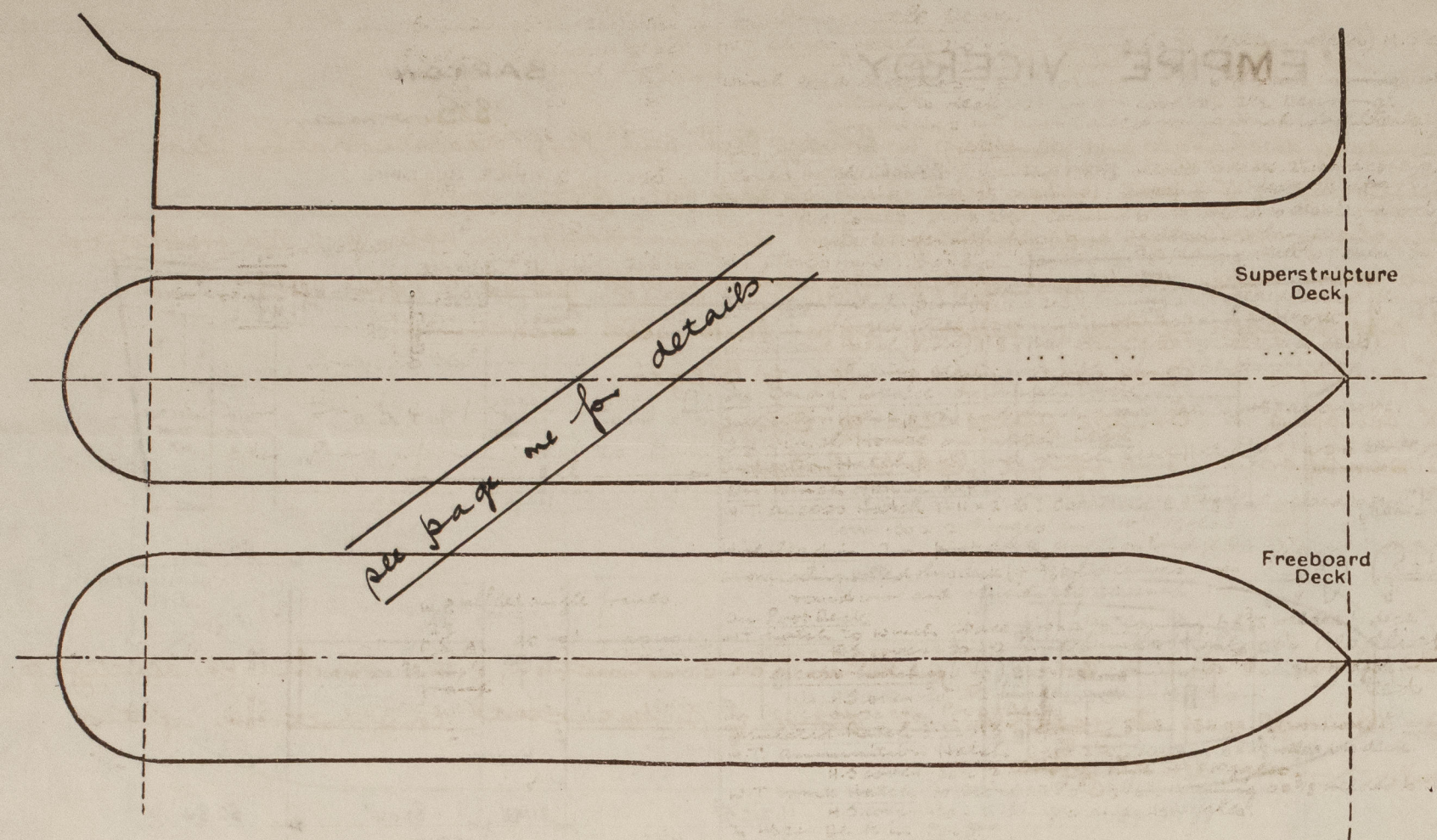
Particulars of Superstructures, Trunks, Casings, Deckhouses.								
	Coaming	Plating	Stiffeners	Spacing	End Attachments of Stiffeners	Size of Openings	Height of Sills	Height of Casings
Poop Bulkhead44	.44	8 x 3 1/2 x .48 B.A. 9 x 3 1/2 x .40 B.A.	22" 27"	welded T. & B.	✓	✓	7'-6" cas 8'-0" sides
Raised Quarter Deck Bulkhead ...	✓	✓	✓	✓	✓	✓	✓	✓
Bridge, After Bulkhead40	.40	5 x 3 x .32 O.A. 9 x 3 1/2 x .40 B.A.	31" 33"	welded T. & B.	2 @ 5'-0" x 2'-6"	18"	7'-6" cas 8'-0" sides
Bridge, Forward Bulkhead44	.44	8 x 3 1/2 x .40 B.A.	20" & 26"	welded T. & B.	✓	✓	0"
Forecastle Bulkhead44	.40	5 x 3 x .32 O.A.	27" & 31"	welded T. & B.	2 @ 5'-0" x 2'-6"	18"	8'-0"
Trunk, Aft ...	✓	✓	✓	✓	✓	✓	✓	✓
Trunk, Forward ...	✓	✓	✓	✓	✓	✓	✓	✓
Exposed Machinery Casings on Freeboard or Raised Quarter Decks ...	✓	✓	✓	✓	✓	✓	✓	✓
Exposed Machinery Casings on Superstructure Decks44	.34	5 x 3 x .34 O.A.	33"	but'd or welded at top. Cont. at star.	✓	✓	7'-9"
Machinery Casings within Superstructures not fitted with Class I Closing Appliances ...	✓	✓	✓	✓	✓	✓	✓	✓
Deckhouses on Flush Deck Ships ...	✓	✓	✓	✓	✓	✓	✓	✓

Particulars of Closing Appliances (state if capable of being manipulated from both sides).

Poop Bulkhead ...	no openings.
Raised Quarter Deck Bulkhead ...	✓
Bridge, After Bulkhead ...	steel hinged doors - m.B.S.
Bridge, Forward Bulkhead ...	no openings.
Forecastle Bulkhead ...	steel hinged doors - m.B.S.
Exposed Machinery Casings on Freeboard or Raised Quarter Decks ...	✓
Exposed Machinery Casings on Superstructure Decks ...	no openings.
Machinery Casings within Superstructures not fitted with Class I Closing Appliances ...	✓
Deckhouses on Flush Deck Ships ...	✓

PARTICULARS OF PROTECTION TO OPENINGS, ETC.

The following diagrams should be used to indicate the positions of cargo and coaling hatchways, gangway, cargo and coaling ports, ventilators, companionways, etc., which would affect the seaworthiness of the ship:—



Particulars of fiddle, funnel and ventilator coamings, engine room skylight and other openings in machinery casing tops and their means of closing:—

6 extra large mushroom ventilators fitted on casing top in lieu of gratings over fiddle, funnel and ventilator coamings efficient and of substantial construction. Engine room skylight on casing top, of steel strongly constructed and fitted with hinged steel flaps.

Particulars of Flush Bunker Scuttles:—

nil.

Particulars of Companionways:—

nil.

Particulars of Ventilators in exposed positions on freeboard and superstructure decks:—

and Ventilators

no.	Diam.	Coaming	space.
Forecastle Deck.			
2	18"	36"x40"	no 1 Hold
4	10"	36"x32"	Winch Compt. etc.
2	6"	36"x31"	hamp & Paint Rms.
Bridge Deck.			
5	9"	36"x32"	winch spaces
6	6"	36"x31"	O.F. Belling, Stores etc
Winch House Deck			
2	6"	36"x31"	Winch Compt.
Upper Deck			
10	18"	36"x40"	nos 1, 2 & 3 Holds.

no.	Diam.	Coaming	space.
Poof Deck.			
3	12"	32½"x34"	Passage
2	10"	32½"x36"	S.A. space
15	9"	32½"x32"	Accommodation etc.
11	6"	32½"x31"	Stores etc.

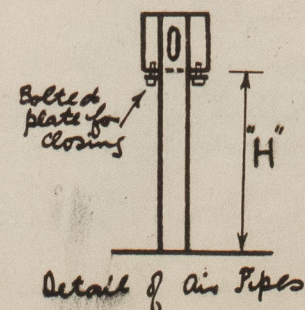
all coamings welded to deck in lieu of angle ring.

all ventilators built in accordance with the Society's rules and provided with wood plugs and canvas covers.

Particulars of Air Pipes in exposed positions on freeboard, raised quarter, or superstructure decks:—

no.	Diam.	Height "H"	space
Boiler Deck.			
1	3½"	18"	Boiler Tank W.B.
2	2½"	18"	Deep Tank W.B.
2	2½"	18"	no 1 O.B. Tank W.B.
Bridge Deck			
4	2½"	18"	no 2 O.B. Tank O.F. or W.B.
4	6"	-02-	O.F. Tanks with 4½"x3" brackets
Upper Deck.			
2	2½"	36"	no 1 A.B. Tank W.B.
4	3½"	36"	no 3 O.B. Tank W.B. or O.F.
2	3½"	36"	no 4 O.B. Tank W.B. or O.F.

no.	Diam.	Height "H"	space
Poof Deck			
2	2½"	18"	Cofferdam
2	7"	18"	no 4 O.B. Tank, O.F. Bunkers, O.F. settling, O.F., O.B. Tanks, 31 branches connected to 7" air pipes
2	2½"	18"	O.B. Tank F.W.
1	3"	18"	Cofferdam
2	2½"	18"	O.B. Tank F.W.
2	2½"	18"	F.W. Tank
2	2"	18"	Distilled Water Tank
1	3"	18"	aft Peak
1	4"	18"	Rudder Trunk.



Particulars of Gangway Cargo and Coaling Ports:—

Hinged W.T. Door to oil Fuel Belling Station (p. 5) Opening through shell 24" x 22" - 21' above upper deck, of substantial construction and fitted with 2 hinges and 2 strong backs with 4 hook bolts.

Particulars of Scuppers and Sanitary Discharge Pipes:—

Sanitary discharges and scuppers to Bridge Deck and Poof Deck Accommodation led overboard 2'6" above upper deck and fitted with storm valves. Sanitary discharges and scuppers to Poof Accommodation on upper deck led overboard 6'0" below upper deck and fitted with storm valves geared to upper deck. 3" pipe scuppers fitted on exposed upper deck led overboard. 2" scuppers in Forecastle space led to Bilges. 2" scuppers in Bridge space led to Bilges. 2" scuppers in Poof space led to Bilges.

Particulars of Side Scuttles:—

In Poof. 10" and 12" diam. of substantial construction, fitted with hinged deadlights. In Bridge and Forecastle - 9" diam. of substantial construction - fitted with hinged deadlights.

Vertical distance of Sill of lowest Side Scuttle above top of keel 40'0

Particulars of Guard Rails:—

Boiler Deck. Strong steel bulwark with efficient brackets spaced about 4'0" apart. Bridge Deck. Rails 3'3" above deck (2 rails) stanchions spaced about 4'6" apart. Poof Deck. Rails 3'3" above deck (3 rails) stanchions spaced about 5'0" apart.

Particulars of Gangways, Lifelines, etc.:—

Portable stanchions (with 1" wire) spaced about 7'0" apart - fitted on port side of nos 1, 2 and 3 hatch girders.

Particulars of Freeing Arrangements.

	Length of Bulwark	Height of Bulwark	Size of Freeing Ports	Number each side	Area each side	Rule area each side
After Well	162'-3"	5'6" aft 6'0" fwd straight line	4'7" x 9" - 4½" rad. at ends.	15	49.5	32.45
Forward Well	81'-0½"	6'0" fwd 6'6" aft straight line	5 @ 4'2" x 9" - 4½" rad. at ends. 1 @ 4'7" x 9" - 02-	6	18.3	16.2

State position of each freeing port ... After Well:—

(F. and A. position and height above deck edge) Forward Well:—

State whether the freeing ports are fitted with shutters, bars, or rails, and give particulars of such:— nil.

Additional area where sheer is less than standard. ✓

all freeing ports 12" above deck.

PARTICULARS OF PROTECTION TO OPENINGS, ETC.

HATCHWAYS ON FREEBOARD AND SUPERSTRUCTURE DECKS.

upper Deck.

Description of Hatchway	no 1	no 2	no 3	Small Hatches.
Dimensions of Hatchway	75'7 1/2" x 26'	75'2 1/2" x 26'	74'11 1/2" x 26'	on Doncastle Deck.
COAMINGS	Height above Deck ... 5'6" at ends Thickness50 Stiffeners50 Brackets, Stays ... } see sketch below	Height above Deck ... 5'0" ft. - 4'6" aft Thickness50 Stiffeners50 Brackets, Stays ... } see sketch below	Height above Deck ... 4'6" ft. - 4'6" aft Thickness50 Stiffeners50 Brackets, Stays ... } see sketch below	W.T. stores Hatch 2'0" x 2'6" Coaming 6 x 3/8 flat bar (welded) H. Steel W.T. covers - 2 hinges and 4 toggles Winch lead hatches - 6'4" x 10' - 6'8" x 10" Coaming .44 x .24 welded to deck - 2 1/2 wood covers - 2 1/2 bearing 2 tarpaulins out and laced round winch wire - cleats 24" apart.
HATCH BEAMS	Number ... 16 Spacing ... 4'-11" / 4'-5" Scantling and Sketch ... all welded 1" x 40 flat 24" x 60" 12" x 90" Bearing Surface ... 3/4"	Number ... 15 Spacing ... 4'-11" Scantling and Sketch ... 24" x 60" 24" x 60" Bearing Surface ... as no 1	Number ... 15 Spacing ... 4'-11" Scantling and Sketch ... 24" x 60" 24" x 60" Bearing Surface ... as no 1	In 3'0" space (upper Deck) stores Hatch 4'0" x 3'0" Coaming 9 x 3/8 welded to deck. 2 wood covers Hatch to C.H.K. 2'0" x 2'6" 2 1/2" bearing - 1 tarpaulin - cleats 24" apart. Hatch to A/p. Comp. 2'0" x 2'6" Coaming 6 x 3/8 welded to deck - flanged steel covers with hasp and padlock - 2 hinges. W.T. stores Hatch 3'0" x 3'0" Coaming 6 x 3/8 - hinged steel W.T. cover 30 2 hinges - 4 toggles. Inspection Hatch (p. + s.) 1'11" x 2'3" Coaming 4 x 3/8 welded to deck. flanged hinged steel cover 26" with hasp and padlock. Winch lead Hatch (p. + s.) 1'8" x 1'4" Coaming 3 x 3/8 welded to deck. sliding steel cover with pin on chain.
FORE AND AFTERS	Number ... Spacing ... Unsupported Lengths ... Scantling* and Sketch ... Bearing Surface ...	Number ... Spacing ... Unsupported Lengths ... Scantling* and Sketch ... Bearing Surface ...	Number ... Spacing ... Unsupported Lengths ... Scantling* and Sketch ... Bearing Surface ...	In Bridge space on upper Deck. Inspection Hatch (p. + s.) and Winch lead Hatch (p. + s.) as above. In Winch House on upper Deck. Inspection Hatch (p. + s.) and Winch lead Hatch (p. + s.) as above. On Winch House Top. W.T. access Hatch 1'11" x 2'6" Coaming 6 x 3/8 flat welded to deck. H. Steel covers 30 - 2 hinges and 4 toggles. Wire lead in. 2 on poop deck and 2 on Bridge Deck strong coding bolted thru deck (4-5/8 bolts) canvas cover laced round wire and efficiently secured :- On Poop Deck W.T. Hatch to Winch (space 2'0" x 2'6" Coaming 6 x 3/8 welded to deck H.S. cover 30 - 2 hinges and 4 toggles. W.T. escape hatches (p. + s.) 2'0" x 2'3" Coaming 6 x 3/8 welded to deck H.S. cover 30 - 2 hinges and 4 toggles. In Deck house on Poop Deck. Insulated Hatch 3'3" x 3'3" Coaming 3 x 3/8 36 ga. 1/2 wood cover 2 1/2 bearing W.T. ammunition Hatch 2'6" x 2'0" Coaming 6 x 3/8 welded to deck. H.S. cover 30 - 2 hinges and 4 toggles. W.T. Trunk Hatch to Store 2'0" x 2'6" Coaming 6 x 3/8 welded to deck. H.S. cover 30 - 2 hinges and 4 toggles. On Upper Deck in Poop. W.T. cordite Hatch 2'0" x 2'6" Coaming 6 x 3/8 welded to deck. steel hinged cover 30 - 2 hinges and 4 toggles.
HATCH COVERS	Material ... W.P. welded angle frames. Thickness ... 2 1/2 How fitted ... F. & A. Bearing Surface ... 3 1/2 angle frame	Material ... W.P. welded angle frames. Thickness ... 2 1/2 How fitted ... F. & A. Bearing Surface ... 3 1/2 angle frame	Material ... W.P. welded angle frames. Thickness ... 2 1/2 How fitted ... F. & A. Bearing Surface ... 3 1/2 angle frame	On Poop Deck W.T. Hatch to Winch (space 2'0" x 2'6" Coaming 6 x 3/8 welded to deck H.S. cover 30 - 2 hinges and 4 toggles. W.T. escape hatches (p. + s.) 2'0" x 2'3" Coaming 6 x 3/8 welded to deck H.S. cover 30 - 2 hinges and 4 toggles. In Deck house on Poop Deck. Insulated Hatch 3'3" x 3'3" Coaming 3 x 3/8 36 ga. 1/2 wood cover 2 1/2 bearing W.T. ammunition Hatch 2'6" x 2'0" Coaming 6 x 3/8 welded to deck. H.S. cover 30 - 2 hinges and 4 toggles. W.T. Trunk Hatch to Store 2'0" x 2'6" Coaming 6 x 3/8 welded to deck. H.S. cover 30 - 2 hinges and 4 toggles. On Upper Deck in Poop. W.T. cordite Hatch 2'0" x 2'6" Coaming 6 x 3/8 welded to deck. steel hinged cover 30 - 2 hinges and 4 toggles.
Spacing of Cleats	24"	24"	24"	
Number of Tarpaulins	2	2	2	
*Are wood fore and afters steel shod at all bearing surfaces? <input checked="" type="checkbox"/> Are battens and wedges efficient and in good condition? <input checked="" type="checkbox"/> Are tarpaulins in good condition and in accordance with rule requirements? <input checked="" type="checkbox"/> Are lashings provided in accordance with rule requirements? <input checked="" type="checkbox"/>				W.T. stores Hatch 2'0" x 2'6" Coaming 6 x 3/8 flat bar (welded) H. Steel W.T. covers - 2 hinges and 4 toggles Winch lead hatches - 6'4" x 10' - 6'8" x 10" Coaming .44 x .24 welded to deck - 2 1/2 wood covers - 2 1/2 bearing 2 tarpaulins out and laced round winch wire - cleats 24" apart.

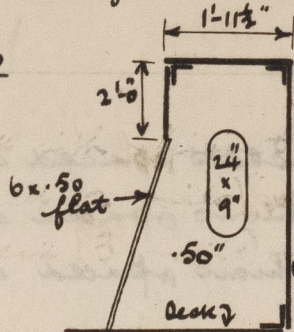
Locking bars fitted to forward hatchway

Particulars of any special features :-

Winchman's look out windows to hold at frames 81, 116, 162 marked "W" on sketch - 18" square. H. steel cover plates - all below level of hatch and 3'0" above deck to bottoms (p. + s.)

Bridge Front Recess 13'3" x 4'11" opening 10'3" x 6'10" / 4'8" high with H.S. plates 2'3" wide x 4'8" / 4'2" high - outboard.

Details of hatch side girders



3. and a. top angles 6 x 6 x .60
 Top plate 1'5 1/2" x 1"
 Vent. top plate 1"
 Brackets every second frame all welded
 R.50" hatch sides.

Endorsement at first survey and at surveys for renewal of Certificate :-

The fittings and appliances are in accordance with the particulars shown on this form (or as now modified) and are in good condition.



© 2021

Lloyd's Register Foundation