

Rpt. C.11.
STAR. OF. ALEXANDRIA
No 43661.

GOVT. COPY ISSUED

OWNERS' C.11 ISSUED 26 AUG 1953

4 MAY 1953

Index No. 44033
(For London Office only.)

Lloyd's Register of Shipping.

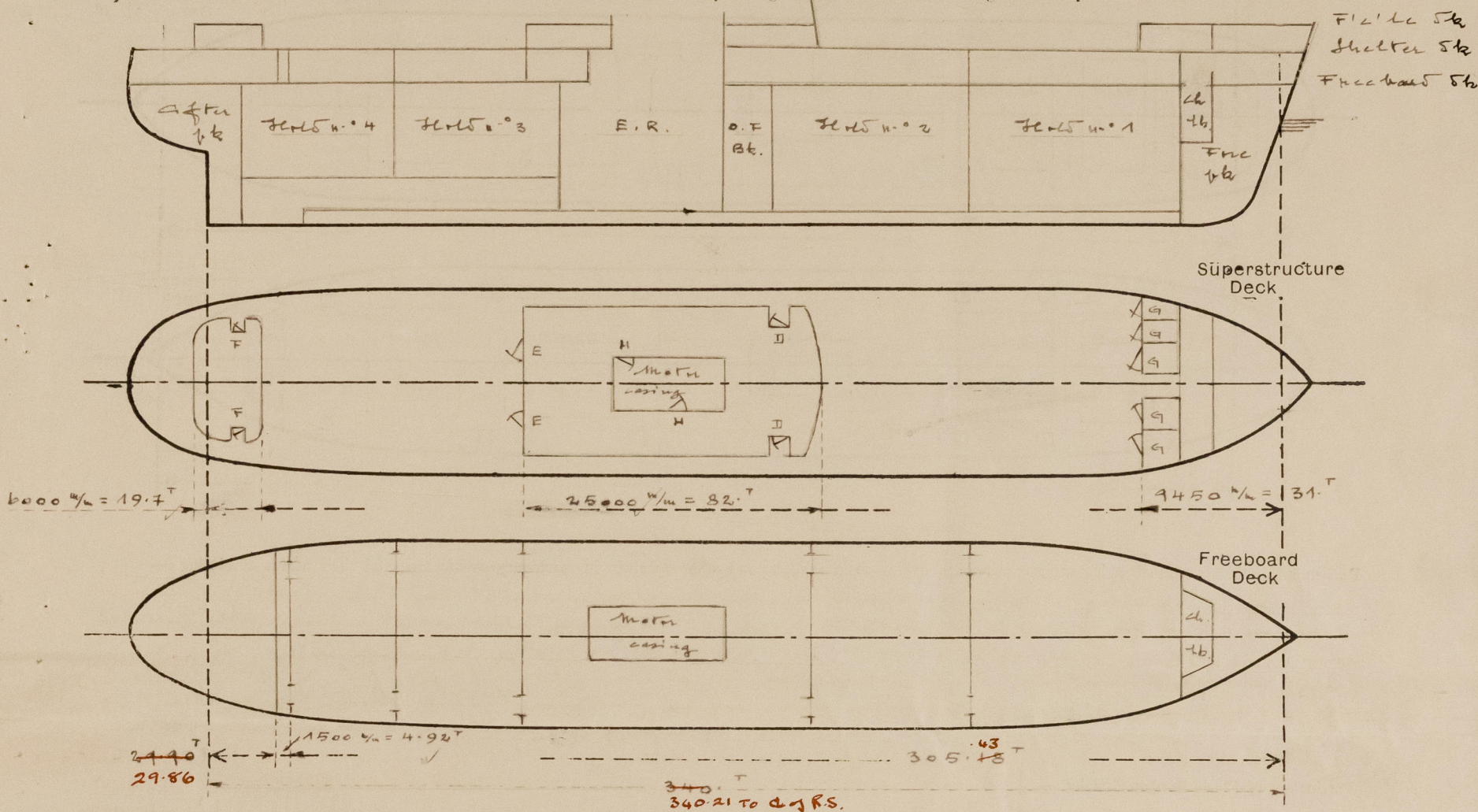
SURVEYS FOR FREEBOARD.

(CONDITIONS OF ASSIGNMENT.)

13814

Ship's Name EL NIL Port of Survey TRIESTE
Official Number 136 Surveyor's Signature Messa
Nationality and Port of Registry Egyptian - Alexandria Date of Survey Spring construction

Disposition and dimensions of superstructures, trunks, deckhouses and machinery casings to be inserted in the diagrams and tabular statement :-



Particulars of Superstructures, Trunks, Casings, Deckhouses.

	Coaming mm	Plating mm	Stiffeners mm	Spacing mm	End Attachments of Stiffeners	Size of Openings mm	Height of Sills mm	Height of Casings mm
Poop Bulkhead <i>between shelter & freeb. sk</i> ...	✓	6 ✓	L 70 x 50 - L ✓	700 ✓	none ✓	none ✓	✓	2850 ✓
Raised Quarter Deck Bulkhead ...	✓	✓	✓	✓	✓	✓	✓	✓
Bridge, After Bulkhead <i>between shelter & freeboard sk</i> ...	✓	6	L 100 x 65 - L ✓	610 ✓	none	2 tmmage sp. 1750 x 916 ✓	260 ✓	2850 ✓
Bridge, Forward Bulkhead ...	✓	✓	✓	✓	✓	✓	✓	✓
Forecastle Bulkhead... <i>on shelter sk</i> ...	8 ✓	6.5 ✓	L 65 x 50 - L ✓	610 ✓	top & bottom welds ✓	1 tmmage sp. 1750 x 1220 5 struts sp. 1750 x 600 ✓	260 ✓	2400 ✓
Trunk, Aft ...	✓	✓	✓	✓	✓	✓	✓	✓
Trunk, Forward ...	✓	✓	✓	✓	✓	✓	✓	✓
Exposed Machinery Casings on Free- board or Raised Quarter Decks ...	✓	✓	✓	✓	✓	✓	✓	✓
Exposed Machinery Casings on Super- structure Decks ...	✓	✓	✓	✓	✓	✓	✓	✓
Machinery Casings within Superstruc- tures not fitted with Class I Closing Appliances ...	8	6	L 80 x 60 - L ✓	750	continuous	2 struts sp. 1600 x 650 ✓	250	2400
Deckhouses on <i>EL NIL</i> Deck Ships ...	10	8	L 160 x 9 ✓	max 750	ends welded	2 struts sp. 1750 x 750 2 struts sp. 1750 x 880 ✓	460 ✓	2400
Poop house:	8	7	L 75 x 75 x 8	670	ends welded	2 struts sp. 1600 x 650 ✓	460	2400

Particulars of Closing Appliances (state if capable of being manipulated from both sides).

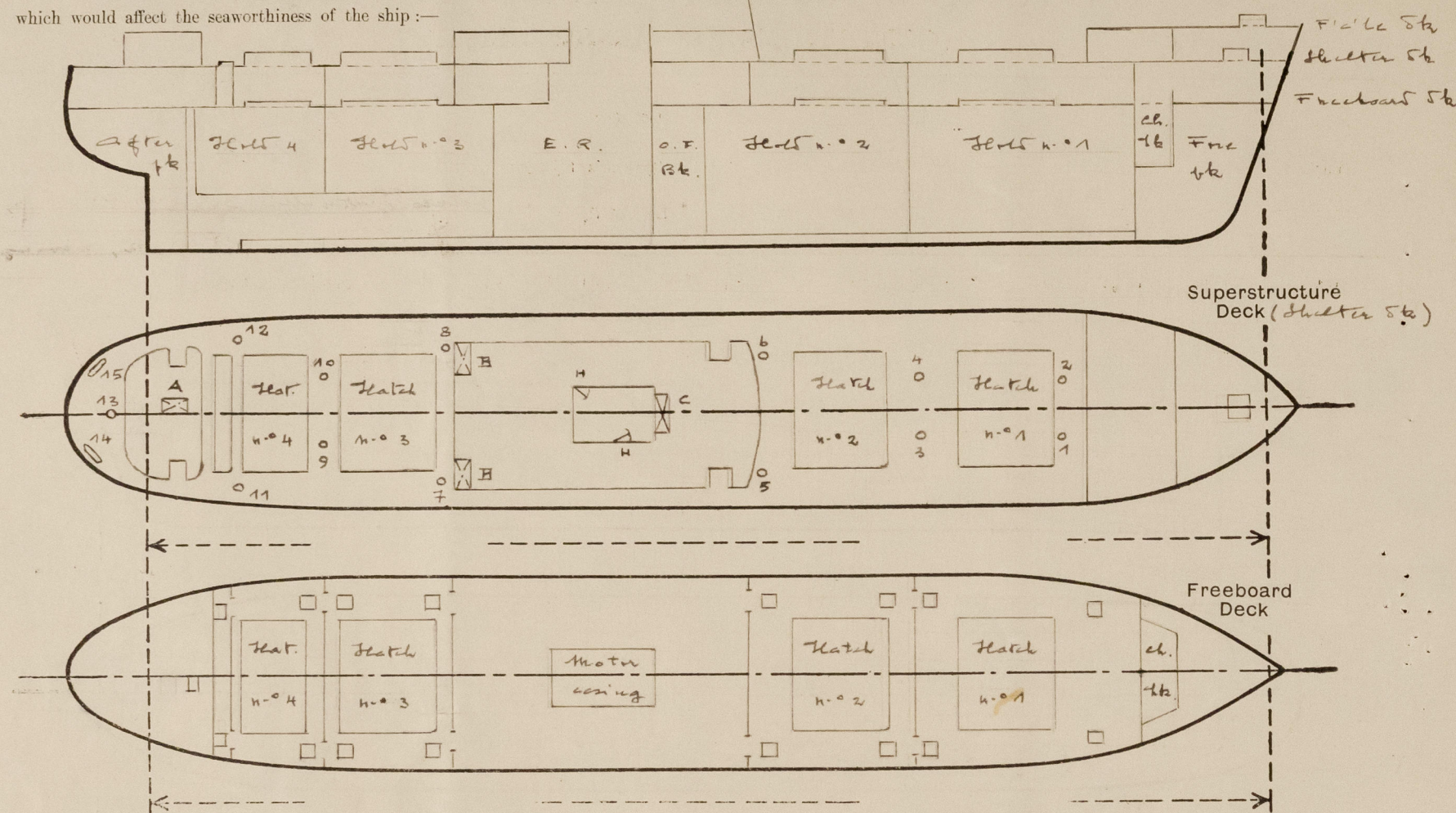
Poop Bulkhead ...	none ✓
Raised Quarter Deck Bulkhead ...	✓
Bridge, After Bulkhead ...	2 tmmage openings with portable plates with hookbolts not passing through bulkhead; ✓
Bridge, Forward Bulkhead ...	✓
Forecastle Bulkhead...	5 hinges steel w.t. 5mm operated both sides by clips, marked G; ✓
Exposed Machinery Casings on Free- board or Raised Quarter Decks ...	1 tmmage opening with portable plate & hookbolt not passing through bulkhead; ✓
Exposed Machinery Casings on Super- structure Decks ...	✓
Machinery Casings within Superstruc- tures not fitted with Class I Closing Appliances ...	2 steel hinges 5mm operated both sides by handle. For position see sketch above marked H. ✓
Deckhouses on <i>EL NIL</i> Deck Ships ...	was 5mm of strong construction operated both sides. For position see sketch above, marked I, D - E - F. ✓

5m 2.46. T

012096-012101-0214 1/2

PARTICULARS OF PROTECTION TO OPENINGS, ETC.

The following diagrams should be used to indicate the positions of cargo and coaling hatchways, gangway, cargo and coaling ports, ventilators, companionways, etc., which would affect the seaworthiness of the ship:-



Particulars of filley, funnel and ventilator coarings, engine room skylight and other openings in machinery casing tops and their means of closing:-

Machinery casing spanning over motor space 400 mm high over wheelhouse deck of strong construction - On top there is a portable skylight strongly constructed and secured by bolts. Funnel of strong construction stepped directly in motor casing top - Ventilator of motor room: is forward and 2 ft. stepped in motor casing top: $\phi = 800$ mm; height = 1500 mm; thickness = 6 mm - Outfalls: to motor room casing inside the midship house in shelter deck, shown in sketch marked "H" with steel cover, operating from both sides, size: 1600 x 650 mm, sill = 250 mm.

Particulars of Flush Bunker Scuttles:-

none

Particulars of Companionways:- From shelter deck to crew accommodation in freeboard deck, shown in sketch marked "A", size of opening in deck: 2250 x 1600, sill = 50 mm - All enclosed in the steel bulkhead - Companionways, 2 in n.o., from shelter deck to freeboard deck: shown in sketch marked "B", size of opening in deck: 1000 x 2100 mm - Companionway from shelter deck to freeboard deck, shown in sketch marked "C", size of opening in deck: 1000 x 2250 mm - All 3 companionways enclosed in the steel midship house with 50 mm sill.

Particulars of Ventilators in exposed positions on freeboard and superstructure decks:- size in mm:

Position no.	Diam.	Height	Thick.	Heating to	Position no.	Diam.	Height	Thick.	Heating to
1 shelter deck	460	915	10	hull & twist n.o. 1	13 shelter deck	250	915	8.5	steering room
2 do	50	50	50	50	14 do	50	460	4	50 gross neck
3 do	50	50	50	50	15 do	50	50	4	50 type
4 do	50	50	50	50	16 fore	250	915	8.5	fore store
5 do	50	50	50	50	17 do	50	50	50	50
6 do	50	50	50	50	18 do	200	50	3	50
7 do	50	50	50	50	19 do	50	50	50	50
8 do	50	50	50	50	20 do	180	50	7.5	50
9 do	50	50	50	50	21 do	50	50	50	50
10 do	50	50	50	50	22 do	50	50	50	50
11 do	50	50	50	50	23 do	50	50	50	50
12 do	50	50	50	50	24 do	50	50	50	50

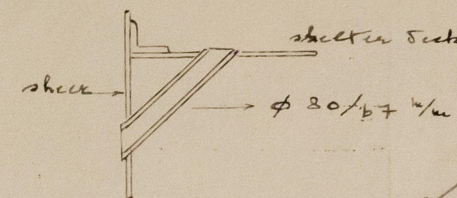
All ventilators are provided with steel covers and canvas covers. The position in shelter deck see sketch above, for position in fore see sketch pag. 4.

Particulars of Air Pipes in exposed positions on freeboard, raised quarter, or superstructure decks:- size in mm:

Particulars of All Types in exposed positions on foremast, mainmast, quarter, or foremast, etc.					
n.o.	Position	Diam.	Height	Details	Heating to
1	off in shelter str	30	460 ✓	gross neck with hinged weights cover	fore peak ✓
1	50	50	50	50	S.B. tank n.o. 1
2	50	50	50	50	50 2
3	50	50	50	50	50 5
4	50	50	50	50	50 7
5	50	70	50	50	50 8
6	50	80	50	50	50 9
7	50	50	50	50	after peak
8	50	50	50	50	pusher trunk

Particulars of Gangway Cargo and Coaling Ports:-

none



Particulars of Scuppers and Sanitary Discharge Pipes:-

Scuppers:- 11 scuppers each rise from shelter deck discharging overboard, as per sketch; 3 of which in way of midship br.; - scuppers of fore and houses in shelter deck discharging directly in shelter deck; - scuppers of fore and houses discharging to bilges, fitted with valves controlled from shelter deck, having indicators showing the valve closed or opened; - 2 scuppers in engine room, 5" diam., with floor valve controlled from shelter deck, having indicators showing the valve closed or opened.

Sanitary Discharge:-

Portside:- 4 sanitary discharges from midship house accommodation in shelter deck discharging overboard above maximum load line with automatic bronze valve controlled at shell (E.R.); - 1 sanitary discharge from accommodation located in shelter and freeboard deck 2 ft. discharging overboard above maximum load line with automatic bronze valve controlled from freeboard deck; Starboard side:- 5 sanitary discharges of midship house accommodation in shelter deck as said for portside; - 1 sanitary discharge of accommodation located in shelter and freeboard deck 2 ft. as said above for portside.

Particulars of Side Scuttles:-

in fore: 200 mm diameter in bronze fitted with hinged steel lights; 2 in n.o. in portside and 2 in n.o. in starboard side; in shelter deck: 200 mm diameter in bronze fitted with hinged steel lights; 13 in n.o. in portside and 10 in n.o. in starboard side; 5 in n.o. in portside aft and 5 in n.o. in starboard side aft.

Vertical distance of Sill of lowest Side Scuttle above top of keel:

7735 mm

Particulars of Guard Rails:-

in fore: 1100 mm high - 3 posts - standards spaced about 1400 mm apart; in shelter deck: bulwarks: 1100 mm high - strongly constructed with plates 6.5 mm thick, bulk angle bar on top (150 x 75 x 7.5 mm) and stays spaced 1500 mm apart - guard rails at aft end: as said above: in fore:-

Particulars of Gangways, Lifelines, etc.:-

none

Particulars of Freeing Arrangements.

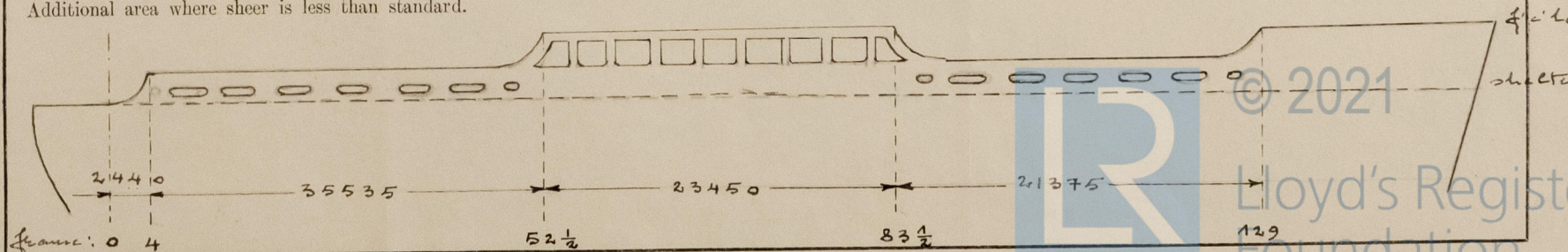
	Length of Bulwark mm	Height of Bulwark mm	Size of Freeing Ports mm	Number each side	Area each side cm ²	Rule area each side
After Well of midship house	35535	1100	1200 x 200 320 x 240	6 1	13884 600	2.161
Forward Well of midship house	21375	1100	1200 x 200 320 x 240	5 2	11570 1200	1.297

State position of each freeing port ... After Well:- see sketch below

(F. and A. position and height above deck edge) Forward Well:- 250 mm

State whether the freeing ports are fitted with shutters, bars, or rails, and give particulars of such:- 3 vertical bars

Additional area where sheer is less than standard.



012096-012101-02142/2

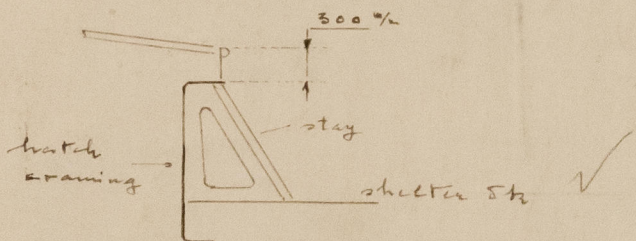
PARTICULARS OF PROTECTION TO OPENINGS, ETC.

HATCHWAYS ON FREEBOARD AND SUPERSTRUCTURE DECKS.																					
			to shelter deck					to freeboard deck													
Description of Hatchway	to file space	to file space	1	2	3	4	tonnage opening	1	2	3	4								
Dimensions of Hatchway	850	610	9100	9000	9000	9000	1500	9100	9000	9000	9000								
COAMINGS	Height above Deck	...	610	200	915	915	915	915	230	250	250	250	250								
	Thickness	Sides	10	6	11	11	11	11	11	11	11	11	11								
		Ends	10	6	11	11	11	11	11	11	11	11	11								
	Stiffeners	...	✓	✓	as per sketch below				✓	✓	✓	✓	✓								
	Brackets, Stays	...	✓	✓	3	3	3	3	✓	✓	✓	✓	✓								
HATCH BEAMS	Number	...			5	5	5	5		5	5	5	5								
	Spacing	...			1515	1500	1500	1500		1515	1500	1500	1500								
	Scantling and Sketch	...																			
	Bearing Surface	...			80	80	80	80		75	75	75	75								
FORE AND AFTERS	Number	...																			
	Spacing	...																			
	Unsupported Lengths	...																			
Scantling* and Sketch	...																				
Bearing Surface	...																				
HATCH COVERS	Material	...	steel	steel	pine				pine				pine								
	Thickness	...	10	6	60				60				65								
	How fitted	...	hinged	hinged	fore and aft				f. & a.				fore and aft								
	Bearing Surface	...	w.t. pack	wing	75				65				90								
Spacing of Cleats					580				Temporary				580						
Number of Tarpaulins					3				bolting arrang.				1						
*Are wood fore and afters steel shod at all bearing surfaces?													none								
Are battens and wedges efficient and in good condition?													yes								
Are tarpaulins in good condition and in accordance with rule requirements?													yes								
Are lashings provided in accordance with rule requirements?													yes								

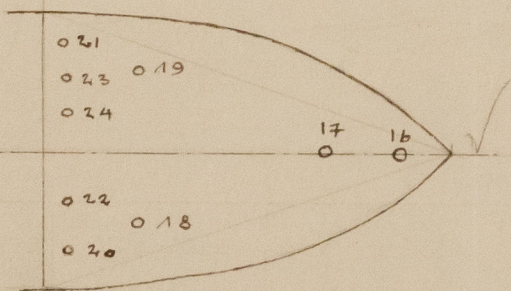
Particulars of any special features:-

Trimming hatches: size: 650 x 650 mm; coverings: 1 230 x 11 mm except coverings in tonnage well where are 460 x 11 mm. Hatches covered with pine covers 60 mm thick, tarpaulin, cleats spaced about 350 mm apart and bolting arrangements.

Cargo hatchway covering (shelter deck):



Position of ventilators on file deck:



Escape tunnel:

Entrance in freeboard deck aft with a steel door, operated from both sides; size of door: 1600 x 600 mm; sill = 300 mm.