

Rpt. C.11.

Lloyd's Register of Shipping.

SURVEYS FOR FREEBOARD.

(CONDITIONS OF ASSIGNMENT.)

Index No. _____
(For London Office only.)

Ship's Name "NAESS VENTURER"

Port of Survey Innoshima, Japan.

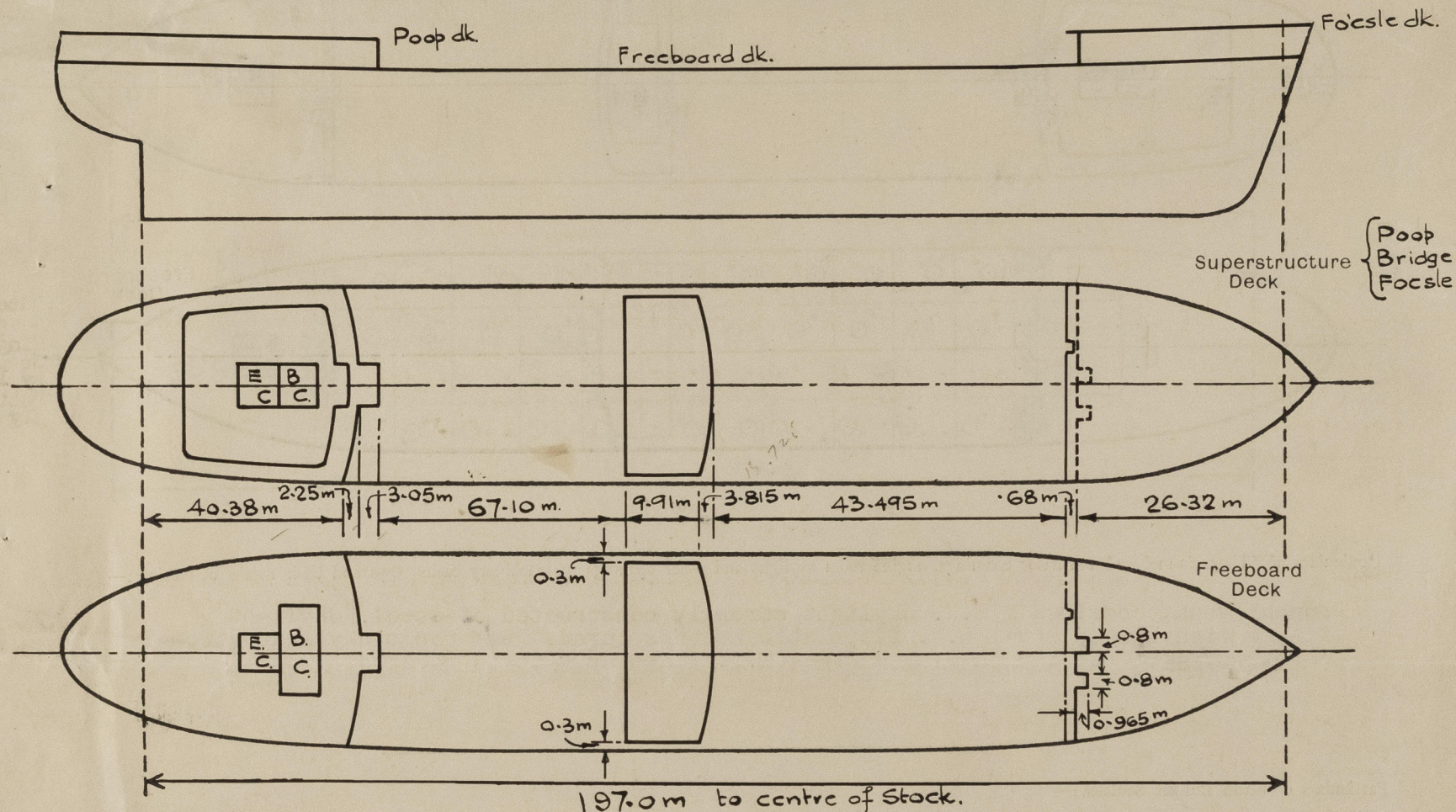
Official Number 799

Surveyor's Signature Wm. G. M. Culloch.

Nationality and Port of Registry Liberian. Monrovia.

Date of Survey May, 1956.

Disposition and dimensions of superstructures, trunks, deckhouses and machinery casings to be inserted in the diagrams and tabular statement:—



Particulars of Superstructures, Trunks, Casings, Deckhouses.

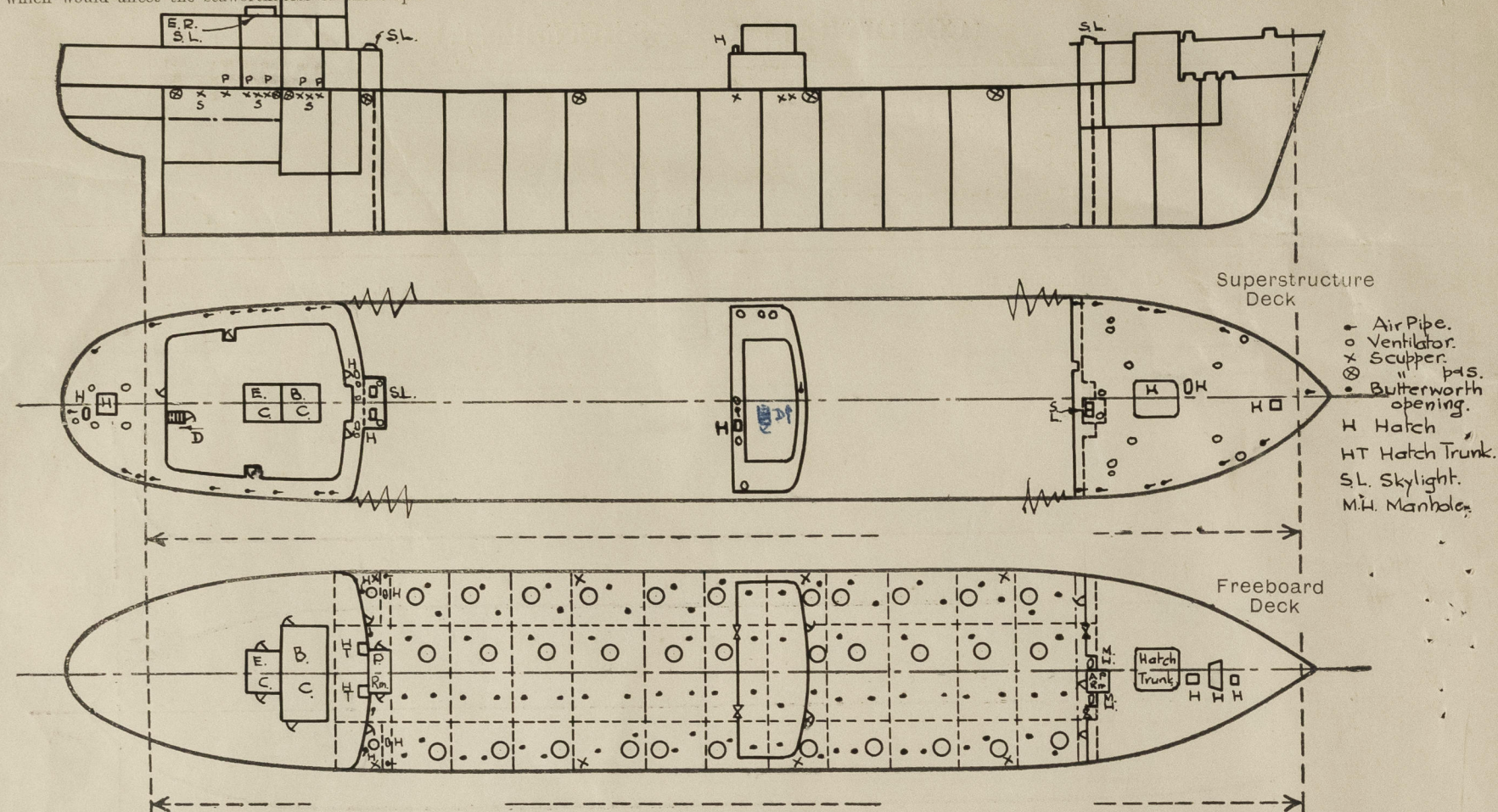
	Coaming	Plating	Stiffeners	Spacing	End Attachments of Stiffeners	Size of Openings	Height of Sills	Height of Casings
Poop Bulkhead ...	11.5 ✓	11.5 ✓	300x90x12/16 ✓	800 ✓	Welded ✓	4@1600x760	2 @ 457 ✓ 2 @ 610 ✓	2600 ✓
Raised Quarter Deck Bulkhead ...								
Bridge, After Bulkhead ...	8 ✓	8 ✓	100x75x7 ✓	800 ✓	Welded ✓	2@1450x915	460 ✓	2600 ✓
Bridge, Forward Bulkhead ...	11.5 ✓	11.5 ✓	300x90x10/15.5 ✓	800 ✓	Welded ✓	2@1600x760 (2@1600x760 2@1450x915 1@1600x760	380 ✓ 300 ✓ 460 ✓ 610 ✓	2600 ✓
Forecastle Bulkhead ...	8 ✓	8 ✓	125x10 F.B. ✓	577/800 ✓	Free ✓			2600 ✓
Trunk, Aft ...								
Trunk, Forward ...								
Exposed Machinery Casings on Freeboard or Raised Quarter Decks ...								
Exposed Machinery Casings on Superstructure Decks ...								
Machinery Casings within Superstructures not fitted with Class I Closing Appliances ...	8 ✓	6 ✓	90x8 F.B. ✓	800 ✓	Welded ✓	4@1660x760	270 ✓	2600 ✓
Deckhouses on Flush Deck Ships ...								

Particulars of Closing Appliances (state if capable of being manipulated from both sides).

Poop Bulkhead ...	Hinged Steel W.T. and Semi W.T. doors, capable of being manipulated from both sides. ✓
Raised Quarter Deck Bulkhead ...	
Bridge, After Bulkhead ...	Shifting boards in welded channels. ✓
Bridge, Forward Bulkhead ...	Hinged steel W.T. doors, capable of being manipulated from both sides. ✓
Forecastle Bulkhead ...	Hinged steel W.T. and Semi-W.T. doors capable of being manipulated from both sides. ✓
Exposed Machinery Casings on Freeboard or Raised Quarter Decks ...	Shifting boards in welded channels. ✓
Exposed Machinery Casings on Superstructure Decks ...	-
Machinery Casings within Superstructures not fitted with Class I Closing Appliances ...	Hinged steel doors capable of being manipulated from both sides. ✓
Deckhouses on Flush Deck Ships ...	-

PARTICULARS OF PROTECTION TO OPENINGS, ETC.

The following diagrams should be used to indicate the positions of cargo and coaling hatchways, gangway, cargo and coaling ports, ventilators, companionways, etc., which would affect the seaworthiness of the ship:—



Particulars of fiddle, funnel and ventilator coamings, engine room skylight and other openings in machinery casing tops and their means of closing:—

Funnel, vent., coamings & E.R. skylight strongly constructed of steel. Skylight fitted with hinged steel W.T. flaps able to be secured. Pump rooms skylights strongly constructed of steel with hinged steel W.T. flaps able to be secured.

Particulars of Flush Bunker Scuttles:—

None.

Particulars of Companionways:—

Companionway in Poop enclosed in strong steel deckhouse on Poop deck; hinged steel semi-W.T. doors, 1600 x 760, 457mm sill. Companionway in Bridge enclosed in strong steel deckhouse on Bridge deck, hinged steel semi-W.T. doors, 1600 x 760 and 457 mm sill.

Particulars of Ventilators in exposed positions on freeboard and superstructure decks:—

Focsle dk.
4-450mm dia. x 10mm thick - 915mm high. Mushroom vents fitted with screw down tops.
4-350mm dia. x 9mm thick - 915mm high. Cowl-head vents provided with wood plugs and canvas covers.
4-150mm dia. x 8mm thick - 915mm high.
Bridge dk.
2-350mm dia. x 9mm thick - 760mm high. Fans on Boat deck enclosed in strongly constructed W.T. steel casing.
4-150mm dia. x 8mm thick - 760mm high.
Poop dk.
2-600mm dia. x 10mm thick - 760mm high.
5-350mm dia. x 9mm thick - 760mm high.
3-150mm dia. x 9mm thick - 760mm high.

Particulars of Air Pipes in exposed positions on freeboard, raised quarter, or superstructure decks:—

Focsle deck
10-130mm dia. x 457mm high. Air pipes to Oil fuel tanks and cofferdams fitted with wire gauze and canvas covers.
2-50mm dia. x 457mm high. Other air pipes fitted with hinged steel W.T. flap.
Bridge deck
1-38mm dia. x 457mm high.
1-76mm dia. x 457mm high.
Upper deck
2-50mm dia. x 2286mm high efficiently stayed.
4-203mm dia. x 2286mm high.
Poop Deck
10-64mm dia. x 457mm high.
1-76mm dia. x 457mm high.
1-89mm dia. x 457mm high.
6-51mm dia. x 457mm high.

Particulars of Gangway Cargo and Coaling Ports:—

None.

Particulars of Scuppers and Sanitary Discharge Pipes:—

4-25m/m dia. scuppers from Forecastle space led to freeboard deck, with screwed plug.
2-25m/m dia. " " Bridge " " " " " "
5-80m/m dia. discharges from Poop space led overboard below freeboard deck, fitted with bronze automatic non-return valve.
5-100mm dia. " " " " " " " "
2-130mm dia. " " " " " " " "
2-160mm dia. discharges from Bridge space led overboard below freeboard deck, with bronze automatic non-return valve.
3-100mm dia. " " " " " " " "
2-160mm dia. " " " " " " " "
8-100mm dia. scuppers on Upper deck led through ships side by cast steel bends.

Particulars of Side Scuttles:—

Bronze side scuttles of substantial construction and fitted with M.C.I. deadlights in poop and bridge sides.

Vertical distance of Sill of lowest Side Scuttle above top of keel

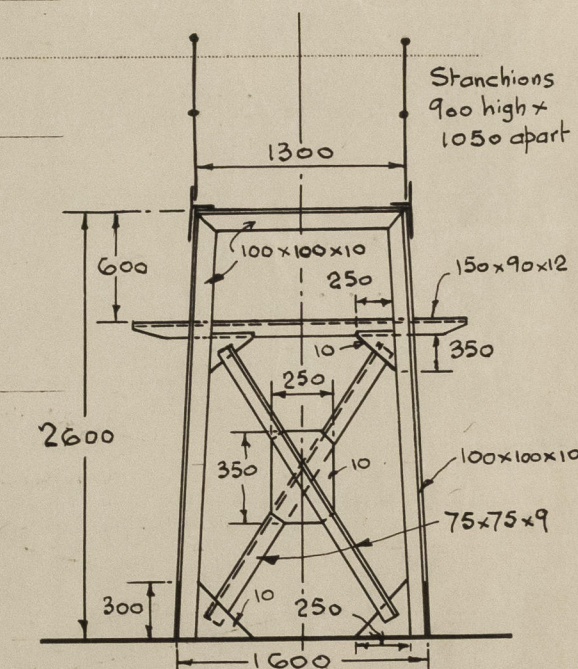
None below freeboard deck.

Particulars of Guard Rails:—

Focsle deck. }
Upper deck. } 3 guard rails with stanchions 1000 m/m high
Poop deck. } and 1500mm apart.

Particulars of Gangways, Lifelines, etc.:—

Poop to Bridge: F. & A. cross bracing at every 4th bay. F. & A. spacing of gangway supports is 3.05M.
Bridge to Focsle: F. & A. cross bracing at every 3rd bay. F. & A. spacing of gangway supports is 2.475M.



Particulars of Freeing Arrangements.

	Length of Bulwark	Height of Bulwark	Size of Freeing Ports	Number each side	Area each side	Rule area each side
After Well ...			Open Rails.			
Forward Well ...						

State position of each freeing port ... { After Well:—
(F. and A. position and height above deck edge) { Forward Well:—

State whether the freeing ports are fitted with shutters, bars, or rails, and give particulars of such:—

Additional area where sheer is less than standard.

PARTICULARS OF PROTECTION TO OPENINGS, ETC.

HATCHWAYS ON FREEBOARD AND SUPERSTRUCTURE DECKS.											
Freeboard Deck											
Poop Dk.											
Description of Hatchway	WT to Store	W.T. to	O.T.M.H	O.T. to C.A	O.T. to	W.T. to	W.T. to	W.T. (trunk)	O.T. to	W.T. to	
Dimensions of Hatchway	4 Cargo Sp.	Chain Lkn.	to Ford c/m.	to E.O. tanks.	Aft c/m.	to 'tw. dk. store	Rope Store	to Cargo Sp.	F.O.S.T.	Prov. Store.	
COAMINGS	2 at 762x660	2000x760	2 at 584x381	35 at 914 dia.	2 at 610x508	762x762	700x500	4760x4800	610x508	1830x1570	
Height above Deck	230 ✓	350 ✓		760 ✓	260 ✓	610 ✓	610 ✓	610 ✓	457 ✓	760 ✓	
Thickness	11 ✓	11 ✓		13 ✓	13 ✓	11 ✓	11 ✓	11 ✓	13 ✓	12 ✓	
Stiffeners	-	-		-	-	-	60x30	180x9.5BP	-	-	
Brackets, Stays	-	-		-	-	-	H.R.B.	300x11 plate	-	-	
HATCH BEAMS								round top edge of coaming			
Number											
Spacing											
Scantling and Sketch											
Bearing Surface											
FORE AND AFTERS											
Number											
Spacing											
Unsupported Lengths											
Scantling* and Sketch											
Bearing Surface											
HATCH COVERS	Steel 9	Steel 4.5	Steel 12	Steel 13	Steel 13	Steel 9	Steel 9	Steel 10	Steel 13	Steel 9	
Thickness	9	4.5	12	13	13	9	9	10	13	9	
How fitted	Hinged	Hinged	Secured	Convex Type	Hinged	Hinged	Hinged	Secured	Hinged	Hinged	
Bearing Surface	Secured by 6	Secured by 8	by 24	Rotating Secured by 2	Secured by 6	Secured by 6	Secured by 4	Secured by 36	Secured by 6	Secured by 10	
Spacing of Cleats	Butterfly	Butterfly	7/8"	Butterfly	Tumble	Butterfly	Butterfly	Butterfly	Butterfly	Tumble	
Number of Tarpaulins	Nuts	Nuts	bolts.	fly Nuts	bolts	fly Nuts	Nuts	fly Nuts	bolts	fly Nuts.	

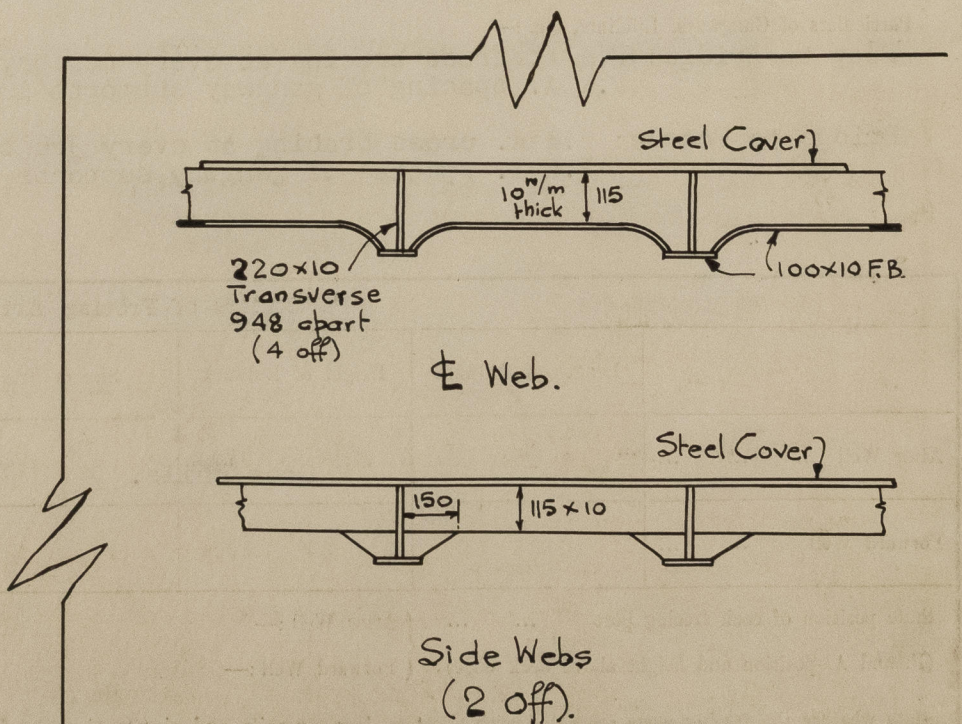
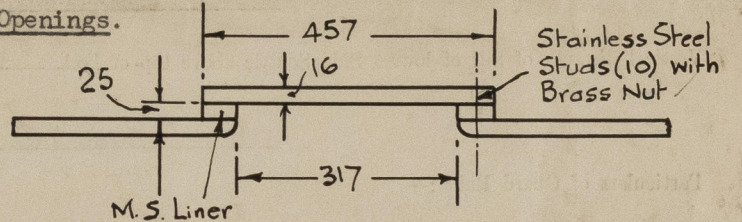
*Are wood fore and afters steel shod at all bearing surfaces?
 Are battens and wedges efficient and in good condition?
 Are tarpaulins in good condition and in accordance with rule requirements?
 Are lashings provided in accordance with rule requirements?

Particulars of any special features:—

Hatchways (Contd).	
Poop Dk.	Bridge Dk.
W.T. to Rope Store	W.T. to Elect. Pump Rm. Amidships.
700x500	550x550
457	457
) 11) 11
) 60x30H.R.B.	-
) round top edge of coaming	-
-	-
-	-
Steel 9	Steel 9
Hinged	Hinged
Secured by 4 Butterfly Nuts.	Secured by 4 Butterfly Nuts.

Butterworth Openings.

77 Off.



Stiffening of Cover for Dry Cargo Hold Hatch.