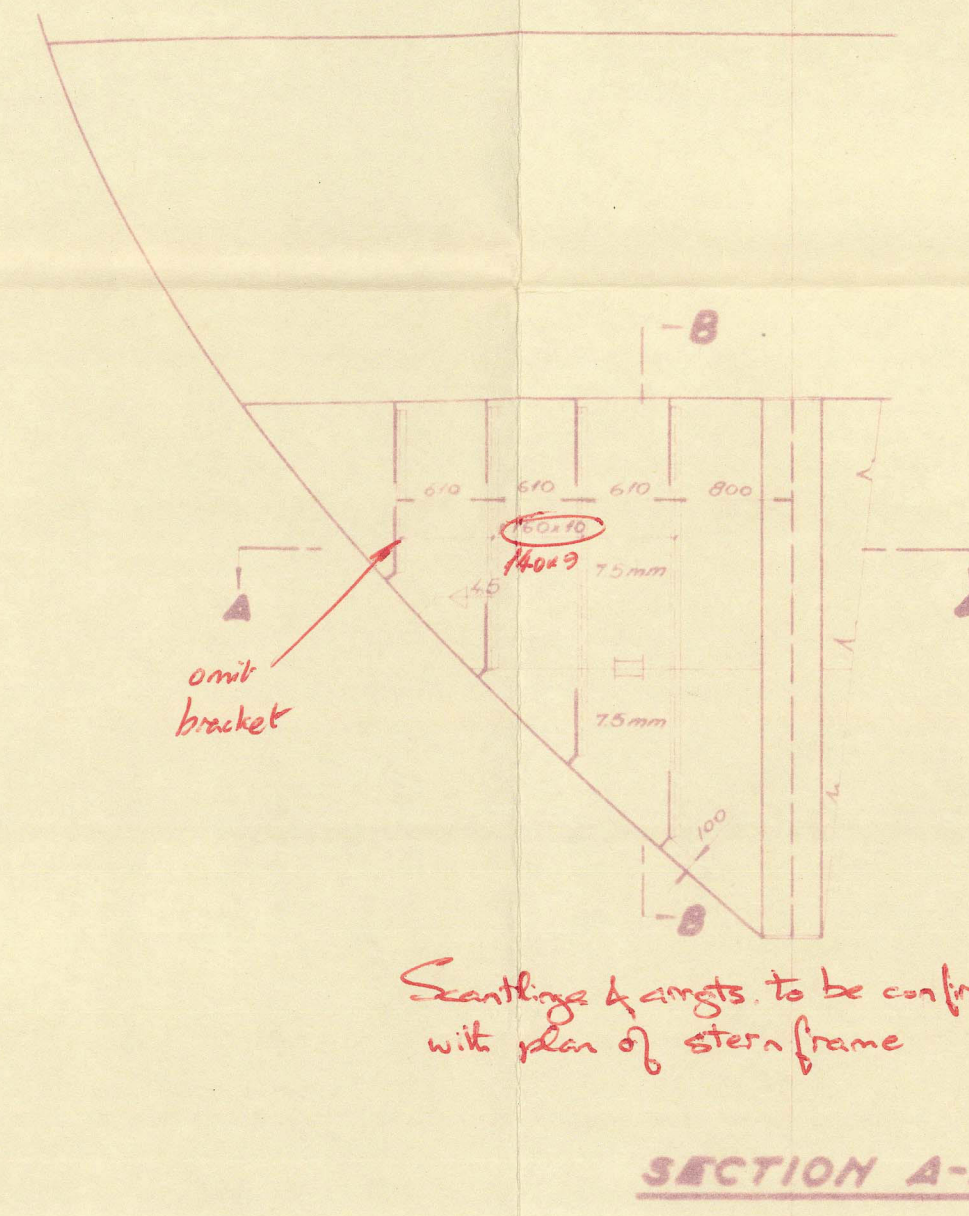
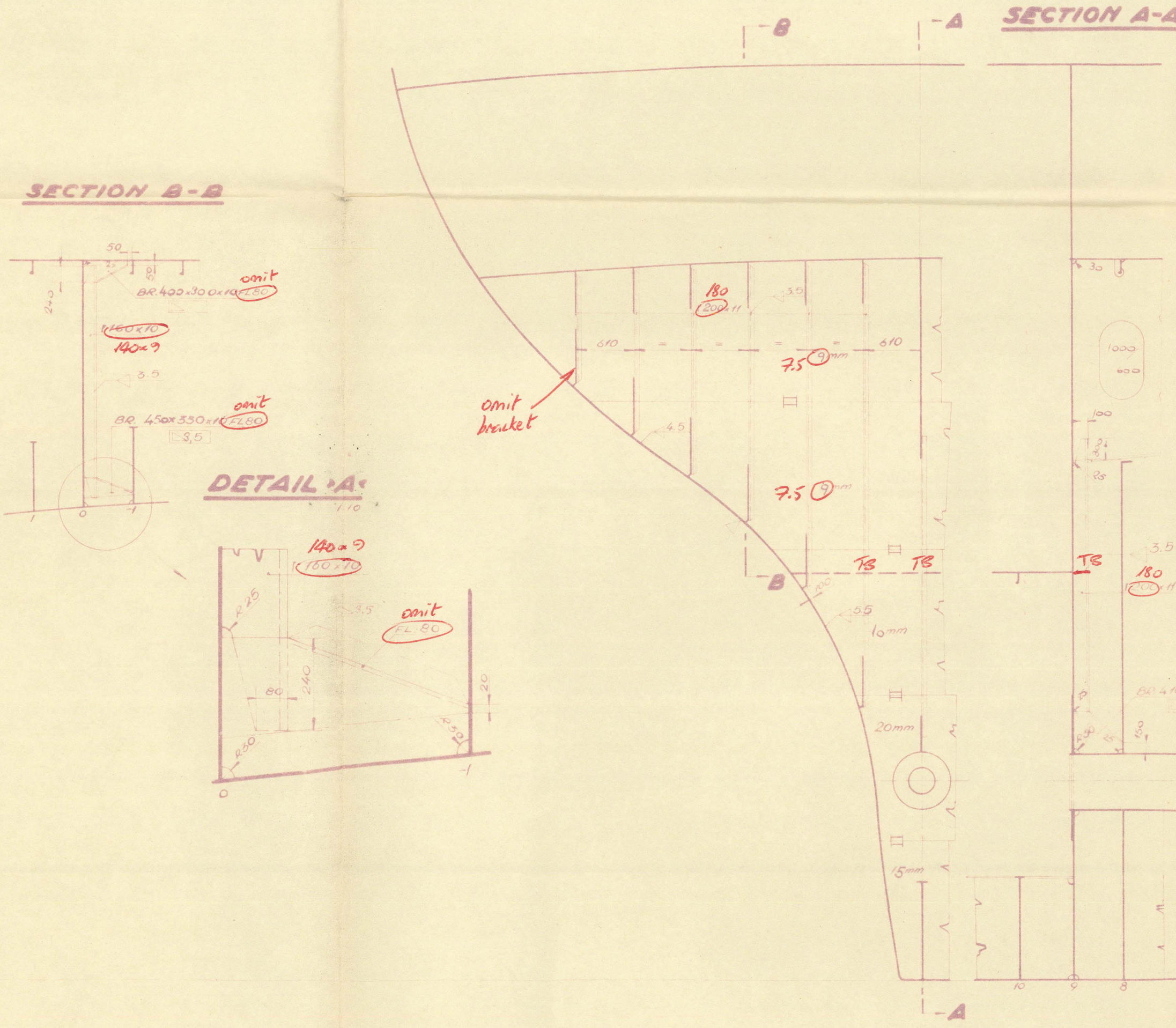


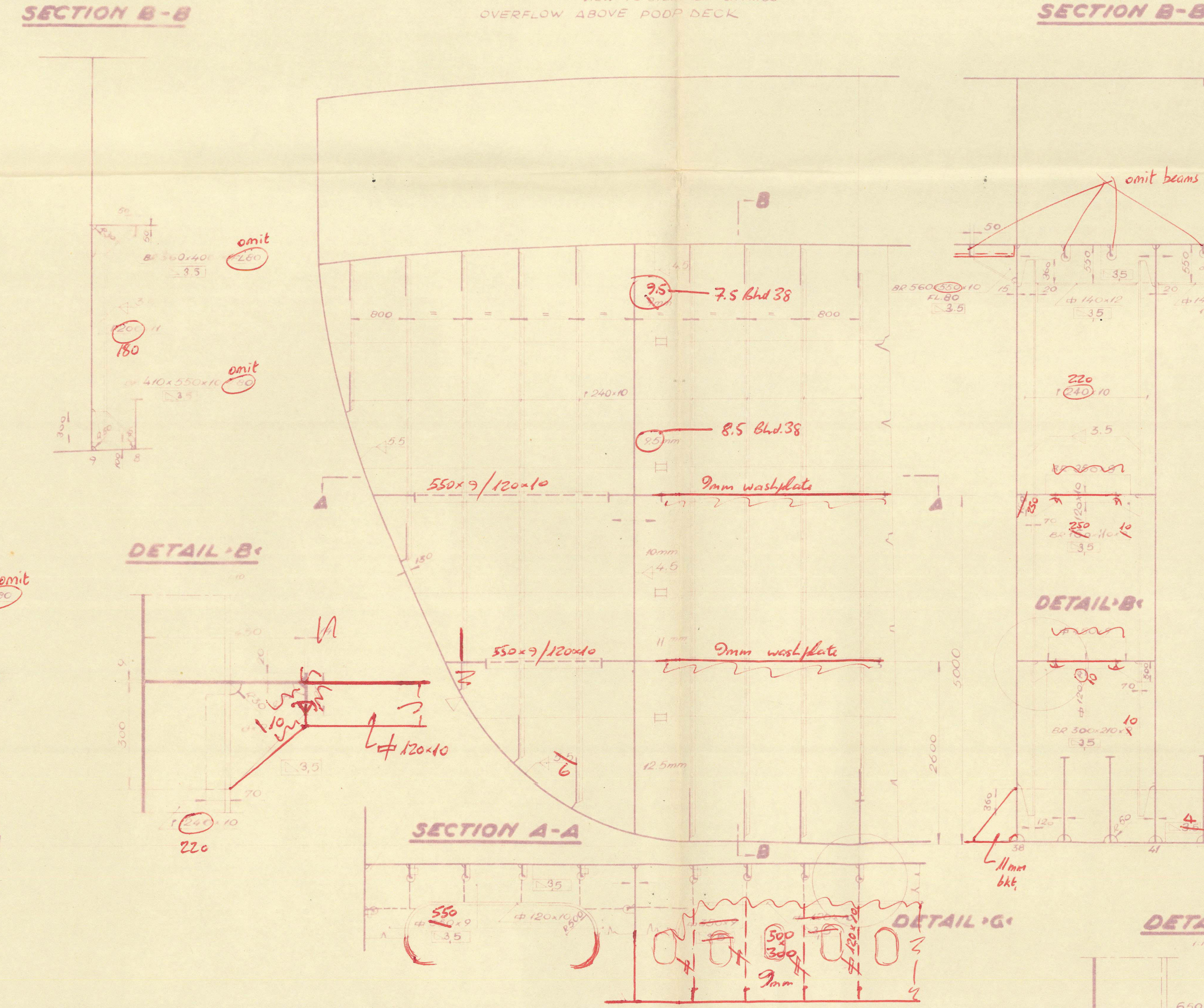
W.T. BULKHEAD ON FR-0
OVERFLOW ABOVE POOP DECK



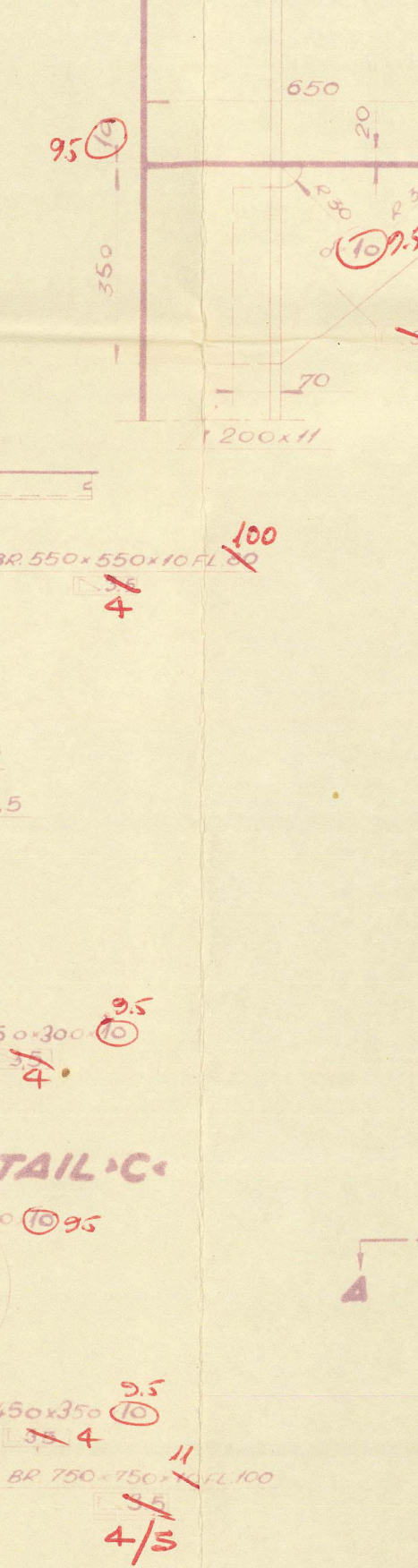
W.T. BULKHEAD ON FR-9
OVERFLOW ABOVE POOP DECK



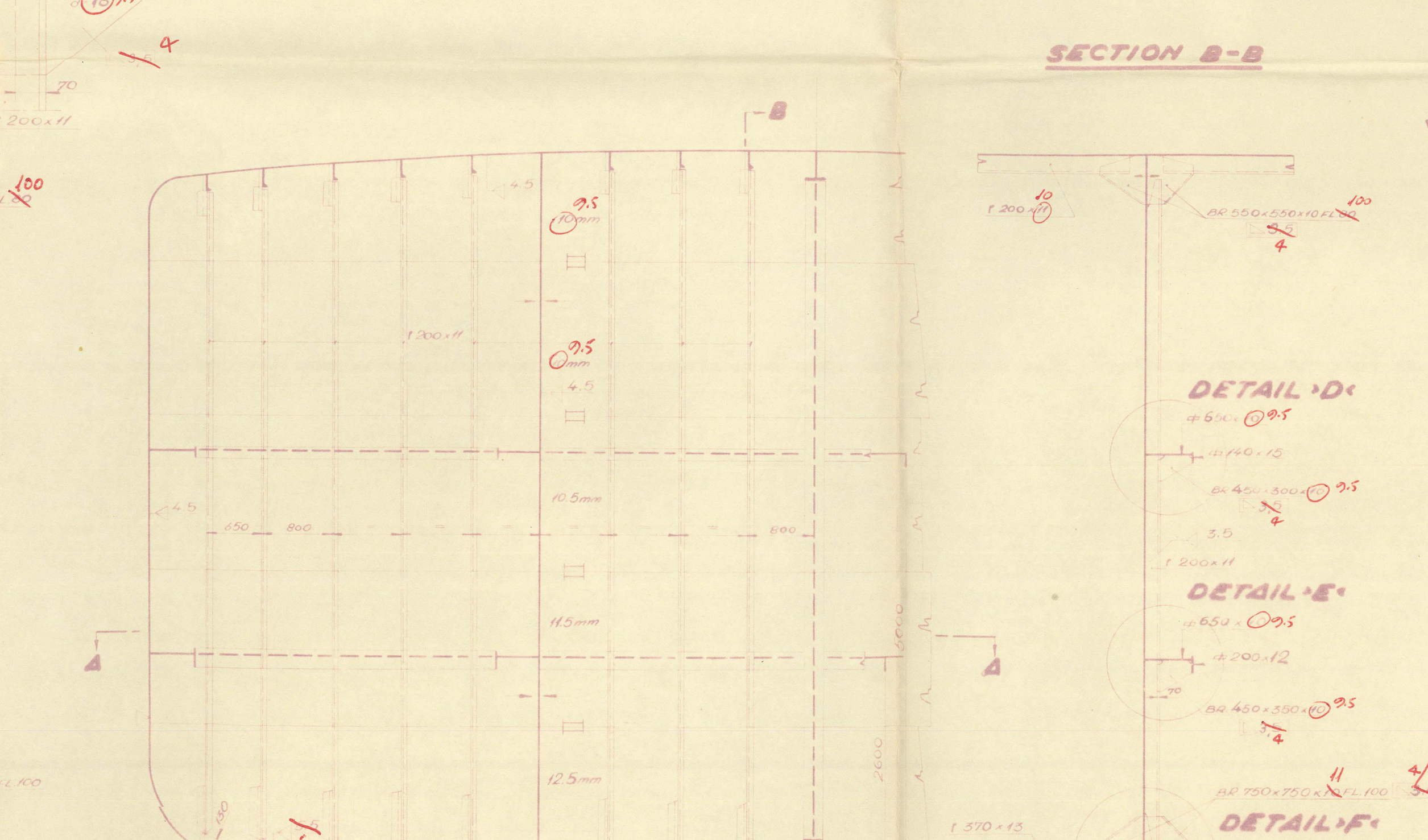
O.T. BULKHEAD ON FR-38 & 41
VIEW TO STEER AND OFFICE
OVERFLOW ABOVE POOP DECK



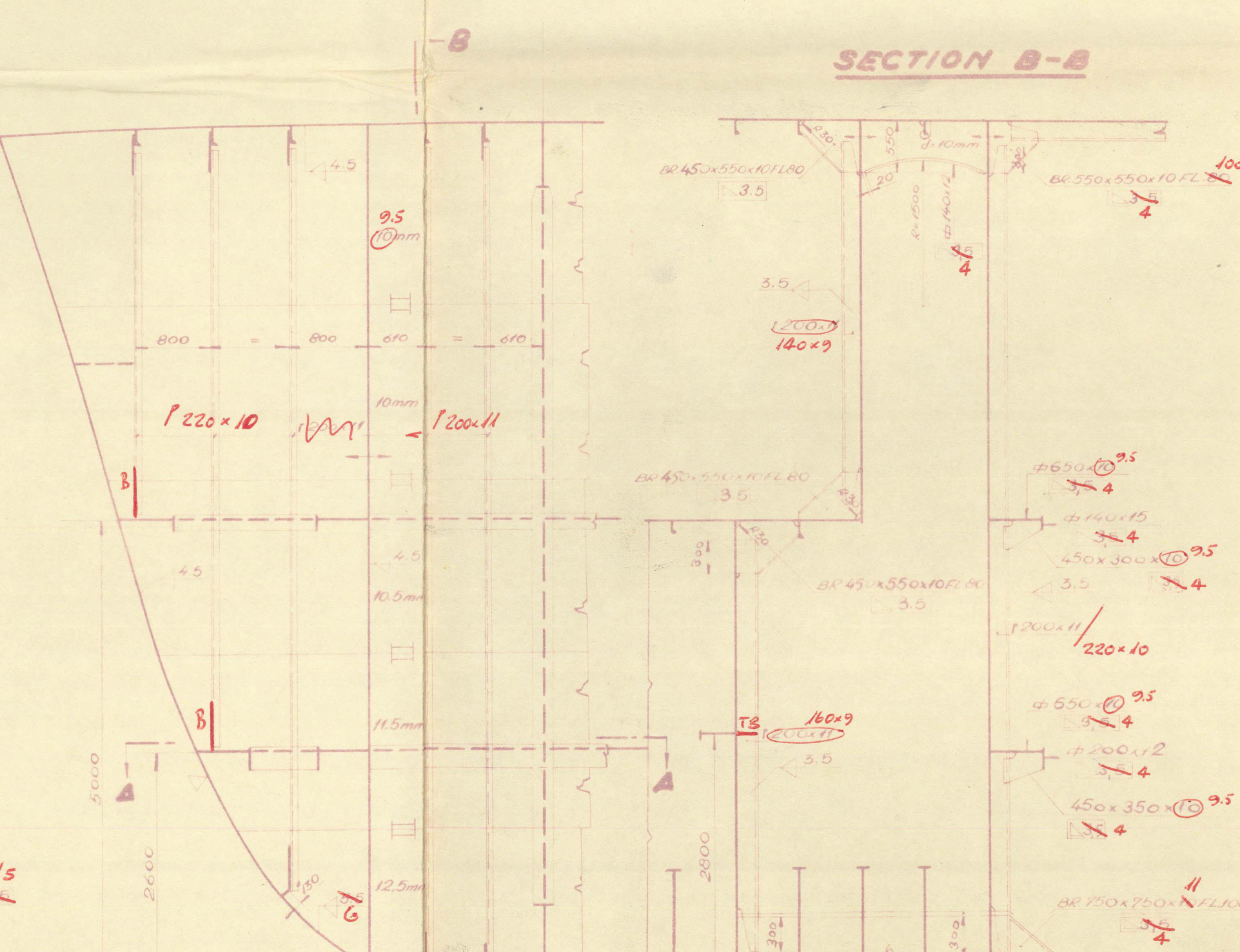
DETAIL C



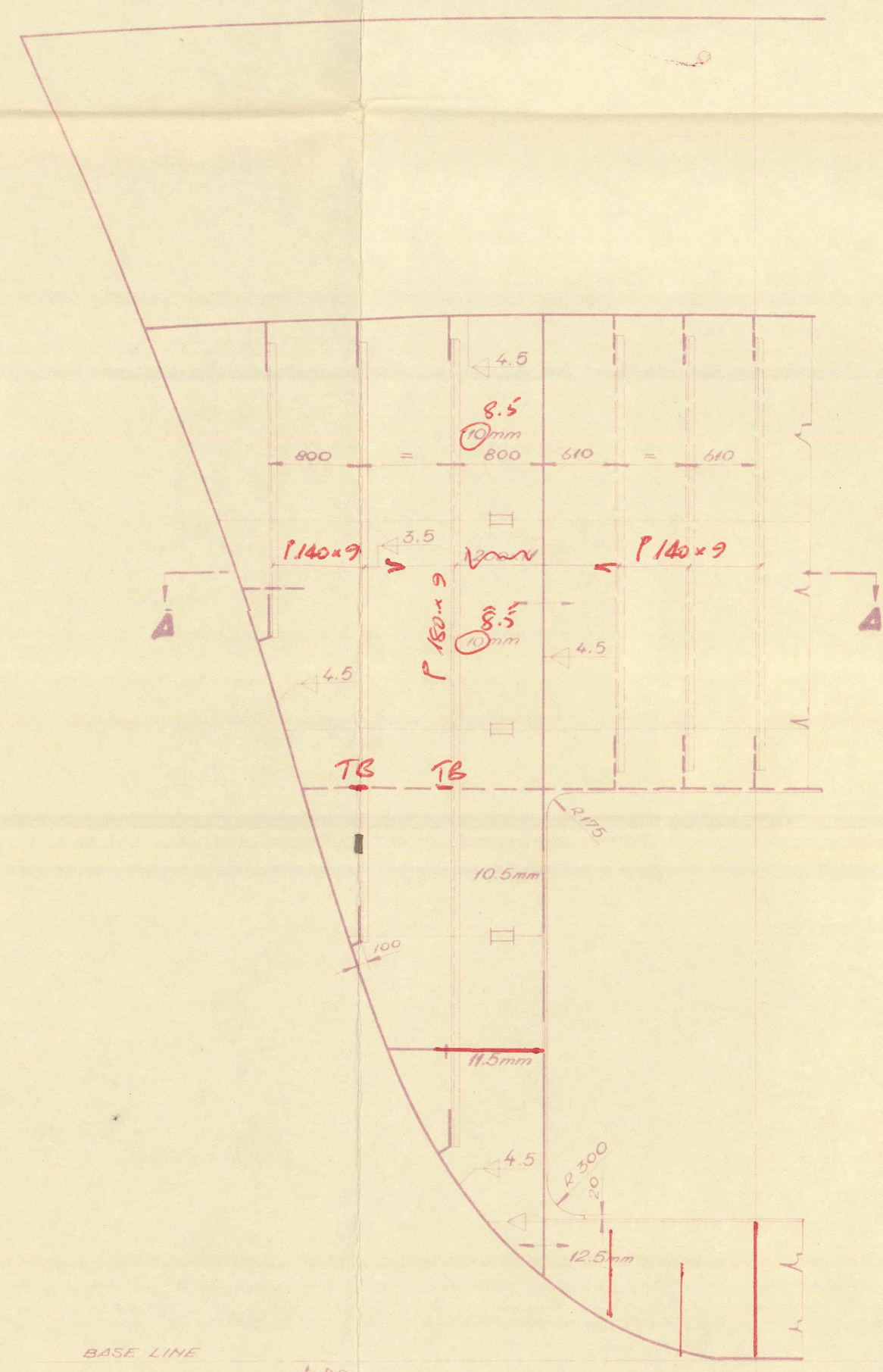
O.T. BULKHEAD ON FR-90
& BHD ON FR-43, 53, 75, 105, 122



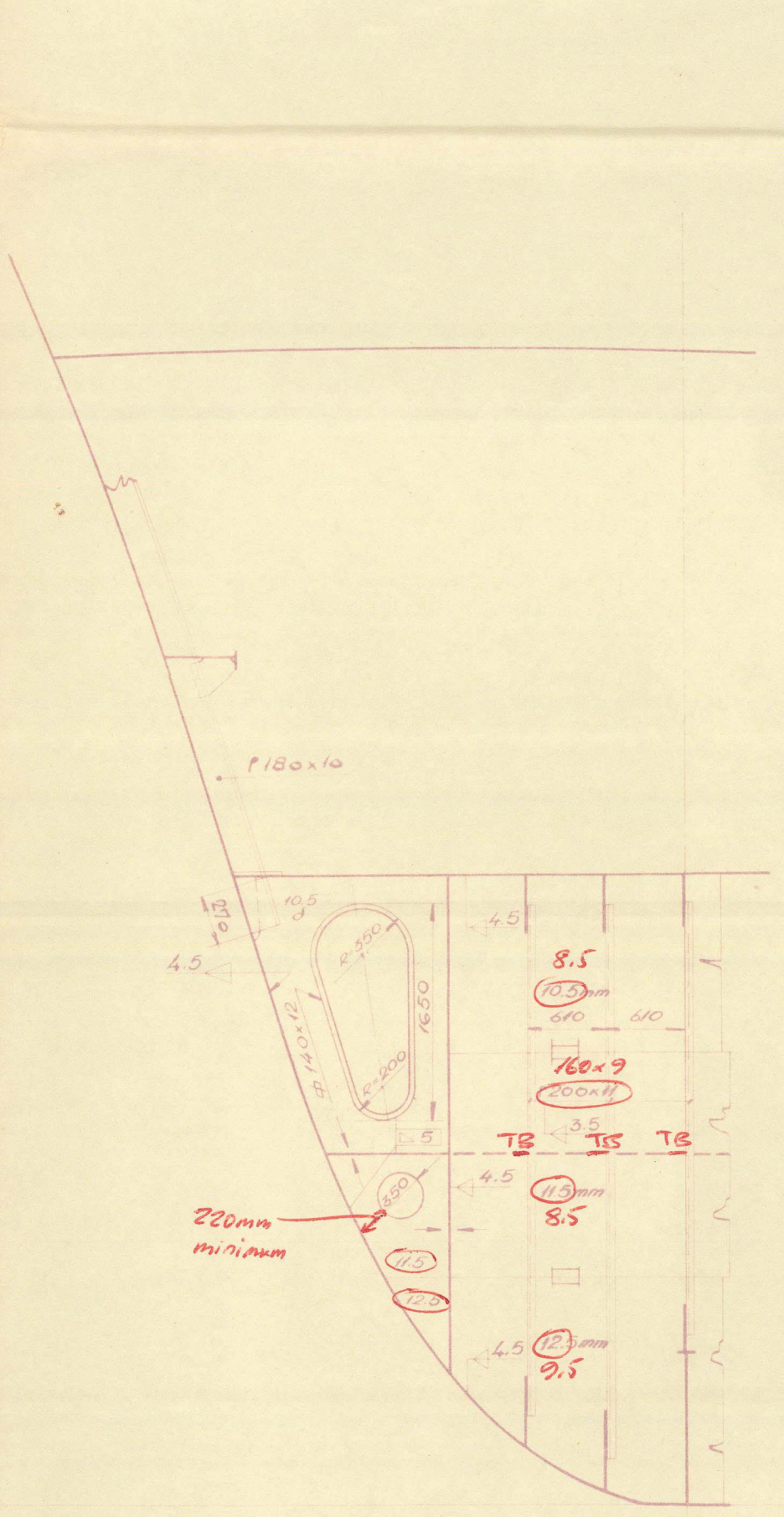
O.T. BULKHEAD ON FR-137



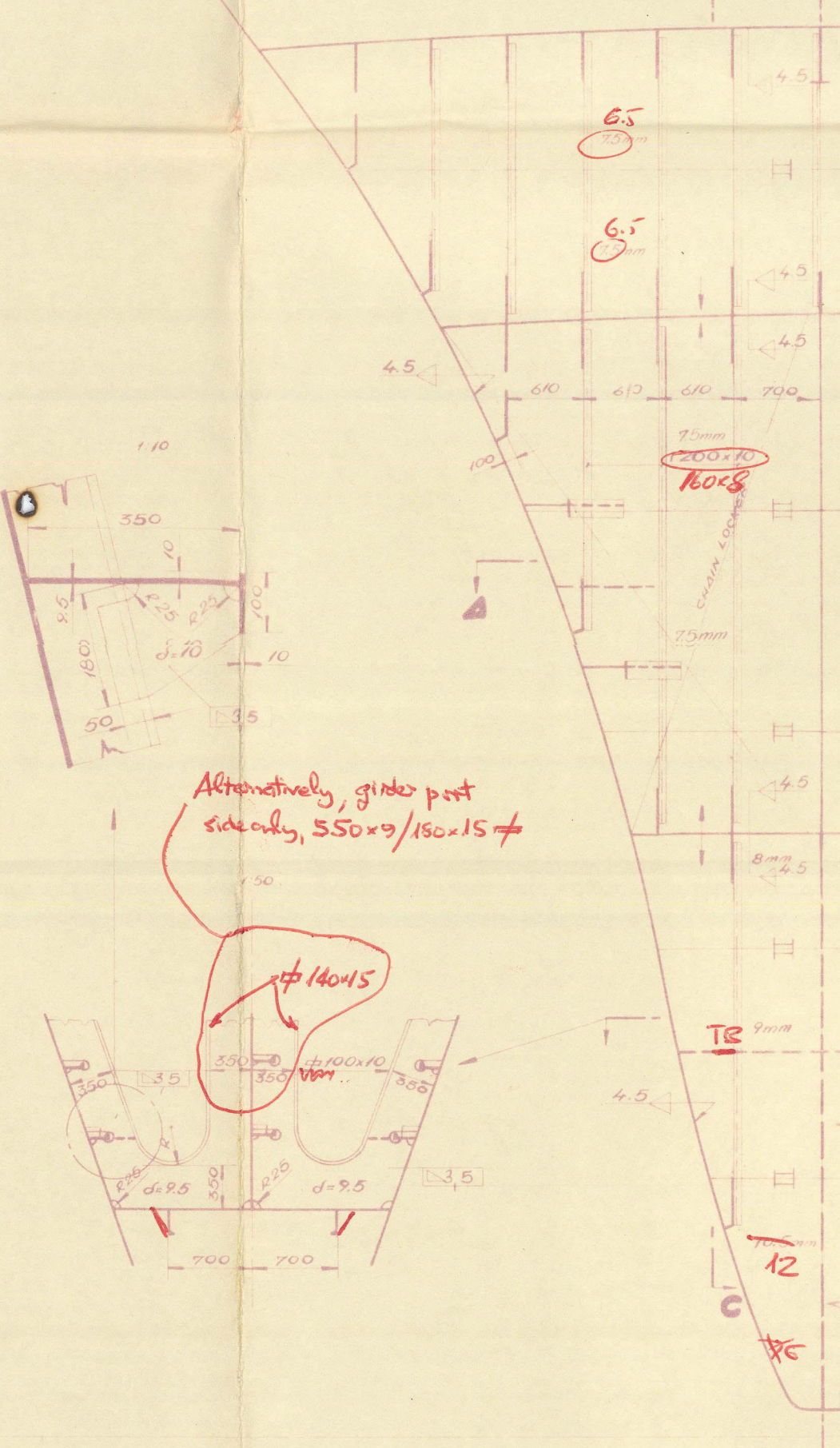
O.T. BULKHEAD ON FR-139
OVERFLOW ABOVE FORECASTLE DECK



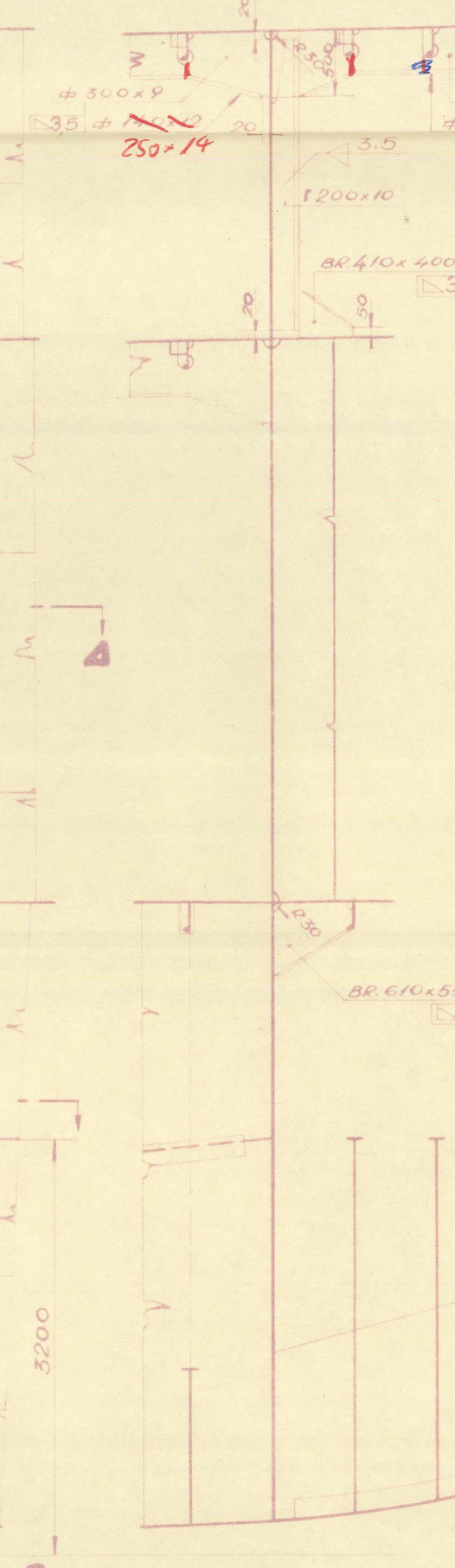
O.T. BULKHEAD ON FR-141
OVERFLOW ABOVE FORECASTLE DECK



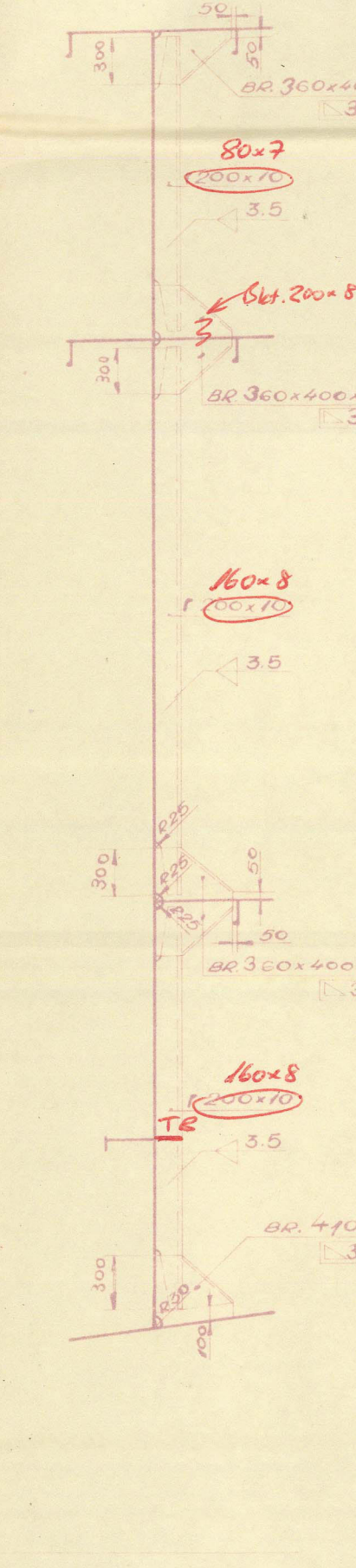
O.T. BULKHEAD ON FR-150
VIEW TO STEER
OVERFLOW ABOVE FORECASTLE DECK



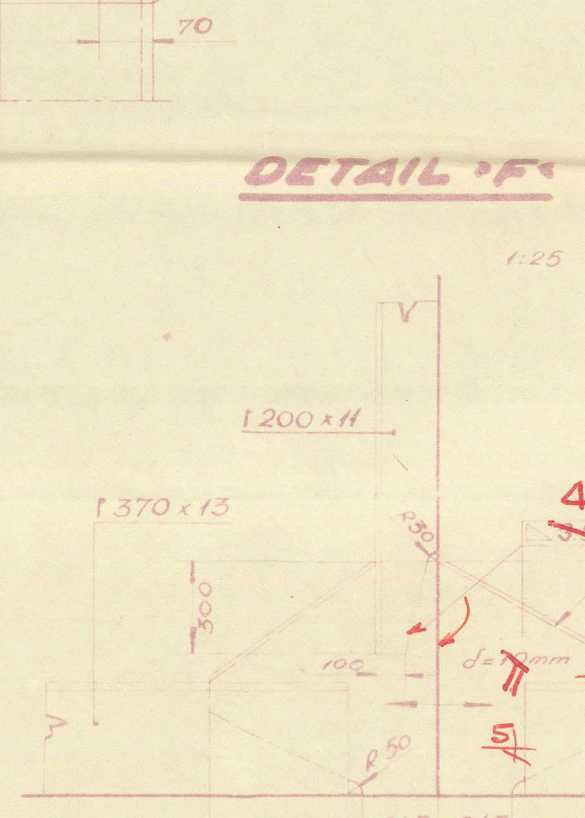
SECTION B-B



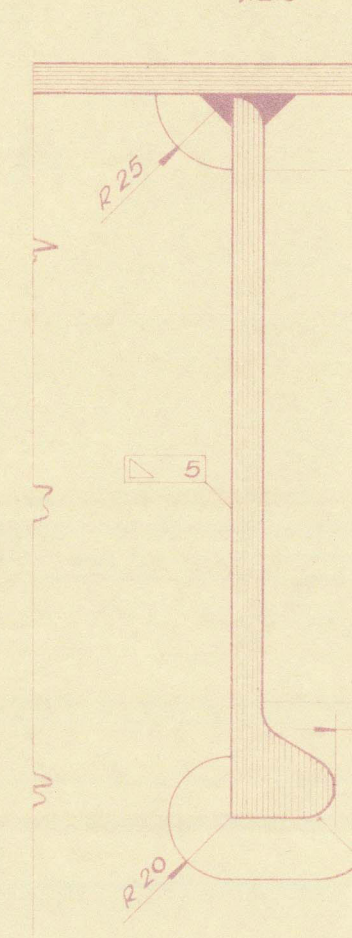
SECTION C-C



DETAIL D



DETAIL G



NOTE:

THE DRAWING SHOWS THE STERN VIEW
OF THE BULKHEAD.



Surveyors' Copy

KOMADA		PREDMET		POS. MATERIAL. OPASKA		JEDIN. UPOIN	
DAT. INDEK. POIS.		PRONJENE I DOPUNE		TJEZINA		TJEZINA	
LZ		LZ		LZ		LZ	
137		137		137		137	
137		137		137		137	
137		137		137		137	
137		137		137		137	
137		137		137		137	
137		137		137		137	
137		137		137		137	
137		137		137		137	
137		137		137		137	
137		137		137		137	
137		137		137		137	
137		137		137		137	
137		137		137		137	
137		137		137		137	
137		137		137		137	
137		137		137		137	
137		137		137		137	
137		137		137		137	
137		137		137		137	
137		137		137		137	
137		137		137		137	
137		137		137		137	
137		137		137		137	
137		137		137		137	
137		137		137		137	
137		137		137		137	
137		137		137		137	
137		137		137		137	
137		137		137		137	
137		137		137		137	
137		137		137		137	
137		137		137		137	
137		137		137		137	
137		137		137		137	
137		137		137		137	
137		137		137		137	
137		137		137		137	
137		137		137		137	
137		137		137		137	
137		137		137		137	
137		137		137		137	
137		137		137		137	
137		137		137		137	
137		137		137		137	
137		137		137		137	
137		137		137		137	
137		137		137		137	
137		137		137		137	
137		137		137		137	
137		137		137		137	
137		137		137		137	
137		137		137		137	
137		137		137		137	
137		137		137		137	
137		137		137		137	
137		137		137		137	
137		137		137		137	
137		137		137		137	
137		137		137		137	
137		137		137		137	
137		137		137		137	
137		137		137		137	
137		137		137		137	
137		137		137		137	
137		137		137		137	
137		137		137		137	
137		137		137		137	
137		137		137		137	
137		137		137		137	
137		137		137		137	
137		137		137		137	
137		137		137		137	
137		137		137		137	
137		137		137		137	
137		137		137		137	
137		137		137		137	
137		137		137		137	
137		137		137		137	
137		137		137		137	
137		137		137		137	
137		137		137		137	
137		137		137		137	
137		137		137		137	
137		137		137		137	
137		137		137		137	
137		137		137		137	
137		137		137		137	
137		137		137		137	
137		137		137		137	
137		137		137		137	
137		137		137		137	
137		137		137		137	
137		137		137		137	
137		137		137		137	
137		137		137		137	
137		137		137		137	
137		137		137		137	
137		137		137		137	
137		137		137		137	
137		137		137		137	
137		137		137		137	
137		137		137		137	
137		137		137		137	
137		137		137		137	
137		137		137		137	
137		137		137		137	
137		137		137		137	
137		137		137		137	
137		137		137		137	
137		137		137		137	
137		137		137		137	
137		137		137		137	
137		137		137		137	
137		137		137		137	
137		137		137		137	
137		137		137		137	
137		137		137		137	
137		137		137		137	
137		137		137		137	
137		137		137		137	
137		137		137		137	
137		137		137		137	
137		137		137		137	
137		137		137		137	
137		137		137		137	
137		137		137		137	
137		137		137		137	
137		137		137		137	
137		137		137		137	
137		137		137		137	
137		137		137		137	
137		137		137		137	
137		137		137		137	
137		137		137		137	
137		137		137		137	
137		137		137		137	
137		137		137		137	
137		137		137		137	
137		137		137		137	
137		137		137		137	
137		137		137		137	
137		137		137		137	
137		137		137		137	
137		137		13			

716

'J. L. MOSOR' - TROAR

YARD No 137

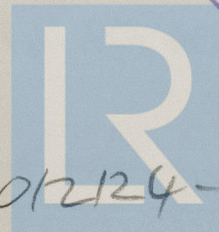
NAME OF SHIP	R. I. SORONG	★
TO ACCOMPANY	SPLIT	REPORT No. 2539/FE
DATED	17.4.65	

No 7711: O.T. & W.T. BULKHEADS

THIS PLAN HAS NOT BEEN
ANNOTATED
See accompanying »AS BUILT« plans

RECORDS DEPT.,
LONDON.

10



© 2020

Lloyd's Register
Foundation

012124-02128-0071