

19.12.33

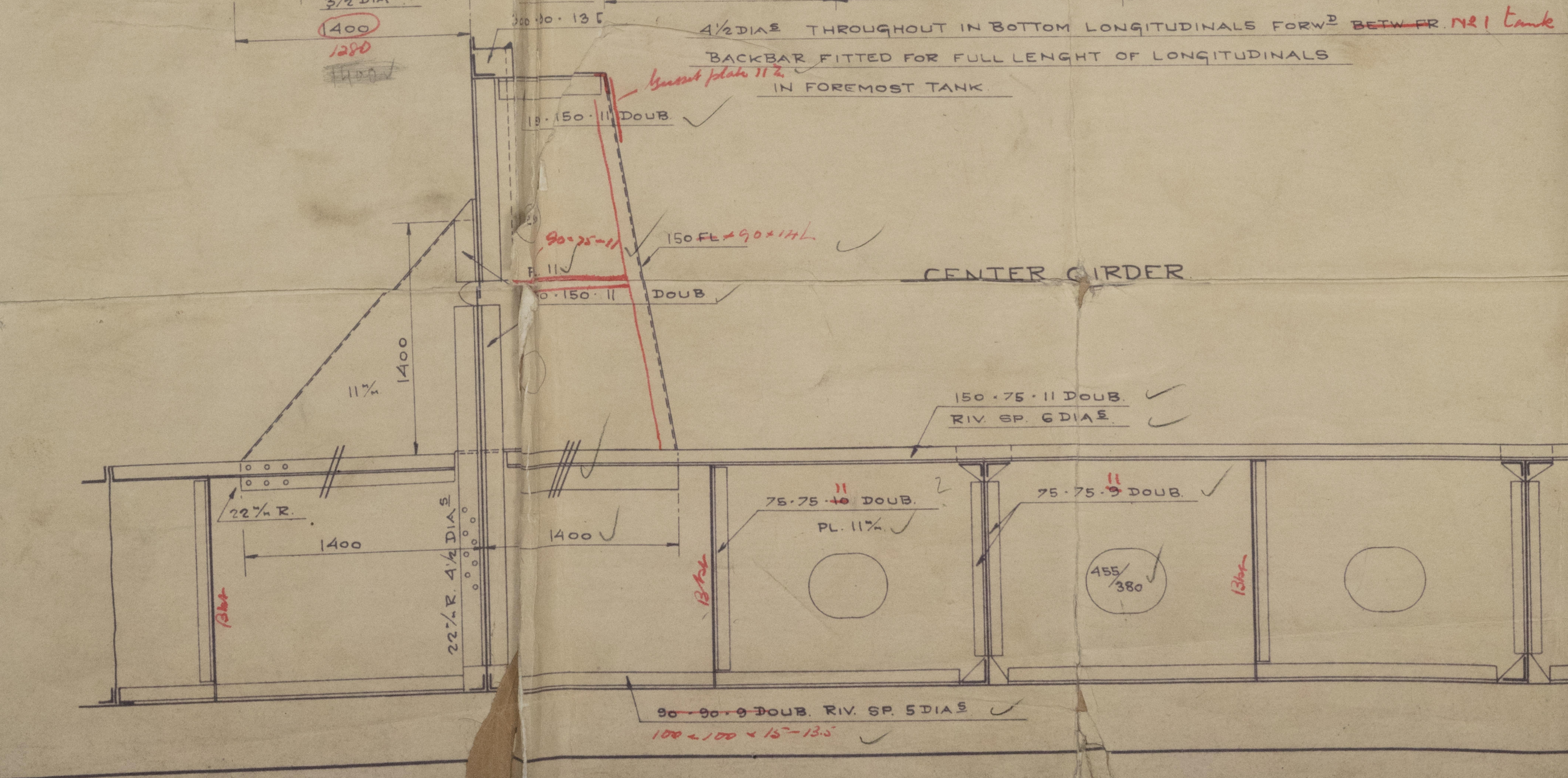
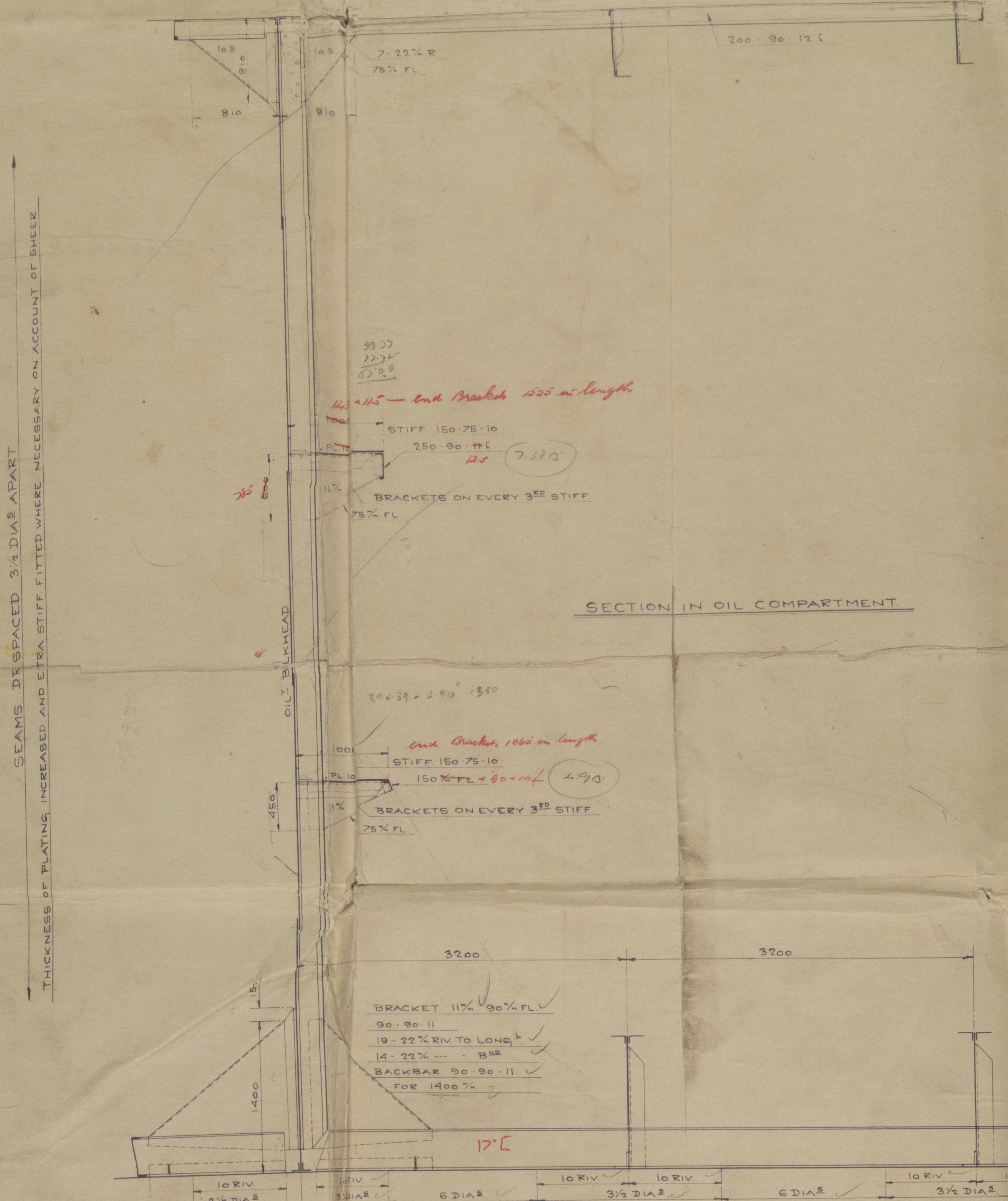
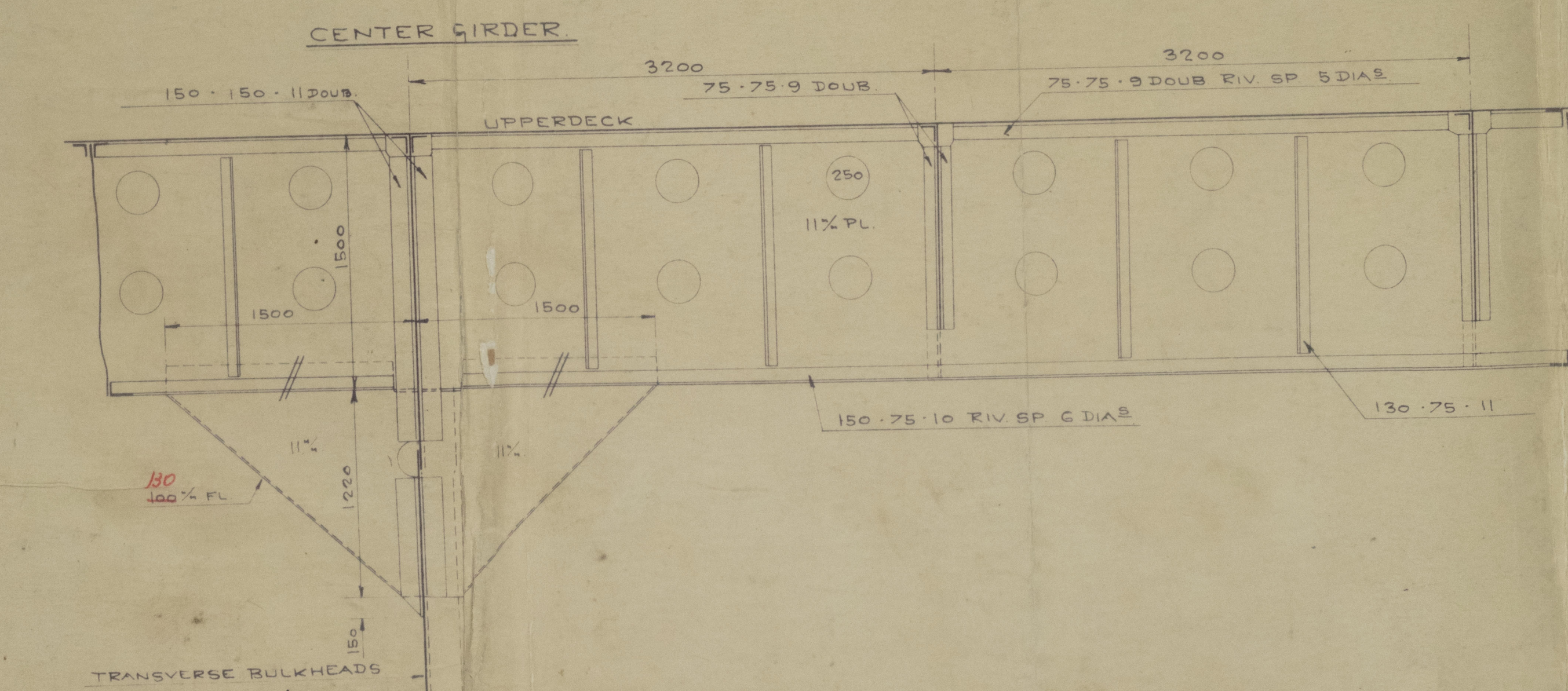
— YARD NO 53. — **— MIDSHIP SECTION —** SCALE 1/25

DIMENSIONS		
LENGTH BETWEEN PP	455.0	41.225 MTR
BREADTH MOULDED	62.4	18.807
DEPTH MOULDED (TO UPPERDECK)	34.3	10.422
HEIGHT OF POOP	7.8	2.382
BRIDGE	7.0	2.134
FORECASTLE	7.0	2.140
CLASS: LLOYDS 100 A1 CARRYING PETROLEUM IN BULK		
LONGITUDINAL FRAMES IN CENTER TANKS AND TRANSVERSE FRAMES IN SIDETANKS		
DIMENSIONS OF BRIDGE AND FORECASTLE		

NUMERALS		
PIPE LONGITUDINAL NUMBER	L.D. 455.33	155.75
SECOND	L.D. 455.33	44.00
PROJECTION	L.D. 455.33	13.5
ALL BULL SECTIONS ARE BASED ON THE 1924 STANDARDS		

EQUIPMENT NO. EN	
1. (7.10) - 455 (21.445)	455.33
2. 75.35.2.2.2	55.01
3. 75.35.2.2.2	55.01
4. 75.35.2.2.2	55.01
5. 75.35.2.2.2	55.01
6. 75.35.2.2.2	55.01
7. 75.35.2.2.2	55.01
8. 75.35.2.2.2	55.01
9. 75.35.2.2.2	55.01
10. 75.35.2.2.2	55.01
11. 75.35.2.2.2	55.01
12. 75.35.2.2.2	55.01
13. 75.35.2.2.2	55.01
14. 75.35.2.2.2	55.01
15. 75.35.2.2.2	55.01
16. 75.35.2.2.2	55.01
17. 75.35.2.2.2	55.01
18. 75.35.2.2.2	55.01
19. 75.35.2.2.2	55.01
20. 75.35.2.2.2	55.01
21. 75.35.2.2.2	55.01
22. 75.35.2.2.2	55.01
23. 75.35.2.2.2	55.01
24. 75.35.2.2.2	55.01
25. 75.35.2.2.2	55.01
26. 75.35.2.2.2	55.01
27. 75.35.2.2.2	55.01
28. 75.35.2.2.2	55.01
29. 75.35.2.2.2	55.01
30. 75.35.2.2.2	55.01
31. 75.35.2.2.2	55.01
32. 75.35.2.2.2	55.01
33. 75.35.2.2.2	55.01
34. 75.35.2.2.2	55.01
35. 75.35.2.2.2	55.01
36. 75.35.2.2.2	55.01
37. 75.35.2.2.2	55.01
38. 75.35.2.2.2	55.01
39. 75.35.2.2.2	55.01
40. 75.35.2.2.2	55.01
41. 75.35.2.2.2	55.01
42. 75.35.2.2.2	55.01
43. 75.35.2.2.2	55.01
44. 75.35.2.2.2	55.01
45. 75.35.2.2.2	55.01
46. 75.35.2.2.2	55.01
47. 75.35.2.2.2	55.01
48. 75.35.2.2.2	55.01
49. 75.35.2.2.2	55.01
50. 75.35.2.2.2	55.01
51. 75.35.2.2.2	55.01
52. 75.35.2.2.2	55.01
53. 75.35.2.2.2	55.01
54. 75.35.2.2.2	55.01
55. 75.35.2.2.2	55.01
56. 75.35.2.2.2	55.01
57. 75.35.2.2.2	55.01
58. 75.35.2.2.2	55.01
59. 75.35.2.2.2	55.01
60. 75.35.2.2.2	55.01
61. 75.35.2.2.2	55.01
62. 75.35.2.2.2	55.01
63. 75.35.2.2.2	55.01
64. 75.35.2.2.2	55.01
65. 75.35.2.2.2	55.01
66. 75.35.2.2.2	55.01
67. 75.35.2.2.2	55.01
68. 75.35.2.2.2	55.01
69. 75.35.2.2.2	55.01
70. 75.35.2.2.2	55.01
71. 75.35.2.2.2	55.01
72. 75.35.2.2.2	55.01
73. 75.35.2.2.2	55.01
74. 75.35.2.2.2	55.01
75. 75.35.2.2.2	55.01
76. 75.35.2.2.2	55.01
77. 75.35.2.2.2	55.01
78. 75.35.2.2.2	55.01
79. 75.35.2.2.2	55.01
80. 75.35.2.2.2	55.01
81. 75.35.2.2.2	55.01
82. 75.35.2.2.2	55.01
83. 75.35.2.2.2	55.01
84. 75.35.2.2.2	55.01
85. 75.35.2.2.2	55.01
86. 75.35.2.2.2	55.01
87. 75.35.2.2.2	55.01
88. 75.35.2.2.2	55.01
89. 75.35.2.2.2	55.01
90. 75.35.2.2.2	55.01
91. 75.35.2.2.2	55.01
92. 75.35.2.2.2	55.01
93. 75.35.2.2.2	55.01
94. 75.35.2.2.2	55.01
95. 75.35.2.2.2	55.01
96. 75.35.2.2.2	55.01
97. 75.35.2.2.2	55.01
98. 75.35.2.2.2	55.01
99. 75.35.2.2.2	55.01
100. 75.35.2.2.2	55.01

EQUIPMENT LETTERS C	
3 BOWER ANCHORS STOCKLESS 2 AT 27 CENT (COLLECTIVE WEIGHT 215 ACFT)	
1 STEAM	22
2 STEAM	22
3 STEAM	22
4 STEAM	22
5 STEAM	22
6 STEAM	22
7 STEAM	22
8 STEAM	22
9 STEAM	22
10 STEAM	22
11 STEAM	22
12 STEAM	22
13 STEAM	22
14 STEAM	22
15 STEAM	22
16 STEAM	22
17 STEAM	22
18 STEAM	22
19 STEAM	22
20 STEAM	22
21 STEAM	22
22 STEAM	22
23 STEAM	22
24 STEAM	22
25 STEAM	22
26 STEAM	22
27 STEAM	22
28 STEAM	22
29 STEAM	22
30 STEAM	22
31 STEAM	22
32 STEAM	22
33 STEAM	22
34 STEAM	22
35 STEAM	22
36 STEAM	22
37 STEAM	22
38 STEAM	22
39 STEAM	22
40 STEAM	22
41 STEAM	22
42 STEAM	22
43 STEAM	22
44 STEAM	22
45 STEAM	22
46 STEAM	22
47 STEAM	22
48 STEAM	22
49 STEAM	22
50 STEAM	22
51 STEAM	22
52 STEAM	22
53 STEAM	22
54 STEAM	22
55 STEAM	22
56 STEAM	22
57 STEAM	22
58 STEAM	22
59 STEAM	22
60 STEAM	22
61 STEAM	22
62 STEAM	22
63 STEAM	22
64 STEAM	22
65 STEAM	22
66 STEAM	22
67 STEAM	22
68 STEAM	22
69 STEAM	22
70 STEAM	22
71 STEAM	22
72 STEAM	22
73 STEAM	22
74 STEAM	22
75 STEAM	22
76 STEAM	22
77 STEAM	22
78 STEAM	22
79 STEAM	22
80 STEAM	22
81 STEAM	22
82 STEAM	22
83 STEAM	22
84 STEAM	22
85 STEAM	22
86 STEAM	22
87 STEAM	22
88 STEAM	22
89 STEAM	22
90 STEAM	22
91 STEAM	22
92 STEAM	22
93 STEAM	22
94 STEAM	22
95 STEAM	22
96 STEAM	22
97 STEAM	22
98 STEAM	22
99 STEAM	22
100 STEAM	22



53

2

1-25

8-12-33

MIDSHIP SECTION

010103-010104-010105

© 2021

Lloyd's Register

Foundation

Odense Staalskibsværft,
Yard No. 53.

Adour

Ex MS Europa
to

Chassis No.
9502

Midship section.



© 2021

Lloyd's Register
Foundation

012142-012143-012144