

# RUDDER PLAN. SHIP NO. 442. M.V.

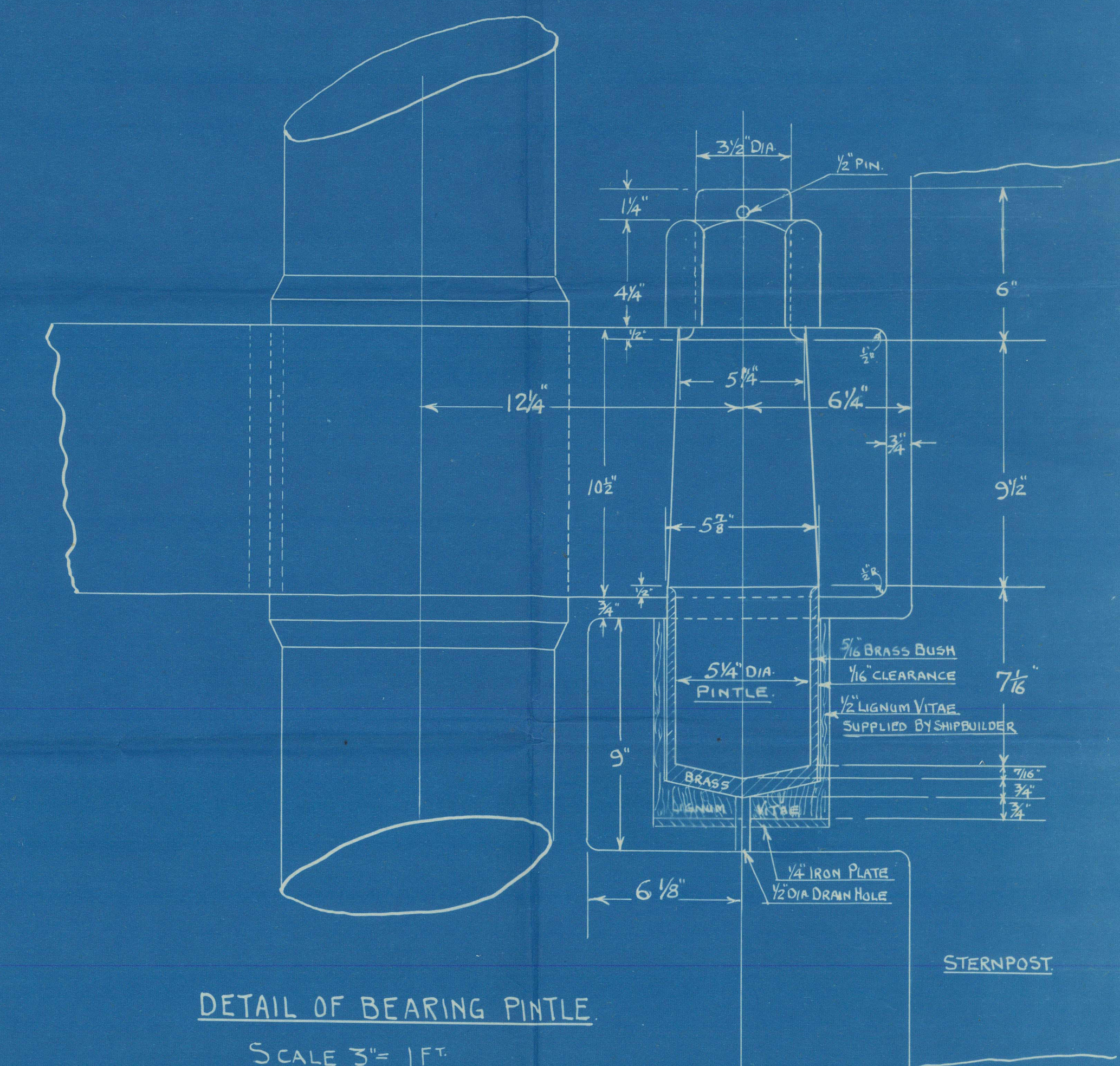
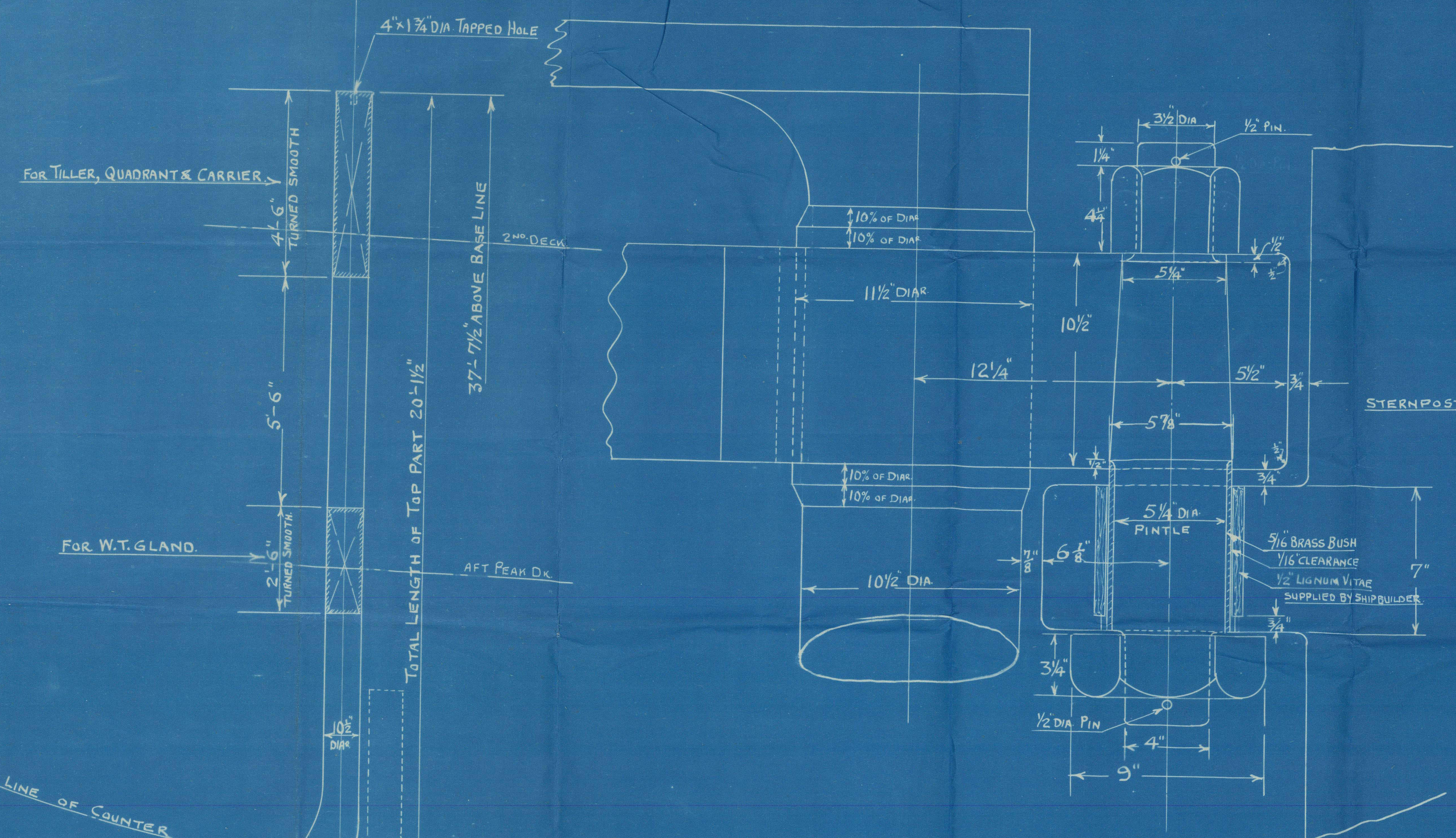
SCALE 1/2 INCH = 1 FOOT.

A = AREA OF RUDDER IN SQ. FT. ABAFT FOR<sup>8</sup> EDGE = 107 SQ. FT.

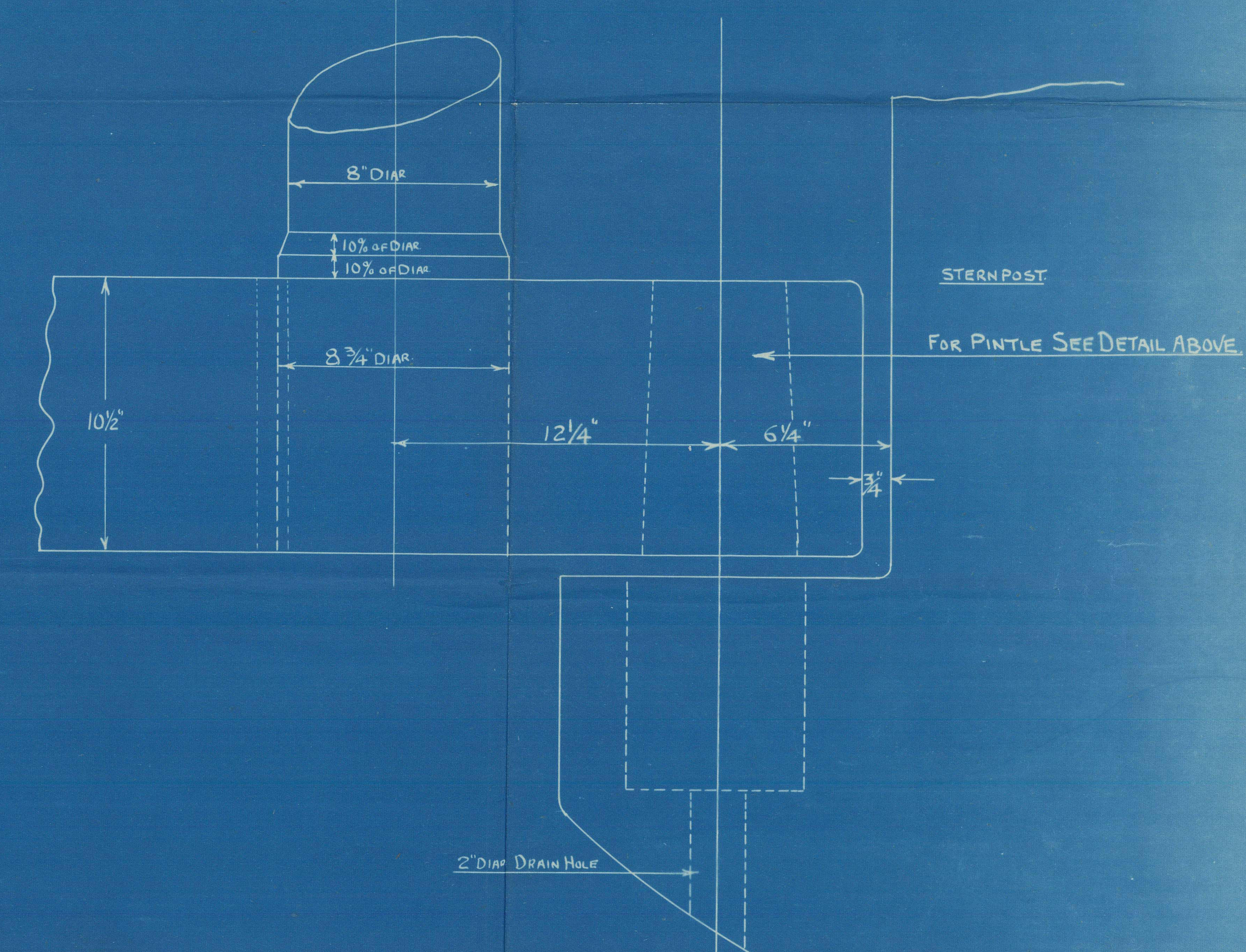
D = DISTANCE OF C.G. ABAFT C. OF PINTLES = 4.4 FT.

$A \times D = 107 \times 4.4 = 470.8$

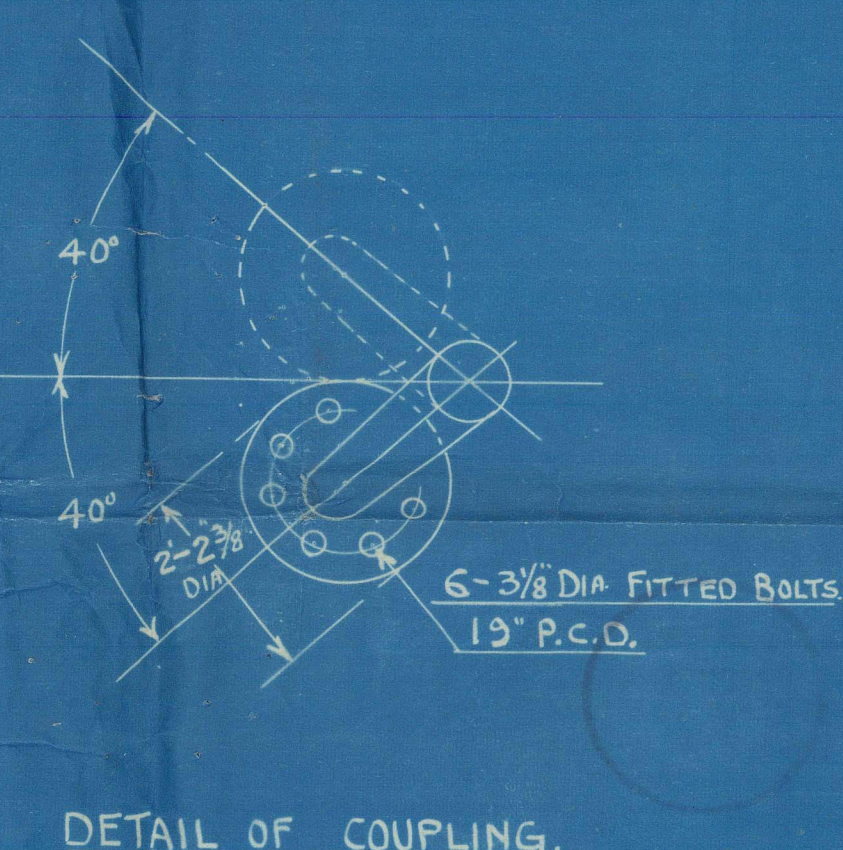
SPEED OF VESSEL, NOT EXCEEDING 12 KNOTS.



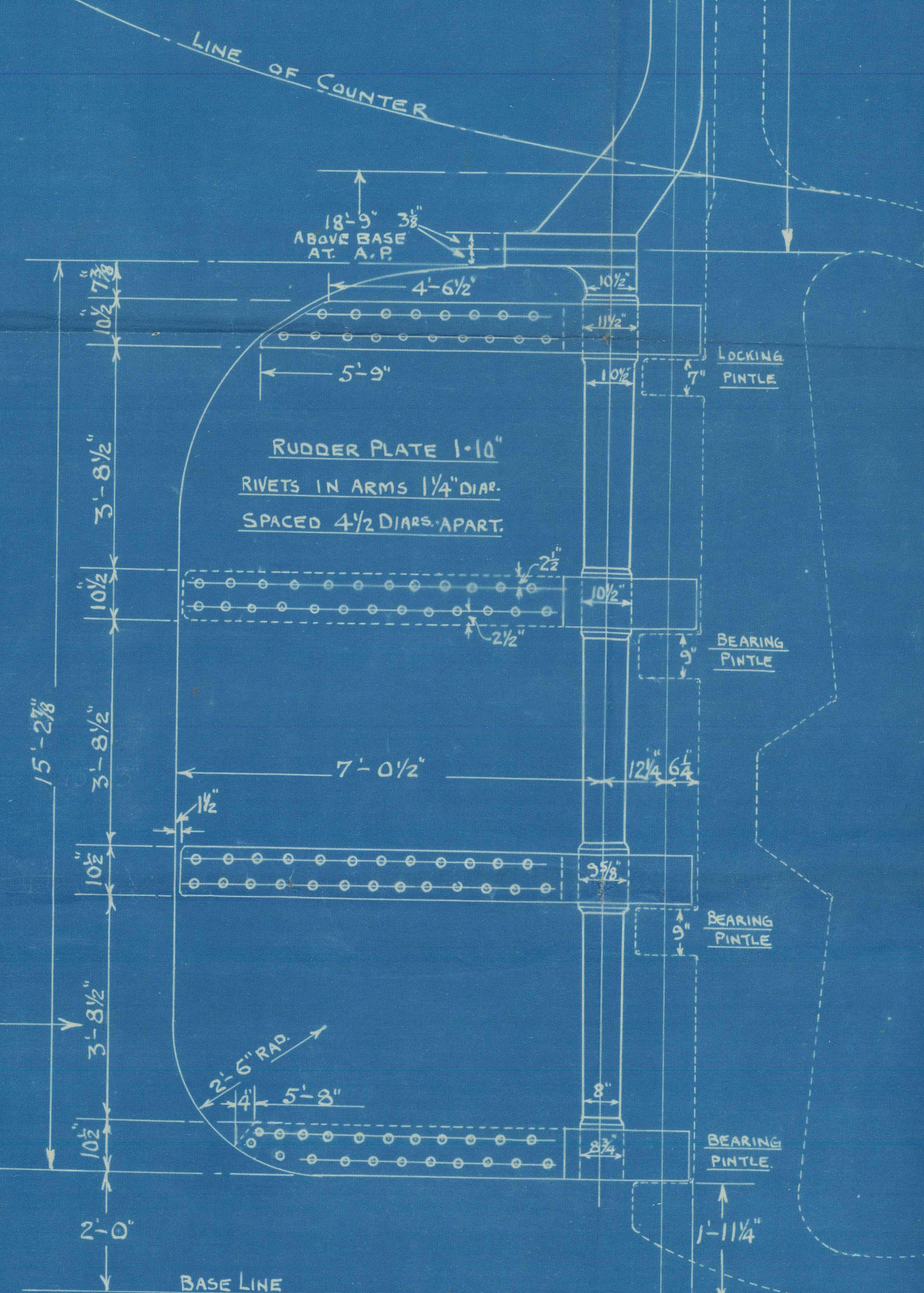
DETAIL OF BEARING PINTLE  
SCALE 3\"/>



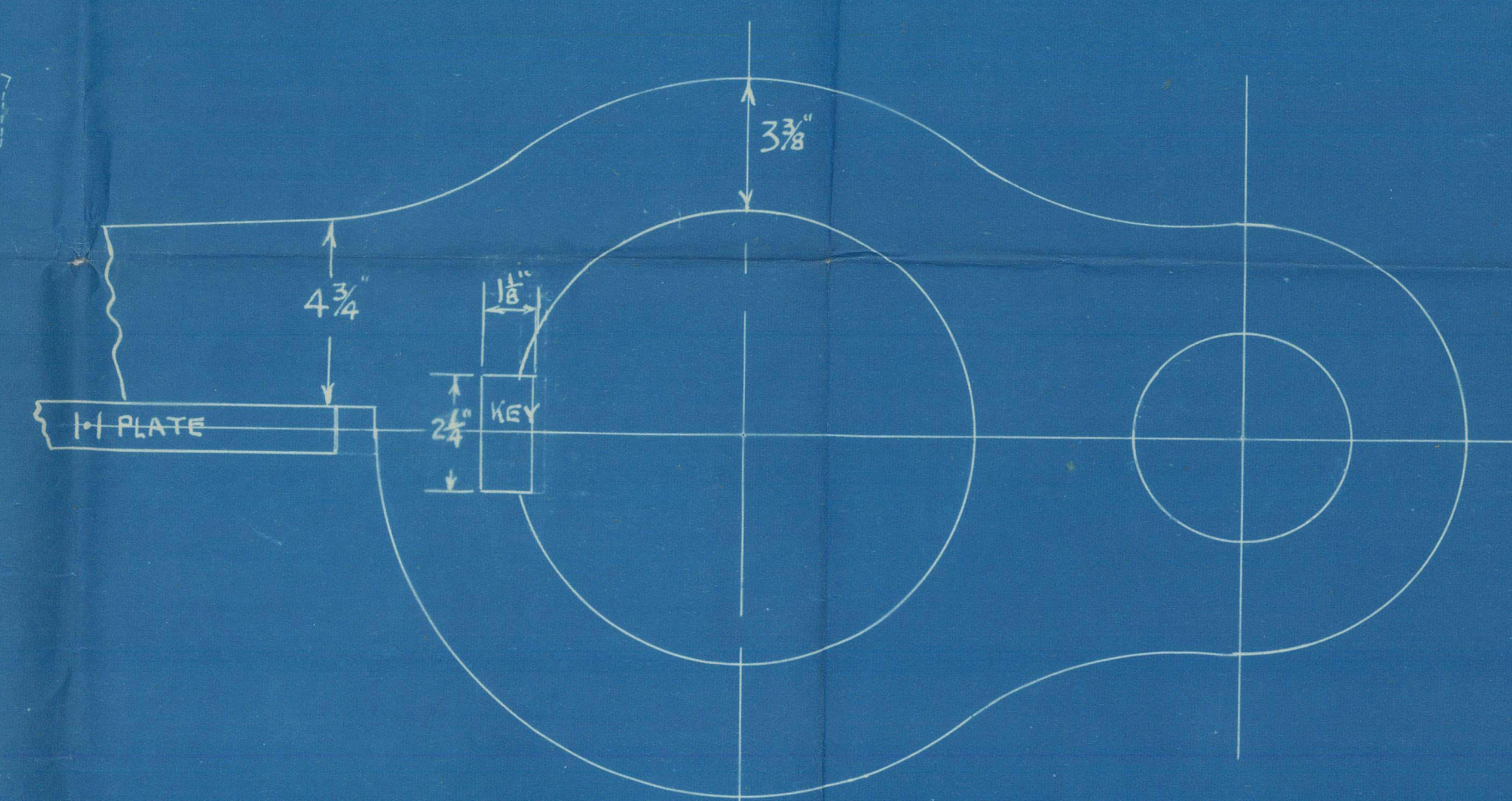
DETAIL AT HEEL OF RUDDER  
SCALE 3\"/>



DETAIL OF COUPLING.



PLAN OF RUDDER ARMS.



DETAIL OF LOCKING PINTLE.  
SCALE 3\"/>

NOTE: ALL PINTLES BEARING EXCEPT  
LOCKING PINTLE.

## NOTES.

RUDDER STOCK & PINTLES TO BE MADE FROM INGOT STEEL.

ARMS OF FORGED INGOT STEEL, ALL FINISHED COMPLETE EXCEPT

PLATE WHICH WILL BE SUPPLIED & FITTED BY SHIPBUILDER.

ALL PINTLES BRASS BUSHED AND ALL PINTLES BEARING EXCEPT LOCKING PINTLE.

RUDDER STOCK TURNED SMOOTH WHERE SHOWN FOR TILLER, QUADRANT,

CARRIER AND W.T. GLAND.

BOLTS IN COUPLING TURNED FULL LENGTH.

ALL TO LLOYD'S TESTS & REQUIREMENTS AND CERTIFICATES SUPPLIED.

APPROVED  
REGISTER OF SHIPPING  
James & Clark  
DATE 27/11/11

CHARLES CONNELL & CO. LTD.		
RUDDER PLAN		
442	5	78



~~44~~

Charles Connell


N<sup>o</sup> 442.

7

Rudder.

442 Hughli

GLASGOW REPORT No. 67373

445 Megna  +

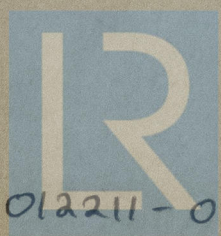
GLASGOW REPORT No. 68172

448 Japto

GLASGOW REPORT No. 70069

449 Kallada

GLASGOW REPORT No. 70586



© 2021

Lloyd's Register  
Foundation

012211-012220-0130