

Lloyd's Register of Shipping.

Ship's Name S.S. "MASUNDA"

Official No. 160258

Memorandum of alterations reported since ship was surveyed for assignment of Load Lines in JANUARY, 1948.

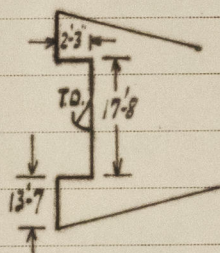
NEW POOP Hatch on poop deck and in poop space removed and deck efficiently
ACCOMMODATION plated over.

New deckhouse fitted on poop deck with opening giving access to poop space P. & S. Size of opening 5'-0" x 2'-2" fitted with hinged steel door, operated from both sides, sill 18" high.

Tonnage door on poop front removed and bulkhead efficiently plated over. P. & S. 12" dia. strong hinged sidescuttles with deadlights (Material brass), fitted through shell P. & S. into poop space.

VENTILATORS 4 - 9" dia. cowl vents to poop space fitted on top of poop deckhouse. 6 - 9" dia. cowl vents and 6 - 12" dia. cowl vents to poop space fitted on poop deck. All vent coamings 24" high and .40 thick. Wood plugs and canvas covers supplied for all ventilators.

FORECASTLE. Opening at Centre line of forecastle front bulkhead now fitted with tonnage door, opening 5'-0" x 4'-0", Sill 18" high fitted with hinged steel door secured by 10 turnbuckles, door operated from outside only. (see sketch of Forecastle).



BRIDGE After coal hatch on bridge deck P. & S. reduced in size at aft end. Length of hatch now 14'-7"
Deck in way of removed portion of hatch efficiently plated over.

A copy of the above has been placed on board the vessel.

Alfred A. Moore

SURVEYOR TO LLOYD'S REGISTER OF SHIPPING,

GLASGOW.

4th January, 1947.