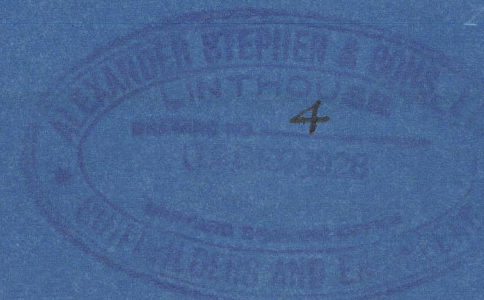


No 524

STERNPOST & RUDDER

SCALE $\frac{1}{2}'' = 1 \text{ FOOT}$



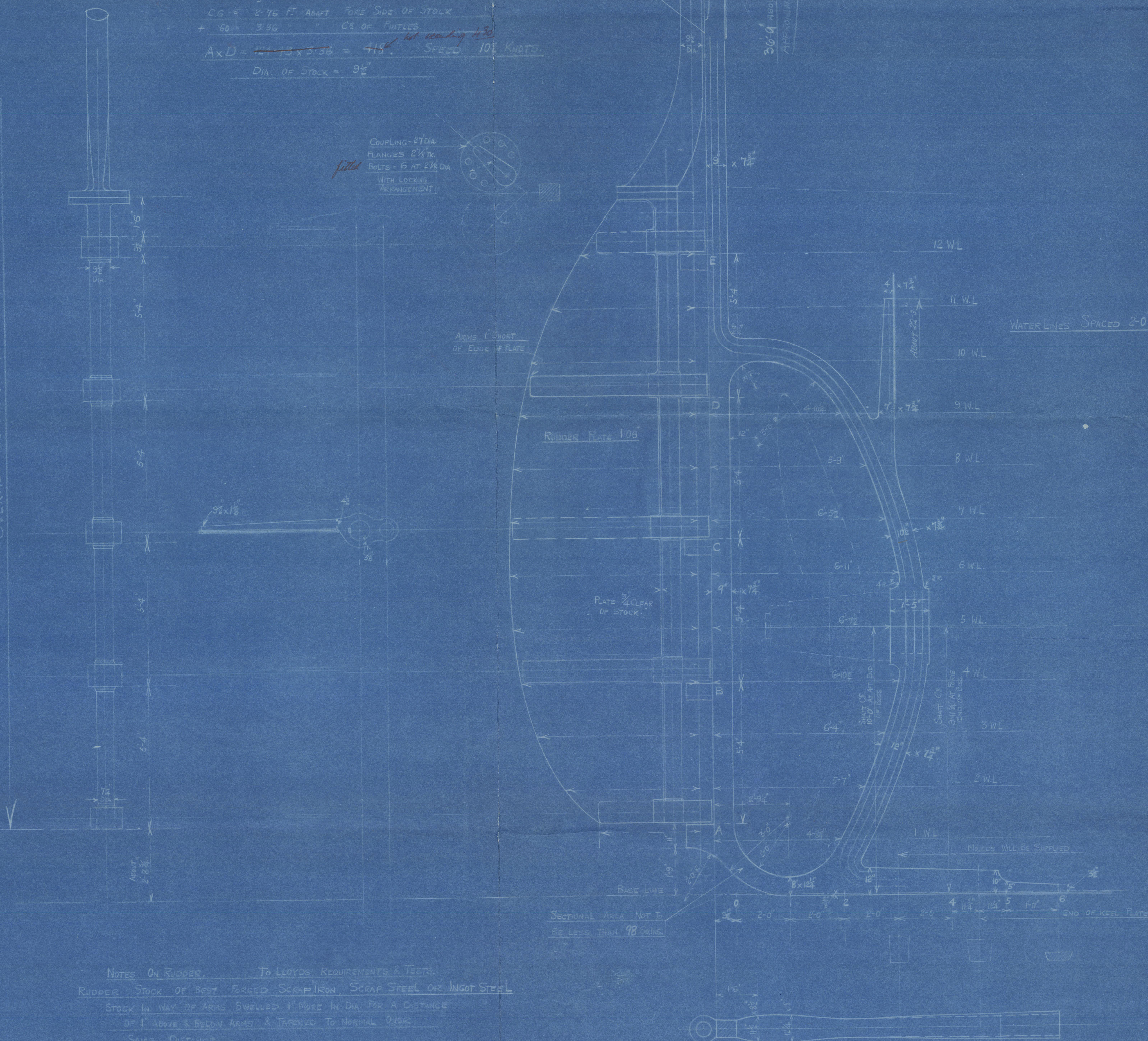
Area & C.G. of Rudder

Ord	Area	C.G.	Area	C.G.
1	2.25	1	2.25	1.12
2	4.52	7	1.05	2.28
3	6.84	2	1.05	2.92
4	8.30	4	1.05	3.12
5	8.46	2	1.05	3.18
6	5.24	1	1.05	2.77
7	3.10	1	1.05	1.53
	34.77			16.24

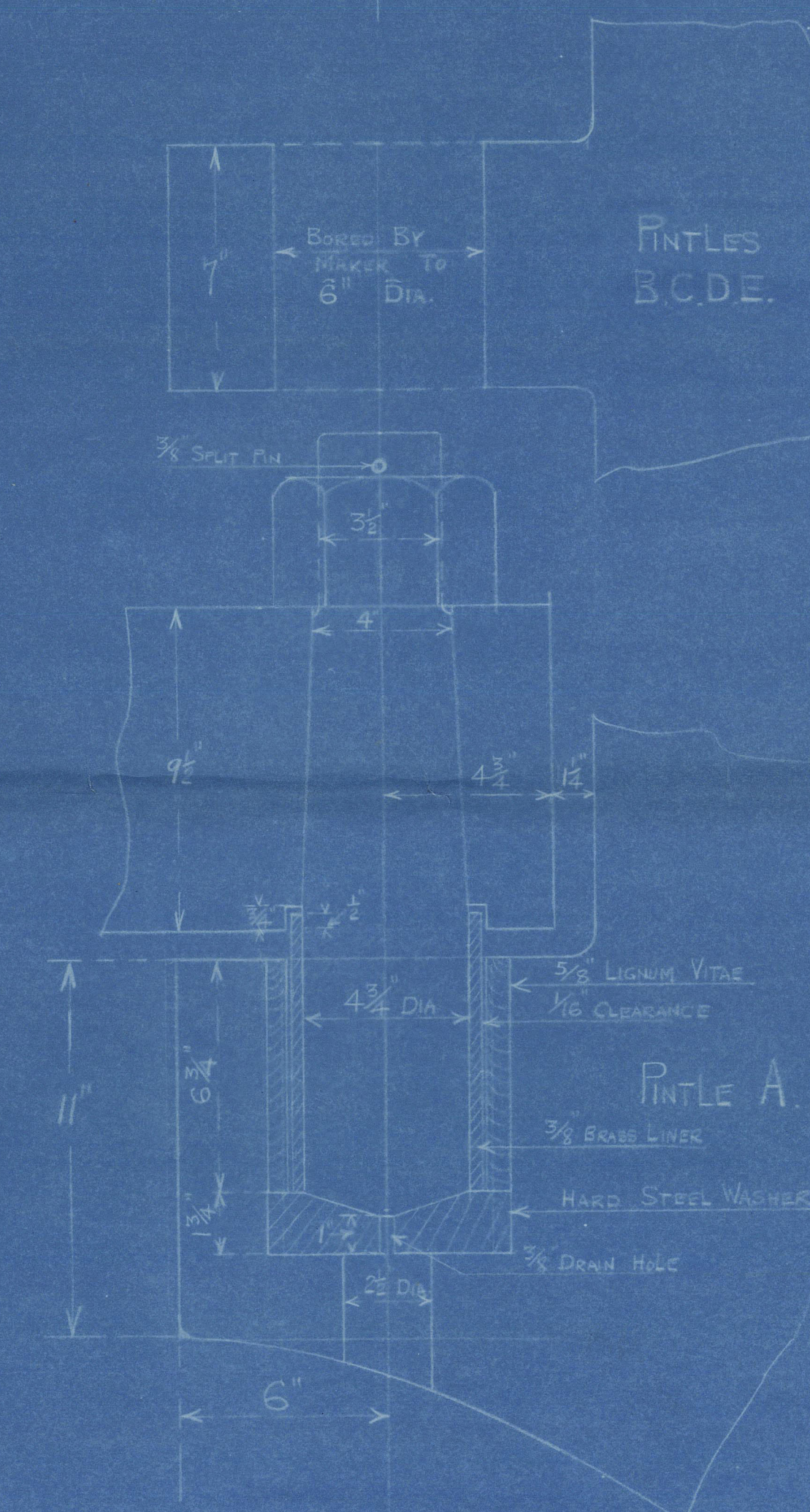
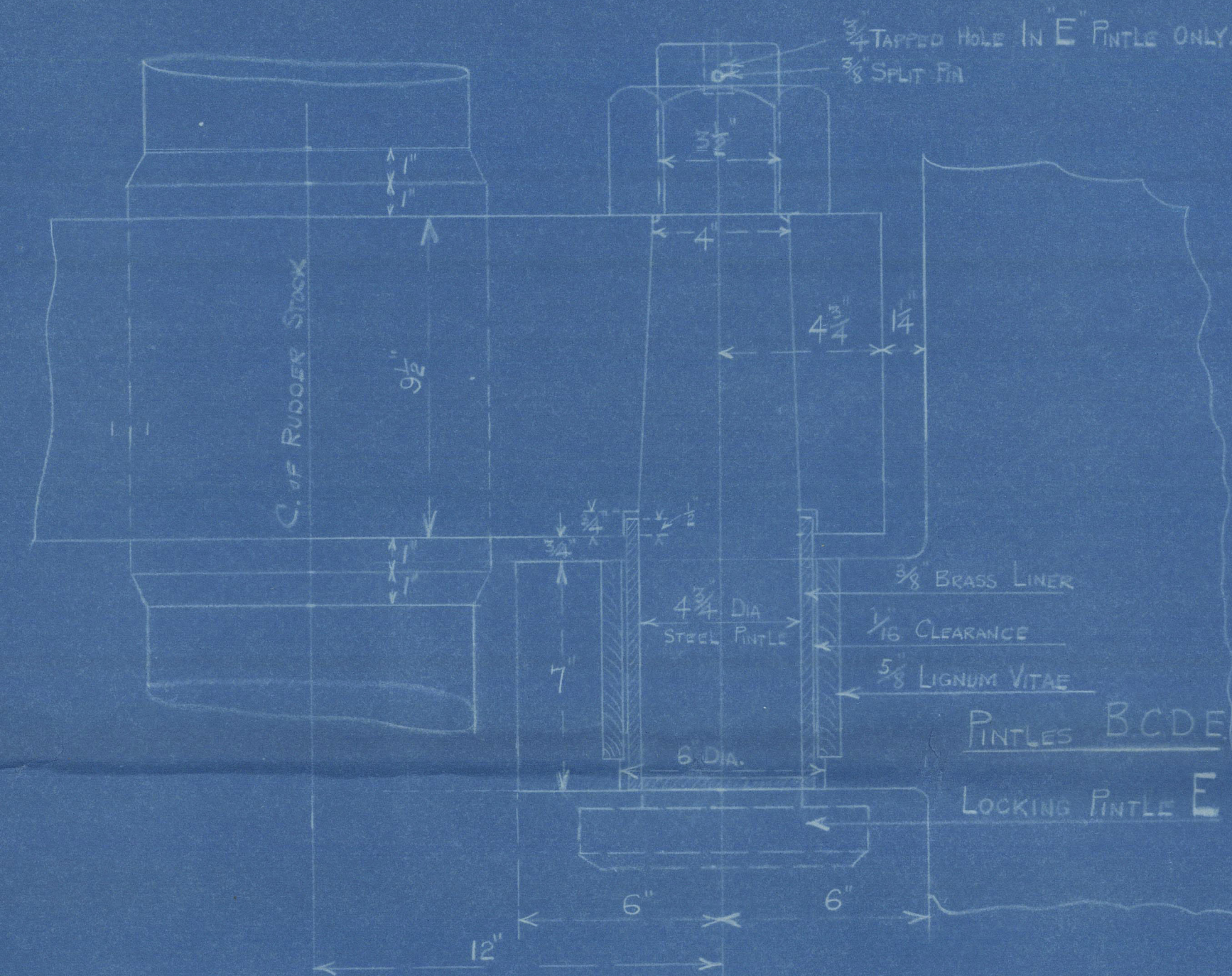
Common Interval 2.93

Area = $14.14 \times 3.18 = 44.45$ Sq Ft. Area Fore Side of Stock
 C.G. = 2.16 Ft. Aft. Fore Side of Stock
 + $60.3 \times 2.38 = 141.51$ Sq Ft. CS of Pintles
 A x D = $141.51 \times 3.18 = 449.6$ Sq Ft. Speed 10 Knots
 Dia. of Stock = $9\frac{1}{2}''$

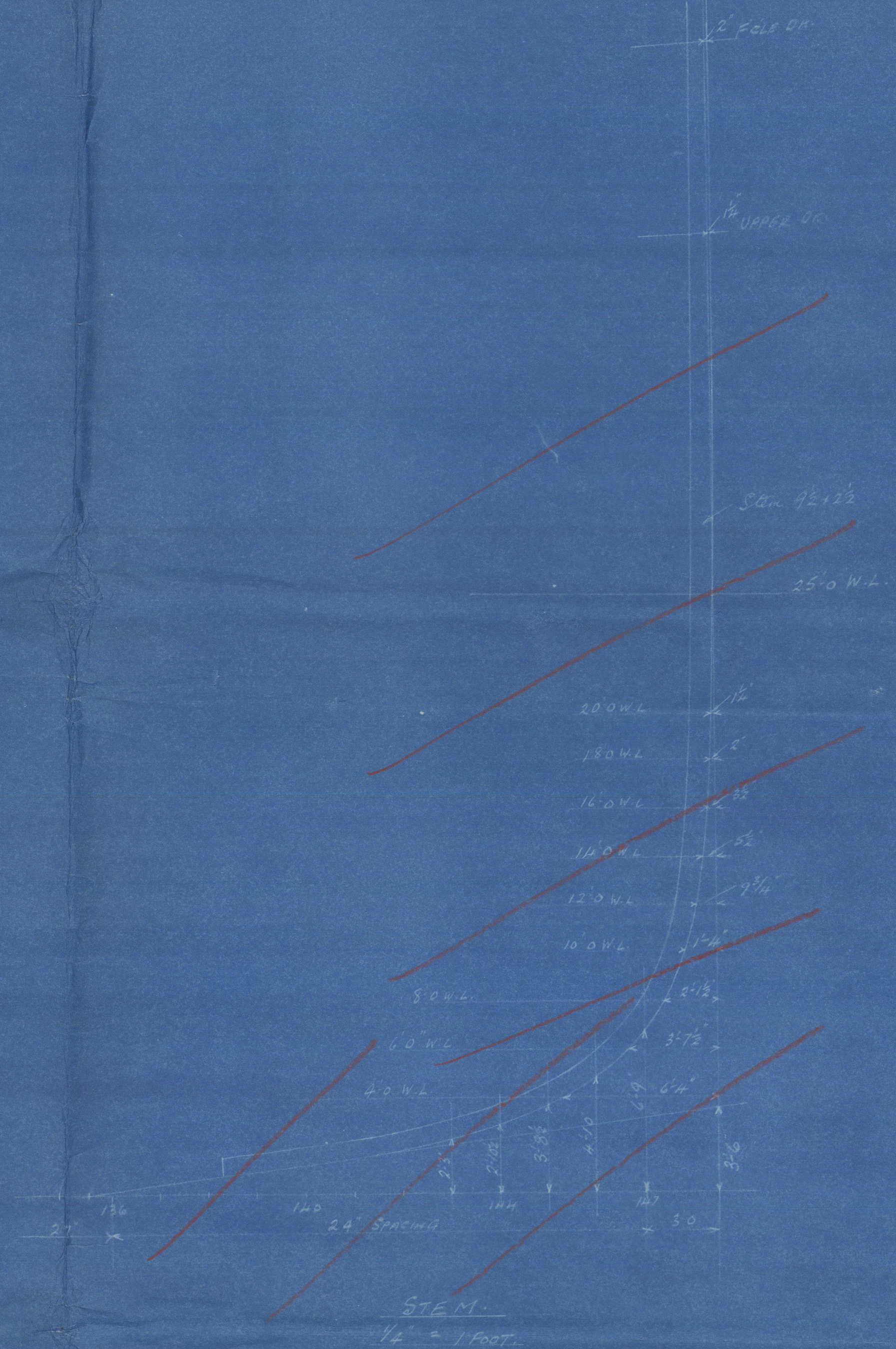
APPROXIMATE OVERALL LENGTH OF STOCK 44'0"



NOTES ON RUBBER. TO LLOYD'S REQUIREMENTS & TESTS.
 RUBBER STOCK OF BEST FORGED SCRAP IRON, SCRAP STEEL OR INUIT STEEL.
 STOCK IN WAY OF ARMS, SHAPED 1" MORE IN DIA. FOR A DISTANCE
 OF 1' ABOVE & BELOW ARMS & TAPERED TO NORMAL DIAM.
 SAME DISTANCE.
 ARMS SHOWN ON & KEYS. KEYS $2 \times 1''$ KEYWAYS CUT $\frac{1}{2}''$ DEEP.
 RIVETS 7/8" COMPLETE ROWS OF RIVETS IN EACH ARM. RIVETS 14 DIA.
 SPACED 4" DIA. IN EACH ROW. RIVETS NOT TO BE DIRECTLY
 OPPOSITE EACH OTHER, EXCEPT AT OUTER ENDS OF ARMS.
 RIVETS TO HAVE FULL HEADS & POINTS.
 HOLES 1 1/2" DIA. CENTERING IN PLATE & ARMS.
 RUBBER STOCK TO BE SUPPLIED COMPLETE WITH COUPLING BOLTS, FLANGES
 AND WITH BRASS LINERS ON FINETLES.



NOTES ON STERN FRAME.
 STERN FRAME OF FORGED SCRAP IRON, SCRAP STEEL OR INUIT STEEL.
 RIVETS RIVETS 1 1/2" DIA. SPACED GENERALLY 5\"/>



A. Stephen & Sons, Ltd.

No. 524.

Rudder & Steamport.

Gls Rpt. 49428

Masumda



© 2021

Lloyd's Register
Foundation