

EQUIPEMENT N°
 2ND N° 1145625
 Q.R. DECK 4x166 664
 FCL 7/4x733x25 137
 BRIDGE CASING 7/4x7x57 1995
 1245672

S. S. N° 89.

JSTARITZ "ESPELETTE"
MIDSHIP SECTION

SCALE 1/2" = 1 FT

To CLASS 100 A.I. AT LLOYDS

1 3/4 L.I. BUREAU VERITAS

B. = 33
 D. = 15.75
 48.75 1ST N°
 235
 24375
 14625
 9750
 1145625 2ND N°
 Q.R. DECK 235 = 11.9
 1975
 MAIN DR 235 = 14.9
 1575



EQUIPEMENT

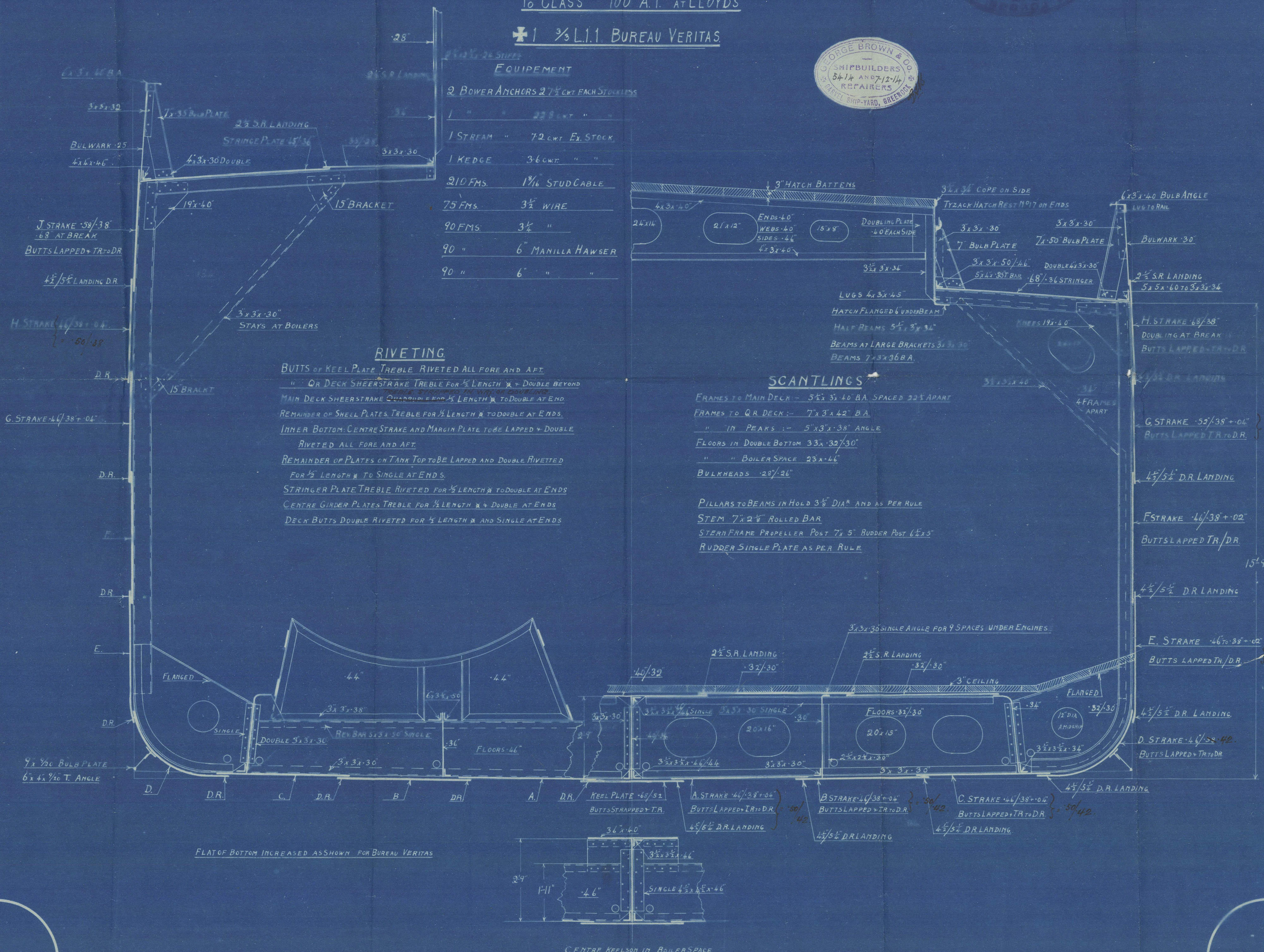
2 BOWER ANCHORS 27 1/2 CWT EACH STOCKLESS	
1 " " 228 CWT " "	
1 STREAM " 72 CWT EX STOCK	
1 KEDGE 36 CWT " "	
210 FMS. 1 1/8" STUD CABLE	
75 FMS. 3 1/2" WIRE	
90 FMS. 3 1/4" " "	
90 " 6" MANILLA HAWSER	
90 " 6" " "	

RIVETING

BUTTS OF KEEL PLATE TREBLE RIVETED ALL FORE AND AFT.
 " Q.R. DECK SHEER STRAKE TREBLE FOR 1/2 LENGTH & DOUBLE BEYOND
 MAIN DECK SHEER STRAKE QUADRUPLE FOR 1/2 LENGTH & TO DOUBLE AT END
 REMAINDER OF SHEEL PLATES TREBLE FOR 1/2 LENGTH & TO DOUBLE AT ENDS.
 INNER BOTTOM CENTRE STRAKE AND MARGIN PLATE TO BE LAPPED & DOUBLE
 RIVETED ALL FORE AND AFT.
 REMAINDER OF PLATES ON TANK TOP TO BE LAPPED AND DOUBLE RIVETED
 FOR 1/2 LENGTH & TO SINGLE AT ENDS.
 STRINGER PLATE TREBLE RIVETED FOR 1/2 LENGTH & TO DOUBLE AT ENDS
 CENTRE GINDER PLATES TREBLE FOR 1/2 LENGTH & DOUBLE AT ENDS
 DECK BUTTS DOUBLE RIVETED FOR 1/2 LENGTH & SINGLE AT ENDS

SCANTLINGS

FRAMES TO MAIN DECK - 5 1/2 x 31.40 BA SPACED 22 1/2" APART
 FRAMES TO Q.R. DECK - 7 x 3 x 42" BA
 " IN PEAKS - 5" x 3" x 38" ANGLE
 FLOORS IN DOUBLE BOTTOM 33 x 32/30"
 " " BOILER SPACE 23 x 46"
 BULKHEADS 28" x 26"
 PILLARS TO BEAMS IN HOLD 3 1/2" DIA" AND AS PER RULE
 STEM 7 x 2 1/2" ROLLED BAR
 STERN FRAME PROPELLER POST 7 x 5" RUDDER POST 1 1/2 x 5"
 RUDDER SINGLE PLATE AS PER RULE

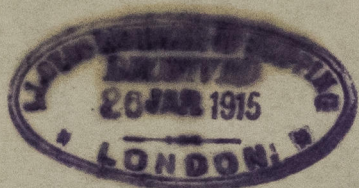


Messrs. G. Brown & Co.

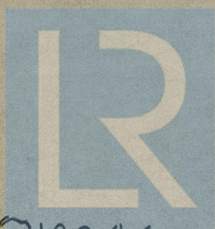
No 89. "Espelette"

Midship section of
ship as built

Grk. rpt. No. 16807.



RETAIN



© 2021

Lloyd's Register
Foundation

012246-012255-0084