

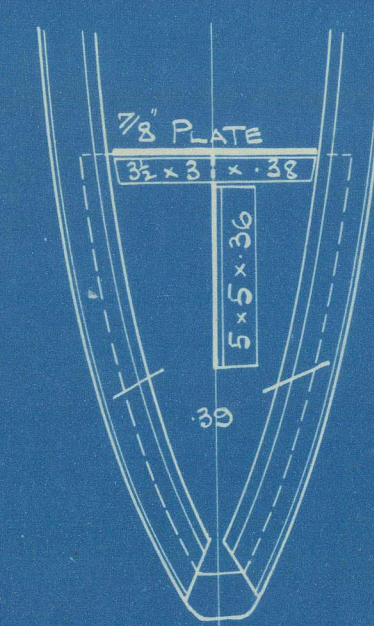
# SHIP N° 145. PROFILE & DECKS.

DIMENSIONS :- 173.5' x 28.54' x 170'

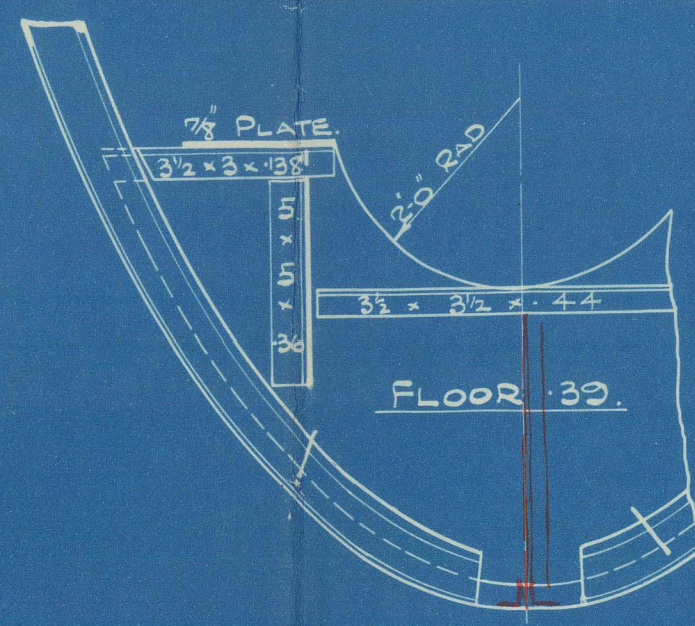
DRAFT 12' 11" MLD

CLASS + 100 A.I. WITH FREEBOARD

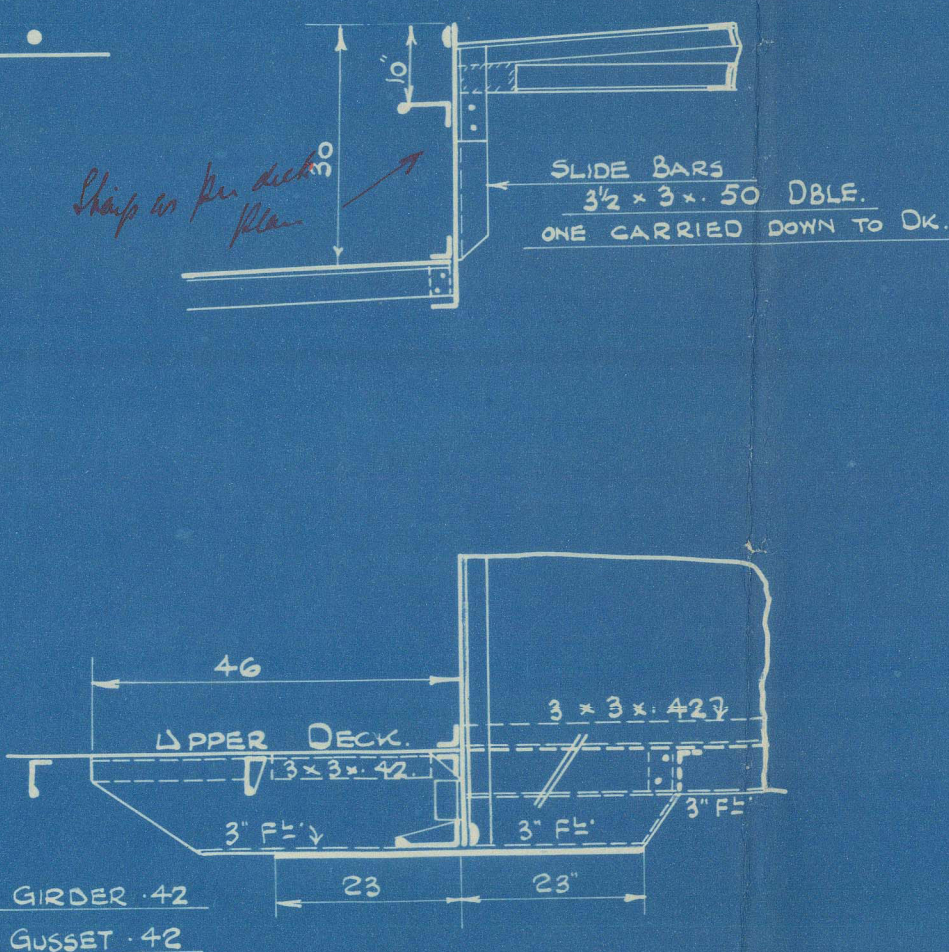
SCALE 1/8" = 1 FT.



FRAME N° 5



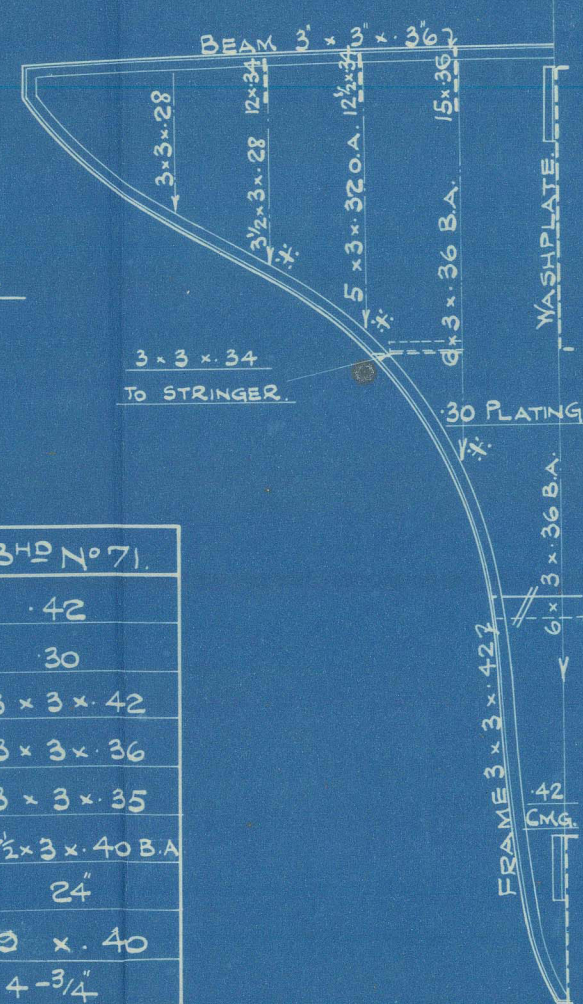
FRAME N° 10  
SCALE 1/2" = 1 FT.



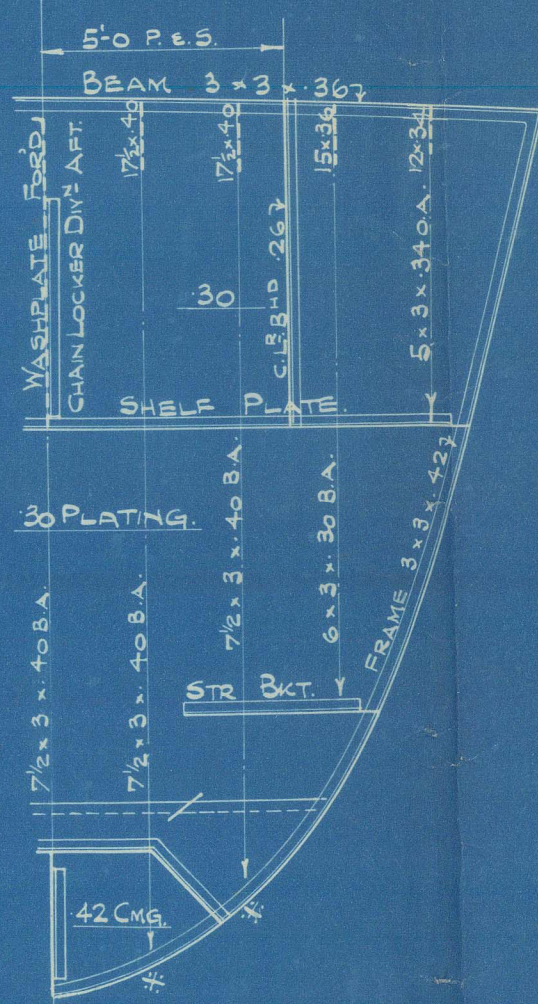
DETAIL OF GIRDERS & GUSSETS AT  
N° 1 HATCH CORNERS — UPPER DECK.

	BULK N° 4.	BULK N° 22.	BULK N° 71.
COAMING	42	41	42
PLATING	30	28 - 30	30
BULK FRAME	3 x 3 - 42	3 x 3 - 41	3 x 3 - 42
BEAM	3 x 3 - 36	3 x 3 - 36	3 x 3 - 36
TANK TOP BAR	-	3 x 3 - 35	3 x 3 - 35
STIFFERS	6 x 3 - 36 BA	6 x 3 - 36 BA	6 x 3 - 36 BA
SPACING	24"	32"	24"
BKTS.	15 x 36	15 x 36	15 x 40
RIVETS	3 - 3/4"	3 - 3/4"	4 - 3/4"

\* RIVETS IN ENDS OF  
STIFFERS CLOSED UP.

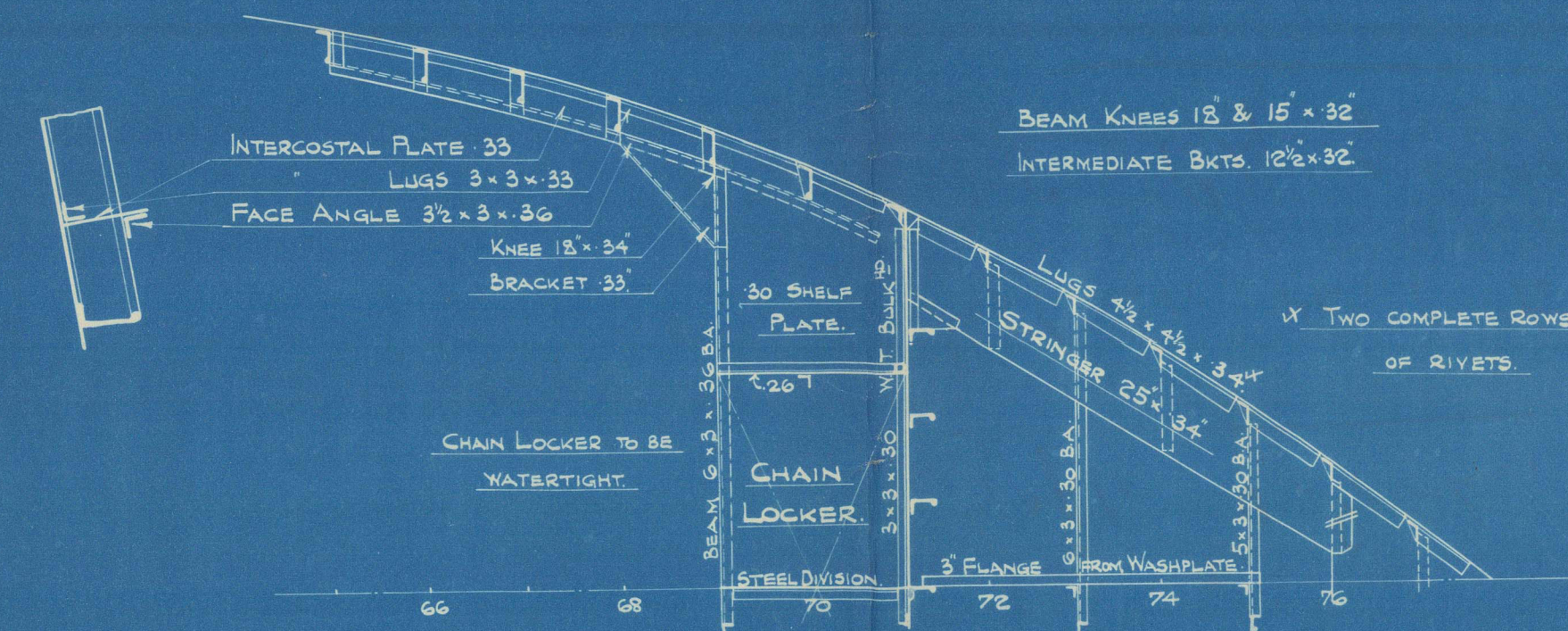


BULK N° 4  
LOOKING AFT.

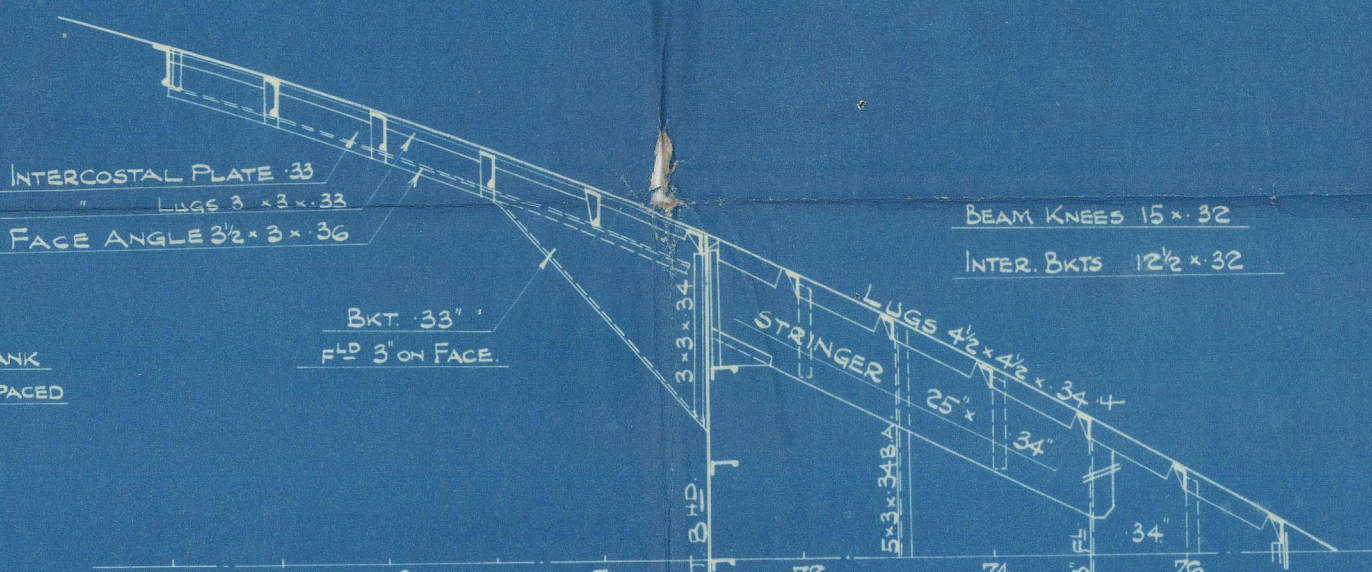


BULK N° 71  
LOOKING FWD.

SCALE 1/4" = 1 FT.

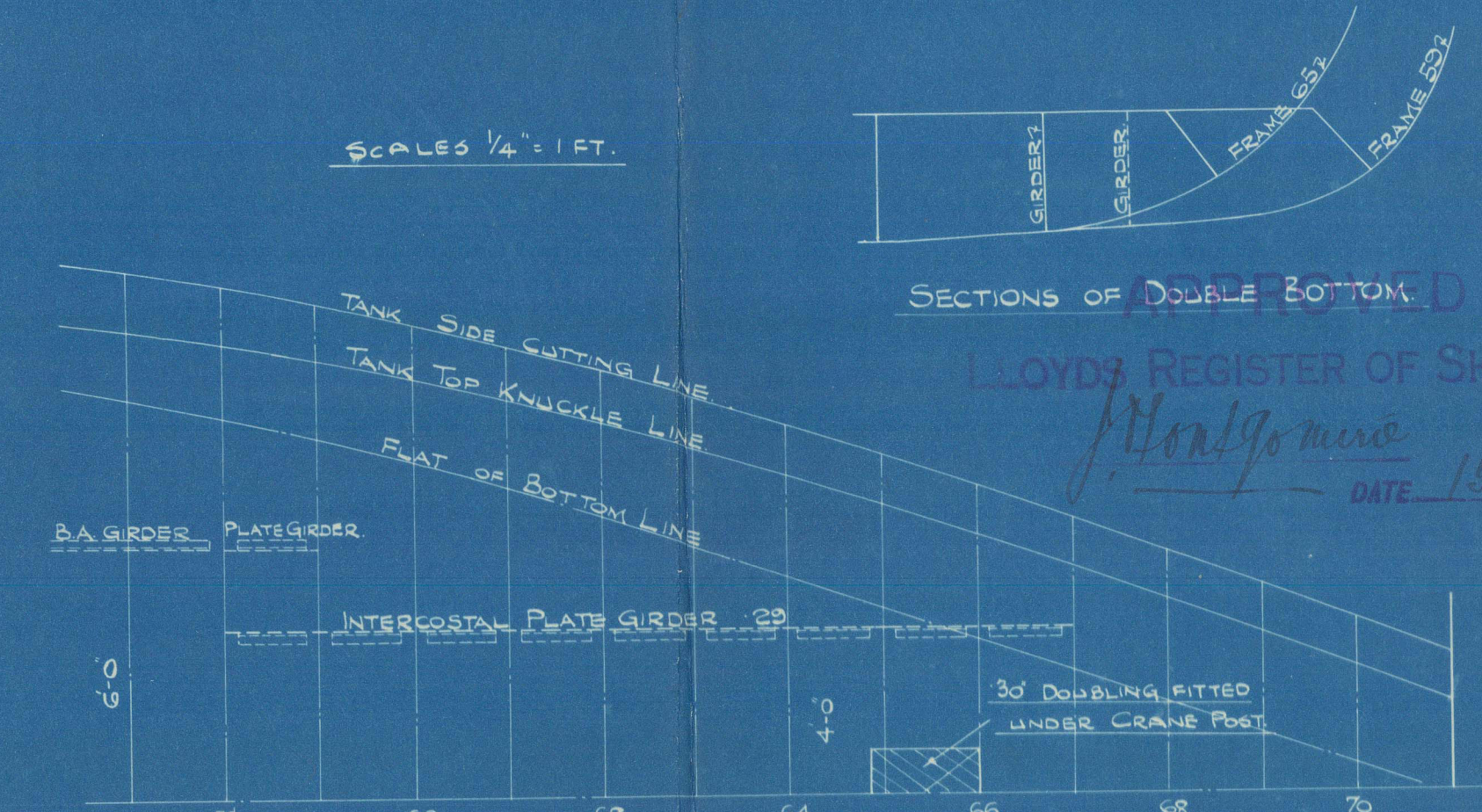
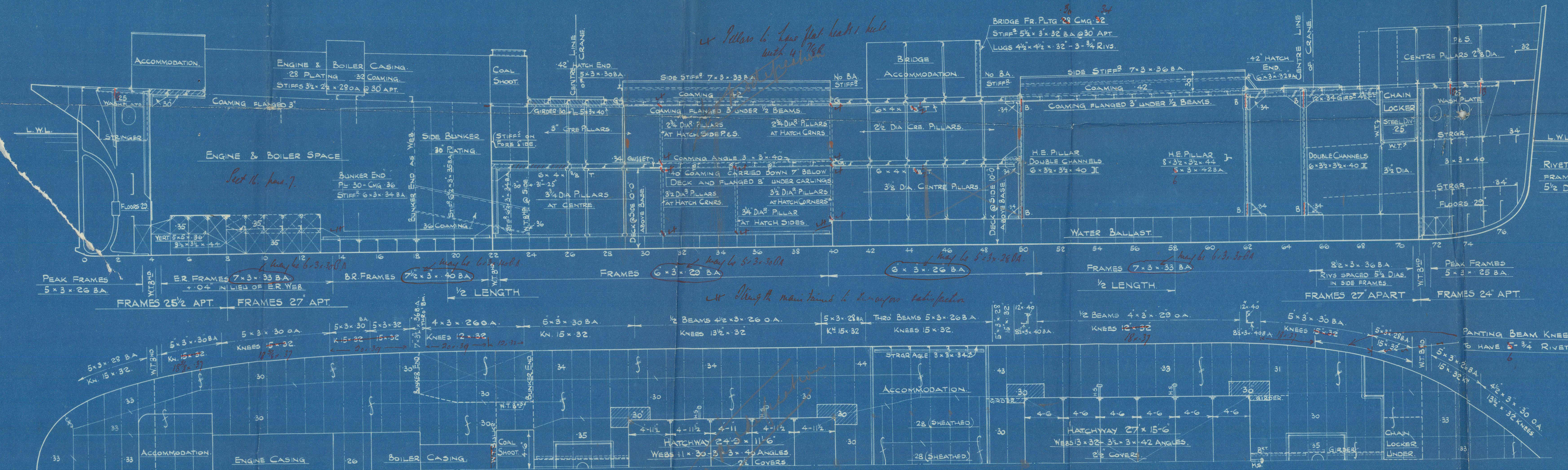


PLAN OF UPPER STRINGER.



PLAN OF LOWER STRINGER.

SCALE 1/4" = 1 FT.



SECTIONS OF DOUBLE BOTTOM

LOYD'S REGISTER OF SHIPPING

Montgomerie  
DATE 15.4.24

1/2 LENGTH — BOTTOM STRENGTHENING FORD OF 1/2 LENGTH.

TANK BOTTOM FRAMES 42 x 42 x 34 DOUBLE RIVETED TO SHELL 5/8" DIA APT. DBL RIV'D TO FLOOR @ 11" DIA.  
MIDSHIP THICKNESS 41 OF A & B STRAKES OF SHELL MAINTAINED FORWARD ON FLAT OF BOTTOM  
TO RULE POSITION OF COLLISION BULKHEAD.



PLAN N° 1732  
PRINT N° 5023

01256-00254-001



Burntisland S. B. C. & Co

N<sup>o</sup> 145

Profile of "City of London"  
Profile of Deck Lth. 17305

Duplicate vessel to N<sup>o</sup> 136

S.S. "City of Brussels"



© 2021

Lloyd's Register  
Foundation