

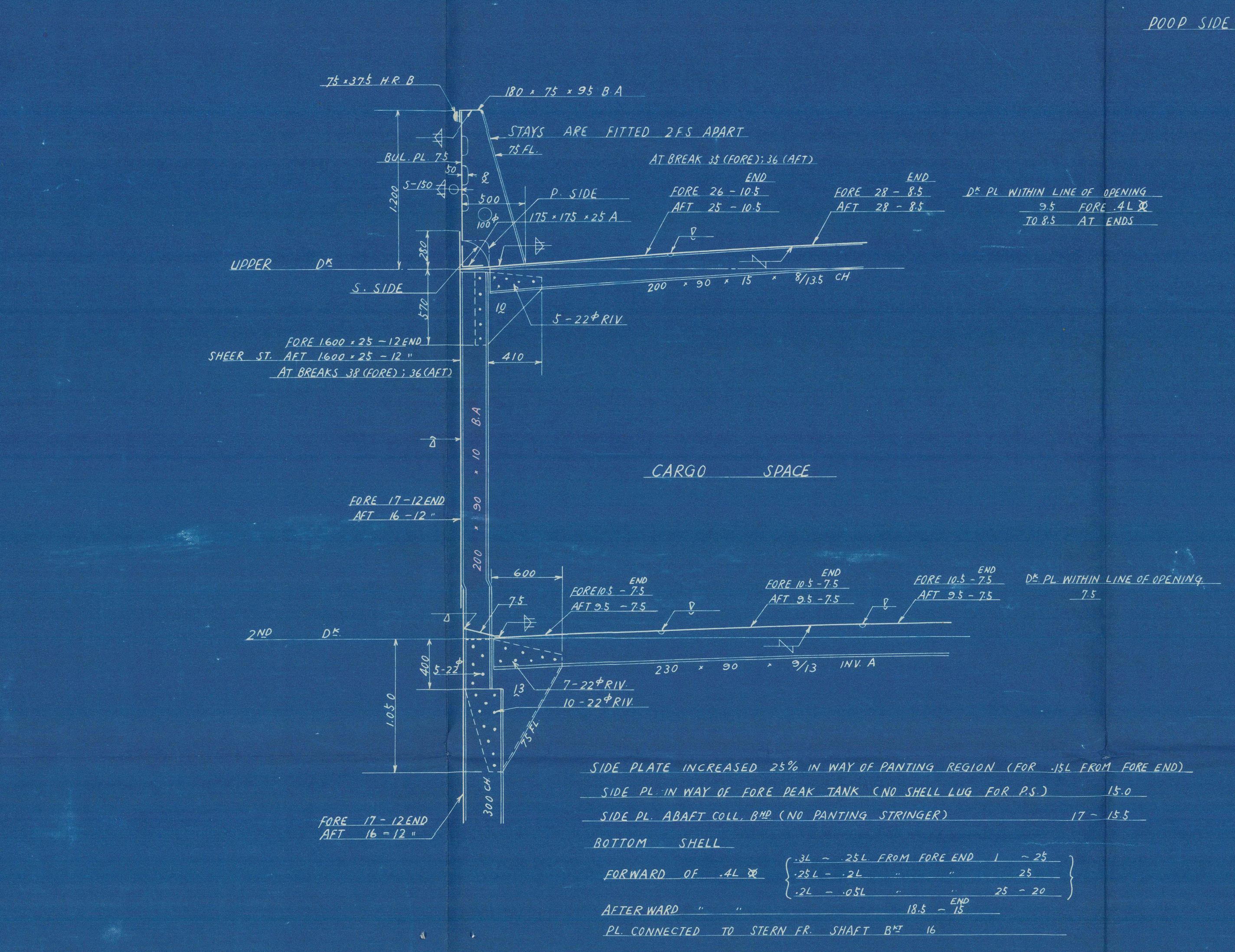
CARGO BOAT (TWIN SCREW)
LR CLASS * 100A1
NK CLASS * N.S.*

EQUIPMENT			
3 - ROWER	ANCHORS	STOCKLESS	* 244.5 COLLECTIVE
1 - STREAM	ANCHOR	ORDINARY	* 24.5 "EL STOCK
CHAIN	CABLE	CAST STEEL	123000 2 3/4" * 8
STREAM	STEEL WIRE	(6-24 JES GARDER)	123000 4 3/4" CIR (18" * 8)
TOW LINE	STEEL WIRE	(18" * 8)	123000 5 1/2" CIR (18" * 8)
HANGERS	2 MANILLA	100 MM 8" CIR	(18" * 8)
	3 STEEL WIRE	SPECIALLY FLEXIBLE	100 MM 8" CIR (24" * 8)
WAKES	2 MANILLA	100 MM 8" CIR	(18" * 8)
	2 STEEL WIRE	SPECIALLY FLEXIBLE	100 MM 2 3/4" CIR (12" * 8)

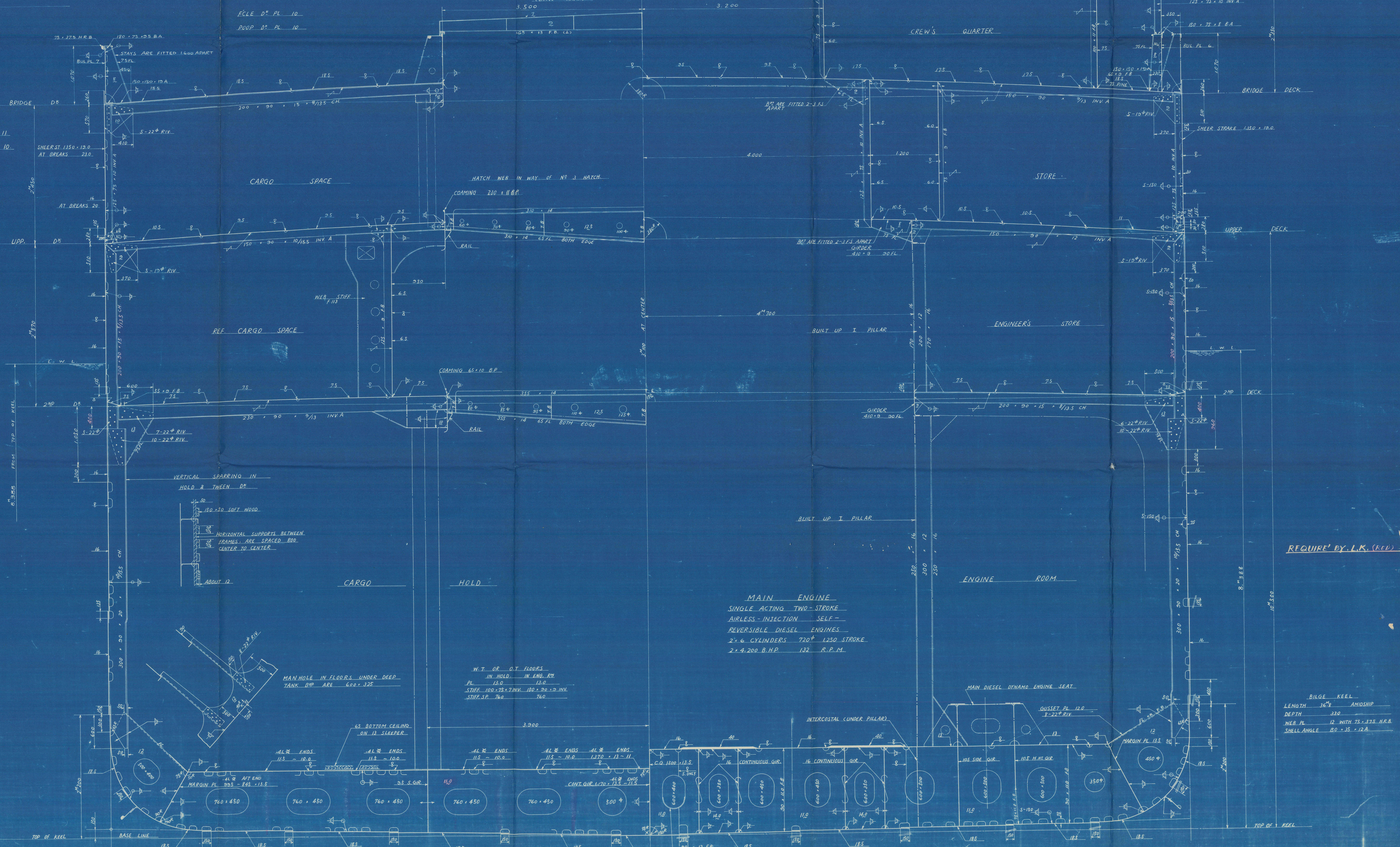
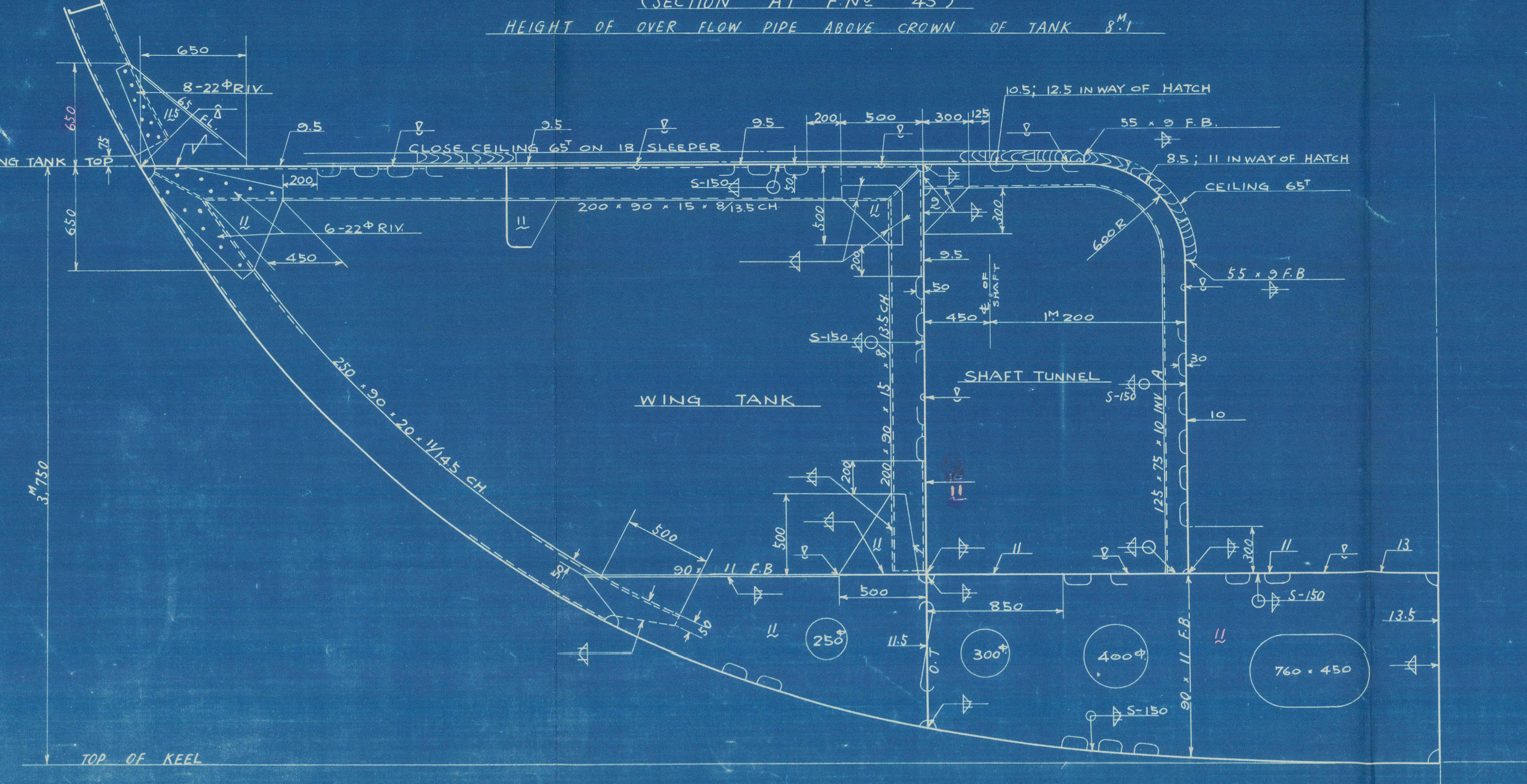
EQUIPMENT			
L. (R + D)	140	(19 + 10.5)	413.0
FILE	11.2	(2.3 + 7.5)	10.3
BRIDGE	6.00	(2.45 + 3.55)	1.6
POOP	7.1	(2.3 + 7.5)	12.3
BRIDGE DE HOUSE	30.4	(2.35 + 30)	35.7
UPP. BEL DE HOUSE	30.2	(2.45 + 30)	32.3
BOAT DE HOUSE	26.4	(2.45 + 30)	32.3
		MULTIPLY UNIT #17F.3	
		LENGTH = 47.13	

PRINCIPAL DIMENSIONS			
LENGTH	P.P.	140.00	(45.9" * 34)
BREADTH	MID	19.00	(62.34)
DEPTH	TO UPPER DE	10.50	(34.45)
DEPTH	TO BRIDGE DE	12.05	(42.49)
DRAFT		8.88	(27.52)
FRAME SPACE			
BOTH PEAKS		6.00	
2L FROM FORE END	TO COLL. B.M.	6.50	
ELSE WHERE		8.00	

SECTION IN WAY OF CLEAR OF BRIDGE



SECTION IN WAY OF WING FUEL OIL TANK



TOMISHIMA MARU L.R. N.K.

MIDSHIP SECTION (FINISHED PLAN)

SCALE 1:25

140.0' x 19.0' x 10.5'

REQUIRE' BY I.K. (REV.)

MAIN ENGINE
SINGLE ACTING TWO-STROKE
AIRLESS-INJECTION SELF-
REVERSIBLE DIESEL ENGINES
2 x 6 CYLINDERS 720° 1250 STROKE
2 x 4-200 B.H.P. 132 R.P.M.

WING FUEL OIL TANK
MAIN DIESEL ENGINE SEAT

INTERCOSTAL (UNDER PLATE)

CONT. GUL. 170° 115° 115°

W.T. OR D.T. FLOORS
IN HOLD IN ENG. RM
PL 14.0 13.0
STEE. 100 x 25 x 10 180 x 30 x 10 INV.
STEEL 10 700

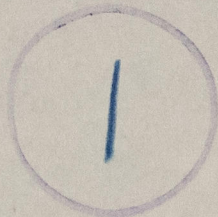
WING FUEL OIL TANK
MAIN DIESEL ENGINE SEAT

INTERCOSTAL (UNDER PLATE)

CONT. GUL. 170° 115° 115°

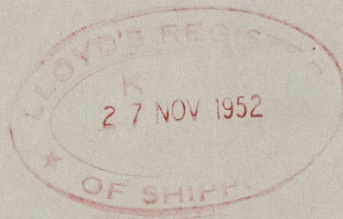
W.T. OR D.T. FLOORS
IN HOLD IN ENG. RM
PL 14.0 13.0
STEE. 100 x 25 x 10 180 x 30 x 10 INV.
STEEL 10 700

RECORDS DEPT.
LONDON



Tomishima Maru
LONDON COPY

Midship Section



Lloyd's Register
Foundation

012303-012314-0174