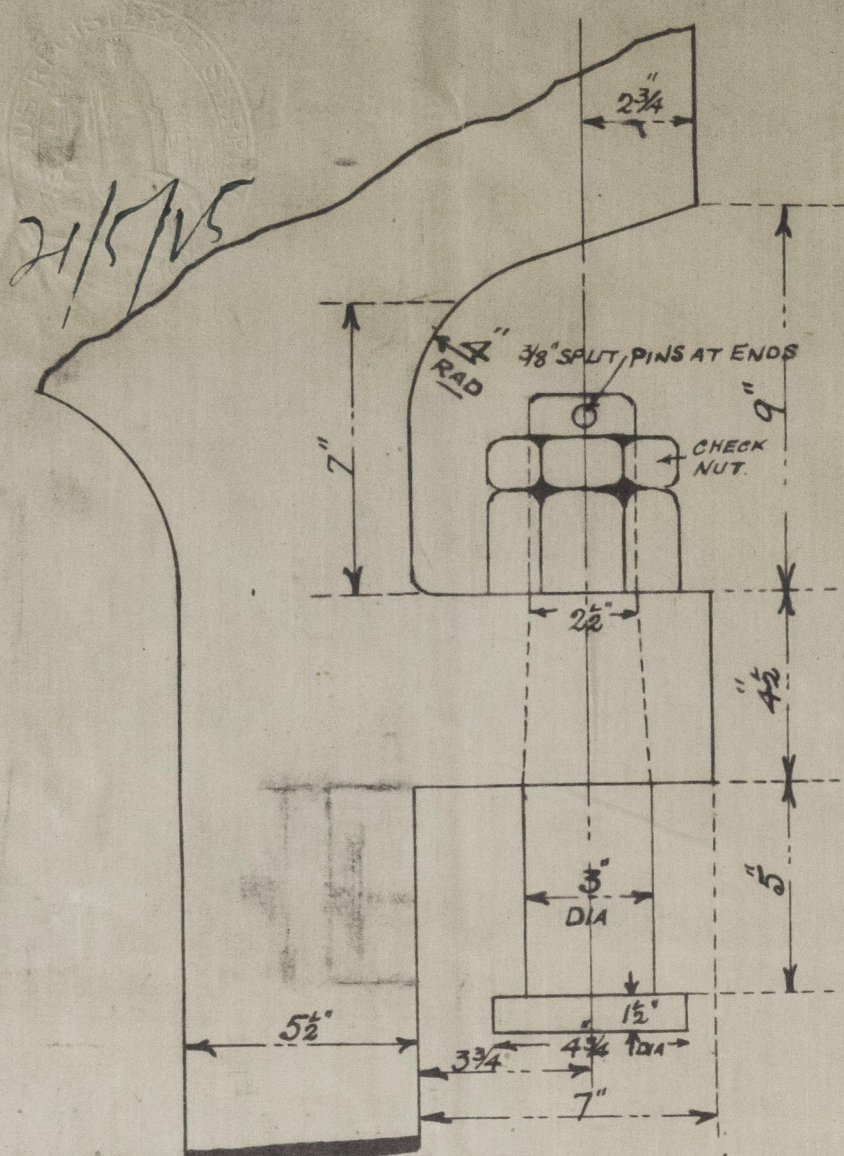


HOLES FOR  $\frac{7}{8}$ " DIA RIVETS  
SPACED 5 DIA. APART.

SCALE  $\frac{3}{4}" = 1 \text{ FOOT.}$



### ENLARGED VIEW OF PINTLES

NOTE:- THESE PINTLES ARE LOOSE. THE CENTRES ARE TO BE KEPT IN LINE WITH CENTRES OF HOLES IN STERN POST.

TOP PINTLE FITTED WITH LOCKING PIECE  
TO HAVE CHECK NUTS & 3/6 DIA SPLIT PINS AT ENDS

ALL PINTLES TO HAVE CHECK NUTS & 3/8" DIA SPLIT PINS AT ENDS

NUMERALS FOR RUDDER.

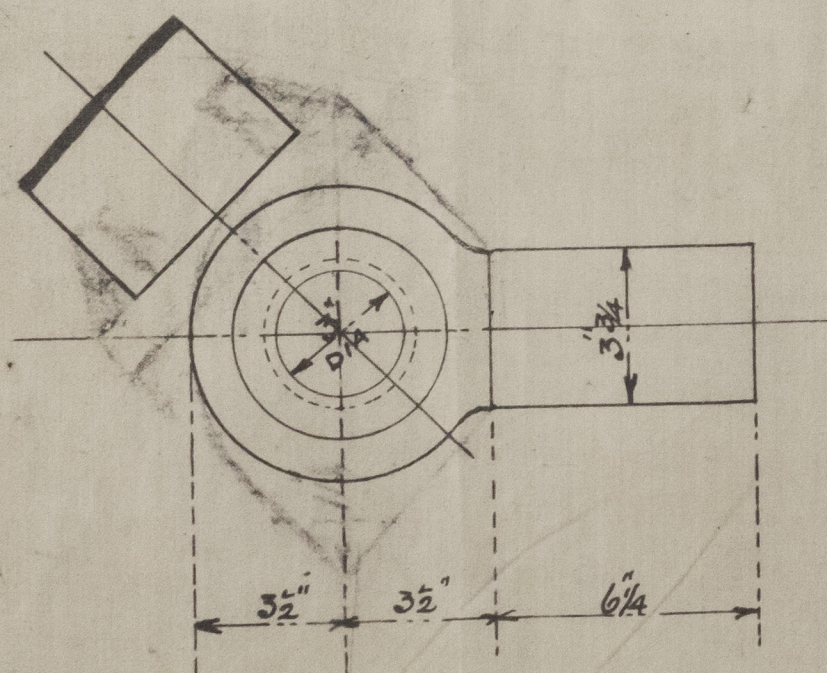
AREA TAKEN ABAFT FORE<sup>2</sup> EDGE OF MAIN PIECE 45.4

CG OF RUDDER ABAFT CENTRE OF PINTLES 2'-18"

$$A \times D = 99.62$$

14 1/16" CHAINS 1 1/8 RODS.

SPEED 11 KNOTS.



ENLARGED VIEW

RUDDER TO HEEL OVER TO AN ANGLE OF  $45^\circ$  EXACTLY.

SUBMITTED TO LLOYDS

APPROVED BY

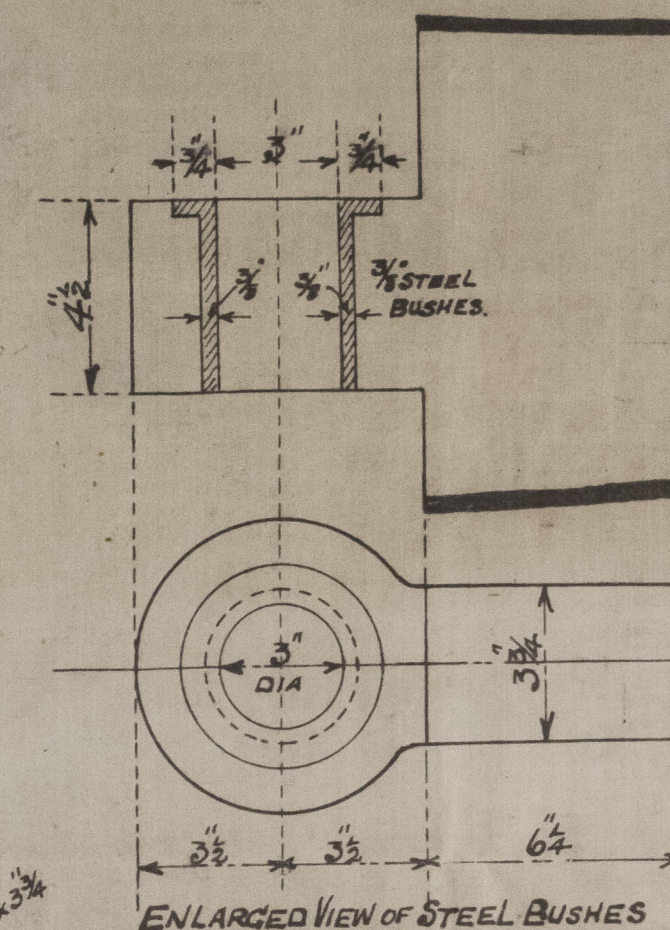
OWNERS 8/1/25

N<sup>os</sup> 476

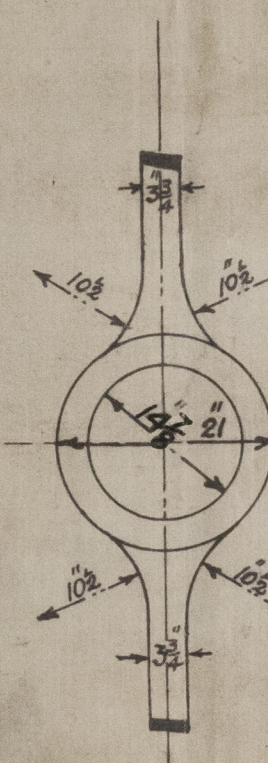
COOK. WELTON & GEMMELL LTD  
SHIPBUILDERS  
BEVERLEY.

HOLES PITCHED  $1\frac{3}{4}$ " & 2" FROM INNER EDGE  
OF POST. HOLES DRILLED FOR 1" DIA RIVETS  
5 DIA<sup>1</sup> APART. ✓

SCALE  $\frac{3}{4}" = 1 \text{ FOOT}$ .



ENLARGED VIEW OF STEEL BUSHES



NOTE  
HOLE BORED EXACTLY  
TO SIZE GIVEN, VIZ:- 14%

CENTRE OF SHAFT ABOVE  
TOP OF KEEL. AT AFT  
SIDE OF STEERING POST

BOARD ON  
ROBITE SID

1'-6"

3/8" CHECKS

© 20

11

377-012

Four



Amended plan of  
Stem frame & scudder  
for Hook, Mellon &  
Gemmells No 2746

<sup>1/2</sup> 5 Jupyter. <sup>1/2</sup> 9000000000  
Hall Report No. 765  
- 84



© 2021

Lloyd's Register  
Foundation

012377-012385-0147