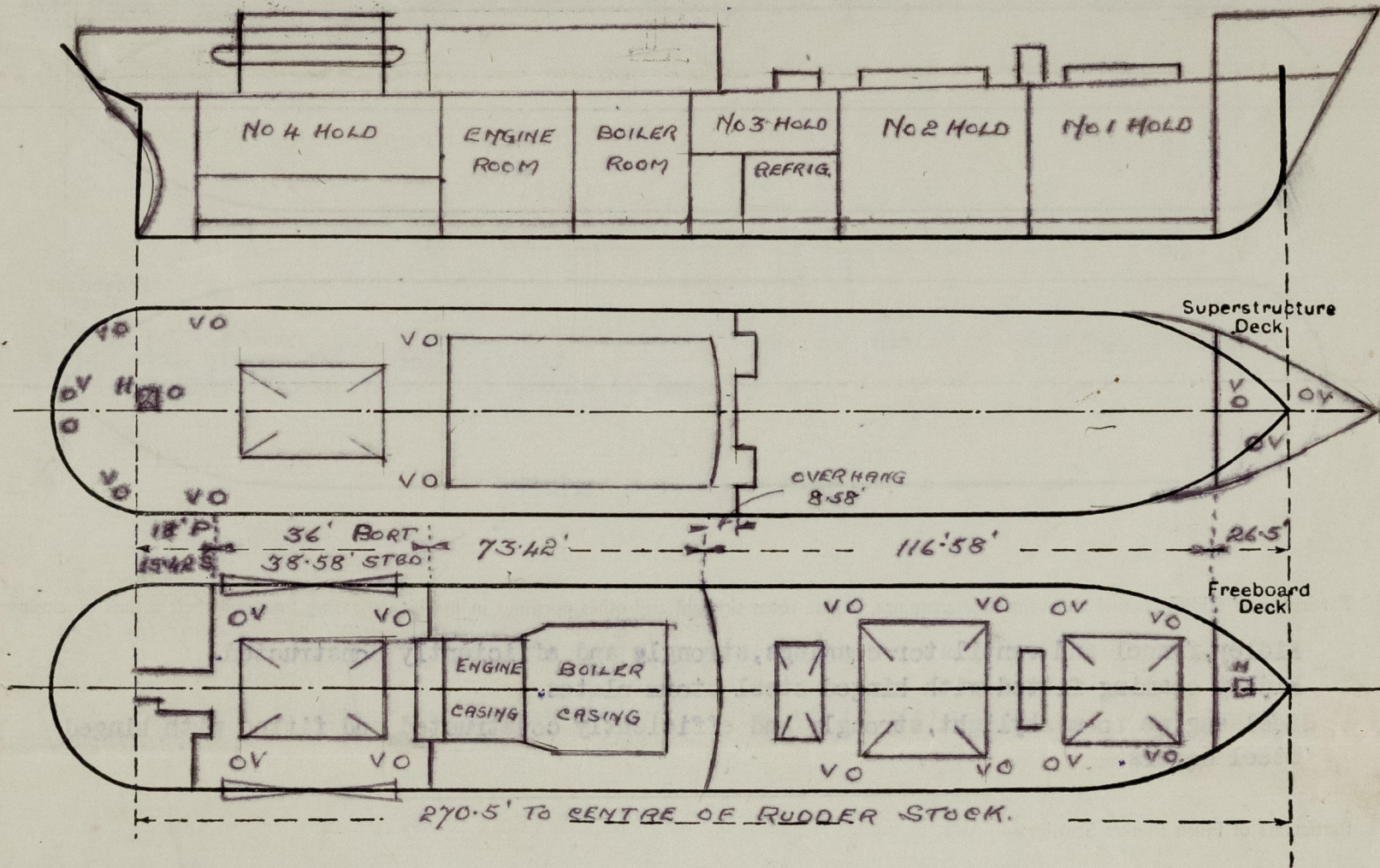


Lloyd's Register of Shipping.
SURVEYS FOR FREEBOARD.
(CONDITIONS OF ASSIGNMENT.)

Ship's Name "DENMAN" Port of Survey NEWCASTLE, N.S.W.
Official Number Surveyor's Signature D.B. E. Elders
Nationality and Port of Registry BRITISH, NEWCASTLE, N.S.W. Date of Survey WHILST BUILDING

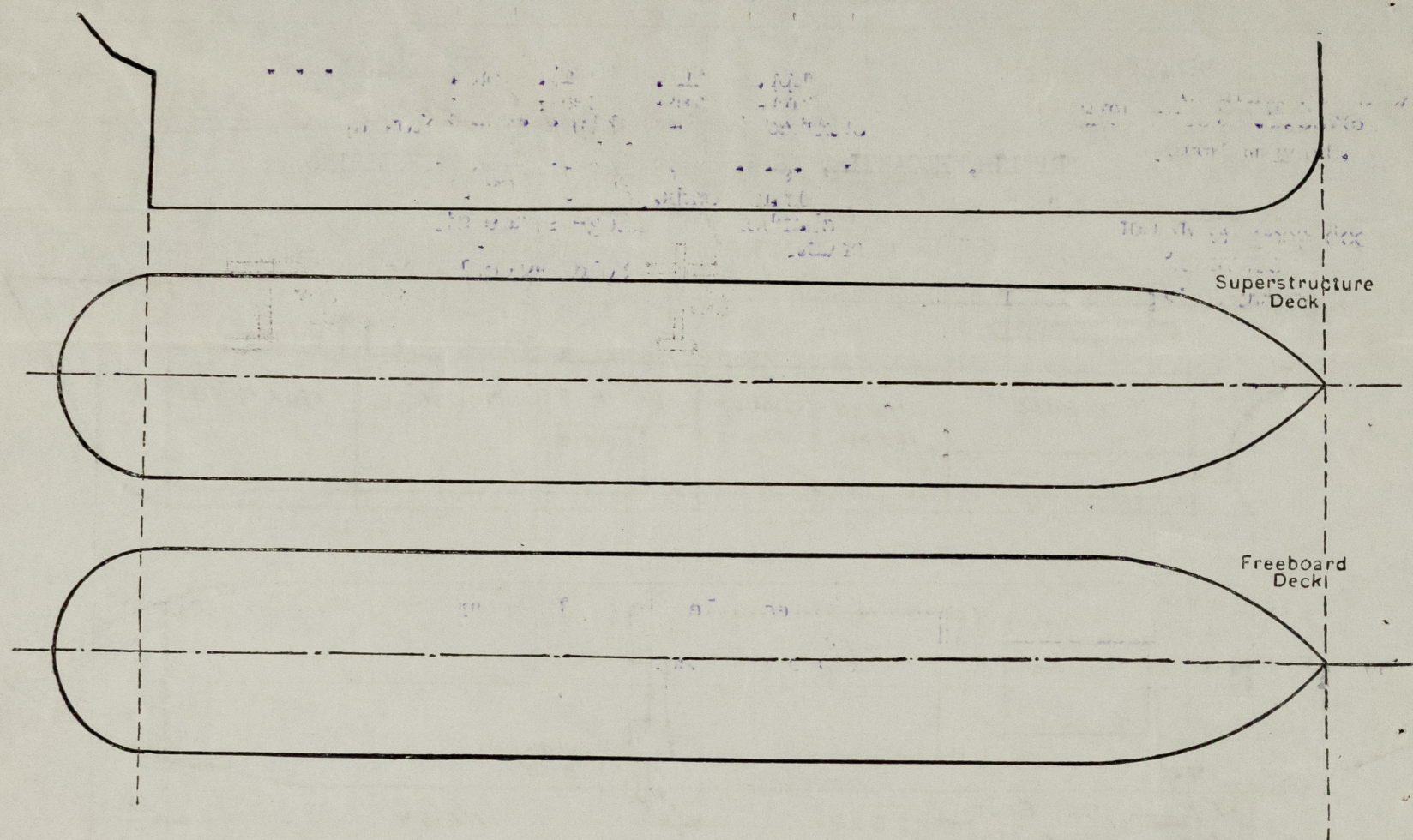
Disposition and dimensions of superstructures, trunks, deckhouses and machinery casings to be inserted in the diagrams and tabular statement:—



Particulars of Superstructures, Trunks, Casings, Deckhouses								
	Coaming	Plating	Stiffeners	Spacing	End Attachments of Stiffeners	Size of Openings	Height of Sills	Height of Casings
Poop Bulkhead	.31	.31	5x3x3/8 L	29"	unattached	2'6" x 4'6" 5' x 2'-3"	18" & 24"	7'-6"
Raised Quarter Deck Bulkhead								
Bridge, After Bulkhead	.28	.28	4x3x5/16 L	28"	unattached	4'10" x 2'2"	20"	7'-6"
Bridge, Forward Bulkhead	.38	.38	6x3x3x.25 C	28"	Welded top & bottom	4'6" x 2'6"	18"	7'-6"
Forecastle Bulkhead	.28	.28	4x3x5/16 L	30"	unattached	5' x 3'	15"	7'-6"
Trunk, Aft								
Trunk, Forward								
Exposed Machinery Casings on Freeboard or Raised Quarter Decks								
Exposed Machinery Casings on Superstructure Decks								
Machinery Casings within Superstructures not fitted with Class I Closing Appliances	.30	.26	3x3x1/4 L	30"	continuous	5' x 2'6"	18"	7'-6"
Deckhouses on Flush Deck Ships								
Particulars of Closing Appliances (state if capable of being manipulated from both sides)								
Poop Bulkhead	Hinged steel and hardwood doors operated from both sides.							
Raised Quarter Deck Bulkhead								
Bridge, After Bulkhead	Hinged hardwood doors operated from both sides.							
Bridge, Forward Bulkhead	Hinged steel watertight doors operated from both sides.							
Forecastle Bulkhead	2 1/2" storm boards full height in welded channels.							
Exposed Machinery Casings on Freeboard or Raised Quarter Decks								
Exposed Machinery Casings on Superstructure Decks								
Machinery Casings within Superstructures not fitted with Class I Closing Appliances	Hinged steel doors operated from both sides.							
Deckhouses on Flush Deck Ships								

PARTICULARS OF PROTECTION TO OPENINGS, ETC.

The following diagrams should be used to indicate the positions of cargo and coaling hatchways, gangway, cargo and coaling ports, ventilators, companion-ways, etc., which would affect the seaworthiness of the ship:—



Particulars of fiddle, funnel and ventilator coamings, engine room skylight and other openings in machinery casing tops and their means of closing:—

Fidley,funnel and ventilator coamings,strongly and efficiently constructed.
Fidley coaming fitted with hinged steel storm plates.
Steel engine room skylight,strongly and efficiently constructed and fitted with hinged steel covers.

Particulars of Flush Bunker Scuttles:—

None fitted.

Particulars of Companionways:— Entrance to No's.1 & 2 Holds in strongly constructed steel mast house, hinged steel doors operated from both sides.Door Openings 4'-6" x 2'-0",sills 24",openings in deck fitted with hinged steel W.T.covers.Entrance to No.4 Hold,tunnel escape and after store in strongly constructed steel trunks at poop front door openings 2' & 2'-3" x 4' & 5',sills 18" & 24"

Particulars of Ventilators in exposed positions on freeboard and superstructure decks:—

Forecastle Deck:—Four @ 6" diam.x 36" high x .30 to Forecastle stores.
For'd.Well :-Four @ 15" diam.x 36"high x .36 to No.1 Hold.
For'd.Well :-Four @ 15" diam.x 36"high x .36 to No.2 hold.
Bridge Deck :-Two @ 6" diam. x 30"high x .30 accommodation.
After Well :-Four @ 15" diam.x 36"high x .36 to No.4 Hold.
Poop Deck :-Five @ 6" diam.x 30"high x .30 Poop spaces & stewards store.
One @ 9" diam.x 30"high x .30 Hospital.
Two @ 12" diam.x 30"high x .30 Steering Compartment.

ALL VENTILATORS PROVIDED WITH EFFICIENT CLOSING APPLIANCES

claring Appliances

Particulars of Air Pipes in exposed positions on freeboard, raised quarter, or superstructure decks:—

Air Pipes to Peak,Deep and D.B.Tanks on Bridge,Poop and Fcile Decks 18" to lip.
Upper Deck 36" to lip.

All Air Pipes fitted with wood plugs and/or gauze and canvas covers.

Keep chains on all air pipe plugs.

Particulars of Gangway Cargo and Coaling Ports:—

None fitted.

Denman

Particulars of Scuppers and Sanitary Discharge Pipes:— Deck scuppers in wells also on bridge and poop decks carried through ship's side below upper deck,no storm valves fitted.
Scuppers for accommodation spaces carried through ship's side below upper deck and fitted with storm valves.
Sanitary discharges from accommodation spaces carried through ship's side below upper deck and fitted with storm valves and traps at inner ends.
Scuppers from domestic refrigerated chambers in bridge space similar to sanitary discharges but fitted with screwed caps at inner ends.
Scuppers from refrigerated cargo chambers in No.3 hold space,led to hold bilge with traps and non-return flaps at lower end.

Particulars of Side Scuttles:—

All side scuttles in poop,bridge and forecastle sides. 12" diameter strongly constructed and fitted with hinged steel deadlights.
No side scuttles fitted below the freeboard deck.

Vertical distance of Sill of lowest Side Scuttle above top of keel 26'-4"

Particulars of Guard Rails:—

For'd.and After Wells:—Steel bulwarks 3'-6" high,efficiently stayed.
Bridge Sides :- " " 3'-6" "
Bridge Ends :-Open rails 3'-6" high with 3 rails,stanchions spaced about 5' apart.
Forecastle side ends :- " " 3'-6" " " " " " " " 5'-6" apart.
Poop sides :- " " 3'-6" " " " " " " " 5'-6" apart.

Particulars of Gangways, Lifelines, etc.:—

provided. Provision made for rigging life lines in forward well and suitable life lines

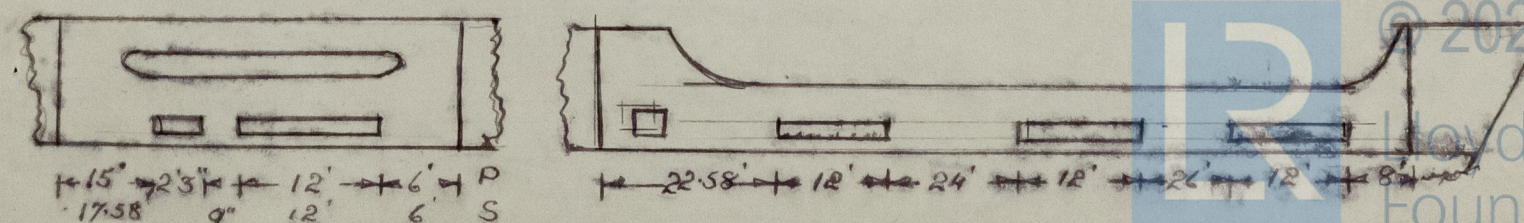
Particulars of Freeing Arrangements						
	Length of Bulwark	Height of Bulwark	Size of Freeing Ports	Number each side	Area each side	Rule area each side
After Well	36.0' 38.58'	3'-6"	12' x 9" 2'-3"x 9"	One One	10.68 sq.ft.	10.5 sq.ft. 10.36
Forward Well	116.58'	3'-6"	12' x 9" 18"x 14"	Three One	28.75 sq.ft.	23.5 sq.ft. 23.32

State position of each freeing port After Well:— See below.

(F. and A. position and height above deck edge) Forward Well:—Height of port above deck edge 8"

State whether the freeing ports are fitted with shutters, bars, or rails, and give particulars of such:— Fwd.well rail in 18" x 14" port only.
After well:—shutters fitted.

Additional area where sheer is less than standard.



PARTICULARS OF PROTECTION TO OPENINGS, ETC.

HATCHWAYS ON FREEBOARD AND SUPERSTRUCTURE DECKS									
Description of Hatchway	Upper Deck				Poop Deck	Hatch in forecastle to	chain locker.	24" x 20" coaming 12" x 3/8" steel W.T. cover secured by screw toggles.	Hatch on poop deck to store 30" x 30" coaming 18" x 3/8"
	No. 1	No. 2	No. 3	No. 4					
Dimensions of Hatchway	34'x18'	34'x20'	9'-6"x6'	22'x16'					
COAMINGS { Height above Deck Thickness { Sides Stiffeners { Ends Brackets, Stays	30" 4 1/2" 4 1/2" 9" & 11" B.A. angle	30" 4 1/2" 4 1/2" 11" B.A.	30" 4 1/2" 4 1/2" -	30" 4 1/2" 4 1/2" 7" & 9" B.A.					
HATCH BEAMS { Number Spacing Scantling and Sketch Bearing Surface	7 4.25' 9x1 1/2" 16x.36" 9x1 1/2" 3"	7 4.25' 9x1 1/2" 17 1/2"x36" 9x1 1/2" 3"	None equal 3"x3" 3"x3" 3"x3/8"	3 5.66' 11"x.30" 9"x1 1/2" 5 5/8" x 7/16" 3"					
FORE AND AFTERS { Number Spacing Unsupported Lengths Scantling* and Sketch Bearing Surface			N O N	No. 4 trunked from upper deck. Upper deck coaming .40 Trunk .34 Vertical stiffeners 2x3x3/8 at 24" spacing. Toe welded to plate & carried to top of coaming.				3/8" steel W.T. cover secured by wedge catches.	
HATCH COVERS { Material Thickness How fitted Bearing Surface	Pine 3" 3 & 1 1/2" 24" 2	Pine 3" 3 & 1 1/2" 24" 2	Pine 3" 3" 24" 2	Pine 3" Aft 3 & 4 1/2" 24" 2					
Spacing of Cleats	24"	24"	24"	24"					
Number of Tarpaulins	2	2	2	2					
<p>*Are wood fore and afters steel shod at all bearing surfaces? -</p> <p>Are battens and wedges efficient and in good condition? Yes</p> <p>Are tarpaulins in good condition and in accordance with rule requirements? Yes</p> <p>Are lashings provided in accordance with rule requirements? Locking bars fitted to each section of hatch covers.</p>									

Particulars of any special features:—

Endorsement at first survey and at surveys for renewal of Certificate:—

The fittings and appliances are in accordance with the particulars shown on this form (or as now modified) and are in good condition.



© 2021

Lloyd's Register
Foundation