

LLOYD'S REGISTER OF SHIPPING

Index No. _____
(For London Office only.)

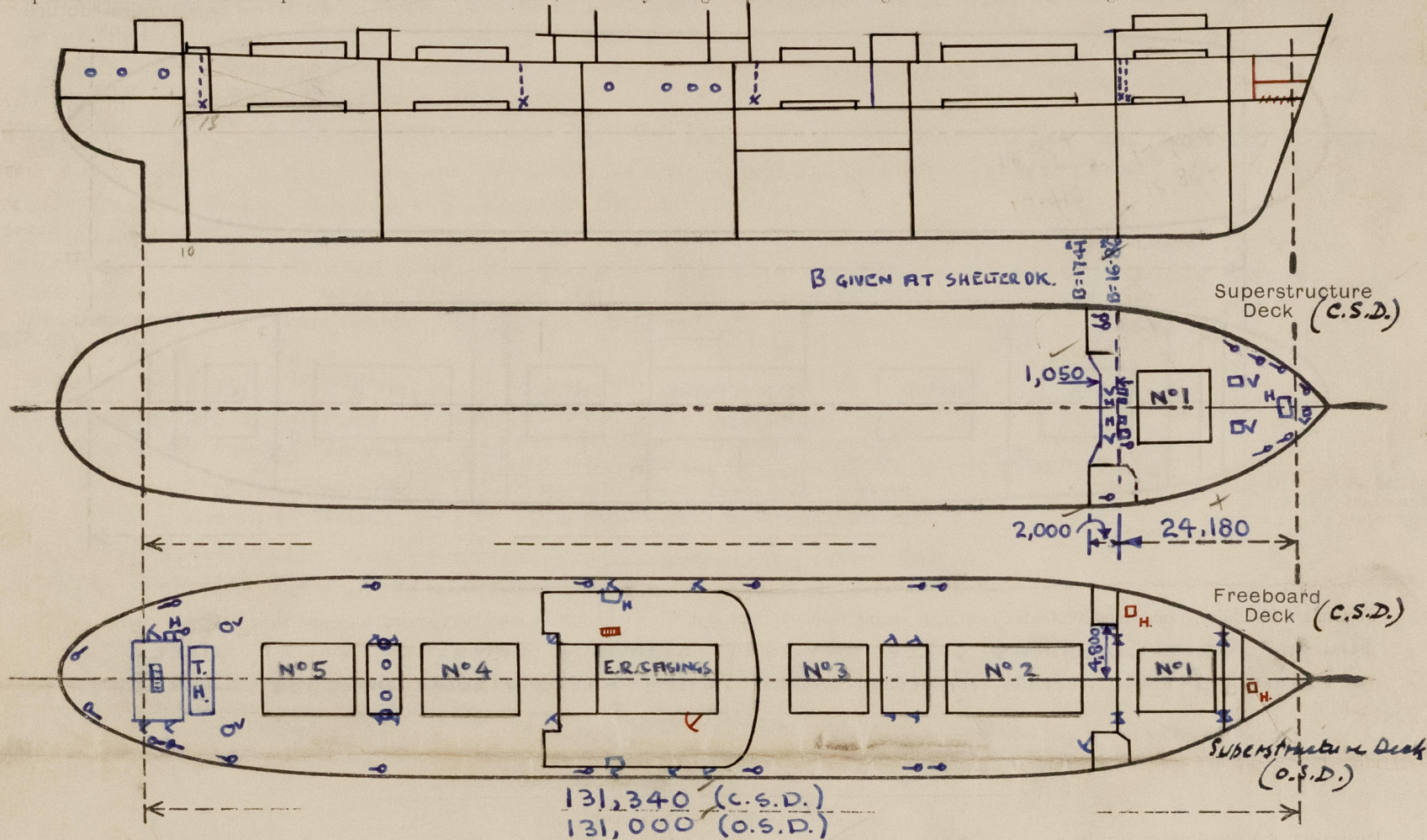
UNITED WITH THE BRITISH CORPORATION REGISTER

SURVEYS FOR FREEBOARD.

(CONDITIONS OF ASSIGNMENT.)

Ship's Name M.V. NORWID. Port of Survey ROUEN.
 Official Number Surveyor's Signature W. L. Adamson.
 Nationality and Port of Registry POLISH, GDYNIA. Date of Survey Whilst Building

Disposition and dimensions of superstructures, trunks, deckhouses, machinery casings and wood sheathing to be inserted in the diagrams and tabular statement:—



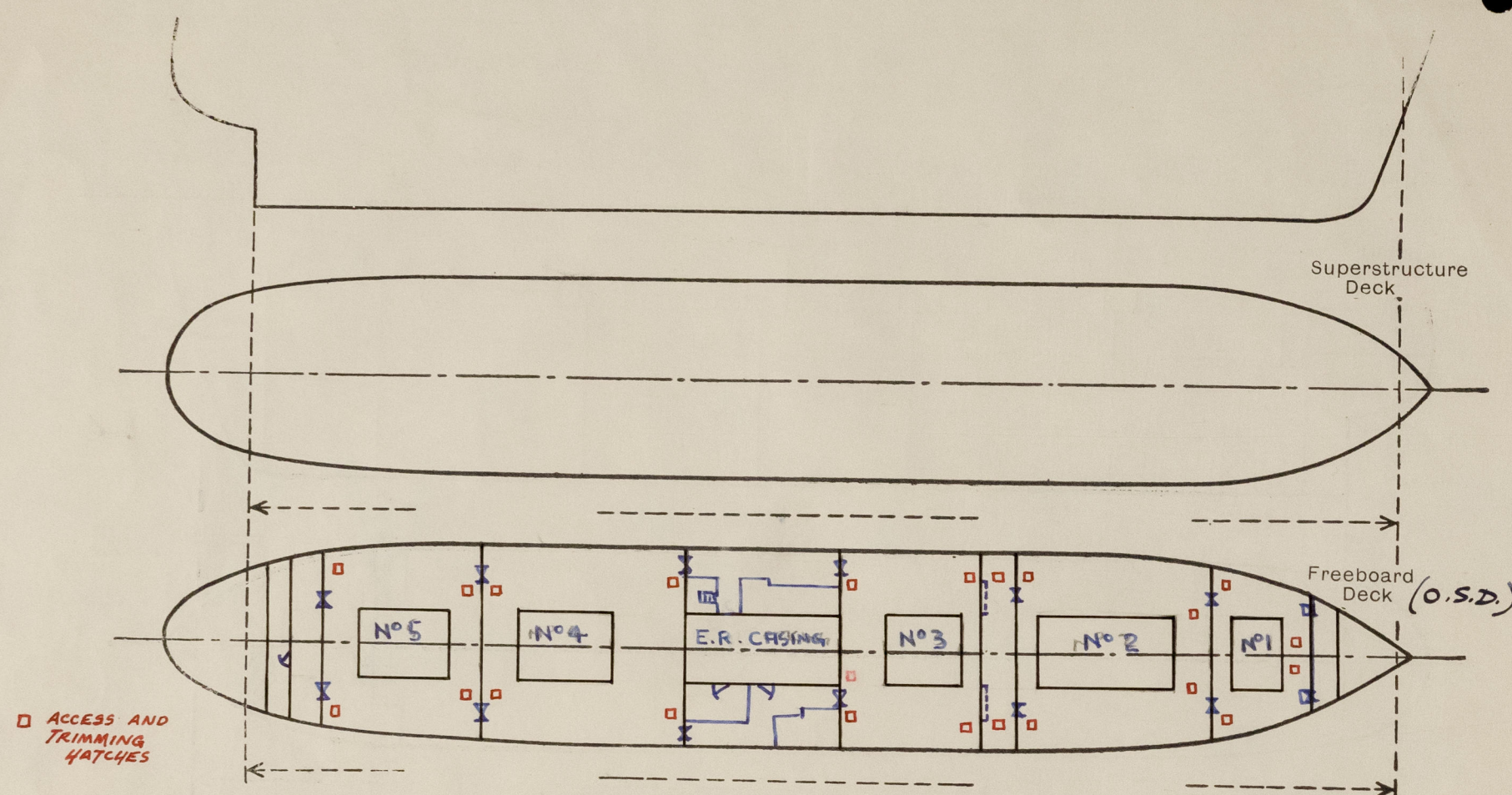
Particulars of Superstructures, Trunks, Casings, Deckhouses.							DIMENSIONS IN METRIC SYSTEM	
	Coaming	Plating	Stiffeners	Spacing	End Attachments of Stiffeners	Size of Openings	Height of Sills	Height, Beam to Beam LEAST.
Poop Bulkhead (O.S.D.)...	7.5	6.5	175 x 9 F 80 x 50 x 6 T.T.P.	610	BKTP	1e 1770 x 600	1,930	3,850
Raised Quarter Deck Bulkhead ... F.C.L.E.								
Bridge, After Bulkhead (O.S.D.)	6.5	6.5	150 x 8 F	730	BKTP TOP WELDED BOTTOM	2e 1280 x 975	610	3,830
Bridge, Forward Bulkhead...								
Forecastle Bulkhead... (C.S.D.)	8	8	150 x 8 F 80 x 60 x 8 T.T.P.	400/750	WELDED BOTTOM BKTP TOP	2e 1,220 x 915 2e 1,390 x 600	610	2,400
Trunk, Aft ...								
Trunk, Forward ...								
Exposed Machinery Casings on Freeboard or Raised Quarter Decks...								
Exposed Machinery Casings on Superstructure Decks ...	8	8	70 x 50 x 6 T.T.P.	730	WELDED.	NONE	✓	
Machinery Casings within Superstructures not fitted with Class I Closing Appliances ...	6.5	6.5	70 x 50 x 6 T.T.P. 80 x 60 x 8 T.T.P. WITH AT EVERY 3rd 100 x 75 x 9 T.T.P.	722	WELDED.	NONE	✓	2,600
MIDSHIP Deckhouses and Pump Room Entrances	11	9.5	200 x 10 F 100 x 75 x 9 T.T.P.	717/730	WELDED.	2e 1700 x 630	300	3,300
	8	8	80 x 60 x 8 T.T.P.	730	BKTP AT TOP. WELDED	NONE	✓	2,600
						Bottom. 4e 1390 x 700 1e 1390 x 630 2e 1390 x 790	610 610 610	2,600 2,600 2,600

Particulars of Closing Appliances (state if capable of being manipulated from both sides).

Poop Bulkhead (O.S.D.)...	1-HINGED STEEL DOOR OPERATED BOTH SIDES. ?
Raised Quarter Deck Bulkhead ... F.C.L.E.	
Bridge, After Bulkhead (O.S.D.)	PORTABLE PLATES SECURED BY STUD BOLTS WELDED TO PLATES SPACED 305 m/m.
Bridge, Forward Bulkhead ...	
Forecastle Bulkhead... (C.S.D.)	2 PORTABLE W.T. COVERS SECURED BY WELDED STUD BOLTS SPACED 305 m/m.
Exposed Machinery Casings on Freeboard or Raised Quarter Decks...	2-HINGED STEEL DOORS OPERATED BOTH SIDES. ✓
Exposed Machinery Casings on Superstructure Decks ...	No OPENINGS
Machinery Casings within Superstructures not fitted with Class I Closing Appliances ...	
MIDSHIP Deckhouses and Pump Room Entrances	2-HINGED STEEL DOORS OPERATED BOTH SIDES 2-HINGED WOOD DOORS AT SIDES 2-HINGED WOOD DOORS AT AFTEND } OPERABLE BOTH SIDES. 3-HINGED STEEL DOORS AT SIDES

PARTICULARS OF PROTECTION TO OPENINGS, ETC.

The following diagrams should be used to indicate the positions of cargo and coaling hatchways, gangway, cargo and coaling ports, side scuttles, scuppers, ventilators, companionways, etc., which would affect the seaworthiness of the ship :-



Particulars of fiddle, funnel and ventilator coamings, engine room skylight and other openings in machinery casing tops and their means of closing :-
FUNNEL, VENT COAMINGS & E.R. SKYLIGHT STRONGLY CONSTRUCTED OF STEEL.
SKYLIGHT FITTED WITH HINGED STEEL FLAPS WITH STRONG BULLEYE LIGHTS.

Particulars of Flush Bunker Scuttles :-

NONE

Particulars of Companionways :-

(including those incorporated in deckhouses and masts)

ACCESS TO ENGINE ROOM, STRONG HINGED STEEL DOOR, 300" SILL. } ENCLOSED IN STRONG STEEL DECKHOUSE
 ACCESS TO TWEEN DK. STORES & SPACES 610" SILL. } FITTED WITH EFFICIENT CLOSING APPARATUS.
 ACCESS TO STEERING GEAR & BOSUN STORE, NO SILL. ENCLOSED IN STRONG STEEL DECKHOUSE FITTED
 WITH ~~WOOD DOORS~~ **WOOD DOORS 50" THICK, 610 MM. SILL.** (ALL COMPANIONWAY DOORS O.B.S.)

Particulars of Ventilators in exposed positions on freeboard and superstructure decks :-

FORECASTLE DECK.

2 e 720 x 550 x 10" THICK. - 960" HIGH. (HINGED STEEL COVER WITH CANVAS COVER) } GOOSENECK VENTS FITTED WITH
 2 e 700 x 700 x 10" THICK. - 960" HIGH. } HINGED STEEL COVERS.
 1 e 230 x 230 x 6" THICK. - 960" HIGH. (CANVAS COVER) - MUSHROOM.
 4 e 150" DIA. x 960" HIGH. GOOSENECK
 1 e 100" DIA. x 960" HIGH. GOOSENECK

FREEBOARD DECK.

2 e 640 x 640 x 10" THICK. - 940" HIGH.
 4 e 150" DIA. x 1,000" HIGH. GOOSENECK

Particulars of Air Pipes in exposed positions on freeboard, raised quarter, or superstructure decks :-

F'CLE DECK.

1 - 150" DIA. x 760" HIGH.
 3 - 125" DIA. x 760" HIGH.
 1 - 80" DIA. x 760" HIGH.

FREEBOARD DECK.

4 - 150" DIA. x 915" HIGH.
 7 - 125" DIA. x 915" HIGH.
 2 - 50" DIA. x 915" HIGH.
 4 - 100" DIA. x 915" HIGH.

ALL AIR PIPES FITTED WITH BALL TYPE RING.
 O.F. AIR PIPES PROVIDED WITH WIRE GAUZE.

Particulars of Gangway Cargo and Coaling Ports :-

NONE.

Particulars of Scuppers and Sanitary Discharge Pipes :-

SHELTER DK.:-

2 - 80" DIA. SCUPPERS (1 P&S) LED OVERBOARD BELOW FREEBOARD DECK THRO' BRONZE N.R.V. ON SHELL.
 6 - 150" DIA. SCUPPERS (3 P&S) LED OVERBOARD BELOW FREEBOARD DECK THRO' BRONZE N.R.V. ON SHELL.

F'CLE. SPACE FORD DRAINED TO DECK SCUPPERS AT AFT END. AND LED OVERBOARD THROUGH N.R. VALVES P&S.

SANITARY DISCHARGES AND SCUPPERS FROM MIDSHIP ACCOMMODATION & AFT DECKHOUSE

LED OVERBOARD THRO' BRONZE N.R.V. ON SHELL.

SCUPPERS FROM LAUNDRY & DRYING ROOMS IN SHELTER TWEEN DECKS LED OVERBOARD THROUGH 2 N.R. VALVES EACH DISCHARGE

OTHER SPACES BELOW SHELTER DECK.:-

TWEEN DK. SPACES DRAINED TO BILGES THRO' 10-90" DIA. SCUPPERS (5 P&S)

FITTED WITH SCREW DOWN VALVES PROVIDED WITH OPEN/SHUT INDICATORS AND CONTROLLED FROM ABOVE SHELTER DK.

TONNAGE WELL DRAINED OVERBOARD BY 2 SCREW-DOWN VALVES. EQUIVALENT TO 5" DIA. CONTROLLED FROM ABOVE SHELTER DK. & FITTED WITH OPEN/SHUT INDICATORS. THESE VALVES ARE LOCKED SHUT WHEN SHIP IS IN C.S.D. CONDITION, AND BLANKED OFF ON INSIDE

STEERING GEAR AND CHAIN LOCKER COMPARTMENTS DRAINED BY HANDPUMPS DIRECTLY OVERBOARD

Particulars of Side Scuttles and Deadlights :-

STEERING GEAR SPACE & BOSUN STORE :- 6 - 250" DIA. SIDESCUTTLES.

TWEEN DECKS ABREAST CRUISING :- 2 - 250" DIA. SIDESCUTTLES.

5 - 250" DIA. SIDESCUTTLES (NON-OPENING)

F'CLE. SPACES :- 5 - 250" DIA. SIDESCUTTLES.

MIDSHIP HOUSE - 53 - 350" DIA. SIDESCUTTLES.

ALL SIDESCUTTLES ARE STRONGLY CONSTRUCTED OF BRASS.
 WITH HINGED CAST STEEL DEADLIGHTS.

Vertical distance of Sill of lowest Side Scuttle above top of keel. 10" 000.
 Distance from amidships to centre of lowest Side Scuttle 0" 900.

Particulars of Guard Rails and Bulwarks :- SHELTER DK.:- BULWARK 1,200 HIGH x 6" WITH 180 x 90 x 10" RAIL BAR AND 300 x 16 B.P. STAYS 14" 60 APART.

F'CLE. DK.:- 3 TIER RAILS SPACED 318" APART.
 STANCHIONS SPACED 1" 500 APART MAX.

Particulars of Gangways, Lifelines, etc. :-

LIFELINES PROVIDED
 ON SHELTER DECK

Particulars of Freeing Arrangements.

	Length of Bulwark	Height of Bulwark	Size of Freeing Ports	Number each side	Area each side	Rule area each side
AFT END TO BRIDGE AFT BHD	44,500	1,200	1,300 x 230	2	2.78	2.60
BRIDGE AFT BHD TO BRIDGE FORE BHD	26,300	1,200	1,300 x 230	2	2.39	2.19
BRIDGE FORE BHD TO F'CLE	27,000	1,200	1,300 x 230	2	2.39	2.19

State position of each freeing port ... FROM AFT PEAK
 DIMENSIONS TO AFT END OF OPENING (F. and A. position and height above deck edge)
 HEIGHT ABOVE DECK EDGE 275" M. FROM FR. 61 :- 23,000 FT, 1,200 FT, 4,860; 8,880; 13,260; 17,640; 22,020; 26,400.
 FROM FR. 61 :- 30,780; 35,160; 39,540.
 FROM FR. 97 :- 1,540; 5,920; 10,300; 14,680; 19,060; 23,440; 27,820 & 32,200.
 State whether the freeing ports are fitted with shutters, bars, or rails, and give particulars of such :-
 No FITTINGS.

Additional area where sheer is less than standard.

PARTICULARS OF PROTECTION TO OPENINGS, ETC.

HATCHWAYS ON FREEBOARD AND SUPERSTRUCTURE DECKS.																								
			F'CLE DK.					SHELTER DECK.						SECOND DECK.										
Description of Hatchway			No 1		No 1		No 2.		No 3.		No 4		No 5		No 1		No 2		No 3		No 4		No 5.	
Dimensions of Hatchway (To Coamings)			8,220		8,220.		14,510		8,030.		10,950		10,220		6,165		14,510		8,030		10,950		10,220	
COAMINGS	Height above Deck	Thickness	6,500		6,500.		6,500		6,500		6,500		6,500		6,400		6,400		6,400		6,400		6,400	
			1,050		230.		1,200		1,050		1,050		1,050				230				230		10,950	
			1,200		230x10F		1,200		1,050		1,050		1,050				10				10		6,400	
			1,200		10		1,200		1,050		1,050		1,050				10				10		6,400	
COAMINGS	Stiffeners	Brackets, Stays	300x12		300x12		300x12		300x12		300x12		300x12											
			230x12		230x12		230x12		230x12		230x12		230x12											
			230x12		230x12		230x12		230x12		230x12		230x12											
			230x12		230x12		230x12		230x12		230x12		230x12											
HATCH BEAMS	Number	Spacing	35.3E		35.3E		35.3E		35.3E		35.3E		35.3E											
			35.3E		35.3E		35.3E		35.3E		35.3E		35.3E											
			35.3E		35.3E		35.3E		35.3E		35.3E		35.3E											
			35.3E		35.3E		35.3E		35.3E		35.3E		35.3E											
HATCH BEAMS	Scantling and Sketch	Bearing Surface	4		4		4		4		4		4		3		9		4		6		6	
			1678max.		1678max.		1678max.		1678max.		1678max.		1678max.		1583max		1468max		1640max		1580		1484max	
			220x21		220x21		220x21		220x21		220x21		220x21		260x23		245x23		245x23		260x23		245x23	
			40x11.5		40x11.5		40x11.5		40x11.5		40x11.5		40x11.5		505x12.5		455x12.5		455x12.5		465x12.5		455x12.5	
FORE AND AFTERS	Number	Spacing	220x21		220x21		220x21		220x21		220x21		220x21		260x23		245x23		245x23		260x23		245x23	
			150		150		150		150		150		260x23		245x23		245x23		260x23		245x23			
			150		150		150		150		150		260x23		245x23		245x23		260x23		245x23			
			150		150		150		150		150		260x23		245x23		245x23		260x23		245x23			
HATCH COVERS	Material	Thickness	WOOD		WOOD		WOOD		WOOD		WOOD		WOOD		WOOD		WOOD		WOOD		WOOD		WOOD	
			70		70		70		70		70		70		70		70		70		70			
			F&A		F&A		F&A		F&A		F&A		F&A		F&A		F&A		F&A		F&A			
			100		100		100		100		100		100		100		100		100		100		100	
HATCH COVERS	How fitted	Bearing Surface	M'GREGOR STEEL WATERTIGHT HATCH.		M'GREGOR STEEL WATERTIGHT HATCH.		M'GREGOR STEEL WATERTIGHT HATCH.		M'GREGOR STEEL WATERTIGHT HATCH.		M'GREGOR STEEL WATERTIGHT HATCH.		M'GREGOR STEEL WATERTIGHT HATCH.		M'GREGOR STEEL WATERTIGHT HATCH.		M'GREGOR STEEL WATERTIGHT HATCH.		M'GREGOR STEEL WATERTIGHT HATCH.		M'GREGOR STEEL WATERTIGHT HATCH.		M'GREGOR STEEL WATERTIGHT HATCH.	
			COVERS IN 4 SECTIONS 7m THICK EXCEPT FOR'D COVER 7.5m THICK. WITH 2 WEBS 280mm x 7.5m WITH FACE BARS 180 x 13 TO 14.		COVERS IN 4 SECTIONS 7m THICK. WITH 2 WEBS 280mm x 7.5m WITH FACE BARS 180 x 13 TO 14.		COVERS IN 4 SECTIONS 7m THICK. WITH 2 WEBS 280mm x 7.5m WITH FACE BARS 180 x 13 TO 14.		COVERS IN 4 SECTIONS 7m THICK. WITH 2 WEBS 280mm x 7.5m WITH FACE BARS 180 x 13 TO 14.		COVERS IN 4 SECTIONS 7m THICK. WITH 2 WEBS 280mm x 7.5m WITH FACE BARS 180 x 13 TO 14.		COVERS IN 4 SECTIONS 7m THICK. WITH 2 WEBS 280mm x 7.5m WITH FACE BARS 180 x 13 TO 14.		COVERS IN 4 SECTIONS 7m THICK. WITH 2 WEBS 280mm x 7.5m WITH FACE BARS 180 x 13 TO 14.		COVERS IN 4 SECTIONS 7m THICK. WITH 2 WEBS 280mm x 7.5m WITH FACE BARS 180 x 13 TO 14.		COVERS IN 4 SECTIONS 7m THICK. WITH 2 WEBS 280mm x 7.5m WITH FACE BARS 180 x 13 TO 14.		COVERS IN 4 SECTIONS 7m THICK. WITH 2 WEBS 280mm x 7.5m WITH FACE BARS 180 x 13 TO 14.		COVERS IN 4 SECTIONS 7m THICK. WITH 2 WEBS 280mm x 7.5m WITH FACE BARS 180 x 13 TO 14.	
			ENDS 280mm x 7.5m WITH FACE BARS 180 x 13 TO 14.		ENDS 280mm x 7.5m WITH FACE BARS 180 x 13 TO 14.		ENDS 280mm x 7.5m WITH FACE BARS 180 x 13 TO 14.		ENDS 280mm x 7.5m WITH FACE BARS 180 x 13 TO 14.		ENDS 280mm x 7.5m WITH FACE BARS 180 x 13 TO 14.		ENDS 280mm x 7.5m WITH FACE BARS 180 x 13 TO 14.		ENDS 280mm x 7.5m WITH FACE BARS 180 x 13 TO 14.		ENDS 280mm x 7.5m WITH FACE BARS 180 x 13 TO 14.		ENDS 280mm x 7.5m WITH FACE BARS 180 x 13 TO 14.		ENDS 280mm x 7.5m WITH FACE BARS 180 x 13 TO 14.		ENDS 280mm x 7.5m WITH FACE BARS 180 x 13 TO 14.	
			ENDS 280mm x 7.5m WITH FACE BARS 180 x 13 TO 14.		ENDS 280mm x 7.5m WITH FACE BARS 180 x 13 TO 14.		ENDS 280mm x 7.5m WITH FACE BARS 180 x 13 TO 14.		ENDS 280mm x 7.5m WITH FACE BARS 180 x 13 TO 14.		ENDS 280mm x 7.5m WITH FACE BARS 180 x 13 TO 14.		ENDS 280mm x 7.5m WITH FACE BARS 180 x 13 TO 14.		ENDS 280mm x 7.5m WITH FACE BARS 180 x 13 TO 14.		ENDS 280mm x 7.5m WITH FACE BARS 180 x 13 TO 14.		ENDS 280mm x 7.5m WITH FACE BARS 180 x 13 TO 14.		ENDS 280mm x 7.5m WITH FACE BARS 180 x 13 TO 14.		ENDS 280mm x 7.5m WITH FACE BARS 180 x 13 TO 14.	
HATCH COVERS	Spacing of Cleats	Number of Tarpaulins	AS FOR HATCHES		AS FOR HATCHES		AS FOR HATCHES		AS FOR HATCHES		AS FOR HATCHES		AS FOR HATCHES		AS FOR HATCHES		AS FOR HATCHES		AS FOR HATCHES		AS FOR HATCHES		AS FOR HATCHES	
			2, 3, 4 & 5		2, 3, 4 & 5		2, 3, 4 & 5		2, 3, 4 & 5		2, 3, 4 & 5		2, 3, 4 & 5		2, 3, 4 & 5		2, 3, 4 & 5		2, 3, 4 & 5		2, 3, 4 & 5			
			2, 3, 4 & 5		2, 3, 4 & 5		2, 3, 4 & 5		2, 3, 4 & 5		2, 3, 4 & 5		2, 3, 4 & 5		2, 3, 4 & 5		2, 3, 4 & 5		2, 3, 4 & 5		2, 3, 4 & 5			
			2, 3, 4 & 5		2, 3, 4 & 5		2, 3, 4 & 5		2, 3, 4 & 5		2, 3, 4 & 5		2, 3, 4 & 5		2, 3, 4 & 5		2, 3, 4 & 5		2, 3, 4 & 5		2, 3, 4 & 5			
*Are wood fore and afters steel shod at all bearing surfaces?			YES.		YES.		YES.		YES.		YES.		YES.		YES.		YES.		YES.		YES.		YES.	
Are battens and wedges efficient and in good condition?			YES.		YES.		YES.		YES.		YES.		YES.		YES.		YES.		YES.		YES.		YES.	
Are tarpaulins in good condition and in accordance with rule requirements?			YES.		YES.		YES.		YES.		YES.		YES.		YES.		YES.		YES.		YES.		YES.	
Are lashings provided in accordance with rule requirements?			YES.		YES.		YES.		YES.		YES.		YES.		YES.		YES.		YES.		YES.		YES.	
Are wood covers fitted with galvanised end bands?			YES.		YES.		YES.		YES.		YES.		YES.		YES.		YES.		YES.		YES.		YES.	

Particulars of any special features:— (Timber Deck-cargo Fittings, Skylights, Sewage Systems, Ash Ejectors, Rubbish Shoots, etc.)

TONNAGE HATCH AFT. :- 6,640 x 1520 (TO COAMINGS) WITH 250 x 10 COAMING FITTED WITH W.T. STEEL COVER 9mm THICK. WITH 100 x 10 FLAT BAR STIFFENERS, SECURED BY 20mm DIA. CLIPS SPACED 421mm APART. OPERABLE ONLY FROM UNDERSIDE OF COVERS.

PROVISIONS MADE FOR WOOD COVERS WHEN SAILING IN "OPEN SHELTER DECK CONDITION" - (WOOD COVERS 70mm THICK, FITTED F & A, BEARING SURFACE 70mm. See C. 11 and 12 of 3/9/63)

SMALL HATCHWAYS. (SEE ALSO BELOW)

TO TONNAGE WELL:- 400 x 500 WITH COAMING. 360 x 10mm HINGED STEEL W.T. COVER 8mm THICK - 4 CLIPS.
 TO BOSUNS STORE (AFT):- 1220 x 760 " " 610 x 11mm " " " " 7mm " - 5 CLIPS.
 TO F'CLE. STORE:- 1020 x 1020 " " 610 x 11mm " " " " 7mm " - 5 CLIPS.
 TO F'CLE SPACE:- 2 @ 560 x 520 " " 610 x 11mm " " " " 7mm " - 4 CLIPS.

THE M'GREGOR HATCH COVERS HAVE BEEN CONSTRUCTED UNDER THE SURVEY OF THE SOCIETY'S SURVEYORS.

TRANSVERSE BHD. IN NO 3 TWEEN DK. HAS FULL HEIGHT SLIDING DOOR (IN HALVES) IN WAY OF HATCHWAY. FOR PASSAGE OF SPECIAL CARGO.

IN "OPEN SHELTER DECK CONDITION" PLATE COVERS ON TONNAGE OPENINGS MAY REST PROVIDED RUBBER JOINTS BE REMOVED.

SMALL HATCHWAYS

TO F.P. STORE 520 x 450mm WITH COAMING 230 x 10mm HINGED STEEL W.T. COVER 7mm THK. 4 CLIPS
 ACCESS HATCHES ON 2ND DK. 22 @ 610 x 610mm " " 230 x 10 " " " " 7 " 4 "
 ACCESS HATCH IN FORECASTLE 550 x 550 " " 230 x 10 " " " " 7 " 4 "



© 2021

Lloyd's Register Foundation