

13 JUL 1938

S.S. 598.

DECKS.

380'-0" L.B.P. x 54'-5" B.DTH. MLD. x 26'-4" D.MLD. U.D.K.

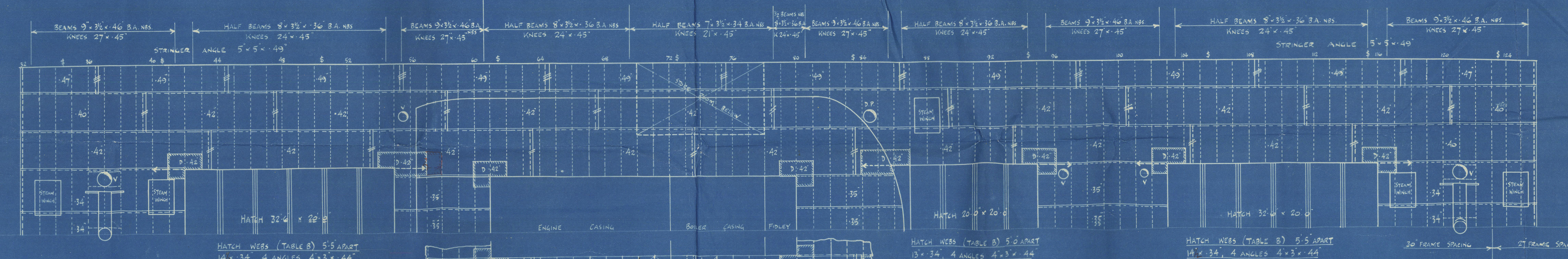
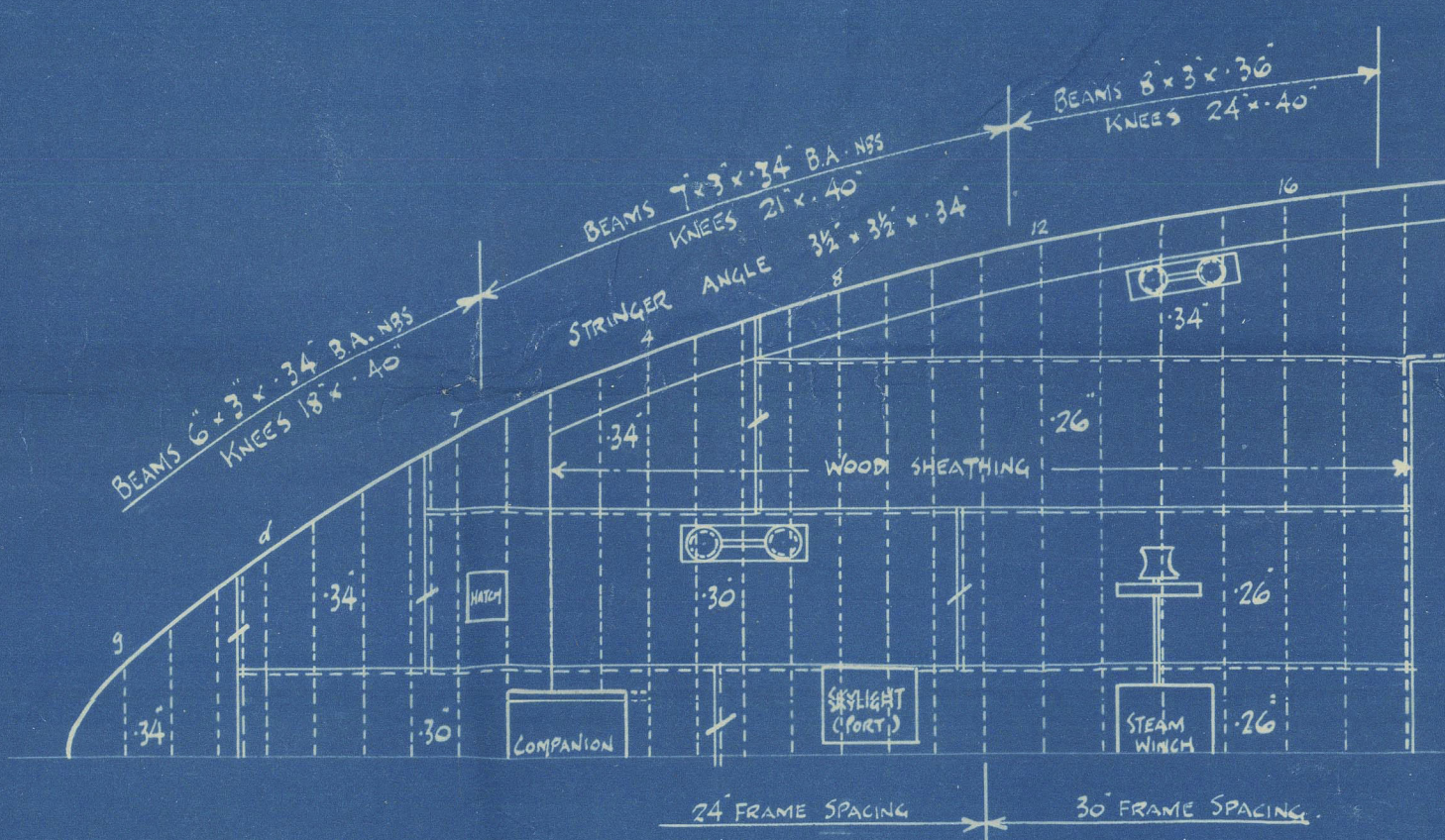
FULL SCANTLING VESSEL TO LLOYD'S 100A1 CLASS.

ERECTOR'S 81-97% OF LENGTH

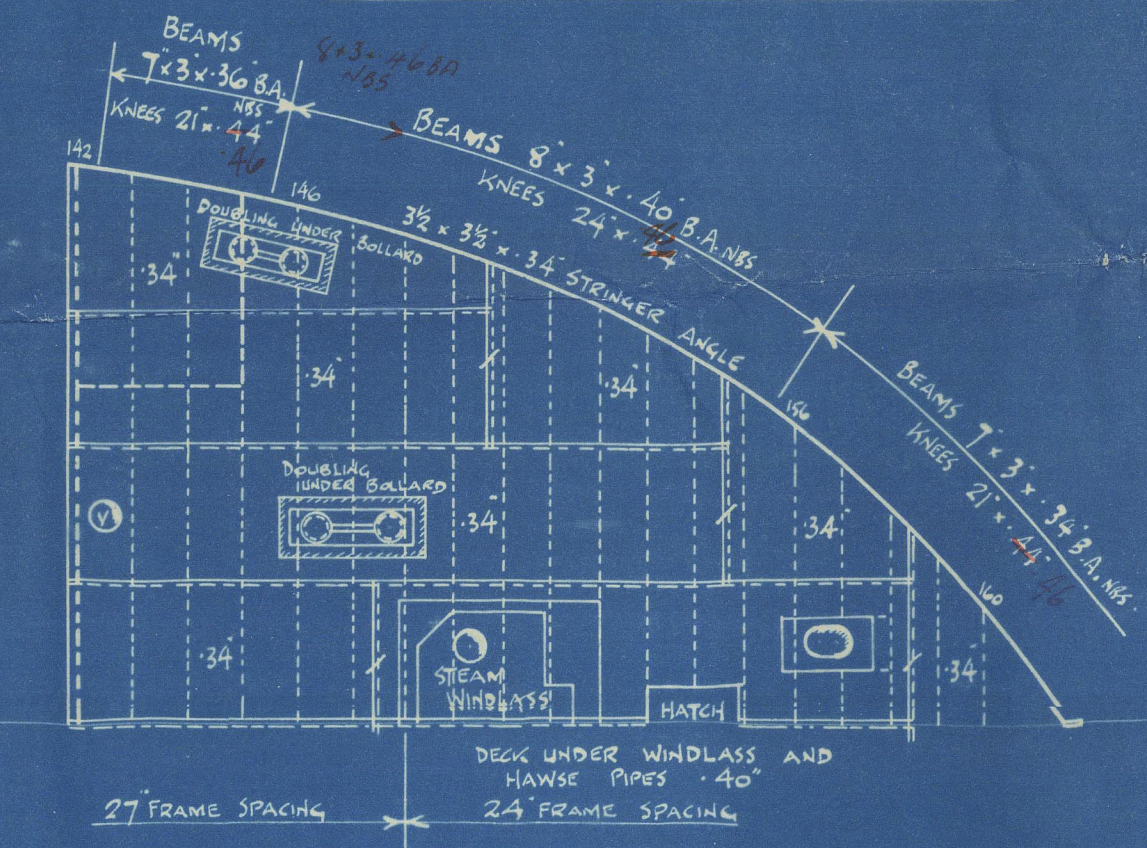
SCALE: 1/8" = 1' 0"

BRIDGE DECK.

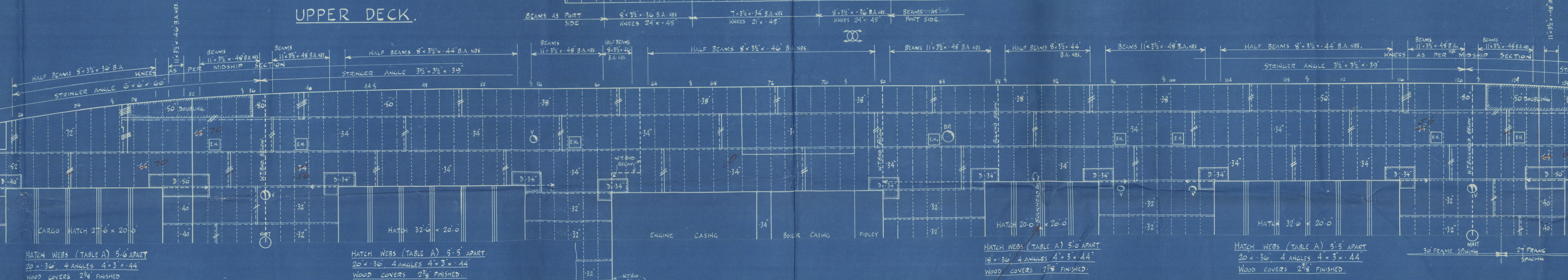
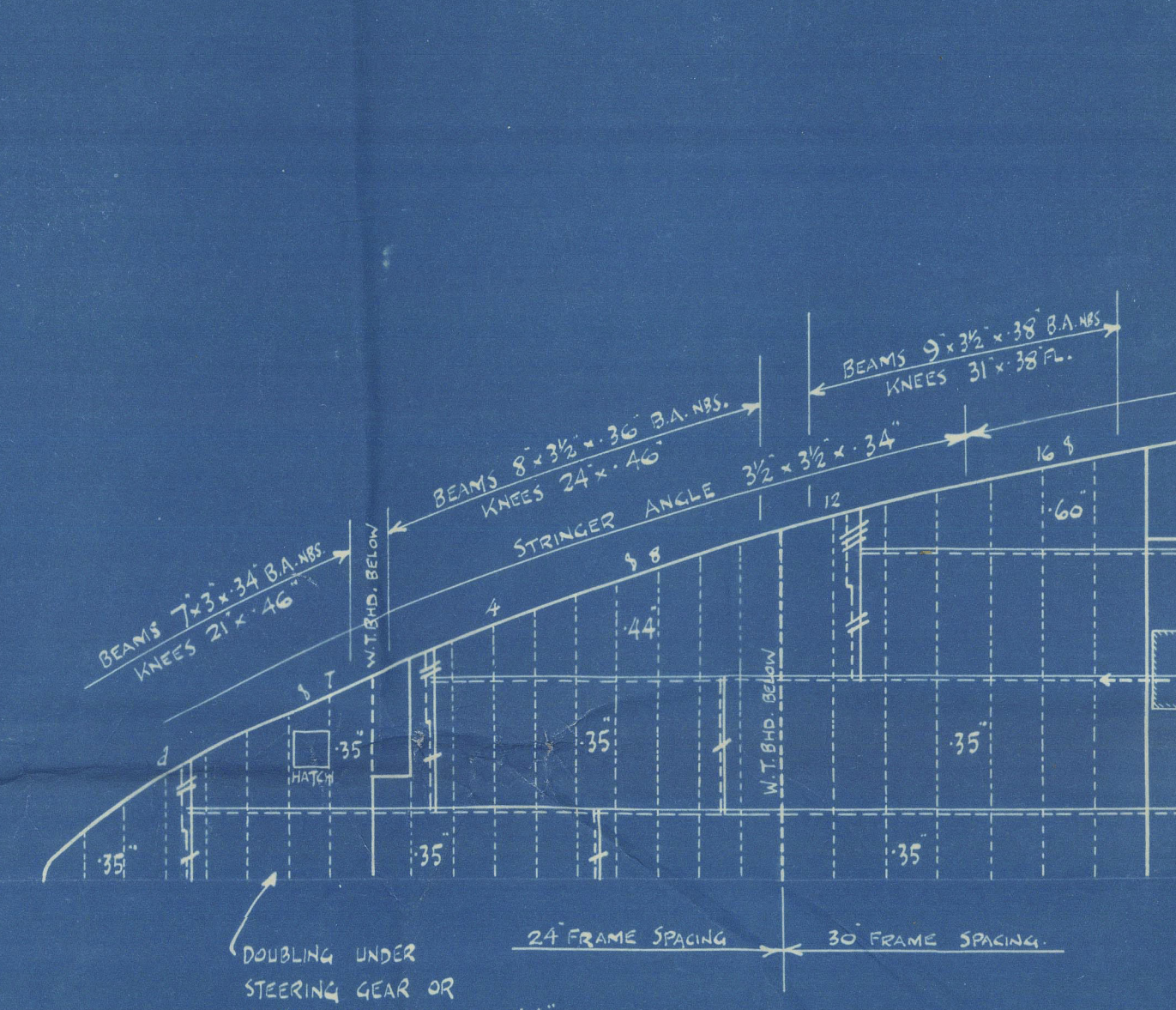
POOP DECK.



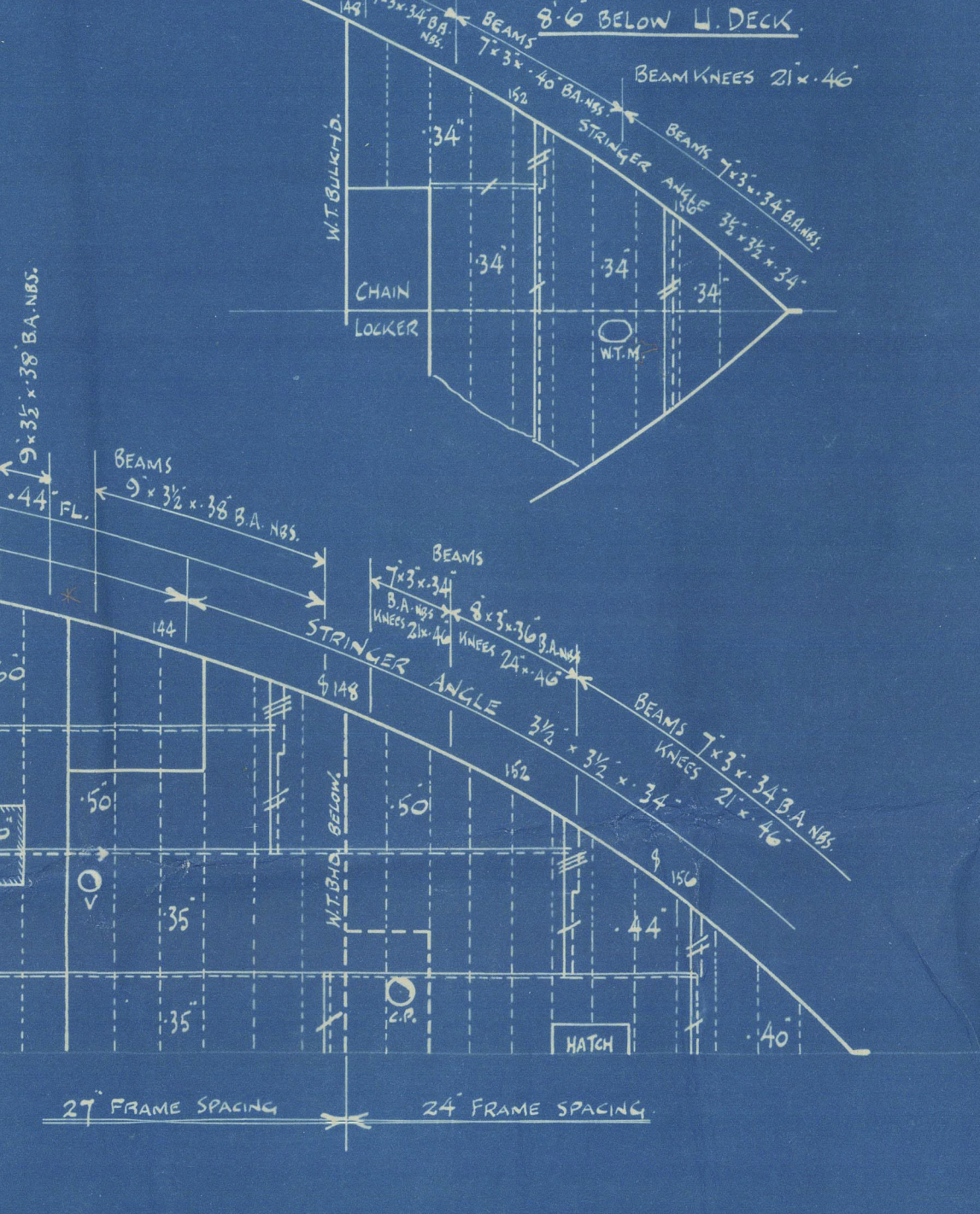
FORECASTLE DECK.



UPPER DECK.



PLAN OF W.T. FLAT



NOTE: THE POSITIONS OF BUTTS SHOWN ON THIS PLAN ARE APPROXIMATE.

Scantlings of deck and upper deck are as shown to be submitted.

JKL 3/1/38

3331 598 20-4-38

J. H. Thompson & Sons
No. 598.
Decks.

Stranglar.
RET. NO. 32864

012711-012715-0003



© 2021
Lloyd's Register
Foundation