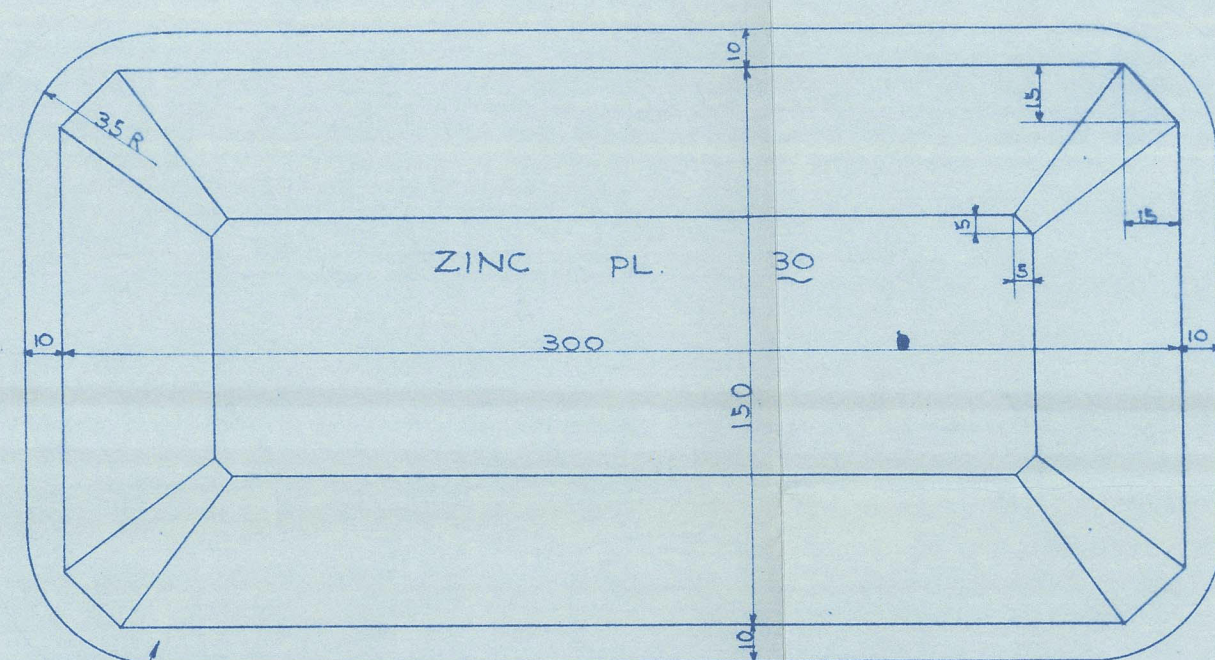
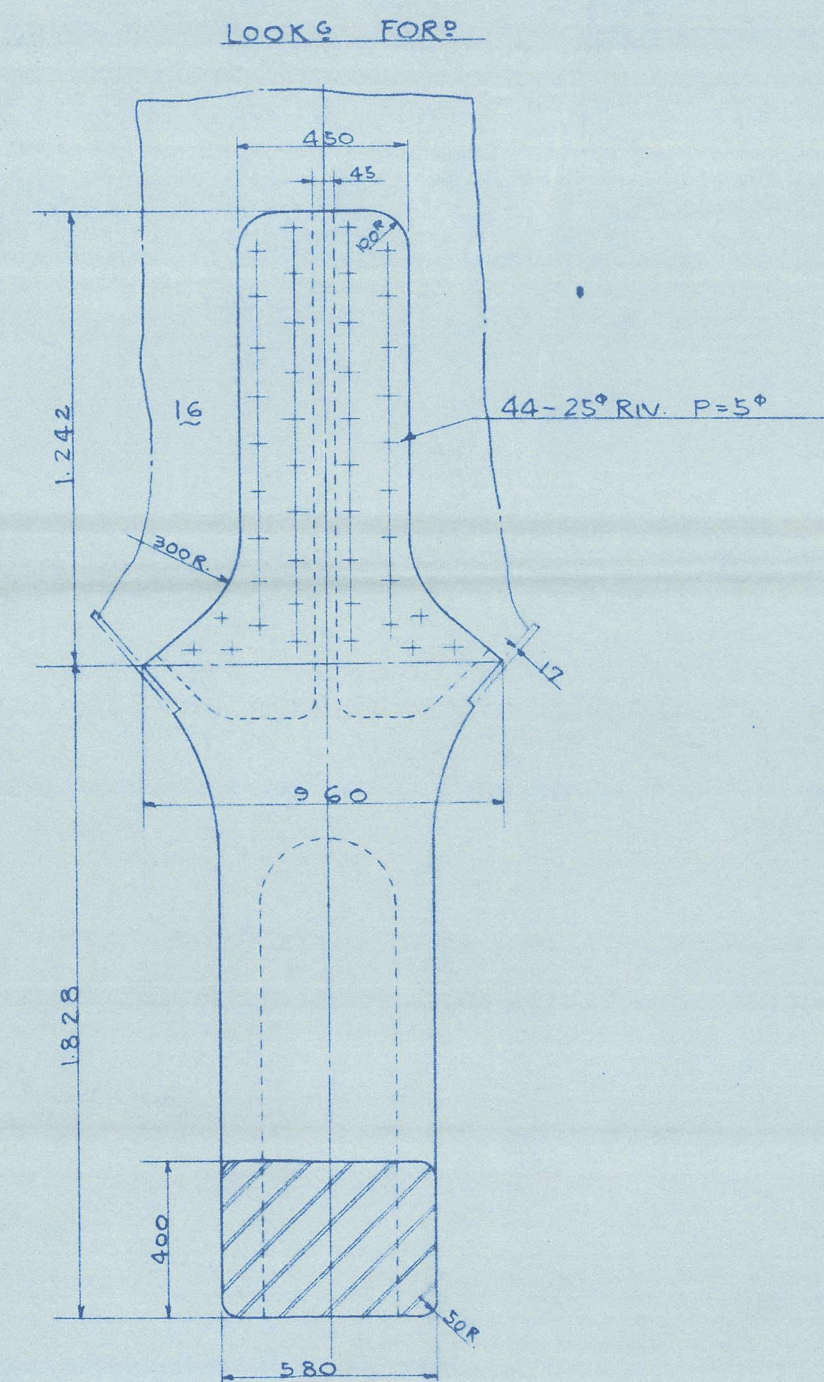


DETAIL OF THE PROTECTIVE ZINC PL. (1/2)

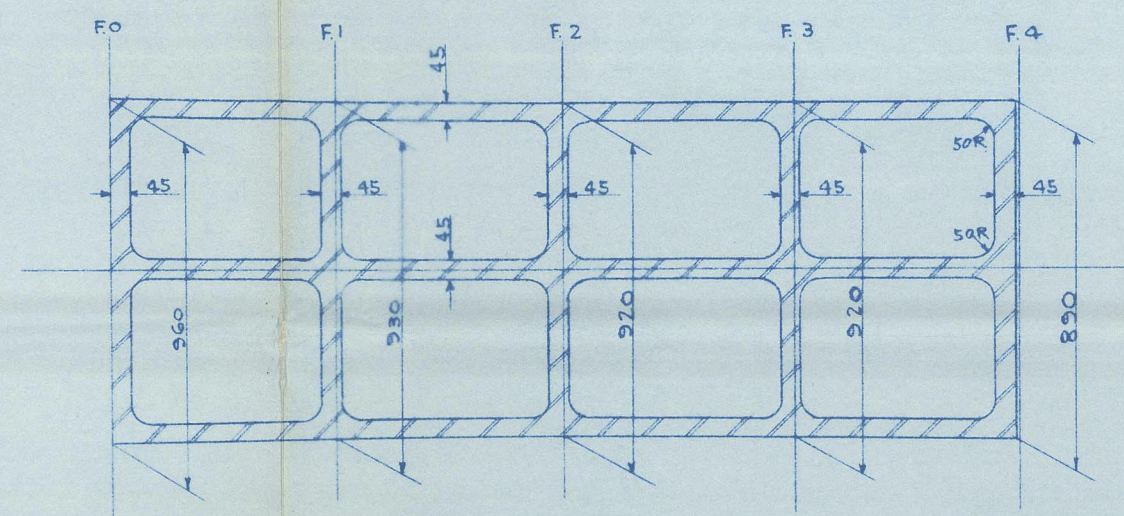


MATERIAL & WEIGHT
MATERIAL CAST STEEL (SC41)
APPROX. WT. 26.5 TONS

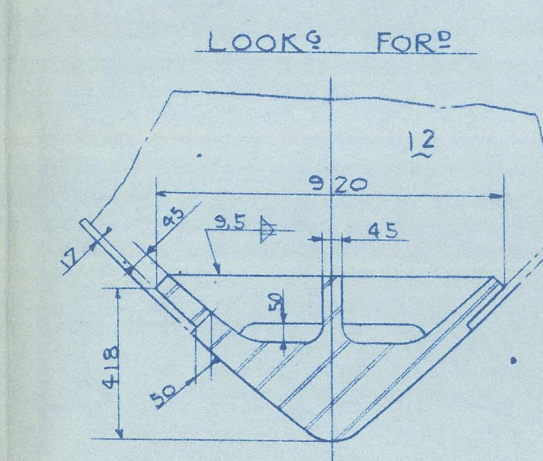
F.O. SECTION



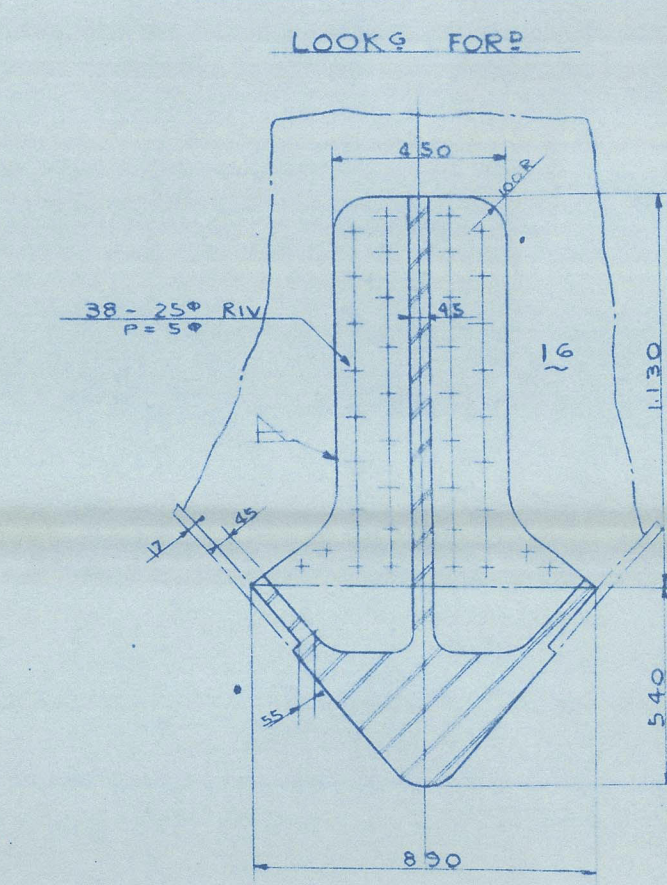
TOP PLAN



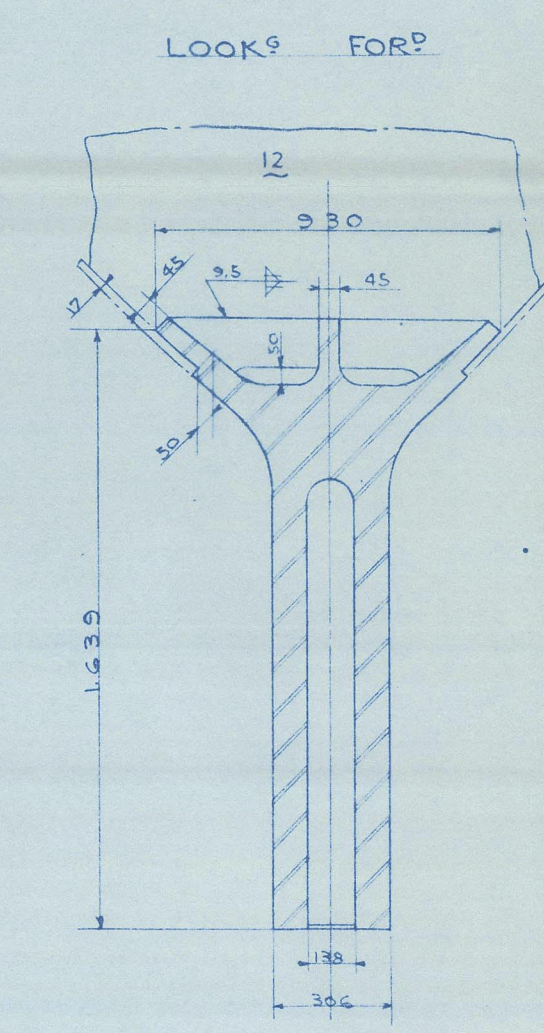
F.2 SECTION



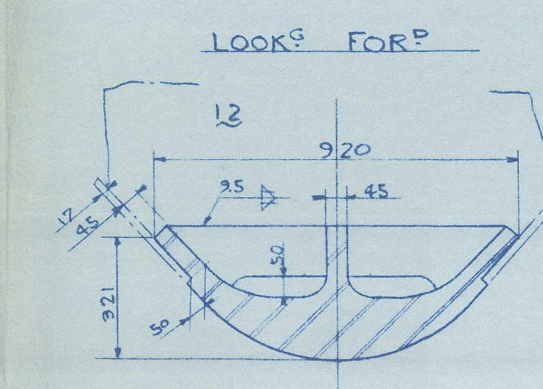
F.4 SECTION



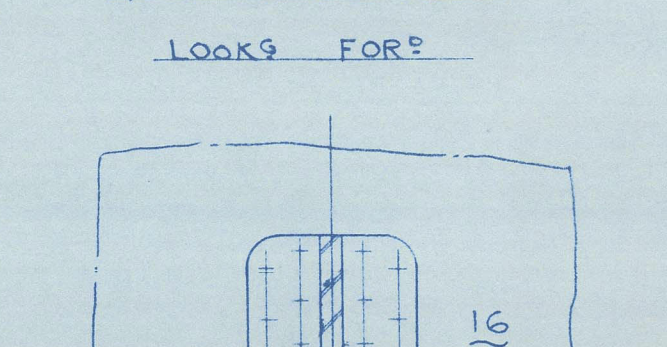
F.1 SECTION



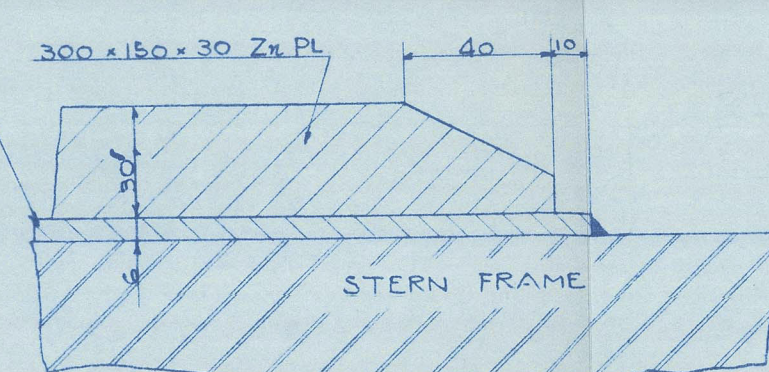
F.3 SECTION



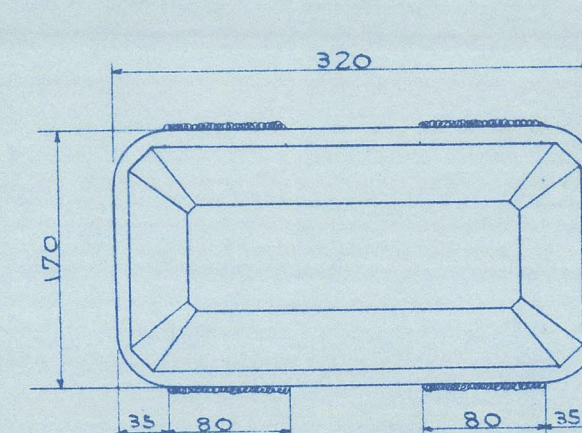
F.4 SECTION



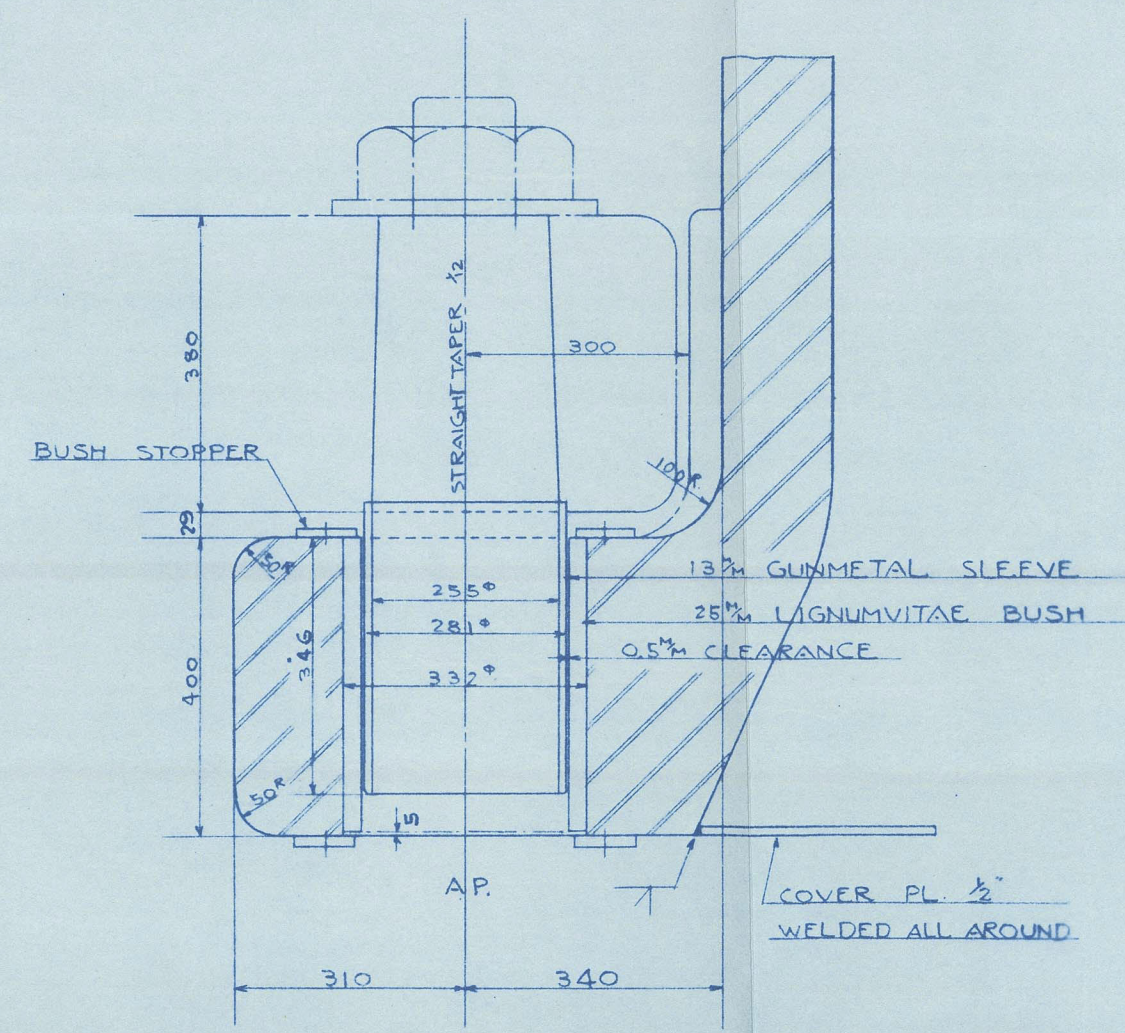
SECTION (1/2)



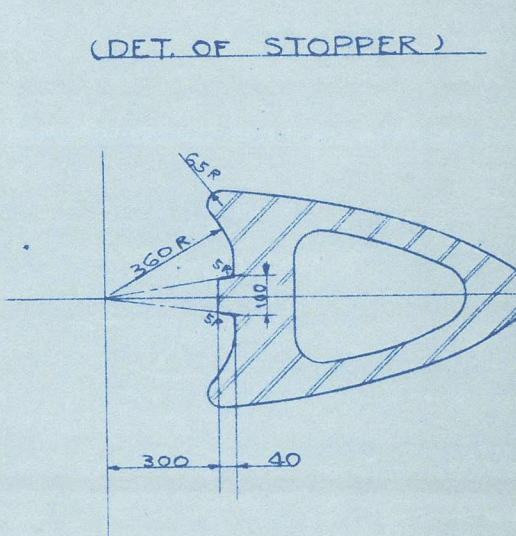
DETAIL OF TACK WELD (1/2)



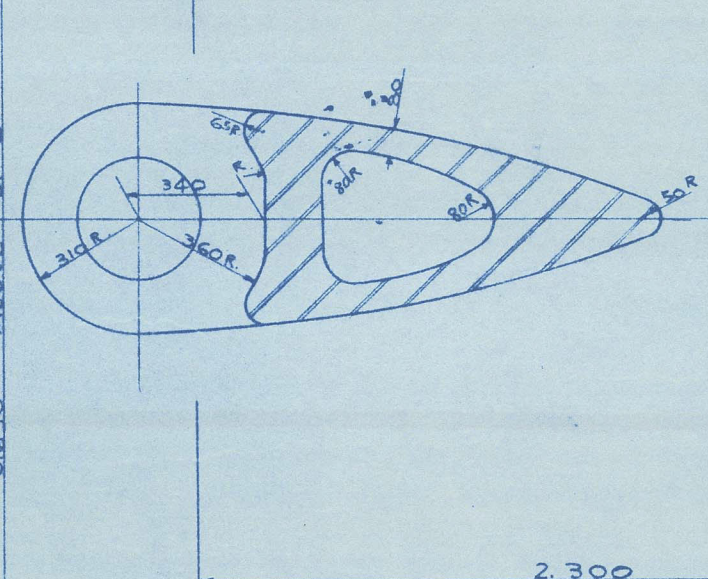
DETAIL OF NECK BEARING (1/4)



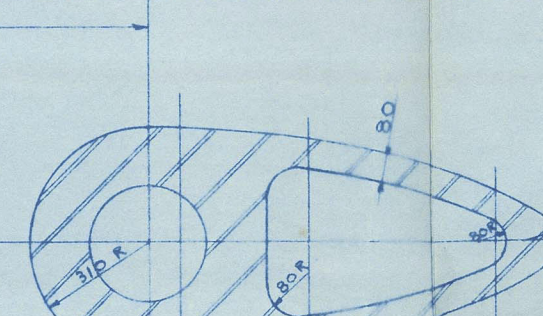
SECTION AT 6" W.L.



SECTION AT 6.400 W.L.



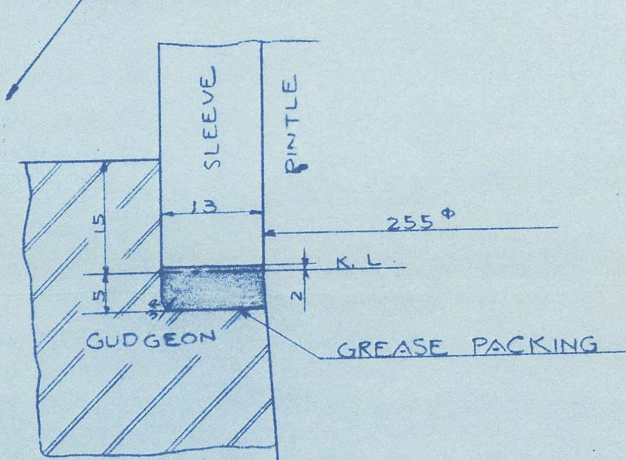
SECTION OF NECK GUDGEON



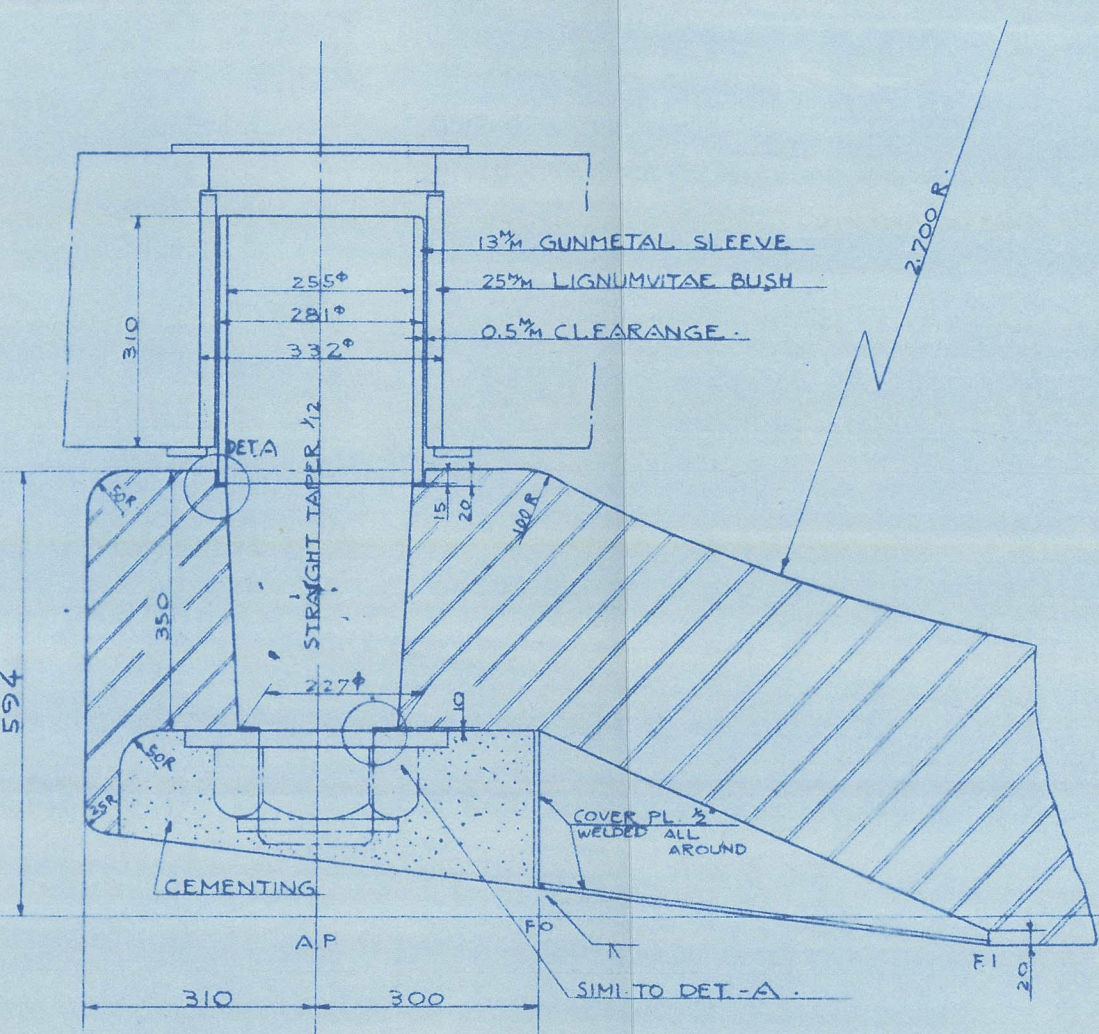
SECTIONS OF SHOE & SOLE PIECE

LOOKING FORWARD

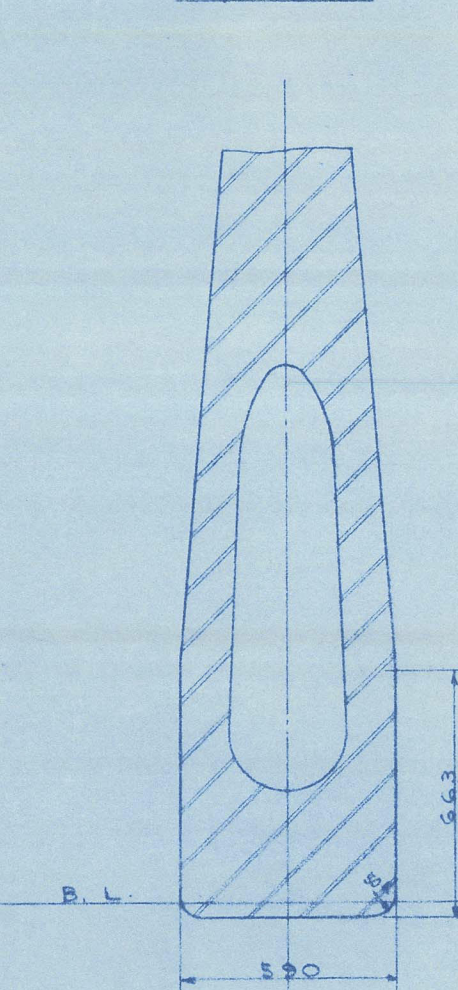
DETAIL A (1/2)



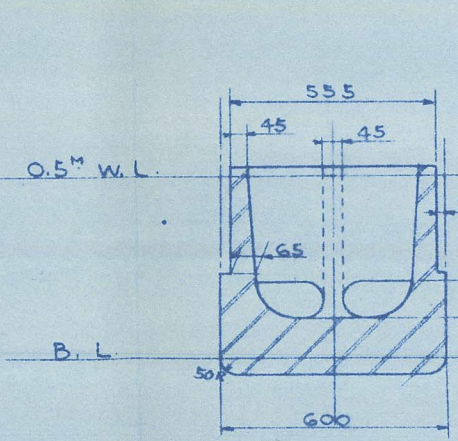
DETAIL OF BOTTOM BEARING (1/4)



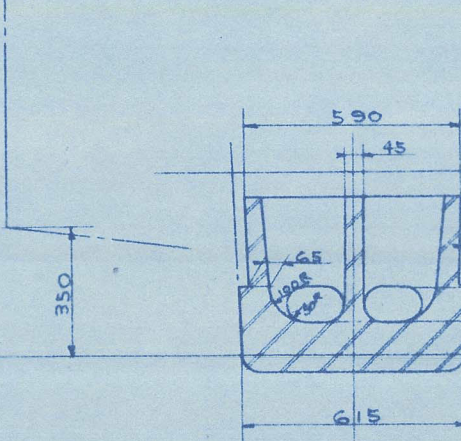
F.5



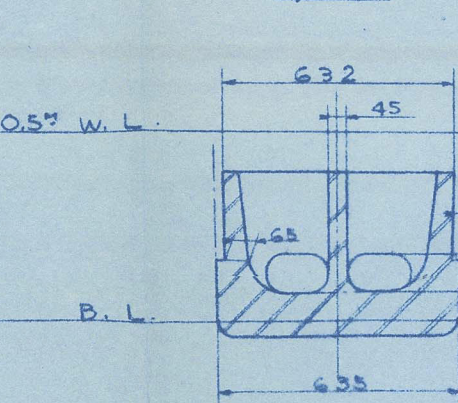
F.6



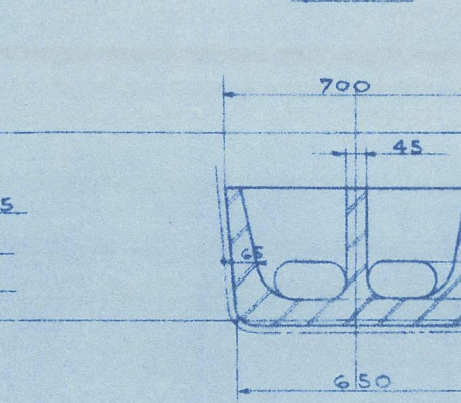
F.7



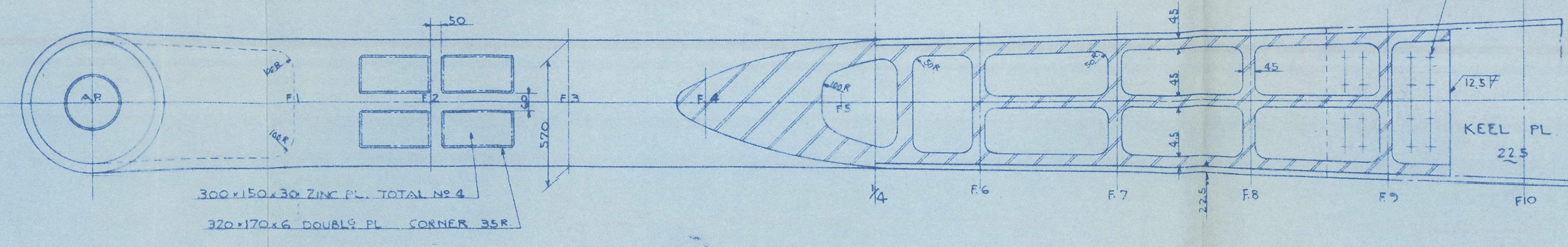
F.8



F.9



TOP PLAN



図面名称	訂正
1. 2. 3. 4. 5. 6. 7. 8. 9. 10. 11. 12. 13. 14. 15. 16. 17. 18. 19. 20. 21. 22. 23. 24. 25. 26. 27. 28. 29. 30. 31. 32. 33. 34. 35. 36. 37. 38. 39. 40. 41. 42. 43. 44. 45. 46. 47. 48. 49. 50. 51. 52. 53. 54. 55. 56. 57. 58. 59. 60. 61. 62. 63. 64. 65. 66. 67. 68. 69. 70. 71. 72. 73. 74. 75. 76. 77. 78. 79. 80. 81. 82. 83. 84. 85. 86. 87. 88. 89. 90. 91. 92. 93. 94. 95. 96. 97. 98. 99. 100.	訂正

DAIDO KAIUN
KOTEI MARU

STERN FRAME

(FINISHED PLAN)

DIMENSION 1400 x 194 x 12.2

SCALE 1/10 CLASS L.R.

HULL DESIGNING SECTION
SHIP DESIGNING DEPARTMENT
NABASAKI WORKS

CHEF OF DEPT. *White*

HEAD *White*

CHECKED *White*

DRAWN *White*

DATE *1499* REG. NO. *1499*

SHIP NO. *1499*

YON NO. *H-202021*

01711-01715 0059

Lloyd's Register
Foundation

KOTEI MARU. ★

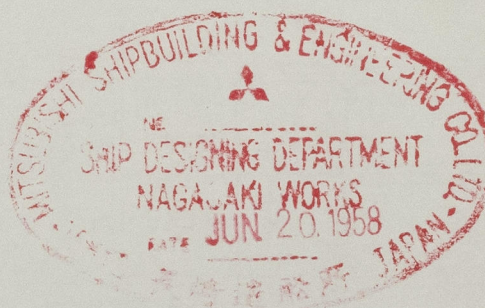
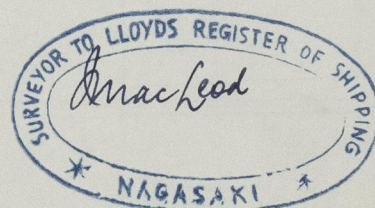
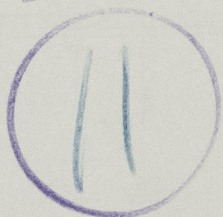
Stemframe

SHIMONOSEKI

RPT. NO. FE1005

DATED. _____

RECORDS DEPT.
LONDON.



© 2021

Lloyd's Register
Foundation

012711-012715-0059