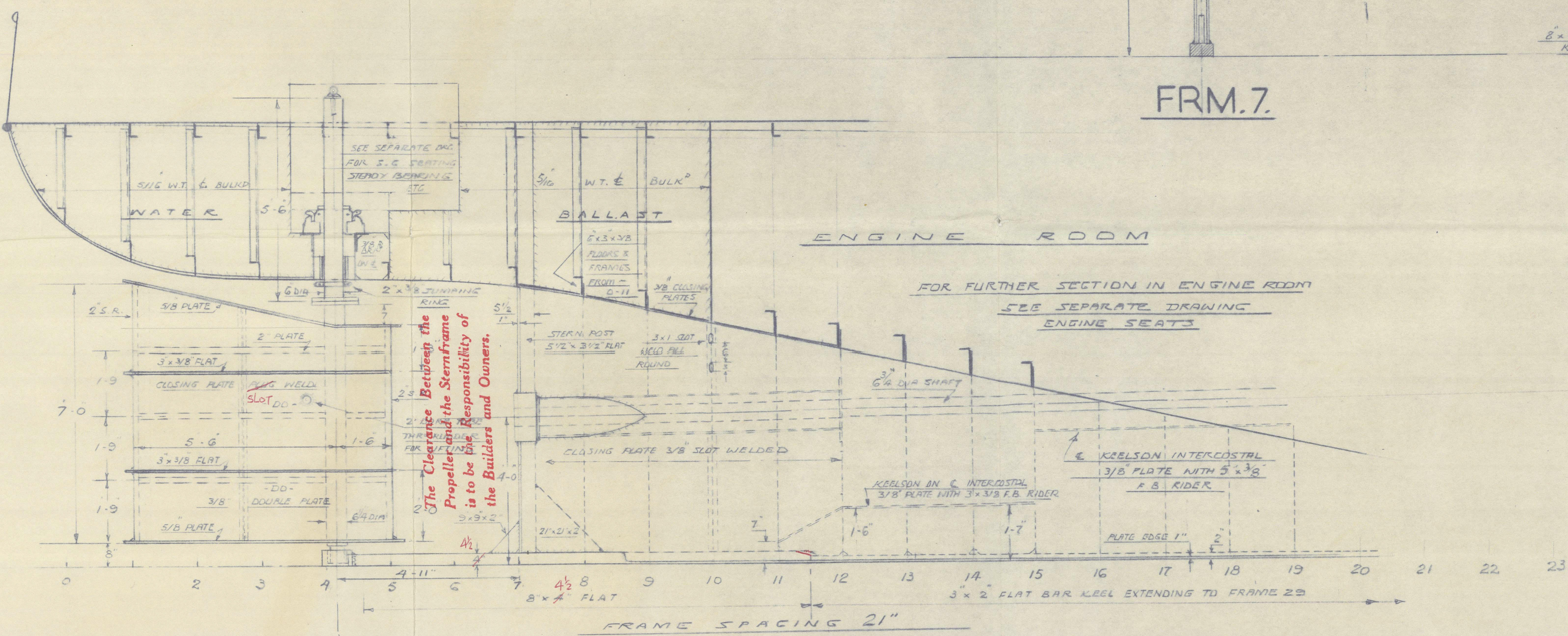
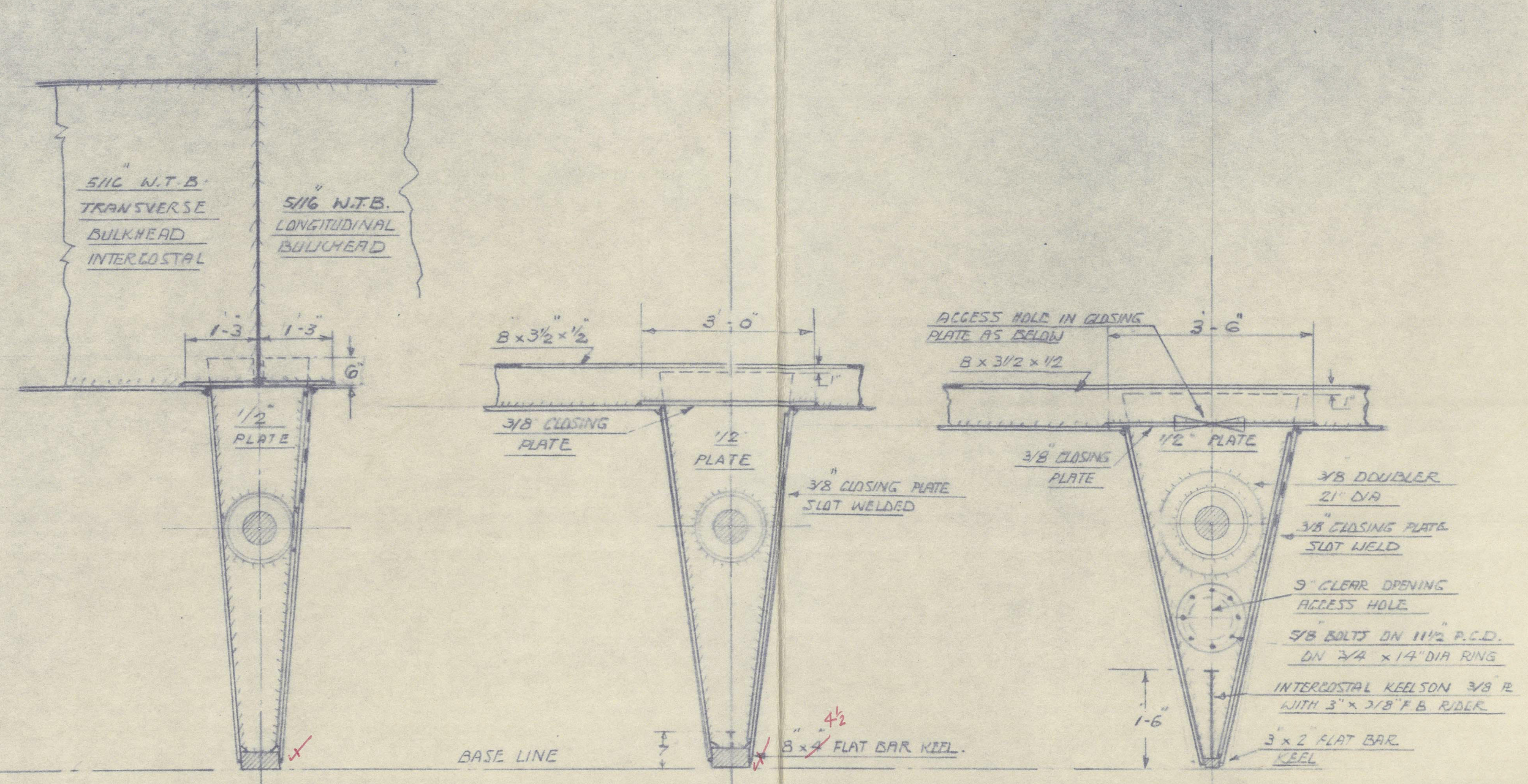
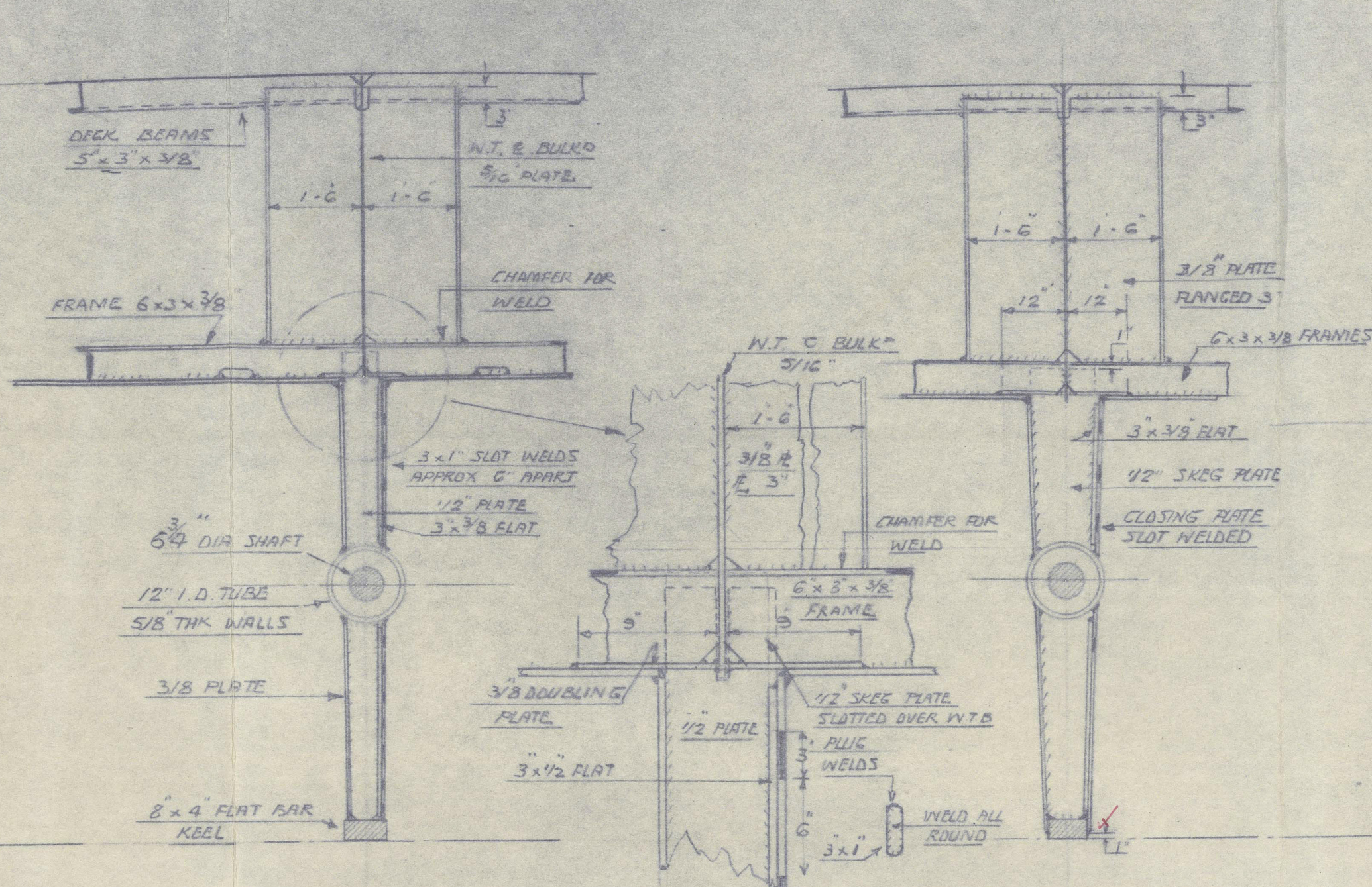
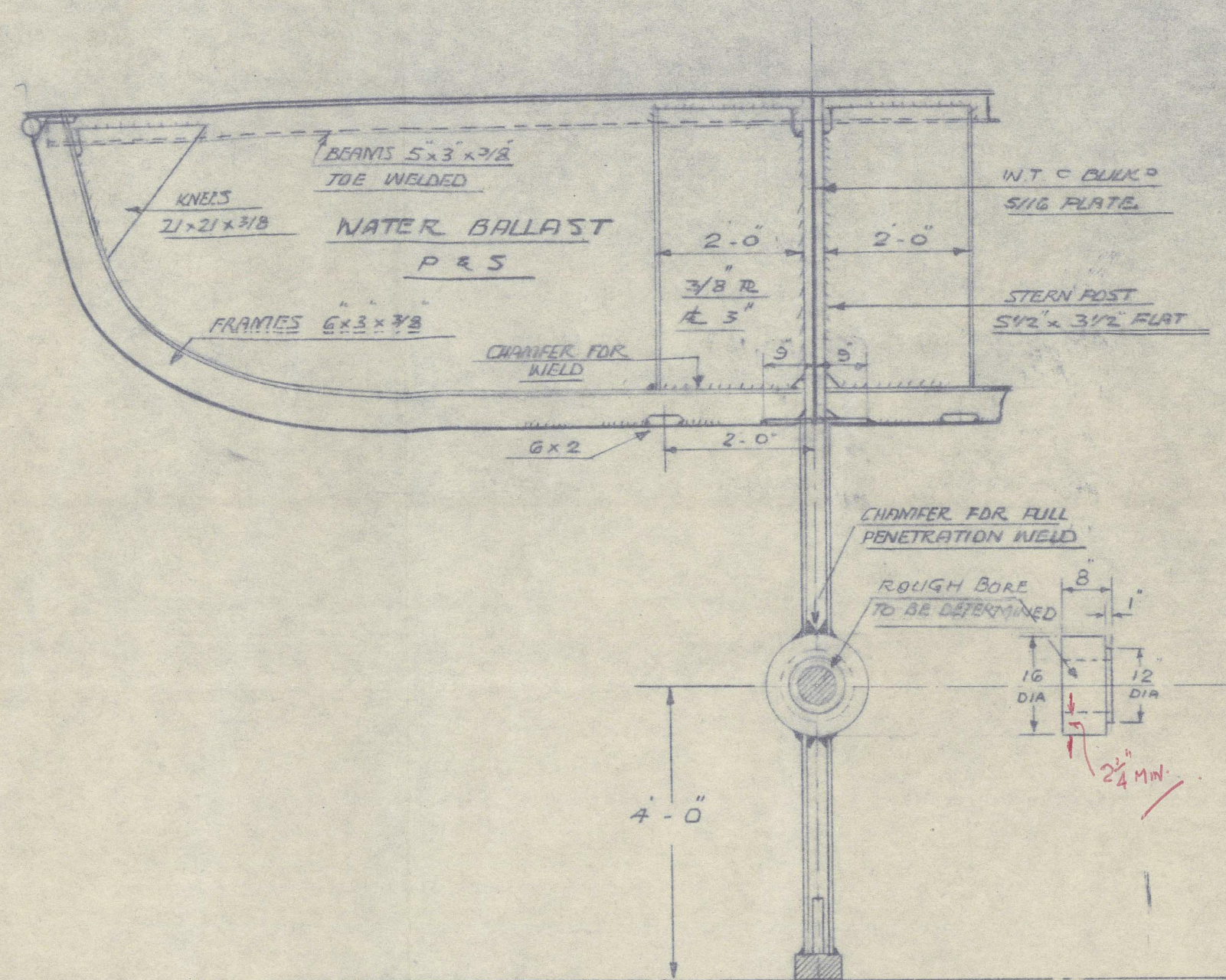
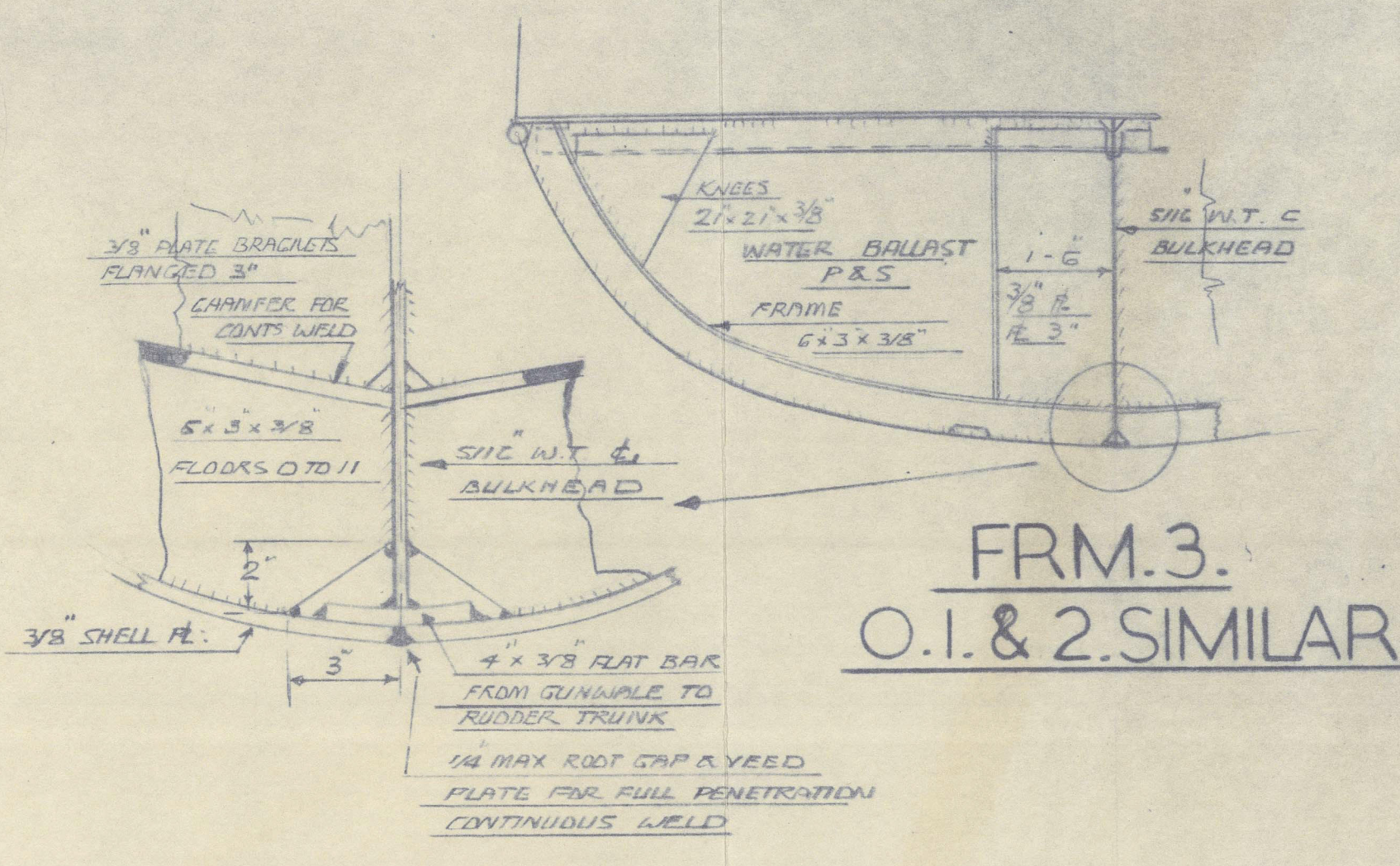


5/7/63

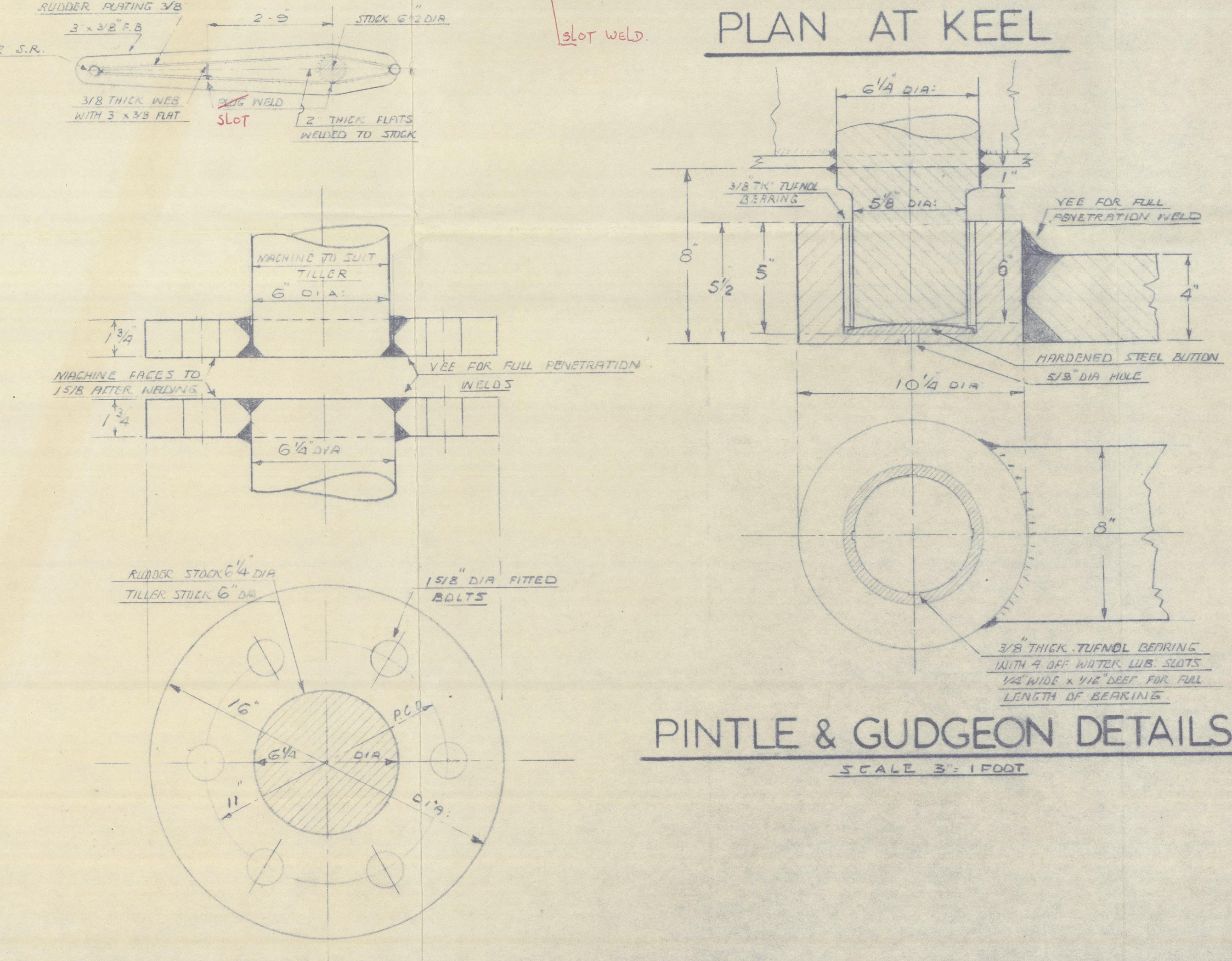
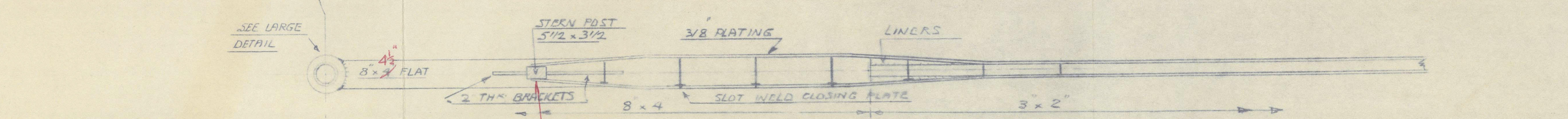


ALL SECTIONS LOOKING FORWARD

SCALE 1/2" = 1 FOOT

KEEL DETAILS

SCALE 3/4" = 1 FOOT

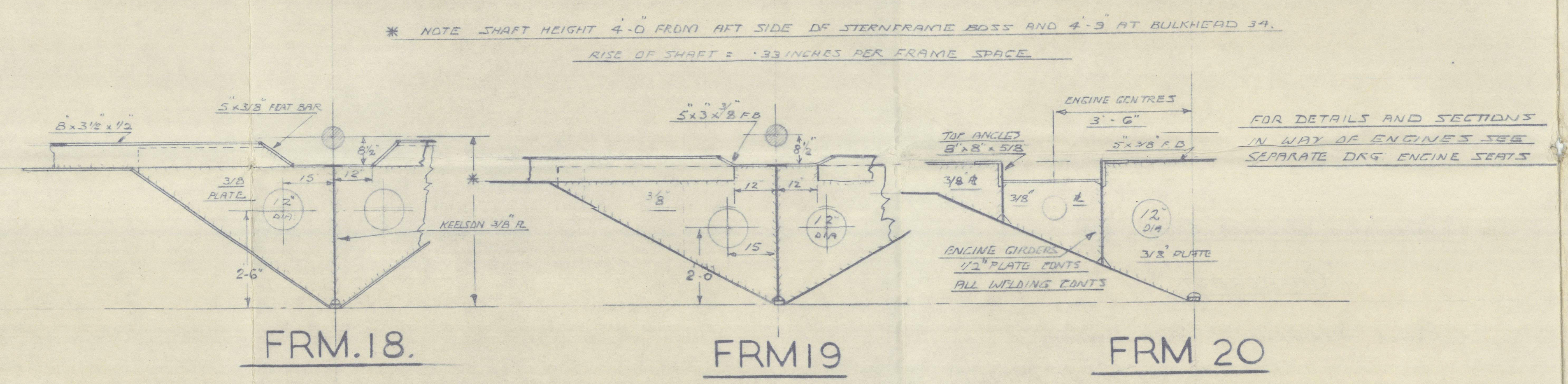


PINTLE & GUDGEON DETAILS

SCALE 3/4" = 1 FOOT

DETAILS OF RUDDER STOCK FLANGES

SCALE 3/4" = 1 FOOT



500.TON.POWERED TANKER.

BUILDERS·CHARRINGTON·GARDNER & LOCKET·LONDON·LTD·PRIORY WORKS·DARTFORD·

Assumed speed not exceeding 10 knots

Castings and/or Forgings to be of Weldable Quality containing not more than 0.2% Carbon.

16/6/63

3 5/16" DIA. BOLT
2 1/4" DIA. BOLT

ISSUE DATE MODIFICATION S

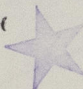
FAIRMILE
MARINE CONSULTANTS LTD
COBHAM SURREY ENGLAND

RUDDER STERNFRAME AND
SKEG SECTIONS

SCALES: 1/2" 1 1/2" 3" = 1 FOOT
DRAWN: J.B.
DATE: 1-5-63

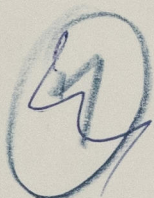
DRGN: FMC/174/8

CHARRINGTON GARDNER LOCKET LTD.

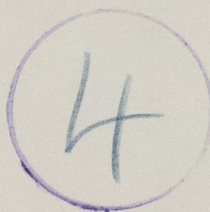
"CHARCREST" 

RUDDER, STERNFRAME & SKES SECTIONS

(DRG N° FM1174/8)



RECORDS DEPT.
LONDON.



This plan has been verified with the approved plans, and includes any modifications and/or additions to the original approved arrangements made during construction which have been approved locally as being in accordance with or equivalent to Rule Requirements.

Signature
Surveyor to Lloyd's
Register

Date



© 2021

Lloyd's Register
Foundation

012786-012791-0128