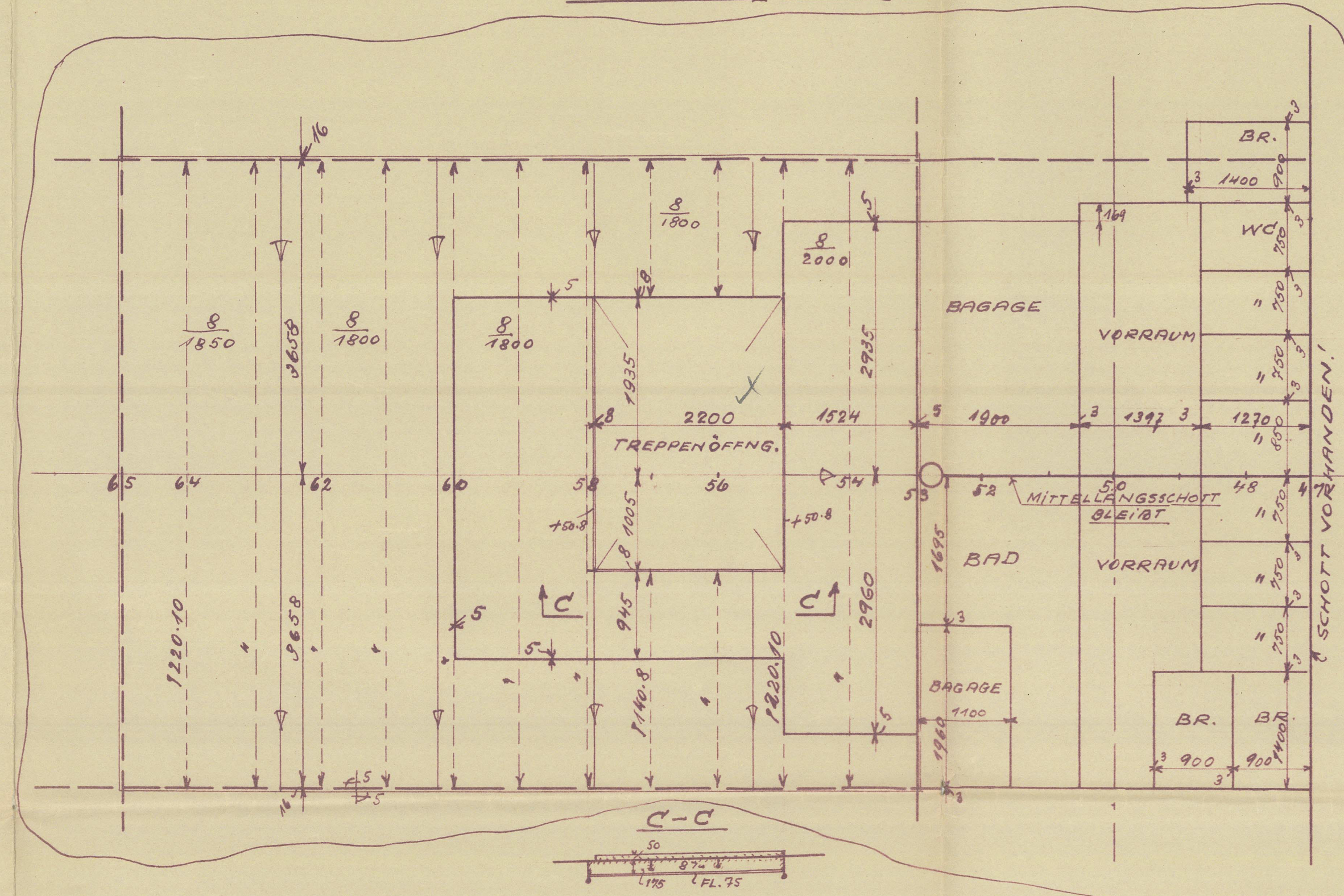
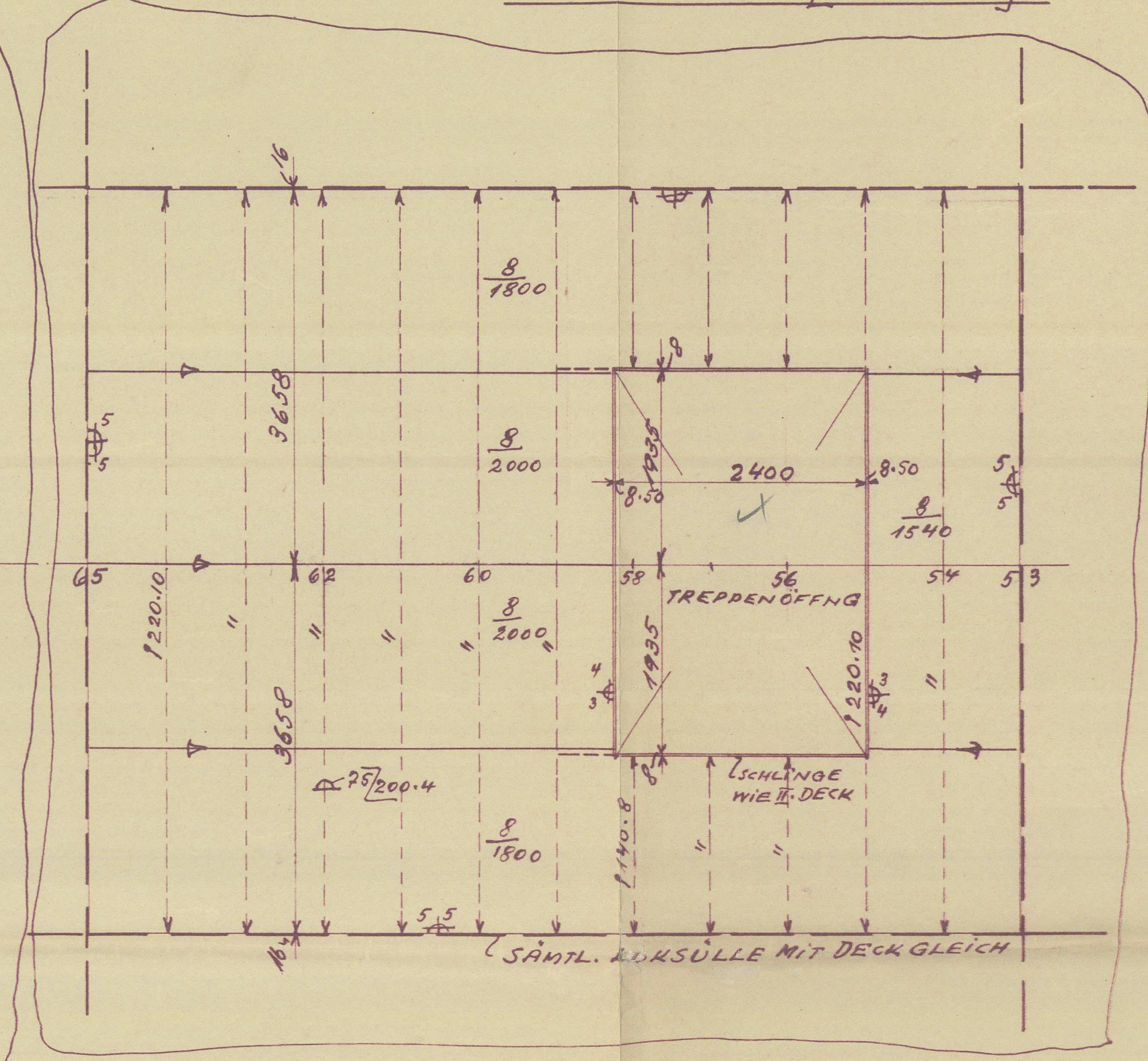


*Opening in bulkhead
rounded corner.*

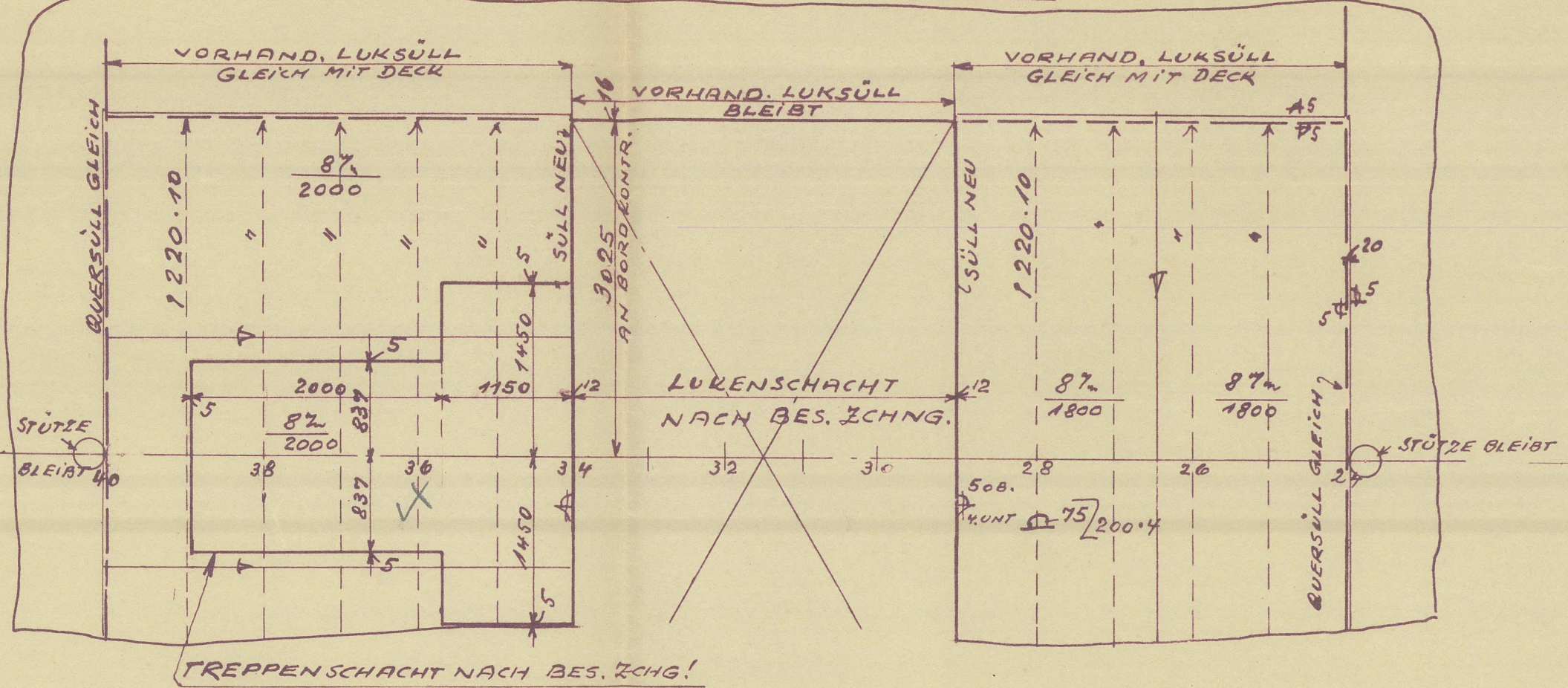
LUKE SPT. 53-65.
C-DECK [II. DECK]



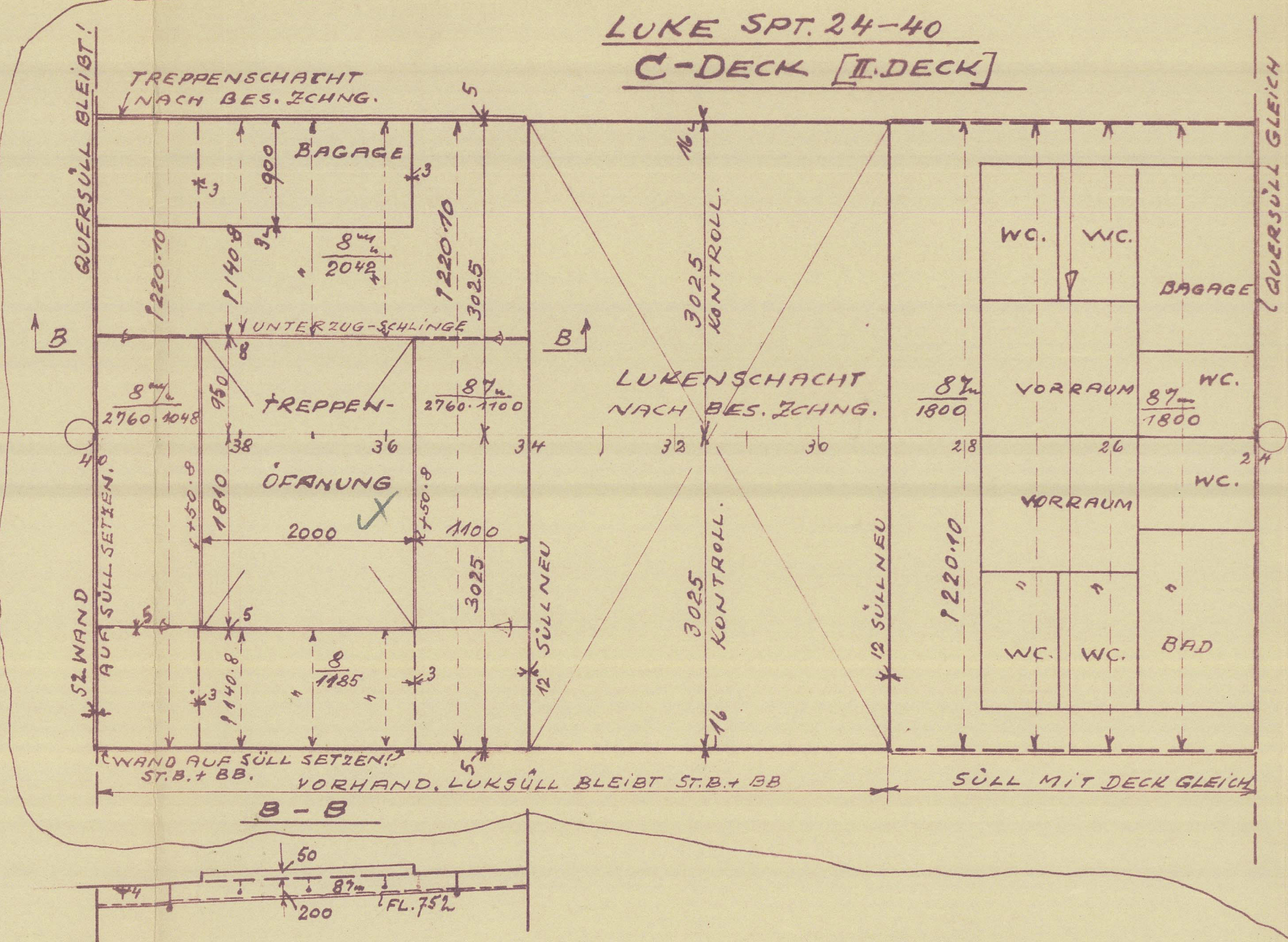
LUKE SPT. 53-65
SHELTERDECK [B-DECK]



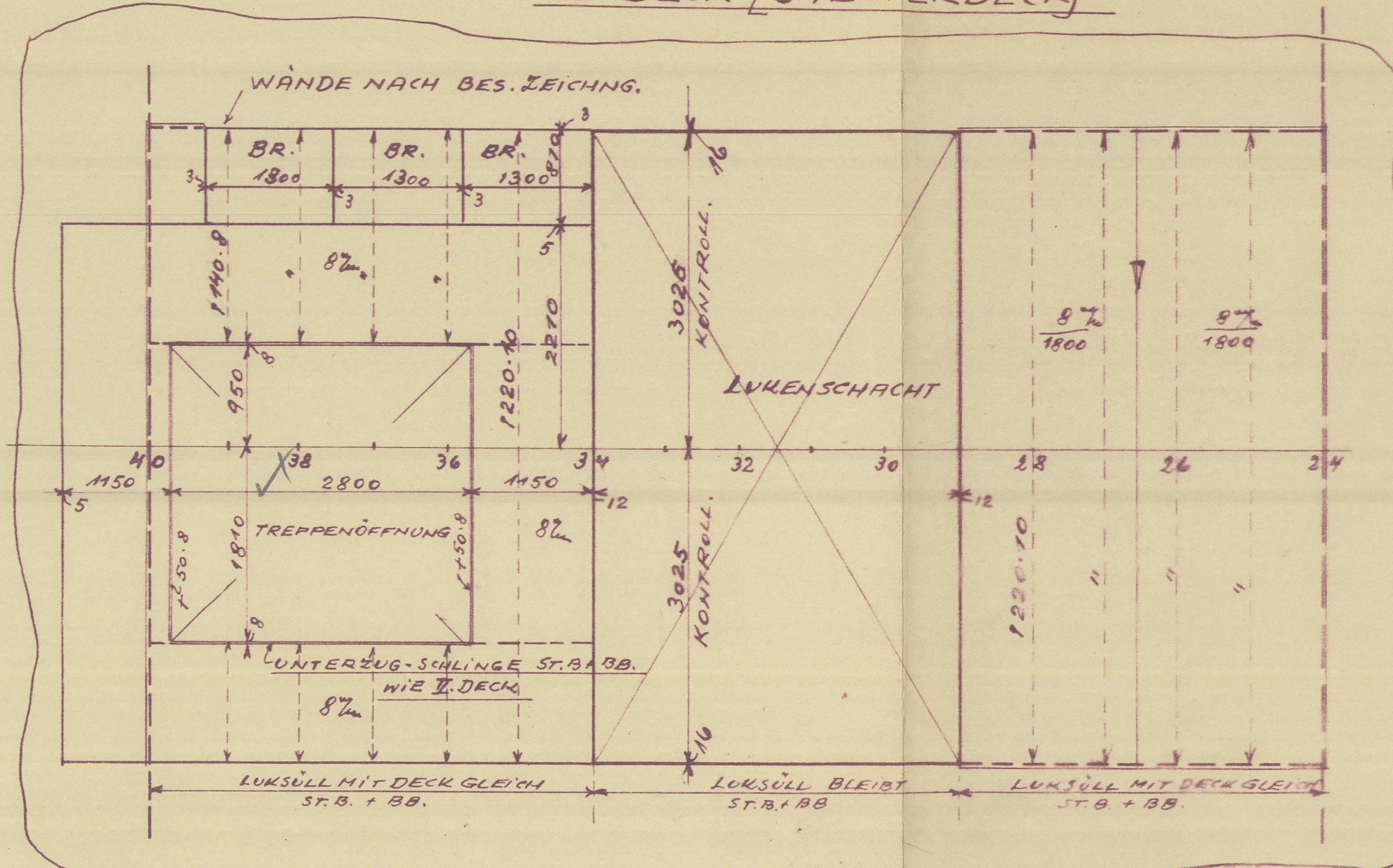
LUKE SPT. 24-40
D-DECK [III. DECK]



LUKE SPT. 24-40
C-DECK [II. DECK]



LUKE SPT. 24-40
B-DECK [SHELTERDECK]



TO ACCOMPANY. 51911 REPORT No. 1205
DATED 21.12.1953

Norddeutscher Lloyd
Geschäftsstelle Bremerhaven
21.12.1953.
Ausgang S 8954

SPANTENTFERNG. 13-47 = 685,87%
" " 47-65 = 762%

Stem opening middle checked
OK
414/115

N.D.L. BREMERHAVEN
M.S. SEVEN SEAS
LUKE SPT. 24-90
N: 1.50
ZEICHNUNG-NR 389-54
21.12.53

SURVEYORS COPY