

1187 FEB 1939

SHIP N° 239 & 245

STERNFRAME & RUDDER

SCALES: 1" = ONE FOOT & AS SHOWN

A = 19.6815 D = .875 A x D 17.222

SPEED NOT EXCEEDING 12 KNOTS

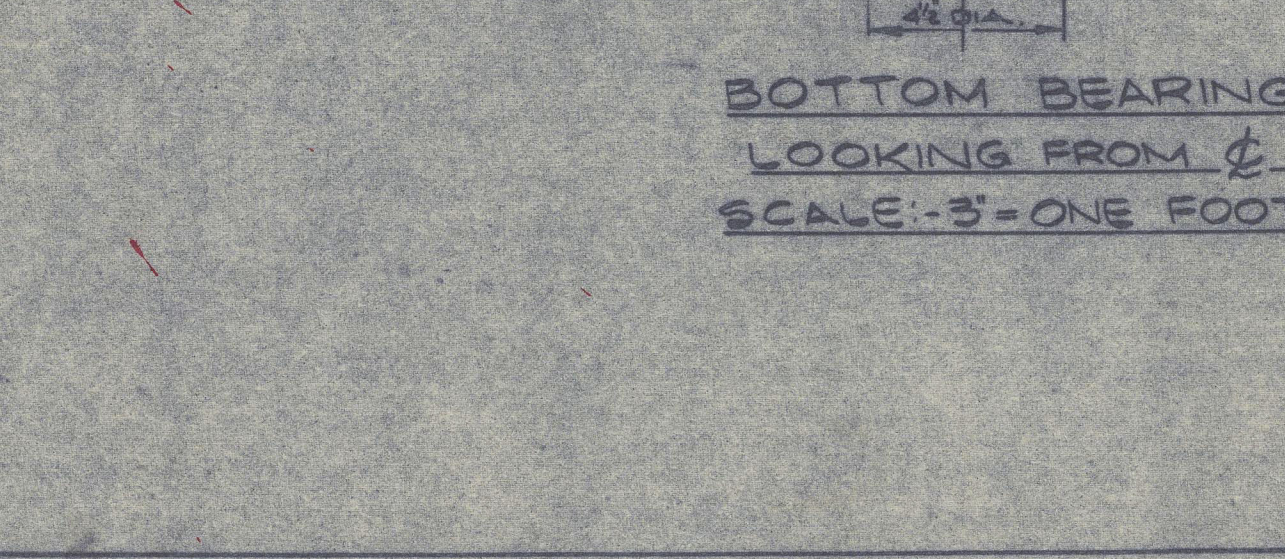
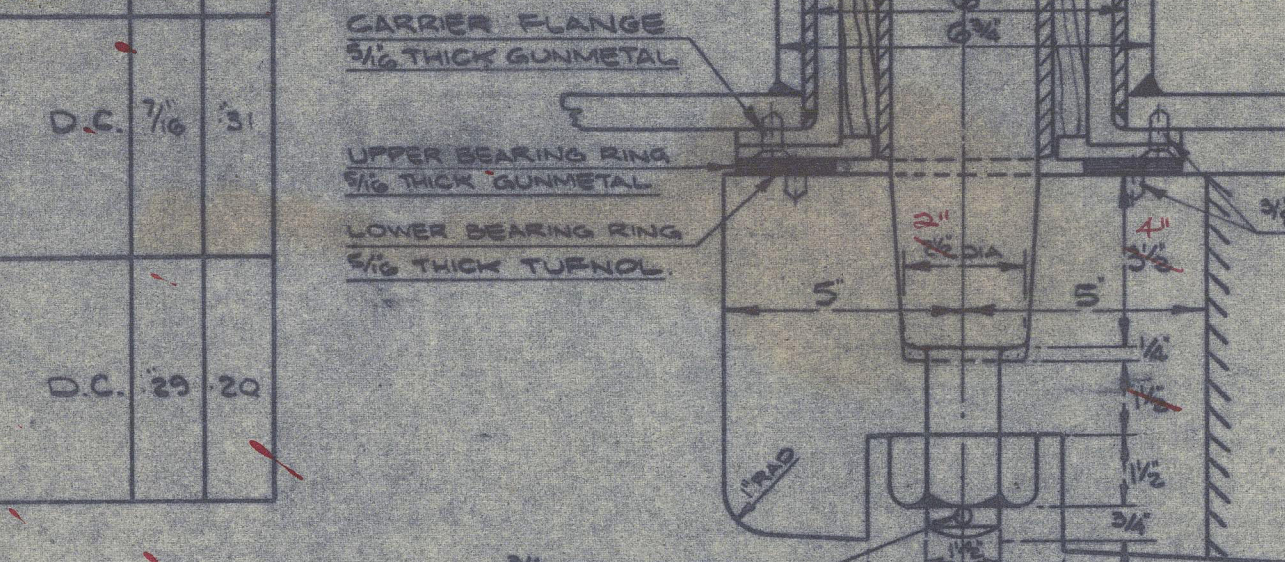
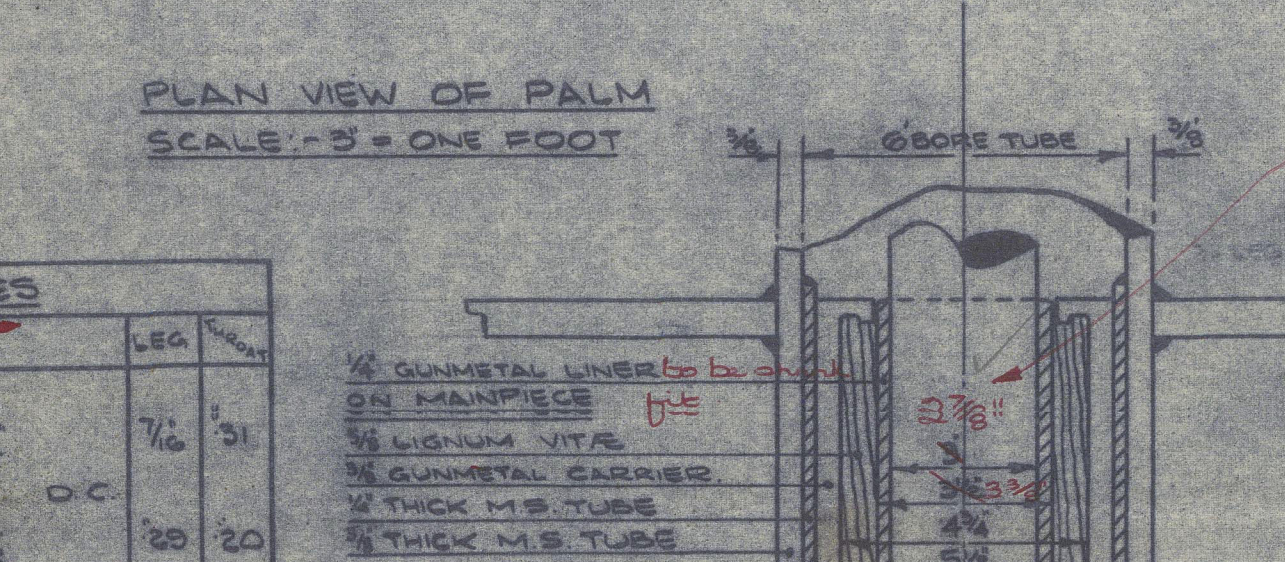
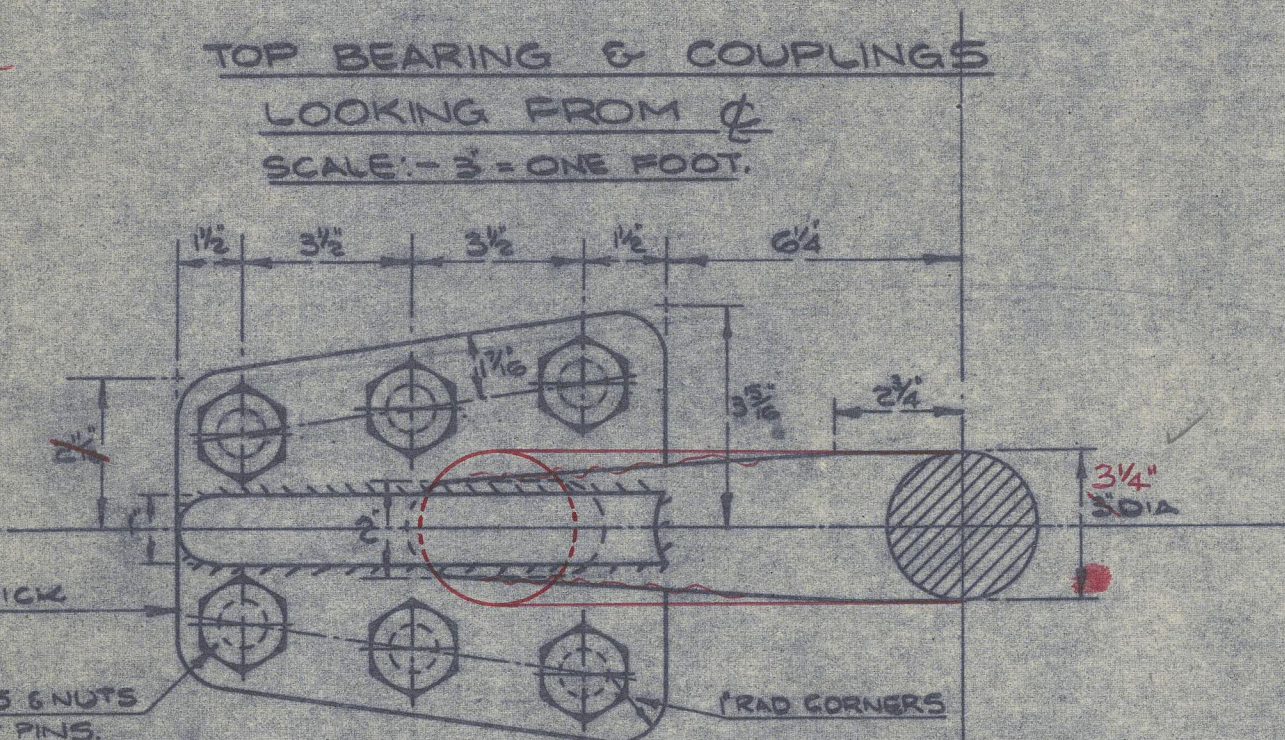
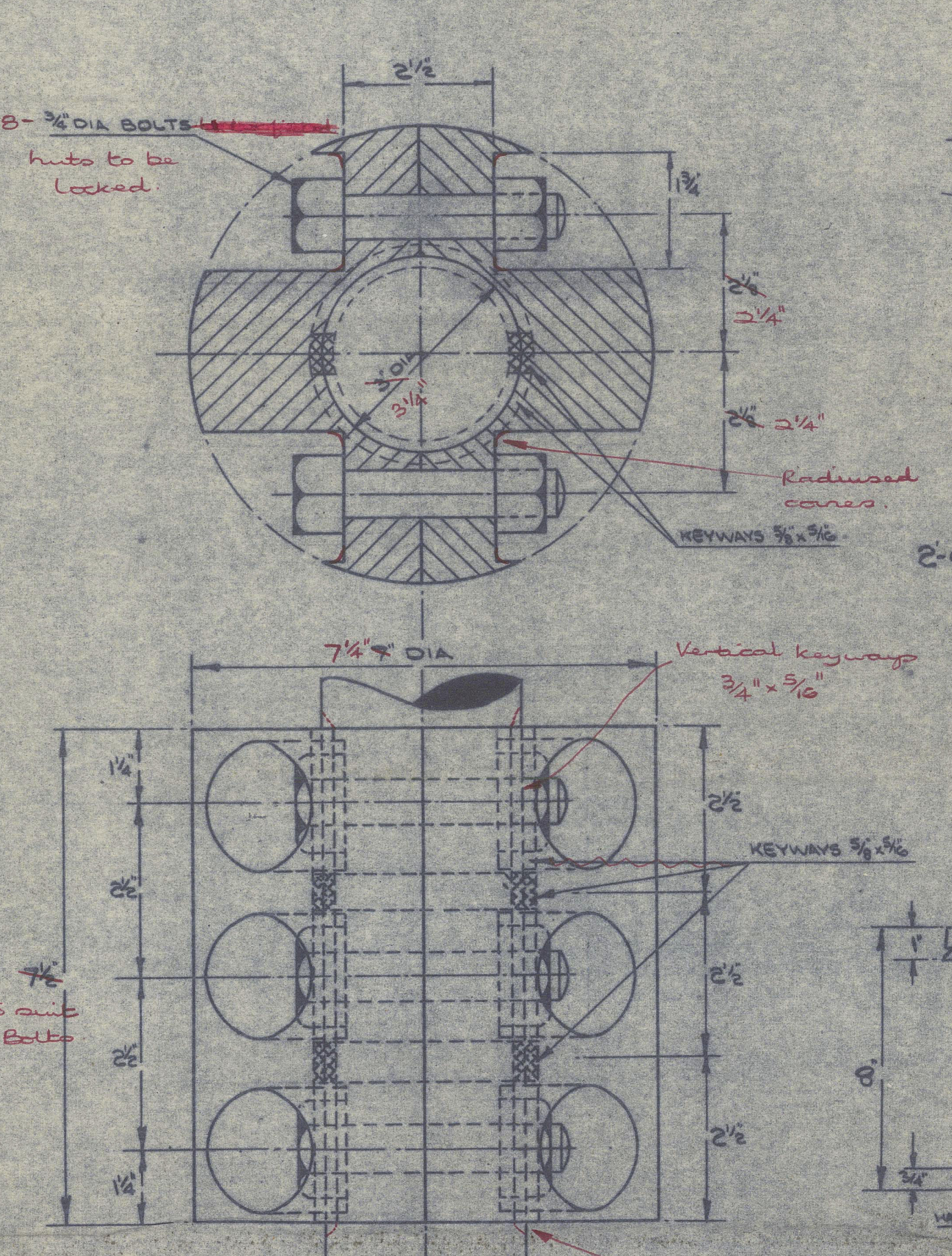
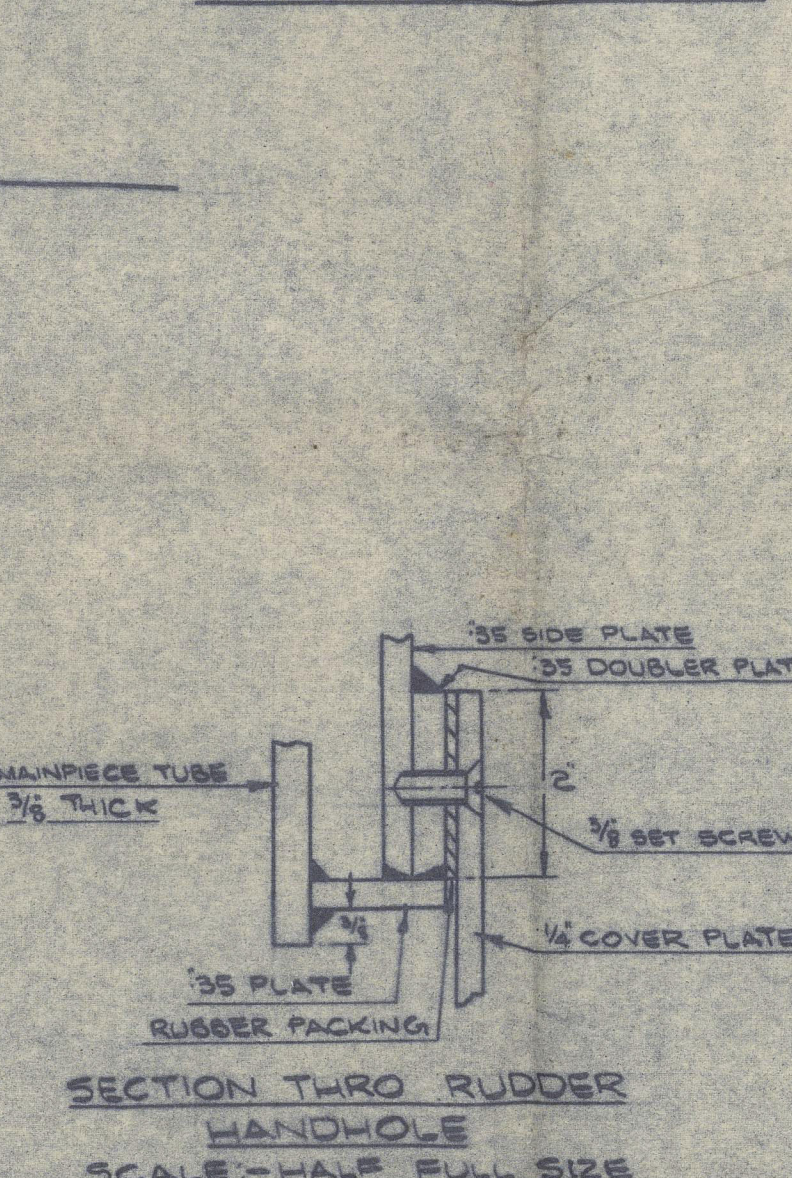
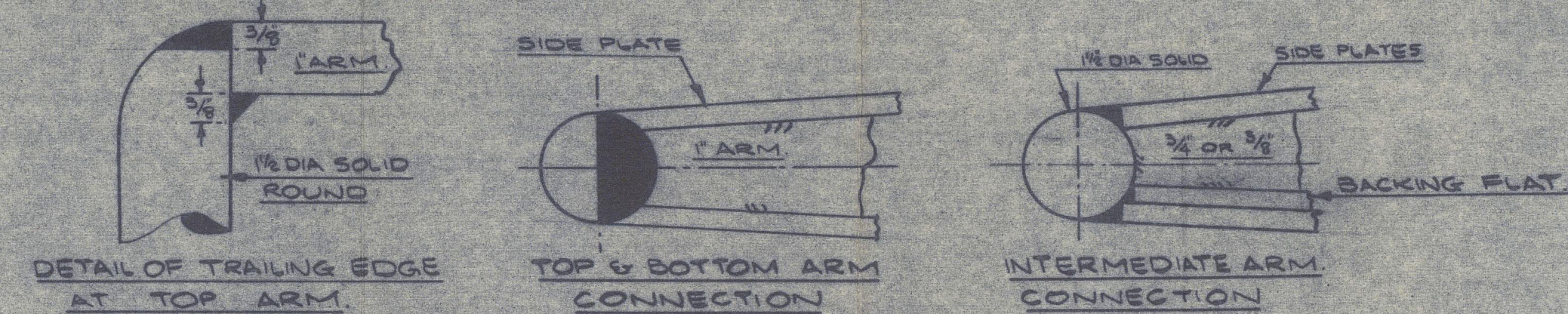
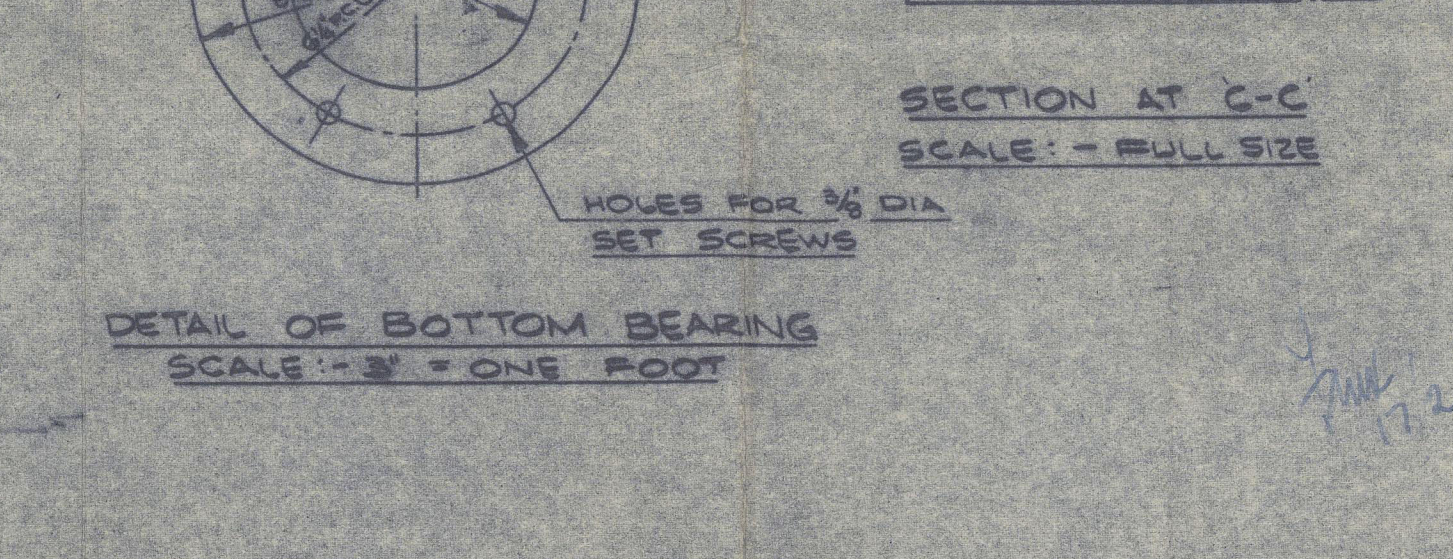
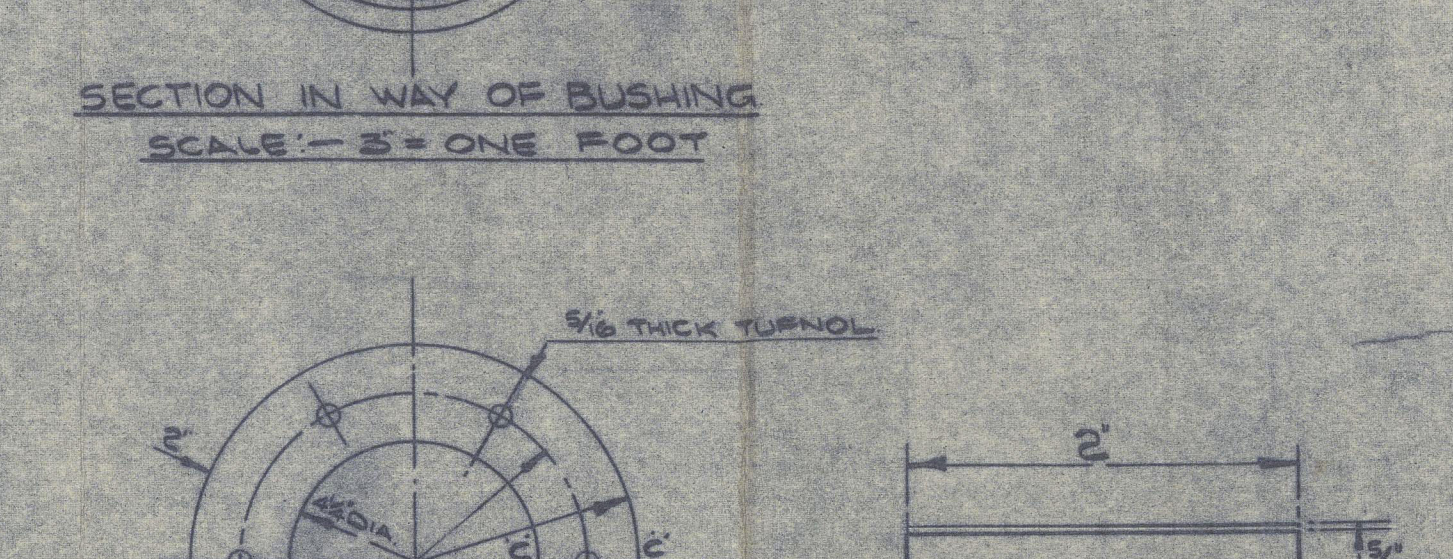
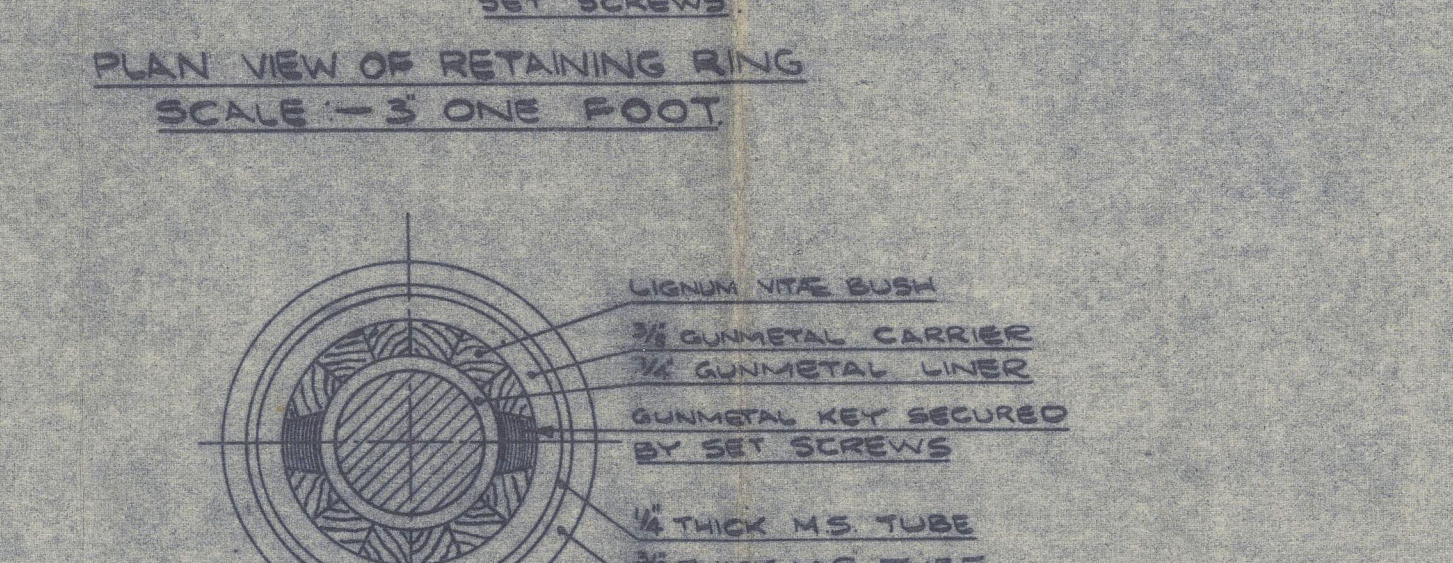
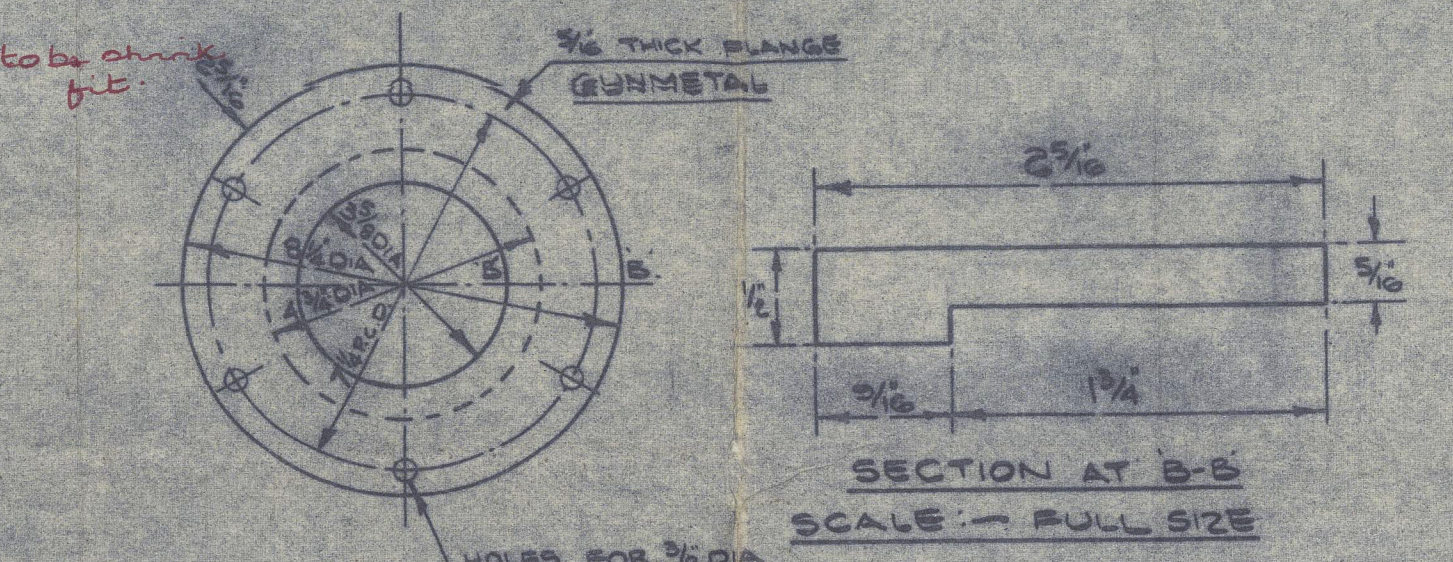
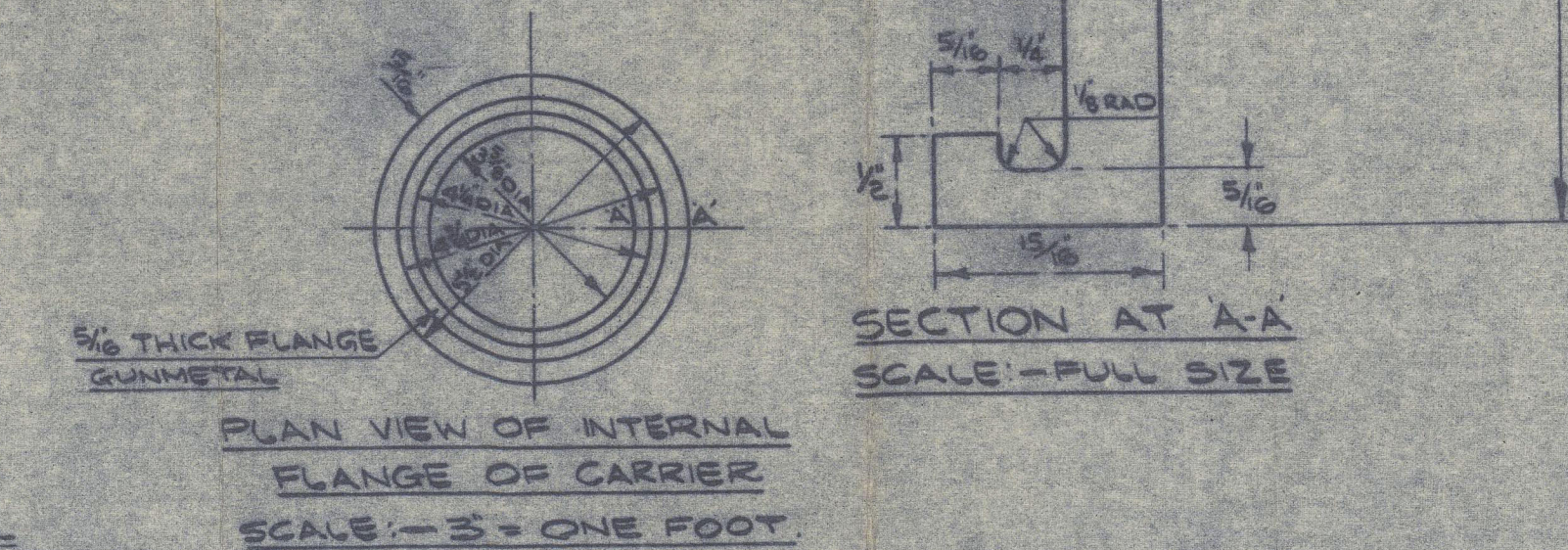
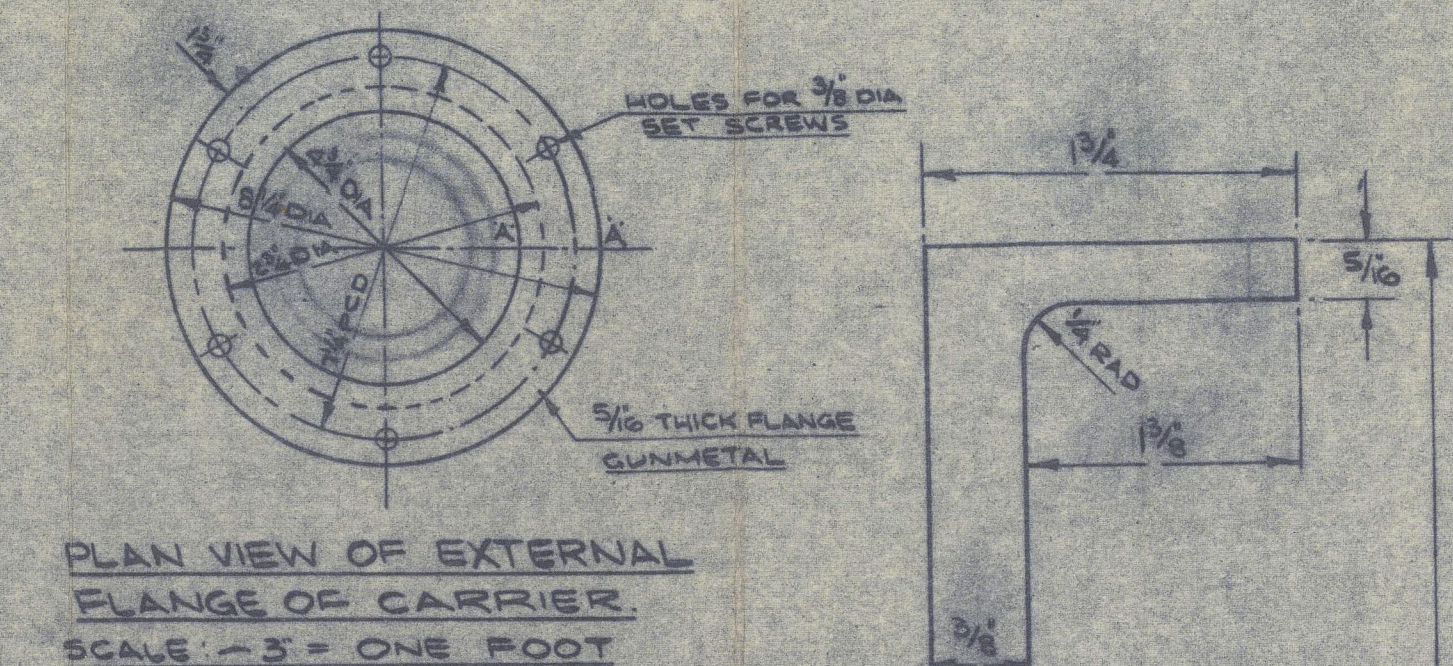
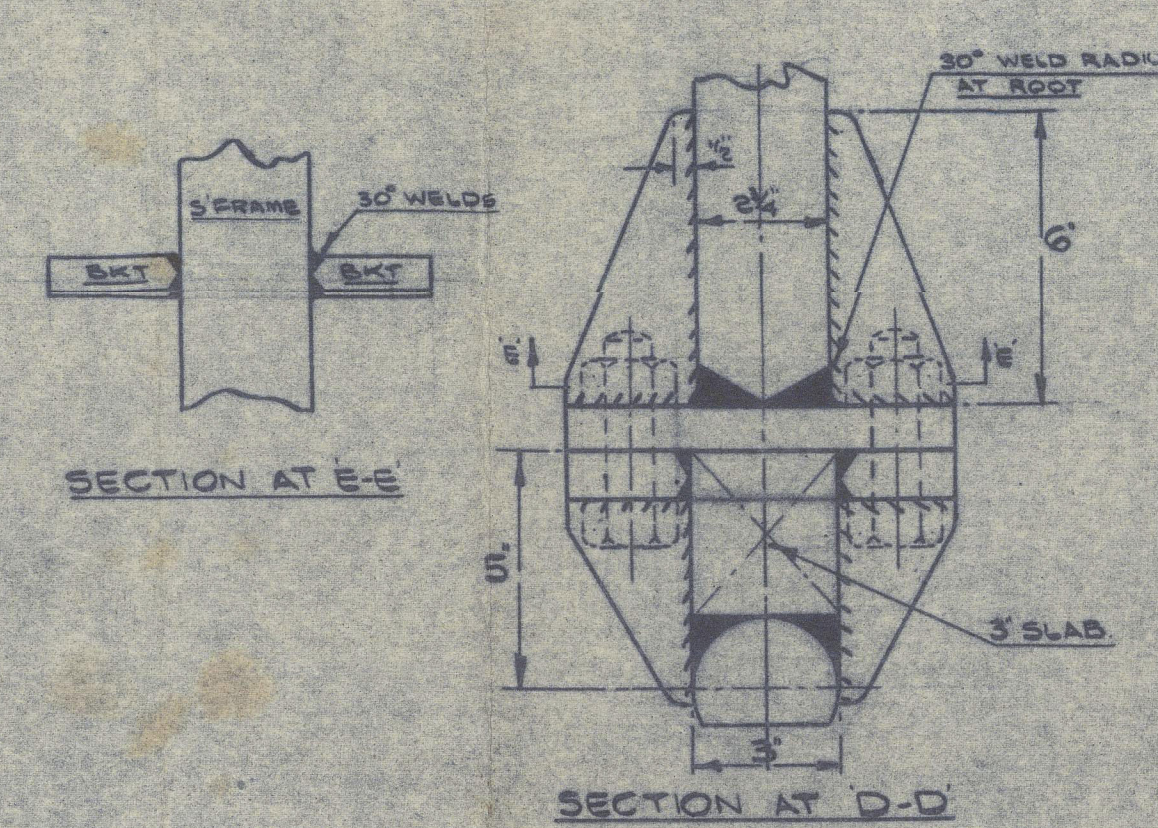
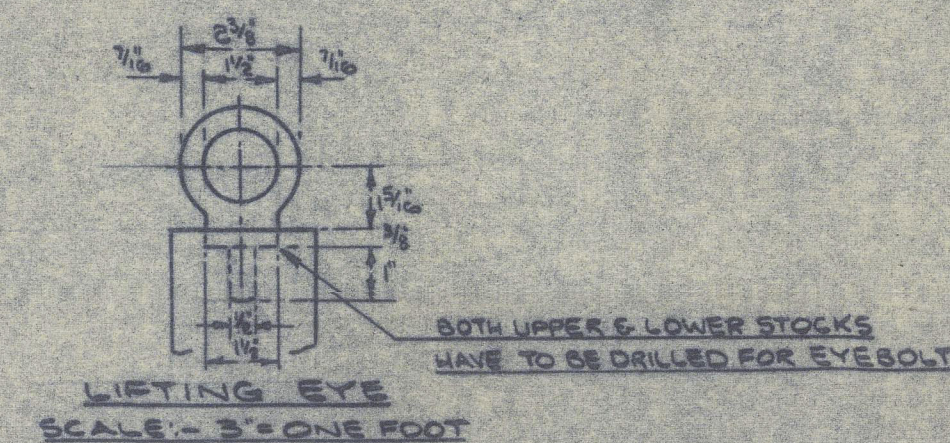
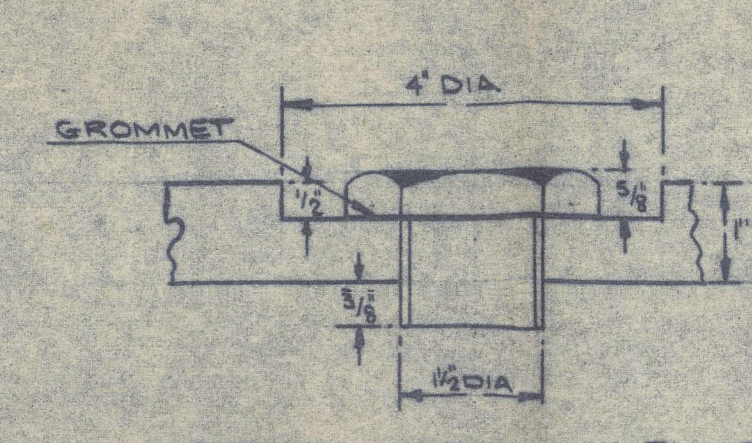
DIMENSIONS LENGTH B.P. 110'-3" BREADTH MLD 25'-0" DEPTH MLD 9'-2"

TO LLOYD'S CLASS: 100 A1

SCANTLINGS SUITABLE FOR A SUMMER DRAFT OF ABOUT 8'-8 1/2" MEASURED ABOVE TOP OF KEEL

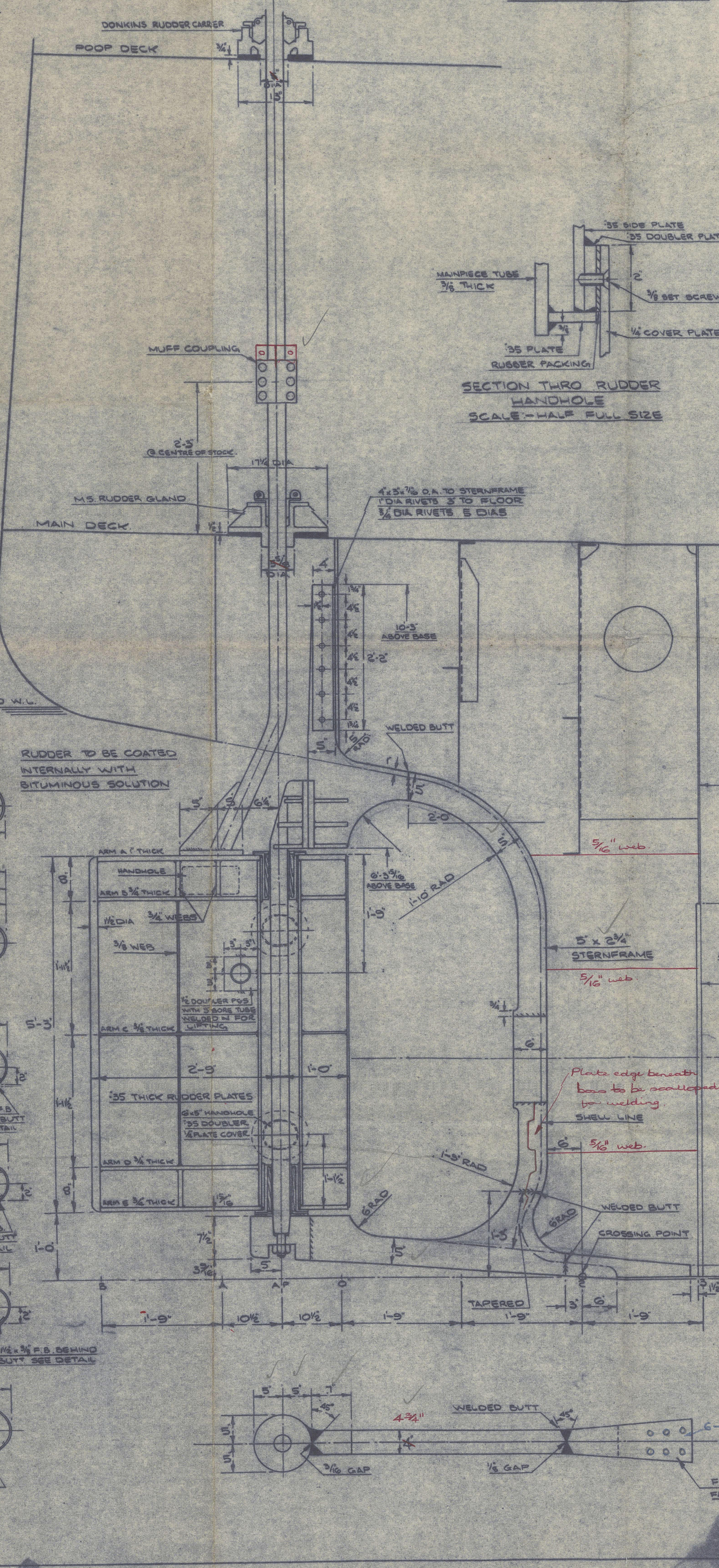
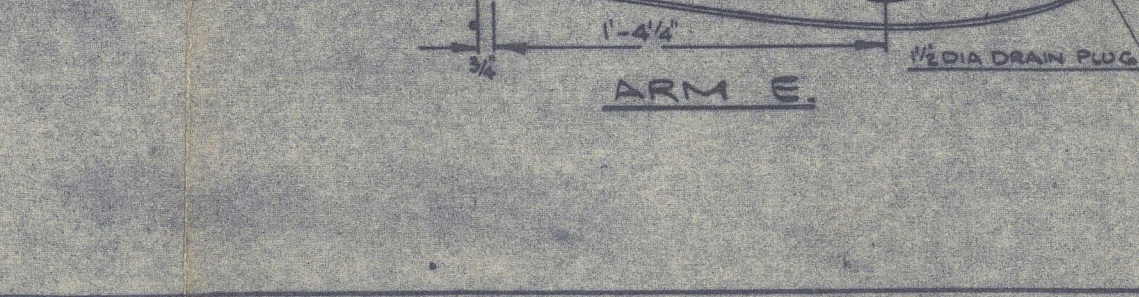
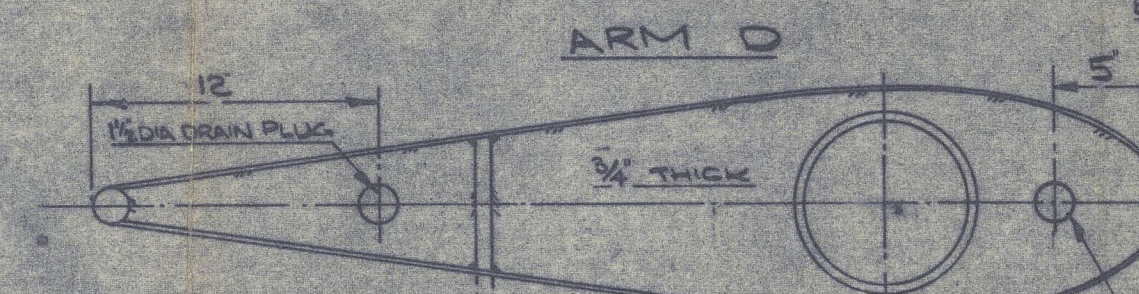
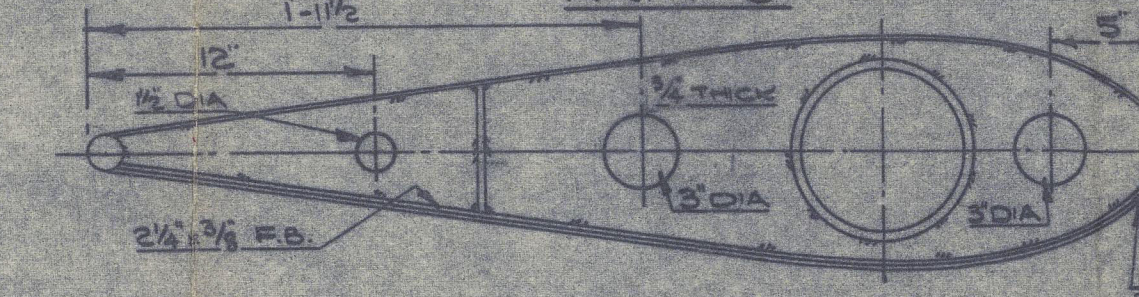
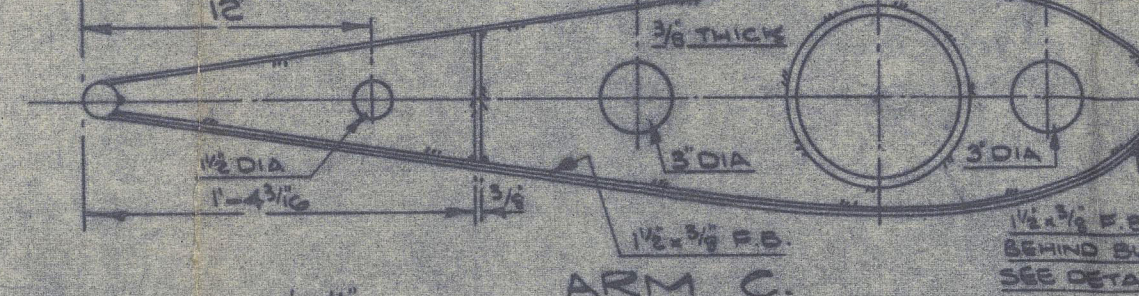
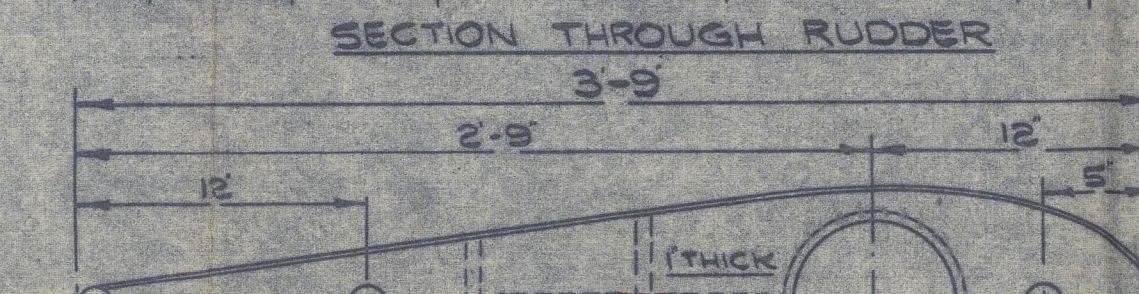
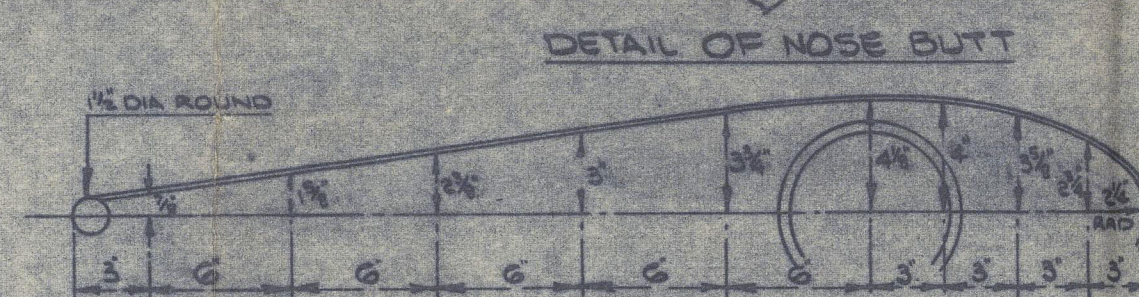
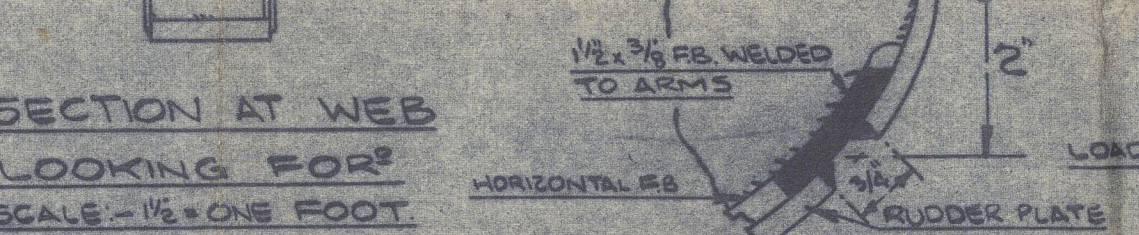
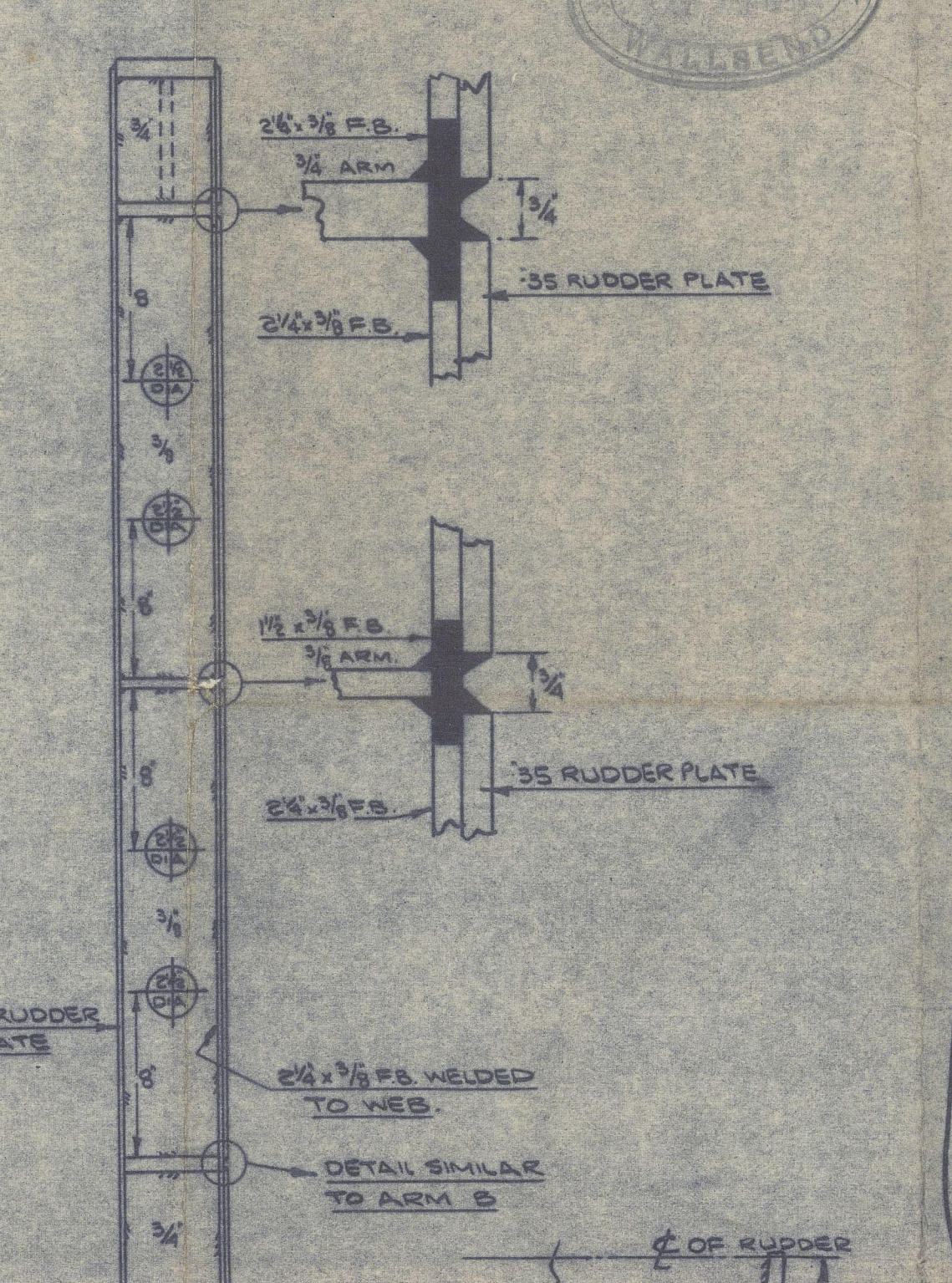
FRAME SPACING 21" THROUGHOUT

Carthage and/or Fittings to be of Welding Quality containing not more than 0.2% Carbon.



ITEM	WELDING NOTES	LEG
ARMS TO SIDE PLATES, HANDLES & BACKING PLATES	1/2" O.C.	1/2" 31
1/2" WEBS TO ARMS AND SIDE PLATES	1/2" O.C.	1/2" 31
1/2" WEBS TO ARMS AND SIDE PLATES	1/2" O.C.	1/2" 20

The Clearance Between the Propeller and the Sternframe is to be the Responsibility of the Builders and Owners.



CLELANDS (SUCCESSORS) LTD.

9



HUMBER GATE (YARD NO 245)

QUEENSGATE

(YARD NO 239)

STERNFRAME & RUDDER

239. / NEWCASTLE-ON-TYNE, F.E. No. 116756.

245. / NEWCASTLE-ON-TYNE, F.E. No. 117050.

RECEIVED
DEPT

10



© 2021

Lloyd's Register
Foundation

012818-012826-0006