

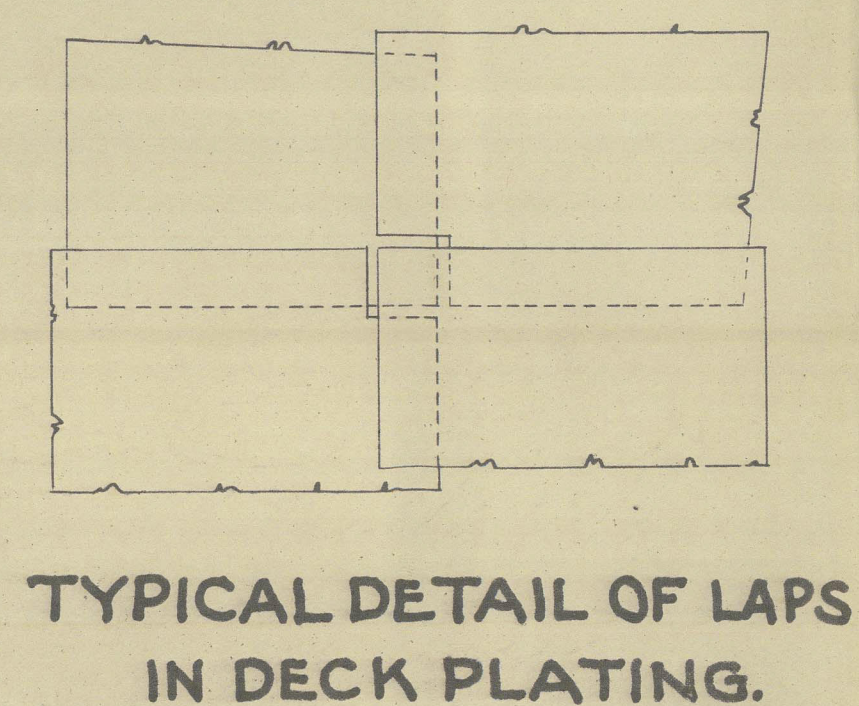
DETAIL @ C.
SCALE 1/4"=1'-0"
LOOKING OUTBOARD.

SECTION @ FRAME 60 LOOKING AFT.
SCALE 1/4"=1'-0"
SIMILAR IN WAY OF OTHER HATCH END BEAMS.

SOLID FLOORS IN HOLDS TO BE 14.7" @ 19.6" @ IN MACHINERY SPACE AND 19.6" @ AT TANK ENDS. SOLID FLOORS ON FRAMES FORWARD OF 3/5 L AND ON EVERY FIFTH FRAME ELSEWHERE.

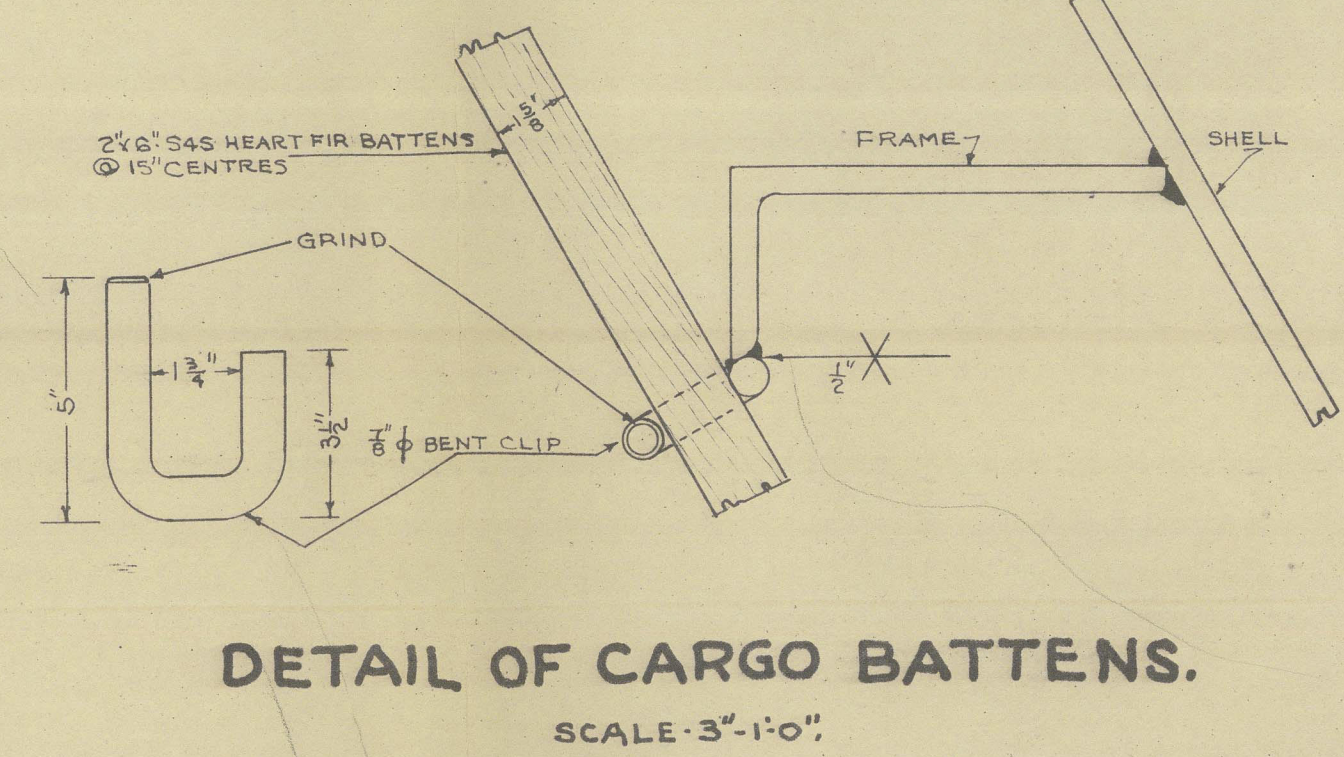
DETAIL @ B.
SCALE 1/4"=1'-0"
TYPICAL FRAMING BETWEEN FRAMES 40-57.

SECTION FRAME 87-LOOKING FORWARD.
SCALE 1/4"=1'-0"
SECTION TAKEN ON FRAME LINE



DETAIL @ A.
SCALE 1/4"=1'-0"
LOOKING FORWARD.

SECTION @ FRAME 43 LOOKING FORWARD.
SCALE 1/4"=1'-0"



ALTERATIONS			
NO. PANEL	DESCRIPTION	DATE	APPROVED BY
1	THIS PLAN MADE APPLICABLE TO HULLS 284, 303, 313, 314, E.C.N. 949.	10.1.44	1.0

GENERAL NOTES

- ALL ANGLES & FLANGED PLATES USED AS BEAMS OR STIFFENERS ARE INVERTED UNLESS OTHERWISE SHOWN.
- ALL BULKHEADS TO BE MADE WATER TIGHT BETWEEN SECOND & SHELTER DECK EXCEPT IN WAY OF TONNAGE OPENINGS, TO COMPLY NAVY DEPARTMENT REQUEST.

EQUIPMENT TONNAGE		
SPACE	CALCULATIONS	TONS
UNDER FREE BOARD DECK	350 x 60 x 28.25 x 10	4877
SUPER STRUCTURE	390 x 60 x 3.25 x 75	1070
HOUSE - 1ST - TIER	74 x 52 x 8.5 x 75	123
HOUSE - 2ND TIER	72 x 48 x 8.5 x 75	88
	250	5908

EQUIPMENT NUMERAL - C-37(S)

2 BOWERS ANCHORS WEIGHT, STOCKLESS (EACH) 87225#
 1 BOWER ANCHOR WEIGHT, STOCKLESS (EACH) 7000#
 1 STREAM ANCHOR WEIGHT, STOCKLESS (EACH) 2915#
 210 FATHOMS, 2" DIA. STUD CHAIN (CAST OR FORGED STEEL)
 90 FATHOMS, 1 1/2" DIA. WIRE ROPE 5/24" TON LINE
 130 FATHOMS, 1 1/2" DIA. WIRE ROPE 5/24" TON LINE
 2-90 FATHOM EACH, 8" CIRC., MANILA HAWPERS.
 2-90 FATHOM EACH, 7" CIRC., MANILA HAWPERS.

CLASSIFICATION	
AMERICAN BUREAU OF SHIPPING, INC.	
PRINCIPAL DIMENSIONS	
LENGTH OVER ALL	412'-3"
LENGTH BETWEEN PERPENDICULARS	390'-0"
BEAM MOLDED	60'-0"
DRAFT MOLDED (LOAD WATER LINE)	23'-6"
DEPTH TO SHELTER DECK	37'-6"
DEPTH TO SECOND DECK	28'-3"
DEPTH TO THIRD DECK	18'-3"

REFERENCE PLANS		
NO.	TITLE	PSYDR. NO. PLAN NO.
1	STRUCTURAL PROFILE, ETC.	TA-3 138-SH-171
2	WELDING SCHEDULE	TC-1 138-SH-62
3	WELDING SCHEDULE - DETAILS	TC-1A 138-SH-61
4	WELDING SCHEDULE	TC-1B 138-SH-65
5	SHELL EXPANSION	TC-2Y 138-SH-14
6	FRAMES FORWARD OF MIDSHIP	TC-4Y 138-SH-3-9
7	DOUBLE BOTTOM FORWARD OF FRAME 92	TC-6AY 138-SH-23
8	THIRD DECK FORWARD - PLATING - BEAMS, ETC.	TC-22 138-SH-8-1
9	SECOND DECK FORWARD - PLATING - BEAMS, ETC.	TC-24 138-SH-6-6
10	SHELTER DECK FORWARD - PLATING - BEAMS, ETC.	TC-26 138-SH-6-2
11	DETAILS OF WELDED HATCH GIRDERS	C1-35
12	SHELTER DECK AFT END, PLATING - BEAMS, GIRDERS, ETC.	TC-25 138-SH-8-3

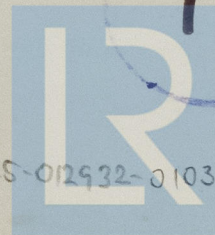
13	138-SH-8-4	138-SH-8-5
14	138-SH-8-6	138-SH-8-7
15	138-SH-8-8	138-SH-8-9
16	138-SH-8-10	138-SH-8-11
17	138-SH-8-12	138-SH-8-13
18	138-SH-8-14	138-SH-8-15
19	138-SH-8-16	138-SH-8-17
20	138-SH-8-18	138-SH-8-19
21	138-SH-8-20	138-SH-8-21
22	138-SH-8-22	138-SH-8-23
23	138-SH-8-24	138-SH-8-25
24	138-SH-8-26	138-SH-8-27
25	138-SH-8-28	138-SH-8-29
26	138-SH-8-30	138-SH-8-31
27	138-SH-8-32	138-SH-8-33
28	138-SH-8-34	138-SH-8-35
29	138-SH-8-36	138-SH-8-37
30	138-SH-8-38	138-SH-8-39
31	138-SH-8-40	138-SH-8-41
32	138-SH-8-42	138-SH-8-43
33	138-SH-8-44	138-SH-8-45
34	138-SH-8-46	138-SH-8-47
35	138-SH-8-48	138-SH-8-49
36	138-SH-8-50	138-SH-8-51
37	138-SH-8-52	138-SH-8-53
38	138-SH-8-54	138-SH-8-55
39	138-SH-8-56	138-SH-8-57
40	138-SH-8-58	138-SH-8-59
41	138-SH-8-60	138-SH-8-61
42	138-SH-8-62	138-SH-8-63
43	138-SH-8-64	138-SH-8-65
44	138-SH-8-66	138-SH-8-67
45	138-SH-8-68	138-SH-8-69
46	138-SH-8-70	138-SH-8-71
47	138-SH-8-72	138-SH-8-73
48	138-SH-8-74	138-SH-8-75
49	138-SH-8-76	138-SH-8-77
50	138-SH-8-78	138-SH-8-79
51	138-SH-8-80	138-SH-8-81
52	138-SH-8-82	138-SH-8-83
53	138-SH-8-84	138-SH-8-85
54	138-SH-8-86	138-SH-8-87
55	138-SH-8-88	138-SH-8-89
56	138-SH-8-90	138-SH-8-91
57	138-SH-8-92	138-SH-8-93
58	138-SH-8-94	138-SH-8-95
59	138-SH-8-96	138-SH-8-97
60	138-SH-8-98	138-SH-8-99
61	138-SH-8-100	138-SH-8-101
62	138-SH-8-102	138-SH-8-103
63	138-SH-8-104	138-SH-8-105
64	138-SH-8-106	138-SH-8-107
65	138-SH-8-108	138-SH-8-109
66	138-SH-8-110	138-SH-8-111
67	138-SH-8-112	138-SH-8-113
68	138-SH-8-114	138-SH-8-115
69	138-SH-8-116	138-SH-8-117
70	138-SH-8-118	138-SH-8-119
71	138-SH-8-120	138-SH-8-121
72	138-SH-8-122	138-SH-8-123
73	138-SH-8-124	138-SH-8-125
74	138-SH-8-126	138-SH-8-127
75	138-SH-8-128	138-SH-8-129
76	138-SH-8-130	138-SH-8-131
77	138-SH-8-132	138-SH-8-133
78	138-SH-8-134	138-SH-8-135
79	138-SH-8-136	138-SH-8-137
80	138-SH-8-138	138-SH-8-139
81	138-SH-8-140	138-SH-8-141
82	138-SH-8-142	138-SH-8-143
83	138-SH-8-144	138-SH-8-145
84	138-SH-8-146	138-SH-8-147
85	138-SH-8-148	138-SH-8-149
86	138-SH-8-150	138-SH-8-151
87	138-SH-8-152	138-SH-8-153
88	138-SH-8-154	138-SH-8-155
89	138-SH-8-156	138-SH-8-157
90	138-SH-8-158	138-SH-8-159
91	138-SH-8-160	138-SH-8-161
92	138-SH-8-162	138-SH-8-163
93	138-SH-8-164	138-SH-8-165
94	138-SH-8-166	138-SH-8-167
95	138-SH-8-168	138-SH-8-169
96	138-SH-8-170	138-SH-8-171
97	138-SH-8-172	138-SH-8-173
98	138-SH-8-174	138-SH-8-175
99	138-SH-8-176	138-SH-8-177
100	138-SH-8-178	138-SH-8-179
101	138-SH-8-180	138-SH-8-181
102	138-SH-8-182	138-SH-8-183
103	138-SH-8-184	138-SH-8-185
104	138-SH-8-186	138-SH-8-187
105	138-SH-8-188	138-SH-8-189
106	138-SH-8-190	138-SH-8-191
107	138-SH-8-192	138-SH-8-193
108	138-SH-8-194	138-SH-8-195
109	138-SH-8-196	138-SH-8-197
110	138-SH-8-198	138-SH-8-199
111	138-SH-8-200	138-SH-8-201
112	138-SH-8-202	138-SH-8-203
113	138-SH-8-204	138-SH-8-205
114	138-SH-8-206	138-SH-8-207
115	138-SH-8-208	138-SH-8-209
116	138-SH-8-210	138-SH-8-211
117	138-SH-8-212	138-SH-8-213
118	138-SH-8-214	138-SH-8-215
119	138-SH-8-216	138-SH-8-217
120	138-SH-8-218	138-SH-8-219
121	138-SH-8-220	138-SH-8-221
122	138-SH-8-222	138-SH-8-223
123	138-SH-8-224	138-SH-8-225
124	138-SH-8-226	138-SH-8-227
125	138-SH-8-228	138-SH-8-229
126	138-SH-8-230	138-SH-8-231
127	138-SH-8-232	138-SH-8-233
128	138-SH-8-234	138-SH-8-235
129	138-SH-8-236	138-SH-8-237
130	138-SH-8-238	138-SH-8-239
131	138-SH-8-240	138-SH-8-241
132	138-SH-8-242	138-SH-8-243
133	138-SH-8-244	138-SH-8-245
134	138-SH-8-246	138-SH-8-247
135	138-SH-8-248	138-SH-8-249
136	138-SH-8-250	138-SH-8-251
137	138-SH-8-252	138-SH-8-253
138	138-SH-8-254	138-SH-8-255
139	138-SH-8-256	138-SH-8-257
140	138-SH-8-258	138-SH-8-259
141	138-SH-8-260	138-SH-8-261
142	138-SH-8-262	138-SH-8-263
143	138-SH-8-264	138-SH-8-265
144	138-SH-8-266	138-SH-8-267
145	138-SH-8-268	138-SH-8-269
146	138-SH-8-270	138-SH-8-271
147	138-SH-8-272	138-SH-8-273
148	138-SH-8-274	138-SH-8-275
149	138-SH-8-276	138-SH-8-277
150	138-SH-8-278	138-SH-8-279
151	138-SH-8-280	138-SH-8-281
152	138-SH-8-282	138-SH-8-283
153	138-SH-8-284	138-SH-8-285
154	138-SH-8-286	138-SH-8-287
155	138-SH-8-288	138-SH-8-289
156	138-SH-8-290	138-SH-8-291
157	138-SH-8-292	138-SH-8-293
158	138-SH-8-294	138-SH-8-295
159	138-SH-8-296	138-SH-8-297
160	138-SH-8-298	138-SH-8-299
161	138-SH-8-300	138-SH-8-301
162	138-SH-8-302	138-SH-8-303
163	138-SH-8-304	138-SH-8-305
164	138-SH-8-306	138-SH-8-307
165	138-SH-8-308	138-SH-8-309
166	138-SH-8-310	138-SH-8-311
167	138-SH-8-312	138-SH-8-313
168	138-SH-8-314	138-SH-8-315
169	138-SH-8-316	138-SH-8-317
170	138-SH-8-318	138-SH-8-319
171	138-SH-8-320	138-SH-8-321
172	138-SH-8-322	138-SH-8-323
173	138-SH-8-324	138-SH-8-325
174	138-SH-8-326	138-SH-8-327
175	138-SH-8-328	138-SH-8-329
176	138-SH-8-330	138-SH-8-331
177	138-SH-8-332	138-SH-8-333
178	138-SH-8-334	138-SH-8-335
179	138-SH-8-336	138-SH-8-337
180	138-SH-8-338	138-SH-8-339
181	138-SH-8-340	138-SH-8-341
182	138-SH-8-342	138-SH-8-343
183	138-SH-8-344	138-SH-8-345
184	138-SH-8-346	138-SH-8-347
185	138-SH-8-348	138-SH-8-349
186	138-SH-8-350	138-SH-8-351
187	138-SH-8-352	138-SH-8-353
188	138-SH-8-354	138-SH-8-355
189	138-SH-8-356	138-SH-8-357
190	138-SH-8-358	138-SH-8-359
191	138-SH-8-360	138-SH-8-361
192	138-SH-8-362	138-SH-8-363
193	138-SH-8-364	138-SH-8-365
194	138-SH-8-366	138-SH-8-367
195	138-SH-8-368	138-SH-8-369
196	138-SH-8-370	138-SH-8-371
197	138-SH-8-372	138-SH-8-373
198	138-SH-8-374	138-SH-8-375
199	138-SH-8-376	138-SH-8-377
200	138-SH-8-378	138-SH-8-379
201	138-SH-8-380	138-SH-8-381
202	138-SH-8-382	138-SH-8-383
203	138-SH-8-384	138-SH-8-385
204	138-SH-8-386	138-SH-8-387
205	138-SH-8-388	138-SH-8-389
206	138-SH-8-390	138-SH-8-391
207	138-SH-8-392	138-SH-8-393
208	138-SH-8-394	138-SH-8-395
209	138-SH-8-396	138-SH-8-397
210	138-SH-8-398	138-SH-8-399
211	138-SH-8-400	138-SH-8-401
212	138-SH-8-402	138-SH-8-403
213	138-SH-8-404	138-SH-8-405
214	138-SH-8-406	138-SH-8-407
215	138-SH-8-408	138-SH-8-409
216	138-SH-8-410	138-SH-8-411
217	138-SH-8-412	138-SH-8-413
218	138-SH-8-414	138-SH-8-415
219	138-SH-8-416	138-SH-8-417
220	138-SH-8-418	138-SH-8-419
221	138-SH-8-420	138-SH-8-421
222	138-SH-8-422	138-SH-8-423
223	138-SH-8-424	138-SH-8-425
224	138-SH-8-426	138-SH-8-427
225	138-SH-8-428	138-SH-8-429
226	138-SH-8-430	138-SH-8-431
227	138-SH-8-432	138-SH-8-433
228	138-SH-8-434	138-SH-8-435

ROSSEVERETT



MIDSHIP SECTION

RECORDS DEPT.
LONDON



012425-012532-0103

© 2021

Lloyd's Register
Foundation

PLAN No

SII-17-1

SII 6-2

S29-6-1

S29-6-3

SII-1-4

SII-3-9

SII-2-3

SII-6-1

SII-6-6

SII-6-2

SII-6-3