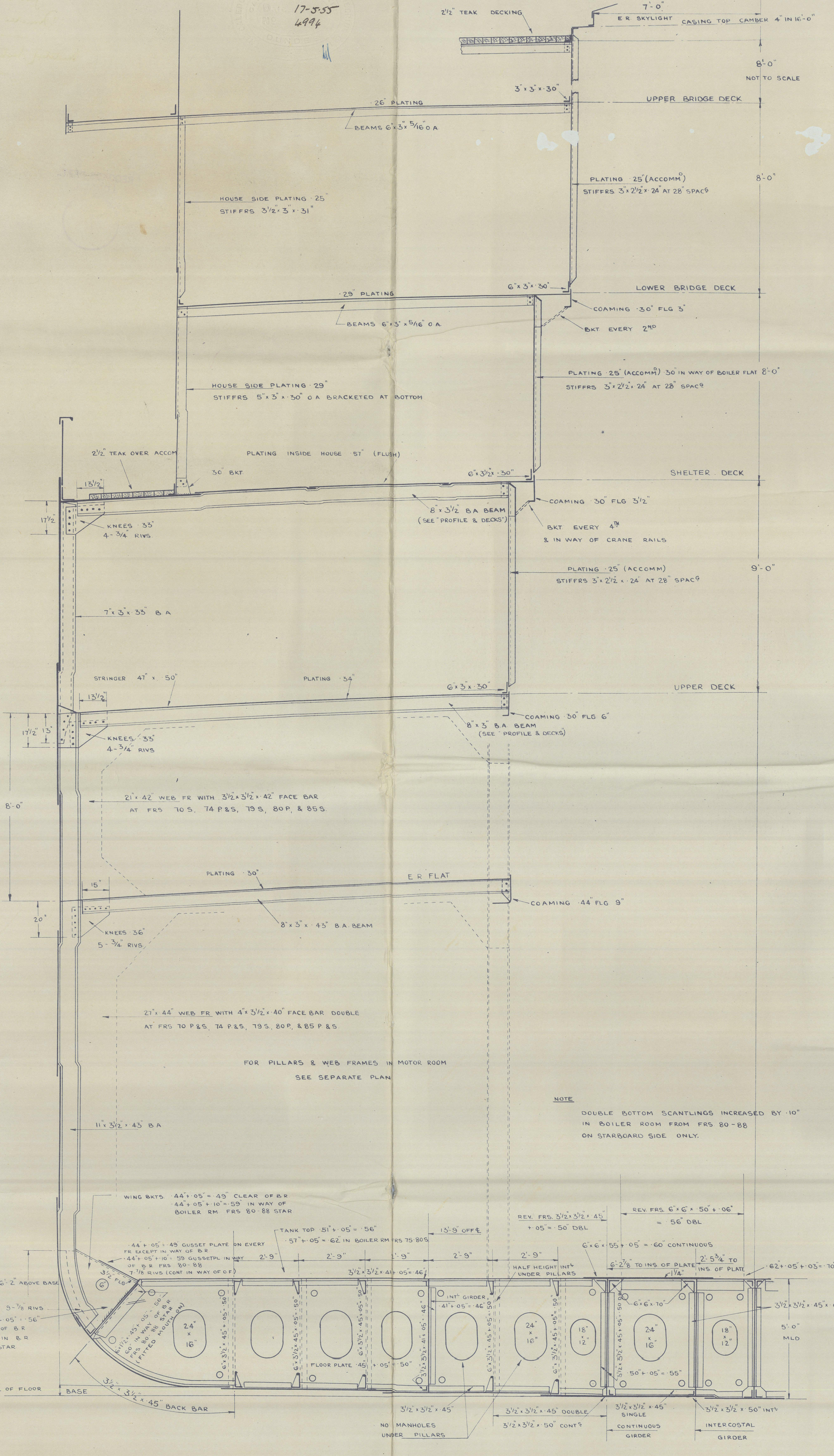


17-335
6484



M.V. "WOOLWICH". MIDSHIP SECTION.

SCALE 1/2" = 1 FOOT
MOULDED DIMENSIONS - 435'-0" x 58'-6" x 38'-0" TO SHELTER DK.
CLASS 100 A1 LLOYDS. MOULDED DRAFT 26' 9 3/4"

FRAME SPACING	
26 IN. AT PEAK AND FROM PEAK FORWARD	
22 BETWEEN FR. IN LUG. AND THE COLLISION BULKHEAD	
28 ELSEWHERE	

STEEL 10 x 2 1/2"	
FOR STEAMFRAMES SEE DETAIL PLAN	
EQUIPMENT TO RULE	

DOUBLE BOTTOM SCANTLINGS

ITEM	4L AND SHIPS	FOR L. AT ENDS	REMARKS	MOTOR ROOM	BOILER RM
CENTRE GIRDER	45' x 55'	45' x 55'		60' x 55'	60' x 62'
BOTTOM ANGLES	5' x 5' x 1/2" DBL	5' x 5' x 1/2" DBL		51'	61'
TOP	5' x 5' x 1/2" DBL	5' x 5' x 1/2" DBL		50' x 2	60' x 2
VERTICAL	5' x 5' x 1/2" DBL	5' x 5' x 1/2" DBL		50' x 2	60' x 2
SIDE GIRDER	37' x 37'	37' x 37'		50' x 2	60' x 2
BOTTOM ANGLES	3' x 3' x 1/2" DBL	3' x 3' x 1/2" DBL		47'	51'
TOP	3' x 3' x 1/2" DBL	3' x 3' x 1/2" DBL		47'	51'
VERTICAL	3' x 3' x 1/2" DBL	3' x 3' x 1/2" DBL		47'	51'
FLOORS (LONG. SYSTEM)	5' x 5' x 1/2" DBL	5' x 5' x 1/2" DBL		47'	51'
FRAMES	3' x 3' x 1/2" DBL	3' x 3' x 1/2" DBL		47'	51'
REVERSE FRAMES	3' x 3' x 1/2" DBL	3' x 3' x 1/2" DBL		47'	51'
W.T. FLOORS	6' x 3' x 1/2" DBL	6' x 3' x 1/2" DBL		47'	51'
STIFFENERS	6' x 3' x 1/2" DBL	6' x 3' x 1/2" DBL		47'	51'
TANK MARGIN	38' x 51'	38' x 51'		47'	51'
SHELL CONNECTION	3' x 3' x 1/2" DBL	3' x 3' x 1/2" DBL		47'	51'
VERTICAL OUTSIDE	3' x 3' x 1/2" DBL	3' x 3' x 1/2" DBL		47'	51'
INSIDE	3' x 3' x 1/2" DBL	3' x 3' x 1/2" DBL		47'	51'
TANK WING BRACKET	3' x 3' x 1/2" DBL	3' x 3' x 1/2" DBL		47'	51'
TANK TOP CENTRE STRAKE	3' x 3' x 1/2" DBL	3' x 3' x 1/2" DBL		47'	51'
TANK TOP PLATING	3' x 3' x 1/2" DBL	3' x 3' x 1/2" DBL		47'	51'
LONGITUDINALS TO SHELL	3' x 3' x 1/2" DBL	3' x 3' x 1/2" DBL		47'	51'
TANK TOP	3' x 3' x 1/2" DBL	3' x 3' x 1/2" DBL		47'	51'

RIVETING

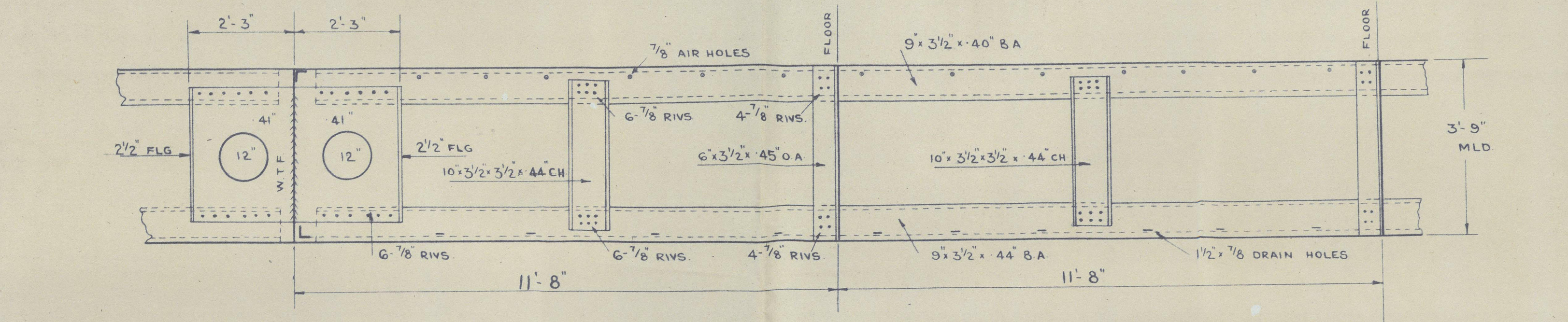
ITEM	END LAPS	EDGE LAPS
KEEL	4L x 4L	4L x 4L
BOTTOM SHELL	3	2
SIDE	4	2
SHEDDER	4	2
CENTRE GIRDER	3	2
MARGIN	WELDED	WELDED
TANK TOP CENTRE STRAKE	WELDED	WELDED
PLATING	WELDED	WELDED
SHELTER DK. STRINGER PLATE	5	2
PLATING	4	2
UPPER DK. STRINGER PLATE	WELDED	WELDED
PLATING	WELDED	WELDED

SPACING OF RIVETS IN DOUBLE BOTTOM

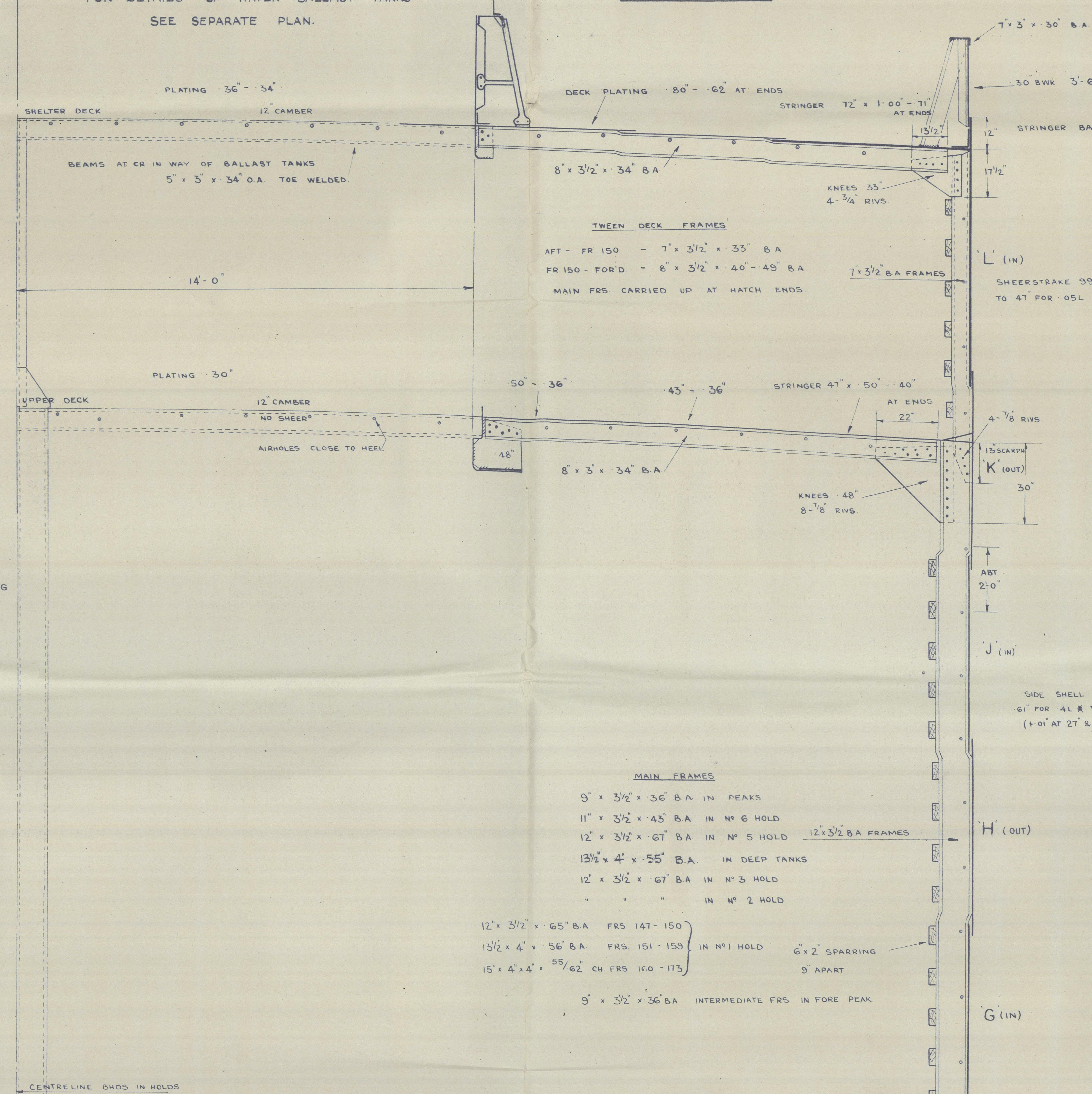
BOTTOM AND REV. FR. IN WAY OF LONG. PLANKS - 5 DIAS. 1/2" APART IN DOUBLE FR. AND REV. FR. (BOTH FLGS.)	
WHERE FLOORS SPACED MORE THAN 12' 0" APART	
FR. AND REV. FR. TO B.T. FLOORS - 7 DIAS. BOTH FLGS. 5 DIAS. IN MOTOR ROOM IN REV. FR. (BOTH FLGS.)	
CENTRE GIRDER - BOTTOM ANGLES - BOTH FLANGES SPACED 6" 0" CR. TO CR. REEL	
VERTICAL	
SIDE	
LONGIT. TO SHELL 5 DIAS. 5 1/2" DIAS. IN FORD. 7 1/2" DIAS. TO TANK TOP 5 DIAS. 5 1/2" DIAS. IN MOTOR RM.	
FLOORS, FR. CLEAR OF LONGIT. 7 DIAS. BOTH FLGS. FORD OF 14 1/2" 5 1/2" DIAS. BOTH FLANGES	

SPACING OF RIVETS IN SIDE FRAMING

SIDE FRAMES TO SHELL IN HOLDS	
7 DIAS. AT 24" SPACING & AT 21" SPACING CLEAR OF PAINTING	
5 1/2" DIAS. AT PAINTING, DEEP TANKS AND PEAK TANKS	
SIDE FRAMES TO SHELL IN TWEEN DECKS - 7 DIAS. CR. TO CR.	

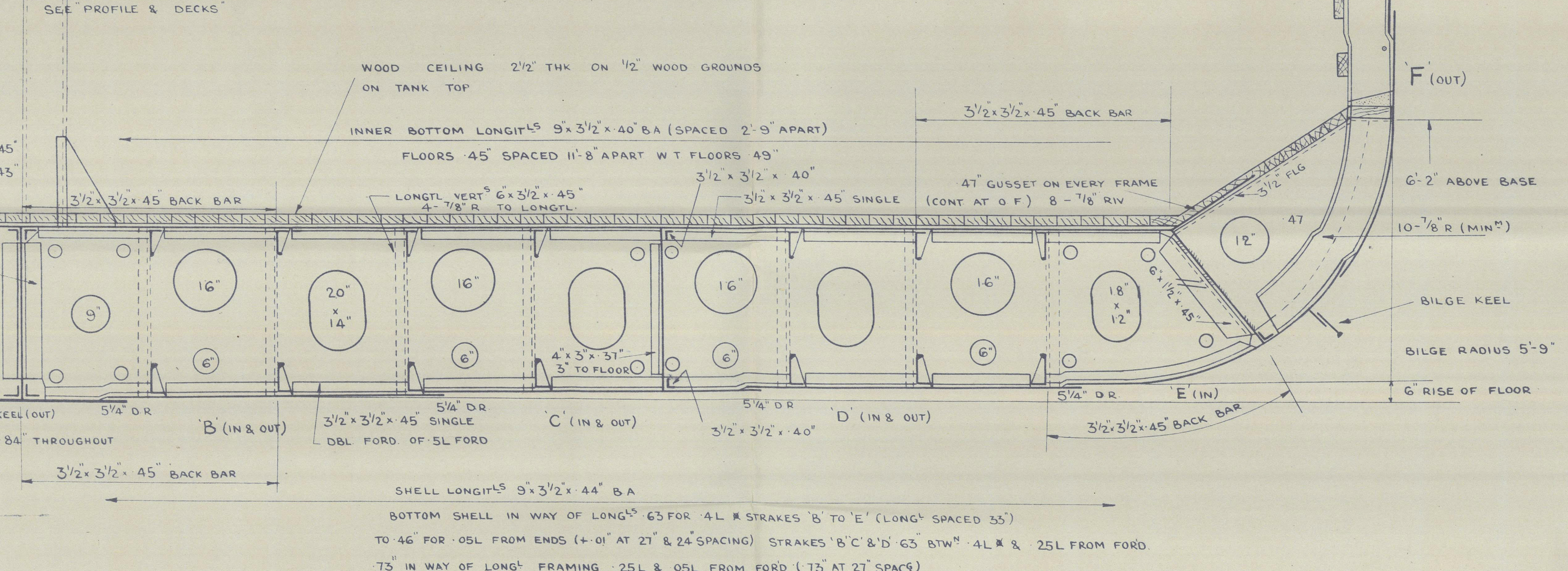


ELEVATION OF LONGITUDINALS (SPACED 2'-9" APART)
AT 3'-9" DBL BTM.

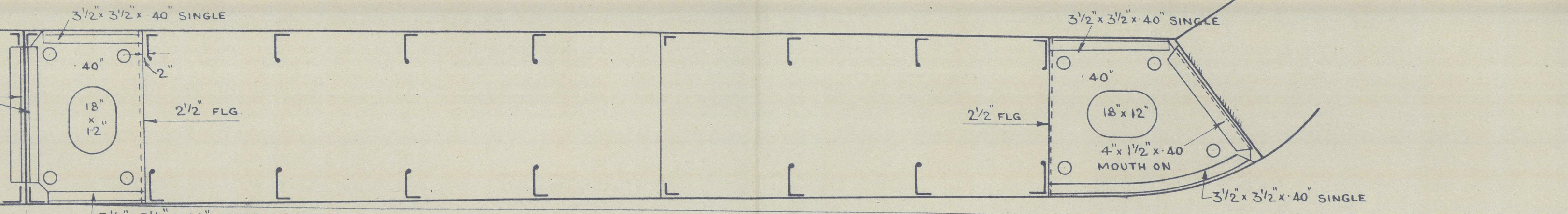


MAIN FRAMES

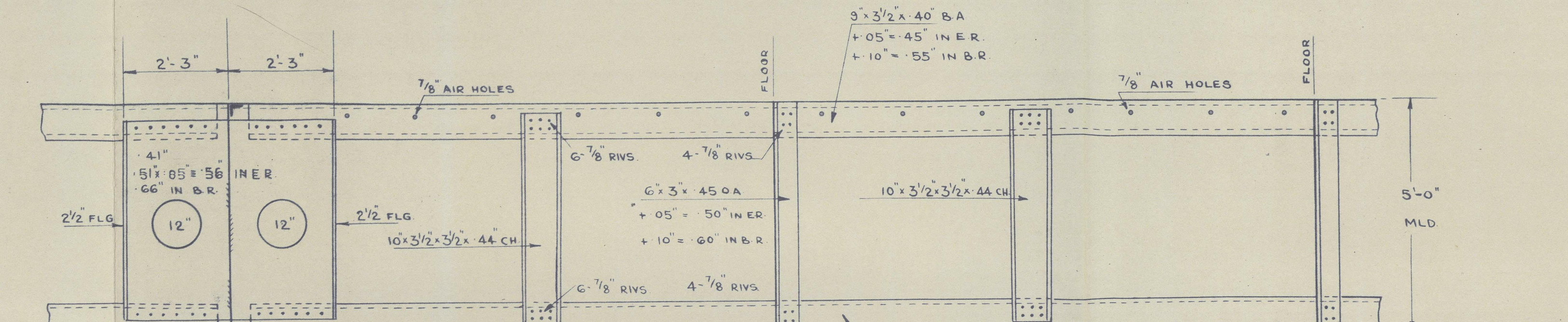
9' x 3 1/2' x 3/4" B.A. IN PEAKS
11' x 3 1/2' x 3/4" B.A. IN W. G. HOLD
12' x 3 1/2' x 3/4" B.A. IN W. G. HOLD
13' x 4' x 5/8" B.A. IN DEEP TANKS
12' x 3 1/2' x 3/4" B.A. IN W. G. HOLD
15' x 4' x 5/8" B.A. IN W. G. HOLD
5' x 3 1/2' x 3/4" B.A. INTERMEDIATE FR. IN FORD. PEAK



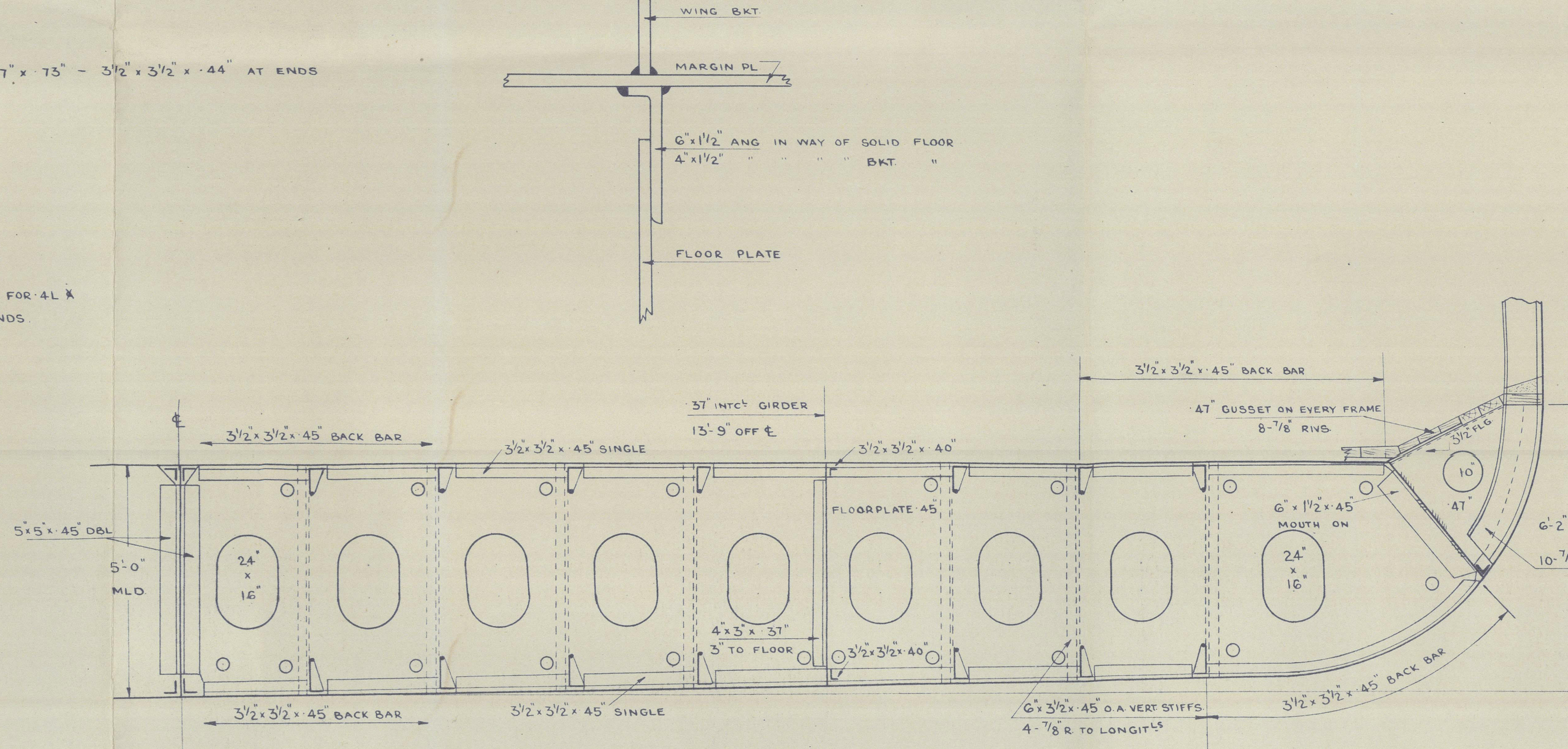
STRENGTHENING OF BOTTOM FOR D AS PER RULES.



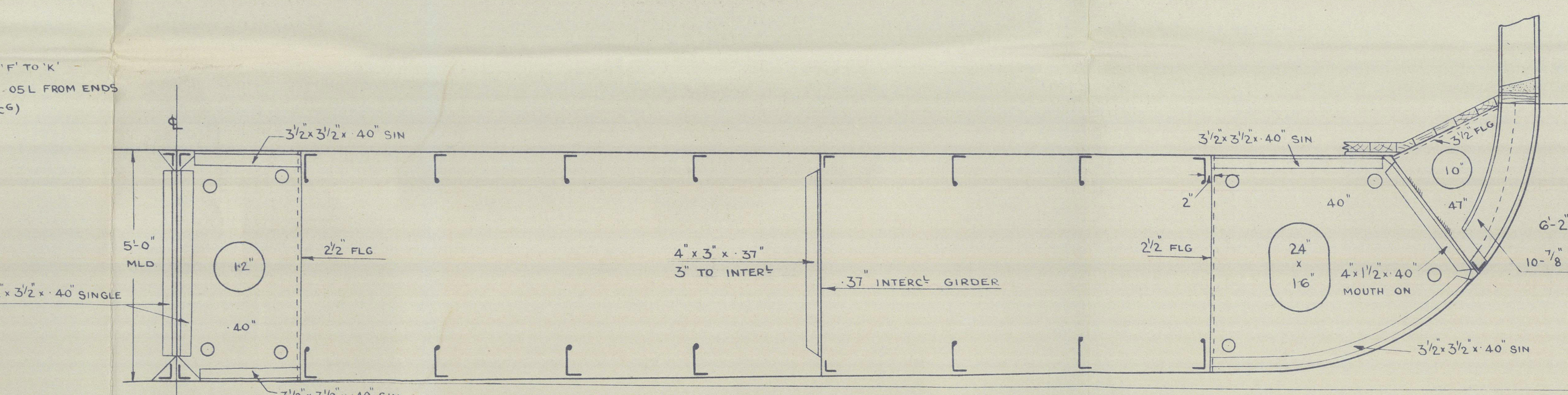
DETAIL OF BRACKET FLOORS.



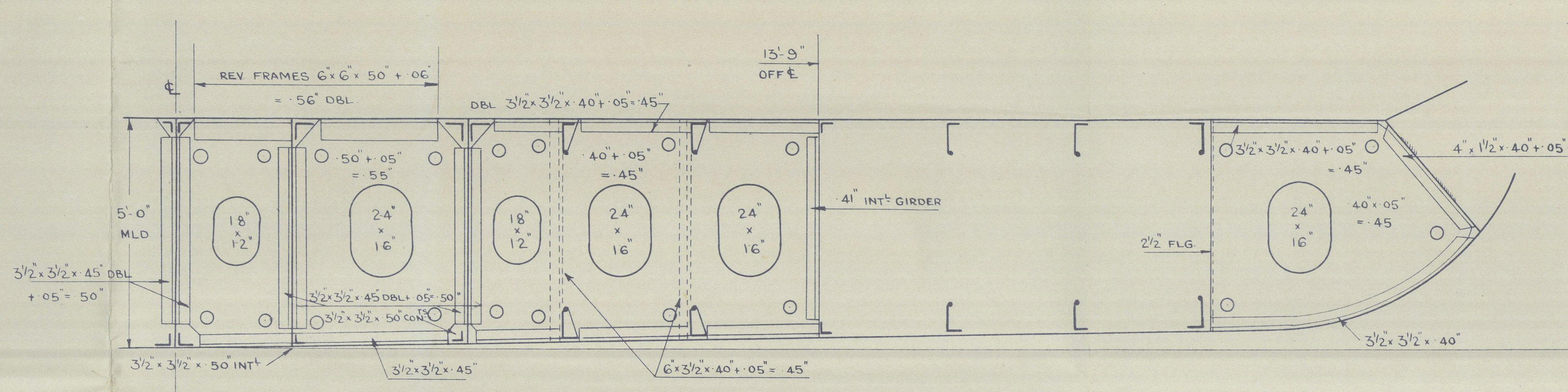
ELEVATION OF LONGITUDINALS (SPACED 2'-9" APART)
AT 5'-0" DBL BTM.



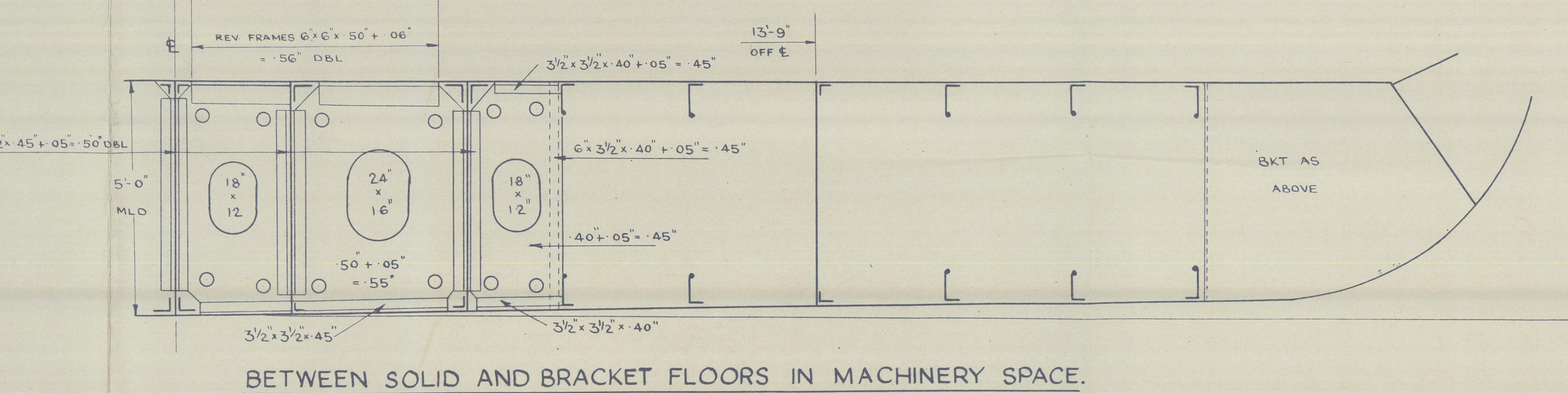
SOLID FLOORS AFT OF ENGINE ROOM.



BRACKET FLOORS AFT OF ENGINE ROOM.



BRACKET FLOORS IN MACHINERY SPACE.




BETWEEN SOLID AND BRACKET FLOORS IN MACHINERY SPACE.

MV "WOZLWICH"

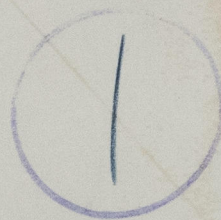
Yard n° 491

Dundee Rpt n° 9974

Wrecking Section "as built"

n/n LUBEN KARAVELOV 

RECORDS DEPT.
LONDON.



© 2021

Lloyd's Register
Foundation

013224-013231-0001