

LLOYD'S REGISTER OF SHIPPING

Index No.
(For London Office only.)

SURVEYS FOR FREEBOARD

(CONDITIONS OF ASSIGNMENT)

ENOV
M.M. 13255

Ship's Name "PILOTO PARDO"

Port of Survey Amsterdam

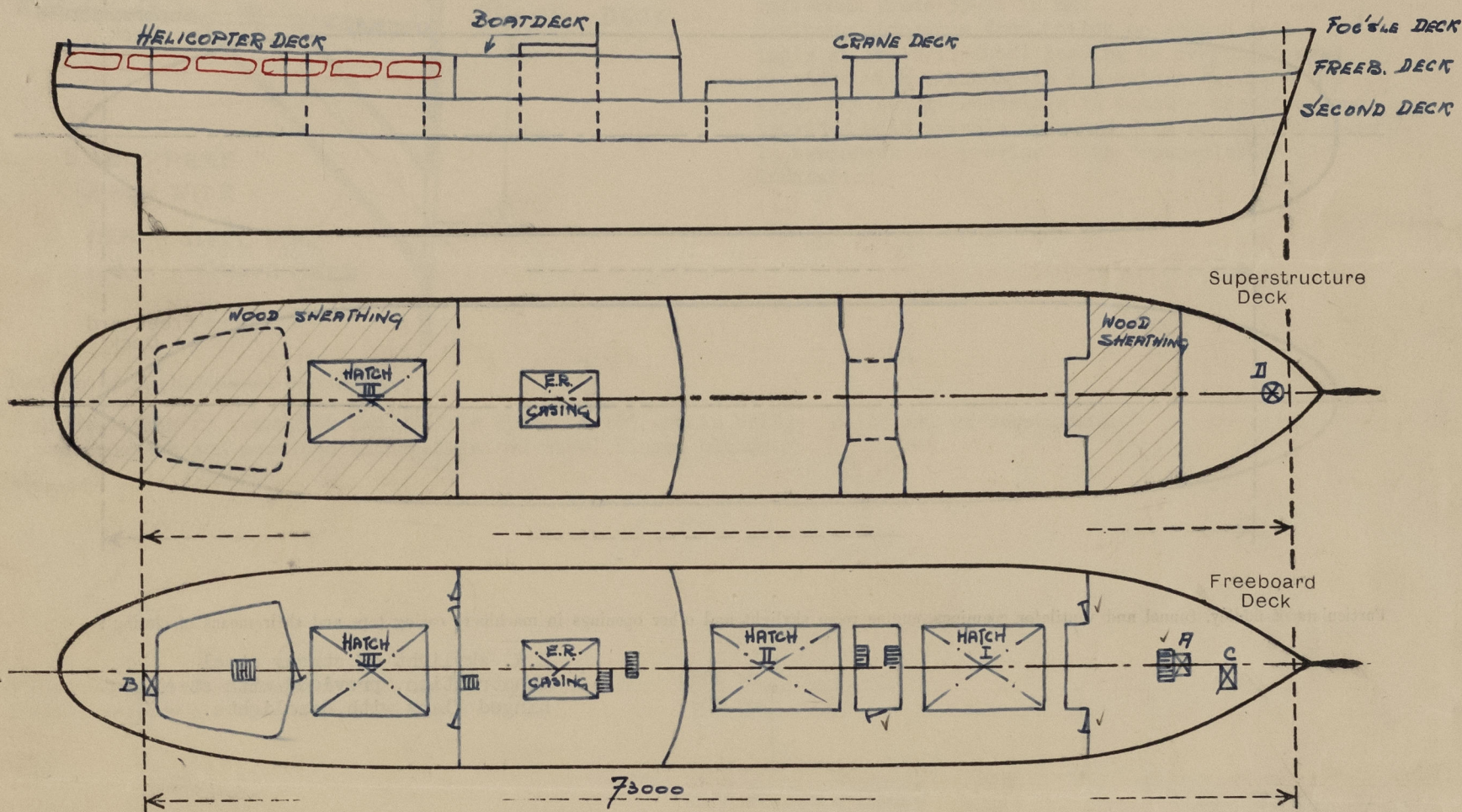
Official Number

Surveyor's Signature E.D.H.F. Fronker

Nationality and Port of Registry Chilean

Date of Survey whilst building

Disposition and dimensions of superstructures, trunks, deckhouses, machinery casings and wood sheathing to be inserted in the diagrams and tabular statement:—



Particulars of Superstructures, Trunks, Casings, Deckhouses.

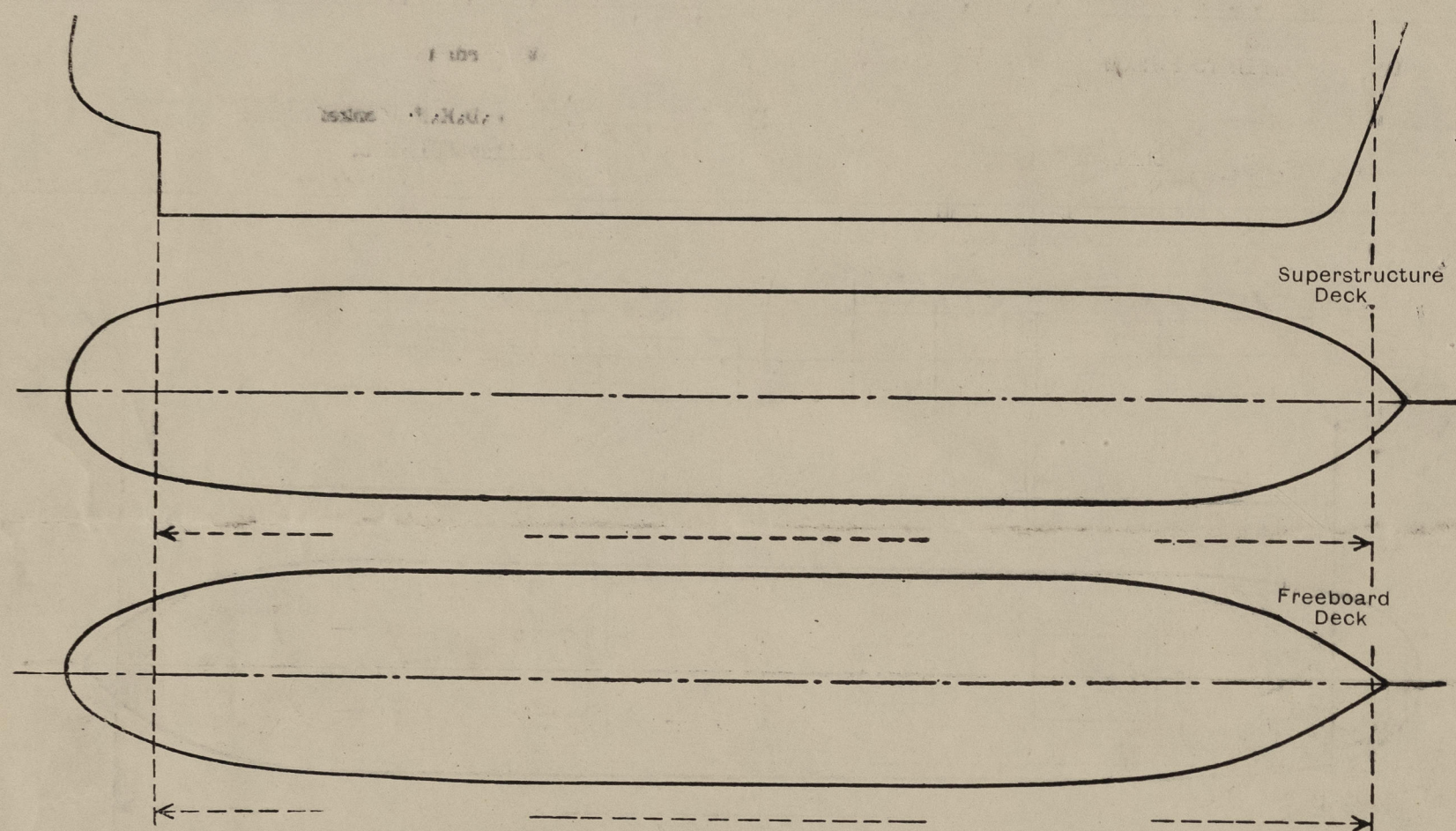
	Coaming	Plating	Stiffeners	Spacing	End Attachments of Stiffeners	Size of Openings	Height of Sills	Height, Beam to Beam
Roof of Bridge ...	-	-	-	-	-	-	-	-
Roof of Crane Deck ...	-	-	-	-	-	-	-	-
Bridge, After Bulkhead ...	-	6 1/2 mm ✓	75x65x6,5 ✓ 100x100x12 ✓	600/700 ✓	welded ✓	3x1500x640 ✓	460 mm ✓	2300 mm ✓
Bridge, Forward Bulkhead ...	-	7 1/2 mm ✓	130x75x9 ✓	760/700 ✓	welded ✓	- ✓	- ✓	2300 mm ✓
Forecastle Bulkhead ...	-	6 mm ✓	65x50x5 ✓	760 ✓	-	2x1350x640 ✓	660 mm ✓	2300 mm ✓
Roof of Forecastle ...	-	-	-	-	-	-	-	-
Roof of Forecastle ...	-	-	-	-	-	-	-	-
Roof of Forecastle ...	-	-	-	-	-	-	-	-
Roof of Forecastle ...	-	-	-	-	-	-	-	-
Roof of Forecastle ...	-	-	-	-	-	-	-	-
Machinery Casings within Superstructures not fitted with Class I Closing Appliances ...	-	6 ✓	75x65x6,5 ✓	630 ✓	welded ✓	1350x640 ✓	660 mm ✓	2300 mm ✓
Crane-deckhouse ...	Front	6 1/2 ✓	90x65x7 ✓	550 ✓	welded ✓	1500x640 ✓	460 mm ✓	± 2375 mm ✓
Deckhouse ...	Sides	6 ✓	75x65x6,5 ✓	610 ✓	welded ✓	1500x640 ✓	460 mm ✓	± 2375 mm ✓

Particulars of Closing Appliances (state if capable of being manipulated from both sides).

Roof of Bridge ...	-	-
Roof of Crane Deck ...	-	-
Bridge, After Bulkhead ...	Steel W.T.doors (capable of being operated from both sides) - 4 toggles - rubber packing ✓	
Bridge, Forward Bulkhead ...	-	-
Forecastle Bulkhead ...	Steel W.T.doors (capable of being operated from both sides) - 4 toggles - rubber packing ✓	
Roof of Forecastle ...	-	-
Roof of Forecastle ...	-	-
Roof of Forecastle ...	-	-
Machinery Casings within Superstructures not fitted with Class I Closing Appliances ...	Steel door - 4 toggles - operated by central wheel. ✓ capable of being operated from both sides ✓	
Crane-deckhouse ...	deckhouse aft W.T.Steel Door (cap. of being operated from both sides) - 4 toggles ✓	
Deckhouse ...	deckhouse forw. W.T.Steel Door (" " " " " ") - 4 toggles ✓	

PARTICULARS OF PROTECTION TO OPENINGS, ETC.

The following diagrams should be used to indicate the positions of cargo and coaling hatchways, gangway, cargo and coaling ports, side scuttles, scuppers, ventilators, companionways, etc., which would affect the seaworthiness of the ship :-



Particulars of fiddle, funnel and ventilator coamings, engine room skylight and other openings in machinery casing tops and their means of closing :-

E.R. skylight of strong steel construction, provided with steel hinged flaps with deadlights.

Particulars of Companionways :- None

Particulars of Companionways :-

(including those incorporated in deckhouses and masthouses)

All stairways incorporated in superstructure and deckhouses of substantial construction and provided with steel hinged W.T.doors capable of being operated from both sides.

Particulars of Ventilators in exposed positions on freeboard and superstructure decks :-

Ventilator on Frame	Deck	Diam. ϕ	Height	Thickness of Mat.
15/16 P.S. + S.B.	Freeboard	400 mm ✓	920 mm ✓	8½ mm
34/35 P.S. + S.B.	Superstruct.	300 mm ✓	760 mm ✓	8½ mm ✓
61/62 P.S. + S.B.	Freeboard	400 mm ✓	920 mm ✓	8½ mm ✓
78/79 P.S. + S.B.	Freeboard	300x250 mm ✓	920 mm ✓ 1650	8½ mm ✓ 6 mm
98 on	Forecastle	400 mm ✓	1300 mm ✓	9½ mm ✓

Ventilators with height in excess of 910 mm all well stayed.

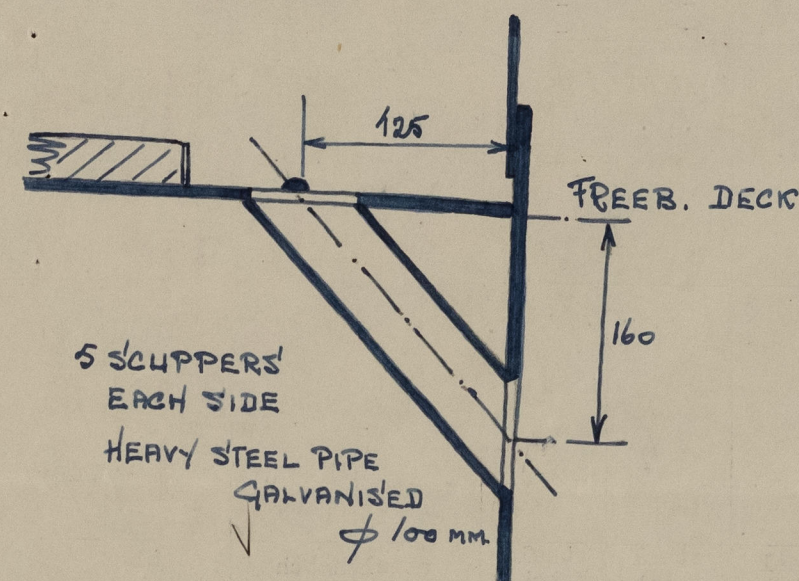
Particulars of Air Pipes in exposed positions on freeboard, ~~deadwood~~, or superstructure decks :-

Airpipes on foc'sle deck and freeboarddeck 915 mm above deck ✓
 " on helicopterdeck 760 mm above deck. ✓
 " on watertanks provided with wooden plugs (chain attachment) and canvas covers ✓
 " on oiltanks " " steel caps with bronze gauze wiring. ✓

Particulars of Gangway Cargo and Coaling Ports :-

None

Particulars of Scuppers and Sanitary Discharge Pipes :-



Sanitary discharges of toilets leading from spaces above freeboard deck to overboard provided with automatic non return valves. ✓
 Sanitary discharges from washbasins, showers etc. from spaces above freeboarddeck and second deck leading to waste watertanks in hold I,II,III and cofferdam frame 35-36 in ER. ✓
 Sanitary discharge from toilet on second deck (only at fr.16/17 stbd) leading to overboard provided with 2 automatic non return valves - the upper one being accessible in place - the lower one provided with spindle operated from accessible space in tweendeck and provided with "open-closed" indication. ✓

Particulars of Side Scuttles and Deadlights :-

Sidescuttles in tweendeck and foc'sle space ϕ 10" and in bridge ϕ 14" all of substantial construction and provided with galvanised steel hinged blinds. ✓

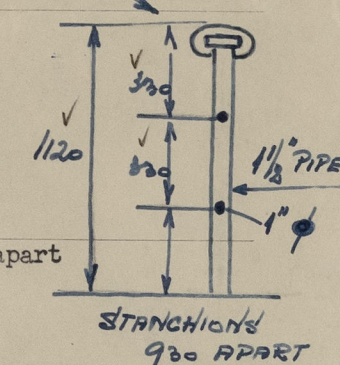
Vertical distance of Sill of lowest Side Scuttle above top of keel 6660 mm ✓
 Distance from amidships to centre of lowest Side Scuttle 600 mm ✓

Particulars of Guard Rails and Bulwarks :-

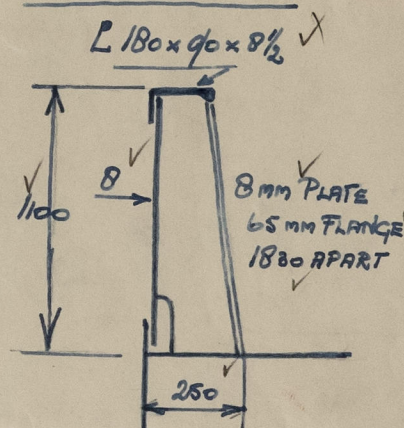
On foc'sle deck forw. fr.110 bulwark height 1120, plating 7 mm, rail \angle 180x90x8½, stanchions 8 mm plate with 65 mm flange 1500 mm apart ✓
 On freeboard deck bulwark (see sketch)
 On superstructure deck removable open railing. Fr. 48-60 bulwark aluminium 6½ mm/- stanchions 6 mm alum. fl. 50 2400 mm apart
 Particulars of Gangways, Lifelines, etc. :-

Fittings made for attachment of lifeline. ✓

ON FOC'SLE DECK
FR. 100 - 110



ON FREEB. DECK



Particulars of Freeing Arrangements.

	Length of Bulwark	Height of Bulwark	Size of Freeing Ports	Number each side	Area each side	Rule area each side
After Well ...	20.13 m 23.7 m	1,10 m	1500 x 200 mm	4	1,20 m²	1,221 m²
Forward Well ...	24.7 m 25.17 m	1,10 m	1500 x 200 mm	6	1,80 m²	1,528 m²

State position of each freeing port ... { After Well :- Fr.0;Fr.6;Fr.12/13; Fr.22/23 ✓
 (F. and A. position and height above deck edge) { Forward Well :- Fr.65/66; Fr.71/72;Fr.77/78;Fr.83/84;Fr.89/90;Fr.95/96 ✓

State whether the freeing ports are fitted with shutters, bars, or rails, and give particulars of such :- in each freeing port 3 vertic. 3/4" ϕ ✓

Additional area where sheer is less than standard. -

PARTICULARS OF PROTECTION TO OPENINGS, ETC.

HATCHWAYS ON FREEBOARD AND SUPERSTRUCTURE DECKS.										
FREEBOARD DECK										
FOC'SLE DECK SUP. DECK										
Description of Hatchway	I	II	III	A hatch on chainl.	B hatch on steer. eng	C hatch on boatsw. st.	D hatch on boatswains store	I.D.	III	
Dimensions of Hatchway	7,30x3,40	7,90x3,80	8,24x3,80	800 x 370	1215 x 740	0,80x0,50	ø 800		8,24x3,80	
COAMINGS	Height above Deck	750 mm	750 mm	230 mm	610 mm	230 mm	610 mm			
	Thickness Sides	11 mm	11 mm	7 1/2 mm	7 mm	7 mm	6 1/2 mm			
	Thickness Ends	11 mm	11 mm	7 1/2 mm	7 mm	7 mm	6 1/2 mm			
	Stiffeners ...	300x114	300x114	300x114	300x114	300x114	300x114			
HATCH BEAMS	Brackets, Stays	300x8	300x8	300x8	300x8	300x8	300x8			
	Number	4	4	4	4	4	4			
	Spacing	3000 mm	3000 mm	3000 mm	3000 mm	3000 mm	3000 mm			
	Scantling and Sketch	100x10 mm	100x10 mm	100x10 mm	100x10 mm	100x10 mm	100x10 mm			
FORE AND AFTERS	Bearing Surface	steel	steel	steel	steel	steel	steel			
	Number	4	4	4	4	4	4			
	Spacing	3000 mm	3000 mm	3000 mm	3000 mm	3000 mm	3000 mm			
	Unsupported Lengths	3000 mm	3000 mm	3000 mm	3000 mm	3000 mm	3000 mm			
HATCH COVERS	Scantling* and Sketch	100x10 mm	100x10 mm	100x10 mm	100x10 mm	100x10 mm	100x10 mm			
	Bearing Surface	steel	steel	steel	steel	steel	steel			
	Material	steel	steel	steel	steel	steel	steel			
	Thickness	7 mm	7 mm	7 mm	7 mm	7 mm	7 mm			
Spacing of Toggles	transverse	900 mm	900 mm	-	-	-	-			
Number of Tarpaulins	longitudinal	900 mm	860-990 mm	-	-	-	-			
<p>*Are wood fore and afters steel shod at all bearing surfaces? -</p> <p>Are battens and wedges efficient and in good condition? yes - steel</p> <p>Are tarpaulins in good condition and in accordance with rule requirements? none</p> <p>Are lashings provided in accordance with rule requirements? -</p> <p>Are wood covers fitted with galvanised end bands? -</p>										

Particulars of any special features :— (Timber Deck-cargo Fittings, Skylights, Sewage Systems, Ash Ejectors, Rubbish Shoots, etc.)



© 2021

Lloyd's Register Foundation