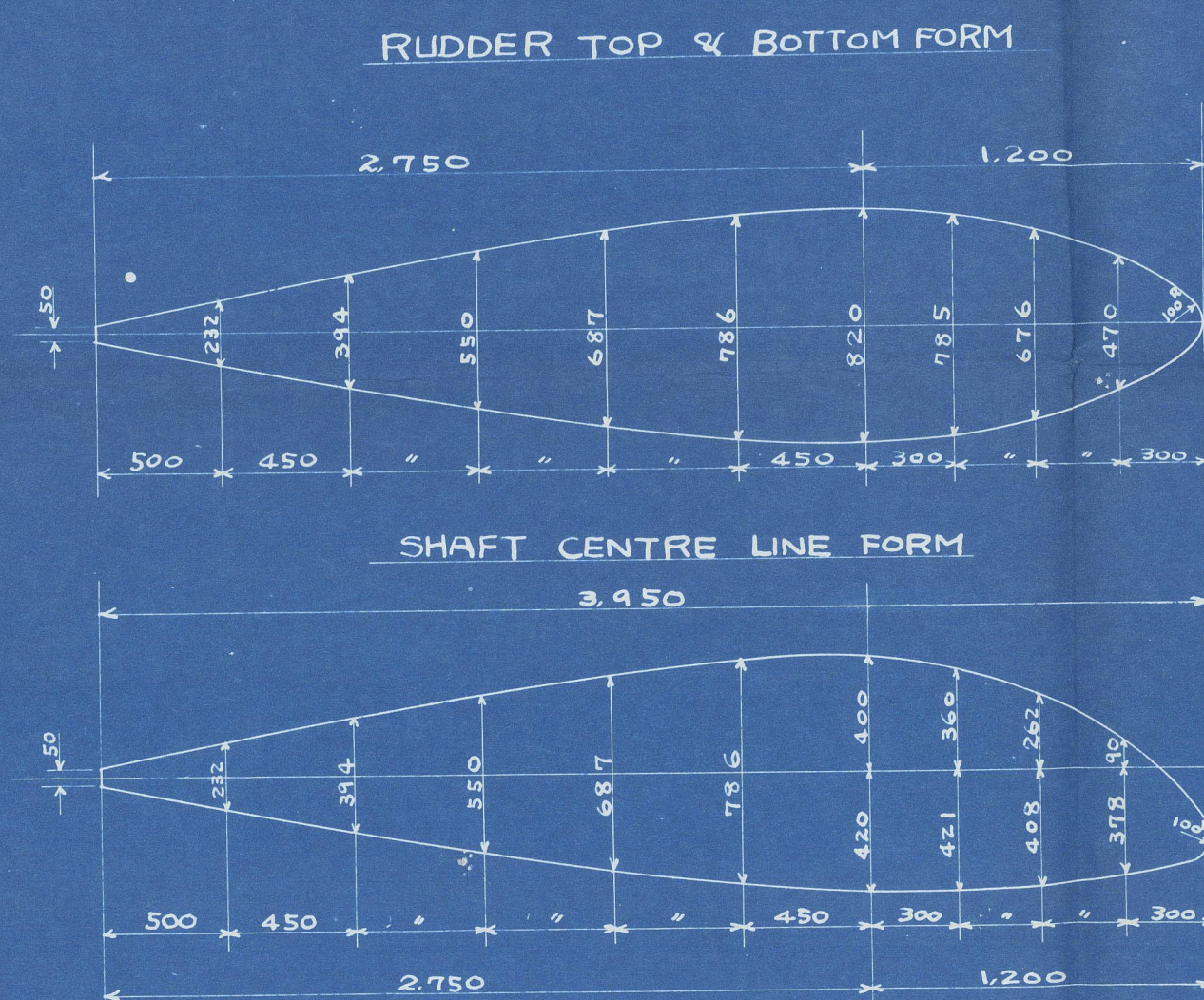


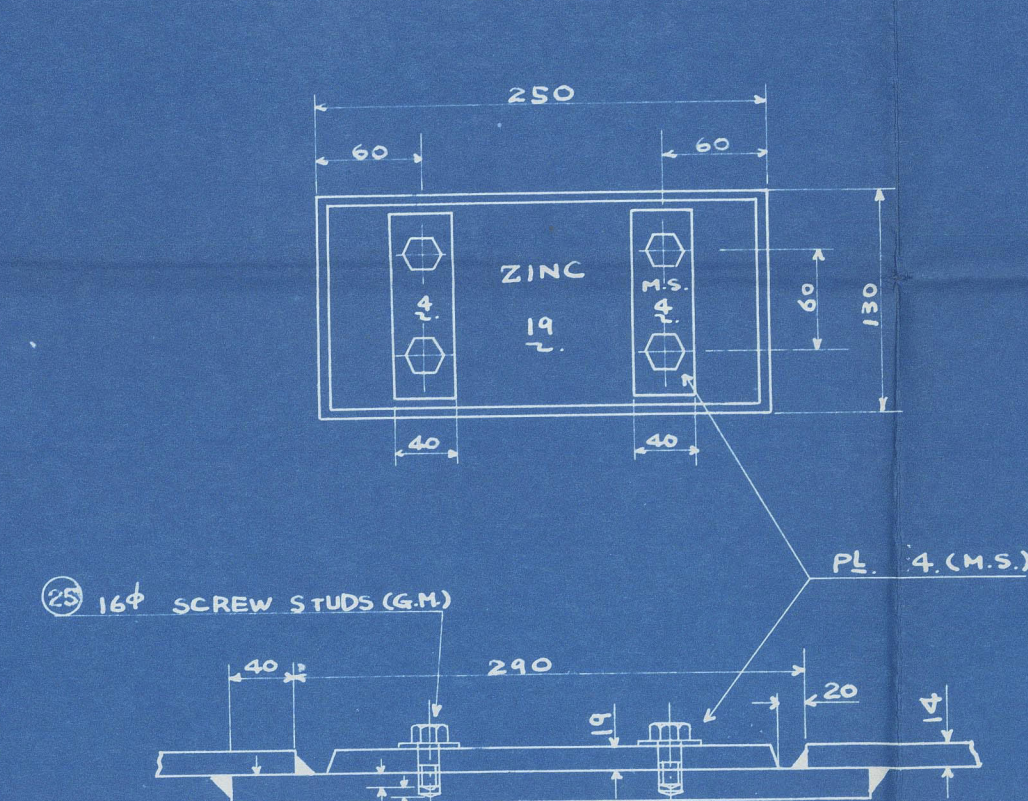
RUDDER

SCALE $\frac{1}{25}$, $\frac{1}{15}$, $\frac{1}{10}$, $\frac{1}{5}$, $\frac{1}{25}$

SECTIONAL FORM OF RUDDER
SHOWING OUTSIDE OF RUDDER PLATE

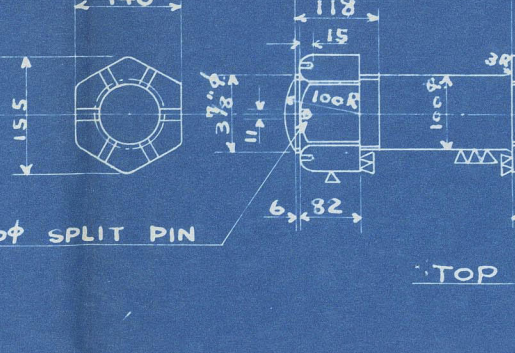


DETAIL OF ZINC PLATE

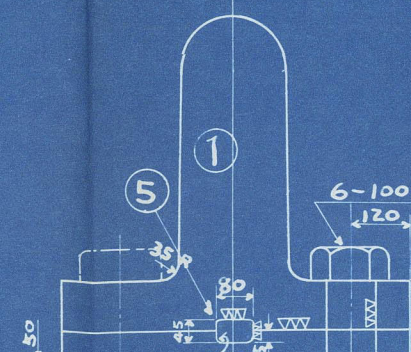


EYE BOLT
WHITWORTH THREAD
No. 2

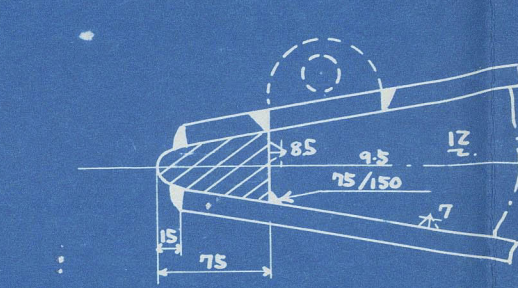
100 RIMMER BOLT DETAIL
(WHITWORTH THREAD)



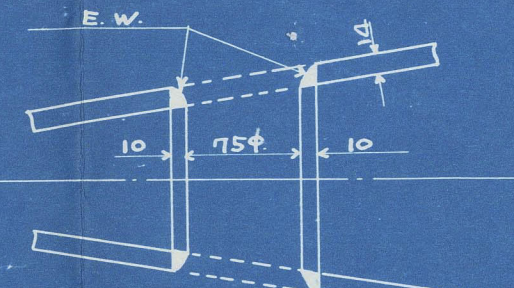
SECTION
LOOKING AFT



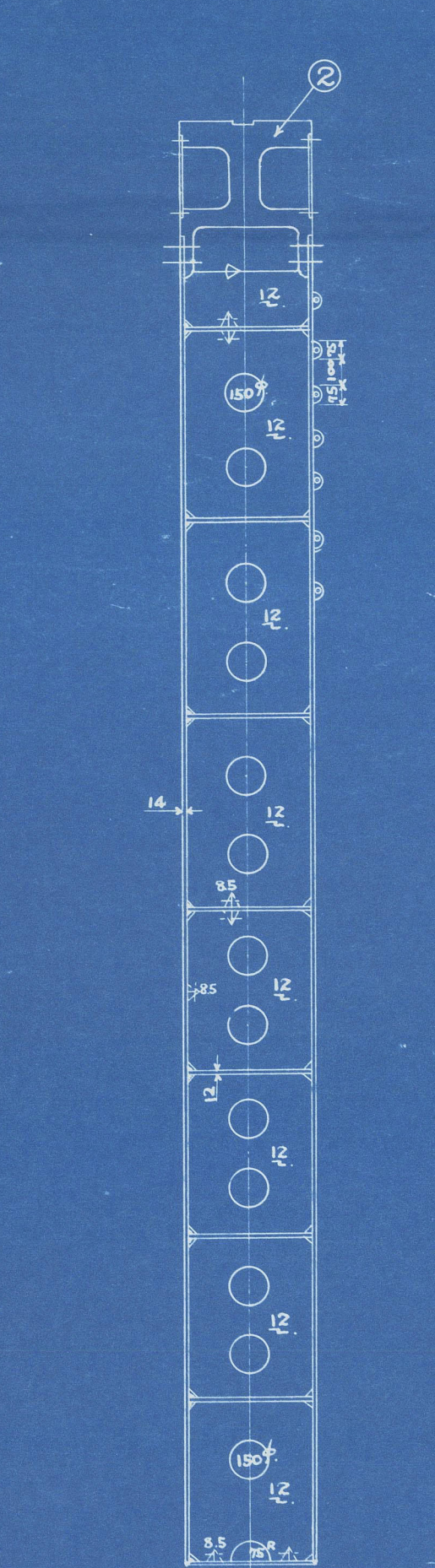
DETAIL OF EDGE PIECE



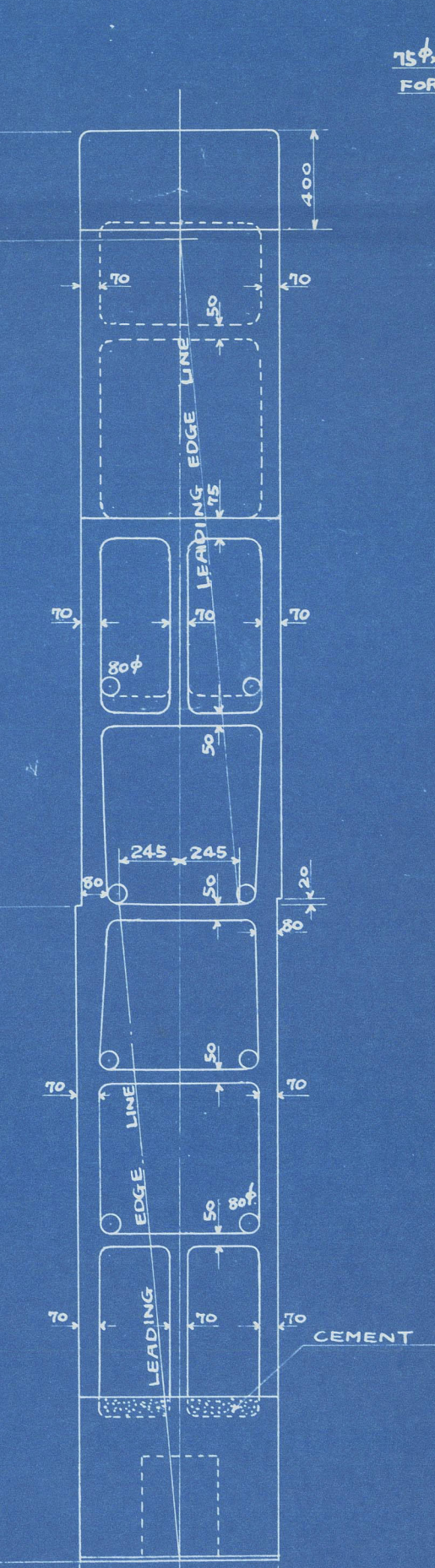
LIFTING HOLE



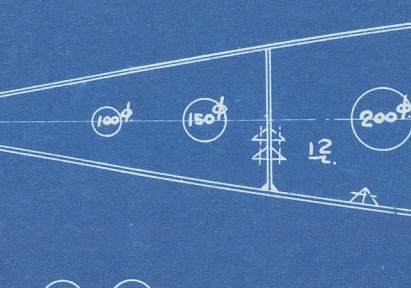
INTERCOSTAL VERTICAL WEB
LOOKING AFT



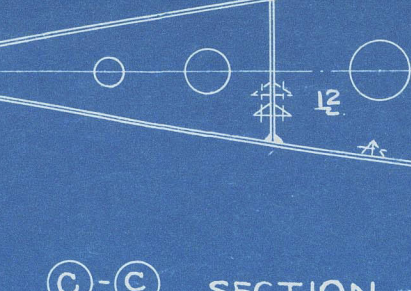
MAIN PIECE
LOOKING AFT



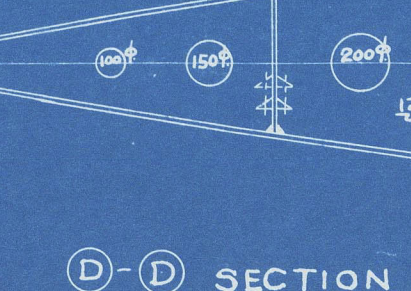
A-A SECTION



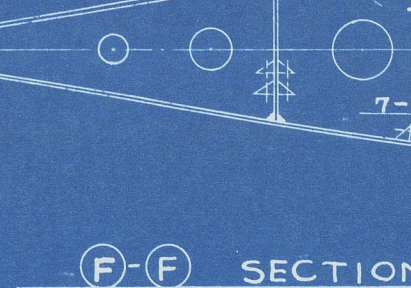
B-B SECTION



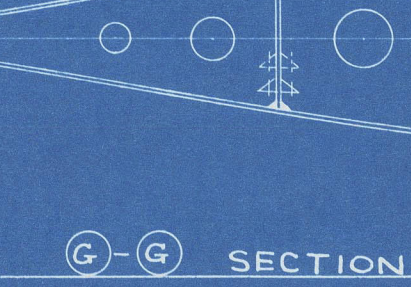
C-C SECTION



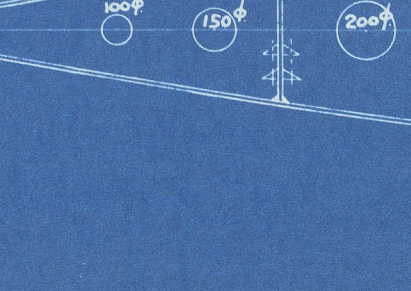
D-D SECTION



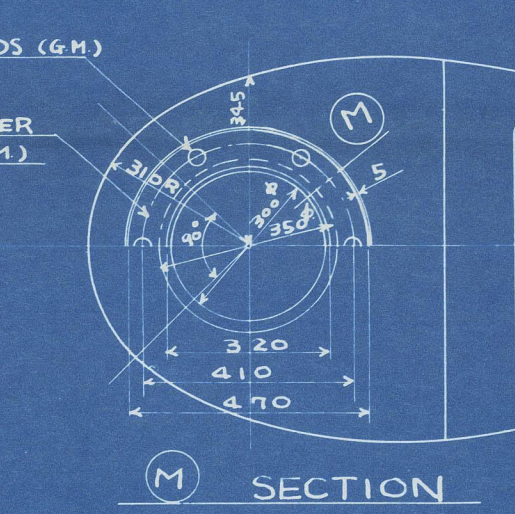
F-F SECTION



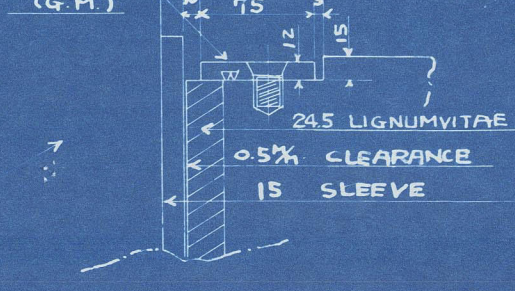
G-G SECTION



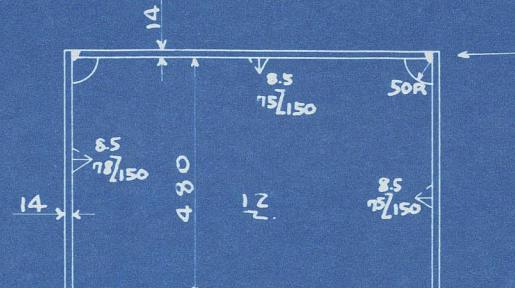
GUIDEON TOP PLAN



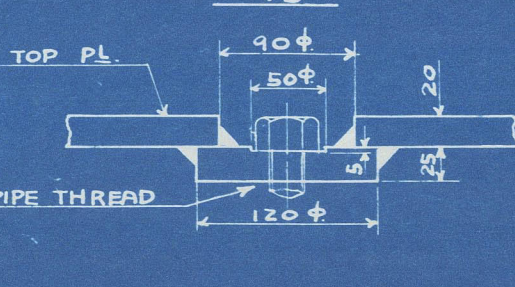
SECTION
V/S



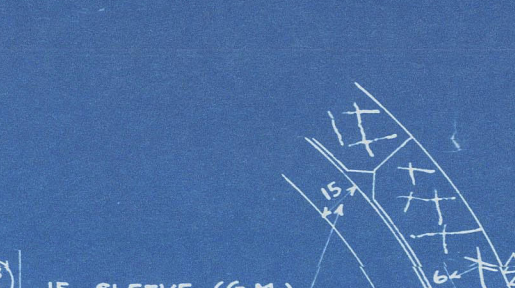
WEB PLATE
LOOKING AFT



TOP PLUG DETAIL



LIGNUMVITAE DETAIL



BOTTOM PINTLE



STERN FRAME



PRINCIPAL DIMENSIONS & PARTICULARS

LENGTH B. P.	162'00 (53.41)
BREADTH (MOULDED)	21'40 (70.2)
DEPTH (")	11'80 (39.7)
DRAUGHT (")	9'10 (28.4)
MAX. SEA SPEED	15.0
L x d	1438" (15920)
RUDDER AREA A	2139 (230.2)
A x d	163.4
AREA RATIO BETWEEN FORE AND AFTER PARTS OF RUDDER STOCK	1/2.63
CENTRE OF PRESSURE AFTERWARD FROM RUDDER STOCK	0.376 (12.34)
THE NUMERALS A x D FOR LLOYD'S RULE FOR TOTAL RUDDER AREA	637
ABOVE THE CENTRE LINE OF THE PINTLE	760 x 80 = 608

ITEM	MATERIAL	NO	WEIGHT (REMARKS)
1	RUDDER STOCK	FORGED STEEL	1 7.50
2	MAIN PIECE OF RUDDER	CAST STEEL	1 10.65
3	EYE BOLT	FORGED STEEL	1
4	COUPLING BOLTS WITH NUTS & PIN	"	6
5	COUPLING KEY	"	1
6	RUDDER PLATE WITH STIFFENERS	MILD STEEL	1 5.90
7	TUBES FOR LIFTING RUDDER	"	2
8	GUIDE BEARING SLEEVE	GUN METAL	1
9	TOP PINTLE WITH NUT & PIN	FORGED STEEL	1
10	BOTTOM PINTLE	"	1
11	"	"	1
12	"	"	1
13	TOP PINTLE SLEEVE	GUN METAL	1
14	BOTTOM " "	"	1
15	TOP BEARING BUSH	LIGNUMVITAE	1
16	BOTTOM " "	"	1
17	TOP BOTTOM BEARING BUSH KEY	FORGED STEEL	1
18	LIGNUMVITAE STOPPER AT TOP B.	MILD STEEL	1
19	"	"	1
20	"	"	1
21	"	"	1
22	EDGE PIECE OF RUDDER	FORGED STEEL	1 0.12
23	TOP & BOTTOM PLUGS	GUN METAL	3
24	PROTECTION ZINC PLATE	ZINC	6
25	"	"	24
26	COVER PLATE OF RUDDER COUPLING	MILD STEEL	2
27	"	"	60
28	COVER PLATE OF SHOE PIECE	MILD STEEL	1
29	"	"	30

DEGREE OF FINISHING	
✓	SMOOTH SURFACE
▽	ROUGH FINISH
▽▽	MEDIUM FINISH
▽▽▽	FINE FINISH

This plan is in accordance
with the approved plan.

SN 467

TAIEI MARU

RUDDER

DRAWING NO H-6

SN 467

太榮丸

舵


完成圖

尺度 $\frac{1}{25}$, $\frac{1}{15}$.

中 西 口

H-6

Lloyd's Register
Foundation

'TAIEI MARU' 

Rudder.

RECORDS DEPT:
LONDON

5



© 2021

Lloyd's Register
Foundation

013284-013292-0173