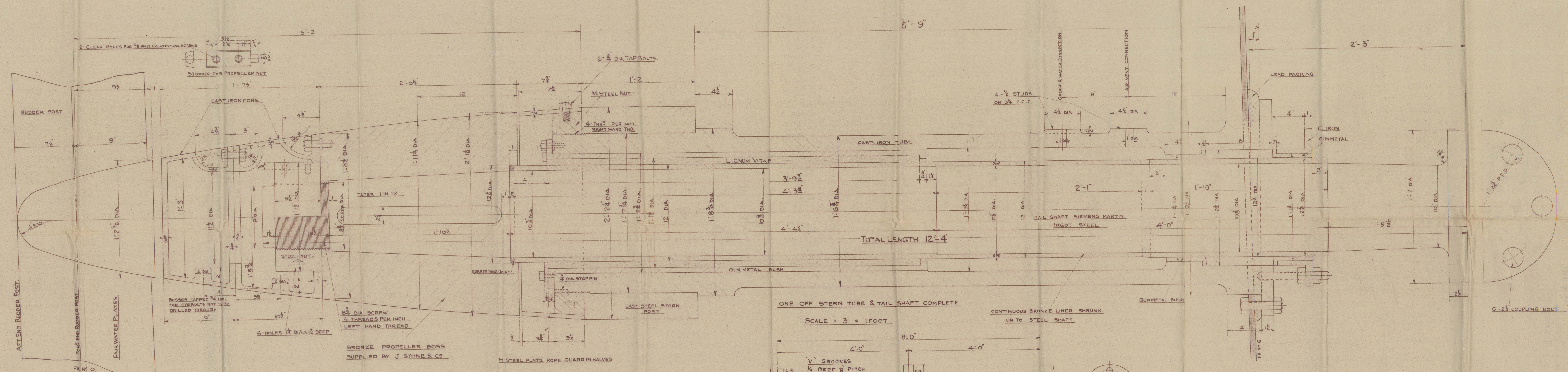
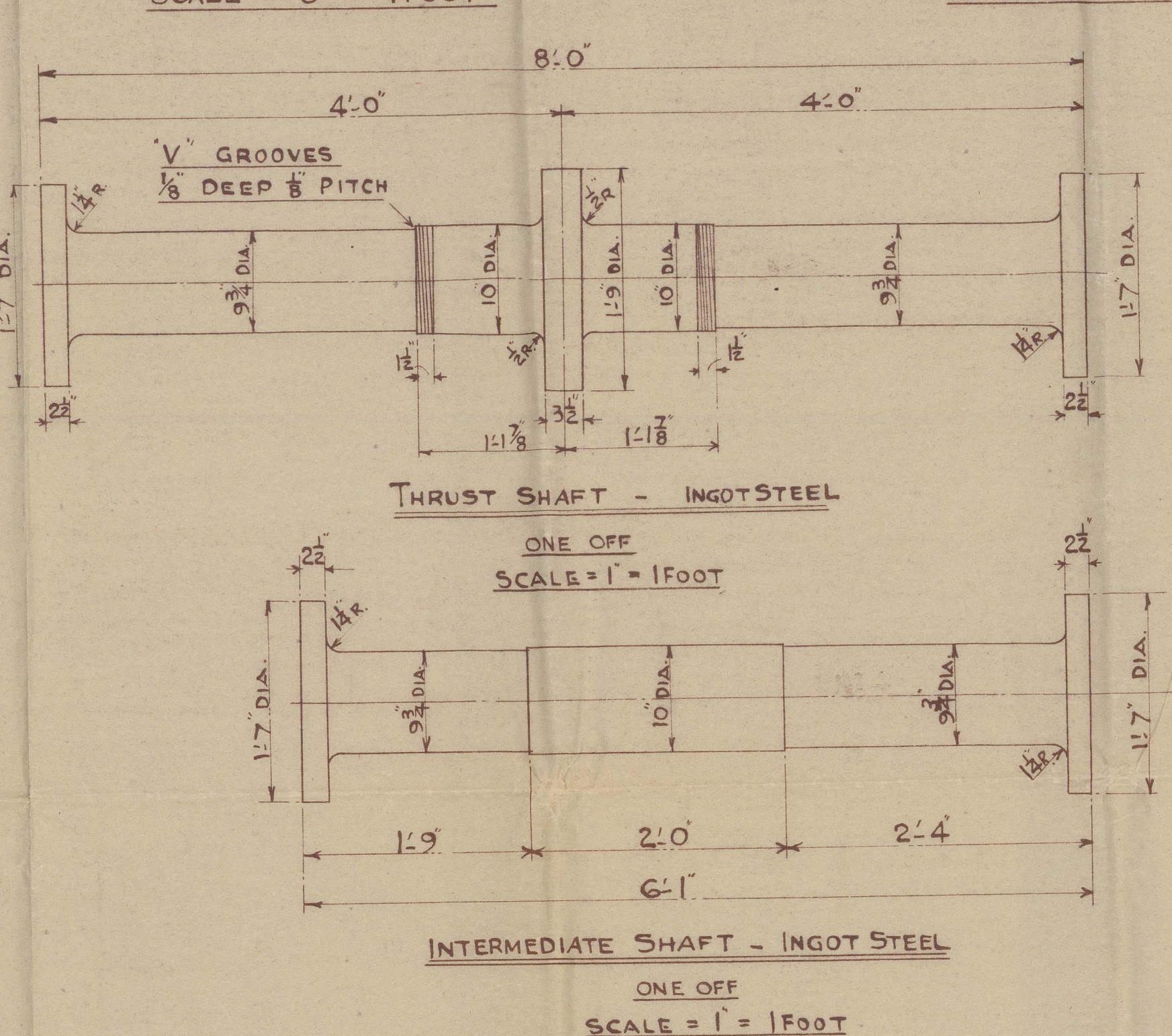


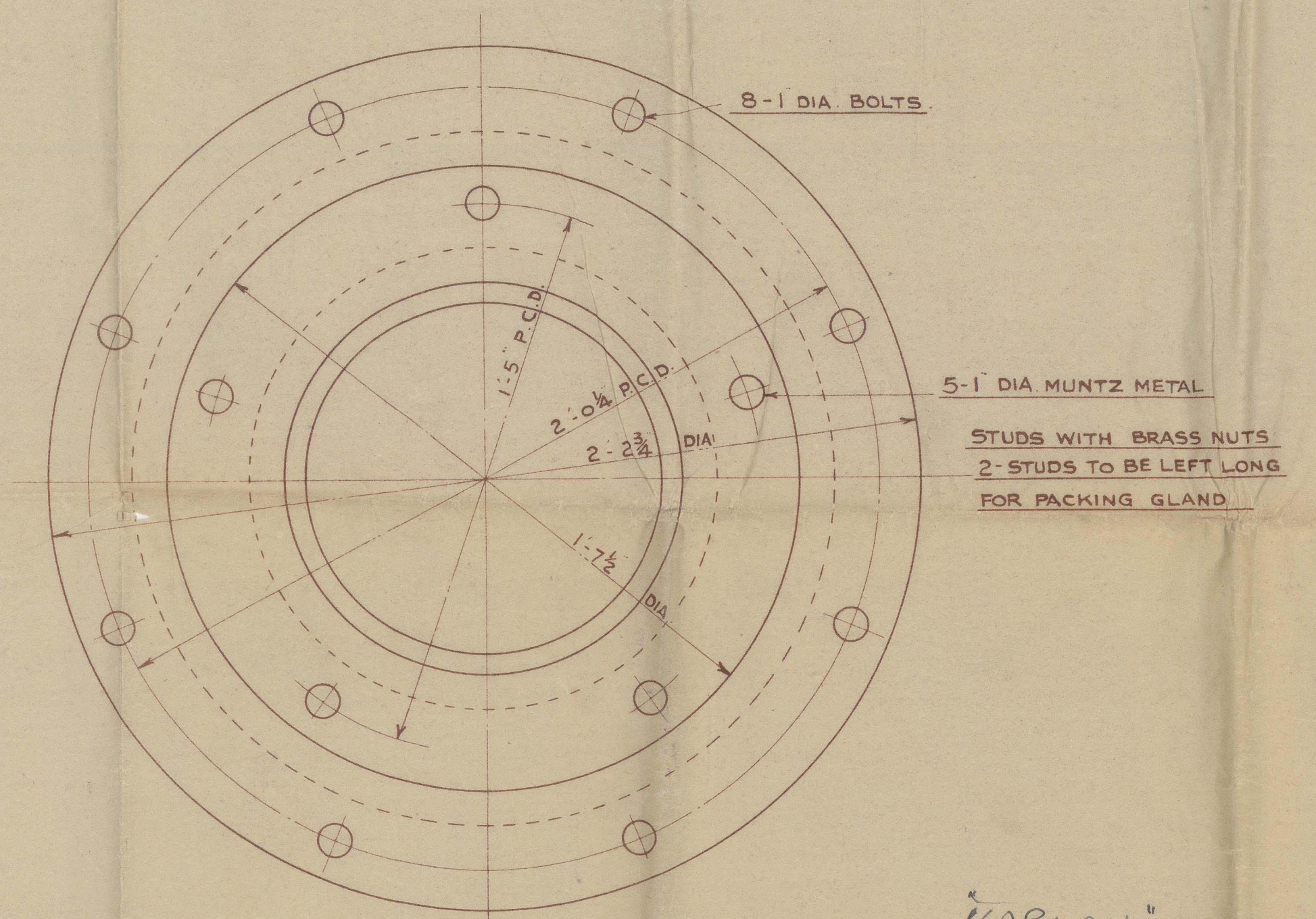
ARRANGEMENT OF SHAFTING
SCALE = 1/2" = 1 FOOT



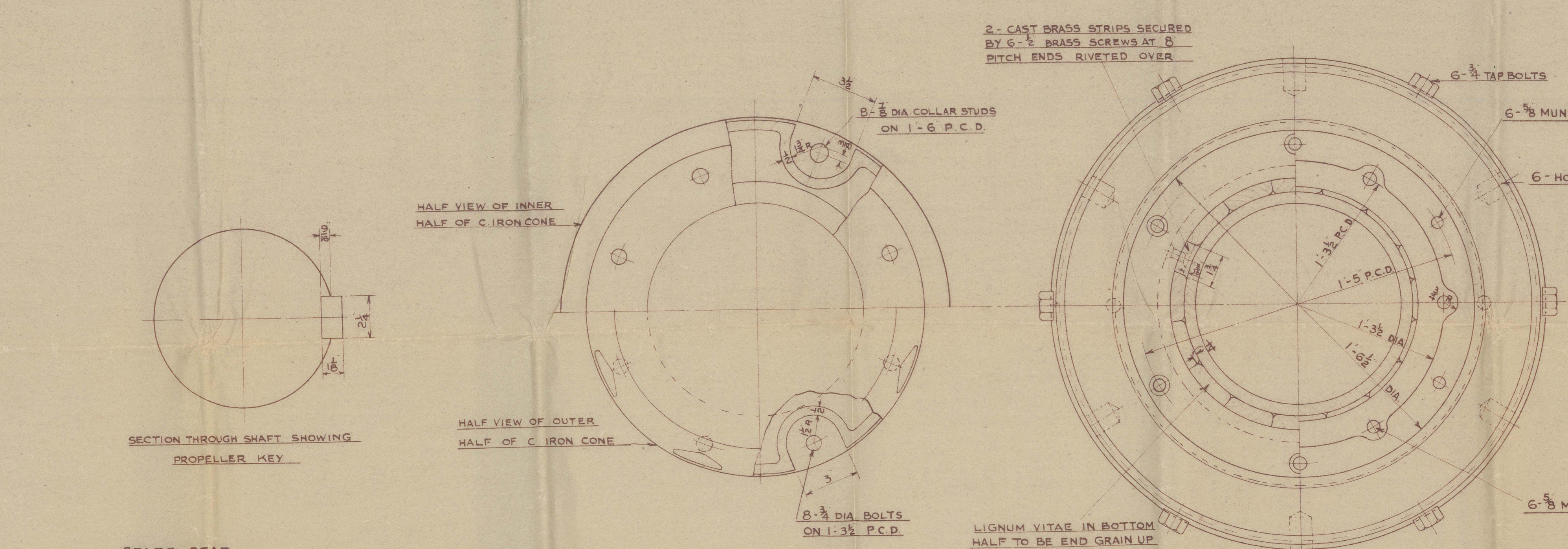
ONE OFF STERN TUBE & TAIL SHAFT COMPLETE
SCALE = 3" = 1 FOOT



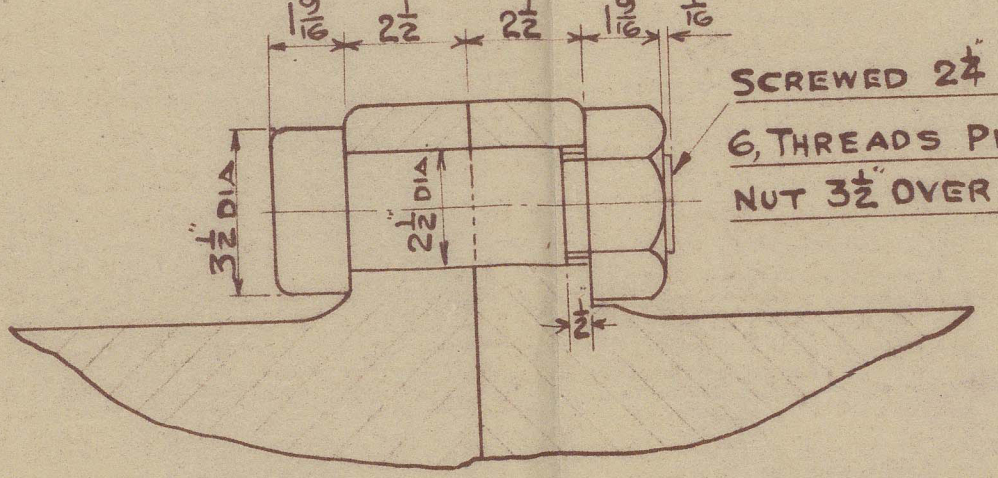
INTERMEDIATE SHAFT - INGOT STEEL
ONE OFF
SCALE = 1" = 1 FOOT



VIEW LOOKING AFT ON STERN TUBE



VIEW LOOKING FORWARD ON STERN TUBE



PROPELLER NUT SPANNER
1, OFF THIS
SCALE = 1" = 1 FOOT

SPARE GEAR
122
JOB NO. ENG
ONE OFF - TAIL SHAFT COMPLETE WITH LINER & NUT
6 OFF - COUPLING BOLTS

PARTICULARS OF MAIN ENGINE

STEAM RECIPROCATING ENGINE
BOILER PRESSURE = 235 LBS. D
CYLINDER DIA 1/2 H.P. - 16 1/2, M.P. = 20 1/2, L.P. 4-8
STROKE = 33
3 CRANKS AT 120°
1200 I.H.P. AT 110 R.P.M. ON TRIALS
1050 I.H.P. AT 105 R.P.M. IN SERVICE
TAIL SHAFT FITTED WITH CONTINUOUS LINER
THRUST INTER & TAIL SHAFTS INGOT STEEL
SHAFTING TO LLOYD'S REQUIREMENTS
ENGINE BUILT BY THE NORTH EASTERN MARINE ENGINEERING CO. LTD.
PROPELLER DIA. 11'-10"

TAIL SHAFT & NUT	JOB NO. 157
STERN TUBE	JOB NO. 158
INTER. SHAFT	JOB NO. 155
THRUST SHAFT	JOB NO. 153

COUPLINGS THUS
ALL COUPLING BOLTS TO BE
DRIVEN IN FROM AFT SIDE
18 OFF WORKING
6 OFF SPARES
SCALE = 3" = 1 FOOT

SHIP NO 819 ENG NO 536
STERN TUBE, TAIL, INTERMEDIATE & THRUST SHAFTS
SCALE = 1/2" = 1 FOOT

APPROVED
H. K. & W. DOCK CO. LTD.
17 APR 1938

H. K. & W. DOCK CO. LTD.
17 APR 1938