

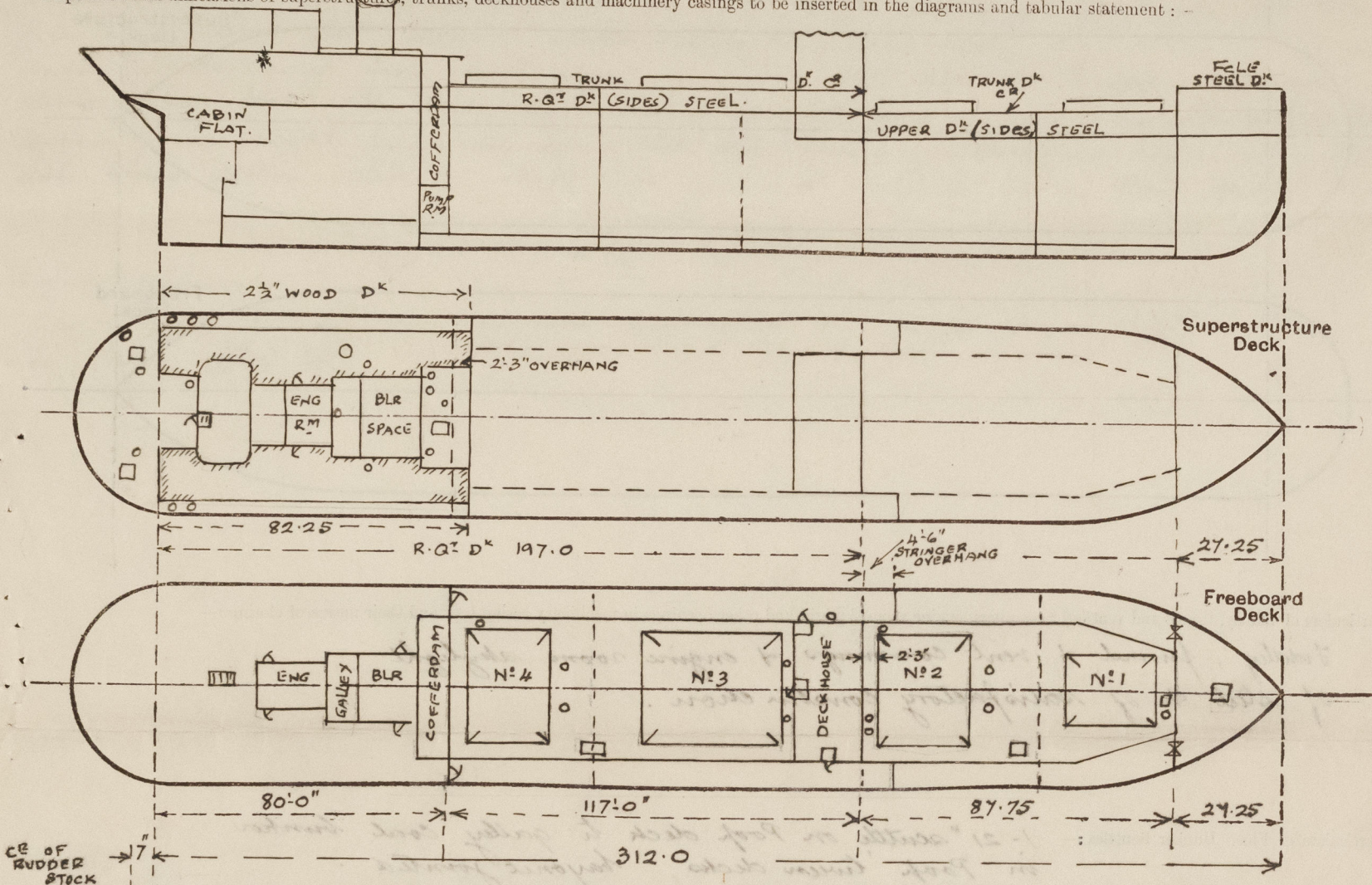
Lloyd's Register of Shipping.
SURVEYS FOR FREEBOARD.
(CONDITIONS OF ASSIGNMENT.)

Index No. 37852
(For London Office only).

No. 18615

Ship's Name "EMPIRE JAMAICA"
Official Number 180079
Nationality and Port of Registry British West Hartlepool.
Port of Survey West Hartlepool.
Surveyor's Signature W. J. Craig
Date of Survey Jan. 1945

Disposition and dimensions of superstructure, trunks, deckhouses and machinery casings to be inserted in the diagrams and tabular statement :-



Particulars of Superstructures, Trunks, Casings, Deckhouses.

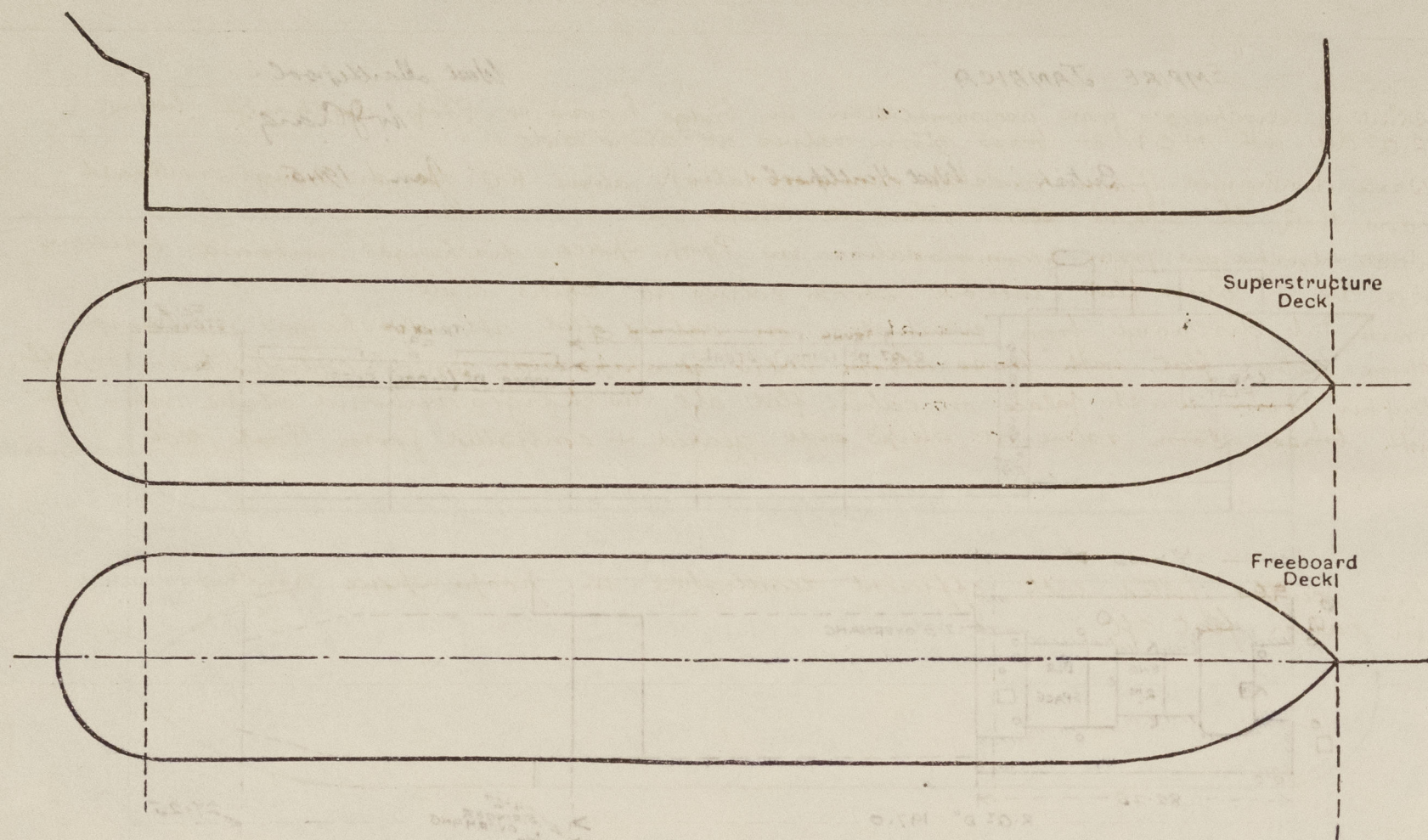
	Coaming	Plating	Stiffeners	Spacing	End Attachments of Stiffeners	Size of Openings	Height of Sills	Height of Casings	
Poop Bulkhead	-	.354 .42 .30	8 x 3 x 387 11 x 3 1/2 x 428 9/12 x 3 1/2 x 563	36" 28 1/2" 6 3/4"	lugged bracketed	2 at 4'6" x 2'6"	24"	4'6"	✓
Raised Quarter Deck Bulkhead39 .304 .40	6 x 3 1/2 x 34 3/4 6 x 3 1/2 x 387	28 1/2" 24 1/2" 6 3/4"	lugged bracketed	none	-	4'10"	✓
Bridge, After Bulkhead				✓					
Bridge, Forward Bulkhead				✓					
Forecastle Bulkhead26	3 x 2 1/2 x 30 L	28 1/4"	none	2 at 5'0" x 3'0"	18"	7'0"	✓
Trunk, Aft44	3 x 3 x 349 .25 L	54"	large brackets using 4" frame	✓	✓	2'9"	✓
Trunk, Forward44	3 1/2 x 3 x 344 3 x 3 x 28 L	24"	large brackets using 4" frame	✓	✓	4'10"	✓
Exposed Machinery Casings on Freeboard or Raised Quarter Decks ...				✓					
Exposed Machinery Casings on Superstructure Decks									
Exposed Machinery Casings on Superstructure Decks									
Machinery Casings within Superstructures not fitted with Class I Closing Appliances34	.30	3 x 3 x 30 L	24"	none	2 at 5'0" x 1'9"	18"	7'9"	✓
Deckhouses on Flush Deck Ships ...					✓				

Particulars of Closing Appliances (state if capable of being manipulated from both sides).

Poop Bulkhead	W.T. hinged steel doors operated from both sides	✓
Raised Quarter Deck Bulkhead ...	no openings	✓
Bridge, After Bulkhead		✓
Bridge, Forward Bulkhead		✓
Forecastle Bulkhead	Hook bolted plates	✓
Exposed Machinery Casings on Freeboard or Raised Quarter Decks ...		✓
Exposed Machinery Casings on Superstructure Decks	1 7/8" hinged wood doors operated from both sides	✓
Machinery Casings within Superstructures not fitted with Class I Closing Appliances		✓
Deckhouses on Flush Deck Ships ...		✓

PARTICULARS OF PROTECTION TO OPENINGS, ETC.

The following diagrams should be used to indicate the positions of cargo and coaling hatchways, gangway, cargo and coaling ports, ventilators, companionways, etc., which would affect the seaworthiness of the ship :—



Particulars of fiddley, funnel and ventilator coamings, engine room skylight and other openings in machinery casing tops and their means of closing :—

Fidley, found & vent coamings & engine room skylight
of steel & of satisfactory construction. ✓

Particulars of Flush Bunker Scuttles:— 1- 21" scuttle on Poop deck to galley coal bunker in Poop tween decks, bayonet jointed.

Particulars of Companionways:— Companionway in stid deckhouse (aft end) on Poop deck giving access to Poop accom. and cabin flat. 1 1/2" hinged hardwood door 5'0" x 2'0" operated from both sides. Sill 13" ✓	Companionway at after end of Saloon deckhouse giving access to stateroom hatch. 1 3/4" hinged hardwood door 5'0" x 2'6" operated from both sides. Sill 18" ✓ above trunk deck.	Companionway on port & starboard sides of Saloon deckhouse giving access to refrigerating machy and storeroom below. Hinged stid doors 5'0" x 2'0" operated from both sides. Sills 3 1/2" above R. & P. deck. ✓
----------------------------------------------------------------------------------------------------------------------------------------------------------------------------------------------------------------	--------------------------------------------------------------------------------------------------------------------------------------------------------------------------------	-----------------------------------------------------------------------------------------------------------------------------------------------------------------------------------------------------------------

Particulars of Ventilators in exposed positions on freeboard and superstructure decks :—

Forecastle: - 1-9" went to Forecastle store craming, 36"x 22"
2-6" goesouch went to Forecastle 18" high.

Upper d/e ford: 1-18" went to No 1 hold craming 5'-0" x 40 supported
2-18" " No 1 & 2 holds (OP) " 11'-9" x 50 "
1-18" " No 2 hold " 36" x 40 "
2-12" " to Store " 36" x 34

R.O. deck
1-18" " " " 54" x 34 supported
1-18" " " No 3 hold " 36" x 40
4-12" " " Store " 36" x 34
2-18" " to No 3 & 4 holds (OP) " 11'-9" x 50 supported
1-18" " No 4 hold " 36" x 40
2-6" " to Pump Room " 30" x 30
2-12" " to Cofferdam " 30" x 34

Roof deck
2-15" vents to Roof lines deck 30"x36
2-9" " " " " 30"x32
1-15" " " g alley ✓ 30"x36
6-6" grommet vent 18" high
1-7" " " 18" high

Closing appliances
Supplies

Particulars of Air Pipes in exposed positions on freeboard, raised quarter, or superstructure decks:—

Fore cable db. : 1-5" air pipe to Fire Peak 18" high

Upper db. :-

1-4"	"	"	to N ^o 1 DB.	36"	"
2-5"	"	"	to N ^o 2 "	36"	"
2-5"	"	"	to N ^o 3 "	32"	" above trunk top at deckhouse front.

R. Q^r db. :-

2-5"	"	"	to Side Ballast tanks	30" high	
2-2"	"	"	to F.W. Tanks	30"	"
2-5"	"	"	to 4 DB.	30"	"

2-4" air pipes to No 5 D.B Tank 18" high
2-3" " " " No 6 " 18" "
1-3" " " " A.P. Tank 18" "
2-2" " " " Ford D.B. Coffdam 18" "
2-2" " " " after " " 18" "

Closing appliances, exposed
sniffing holes drilled.

EMPIRE JAMAICA

Particulars of Gangway Cargo and Coaling Ports :—

None.

Particulars of Scuppers and Sanitary Discharge Pipes :—

Sanitary discharges from accommodation in bridge house & Poop discharge below R.Q² dk with M.C.I. or brass storm valves at ships side

Waste discharges from midship accommodation above R.Q² dk discharge overboard below R.Q² dk without storm valves at ships side ✓

Waste discharges from accommodation in Poop space discharge overboard between R.Q² dk & cabin flat without storm valves at ships side ✓

Wash tub discharge from wash place on cabin flat aft discharges overboard above cabin flat with brass storm valve at ships side geared & controlled from Poop dk.

Scutter from wash place on cabin flat aft discharges overboard above cabin flat with brass storm valve at ships side geared & controlled from Poop deck ✓

Particulars of Side Scuttles:—

Particulars of Side Scuttles:—
Side scuttles fitted with efficient deadlights in poop space and in cabin flat aft ✓

Vertical distance of Sill of lowest Side Scuttle above top of keel. 27'-8"

Particulars of Guard Rails :—

Particulars of Guard Rails:—

Forecastle:— 2 tier rails 3'8" high with stanchions about 4'6" apart.

Upper deck:— 4'0" high bulwarks with T B.B. rail bar. Stanchions spaced about 6 ft apart

R. QZ deck:— 3'6" " " " " " " " " " 4'6" to 6'0" apart

Pooh deck:— 2 tier rails 3'2" high with stanchions spaced about 5 ft apart.

Particulars of Gangways, Lifelines, etc. :—


Trunk forward & aft fitted with stanchions 3'0" high spaced about 8 ft apart with wire rope line. ✓

Particulars of Freeing Arrangements.						
	Length of Bulwark	Height of Bulwark	Size of Freeing Ports	Number each side	Area each side	Rule area each side
After Well	117'-0"	3'-6"	$4.5 \times .70$ $18.0 \times .70$ $18.0 \times .70$	3	5.25 12.60 12.60	23.4 s.f.
Forward Well	87'-9"	4'-0"	$18.0 \times .70$ $18.0 \times .70$ $6.0 \times .70$	3	12.60 12.60 4.20	17.55 s.f.

State position of each freeing port { After Well:— from *Deck front* 11'-6", 42'-9", 73'-0" ——— 6" up.
(F. and A. position and height above deck edge) { Forward Well:— " " " 9'-0", 45'-9", 64'-6" ——— 7" up.

State whether the freeing ports are fitted with shutters, bars, or rails, and give particulars of such:— *not required.*

Additional area where sheer is less than standard.



© 2021
Lloyd's Register

PARTICULARS OF PROTECTION TO OPENINGS, ETC.

HATCHWAYS ON FREEBOARD AND SUPERSTRUCTURE DECKS.													
Description of Hatchway			N°1	N°2	ESCAPE HATCHES	HATCH TO F.P. STORE	N°3	N°4	ESCAPE HATCH	TO F.C.L.E. SPACE	PUMP ROOM	TO STORE	TO MAG.
Dimensions of Hatchway			24'9" x 20'0"	24'9" x 26'0"	2'3" 2'6" 2'3" 2'0"	4' x 3'	40'6" x 26'0"	22'6" x 26'0"	4'9" x 2'0"	2'0" x 2'0"	2'3" x 2'3"	2' x 2'	2' x 2'
COAMINGS	Height above Deck	...	← 12 x 3 1/2 x 45 J →	9 x 3 1/2 x 44 J	9 x 3 1/2 x 35 J	← 12 x 3 1/2 x 45 J →	9 x 3 1/2 x 44 J	18" 35 35	18" 35 35	18" 35 35	18" 35 35	18" 35 35	18" 35 35
	Thickness	Sides	above trunk	above trunk	above trunk	above trunk	above trunk	above trunk	above trunk	above trunk	above trunk	above trunk	above trunk
	Stiffeners	Ends
	Brackets, Stays
HATCH BEAMS	Number	...	4	4	6	3	5'9 1/2	5'7 1/2	18 1/4 x 36	17 1/2 x 36	4 1/2	4 1/2	4 1/2
	Spacing	...	4'11 1/2	4'11 1/2	5'9 1/2	5'7 1/2	18 1/4 x 36	17 1/2 x 36	4 1/2	4 1/2	4 1/2	4 1/2	4 1/2
	Scantling and Sketch	...	18 1/4 x 36	21 x 34	18 1/4 x 36	17 1/2 x 36	4 1/2	4 1/2	4 1/2	4 1/2	4 1/2	4 1/2	4 1/2
	Bearing Surface	...	4 1/2	4 1/2	4 1/2	4 1/2	4 1/2	4 1/2	4 1/2	4 1/2	4 1/2	4 1/2	4 1/2
FORE AND AFTERS	Number
	Spacing
	Unsupported Lengths
	Scantling* and Sketch
	Bearing Surface
HATCH COVERS	Material	...	← wood →	wood	wood	← wood →	wood	Efficient W.T. hinged	Efficient W.T. hinged	wood 3" Plug	Efficient W.T. hinged	wood 3" Plug	Efficient W.T. hinged
	Thickness	...	3"	3"	3"	3"	3"	2 1/2	2 1/2	2 1/2	2 1/2	2 1/2	2 1/2
	How fitted	...	F+A	Plug	ath	F+A	ath	slat	slat	slat	slat	slat	slat
	Bearing Surface	...	3"	2 1/2	2 1/2	3"	2 1/2	2 1/2	2 1/2	2 1/2	2 1/2	2 1/2	2 1/2
Spacing of Cleats	24"	21" x 24"	20"	24"	24"	24"	24"	24"	24"	24"	24"
Number of Tarpaulins	2	2	2	1	2	2	2	2	2	2	2
*Are wood fore and afters steel shod at all bearing surfaces? <input checked="" type="checkbox"/>													
Are battens and wedges efficient and in good condition? <input checked="" type="checkbox"/>													
Are tarpaulins in good condition and in accordance with rule requirements? <input checked="" type="checkbox"/>													
Are lashings provided in accordance with rule requirements? <input checked="" type="checkbox"/>													
Locking bars fitted to Nos 1, 2, 3 & 4 hatchways.													

Particulars of any special features:—

Deeper loading endorsement required.

Endorsement at first survey and at surveys for renewal of Certificate:—

The fittings and appliances are in accordance with the particulars shown on this form (or as now modified) and are in good condition.



© 2021

Lloyd's Register Foundation