

S.S. GENERTON.
&
S.S. HERMISTON.

— PROFILE & DECK PLAN —

S. S. NO 448 & 457.

DIMENSIONS
LENGTH L.W.L. = 410' 0"
BREADTH MOULDED = 53' 8"
DEPTH : (UPPER DK.) = 34' 7"
 " (2ND ") = 26' 7"
CLASS 100A1. WITH FREEBOARD.

Scale $\frac{1}{8}" = 1 \text{ FOOT}$

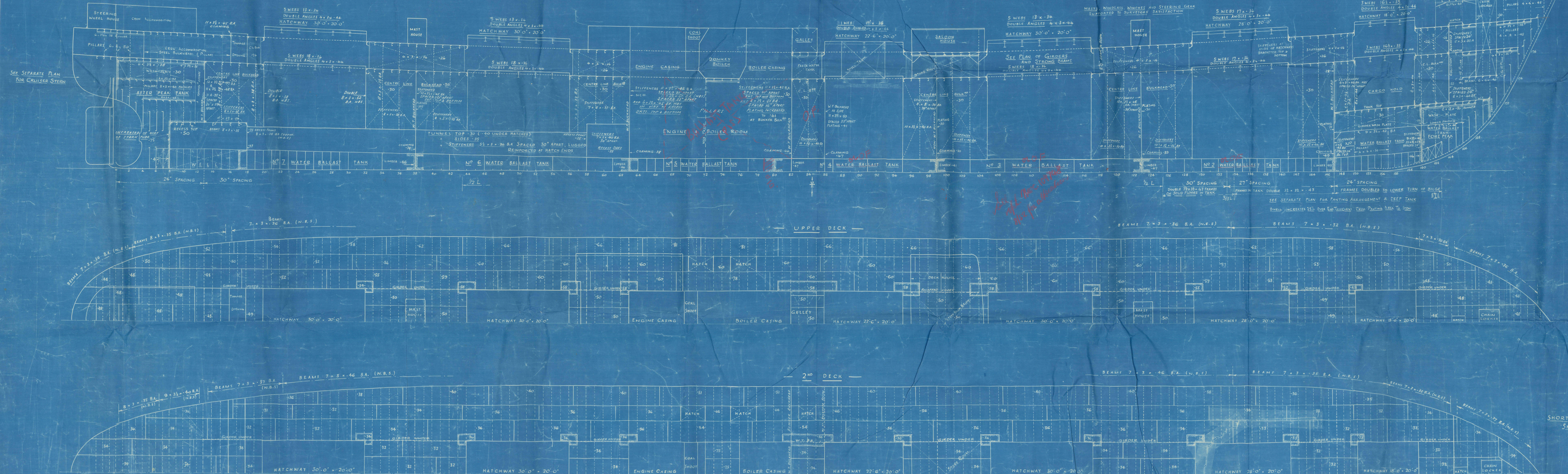
IF W.T. BULKHEADS ARE PLATED VERTICALLY ABOVE BOTTOM STRAKE
THICKNESS OF PLATING MAY BE A MEAN OF THOSE SHOWN ON PLAN

SEE SEPARATE PLAN FOR DECK GIRDERS

HATCH SIDES AND ENDS

MASTS, MINDLESS WINCHES AND STEERING GEAR
SUPPORTED TO SURVEYORS' SATISFACTION

FORECASTLE 8' 0" HIGH



SHORT BROTHERS LTD.
SHIPBUILDERS
SUNDERLAND

"
NEGO TRADER."
"

~~#EX~~

S.S. Herdston.

(Spart Bros., Ltd., No. 457.)

BUNDERLAND RPT. NO. 32/23.

Profile & Decks (as Built.)



© 2021

Lloyd's Register
Foundation

013545-013552-0002