

Lloyd's Register of Shipping.

Index No. 43748
(For London Office only.)SURVEYS FOR FREEBOARD.
(CONDITIONS OF ASSIGNMENT.)

Ship's Name M.S. "ESKIMO" n.n. ZERO

Port of Survey HAUGESUND.

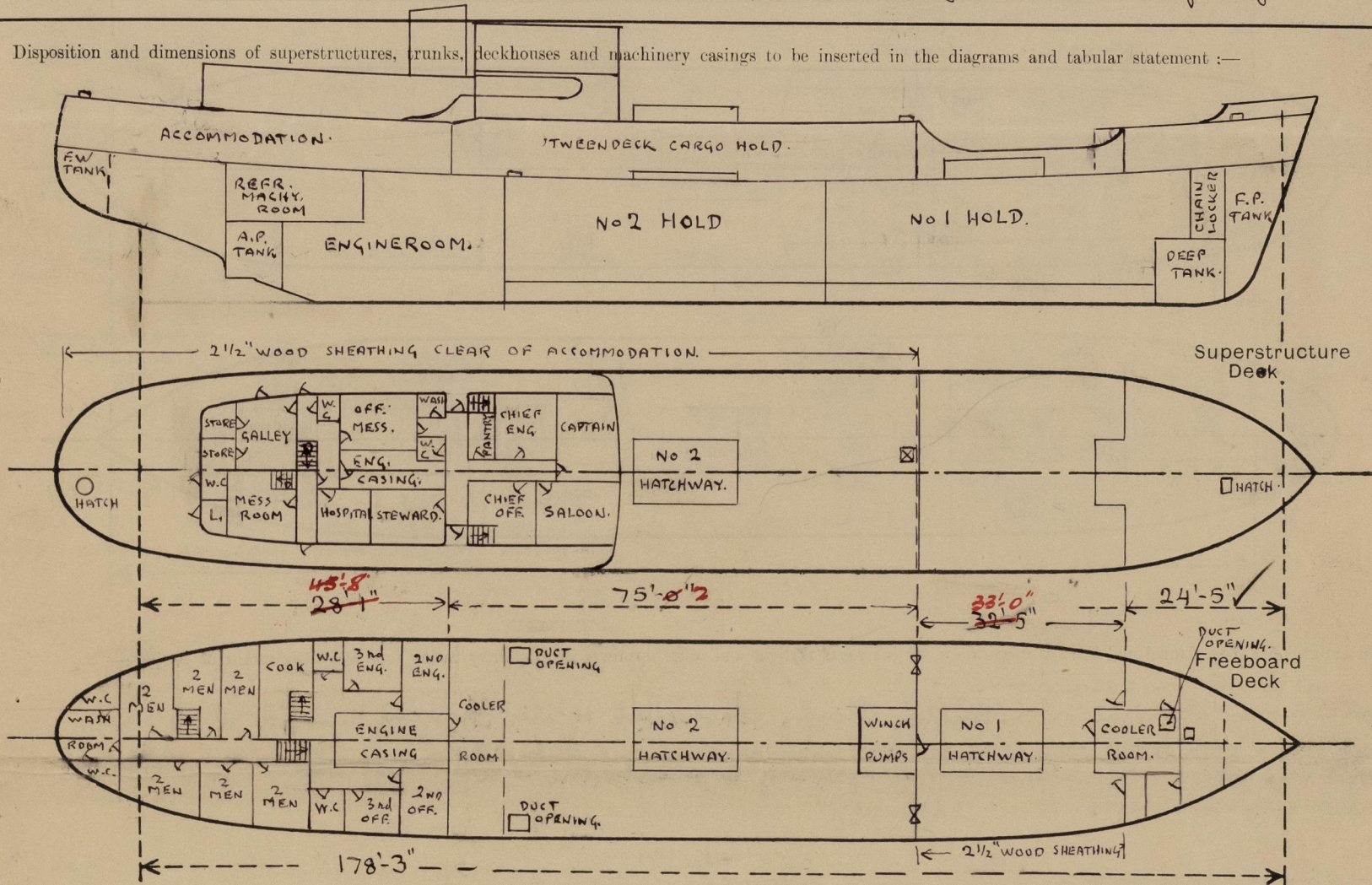
Official Number. ✓

Surveyor's Signature S.A. Gide

Nationality and Port of Registry NORWEGIAN, HAUGESUND.

Date of Survey 20th August 1952 & subsequently.

Disposition and dimensions of superstructures, trunks, deckhouses and machinery casings to be inserted in the diagrams and tabular statement:—



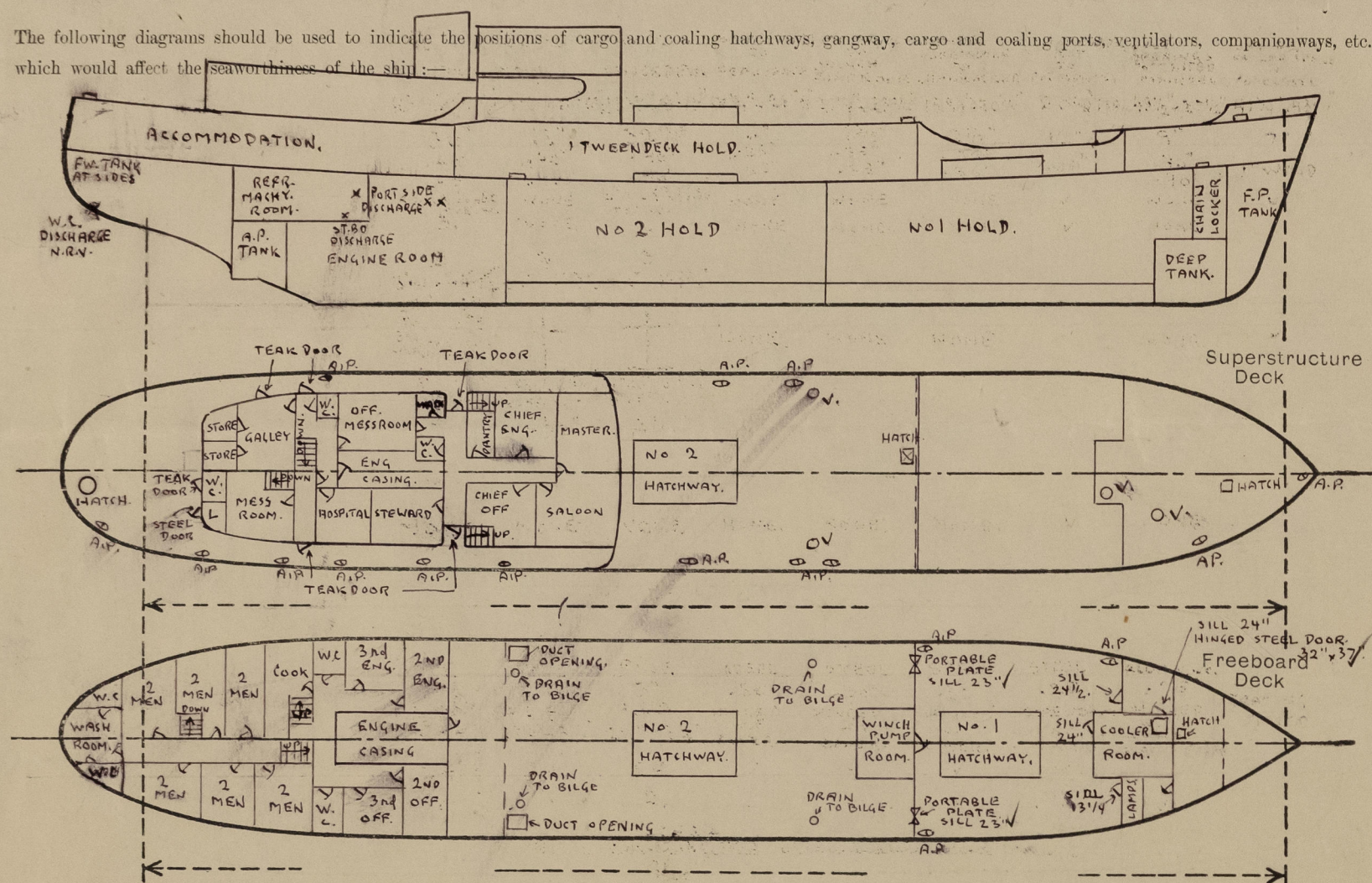
Particulars of Superstructures, Trunks, Casings, Deckhouses.

	Coaming	Plating	Stiffeners	Spacing	End Attachments of Stiffeners	Size of Openings	Height of Sills	Height of Casings
Poop Bulkhead ...								Height of Poop from aft to forward end of Eng. casing 6'-9 1/2". Extended poop to bridge front 8'-0 1/2" high ✓
Raised Quarter Deck Bulkhead ...								
Bridge, After Bulkhead ...								
Bridge, Forward Bulkhead ...	✓	.30"	4" x 3" x .28" and 5" x 3" x .32" all with 2 1/2" x 2 1/2" FLATS	23 1/2" - 50 1/4"	BRACKETS TOP & BOTTOM	36" x 48" 23 5/8" x 49 1/2"	23" 25"	8'-0 1/2" ✓
Forecastle Bulkhead ...	✓	.25"	3" x 2 1/2" x .24" O.A. & 2 1/2" x 2 1/4" x .26" O.A. & 3" PL. OF SHD. PLATING	13" - 32"	None.	23 1/4" x 47 1/2" 22 1/2" x 58 1/4" 23 1/2" x 33 1/2"	24 1/2" 13 1/4" 24"	6'-6 3/8" ✓
Trunk, Aft ...								
Trunk, Forward ...								
Exposed Machinery Casings on Freeboard or Raised Quarter Decks ...	✓	.20"	3 1/8" x 3 1/8" x .30" T.W.A.	22"	BRACKETED AT TOP	24" x 47"	10"	6'-9 1/2" ✓
Exposed Machinery Casings on Superstructure Decks ...	✓	.20"	2 1/2" x 2 1/2" x .25" T.W.A.	25 1/4"	None.	23 3/4" x 5'-11"	4"	7'-2" ✓
Machinery Casings within Superstructures not fitted with Class I Closing Appliances ...								
EXTENDED POOP DECK. Deckhouses on Flush Deck Ships ...	18" x .32"	.20"	3" x 2" x .24" T.W.A. & 3" x 3 1/8" FLATS AT FRONT OF HOUSE	30" & 25" - 28"	BRACKETS TOP & BOTTOM AT FRONT OF HOUSE	23" x 4'-8 1/2" & one 28" x 4'-8 1/2"	18" ✓	7'-2" ✓

Particulars of Closing Appliances (state if capable of being manipulated from both sides).

Poop Bulkhead	HINGED W.T. STEEL DOOR. OPERABLE FROM BOTH SIDES. TO COOLER ROOM.
Raised Quarter Deck Bulkhead ...	✓
Bridge, After Bulkhead ...	✓
Bridge, Forward Bulkhead ...	ONE EACH SIDE, PORTABLE PLATES. CLASS II. ✓
Forecastle Bulkhead ...	AT MIDDLE LINE. HINGED W.T. STEEL DOOR CLASS I. OPERABLE FROM BOTH SIDES. ✓
Exposed Machinery Casings on Freeboard or Raised Quarter Decks ...	PART SIDE. HINGED W.T. STEEL DOOR. OPERABLE FROM BOTH SIDES. CLASS II. ✓
Exposed Machinery Casings on Superstructure Decks ...	STBD SIDE TO STORE. ORDINARY HINGED STEEL DOOR. OPERABLE FROM BOTH SIDES. ✓
Machinery Casings within Superstructures not fitted with Class I Closing Appliances ...	TO COOLER ROOM HINGED STEEL W.T. DOOR. 2 CLIPS AT SIDE. OPERABLE FROM BOTH SIDES. ✓
EXTENDED POOP DECK. Deckhouses on Flush Deck Ships ...	see above under Poop bulkhead. ✓
	ORDINARY HINGED STEEL DOOR. OPERABLE FROM BOTH SIDES. ✓
	TO PASSAGES SUBSTANTIAL TEAK DOORS. ORDINARY LOCK & DOORKNOB. OPERABLE FROM BOTH SIDES. ✓

The following diagrams should be used to indicate the positions of cargo and coaling hatchways, gangway, cargo and coaling ports, ventilators, companionways, etc., which would affect the seaworthiness of the ship:—



Tunnel direct on casing top. ✓
Ingress room skylight on casing top, strongly constructed of steel, having hinged steel covers with 2 thick bulls' eyes in each. ✓
Steel skylight on boat deck to galley of strong construction having steel covers with 2 thick glasses on each cover. ✓

None fitted

None fitted.

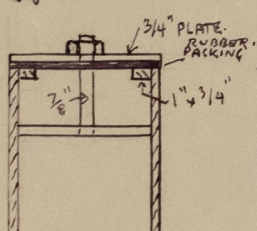
~~So far fitted the following~~

On Forecastle deck: - 2 off $12" \times 35\frac{5}{8}" \times .40"$. Covers not yet fitted

On extended Poop deck: - 2 off 12" x 33½" x .40"

Please see London letters Ref. Eng. 11/12. & 18/12-52.

1 off each side 3" x 8" high gooseneck to W.C. below. Wood plug fitted.



When carrying low temperature cargo and all portable tops removed, temporary closing appliances provided for all 4 ventilators above, consisting of $3/4"$ thick steel cover with rubber packing and secured with a spindle fitted over yokes near top of coaming. Bearing surface of cover 1.40" - Canvas covers also provided.

B-6 6/2.53 S.A.E.

Particulars of Air Pipes in exposed positions on freeboard, raised quarter, or superstructure decks:—

On forecastle deck: - 1 2 2" dia. gooseneck type to F.P. tank 33 1/4" above deck. ✓
1 2 2 1/2" " " " Starboard to No 1 tank. 32 1/2" above deck. ✓

On maindeck in forewell: - 1 port side $\varnothing 2\frac{1}{2}$ " dia. to cofferdam, gooseneck type $33\frac{1}{2}$ " -" -"
1 mid & starboard $\varnothing 2\frac{1}{2}$ " dia. to D.B. tank -" -" $31\frac{1}{2}$ " - 32" above deck. ✓

On extended Proopdeck forward of saloon house:-

2 on port side and 3 on starboard side @ $2\frac{1}{2}$ " dia. to D.B. tanks. Goose-neck type $36\frac{1}{2}$ " above deck ✓

3 on starboard @ 2" dia. Goose-neck type to lub oil tanks. 30" above deck.

1	"	-11-	@ 2 1/2 "	-11-	"	A.P. tank.	31 1/2 "	-4-	-11-
2	"	-11-	@ 2 " "	-11-	"	F.W. tanks.	38 1/2 "	-11-	-11-
							26 1/4 "	-4-	-11-

all to F.O. tanks fitted wire gauze. ^{and canvas covers} Remaining fitted wood plugs.
CANVUS COVERS 1 on starboard 2 1/2" dia. loose neck type to almost hold cofferdam 3 1/4" above deck.

None fitted.

1 sanitary discharge at cruiser stern from W.C. in poop space aft end 9'-0" below foreboard deck with N.R.V. ✓

2 sanitary discharges port side engineroom from W.C. in poop space and deck house 67" below
freeboard deck with N.R.V. AIR FLAPVALVE ALSO FITTED IN W.C. PAN. BGN 612-53 S.A.E.

1 sanitary discharge port side engine room from washroom in deckhouse 15' below freeboard deck with N.R.V. ✓

deck with N.R.V. ✓
1 sanitary discharge starboard side engine room from washroom in deckhouse 3'-3" below
freeboard deck with N.R.V. ✓

2 scuppers each side 'twendecks to the bilges fitted with screw down non return valves
measuring from superstructure deck and fitted with indicators ✓

1 scupper from cooler room in 'twendeck space to engine room bilge. Liquid seal fitted. There are no scuppers or sanitary discharges leading overboard from spaces below the foreboard deck.

Sidelights in fore-castle fitted ~~6~~ 1. deadlights
Sidelights in poop-space, 13 on starboard and
9 1/2" dia. fitted partly aluminium and par
deadlights.

BRONZE DEADLIGHTS FITTED 5/2-53 S.A.E.

ALUMINIUM DEADLIGHTS APPROVED BY
NORWEGIAN AUTHORITIES.
PARTICULARS SUBMITTED 22/1-53.
Bgm. 6/2-53 S.A.E.

Vertical distance of Sill of lowest Side Scuttle above top of keel... None fitted below freeboard deck.

Particulars of Guard Rails:— On Newcastle dock:— Bulwark plate at fore end 13'0" long x 33" high. Remainder guard rails 39" high. 3 rods. Ball stanchions 4 ft. apart. ✓
On extended Popple dock Abreast saloonhouse 46" high bulwark. Remainder forward of saloonhouse T bar stanchions 43½" high. 3 rods. Stanchions 3'11" apart. ✓
Aft saloonhouse T bar stanchions. 44" high. 3 rods. Stanchions 3'9" apart.

~~No~~ lifelines fitted in forward well


LIFELINES PROVIDED.
RCN G/2-53 S.A.E

Particulars of Freeing Arrangements.						
	Length of Bulwark	Height of Bulwark	Size of Freeing Ports	Number each side	Area each side	Rule area each side
After Well						
Forward Well	32'-5"	39 1/2"	3 off 29 1/2" x 13" 1 " 26 1/2" x 13"	4	10.4 sq ft.	10 sq ft.

State position of each freeing port { After Well :-
(E. and A. position and height above deck edge) { Forward Well :- 21", 6'-5", 11'-9" & 17'-4" forward of Bridgefront . 4"

State whether the freeing ports are fitted with shutters, bars, or rails, and give particulars of such;— *Pivoted shutters.*

Additional area where sheer is less than standard.



© 2021
Lloyd's Register
Foundation

PARTICULARS OF PROTECTION TO OPENINGS, ETC.

HATCHWAYS ON FREEBOARD AND SUPERSTRUCTURE DECKS.											
Description of Hatchway	No 1	No 2	No 2	ON FORECASTLE TO PEAKSPACE	ON BRIDGE TO WINCH PUMP ROOM	INSIDE FORECASTLE TO CHAINLOCKER	ON POOP DECK ART TO POOPSPACE	DUCT OPENINGS PORT & STARBOARD MAINDECK	INSIDE COOLER SPACE IN FORECASTLE
Dimensions of Hatchway	16'-1 1/2" x 9'-11 3/8"	16'-6 3/4" x 10'-0 1/4"	16'-7" x 9'-11"	14' 1/4" x 26 5/8"	21' 1/4" x 23' 1/4"	15 3/4" x 20 3/4"	20 1/2" DIA.	43 1/2" x 27 1/2"	41' 1/4" x 43' 1/4"
COAMINGS	{	Height above Deck	30" ✓	16 1/2" ✓	32 1/4" ✓	6" ✓	5 3/8" ✓	2 1/2" ✓	12" ✓	9" ✓	7" ✓
		Thickness { Sides	.40" ✓	.40" ✓	.40" ✓	.25" ✓	.35" ✓	.36" ✓	.30" ✓	.40" ✓	7" WOOD
		Thickness { Ends	.45" ✓	.40" ✓	.40" ✓	.25" ✓	.35" ✓	.36" ✓	.30" ✓	.40" ✓	7" WOOD
		Stiffeners ...	5 1/2" x 4" x .60" TOE W. ✓	NONE	4 3/4" x 5" x .50" TOE W. ✓	NONE	NONE	NONE	✓	NONE	✓
Brackets, Stays		3. ✓	NONE	1. ✓	NONE	NONE	NONE	✓	NONE	✓	
HATCH BEAMS	{	Number ...	3 ✓	3 ✓	3 ✓						
		Spacing ...	3' 4 1/4" - 4' 1 1/2" ✓	4' 0" - 4' 3 1/2" ✓	4' 0" - 4' 3 1/2" ✓						
		Scantling and Sketch	2 5/8" x 4" x .40" ✓ TO 3 1/2" x 4" x .40" ✓	12" x 4" x .40" ✓ TO 12" x 4" x .40" ✓	6 5/16" x 6 5/16" x .55" ✓ TO 6 5/16" x 6 5/16" x .55" ✓	NONE	NONE	NONE	✓	NONE	✓
		Bearing Surface ...	3" ✓	2 1/2" ✓	2 3/4" ✓						
FORE AND AFTERS	{	Number ...									
		Spacing ...									
		Unsupported Lengths									
		Scantling* and Sketch	NONE	NONE	NONE	NONE	NONE	NONE	✓	NONE	✓
Bearing Surface ...											
HATCH COVERS	{	Material ...	PINE	PINE	PINE	STEEL	STEEL	STEEL	STEEL	ALUMINUM	
		Thickness ...	3" ✓	2 7/8" ✓	3" ✓	.30" ✓	.30" ✓	.30" ✓	.25" ✓	.25" ✓	
		How fitted	F. & A. ✓	F. & A. ✓	F. & A. ✓	HINGED W.T. COVER ✓	HINGED W.T. COVER ✓	HINGED W.T. COVER ✓	SCREWDOWN W.T. COVER ✓	HINGED W.T. COVER ✓	GRATING FITTED ✓
		Bearing Surface ...	2 5/8" - 4" ✓	2 3/4" - 3 1/8" ✓	2 1/2" - 3 1/8" ✓						
Spacing of Cleats	24" ✓	24" ✓	24" ✓	✓	✓	✓	✓	✓
Number of Tarpaulins	2. ✓	1. ✓	2. ✓	✓	✓	✓	✓	✓
<p>*Are wood fore and afters steel shod at all bearing surfaces? <u>Wood covers fitted</u></p> <p>Are battens and wedges efficient and in good condition? <u>Yes</u></p> <p>Are tarpaulins in good condition and in accordance with rule requirements? <u>Yes</u></p> <p>Are lashings provided in accordance with rule requirements? <u>Yes</u></p> <p><u>GALVANISED END BARS FITTED - Bgn. 6/2-52 SAE</u></p>											

Particulars of any special features:—

This vessel was built as an O/S & M/S Trawler and has now been lengthened and converted for the carriage of refrigerated cargo. ✓
 The main deck in forewell and bridge deck clear of accommodation has been fitted a 2 1/2" pine sheathing with a 15 1/2" broad gutterway at sides. ✓
 Main deck stringer plate doubled port and starboard 4 1/2 framespaces forward and aft of bridge front x 24" x .35".

Report completed and amended
 Bergen 6/2-53
 S.A. Vide.



© 2021

Lloyd's Register Foundation