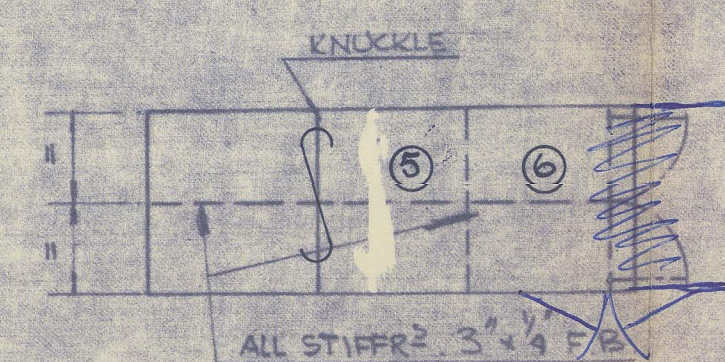


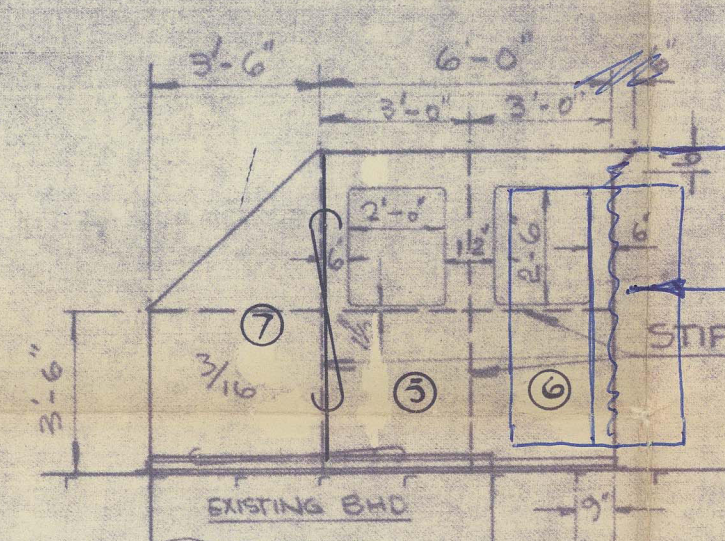
N.2051
CARISBROOKE CASTLE
BOAT DECK EXTENSION, STAIRWAY CANOPIES,
& SCREEN BHD.

SCALE: 1/4" = 1 FOOT & AS MARKED

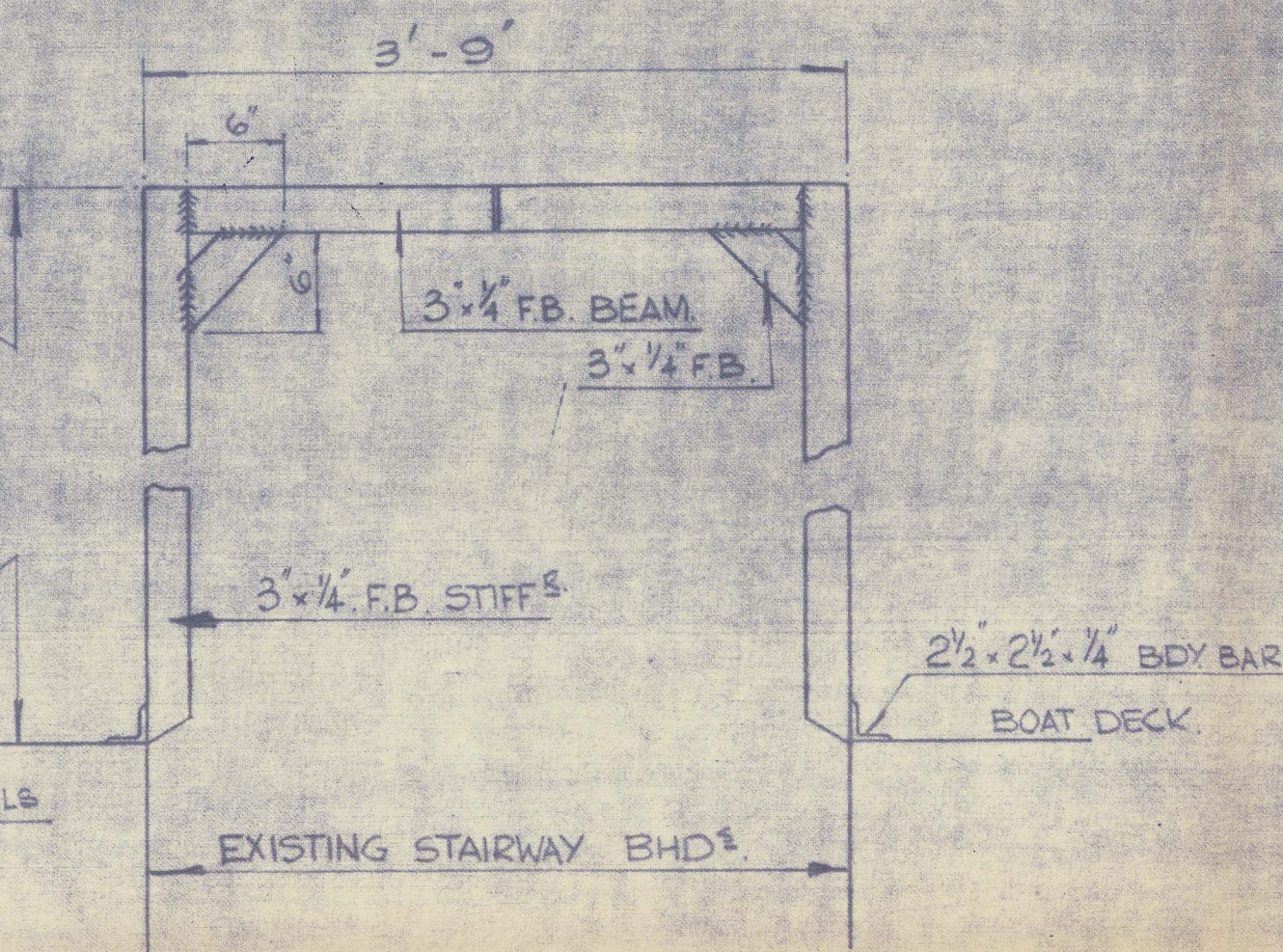
SS/MS
10.1
S.22 Rpt. 0 9795.6
Dated 27-11-62



STAIRWAY CANOPIES
2 OFF

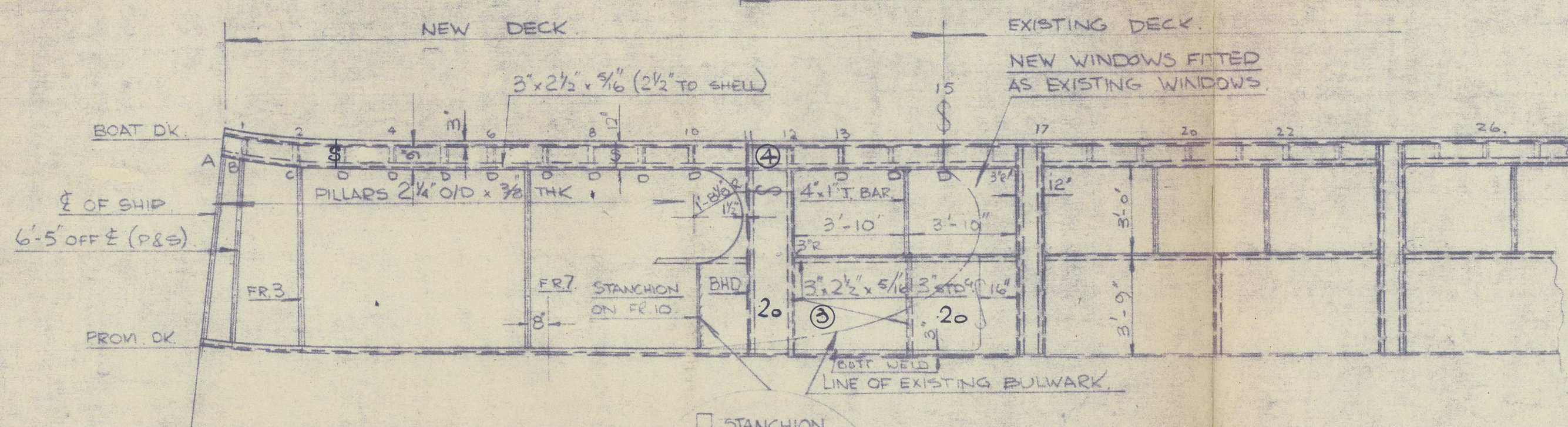
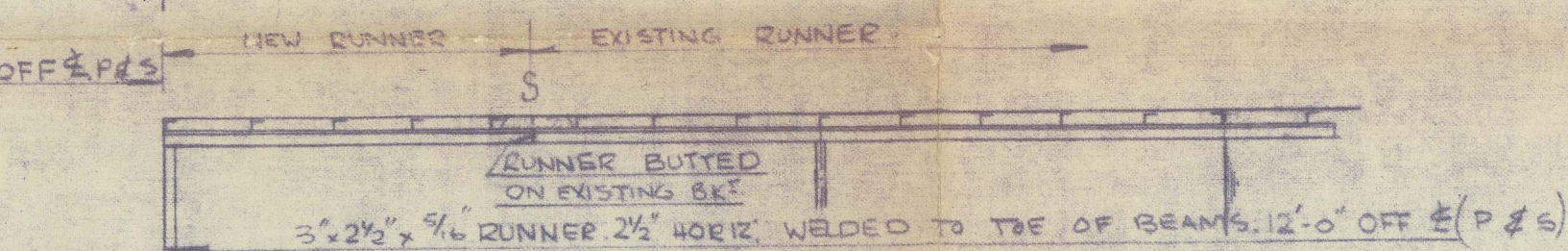
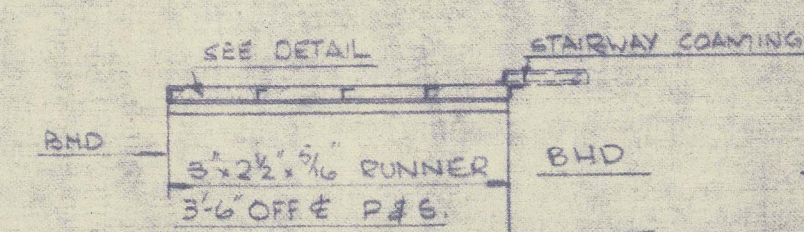
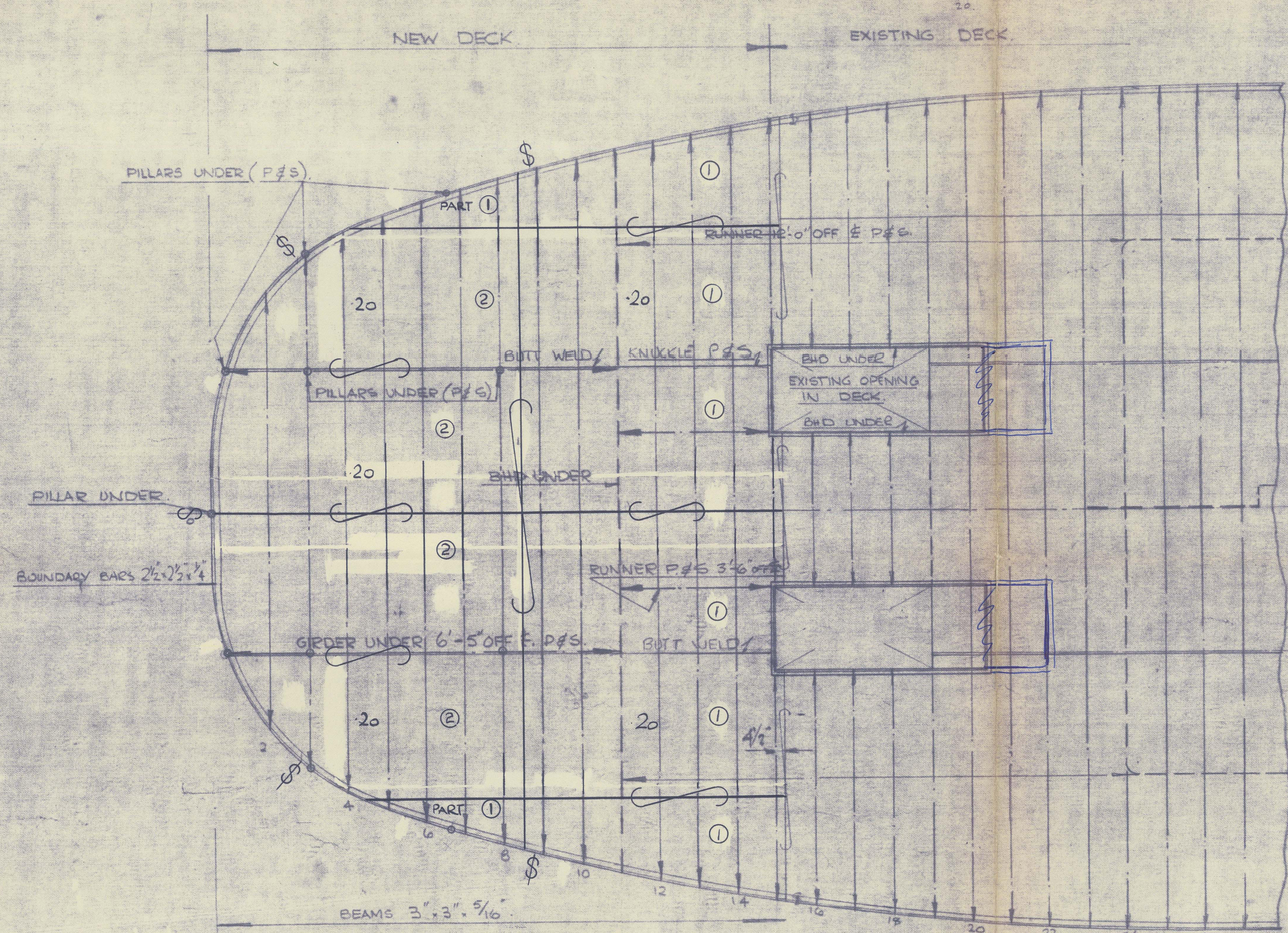


DOUBLE WOODEN
DOORS WITH GLASS PANELS
2 1/2" x 2 1/2" x 1/4" B.D. BAR.

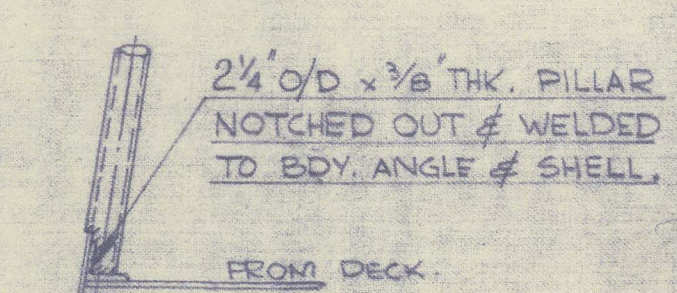
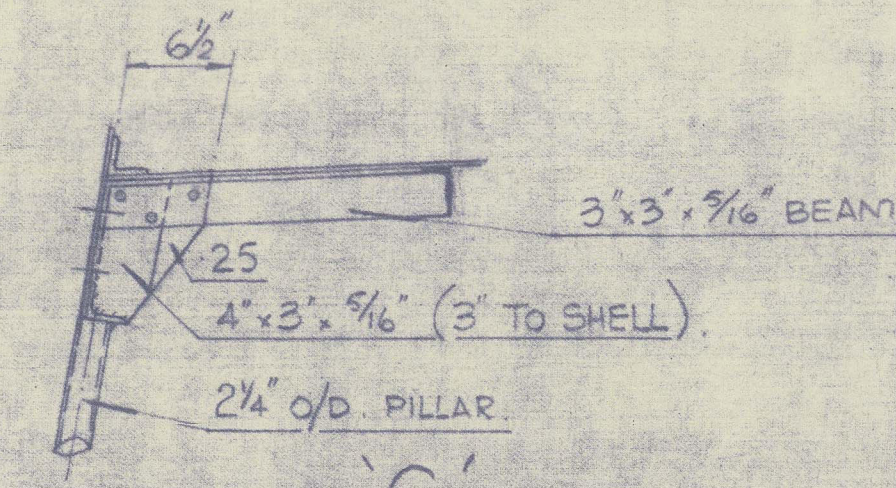
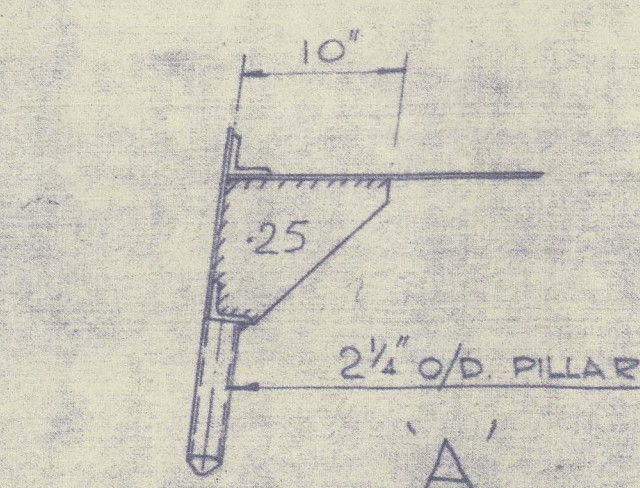


SECTION THRO' STAIRWAY CANOPY

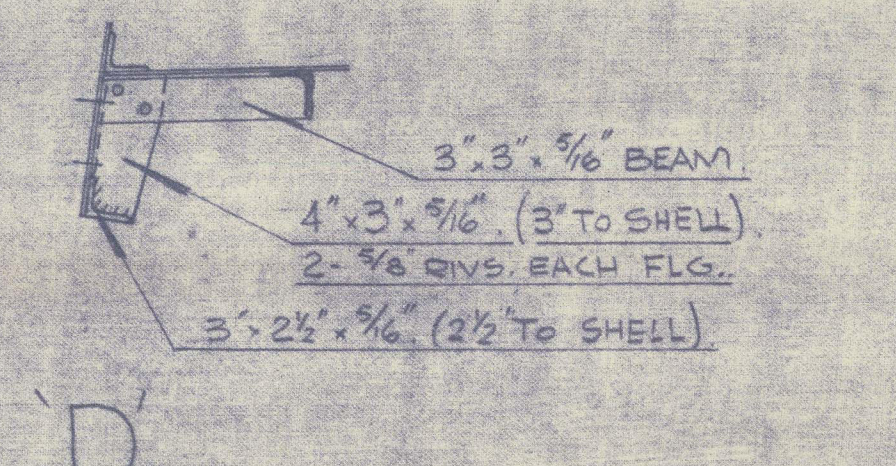
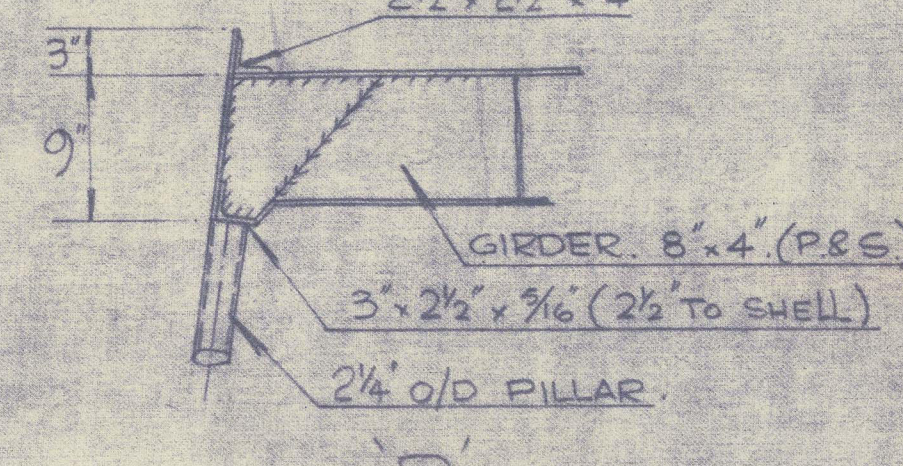
SCALE: 1/4" = 1 FOOT



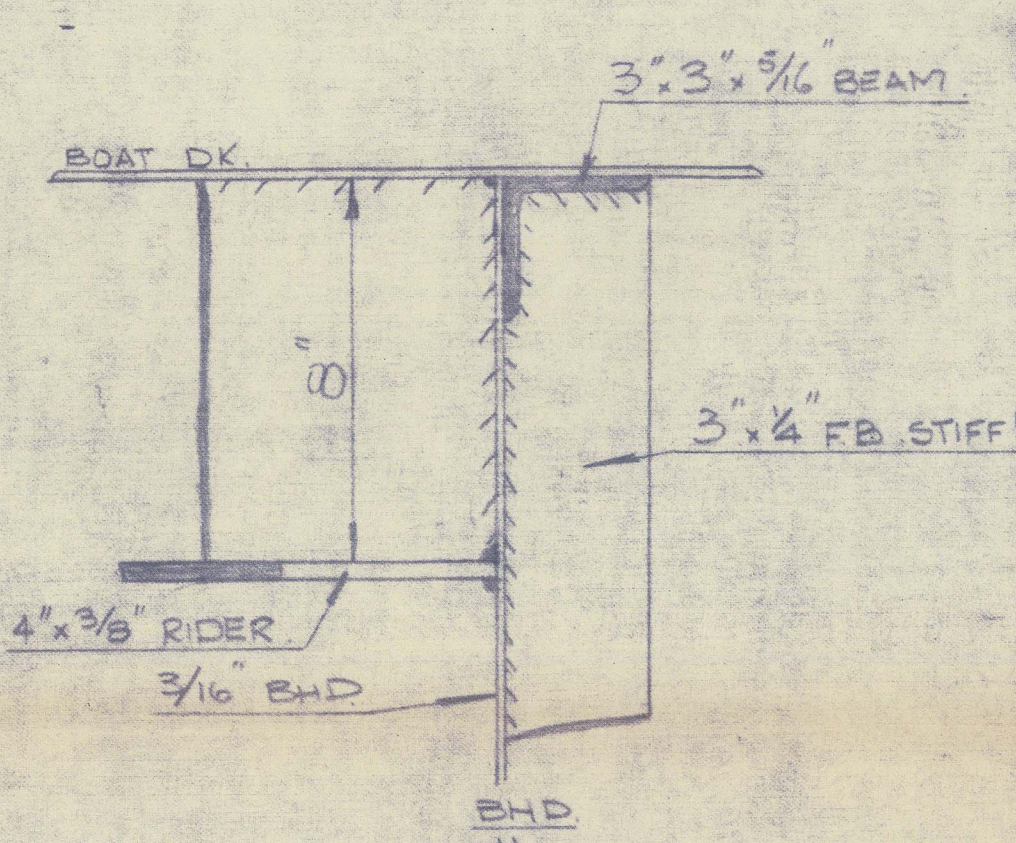
NEW TOPSIDE PLATING



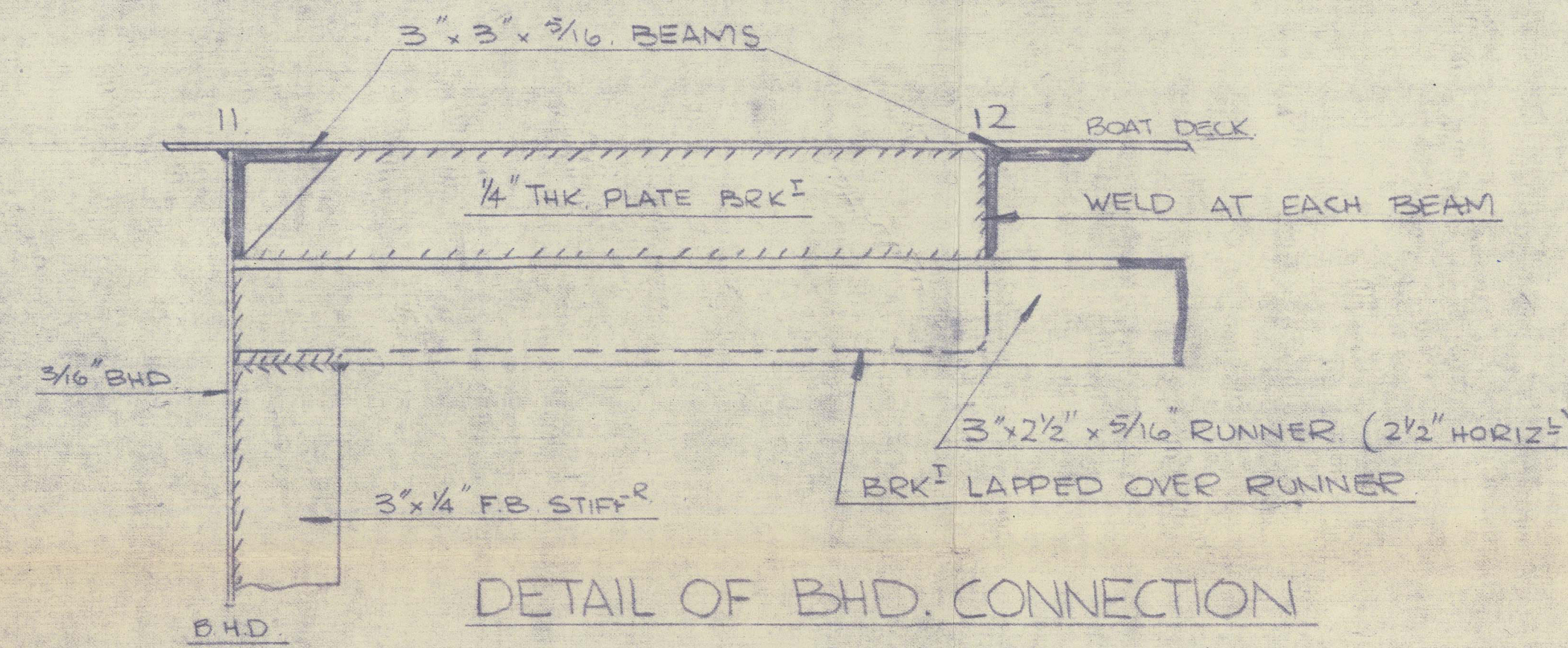
DETAIL OF PILLAR HEEL FITTING
SCALE: 1/4" = 1 FOOT



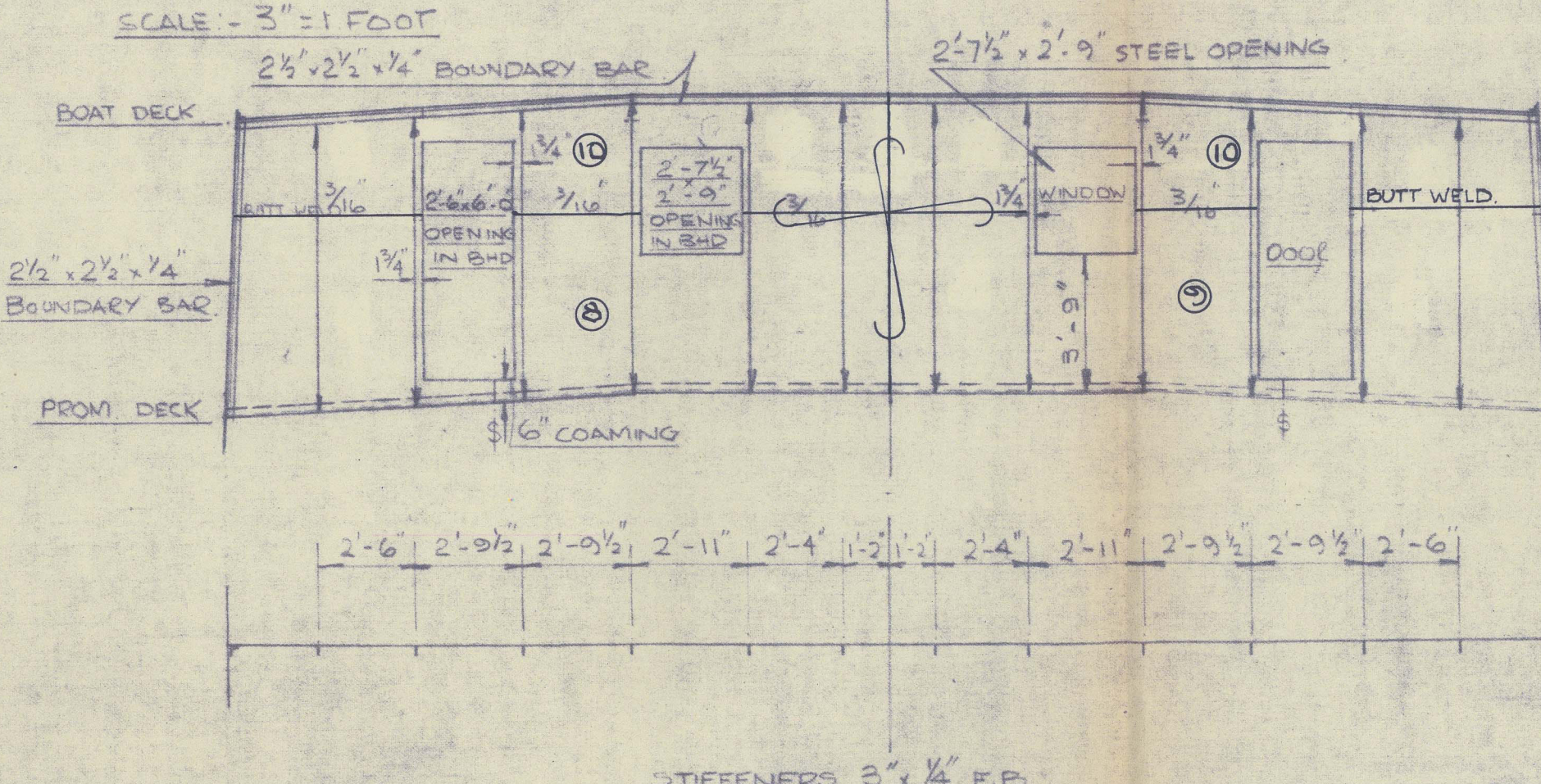
DETAILS OF STIFFENER HEAD CONNECTIONS.
SCALE: 1/4" = 1 FOOT



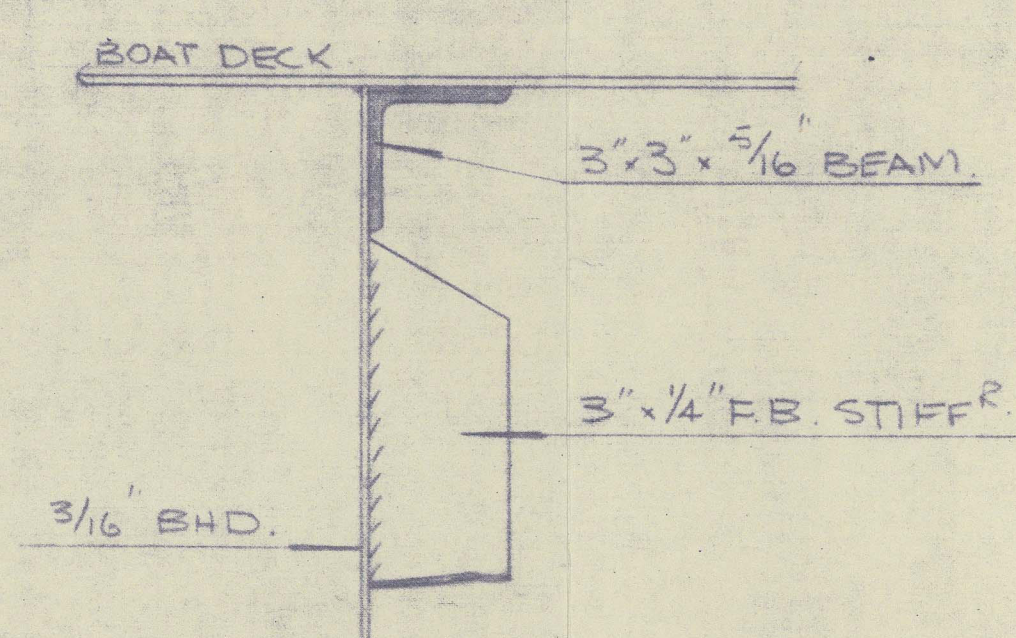
DETAIL OF BHD CONNECTION
IN WAY OF GIRDER
SCALE: 3/8" = 1 FOOT



DETAIL OF BHD CONNECTION
IN WAY OF RUNNER
SCALE: 3/8" = 1 FOOT



NEW BHD ON FR 11 (LOOKING AFT)



TYPICAL DETAIL OF BHD
CONNECTION UNDER DECK
SCALE: 3/8" = 1 FOOT

23/11/62