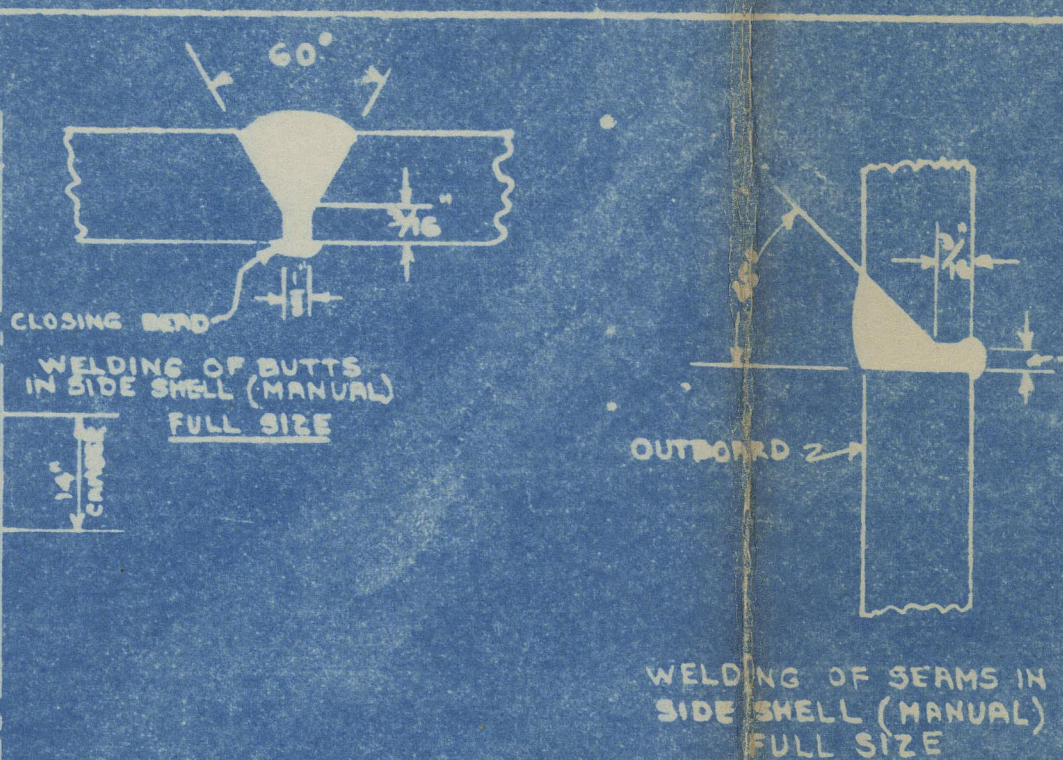


GROSS AREA 28 1/2' X 32 1/2' = 923.44 SQ. FT.
NET AREA 27 1/2' X 32' = 880.00 SQ. FT.

WELDING NOTES

INNER BOTTOM BUTTE V WELDS.
MARGIN PLATE TO SHELL SEE DETAIL.
CENTER GIRDER 3/4" CONTINUOUS TOP AND BOTTOM
SIDE GIRDER 5/8" CONTINUOUS TOP AND BOTTOM
IN ENGINE ROOM.
FLOORS 7/16" CONTINUOUS BOTH SIDES



PRINCIPAL DIMENSIONS.

LENGTH B.P. 32'-0"
BREADTH MOULDED 36'-10 1/2"
DEPTH MOULDED TO UPPER DECK 37'-4"
DEPTH MOULDED TO 2ND DECK 29'-7"
DEPTH TO LENGTH 11.14

CLASS

LLOYDS REGISTER OF SHIPPING # 10081
"WITH FREEBOARD"
SCANTLING SUITABLE FOR A MOULDED DRAUGHT
OF 26'-10", WHICH IS 18 INCHES IN EXCESS OF
THAT FOR A C.S.S. VESSEL

EQUIPMENT at

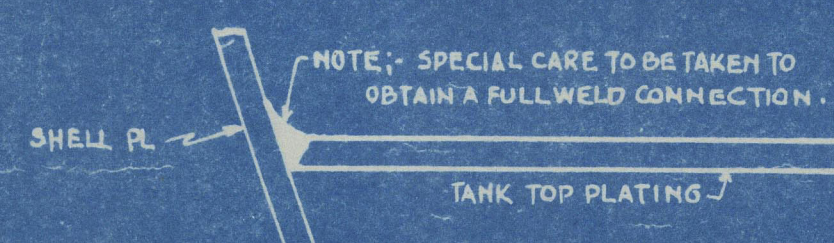
2 STOCKLESS BOWER ANCHORS EACH 7616 LBS
1 STOCKLESS STEAM ANCHOR 2660 LBS
225 FATHOMS STUD CHAIN CABLE
90 FATHOMS OF
120 FATHOMS TOWLINE
2 HAWERS EACH 90 FATHOMS
2 WARPS EACH 90 FATHOMS

SECTION OF TYPICAL HATCH SIDE GIRDER



TANK TOP PLATING CEILING FOR 2'-0"
OUTSIDE THE MATCH LINE IN NO. 2-3 AND 4
HOLDS - ALL CEILING IN NO. 1 AND 5 HOLDS.
TANK MARGIN BRACKETS CEILING IN
ALL HOLDS

DETAIL OF MARGIN PLATE - V WELD TO SHELL -



TODD-BATH IRON SHIPBUILDING CORPORATION.
TODD-CALIFORNIA SHIPBUILDING CORPORATION.

DESIGN AND ENGINEERING BY
GIBBS & COX, INC.
NEW YORK

S.S. "Ocean Tumor"
MIDSHIP SECTION

SCALE 1/2" = 1'-0" DATE NOVEMBER 25, 1940
DRAWN BY DANIEL L. HICK APPROVED [Signature]
TRACED BY J. L. HICK APPROVED [Signature]
CHECKED BY [Signature] APPROVED [Signature]
DR. 11261-511-11-2 VAULT # 5192

Lloyd's Register of Shipping

QUEEN
MANCHESTER

IRENE K

1600-5177410-022410

