

Nos. 1328 - 9.

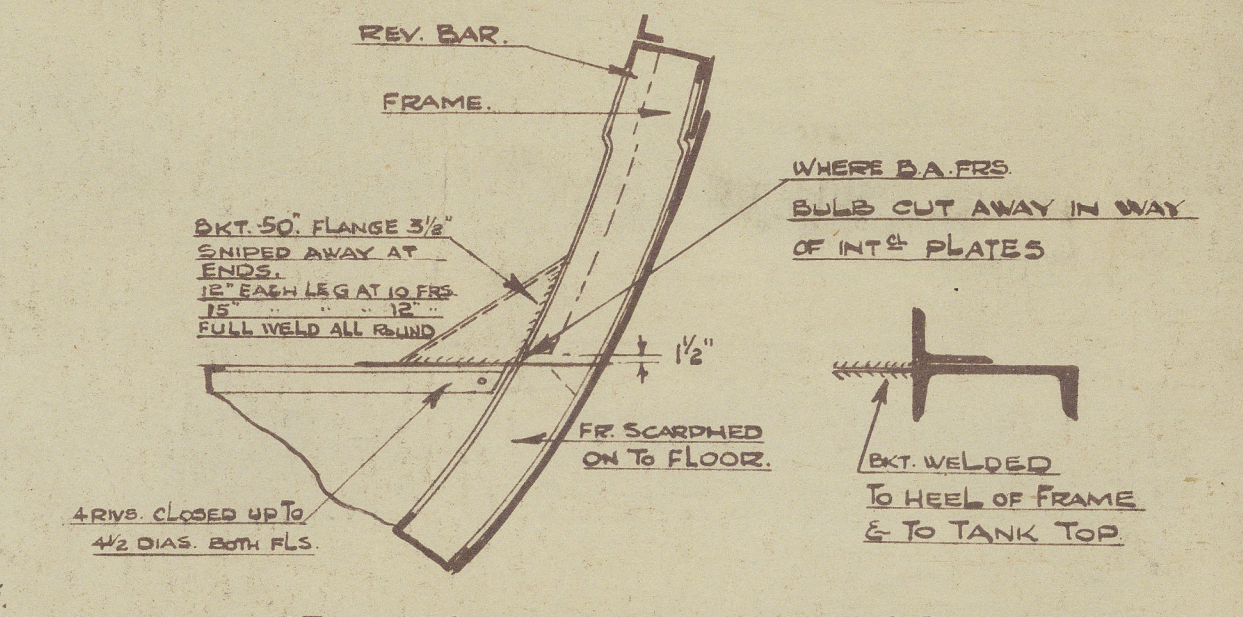
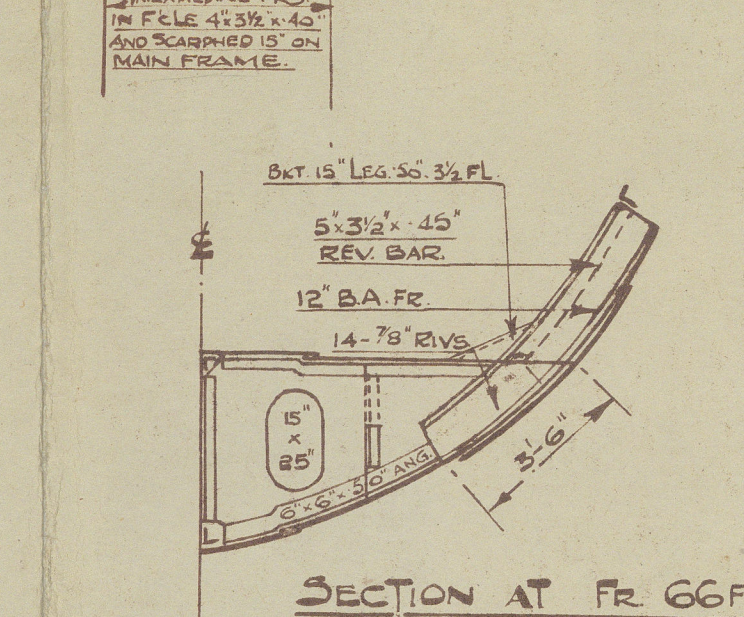
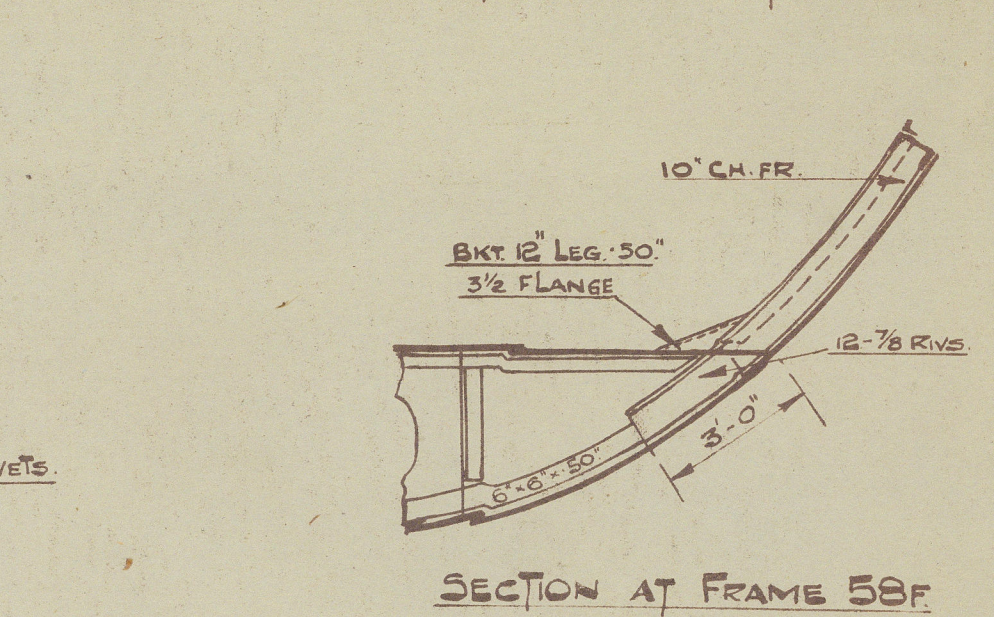
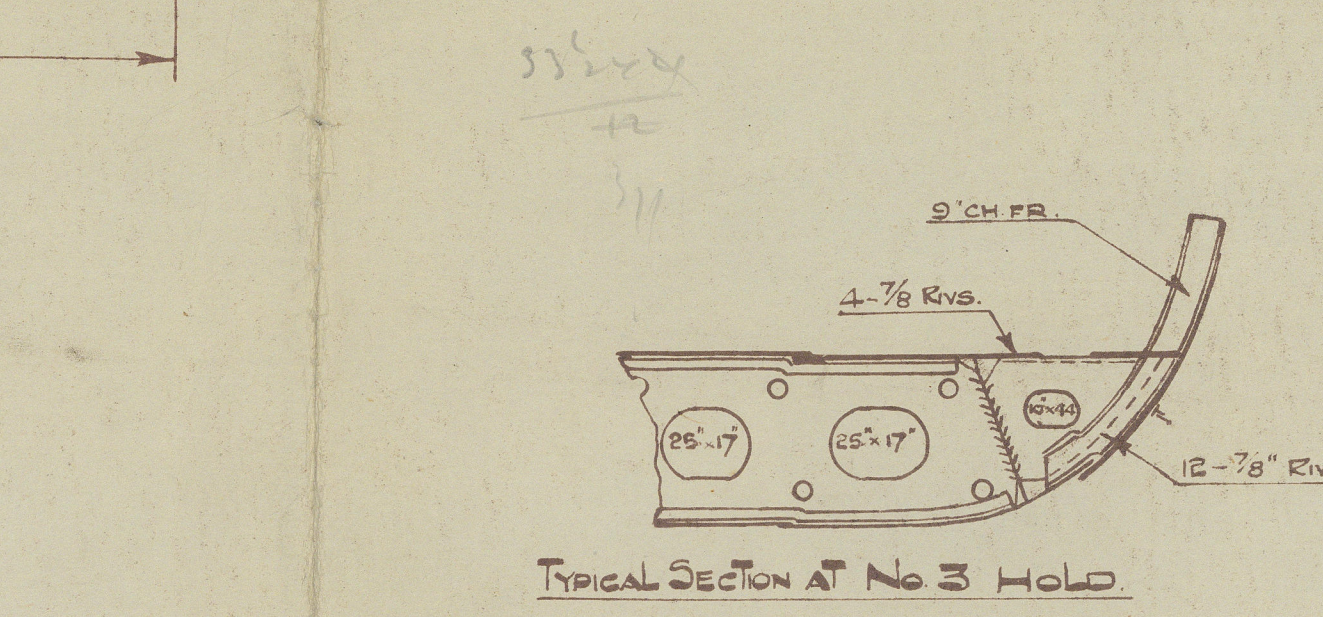
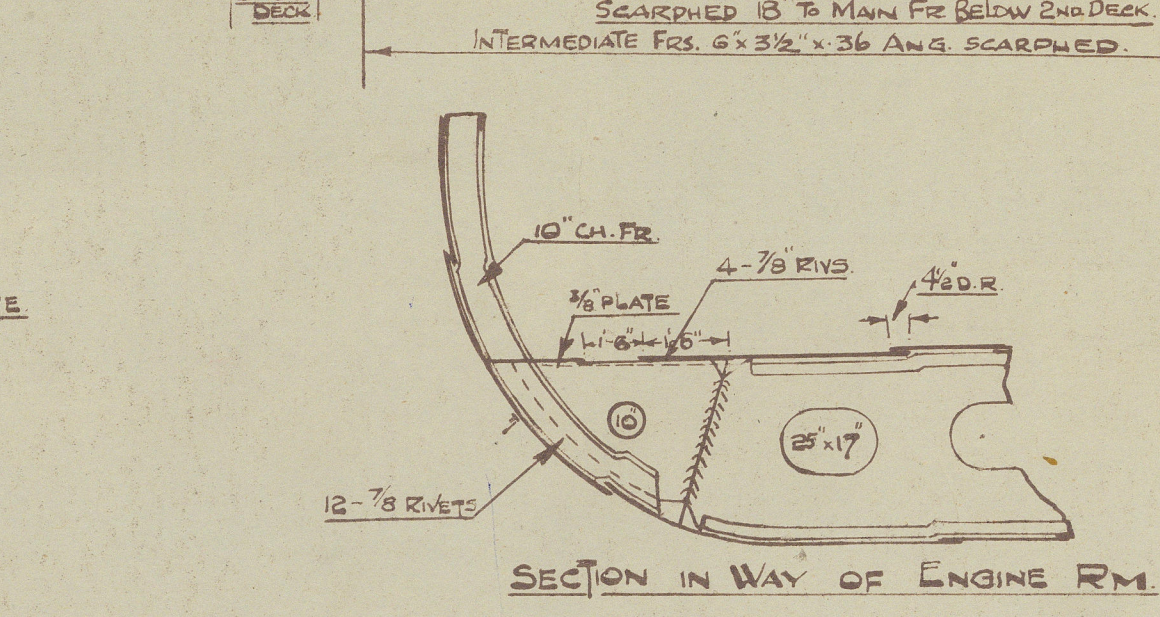
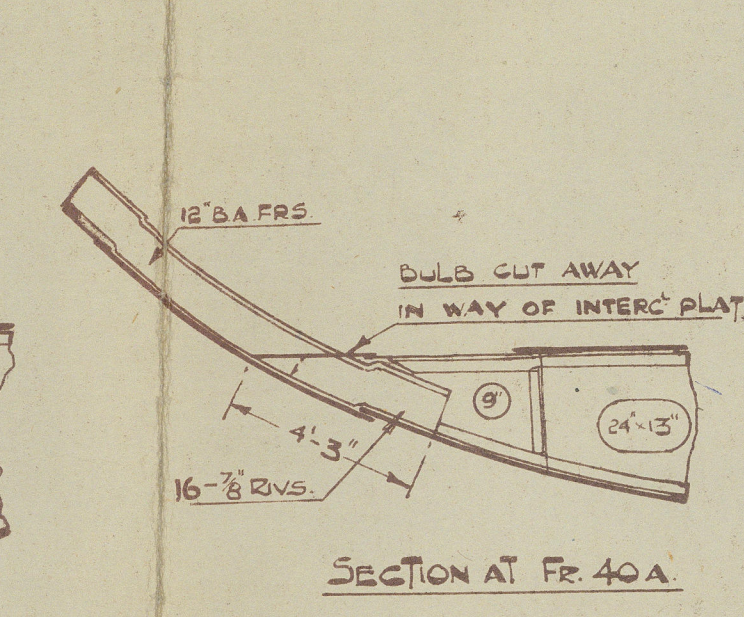
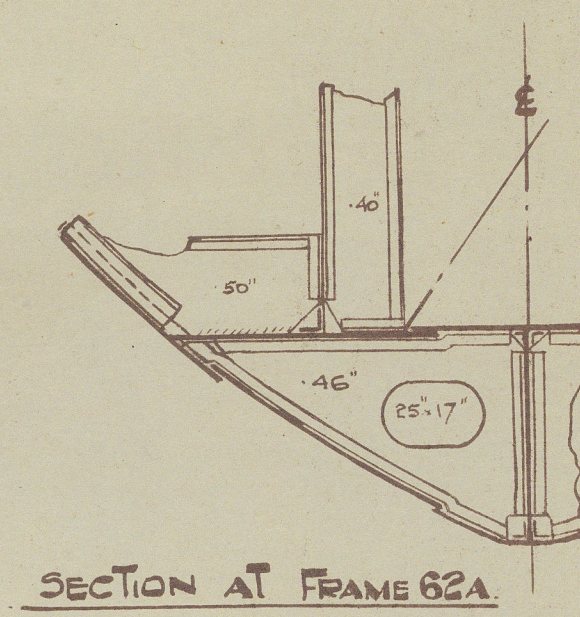
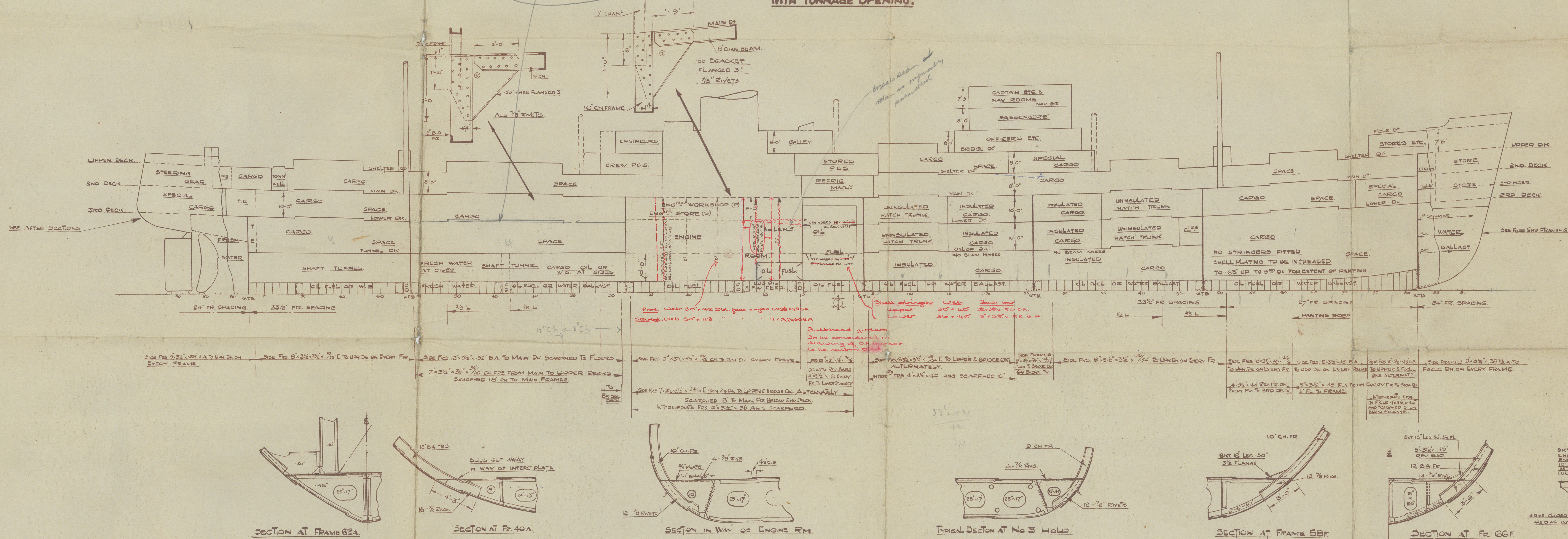
FRAMING PROFILE.

SCALE :- 1/16" = 1 FOOT.

DIMENSIONS :- 470'-0" B.P. x 66'-0" x 41'-0" MLD. TO UPPER DK.
LLOYD'S CLASS 100 A.I. WITH FREEBOARD CORRESPONDING TO THAT OF A C.S.S. VESSEL
WITH TONNAGE OPENING.

15 MAY 1945

*Sh. in 154 Hold fitted 6/50
See Low Rpt. 15-12-614*



15.5.45





HARLAND & WOLFF LTD.
BELFAST

No. 1328/9

TITLE Framing Profile

DATE APPROVED 15/5/45

No. 1328 - Bel. No. 14389 Lock Girth

No. 1329 - " " 14436 Lock Aven



014325-014334-0124



© 2021

Lloyd's Register
Foundation