

STRUCTURAL SECTIONS.

LENGTH O.A. 171'-4"
LENGTH B.P. 162'-0"
BREADTH MLD. 33'-0"
DEPTH MLD. 10'-6"
LOAD DRAUGHT 9'-3"

TO CLASS LLOYDS :- A.I.✠ OIL TANKER F.P. ABOVE 150°F.
FOR SERVICE ON THE RIVER THAMES & TO COLCHESTER."

WELDING LIST.

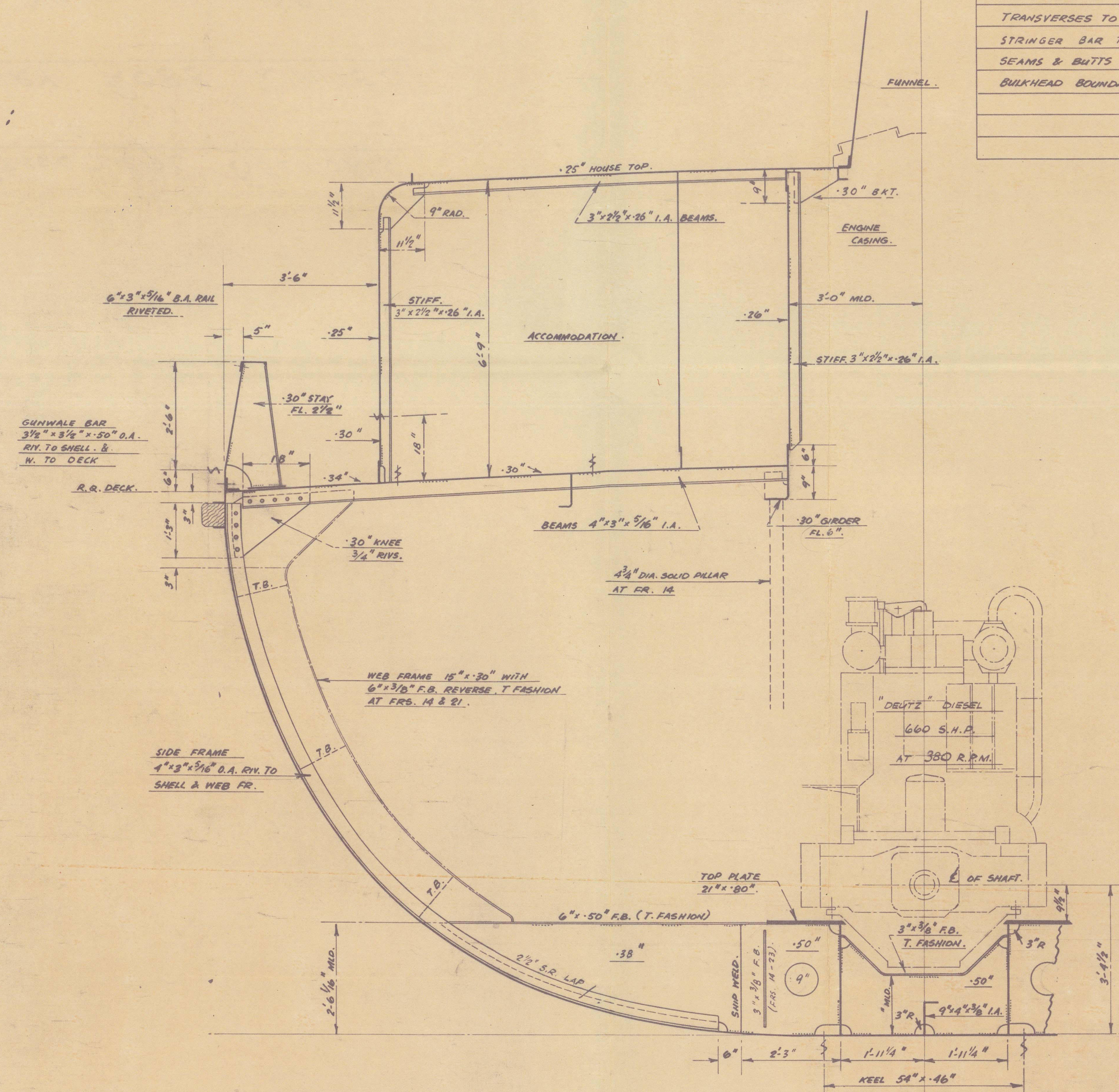
ITEM	TYPE	LEG	"D"
CENTRE GIRDER TO KEEL & TANK TOP (WHERE WT.& O.T.)	CONT. FILLET EACH SIDE	1/4"	"
" " " " " " (" NON " ")	" " " "	"	"
FLOORS TO SHELL FORO 1/2 L.	" " " "	"	"
" " " ELSEWHERE .	" " " "	"	"
" TO TANK TOP.	" " " "	"	"
" TO CENTRE GIRDER	" " " "	"	"
" " ENGINE GIRDERS	" " " "	3/8"	"
W.T. & O.T. FLOORS TO SHELL , TANK TOP.	" " " "	5/8"	"
SIDE GIRDERS TO SHELL	" " " "	1/4"	"
" " TO TANK TOP.	" " " "	"	"
TANK TOP TO SHELL	" " " "	"	"
SEAMS & BUTTS OF TANK TOP & MARGIN.	MACHINE WELD (WELD SEAMS & BUTTS SINGLE V WITH BACK RUN)		
CENTRE GIRDER BUTTS.	SINGLE V WITH BACK RUN .		
LONGITUDINALS TO TANK TOP.	DOUBLE FILLET , 6" SCALLOPS	1/4"	AS SHOWN
STRINGER BAR TO SHELL & DECKS (MIDSHIP FABRICATION)	CONTINUOUS FILLET WELD.	5/8"	
FRAMES TO SHELL (EXCEPT IN A PEAK & ENG. ROOM)	CONT. FILLET HEEL & TOE .	1/4"	
LONGITUDINALS TO SHELL	" " " " (6" RALLOPS)	5/8"	AS SHOWN
SEAMS OF BOTTOM & SIDE SHELL , SHELL BUTTS .	MACHINE WELD (WELD SEAMS & BUTTS SINGLE V WITH BACK RUN		
CONVEX TO BOTTOM SHELL .	CONT. FILLET EACH SIDE .	1/4"	
SEAMS & BUTTS ON DECKS.	(WELD SEAMS & BUTTS MACHINE WELD (SINGLE V WITH BACK RUN)		
LONGITUDINALS TO DECK .	DOUBLE FILLETS , 6" SCALLOPS.	1/4"	12" MIN
TRANSVERSES TO DECK .	CONT. FILLET EACH SIDE	1/4"	
STRINGER BAR TO DECK AT ENDS	CONT. FILLET HEEL & TOE	5/8"	
SEAMS & BUTTS OF W.T. & O.T. BULKHEADS .	MACHINE WELD .		
BULKHEAD BOUNDARY TO SHELL	CONT. FILLET EACH SIDE	1/4"	

RIVETING LIST.

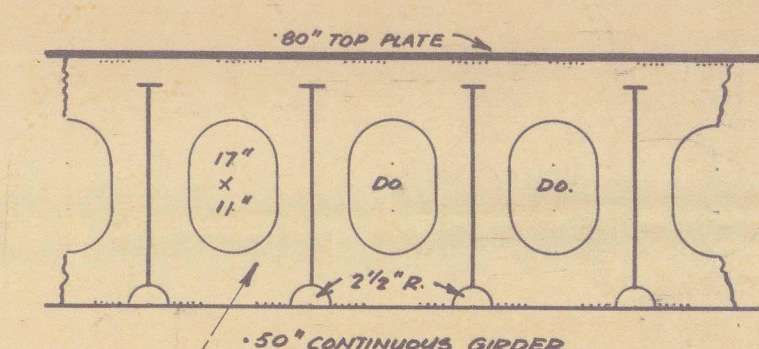
ITEM	DIA.	SAGA DIA.
FRAMES TO SWELL IN ENGINE ROOM.	3/4"	7
" " " " ART PEAK.	"	5 1/2"
STRINGER BAR TO SWELL (FORD & ART),	"	4 1/2"
B.A. RAIL TO BULKHEAD.	3/4"	7

EQUIPMENT (SPECIFIED BY OWNERS).
2 - 7 1/2 CWT. STOCKLESS BOWDER ANCHORS
10 - 15 FATHOM LENGTHS 1 1/16" STUD LINK CABLE.
80 FATHOMS 2 3/4" CIRC. F.S.W.R. TOWLINE
2 - 90 FATHOM LENGTHS 4" CIRC. MANILLA MOORING ROPE.
2 - 30 FATHOM HEAVING LINES.

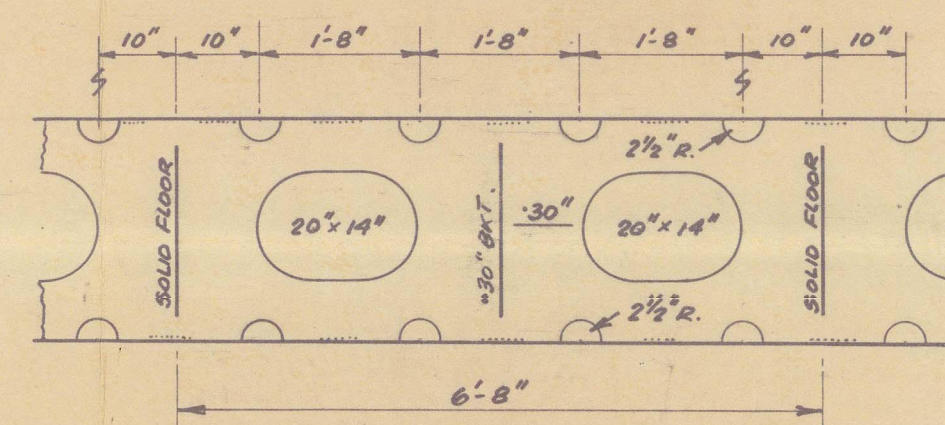
ALL SCANTLINGS SPECIFIED BY OWNERS.



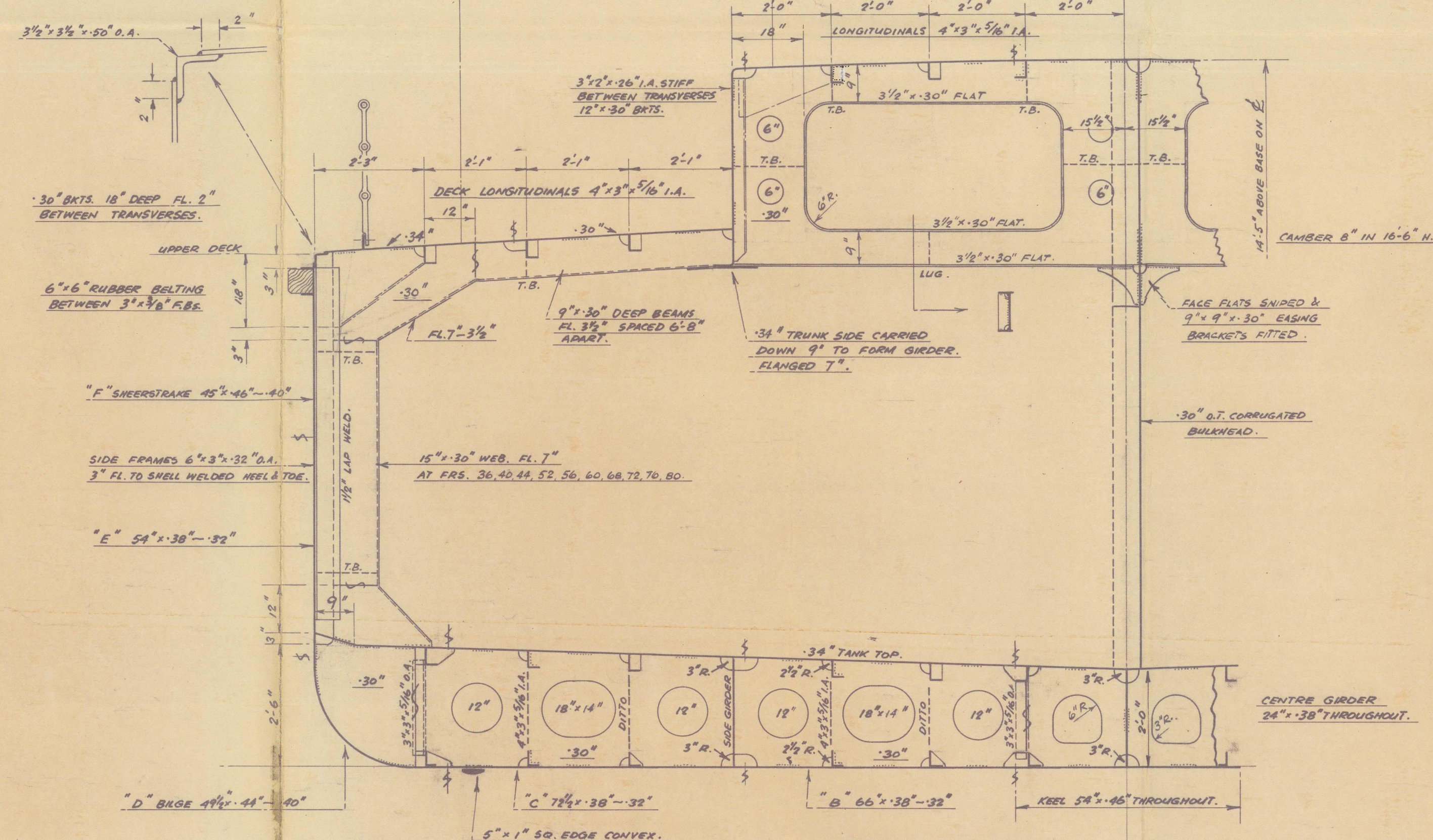
SECTION THRO' ENGINE ROOM.
LOOKING AFT.



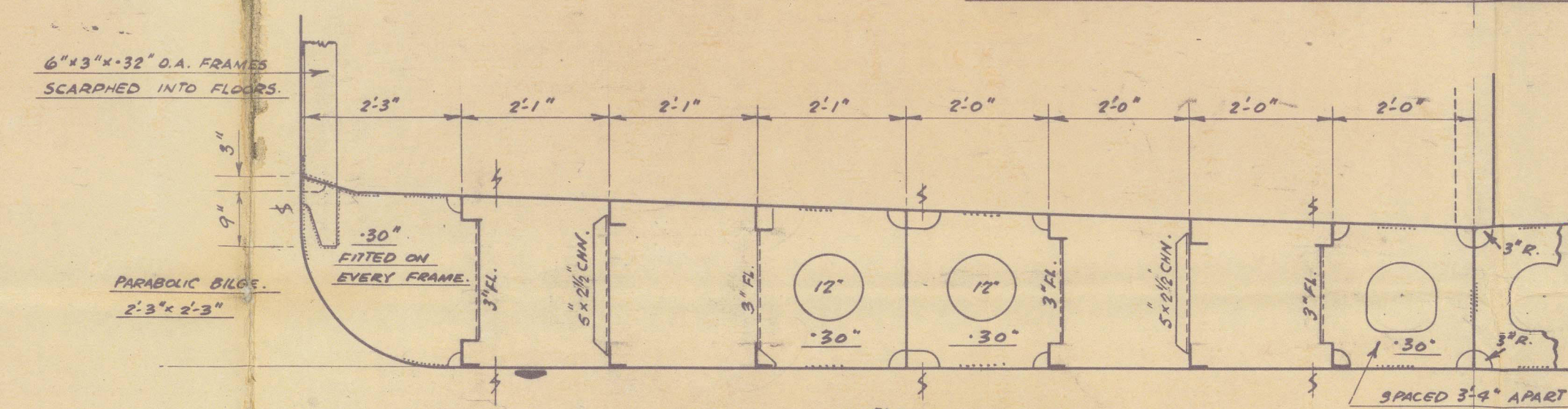
ENGINE GIRDERS.
1'-10 1/2" OFF \angle P. & S.



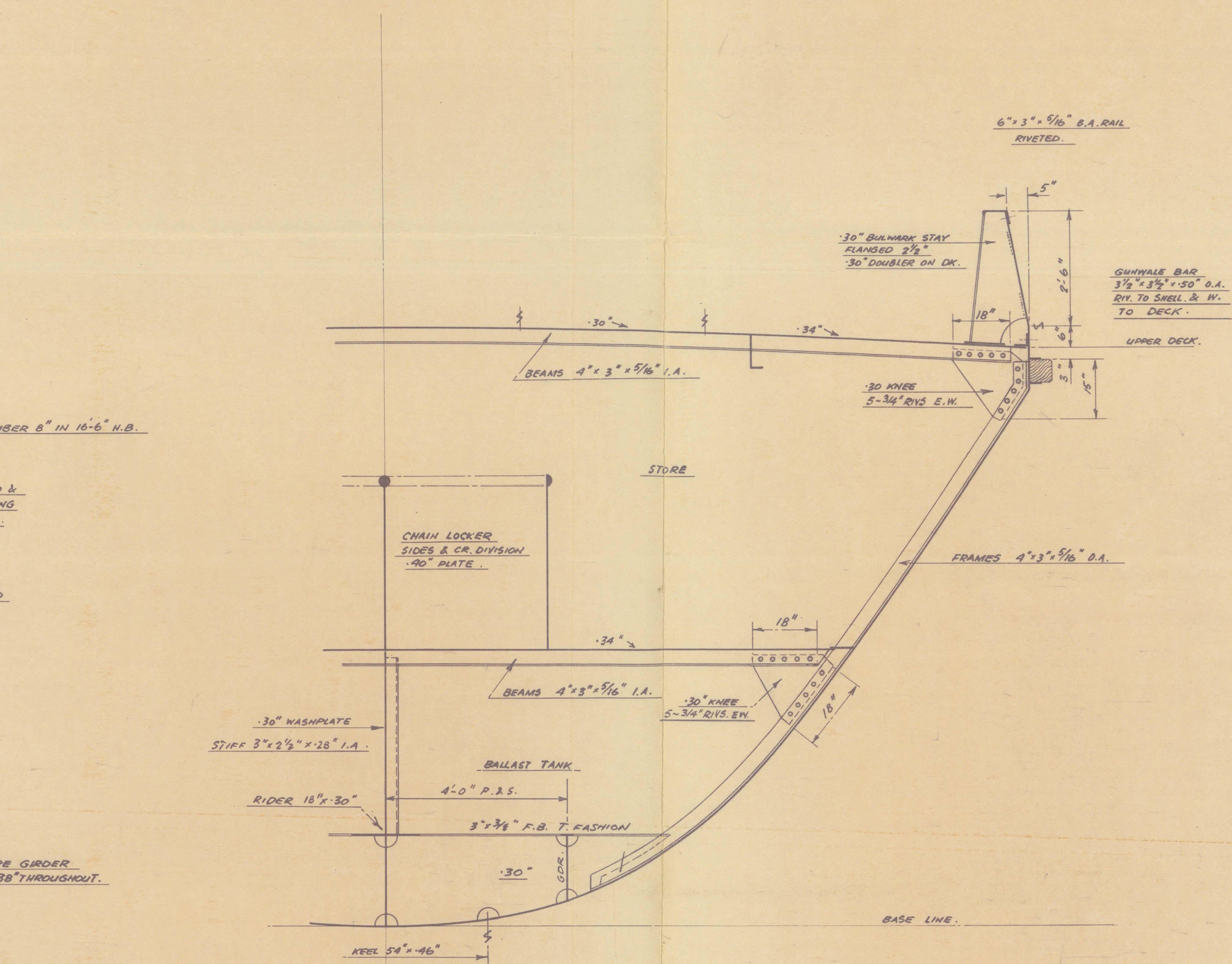
SIDE GIRDER.
8'-0" OFF E.P.&S.



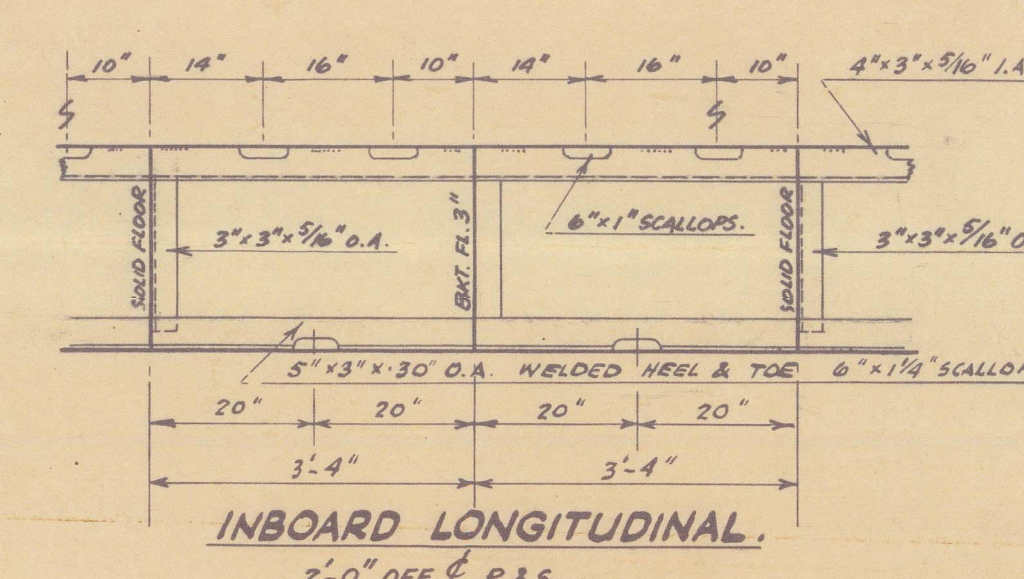
MIDSHIP SECTION
SHOWING SOLID FLOOR EVERY 4TH. FRAME.



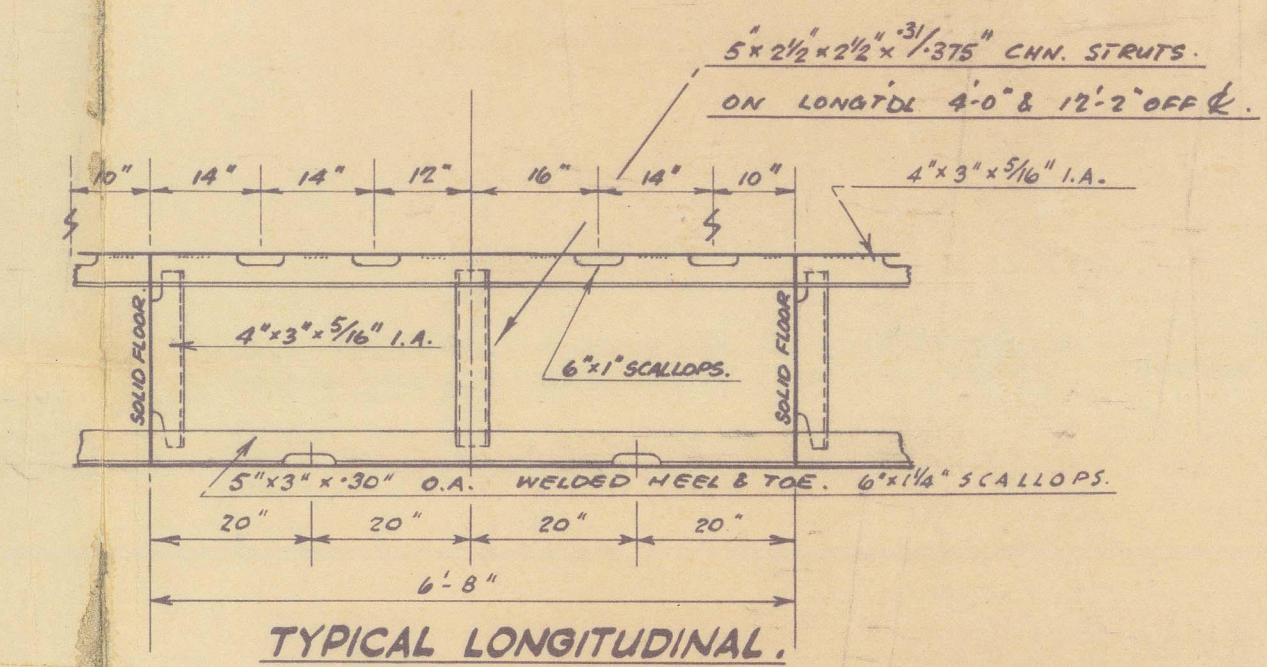
MIDSHIP SECTION
SHOWING OPEN FLOOR.



SECTION THRO. FORD. STORE & BALLAST TANK.
LOOKING FORWARD.



INBOARD LONGITUDINAL
2'-0" OFF \angle P.&S.




TYPICAL LONGITUDINAL.

2

STRUCTURAL SECTIONS.

HENRY ROBB LIMITED.

YARD No. 481.

"AS BUILT." 

M.T. 'TORO.' ★

LEITH RPT. No. 25047.

RECORDS DEPT.,
LONDON



© 2021

Lloyd's Register
Foundation 

014887 - 014898 - 0359