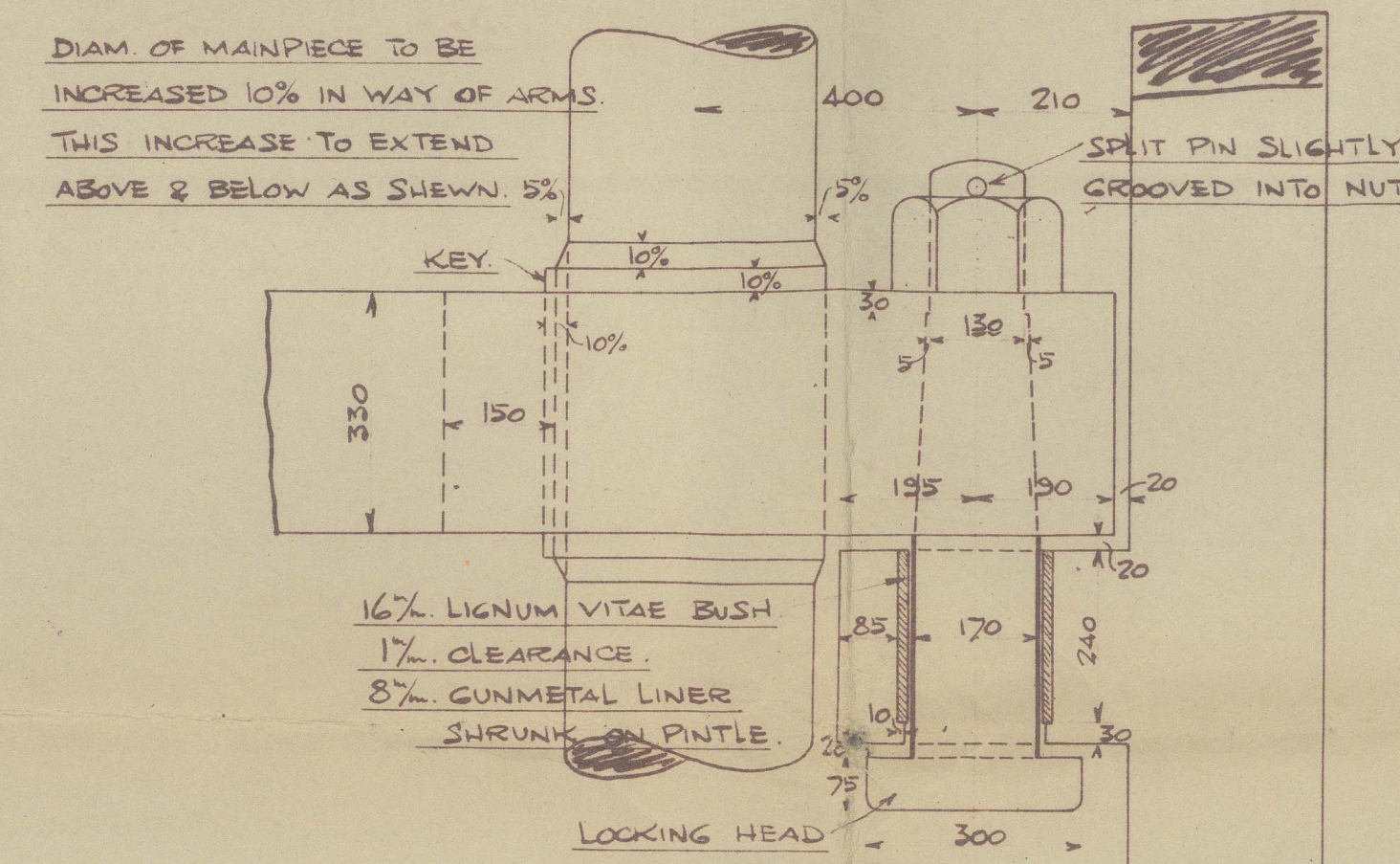
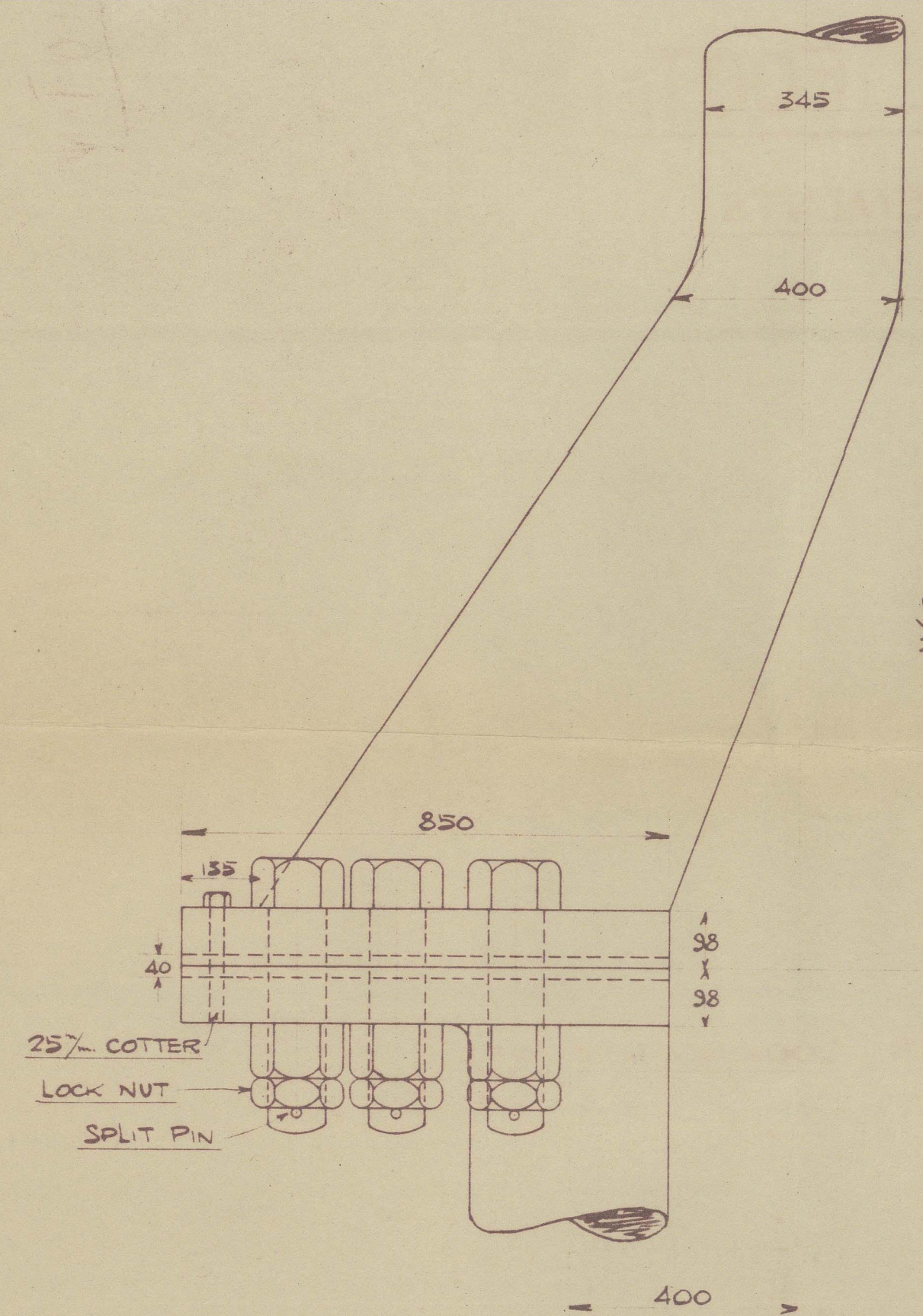


10000 TONS TANKER. FORGED IRON RUDDER FRAME.

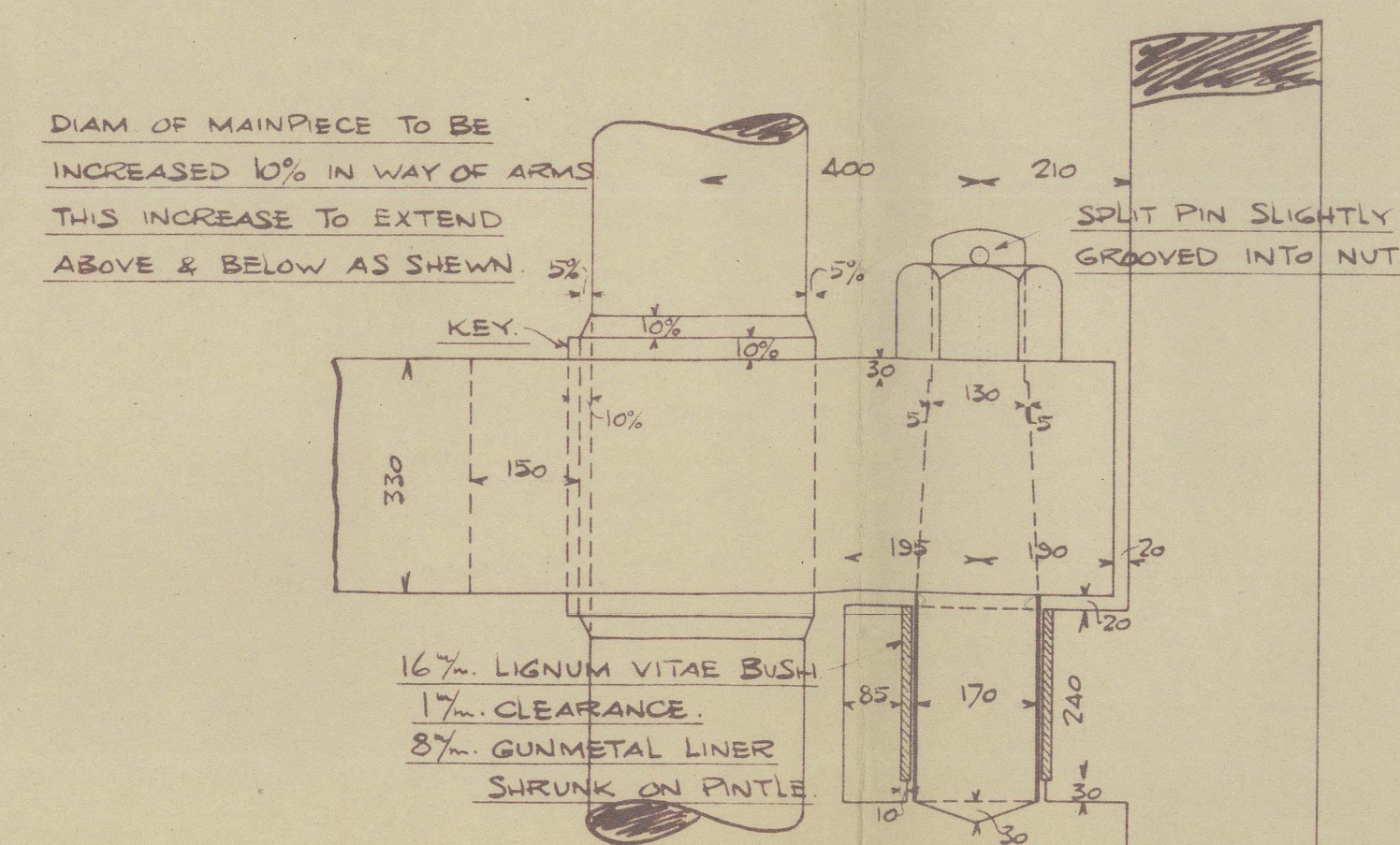
TO LLOYDS TESTS & REQUIREMENTS.

SCALE. $\frac{1}{25}$.

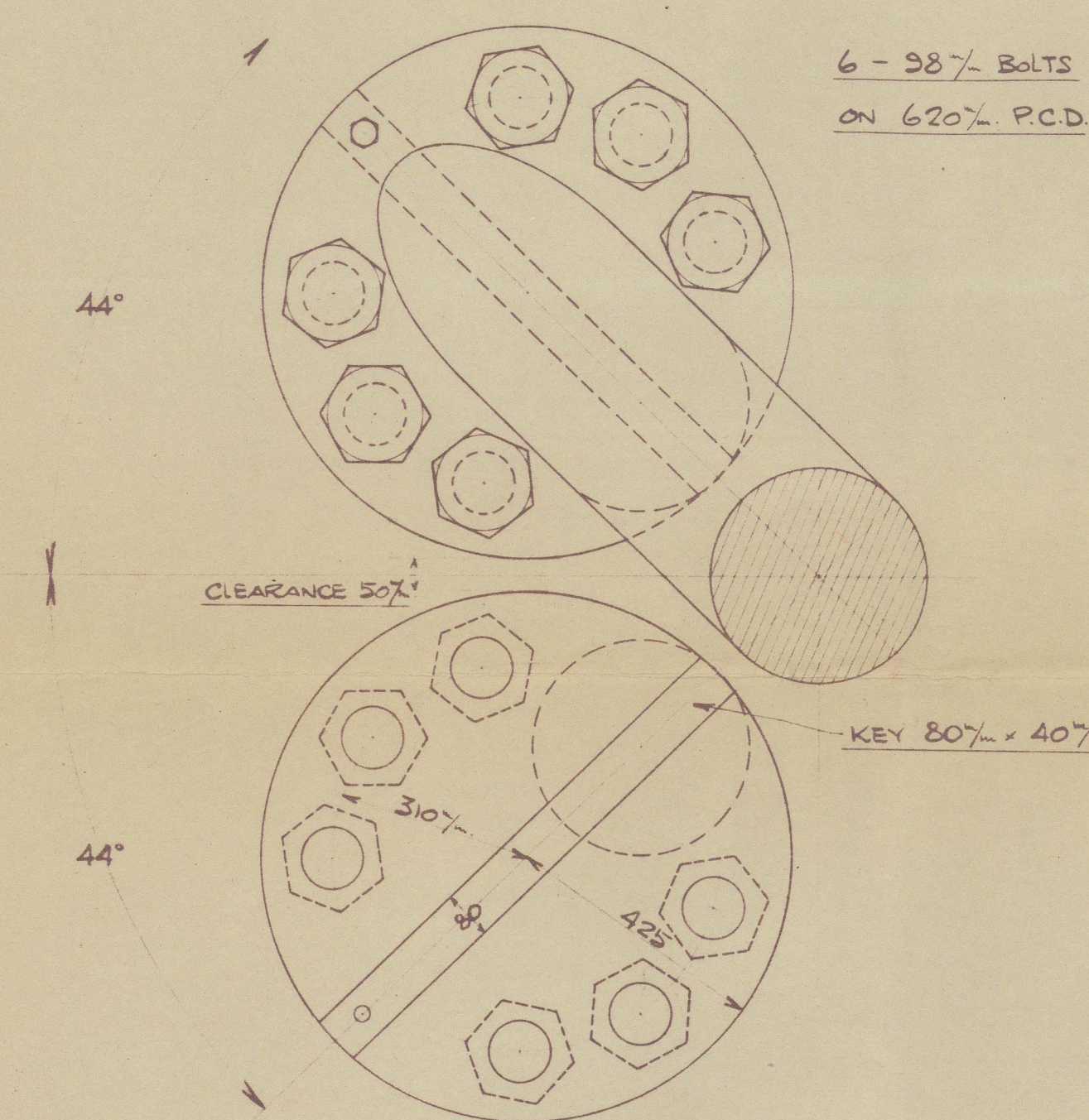
AREA OF RUDDER	= 16 SQ. METRES
CEN. OF GRAV ^y ABAFT ϕ OF PINTLES	= 1.34 METRES.
$100 \times A \times D$	= 2144
SPEED OF VESSEL ON SERVICE	= 12 KNOTS.
RUDDER HEAD	= 312 %
+ 10% FOR TANKERS	= 345 %



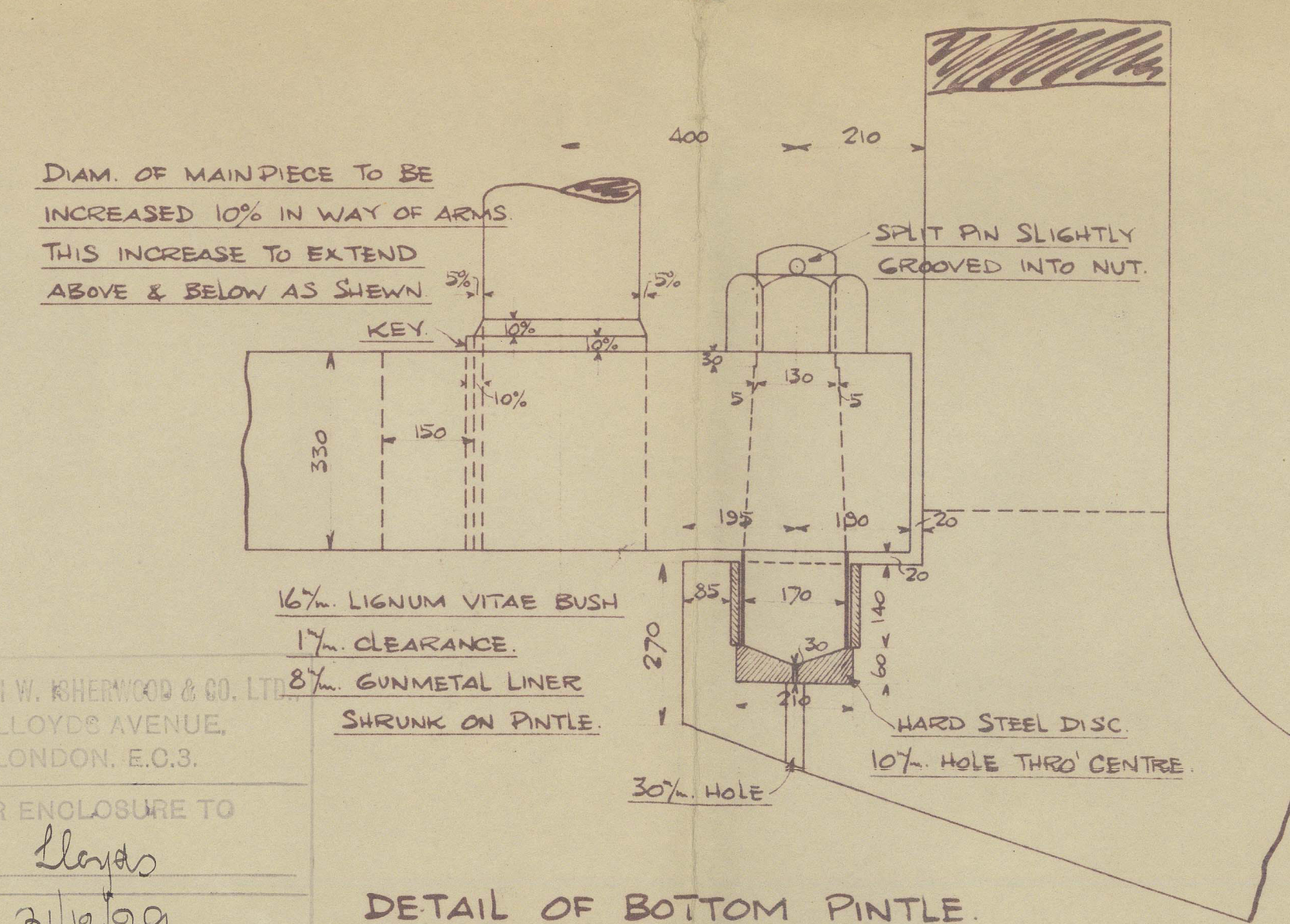
DETAIL OF TOP PINTLE.
SCALE. $\frac{1}{10}$.



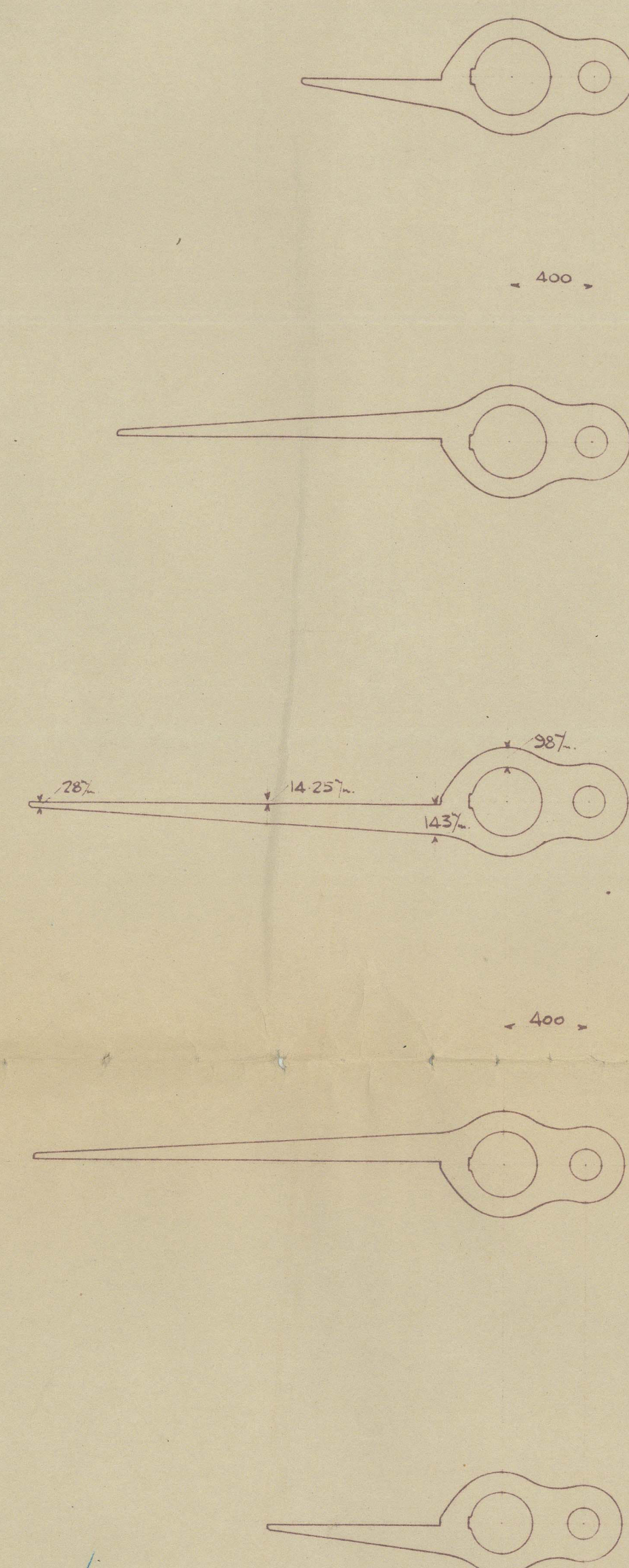
DETAIL OF INTERMEDIATE PINTLES.
SCALE. $\frac{1}{10}$.



DETAIL OF RUDDER COUPLING.
SCALE. $\frac{1}{10}$.

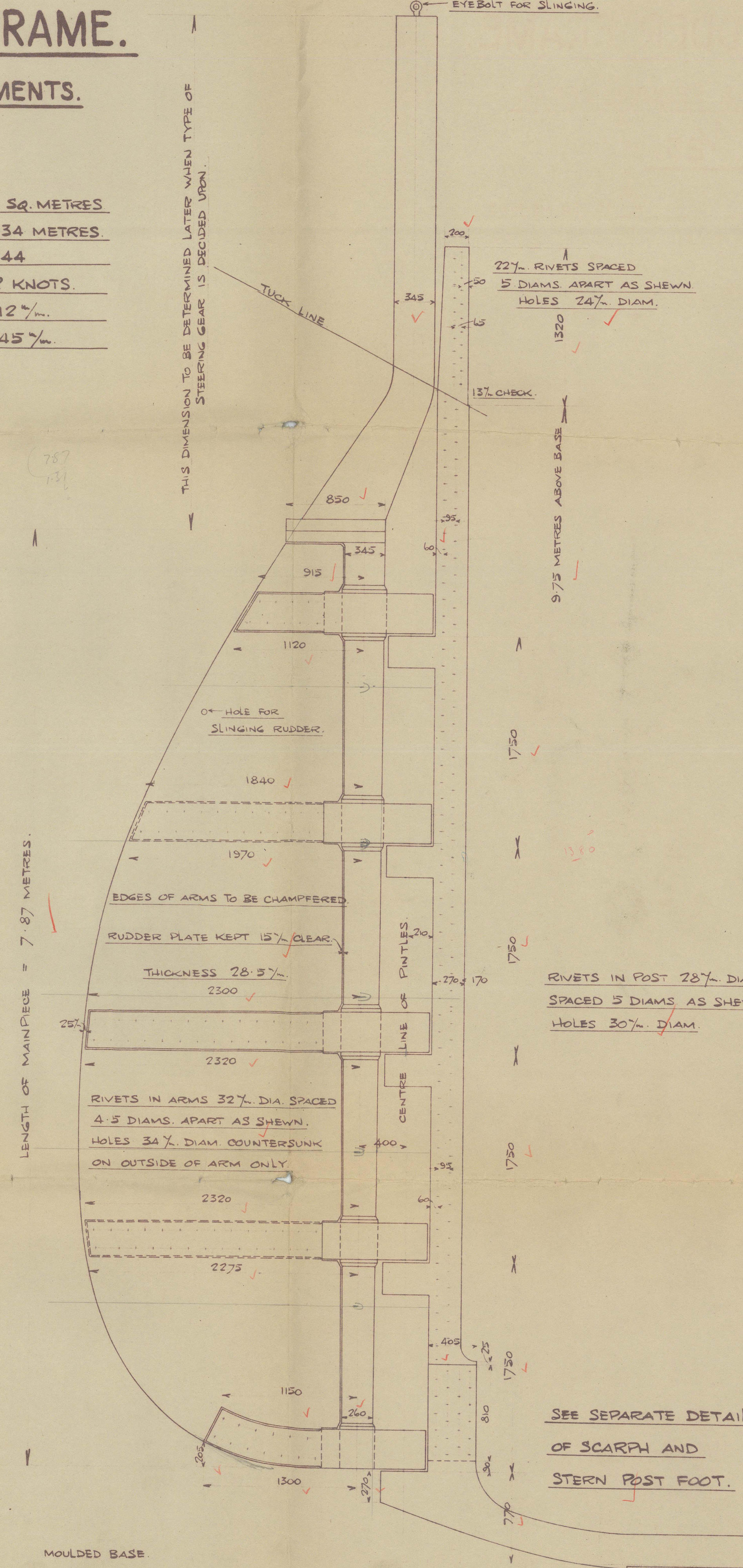


DETAIL OF BOTTOM PINTLE.
SCALE. $\frac{1}{10}$.



LENGTH OF MAINPIECE = 7.87 METRES.

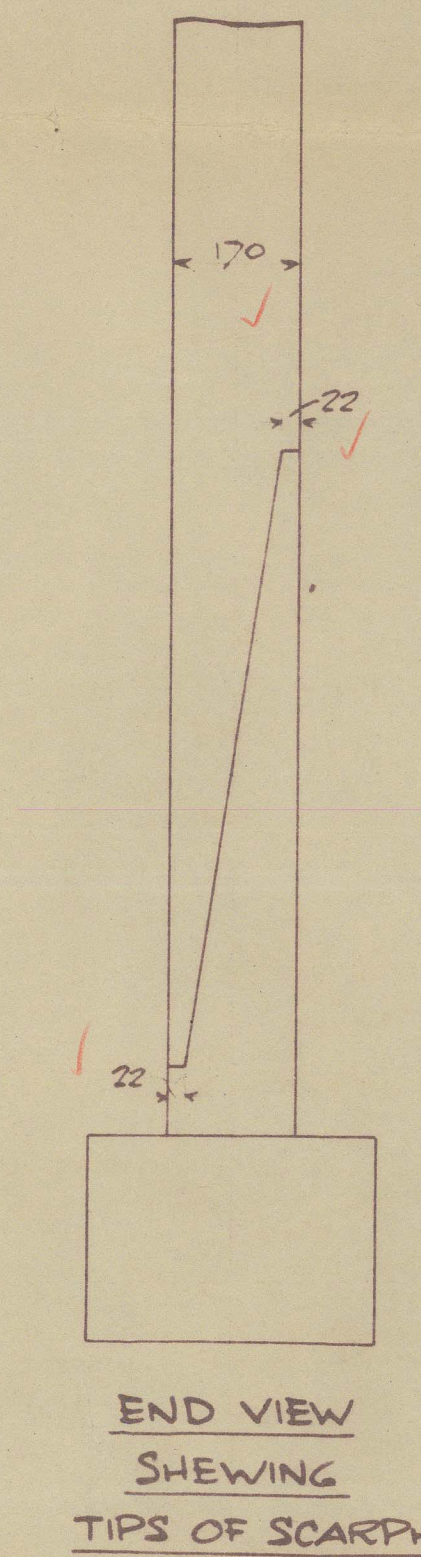
MOULDED BASE.



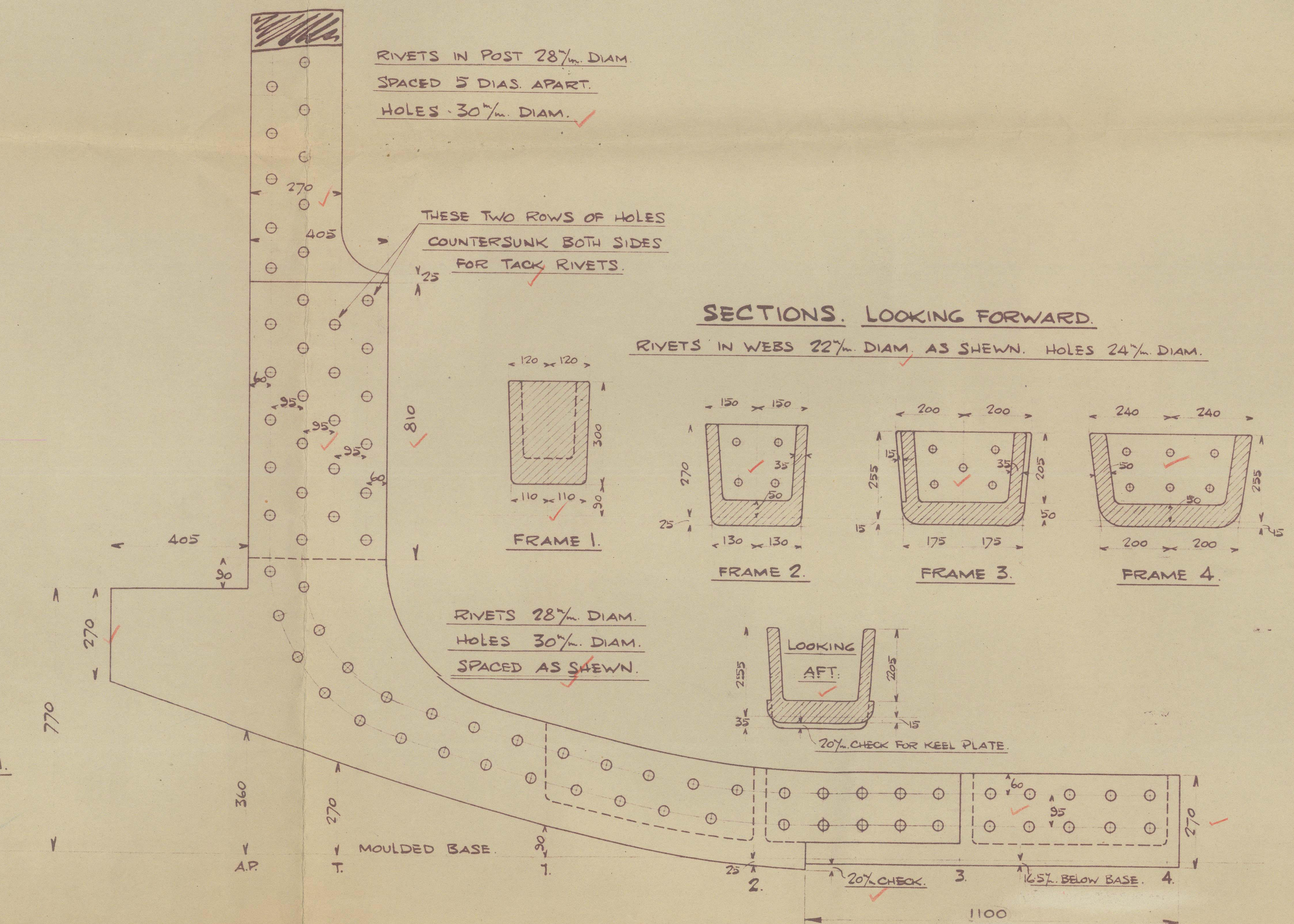
SEE SEPARATE DETAIL
OF SCARPH AND
STERN POST FOOT.

10000 TONS TANKER. FORGED IRON STERN POST. WITH CAST STEEL FOOT.

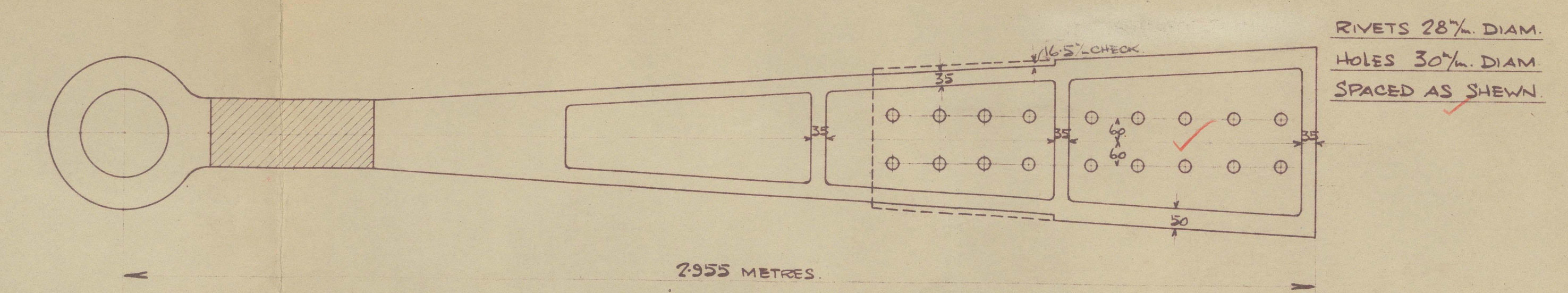
TO LLOYDS TESTS & REQUIREMENTS.



END VIEW
SHEWING
TIPS OF SCARPH.



ELEVATION OF STERN POST FOOT.
SCALE. $\frac{1}{10}$.



PLAN VIEW.

ISH No 1613.
PLAN No 7471.
28th AUG. 1929.

SIR JOSEPH W. KIERNE & CO. LTD.
4, LLOYD'S AVENUE,
LONDON, E.C.3.
FOR ENCLOSURE TO
Lloyd's
DATE 21.12.29.

10000 Ton Tanker.
Stem &
Rudder Frame.

Office

X

GEN BOX NO 24

ex. Iskakuu. 92.

M.O. Comproamas

Lloyd's



© 2021

015026-015038-0115

Lloyd's Register
Foundation