

TONNAGE MEASURES:

	GROSS	NET
SUEZ:	2998,92	1439,93
	3100,52	2103,54 (NET REGISTER TONNAGE OF STEAMER BY DANUBE RULE)

M.S. HALMAHERA
CAPACITY PLAN
M 1:200

VALMET Oy
PANSION TELAKKA
TURKU

YARD No. 242
1959

CAPACITIES OF THE HOLDS					
HOLDS	PLACE ON BOARD	FR + FR	BALES CAPACITY	GRAIN CAPACITY	
			M ³ CU. FT.	M ³ CU. FT.	
I ₁ -I ₂	MAIN DECK	75-123	766,0	27052,0	853,8
I ₂	TWEEN DECK	102-128	442,8	15637,9	499,0
I ₃	TANK TOP	102-128	503,9	17719,5	561,3
II ₂	TWEEN DECK	70-97	575,8	20334,9	640,9
II ₃	TANK TOP	70-102	715,1	25254,5	796,4
III ₁	MAIN DECK	48-42	406,1	14341,8	455,0
III ₂	TWEEN DECK	8-42	726,4	25653,5	809,2
III ₃	TANK TOP	15-42	346,7	12244,4	418,3
MAILROOM	TWEEN DECK	97-102	47,5	1677,5	58,8
SPECIAL CARGO	"	97-102	48,5	1712,8	58,8
TOTAL:			4578,8	161704,7	5151,5

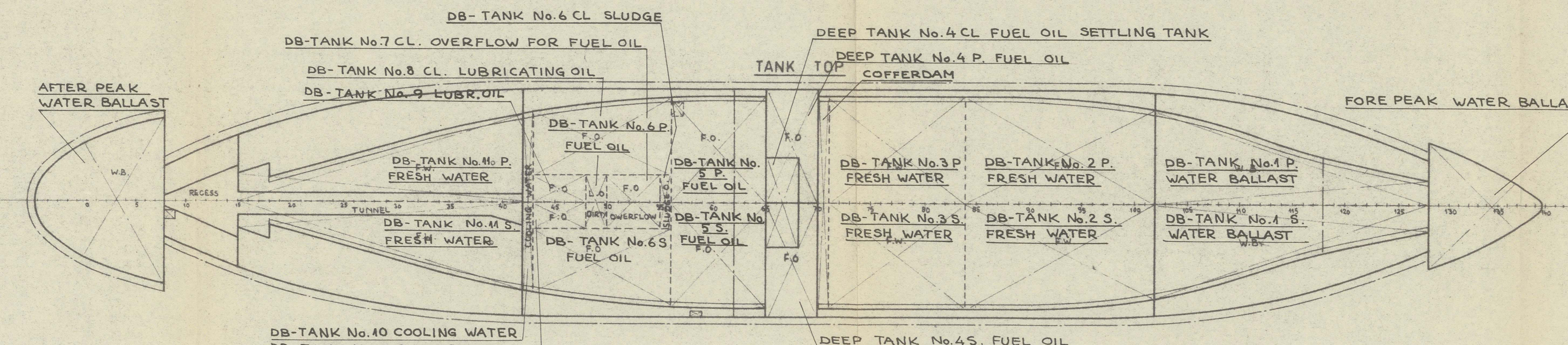
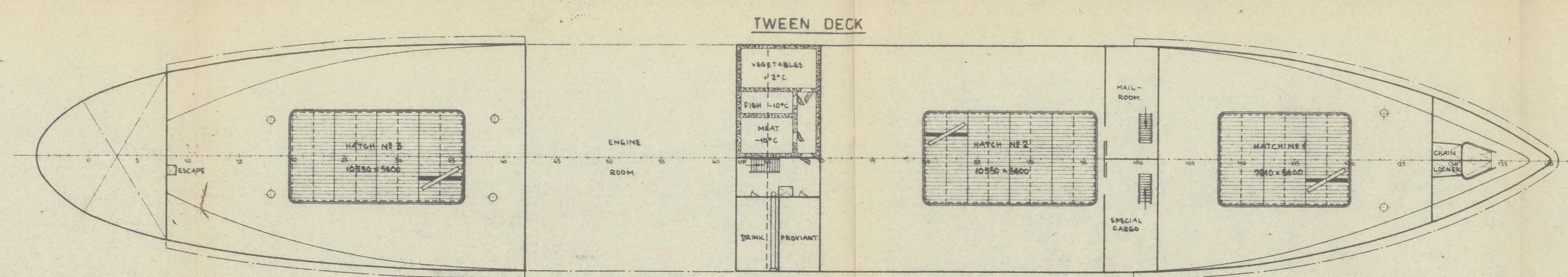
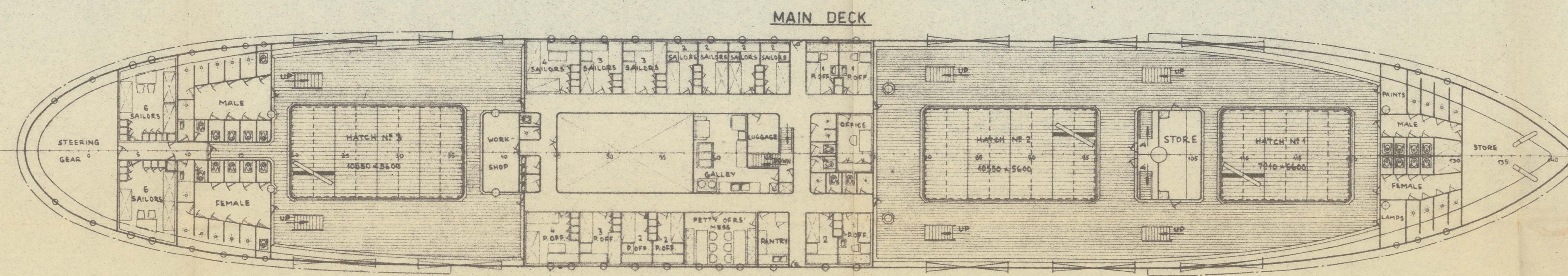
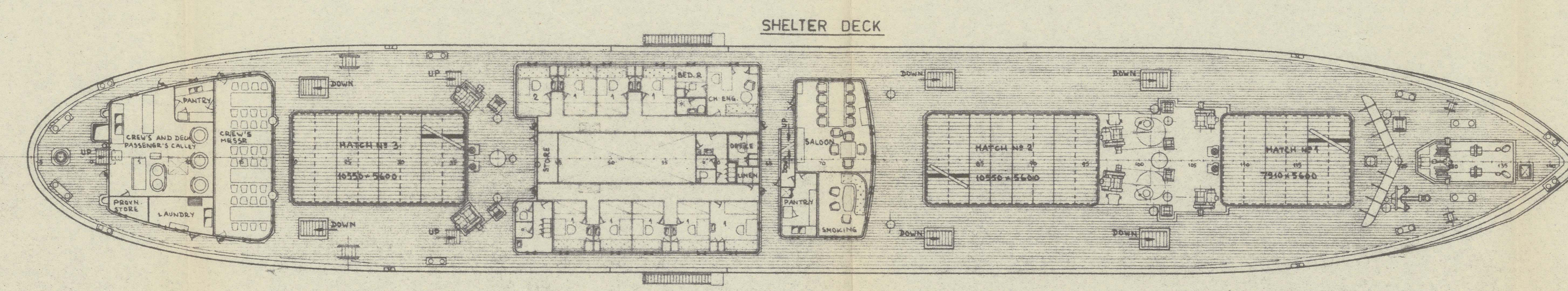
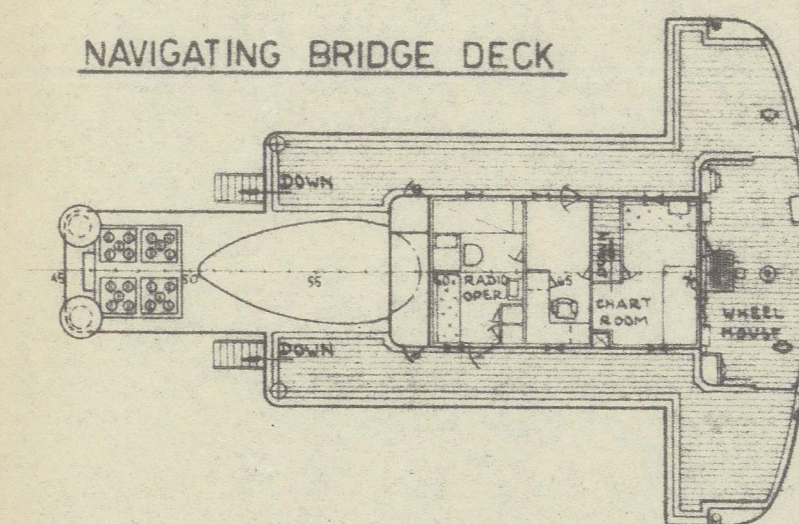
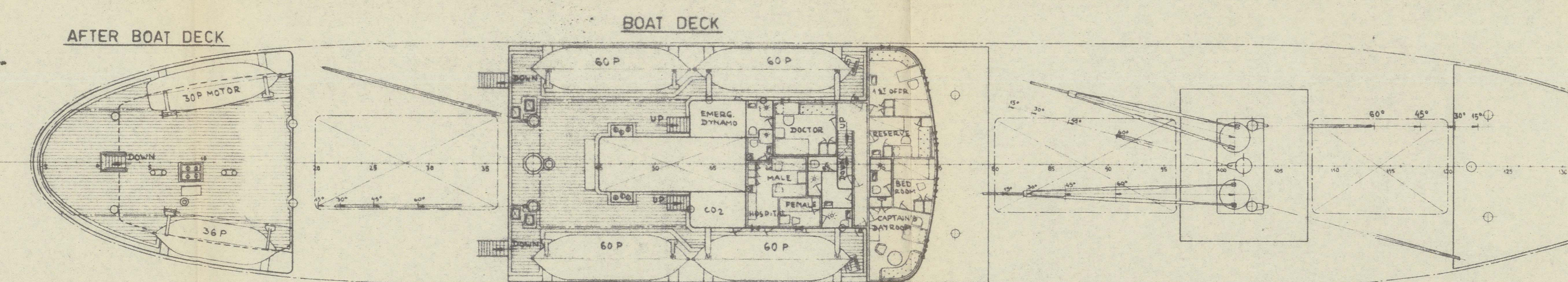
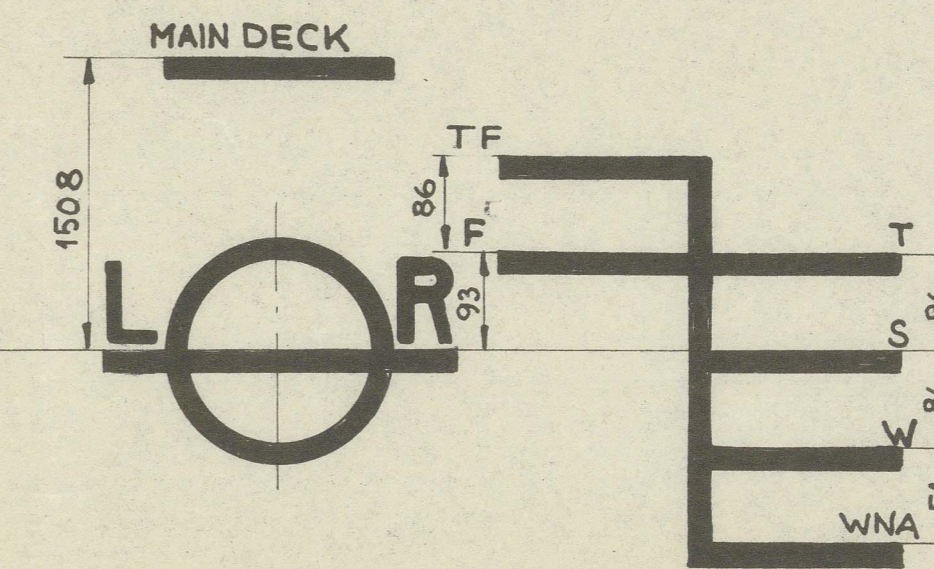
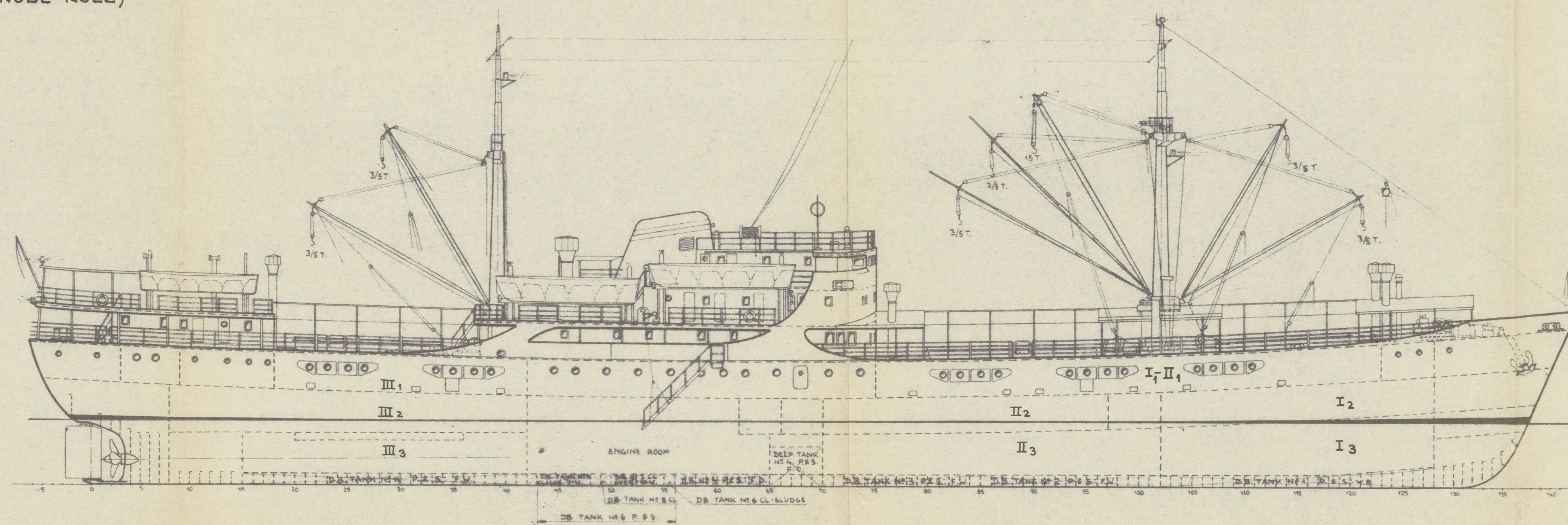
PROVISION STORE				
STORE	PLACE ON BOARD	FR + FR	M ³	CU. FT.
VEGETABLES	TWEEN DECK	62-70	21,0	741,6
FISH	"	62-67	9,3	328,4
MEAT	"	62-67	13,5	476,8
HANDLING ROOM	"	67-70	10,0	353,2
DRINK	"	62-66	31,0	1094,8
PROVANT	"	66-70	31,0	1094,8
TOTAL:			115,8	4089,6

FUEL OIL ($\gamma = 0,87$)				
	PLACE ON BOARD	FR + FR	M ³	T/1000 KG
DEEP TANK N ^o 4 CL	DOUBLE BOTTOM	65-68	19,1	16,6
" N ^o 4 P	"	65-70	49,0	42,6
" N ^o 4 S	"	65-70	49,0	42,6
DB TANK N ^o 5 P	"	56-65	29,1	25,3
" N ^o 5 S	"	56-65	29,1	25,3
" N ^o 6 CL (SLUDGE)	"	55-56	1,8	1,6
" N ^o 6 P	"	43-56	28,1	24,4
" N ^o 6 S	"	43-56	28,1	24,4
" N ^o 7 CL	"	50-55	8,8	7,7
DAILY SERV. TANK P.	ENGINE ROOM	54-58	3,3	2,9
" S	"	53-58	3,3	2,9
GAS OIL TANK P.	"	53-55	1,0	0,9
TOTAL:			249,7	217,2

LUBRICATING OIL ($\gamma = 0,90$)				
	PLACE ON BOARD	FR + FR	M ³	T/1000 KG
DB-TANK N ^o 8 CL	DOUBLE BOTTOM	48-50	3,5	3,1
" N ^o 9 P	"	43-48	4,4	4,0
" N ^o 9 S	"	43-48	4,4	4,0
STORAG TANK S	ENGINE ROOM	48-51	3,0	2,7
SETTLING TANK	"	64-65	1,7	1,5
TOTAL:			17,0	15,3

FRESH WATER ($\gamma = 1,0$)				
	PLACE ON BOARD	FR + FR	M ³	T/1000 KG
DB-TANK N ^o 2 P	DOUBLE BOTTOM	84-102	58,0	58,0
" N ^o 2 S	"	84-102	58,0	58,0
" N ^o 3 P	"	71-84	43,4	43,4
" N ^o 3 S	"	71-84	43,4	43,4
" N ^o 4 P	"	15-42	44,4	44,4
" N ^o 4 S	"	15-42	44,4	44,4
DB-TANK N ^o 10 (COOLING WATER)	"	42-43	5,5	5,5
COOL. WATER EXP. TANK	ENGINE ROOM	51-53	1,5	1,5
TOTAL:			298,6	298,6

WATER BALLAST ($\gamma = 1,025$)				
	PLACE ON BOARD	FR + FR	M ³	T/1000 KG
FORE PEAK			99,1	101,6
DB-TANK N ^o 1 P	DOUBLE BOTTOM	102-128	49,9	51,1
" N ^o 1 S	"	102-128	49,9	51,1
AFTER PEAK			123,9	127,0
TOTAL:			322,8	330,8



DEADWEIGHT SCALE					
DRAUGHT	DEADWEIGHT		TONS PER		DISPLACEMENT
	IN SW	IN FW	IN SW	IN FW	
METRE	FOOT	T/1000 KG	T/1000 KG	T/1000 KG	T/1000 KG
15	49	2500	11,0	4000	
14	46	2500	10,8	4000	
13	43	2000	10,6	3000	
12	40	2000	10,4	3000	
11	37	1500	10,2	2000	
10	33	1000	9,8	1000	
9	30	1000	9,6	1000	
8	27	500	9,4	1000	
7	23	0			
6	20	0			
5	17	0			
4	13	0			

CLASS: LLOYD'S REGISTER 100 A1

SIGNAL LETTERS: PKSX
PORT OF REGISTRY: DJAKARTA

MAIN DIMENSIONS:

LENGTH OVER ALL	96,90 M
LENGTH BETWEEN PP	90,00 M
BREADTH MOULDED	14,40 M
DEPTH TO TWEEN DECK	3,35 M
DEPTH TO MAIN DECK	5,65 M
DEPTH TO SHELTER DECK	7,95 M
SUMMER DRAUGHT IN SEA WATER	4,15 M
DEADWEIGHT	2380 T

MAIN ENGINE:

1x8 CYL. SINGLE-ACTING FOURSTROKE DIESELMOTOR, TURBOCHARGED
TYPE: M.A.N. G8V 40/60 m.a.
CYLINDER Ø: 400 MM; STROKE 600 MM.
MACHINERY OUTPUT: 1500 HP BY SPEED 275 R.P.M. AND BY 45 °C

HALMAHERA

VALMET Oy	Pansio Telakka	01A5
2200 DWT PASSENGER-CARGO MOTORSHIP		

CLASS:

LOYD'S REGISTER

SIGNAL LETTERS: PKSX

PORT OF REGISTRY: DAKAR

MAIN DIMENSION

LENGTH OVER ALL

LENGTH BETWEEN BP

BREADTH MOULDED

DEPTH TO TWEEN DECK

DEPTH TO MAIN DECK

DEPTH TO UPPER DECK

DEPTH TO LOWER DECK

DEPTH TO SEA WATER

DEPTH TO LIGHT

DEPTH TO MAIN ENGINE

DEPTH TO MAIN ENGINE

DEPTH TO MAIN ENGINE

DEPTH TO MAIN ENGINE

DEPTH TO MAIN ENGINE

DEPTH TO MAIN ENGINE

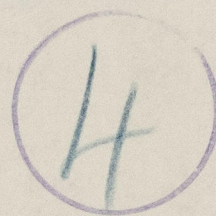
DEPTH TO MAIN ENGINE

DEPTH TO MAIN ENGINE

DEPTH TO MAIN ENGINE

DEPTH TO MAIN ENGINE

RECORDS DEPT.
LONDON.

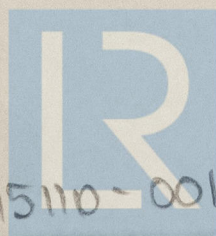


"WATABUHA" ★

Ex.

"HALMAHERA"

Capacity Plan



© 2021

Lloyd's Register
Foundation

015102-015110-0019