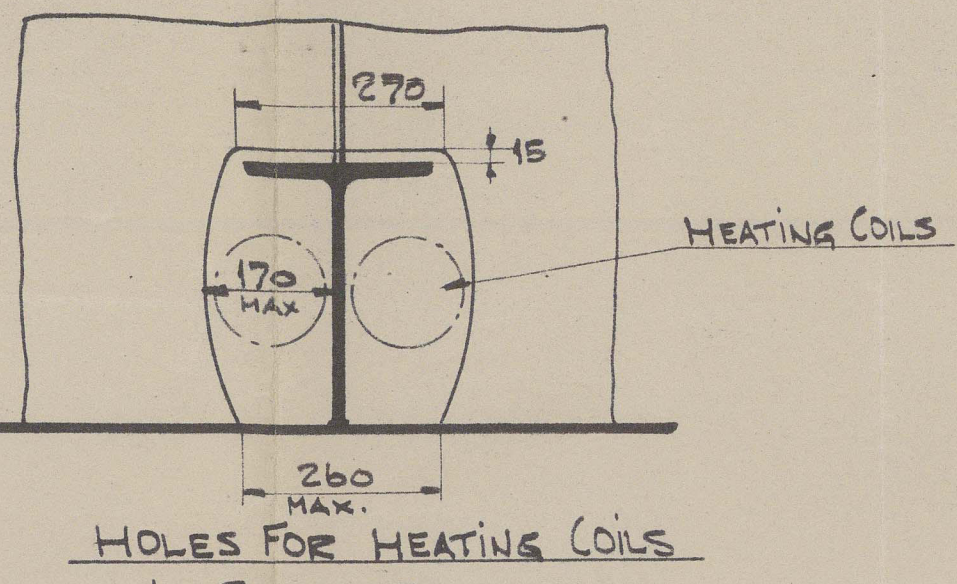


WELDING OF BOTTOM LONGITUDINALS 15-24.



2 BOWER ANCHORS STOCKLESS 81.5 CWT. EACH COLLECT WEIGHT
1 " " " 81.5 " 244.5 CWT.

1 STREAM ANCHOR 250 EX-STOCK

300 FATHOMS 2 7/8" STUD CHAIN CABLES MIN WEIGHT 987 CWT. OR 2 3/4"
120 " 4 3/4" STEELWIRE [6'12"] SPECIAL FLEXIBLE STEEL WIRE ROPES EQUIV.
130 " 5 1/2" " " [6'24"] " " " "
2-140 " 2 3/4" " " [6'12"] FLEXIBLE STEEL WIRE ROPES, HANVERS
2-160 " 2 3/4" " " [6'12"] " " " " HARPS

1-6-39

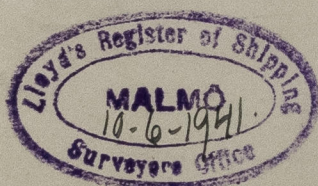
Mahrö.

Kockmans Mek. Verkstads A. B.

N/T 226 "Mahröhm"

Midships sections of vessel as built.

(Mahrö F.E. Report No. 2001)



© 2021

Lloyd's Register
Foundation

015139-015154-0023