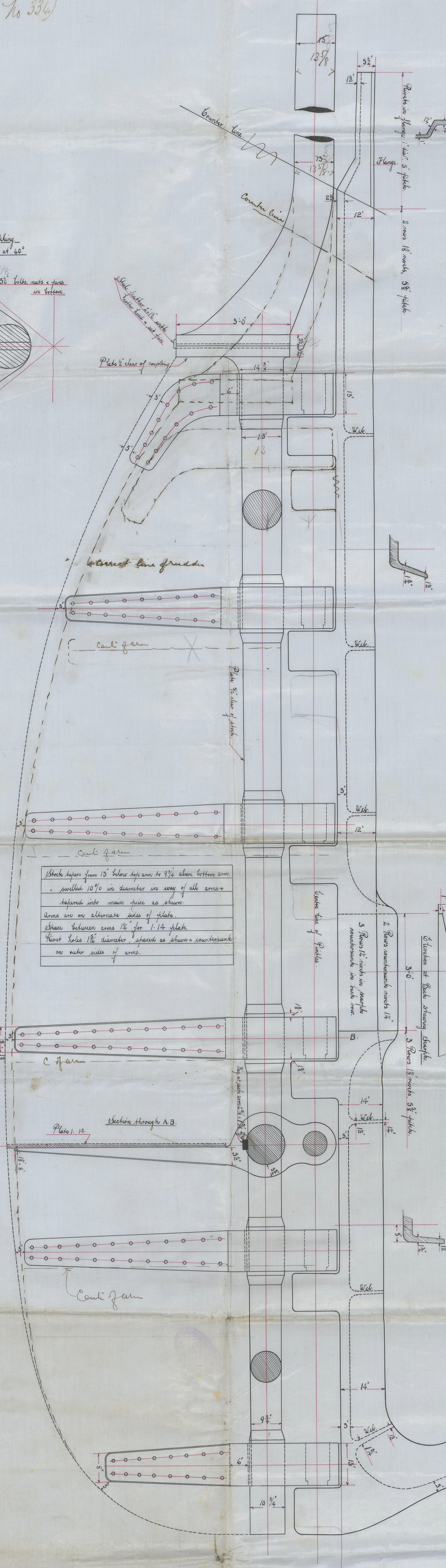
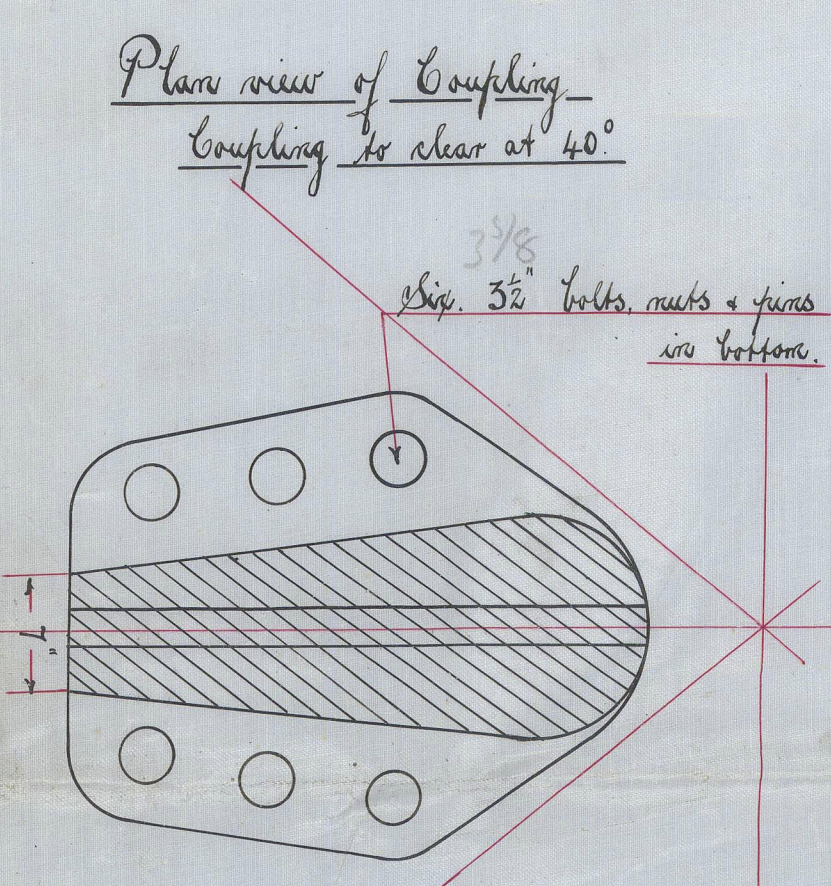


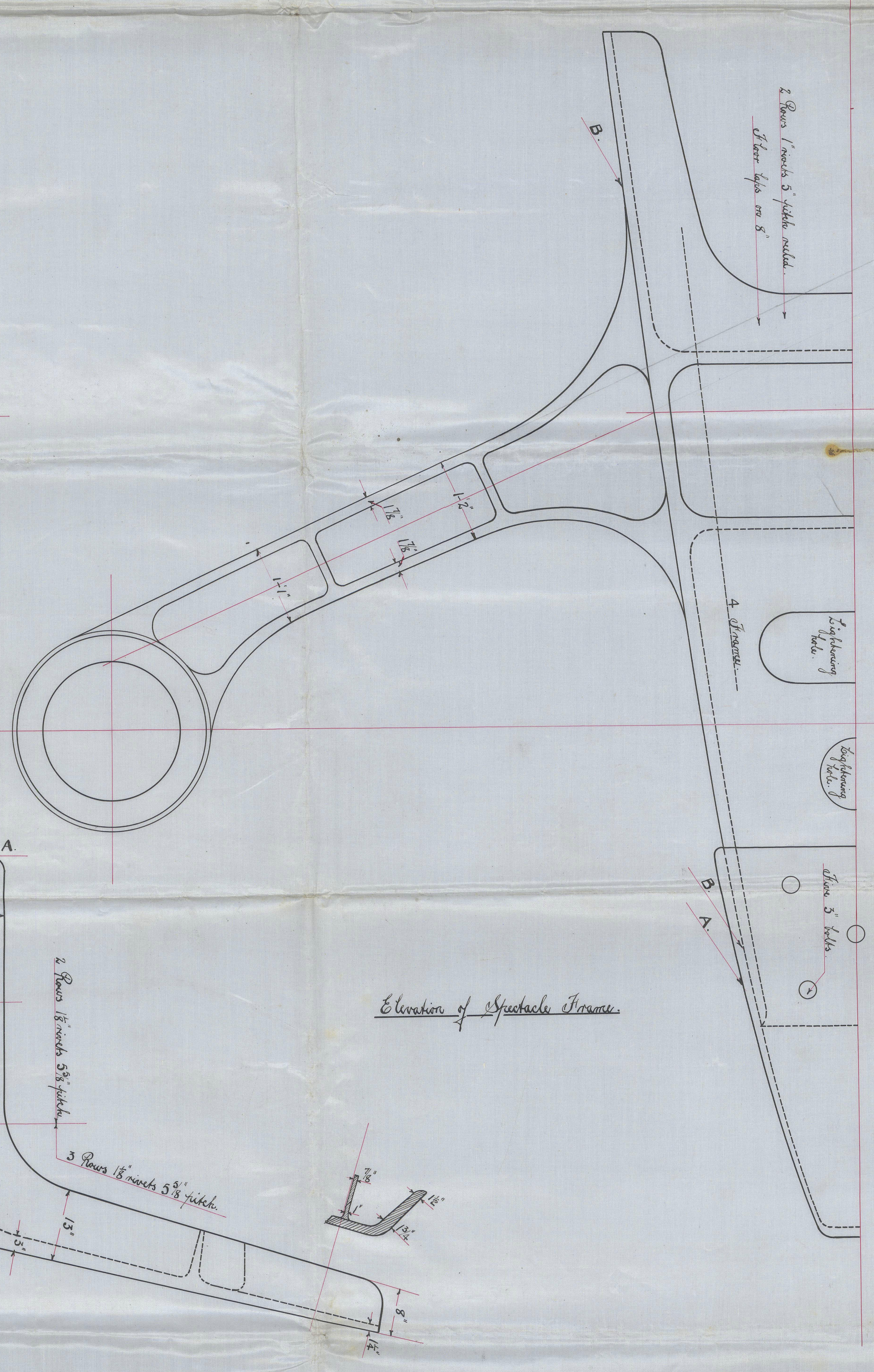
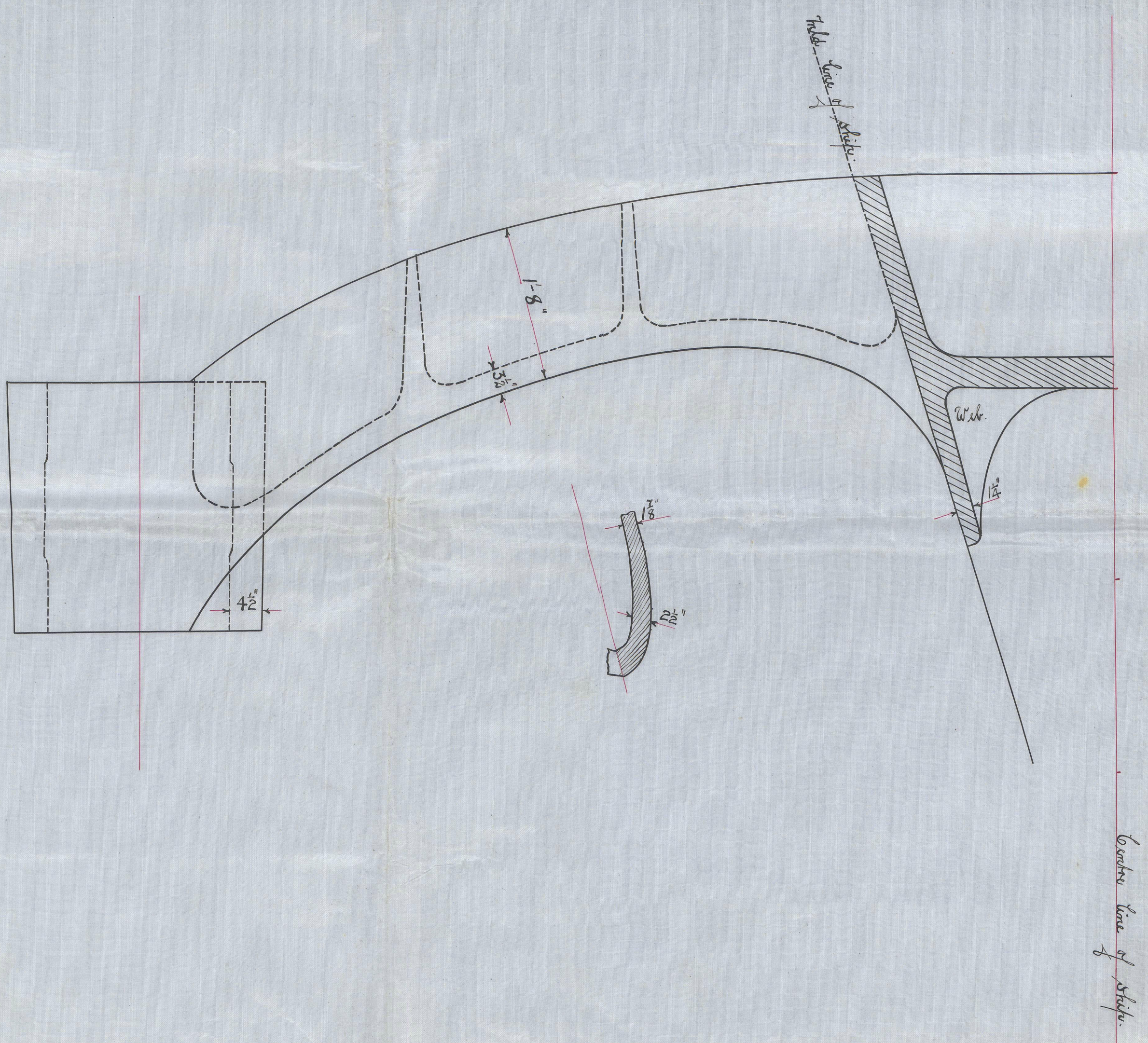
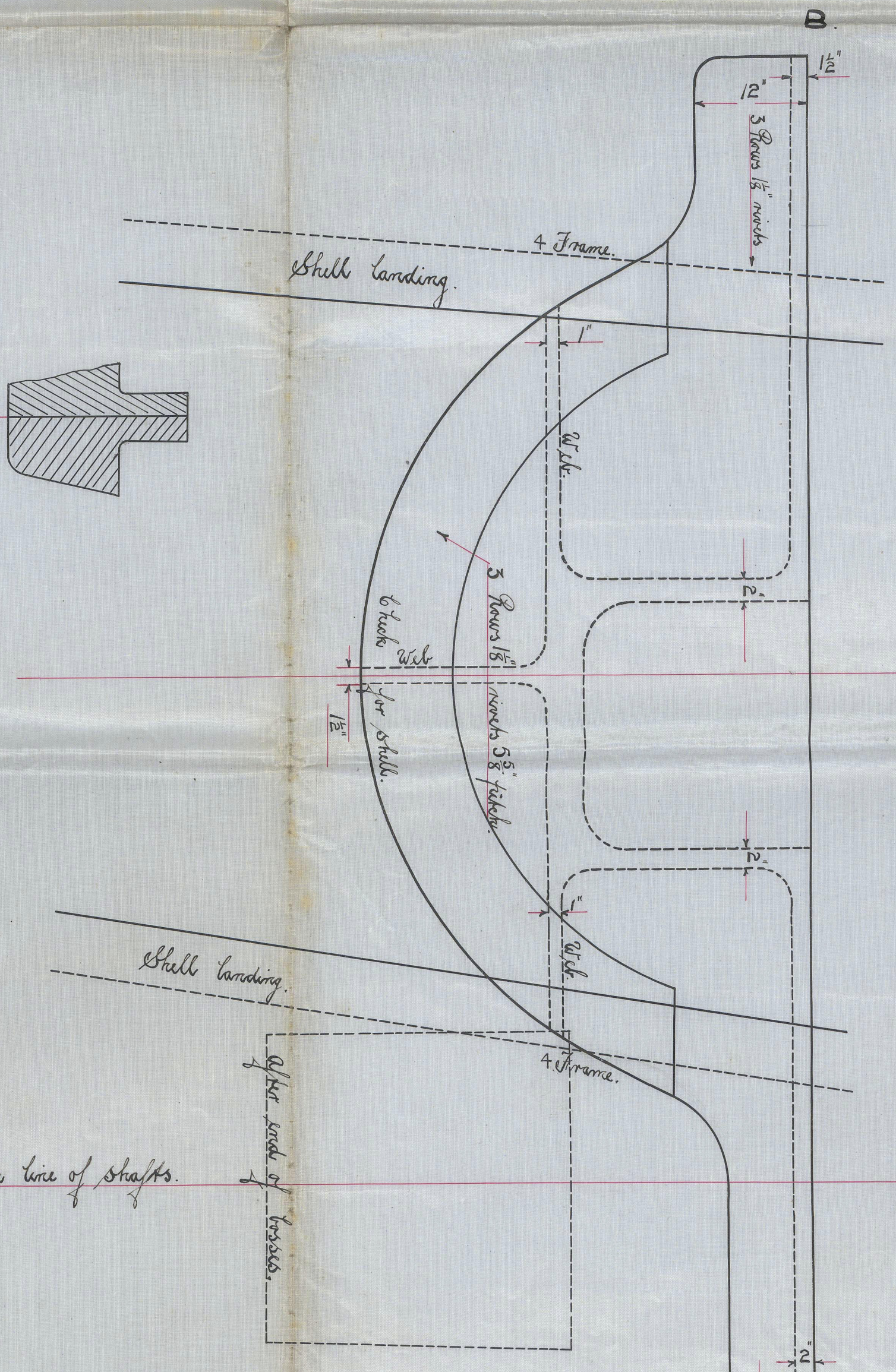
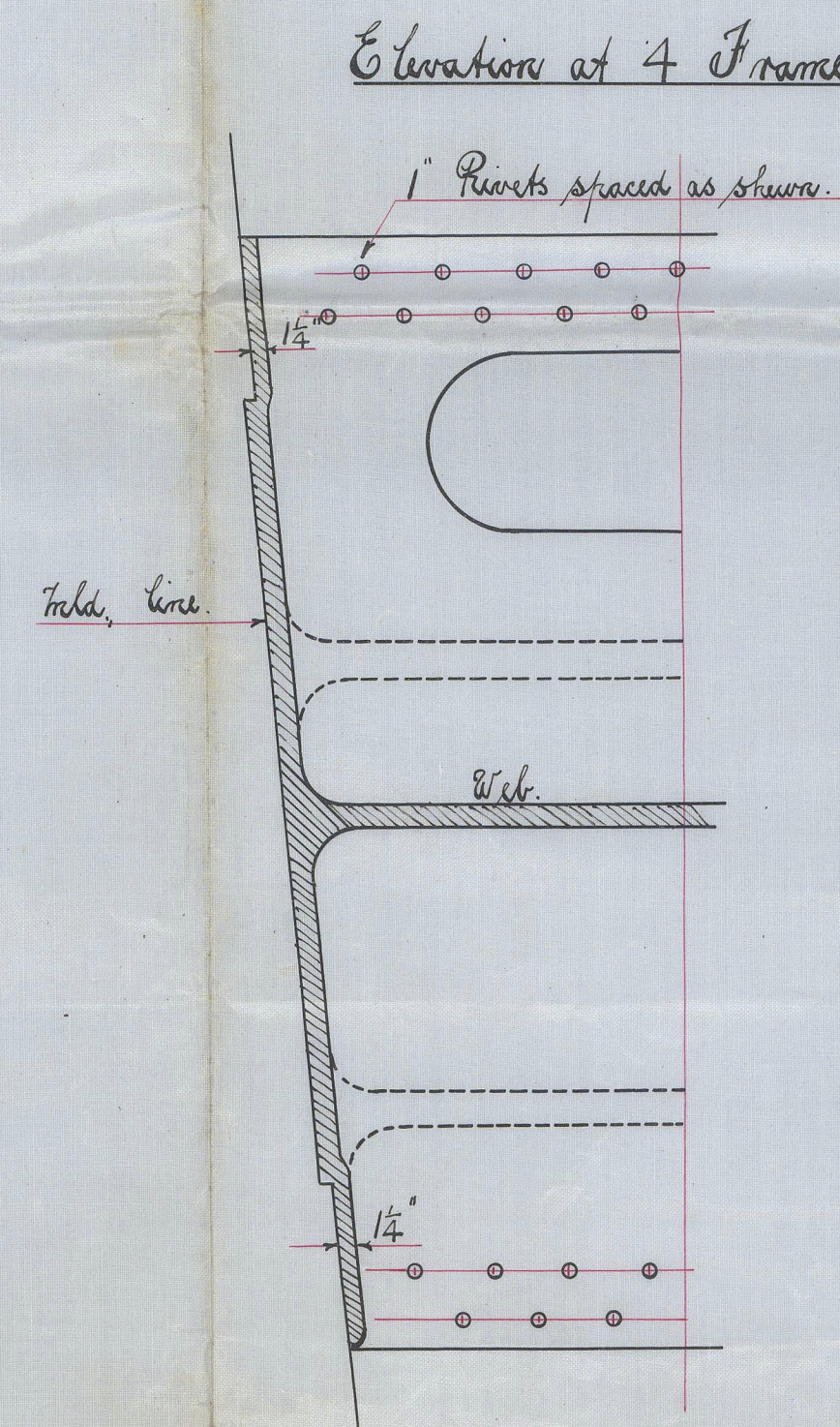
11.4.13.  
16.5.13 (No 334)  
20.9.13

No. 333 & 4  
— Stern & Rudder Frames of Proposed Turbine Steamship —  
Dimensions 450' x 57'6" x 34' Table

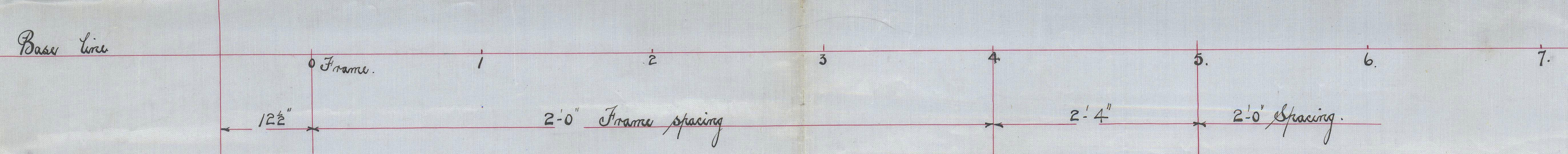
Scale 1 inch = One Foot.  
Diameter of Tail Shaft - 14 1/2"  
Rudder Stock 13 1/2"  
Speed - 14 knots  
Draft - 25'6"  
Stern Frame - Cast Steel  
Rudder - Forged "



Shells begin from 15' below deck to 9 1/2' above bottom arm.  
swelled 10% in diameter in way of all arms  
defused into main piece as shown  
Arms are on alternate sides of plate  
Space between arms 1 1/2' for 1 1/4' plate  
Hull hole 1 1/2' diameter spaced as shown counter-drill  
on other side of arm.



Elevation of Spectacle Frame



C.B.  
10.4.13.





16

No. 333 +4

148

Propeller Bracket. T. Rudder

Illustration of Spade Rudder



015292-015301-0022



© 2021

Lloyd's Register  
Foundation