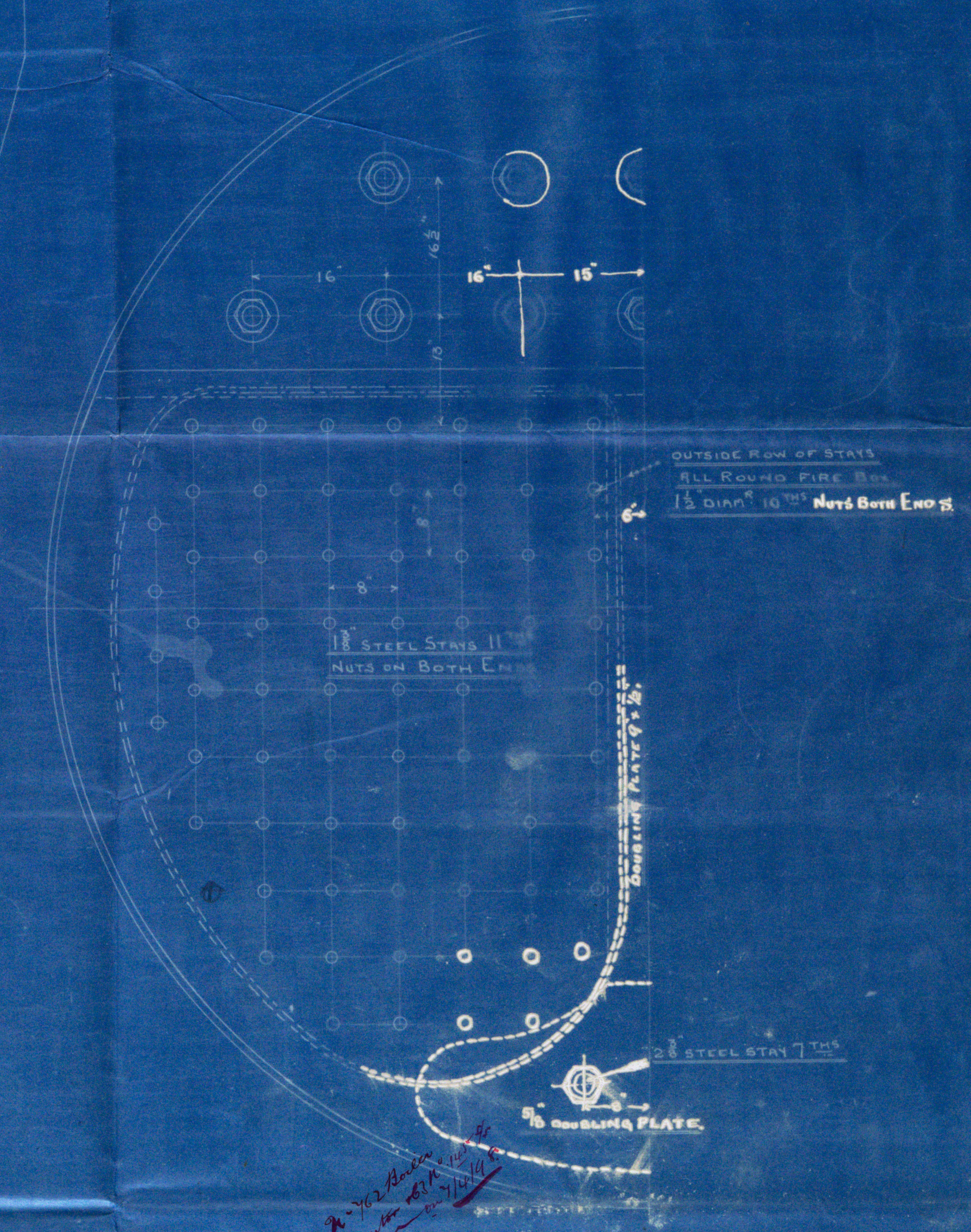
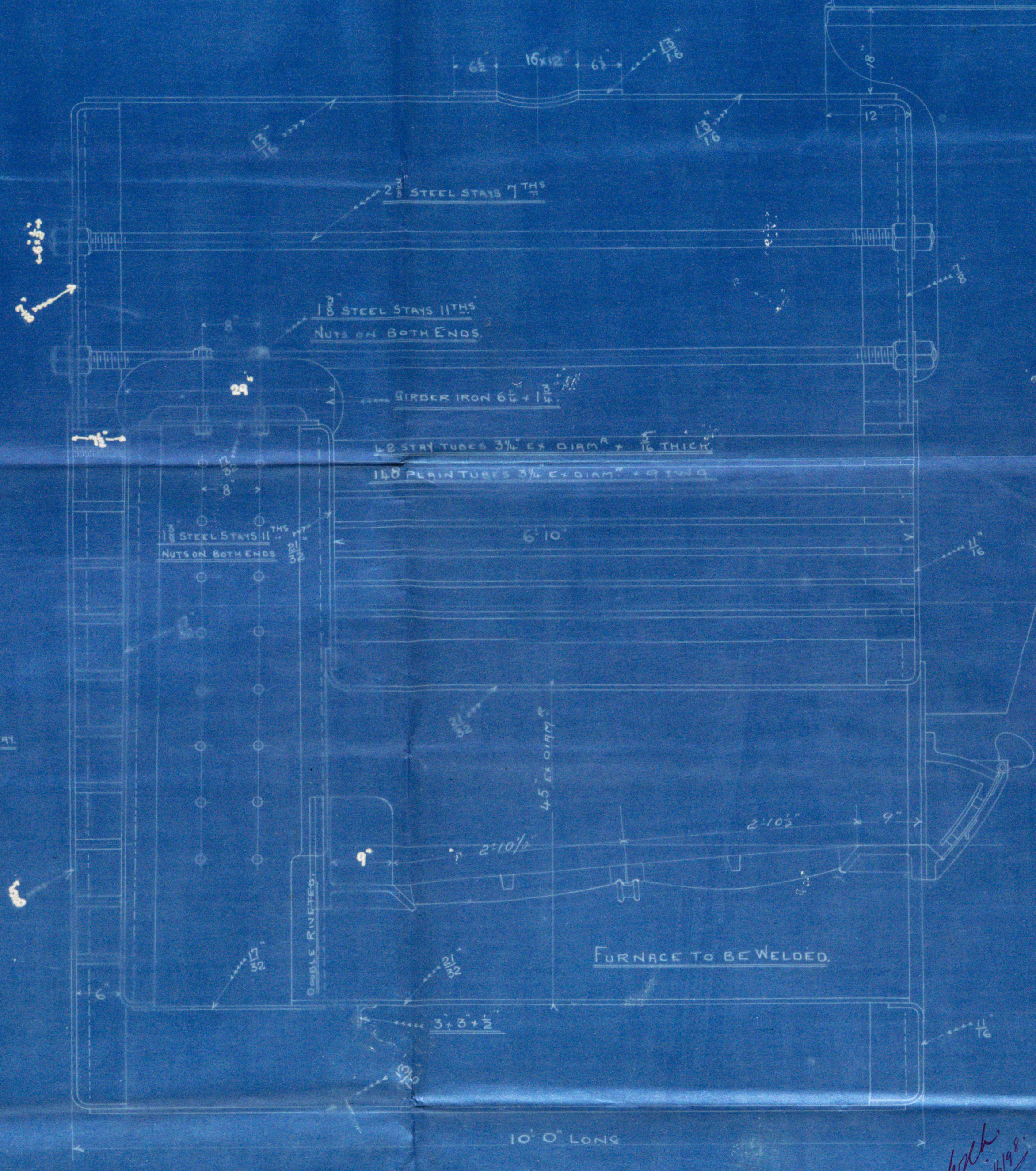
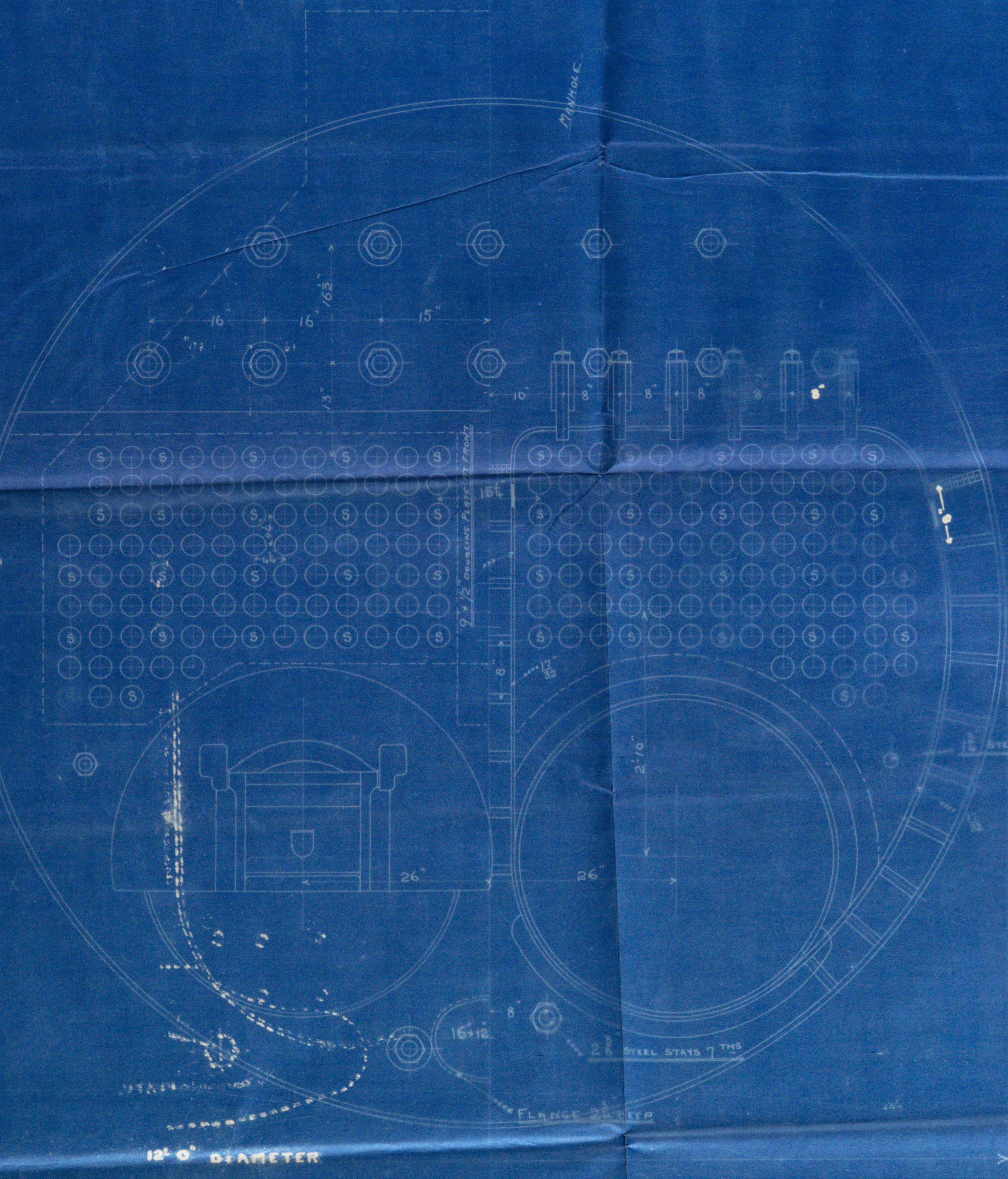


STEEL PLATES BARS AND RIVETS
ALL HOLES DRILLED IN PLACE

LONG SEAMS BUTT JOINTS DOUBLE STRAPS
7/8 HOLES 5 3/4 PITCH BUTT STRAPS 1/8 THICK



BOILER No 769
WORKING PRESSURE 130 LBS
SCALE INCH - ONE FOOT
23/3/98

TO HAVE LLOYD'S CERTIFICATE
GRATE SURFACE - 40 1/2 sq ft
TOTAL HEATING - 1365 sq ft

*Rebuilt in 1902 by J. H. Anderson
Approved by the Inspector 23/3/98*

Main Balli
3

Ross & Duncan

No. 469 Gales
- 467 Dupuis

for

R. Williamson 168 N° 156 S/S

130 lbs¹ working pressure

S/S. 'Fred'

Glo. Rpt ~~to~~ 16860

BRW. 886.



BRW46-0124



© 2021

Lloyd's Register
Foundation